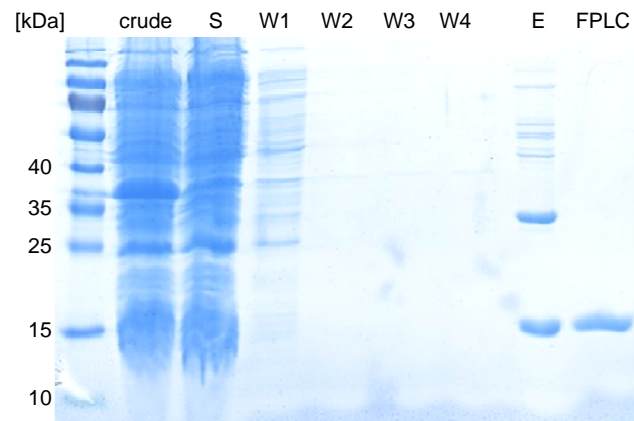


## Figure S2



**Figure S2:** Heterologous expression and purification of Pit2. Pit2 was expressed as a fusion protein C-terminal to GST. After cell lysis, the soluble fraction (S) was loaded on a column containing glutathion-sepharose. After several washing steps (W1-4), Pit2 was separated from GST by PreScission Protease cleavage using a specific PreScission protease cleavage site and hence eluted from the column (E). Further purification was performed by conducting gel filtration. Purity of the protein was afterwards tested by SDS-PAGE (FPLC).