

**S1 File.** The high-resolution maps of location of urban grassland patches in Wrocław city. The green color shows the 20% of grasslands patches with the highest dIIC values for a particular dispersal distance; the gray indicates the remaining 80% of patches. The maps are ordered according to increased assumed dispersal distances thresholds: 2m, 20 m, 44 m, 100 m and 1000 m.

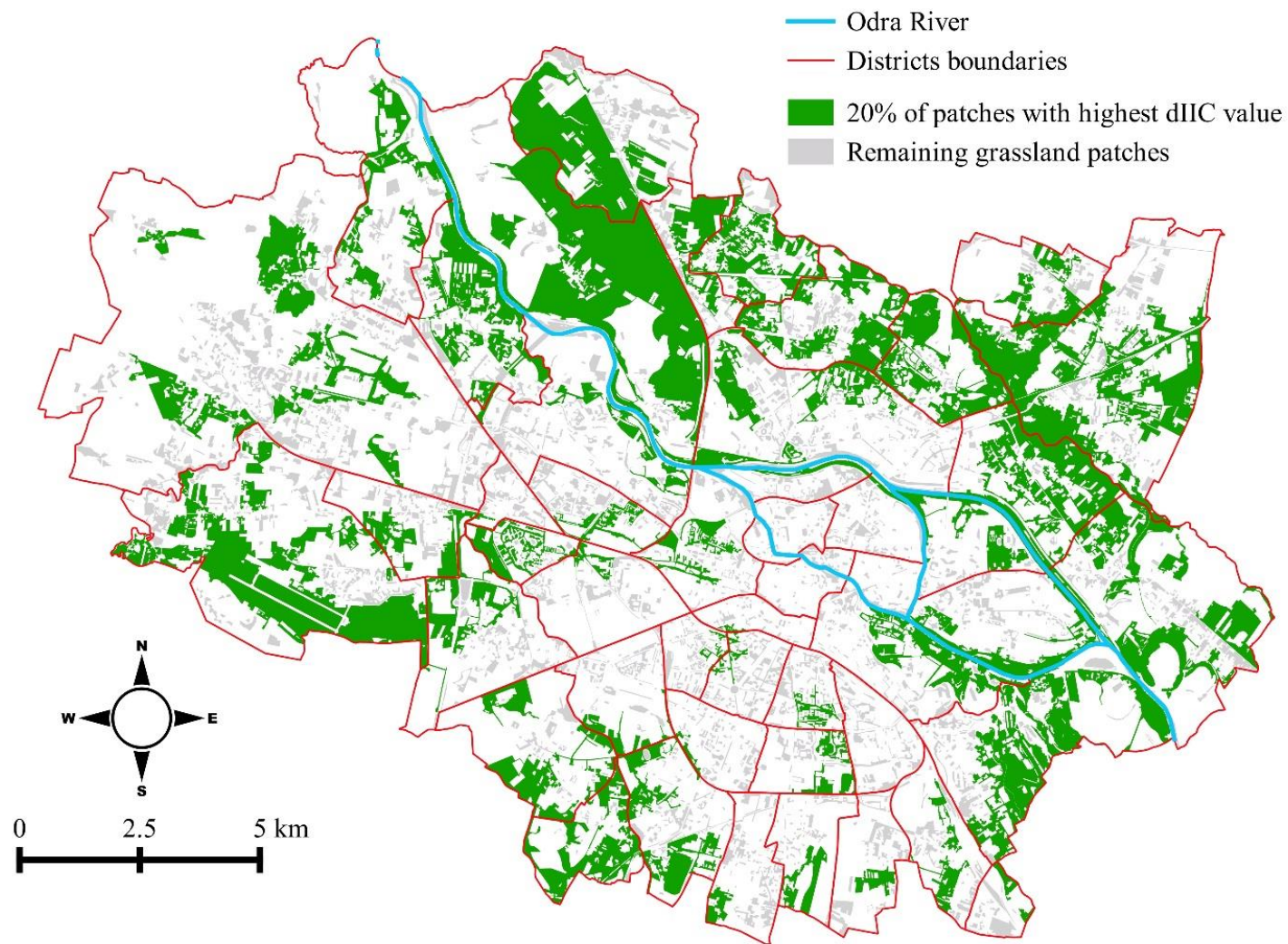
**S1A Map.** Location of urban grassland patches in Wrocław city. The green color shows the 20% of grasslands patches with the highest dIIC values for a dispersal distance of 2 m; the gray indicates the remaining 80% of patches. The shapefiles are provided by [66,69].

**S1B Map.** Location of urban grassland patches in Wrocław city. The green color shows the 20% of grasslands patches with the highest dIIC values for a dispersal distance of 20 m; the gray indicates the remaining 80% of patches. The shapefiles are provided by [66,69].

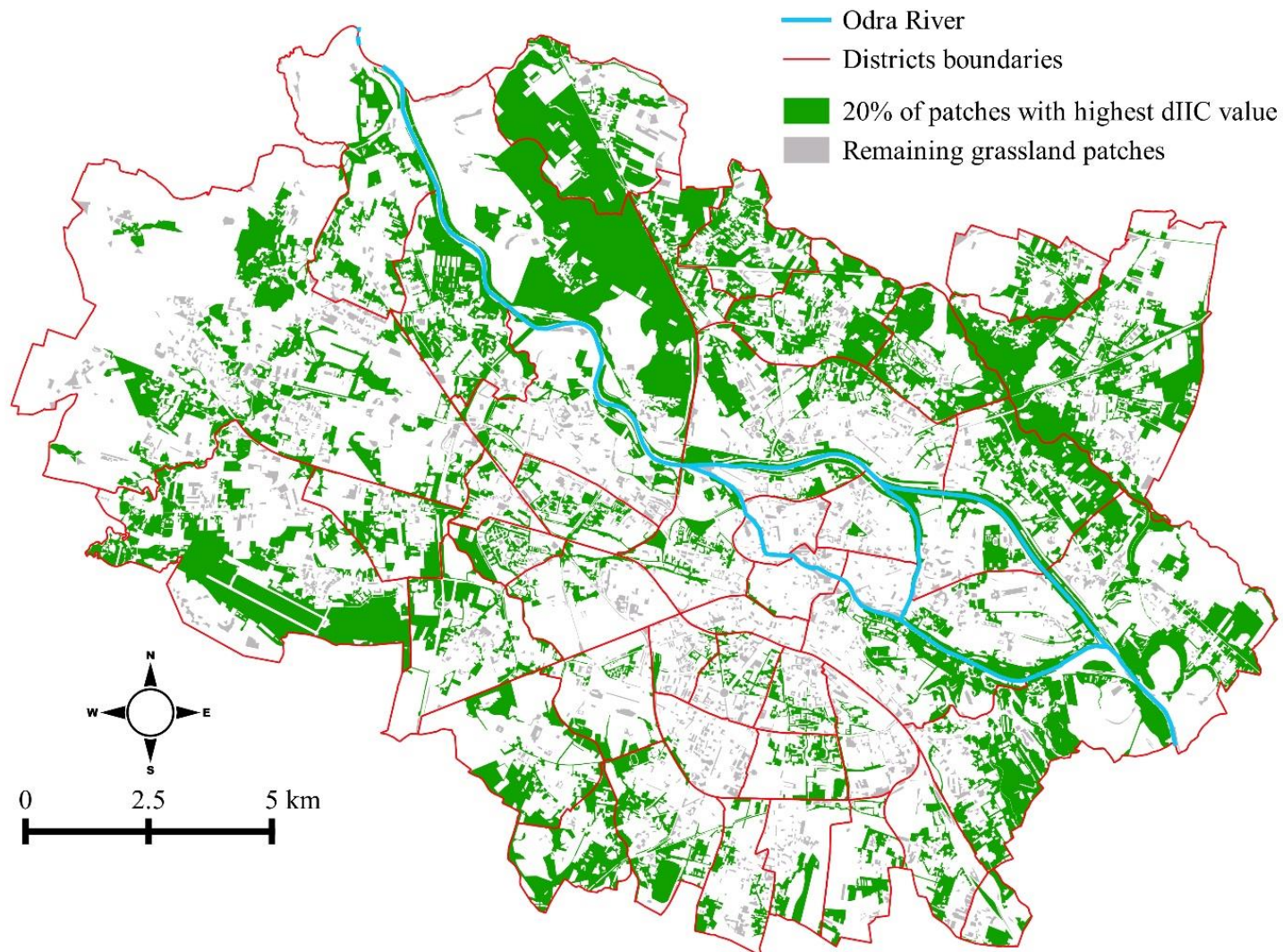
**S1C Map.** Location of urban grassland patches in Wrocław city. The green color shows the 20% of grasslands patches with the highest dIIC values for a dispersal distance of 44 m; the gray indicates the remaining 80% of patches. The shapefiles are provided by [66,69].

**S1D Map.** Location of urban grassland patches in Wrocław city. The green color shows the 20% of grasslands patches with the highest dIIC values for a dispersal distance of 100 m; the gray indicates the remaining 80% of patches. The shapefiles are provided by [66,69].

**S1E Map.** Location of urban grassland patches in Wrocław city. The green color shows the 20% of grasslands patches with the highest dIIC values for a dispersal distance of 1000 m; the gray indicates the remaining 80% of patches. The shapefiles are provided by [66,69].

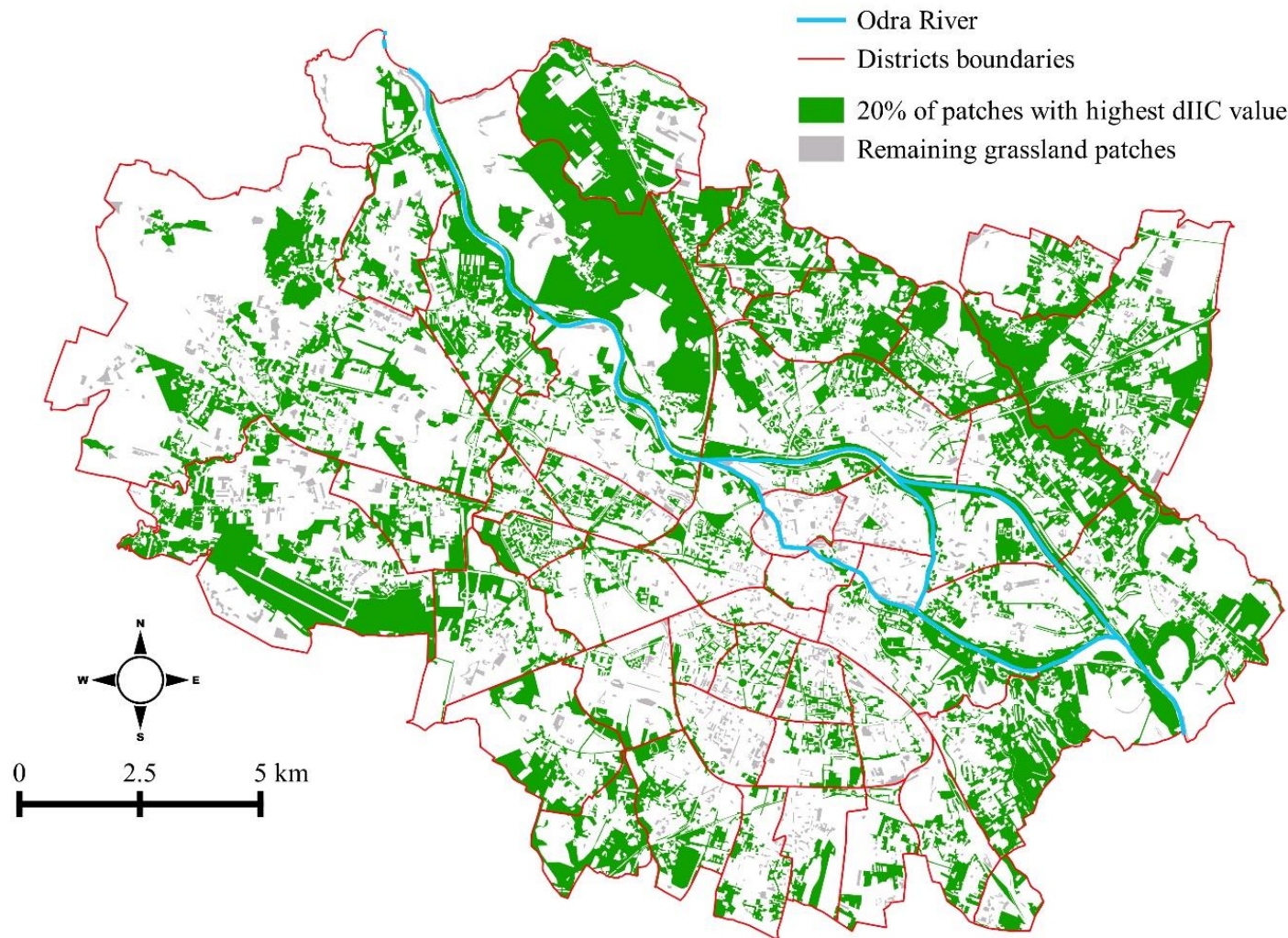


**S1A Map.** Location of urban grassland patches in Wrocław city. The green color shows the 20% of grasslands patches with the highest dIIC values for a dispersal distance of **2 m**; the gray indicates the remaining 80% of patches. The shapefiles are provided by [66,69].

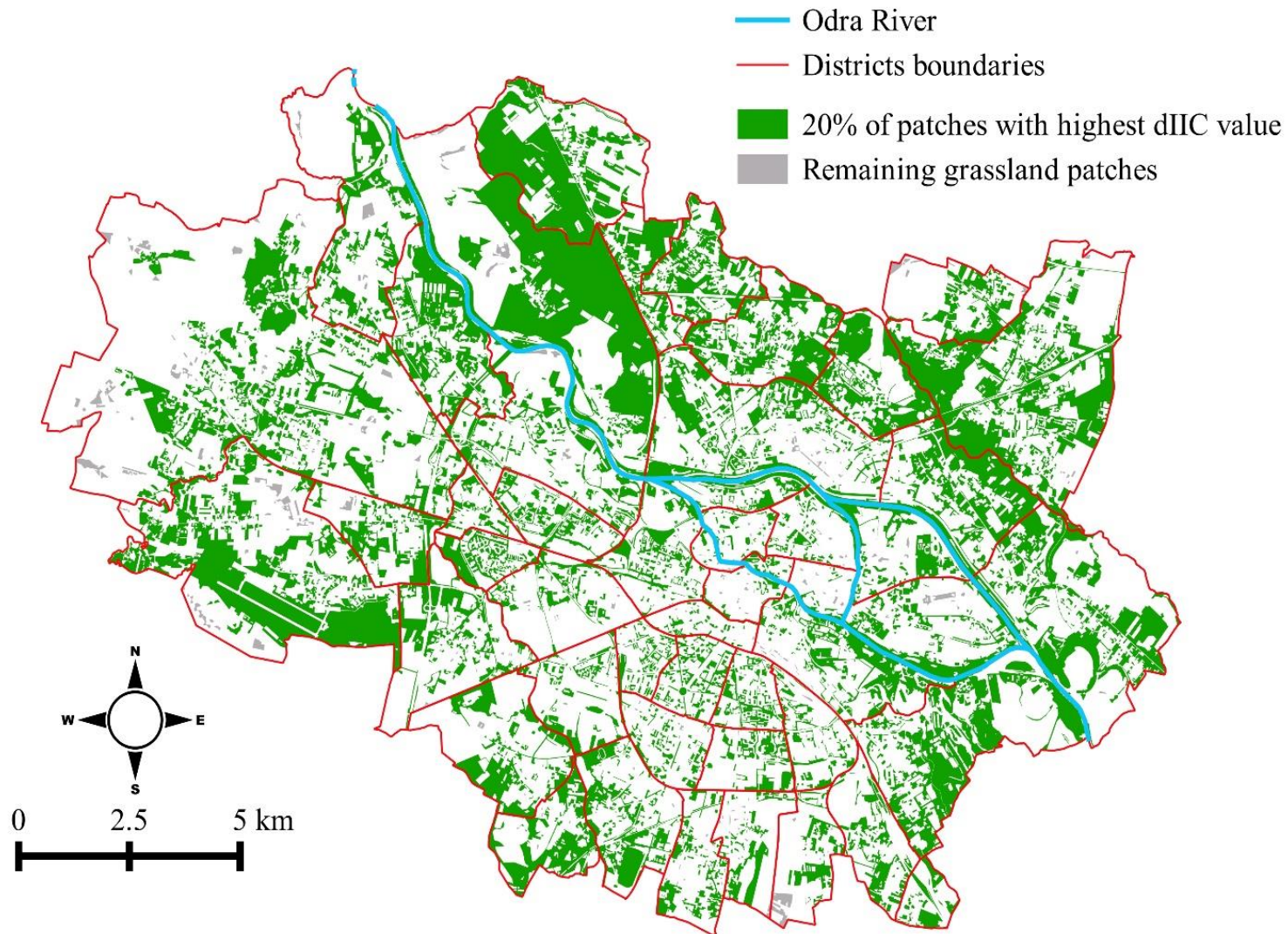


**S1B Map.** Location of urban grassland patches in Wrocław city. The green color shows the 20% of grasslands patches with the highest dIIC values for a dispersal distance of **20 m**; the gray indicates the remaining 80% of patches. The shapefiles are provided by [66,69].



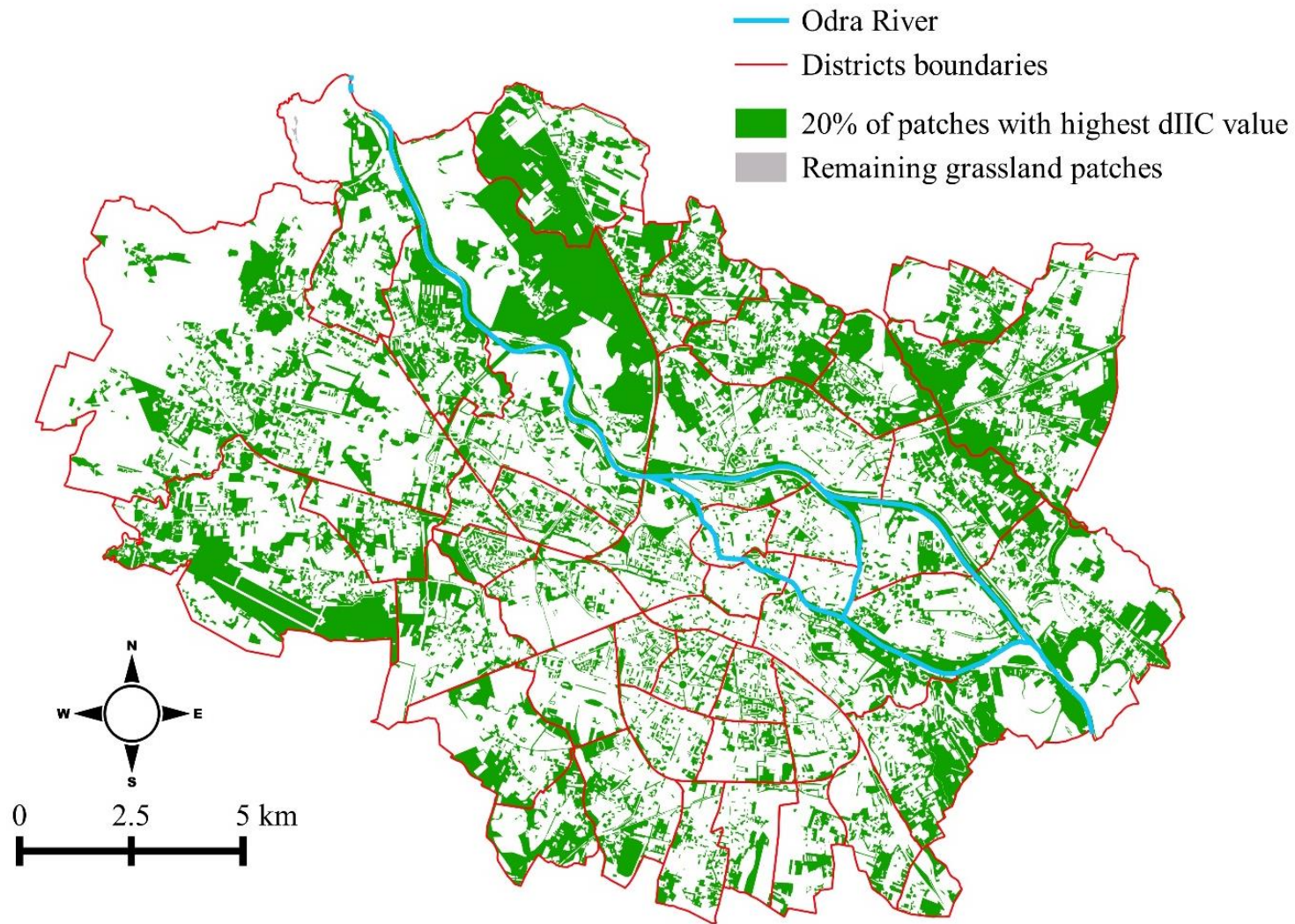


**S1C Map.** Location of urban grassland patches in Wrocław city. The green color shows the 20% of grasslands patches with the highest dIIC values for a dispersal distance of **44 m**; the gray indicates the remaining 80% of patches. The shapefiles are provided by [66,69].



**S1D Map.** Location of urban grassland patches in Wrocław city. The green color shows the 20% of grasslands patches with the highest dIIC values for a dispersal distance of **100 m**; the gray indicates the remaining 80% of patches. The shapefiles are provided by [66,69].





**S1E Map.** Location of urban grassland patches in Wrocław city. The green color shows the 20% of grasslands patches with the highest dIIC values for a dispersal distance of **1000 m**; the gray indicates the remaining 80% of patches. The shapefiles are provided by [66,69].