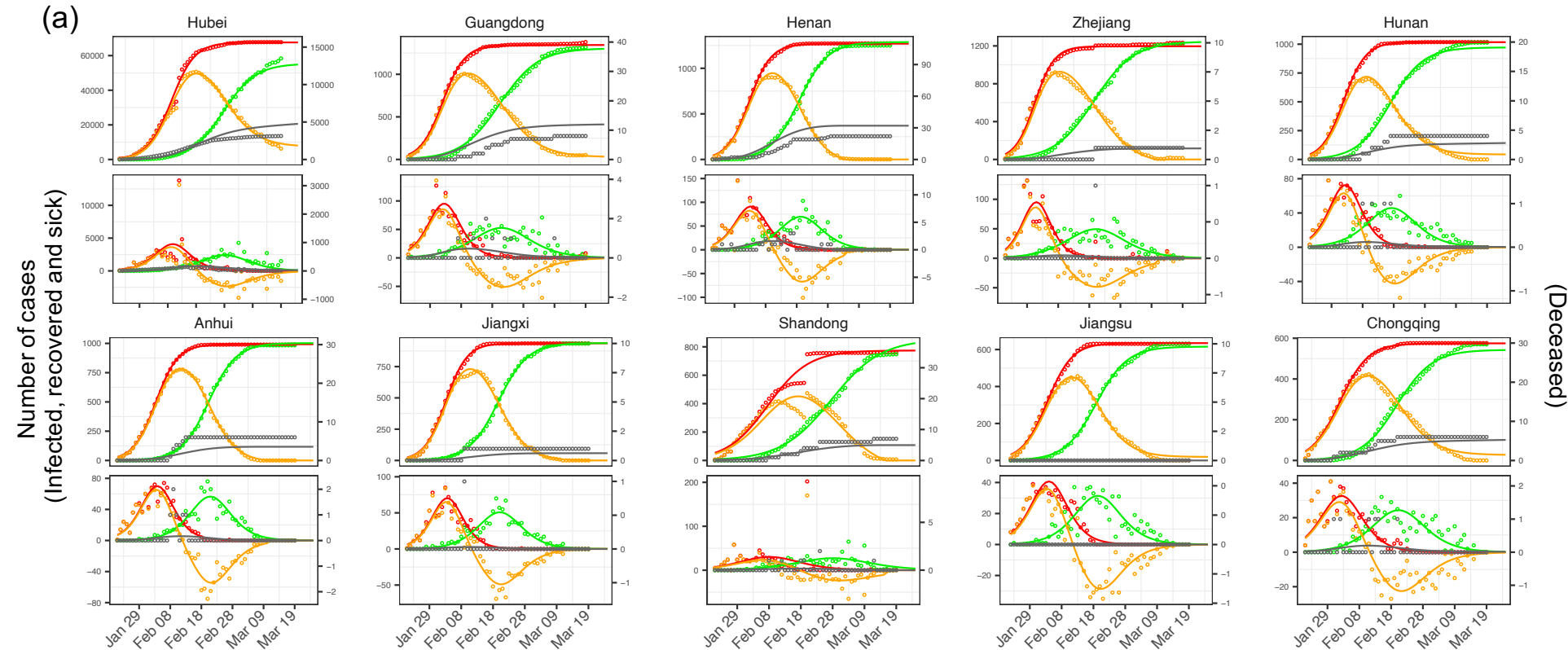
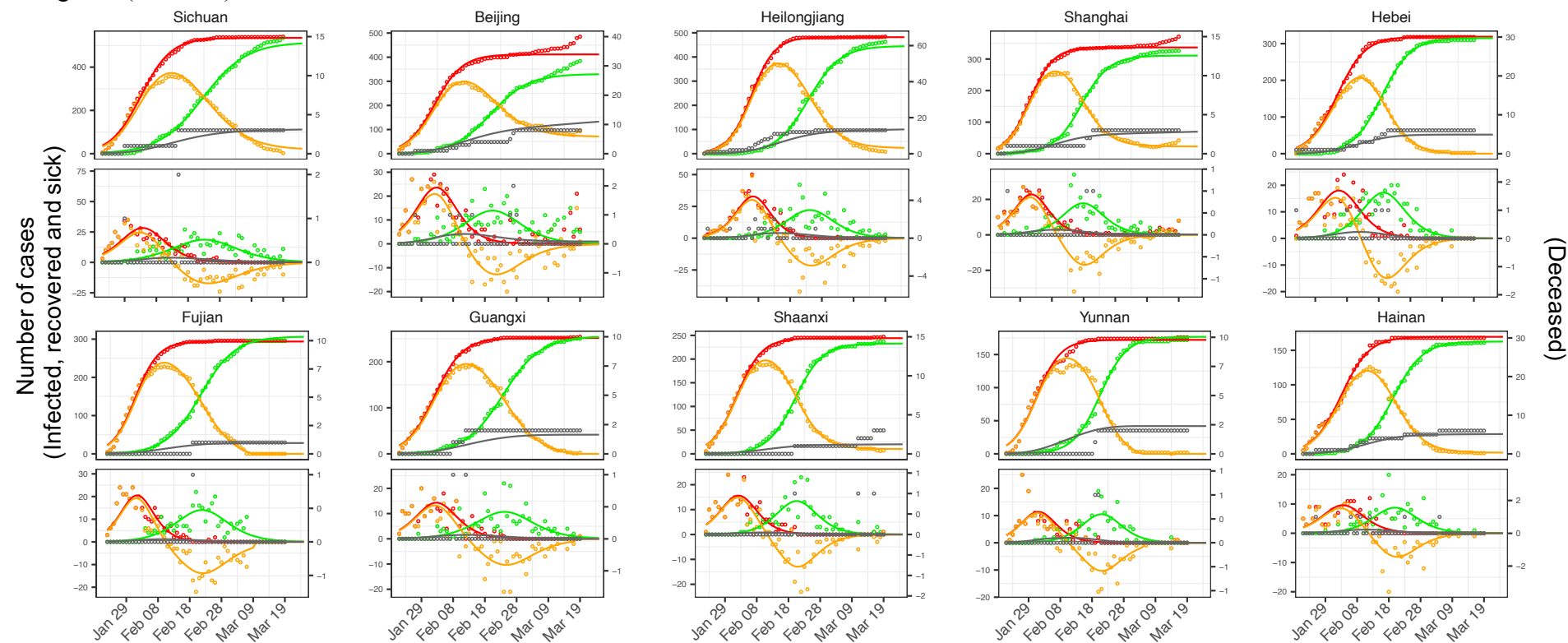


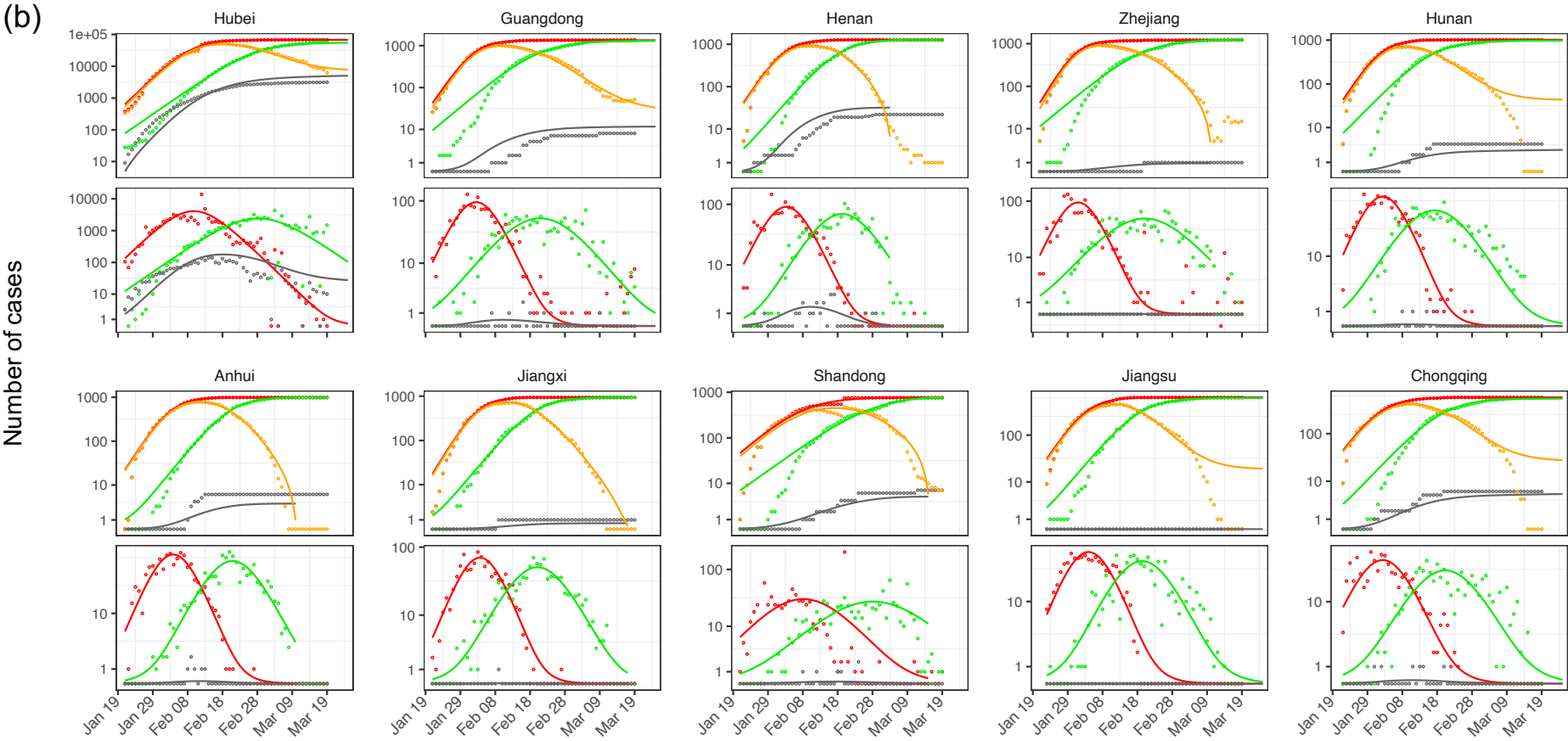
S3 Fig. 3-a



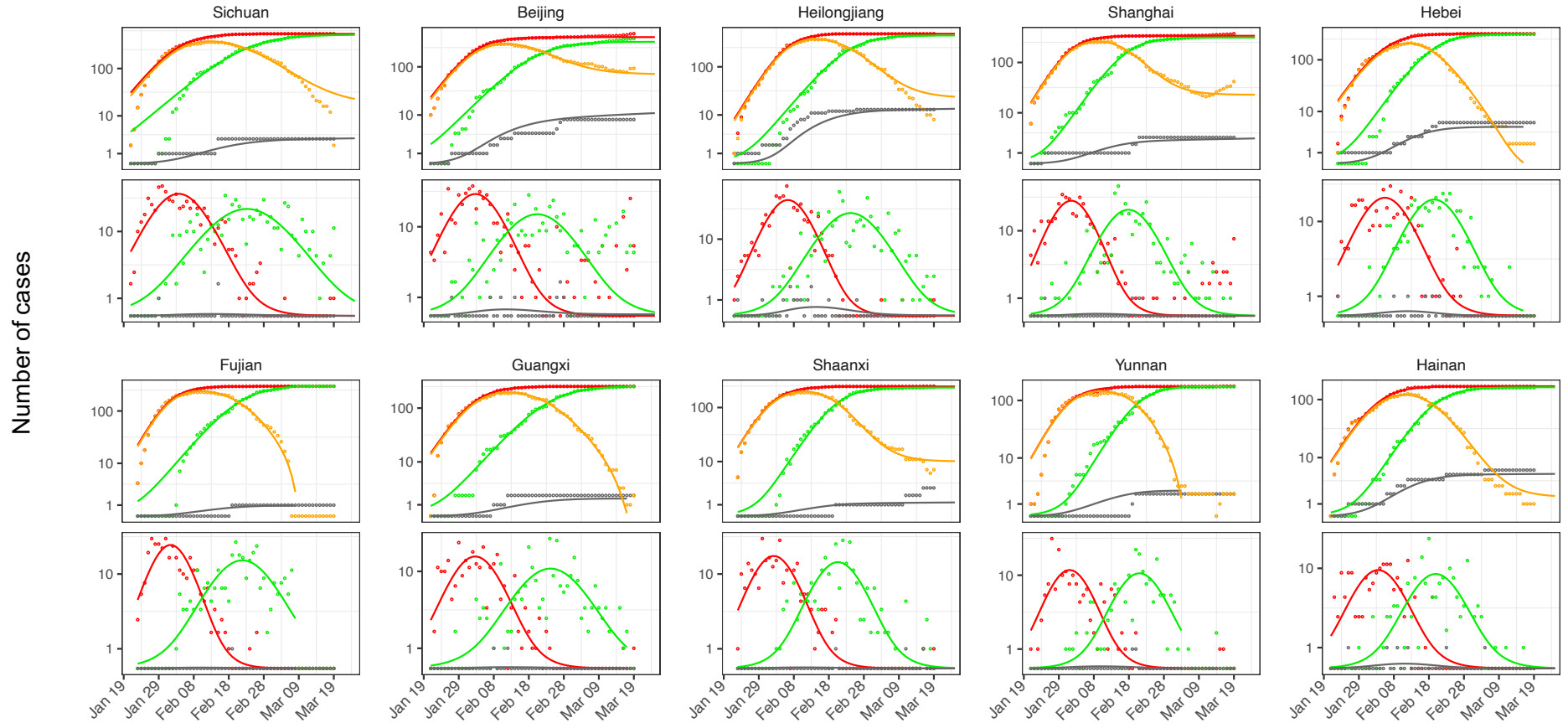
S3 Fig. 3-a (continue)



S3 Fig. 3-b



S3 Fig. 3-b (continue)



S3 Fig. 3 Epidemics of SARS-CoV2 in 20 Chinese provinces with a minimum of 150 cases for normal- (a) and log-scale (b) y-axis. Dots are observed cases and lines are model fits. Red, green and grey colors indicate confirmed, recovered and deceased cases. For the normal scale (a), the left y-axis is for infected, recovered and sick cases and the right y-axis for deceased cases. Orange color indicates the number of “active” sick cases (relative to total infected, top panel), i.e. infected and not yet recovered or deceased, and the daily changes (bottom panel), with negative values (in normal scale) in the lower panel indicating that the number of active cases is decreasing. The upper panel for each province refers to the total number of cases while the lower panel refers to the daily change in the number of cases.