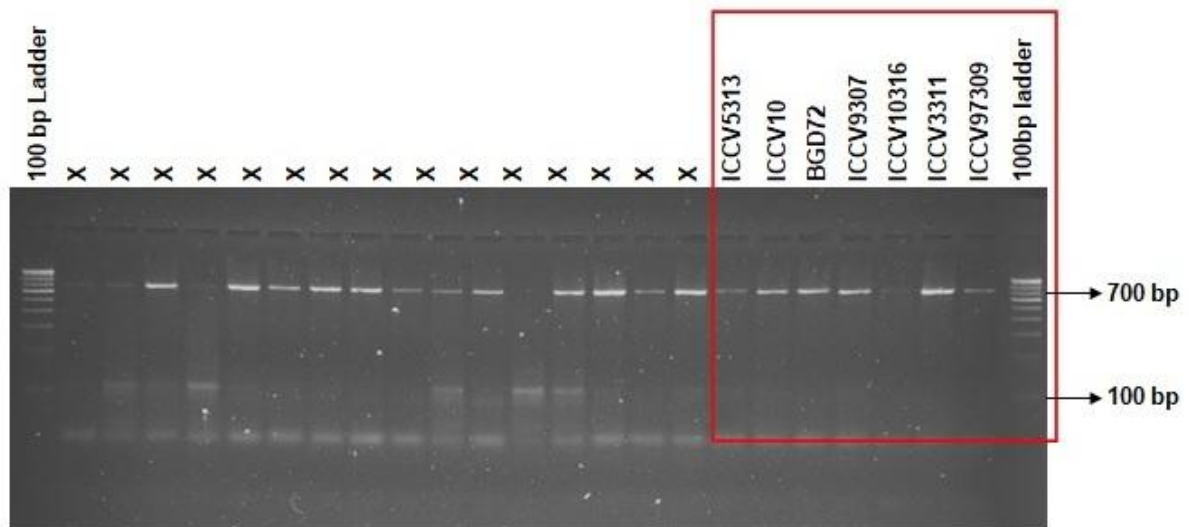


## S2 file



**S3 Raw image. PCR Amplification of seven chickpea genotypes using ASR gene specific marker.** PCR amplification of seven chickpea genotypes *viz.*, ICCV97309, ICCV3311, ICCV10316, ICCV9307, BGD72, ICCV10, and ICCV5313 was done using ASR gene specific primer and revealed a single amplicon ranging from 680-700bp; Marker-100 bp Bangalore Genei DNA ladder.