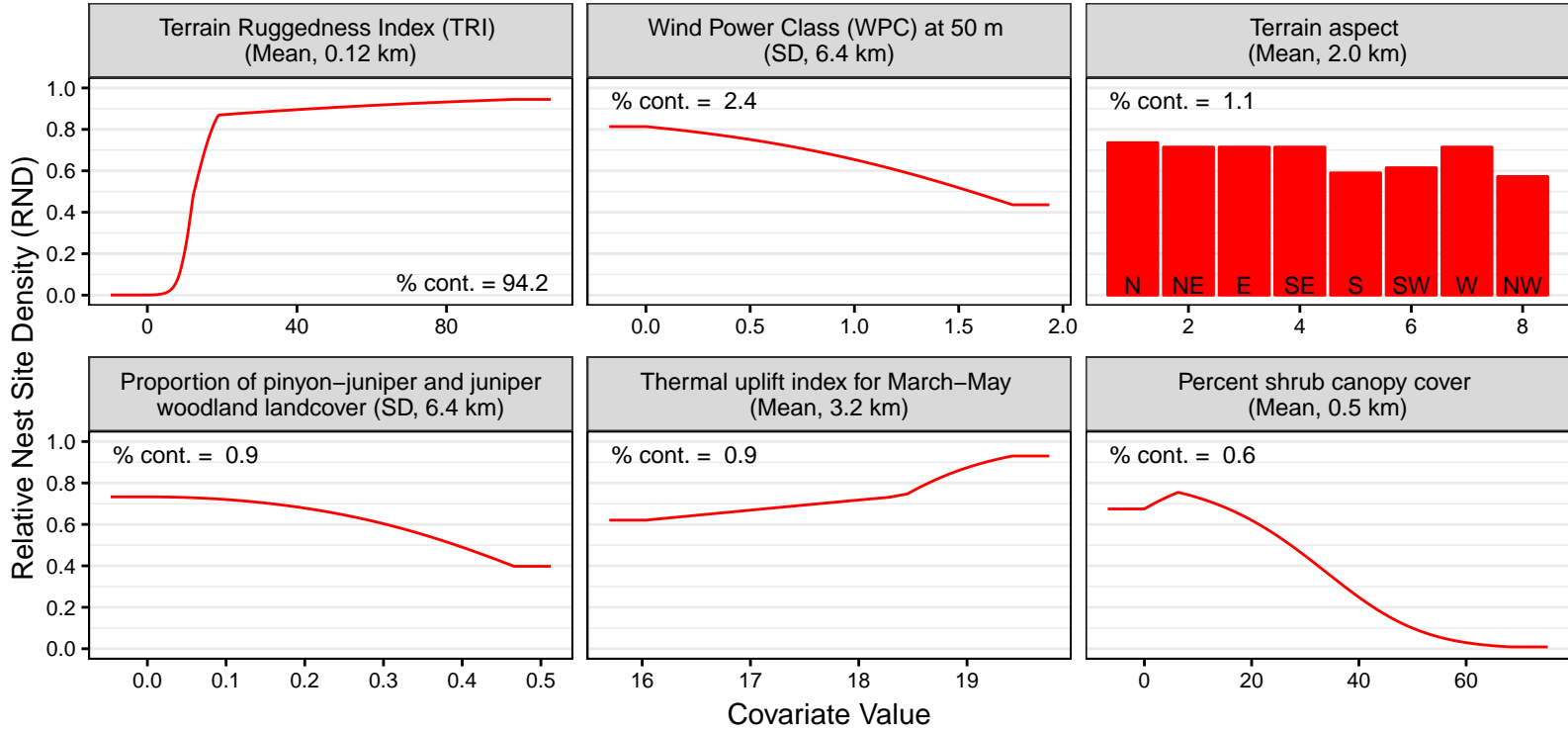


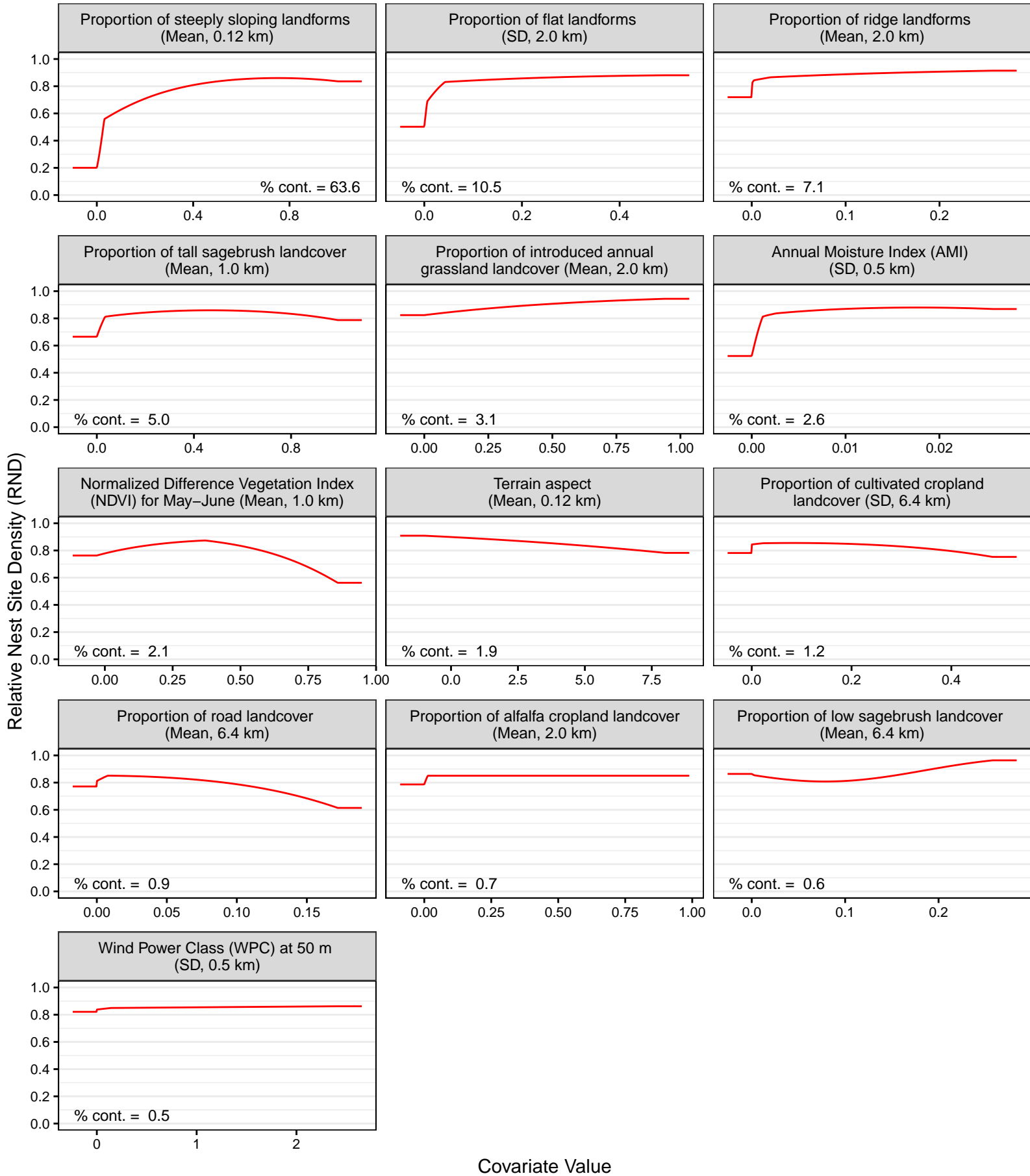
S3 Fig. Functional forms and percent contribution of model covariates for twelve modeling regions of the western United States.

(C) Chihuahuan Desert



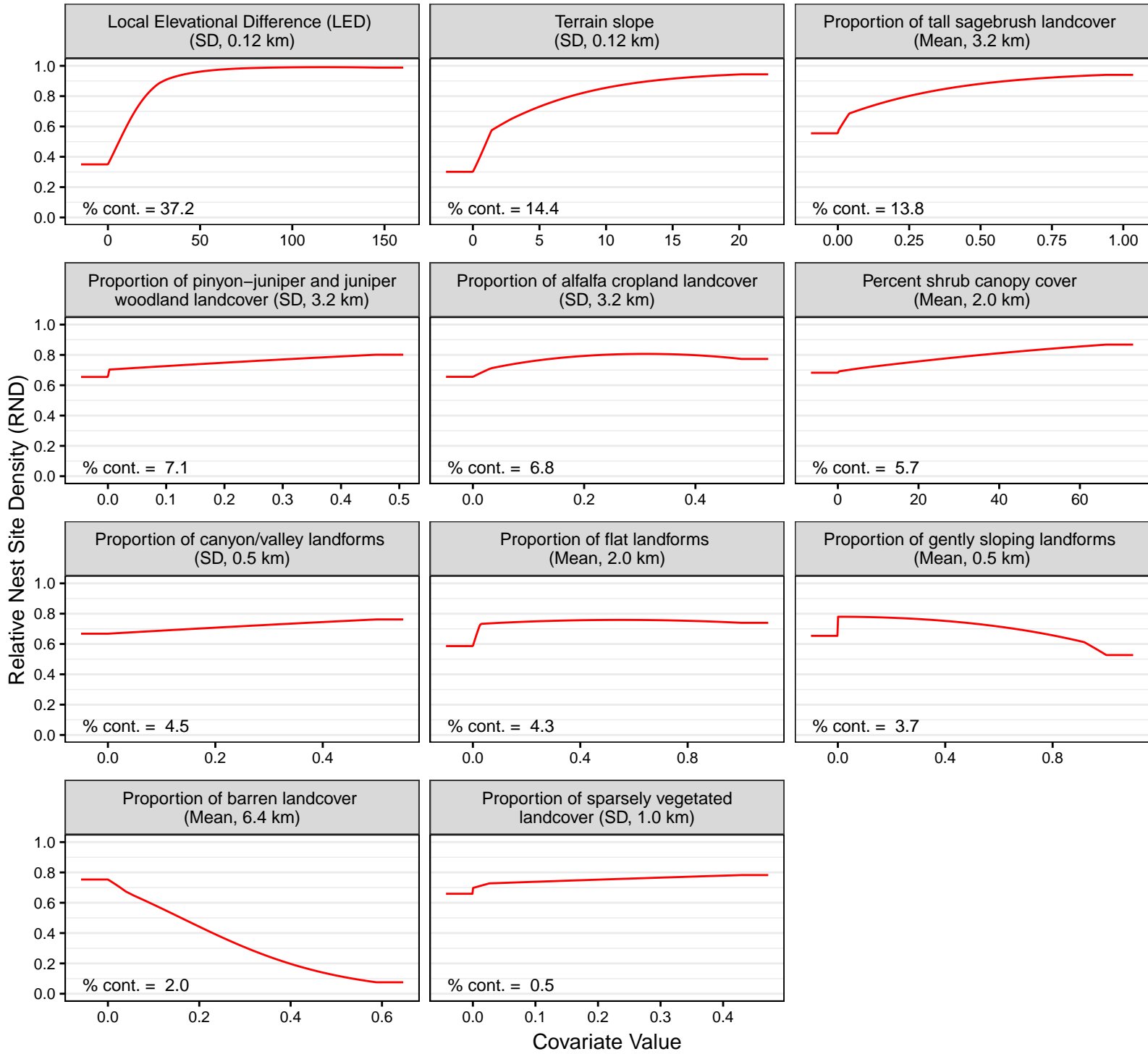
S3 Fig. Functional forms and percent contribution of model covariates for twelve modeling regions of the western United States.

(D) Columbia Plateau



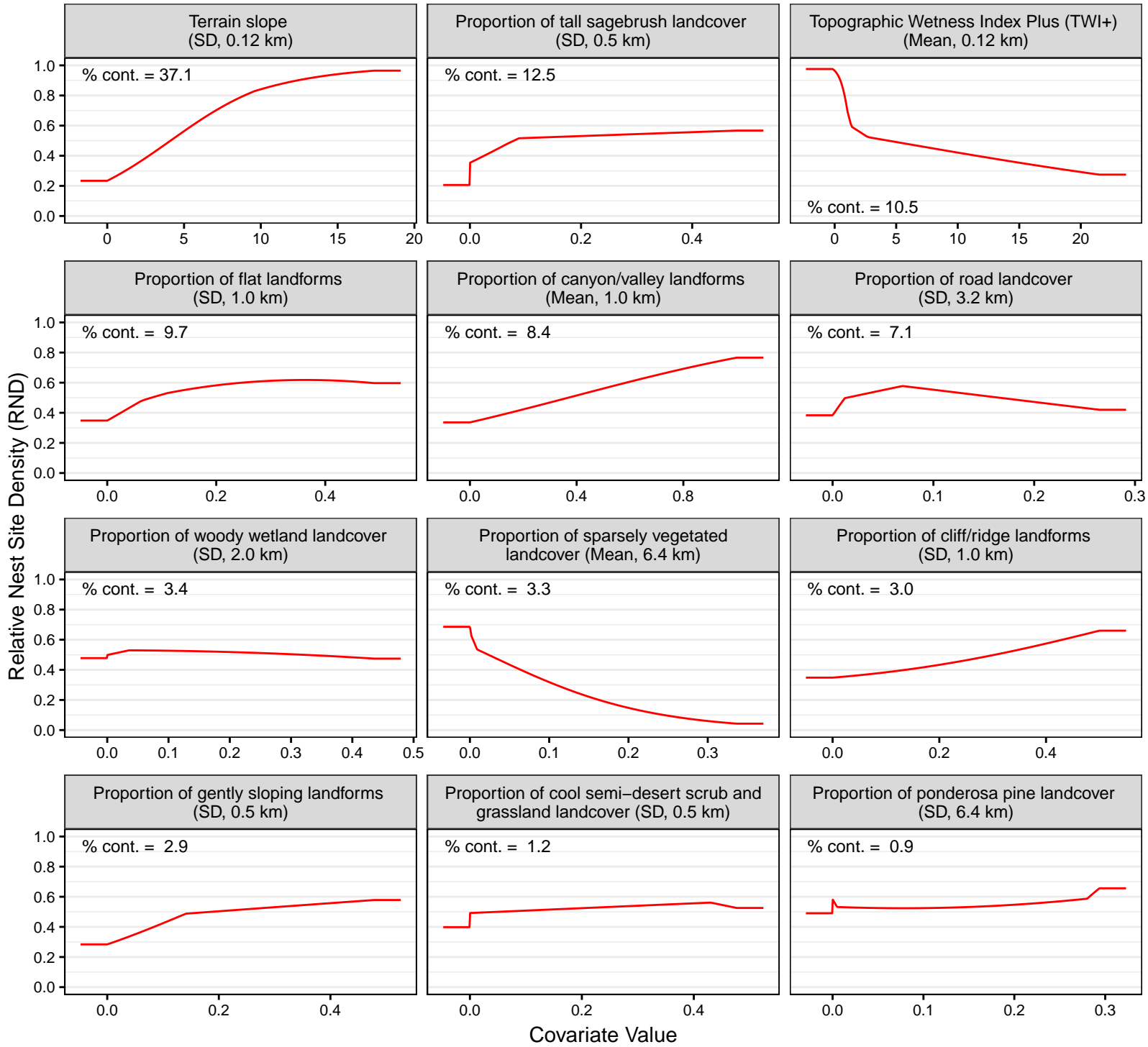
S3 Fig. Functional forms and percent contribution of model covariates for twelve modeling regions of the western United States.

(E) Forested Montane



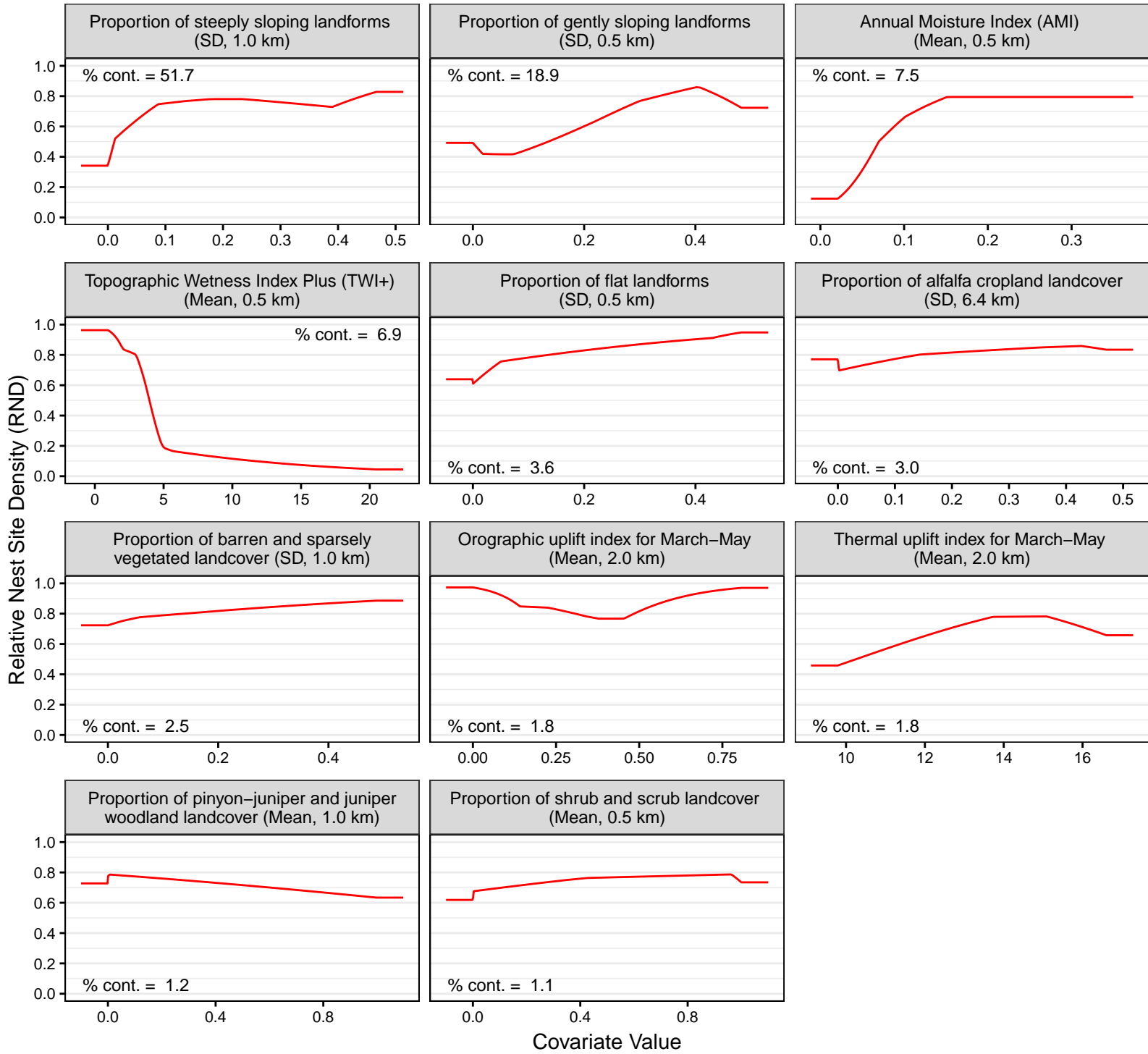
S3 Fig. Functional forms and percent contribution of model covariates for twelve modeling regions of the western United States.

(F) Intermontane Basins and Valleys



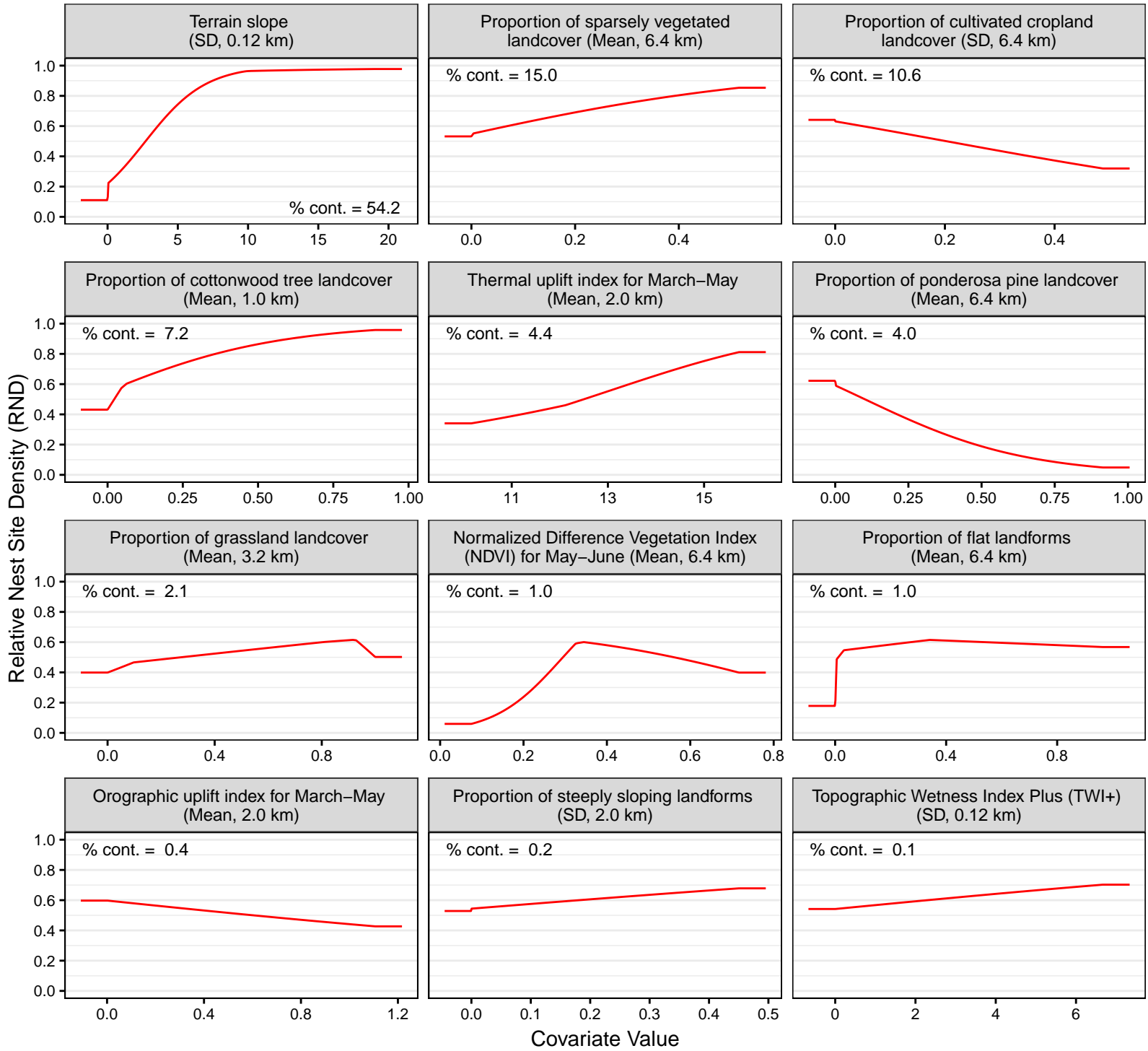
S3 Fig. Functional forms and percent contribution of model covariates for twelve modeling regions of the western United States.

(G) Northern Great Basin



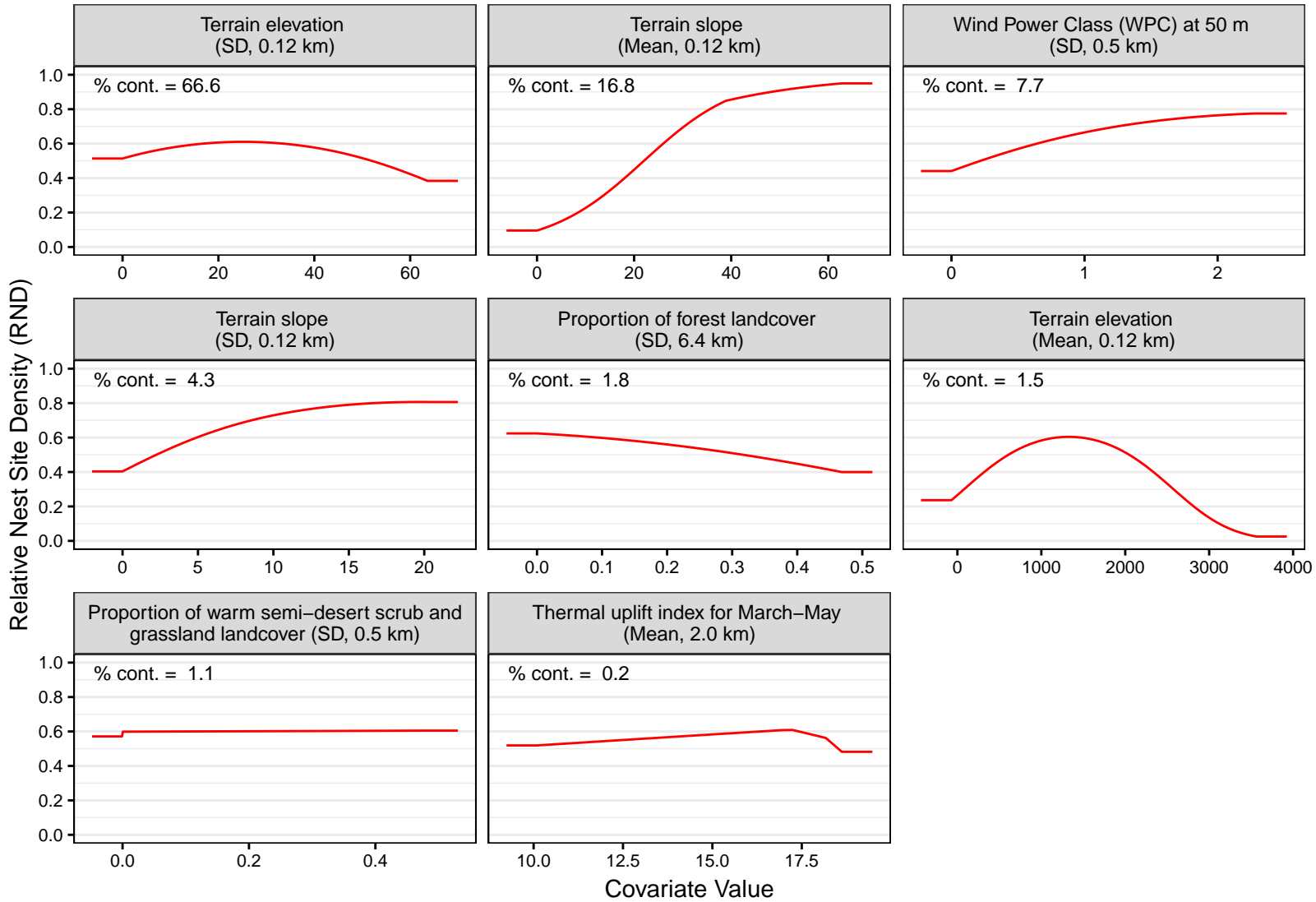
S3 Fig. Functional forms and percent contribution of model covariates for twelve modeling regions of the western United States.

(H) Northwestern Plains



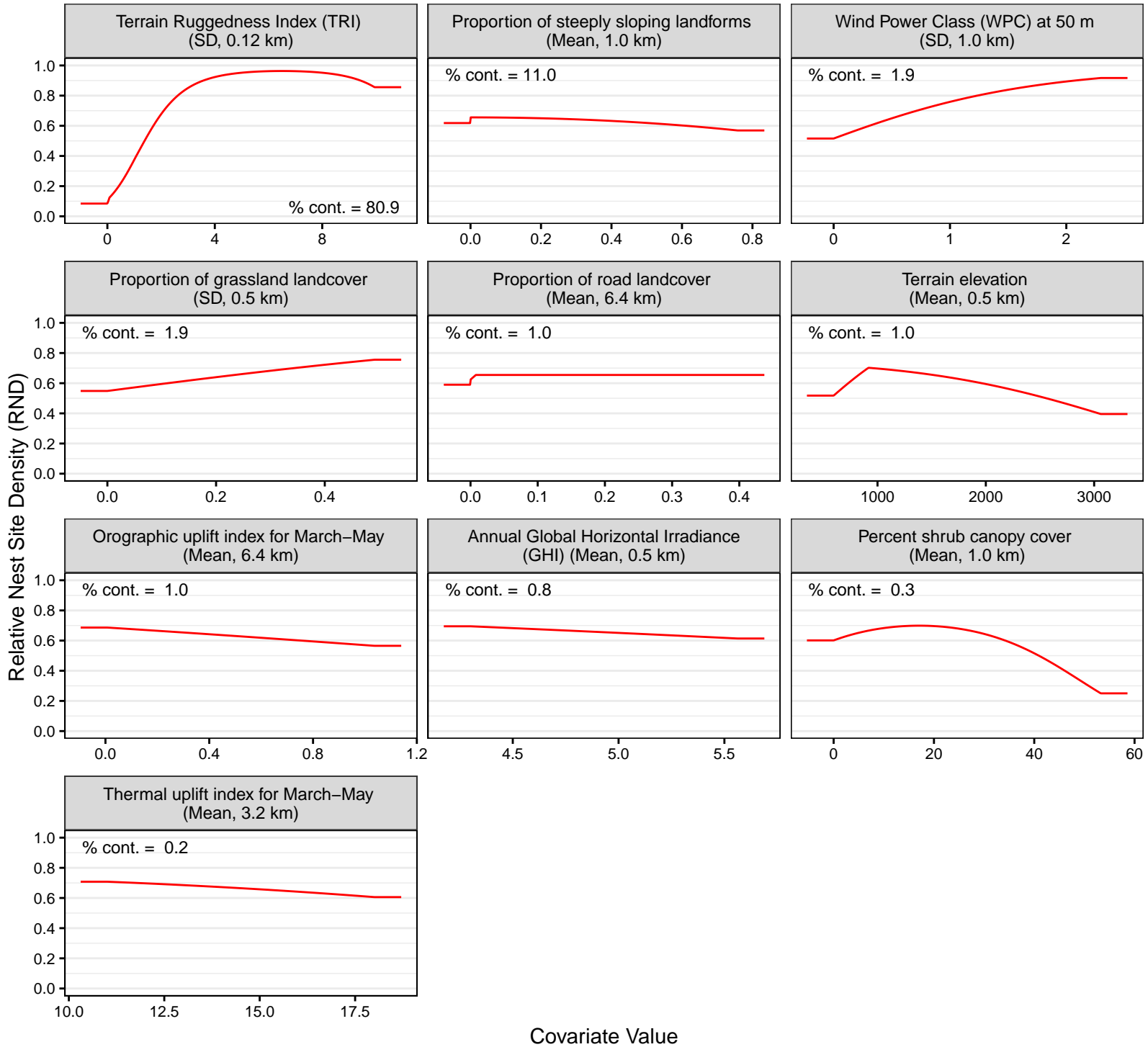
S3 Fig. Functional forms and percent contribution of model covariates for twelve modeling regions of the western United States.

(I) Southwestern Deserts



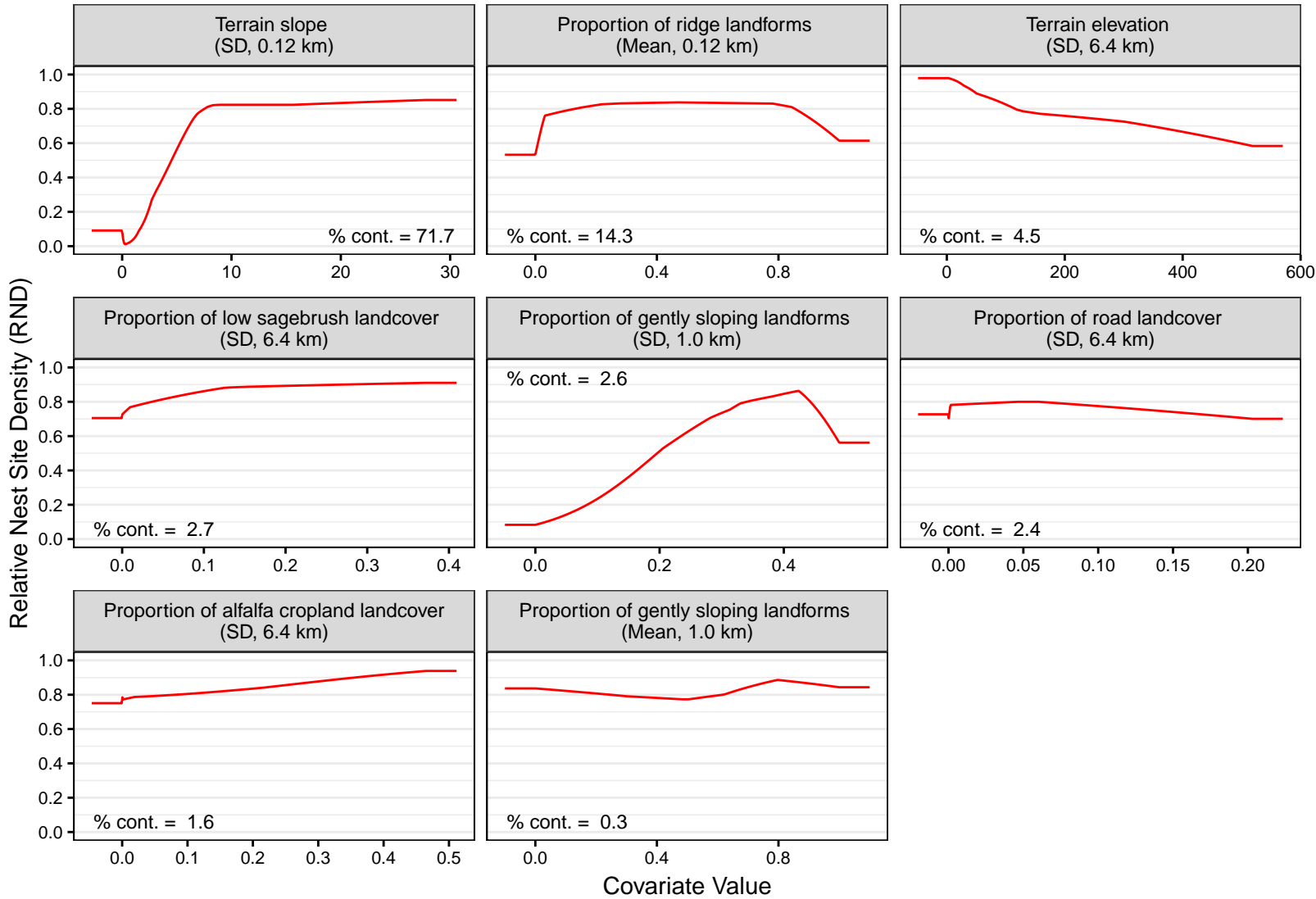
S3 Fig. Functional forms and percent contribution of model covariates for twelve modeling regions of the western United States.

(J) Southwestern Plains



S3 Fig. Functional forms and percent contribution of model covariates for twelve modeling regions of the western United States.

(K) Southwestern Plateaus



S3 Fig. Functional forms and percent contribution of model covariates for twelve modeling regions of the western United States.

(L) Wyoming Basin

