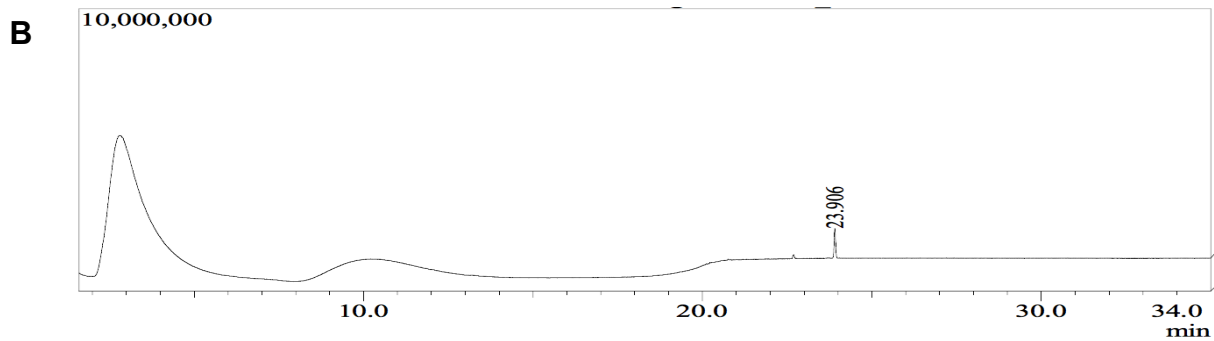
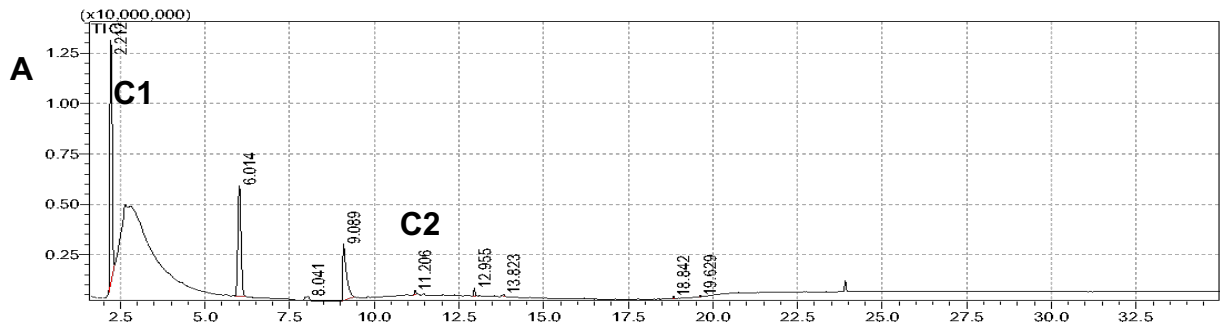


S4 Fig.

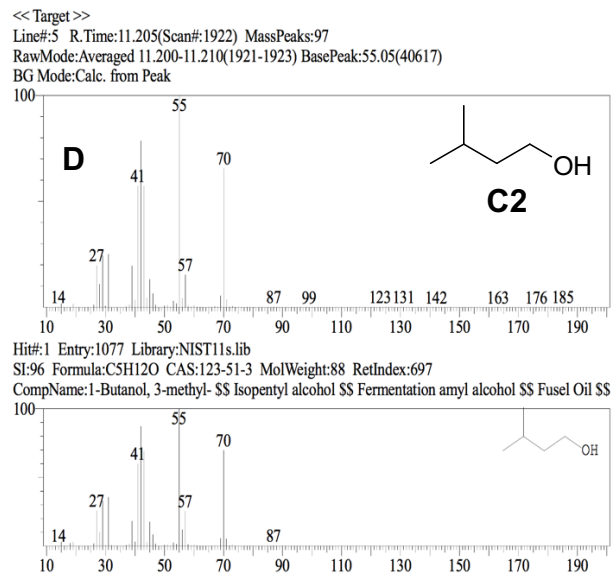
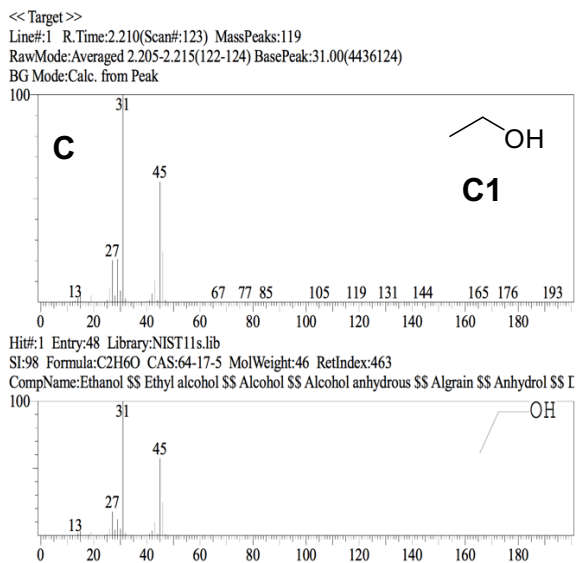
A. Headspace analysis of *S. depilis* brood cells VOCs, showing ethanol (C1) is the highest signal (2.2 min). Isoamyl alcohol (C2) is also detected (11.2 min). Presence of ethyl acetate (6.0 min) and acetic acid (9.0 min).

B. Headspace analysis of the vial as control.



C. Characterization of ethanol (C1), present in *S. depilis* brood cells, using NIST library.

D. Characterization of isoamyl alcohol (C2), present in *S. depilis* brood cells, using NIST library.



The six most abundant compounds identified:

| Peak Report TIC | | | | |
|-----------------|--------|----------|-------|---|
| Peak# | R.Time | Area | Area% | Name |
| 1 | 2.212 | 57731868 | 49.44 | Ethanol |
| 2 | 6.014 | 35270049 | 30.21 | Ethyl Acetate |
| 3 | 8.041 | 1740630 | 1.49 | Butanal, 3-methyl- (CAS) 3-Methylbutar |
| 4 | 9.089 | 19911097 | 17.05 | Acetic acid |
| 5 | 11.206 | 613918 | 0.53 | 1-Butanol, 3-methyl- |
| 6 | 12.955 | 999479 | 0.86 | Propanoic acid, 2-hydroxy-, ethyl ester |