

S2 Figure. Manhattan plots.

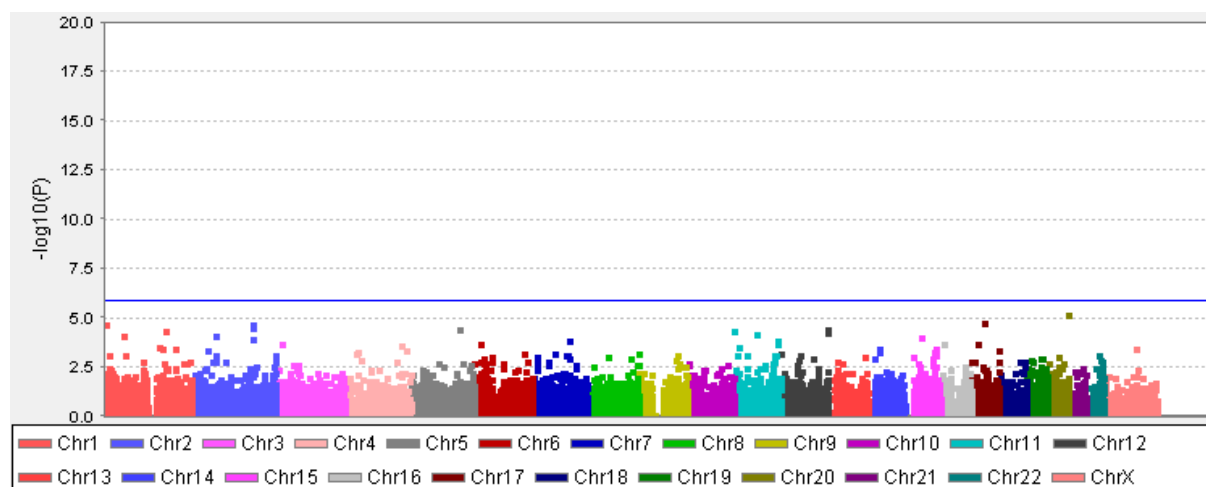


Figure A. Manhattan plot of the Fisher's exact test association p-values for the single variant analyses with $MAF \geq 1.0\%$. Chromosomes are shown on the x-axis. On the y-axis, the $-\log_{10}$ of the p -value is shown. The blue line represents the threshold for significance after Bonferroni correction for 36,032 variants (1.39×10^{-6} , which corresponds to a value of 5.86). Variants above this line are considered statistically significant.

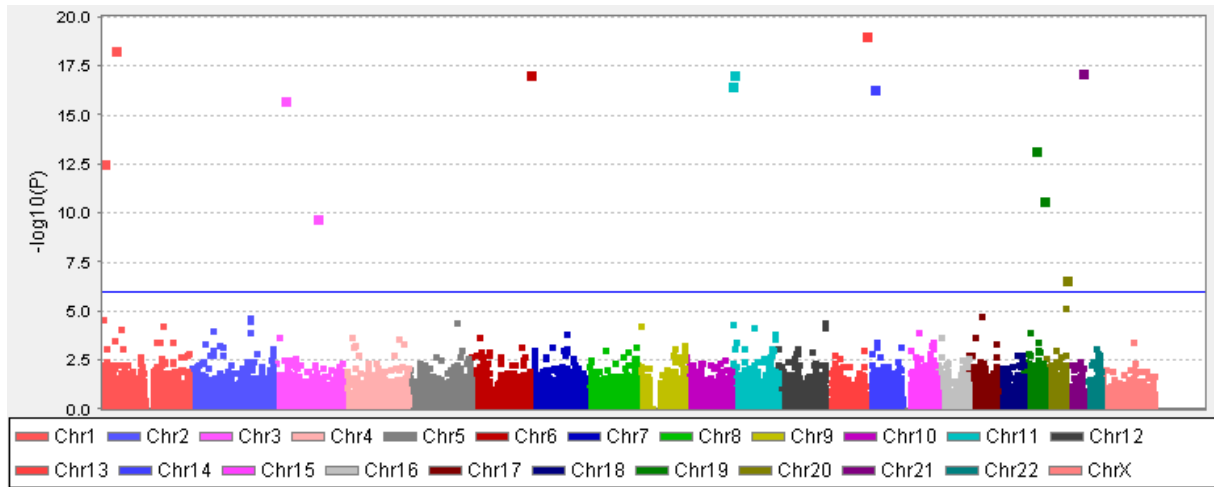


Figure B. Manhattan plot of the Fisher's exact test association p-values for the single variant analyses with $MAF \geq 0.4\%$. Chromosomes are shown on the x-axis. On the y-axis, the $-\log 10$ of the p -value is shown. The blue line represents the threshold for significance after Bonferroni correction for 43,653 variants (1.15×10^{-6} , which corresponds to a value of 5.94). Variants above this line are considered statistically significant.