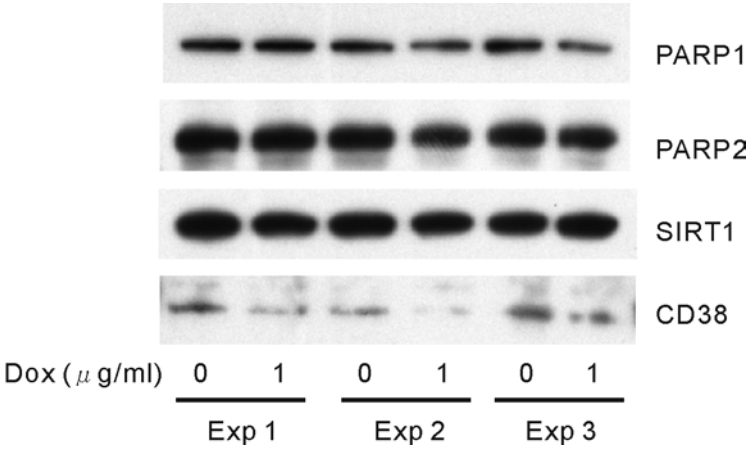


S6 Fig. Effects of induction of Nampt on the expression of NAD⁺-consuming enzymes.



HeLa cell lysates used in Exp1-3 in S4 Fig were subjected to Western blot analysis to determine the expression of PARP1, PARP2, SIRT1, and CD38 with anti-human PARP1 monoclonal (1:1000 dilution, Santa Cruz, sc-74469), anti-human PARP2 polyclonal (1:10000 dilution, Active Motif, 39744), anti-human SIRT1 monoclonal (1:10000, Cell Signaling, #8469), and anti-human CD38 monoclonal (1:1000 dilution, Santa Cruz, sc-374650) antibodies, respectively.