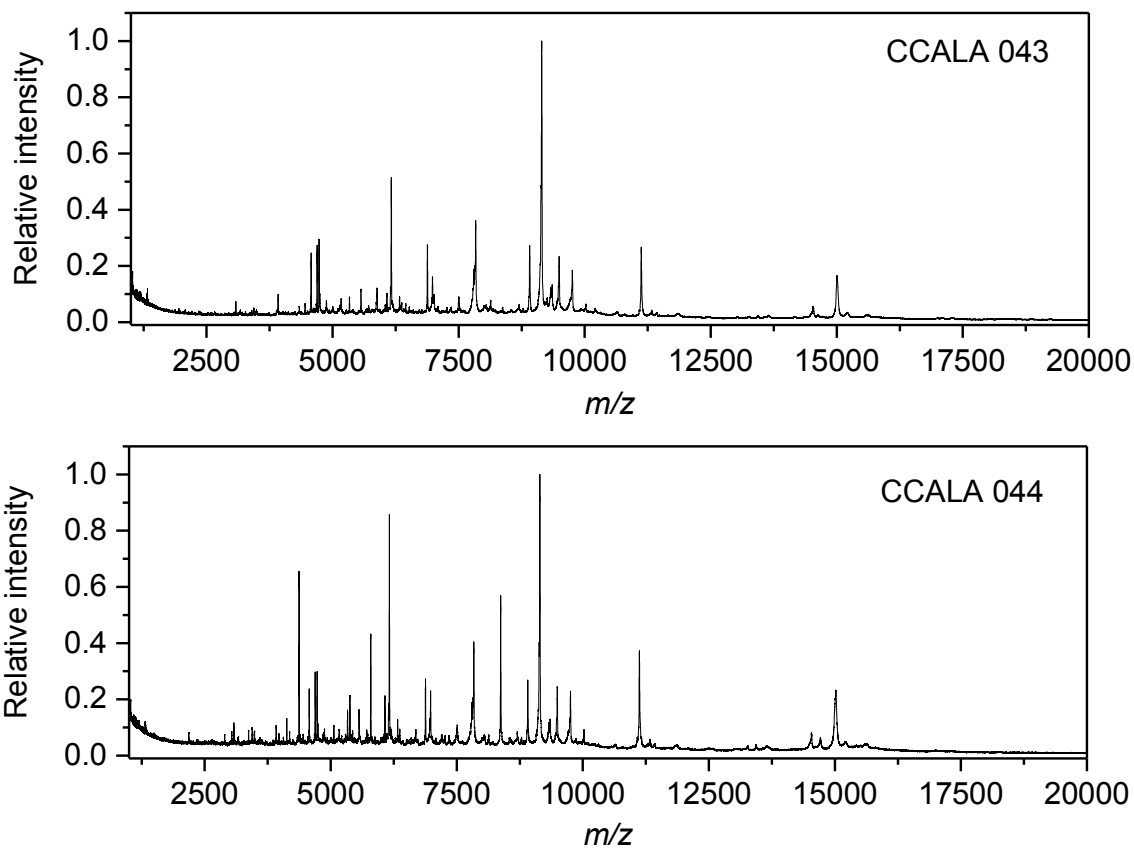


Šebela et al., Supplementary figure 2.

MALDI-TOF MS of intact cyanobacterial cells. Profile mass spectra acquired for closely related *Chroococciopsis cubana* isolates (CCALA 043 and CCALA 044) using the dried-droplet technique and formic acid-sinapinic acid binary matrix.



MALDI-TOF MS of intact cyanobacterial cells. Profile mass spectra acquired for *Chroococcidiopsis thermalis* (CCALA 050; top) and *Chroococcidiopsis cubana* (CCALA 040; bottom) using the dried-droplet technique and formic acid-sinapinic acid binary matrix.

