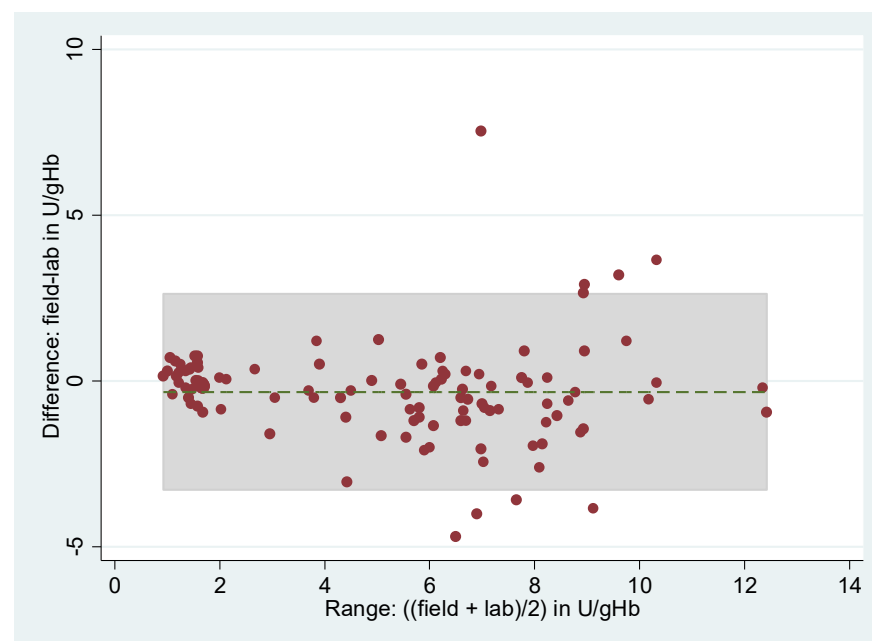
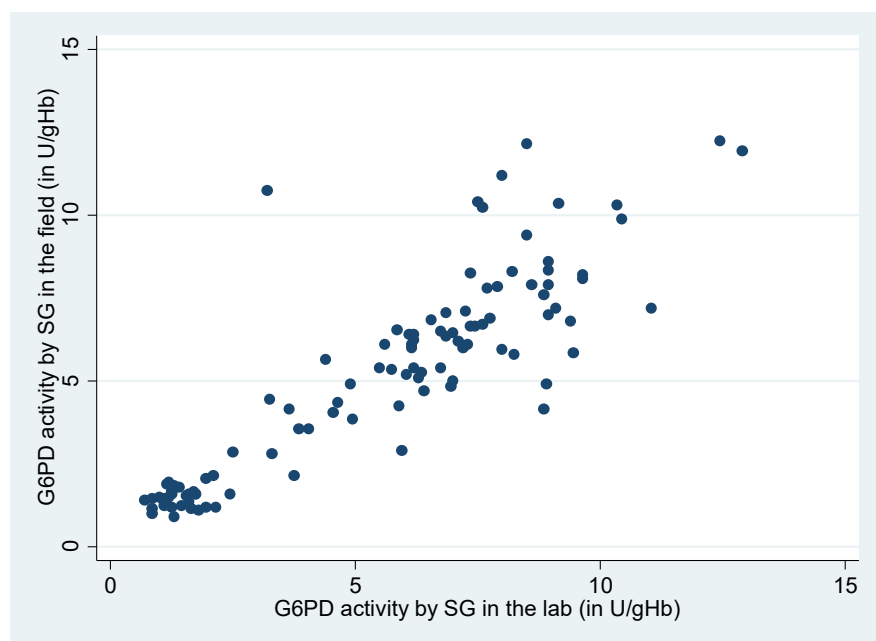


Supp. Figure 3: Comparison of the G6PD STANDARD (SG) in the lab and field a) Scatter plot and b) Bland-Altman plot



a) $r_s=0.8765$; $p<0.001$, $n=106$ b) Mean difference: -0.33 U/gHb, 95% LoA: -3.29 to 2.63 U/gHb (grey shaded area)