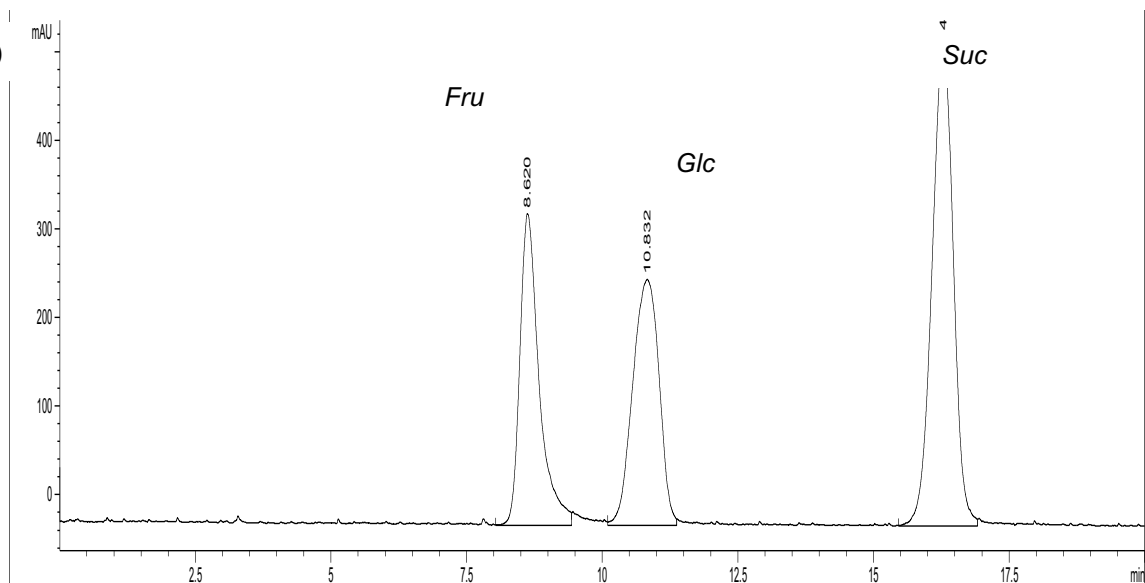
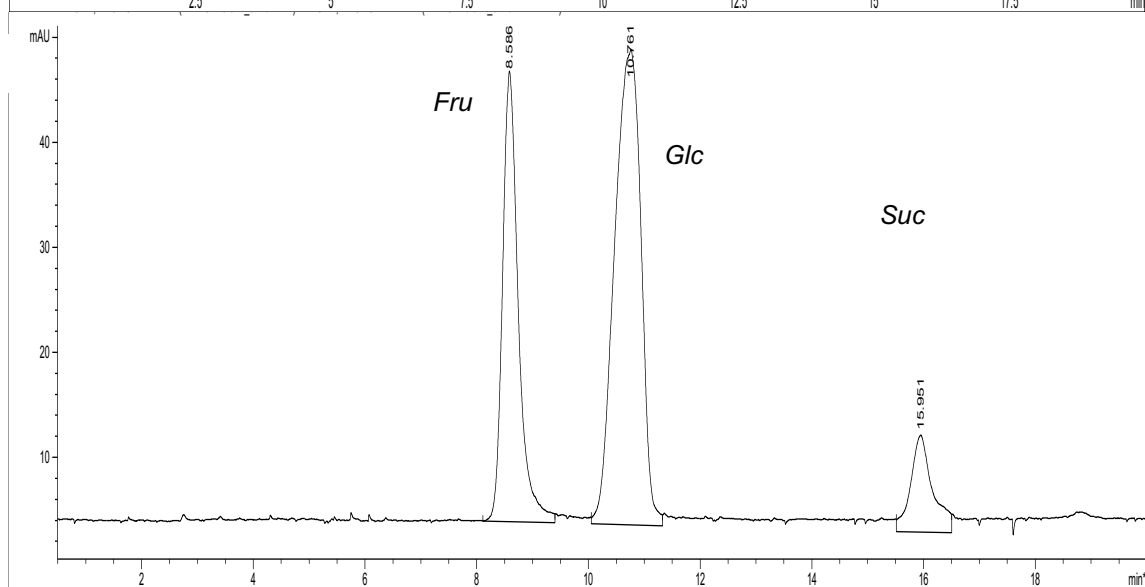


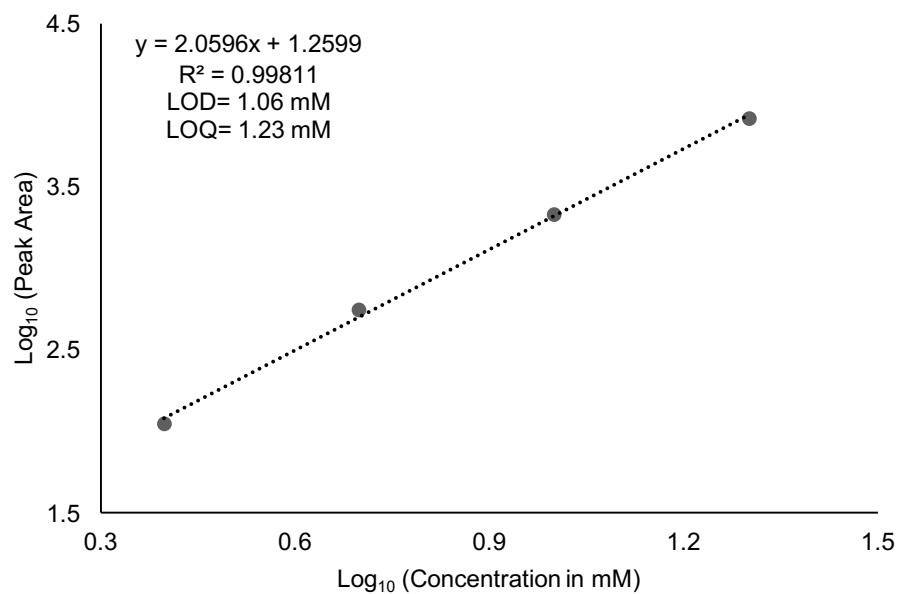
**A (i)**

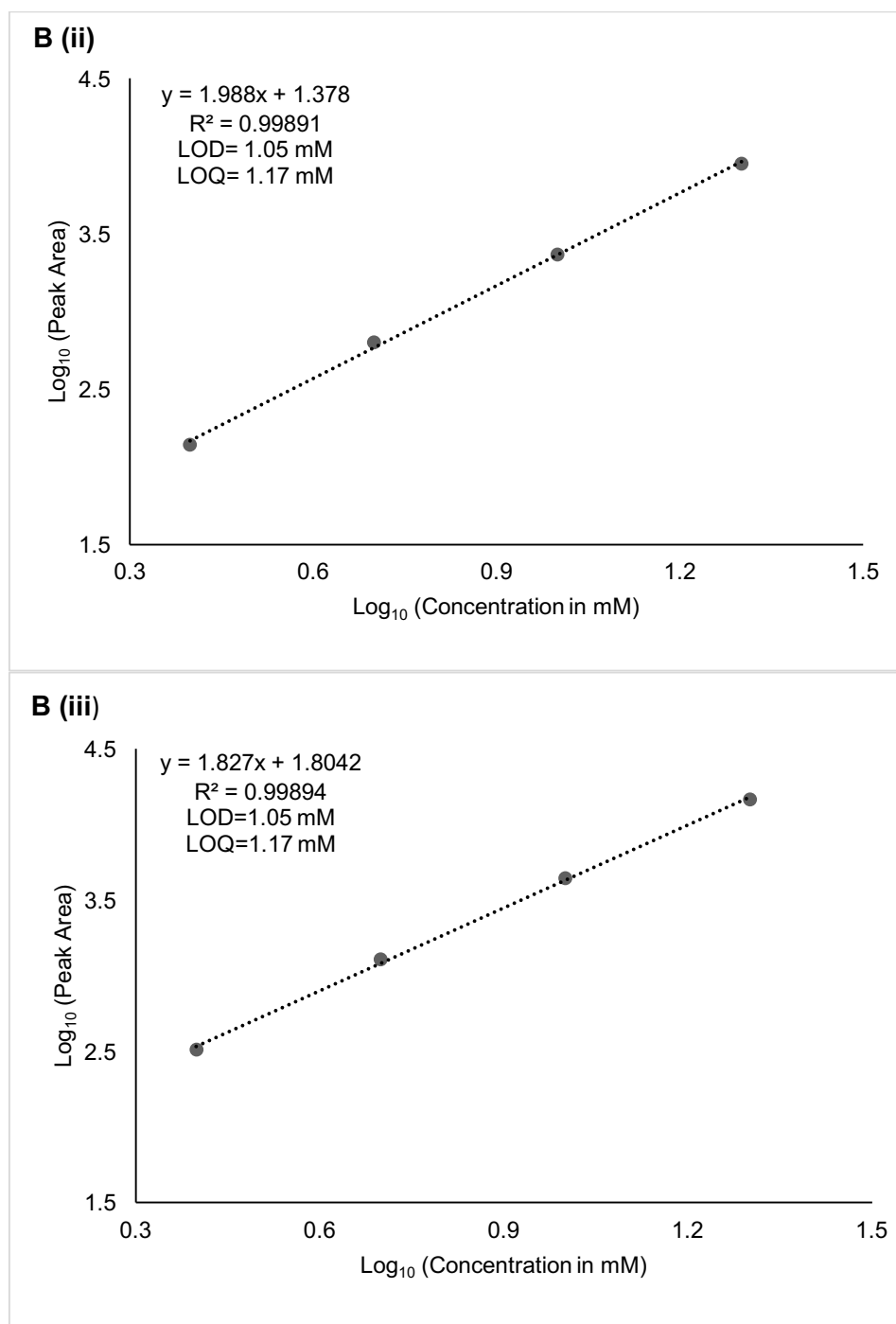


**A (ii)**



**B (i)**





**S1 Fig. Quantification of glucose (*glc*), fructose (*fru*) and sucrose (*suc*) in 2-year-old *Jatropha curcas* inflorescence (UKM JC-17 accession).** A) HPLC-ELSD chromatograms of simple soluble sugars; A (i), standard peaks and A (ii), sample peaks are indicated at the following retention times (rt): *fru* at 8.6, *glc* at 10.8 and *suc* at 16.0. The y-axis represents peak area expressed as mass absorbance unit (mAU) and the x-axis represents the rt in minutes. B) Standard curves of simple soluble sugars at 2.5-10 mM: B (i), *fru*; B (ii) and *glc*; B (iii), *suc*.