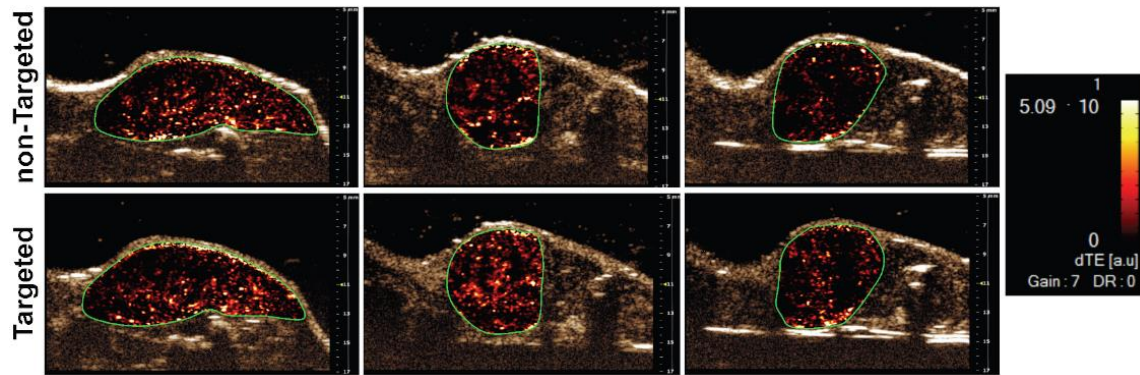
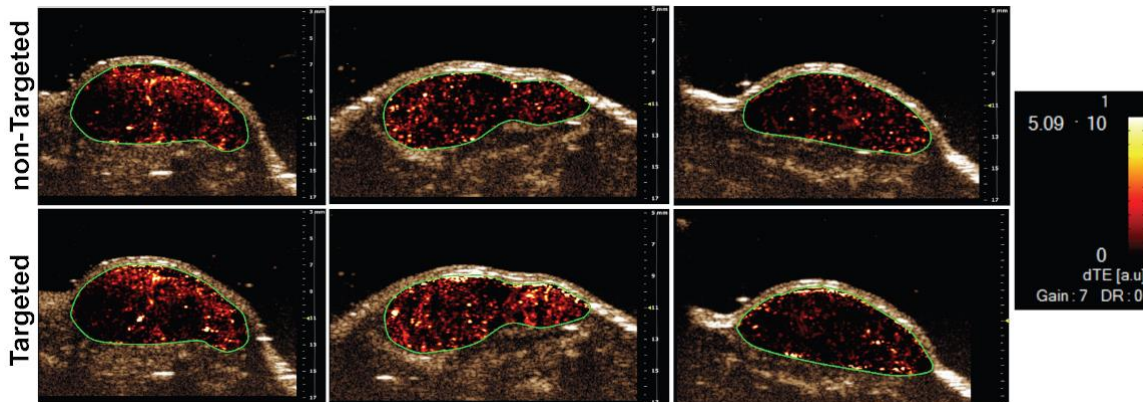


US images showing PSMA-targeting of MB_{Tz} using two different PSMA antibodies:



US images showing localization of MB_{Tz}-TCO-J591 to LNCaP tumors.

LNCaP xenograft tumors (green outline) were produced in mice as described in methods. Transverse color-coded parametric images overlaid on a nonlinear contrast mode ultrasound images were acquired 4 min after intravenous administration of either control non-targeted MB_{Tz} (top) or direct PSMA-targeted MB_{Tz}-TCO-J591 (bottom). Signals are indicated by dTE = differential targeted enhancement (color scale, right).



US images showing localization of MB_{Tz}-TCO-ARP to LNCaP tumors.

LNCaP xenograft tumors (green outline) were produced in mice as described in methods. Transverse color-coded parametric images overlaid on a nonlinear contrast mode ultrasound images were acquired 4 min after intravenous administration of either control non-targeted MB_{Tz} (top) or direct PSMA-targeted MB_{Tz}-TCO-ARP (bottom). Signals are indicated by dTE = differential targeted enhancement (color scale, right).