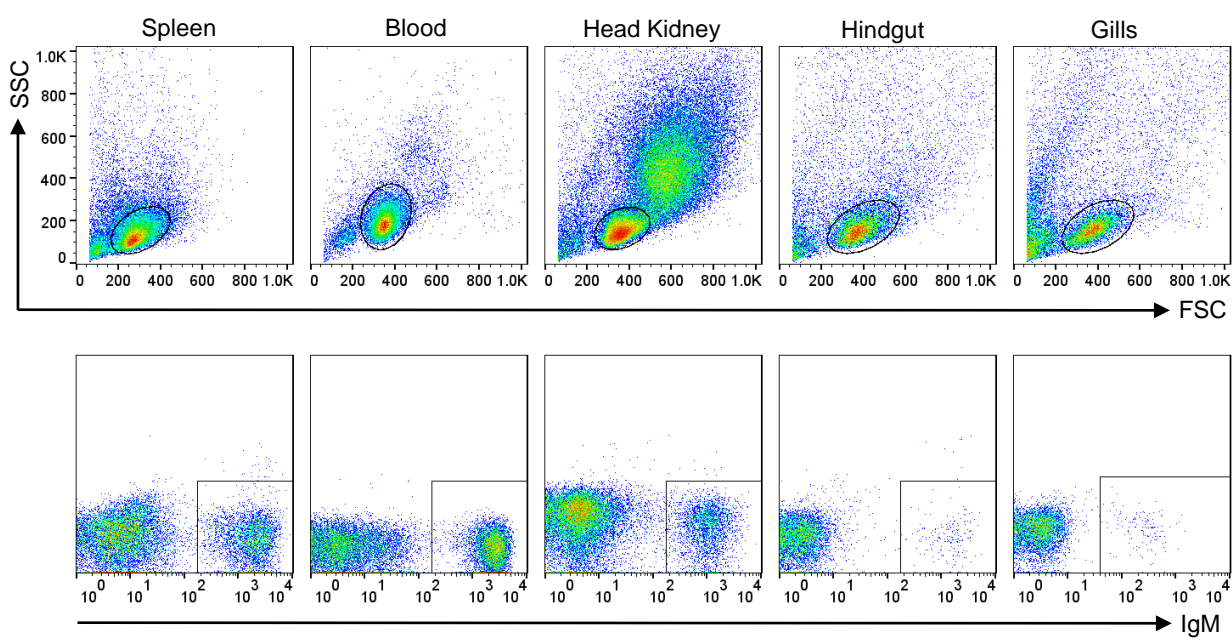


S1 Fig



**S1 Figure. Gating strategy for FACS isolation of IgM<sup>+</sup> B cells.** Flow cytometry analysis of rainbow trout leukocytes isolated from trout tissues (spleen, blood, head kidney, PBLs, hindgut and gills) and stained with an anti-IgM mAb. For each individual tissue, FSC/SSC profiles including a defined gate for lymphoid cells are shown (top row). IgM staining within the lymphoid gate is also shown (bottom row dot plots). Lymphoid IgM<sup>+</sup> (lower right corner gate) cells were FACS isolated as described in Methods. A representative experiment out of 3 independent assays is shown (n=9).