

Signature classification

Figs A and B present the circular dendrograms of the two additional features: statistical complexity and Fisher information.

Figs C and D show the classification by the rule of the parallelepiped of genuine signatures using statistical complexity and Fisher information obtained as result of the application of entropy classification.

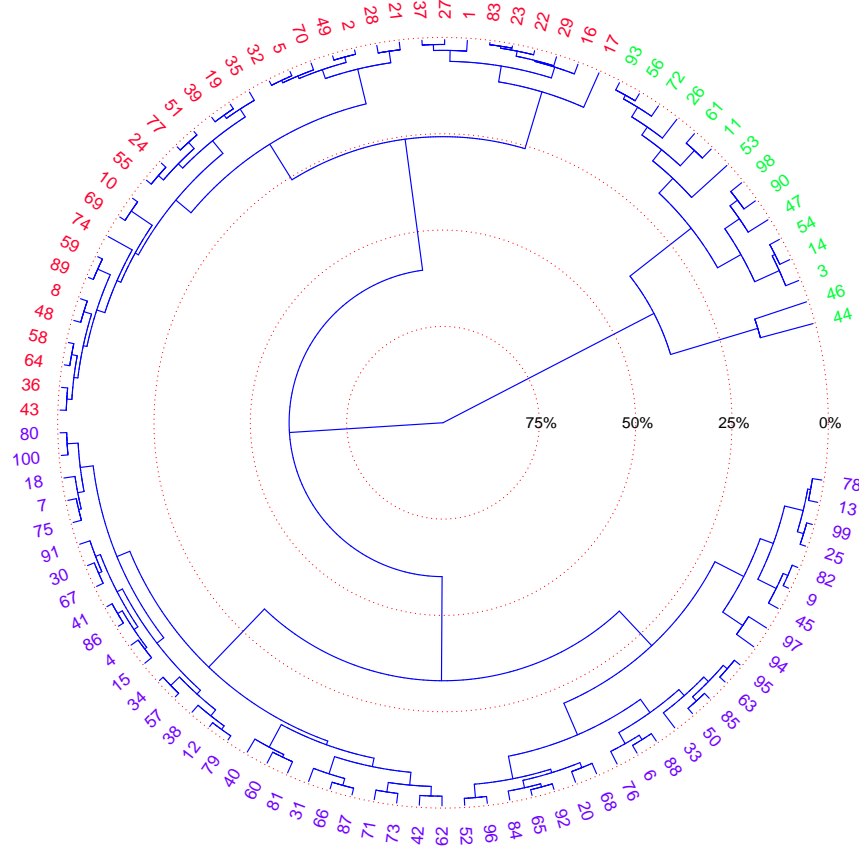


Figure A: Neighbor-joining, rooted, circular dendrogram clustering of genuine signatures by statistical complexity: H1, H2, and H3, in red, blue, and green, respectively.

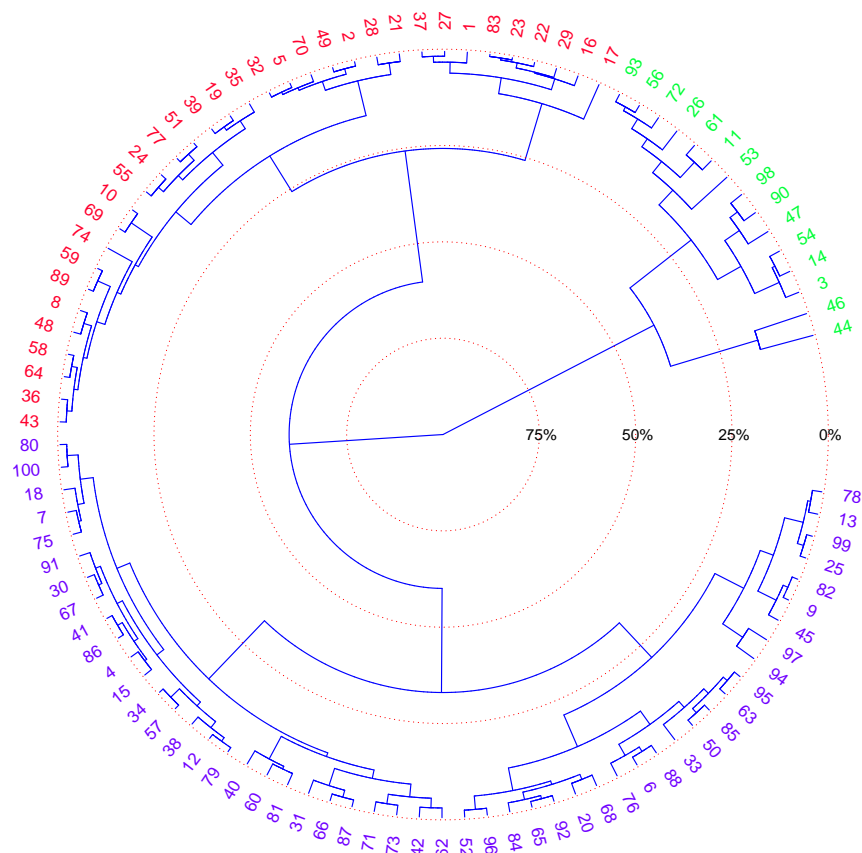


Figure B: Neighbor-joining, rooted, circular dendrogram clustering of genuine signatures by Fisher information: H1, H2, and H3, in red, blue, and green, respectively.

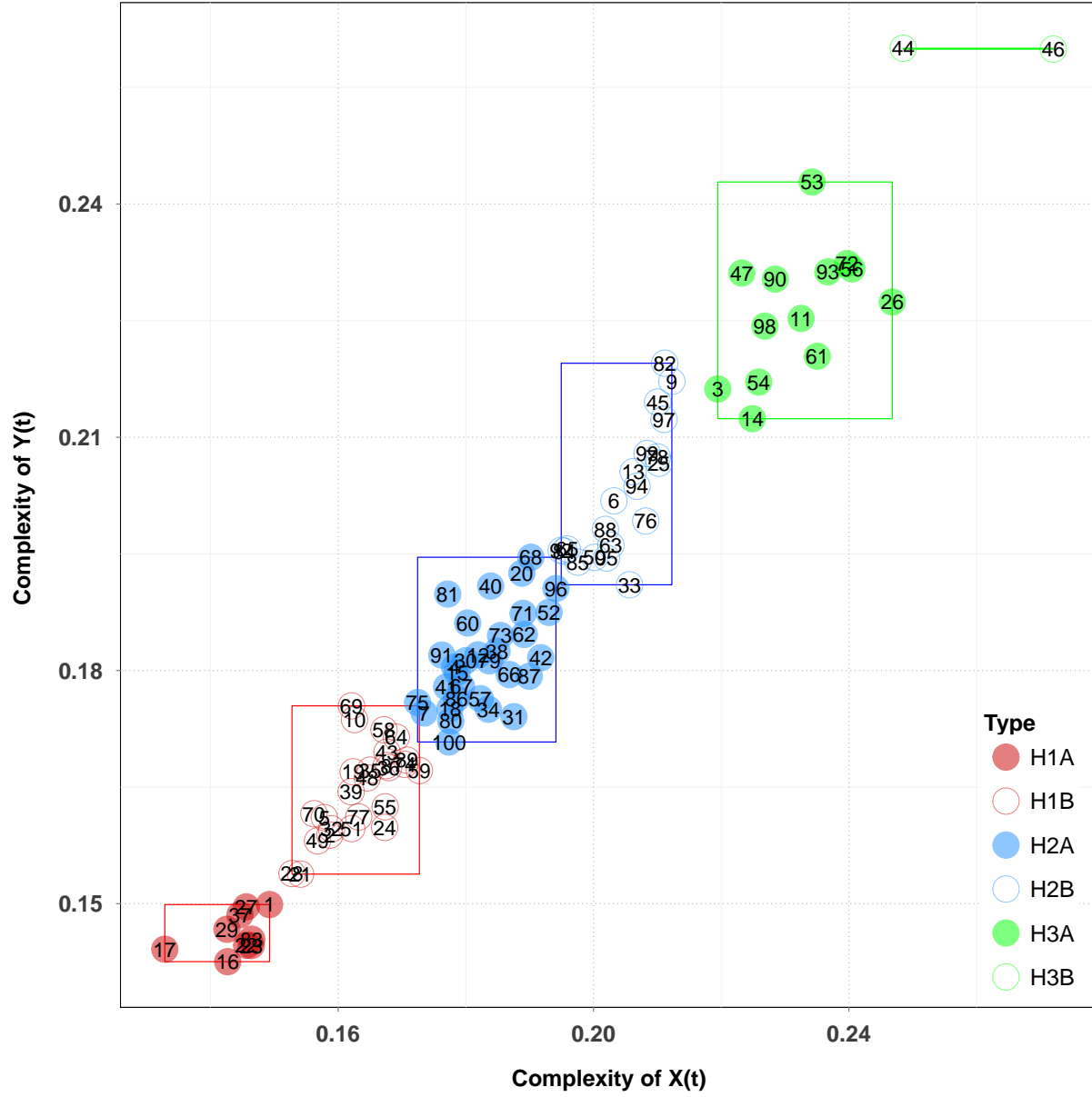


Figure C: Classification by the rule of the parallelepiped of genuine signatures using statistical complexity obtained as result of the application of entropy classification. Each subject is identified by its ID.

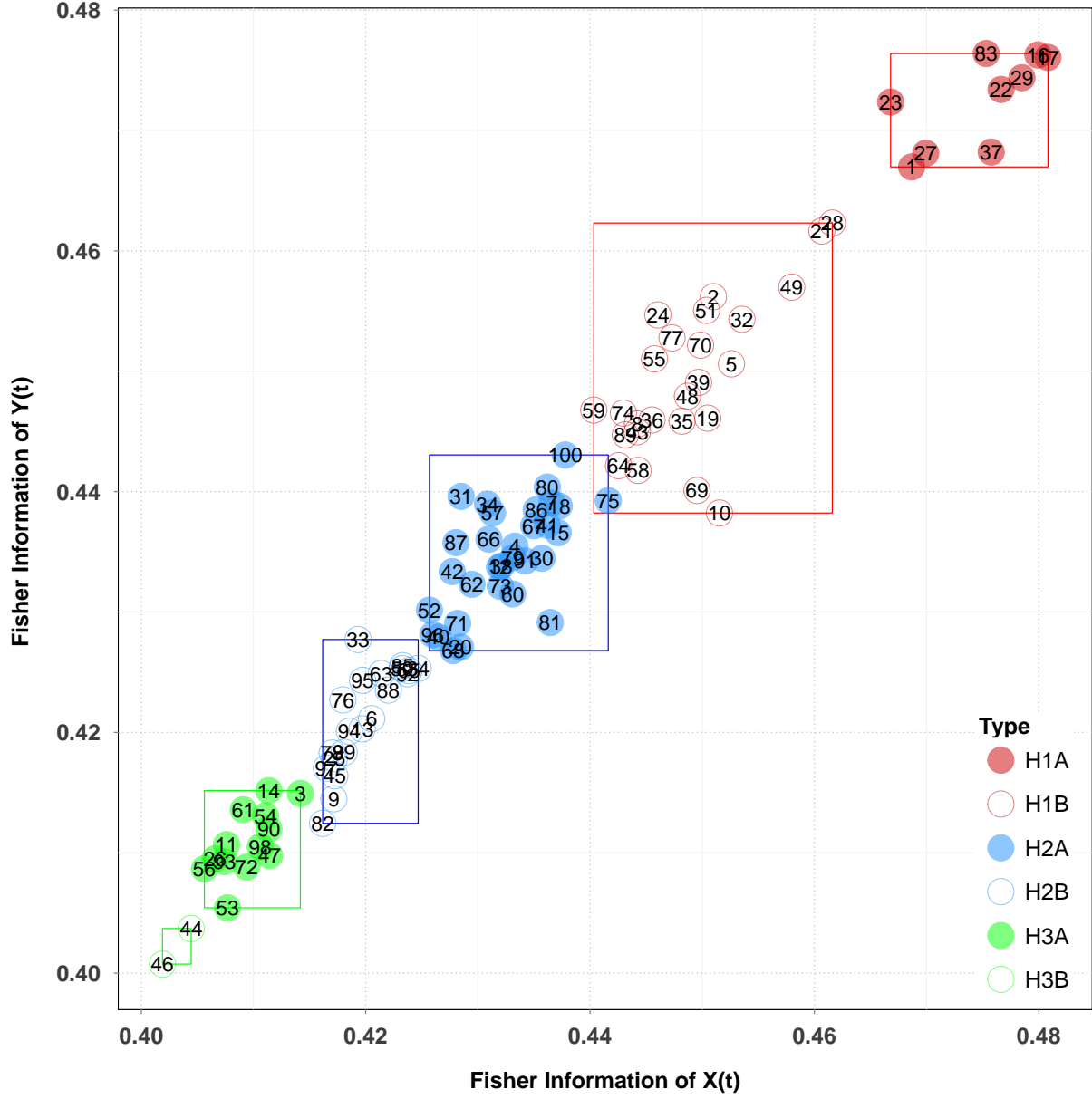


Figure D: Classification by the rule of the parallelepiped of genuine signatures using Fisher information obtained as result of the application of entropy classification. Each subject is identified by its ID.