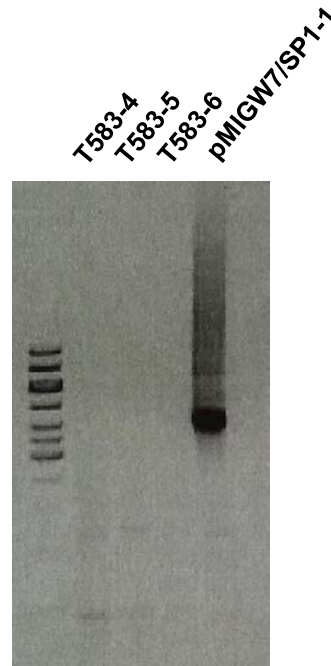


## S3 Supporting Information



**S3 Fig. Prove that T1 lines do not contain Agrobacterium.** A PCR was performed using primers targeting the binary vector backbone. The following primers have been used: Ext-Flanking-Forward 5`-GAAGCCATGAAAACCGCCAC-3`; Ext-Flanking-Reverse 5`-GCCTGTCGCGTAACTTAGGA-3`. The binary vector pMIGW7/SP1-1 was used as positive control.