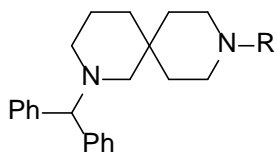


**Supporting Table 5.** SAR around the amide region. Activity in grp78-luciferase assay is shown.



R	Activity
<p>Chemical structure: 5-methyl-2-isoxazolone with a sulfonyl group (-SO<sub>2</sub>-) at the 4-position.</p>	inactive
<p>Chemical structure: 5-methyl-2-isoxazolone with an amide group (-NH-C(=O)-) at the 4-position.</p>	inactive
<p>Chemical structure: 5-methyl-2-isoxazolone with an amide group (-NH-C(=O)-) at the 4-position, different orientation.</p>	inactive
<p>Chemical structure: 5-methyl-2-isoxazolone with a 1,2,4-oxadiazole ring at the 4-position.</p>	inactive
<p>Chemical structure: 5-methyl-2-isoxazolone with a propyl chain at the 4-position.</p>	inactive
<p>Chemical structure: 5-methyl-2-isoxazolone with a 1,2,4-oxadiazole ring at the 4-position, different orientation.</p>	inactive