

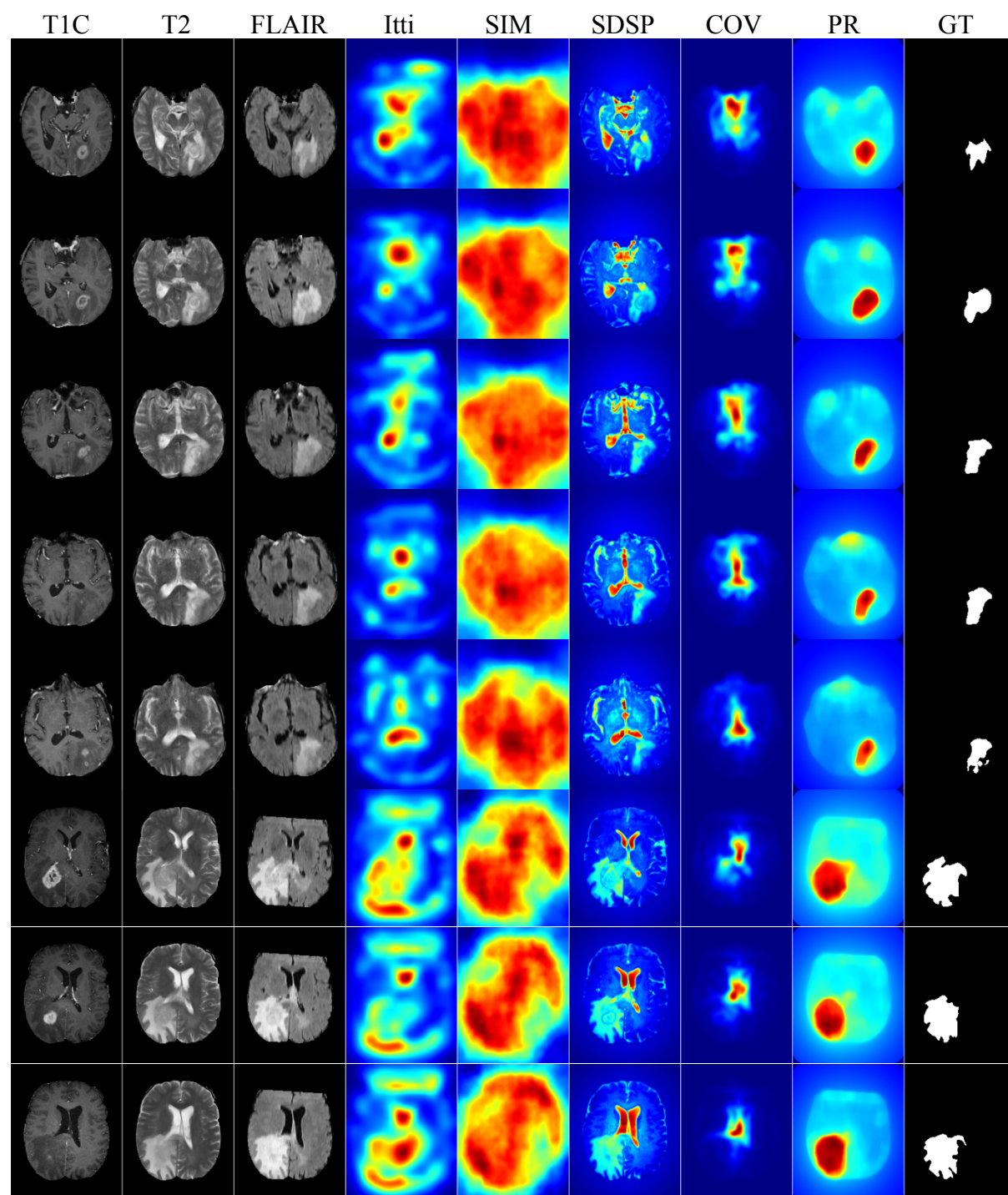
Supporting Information

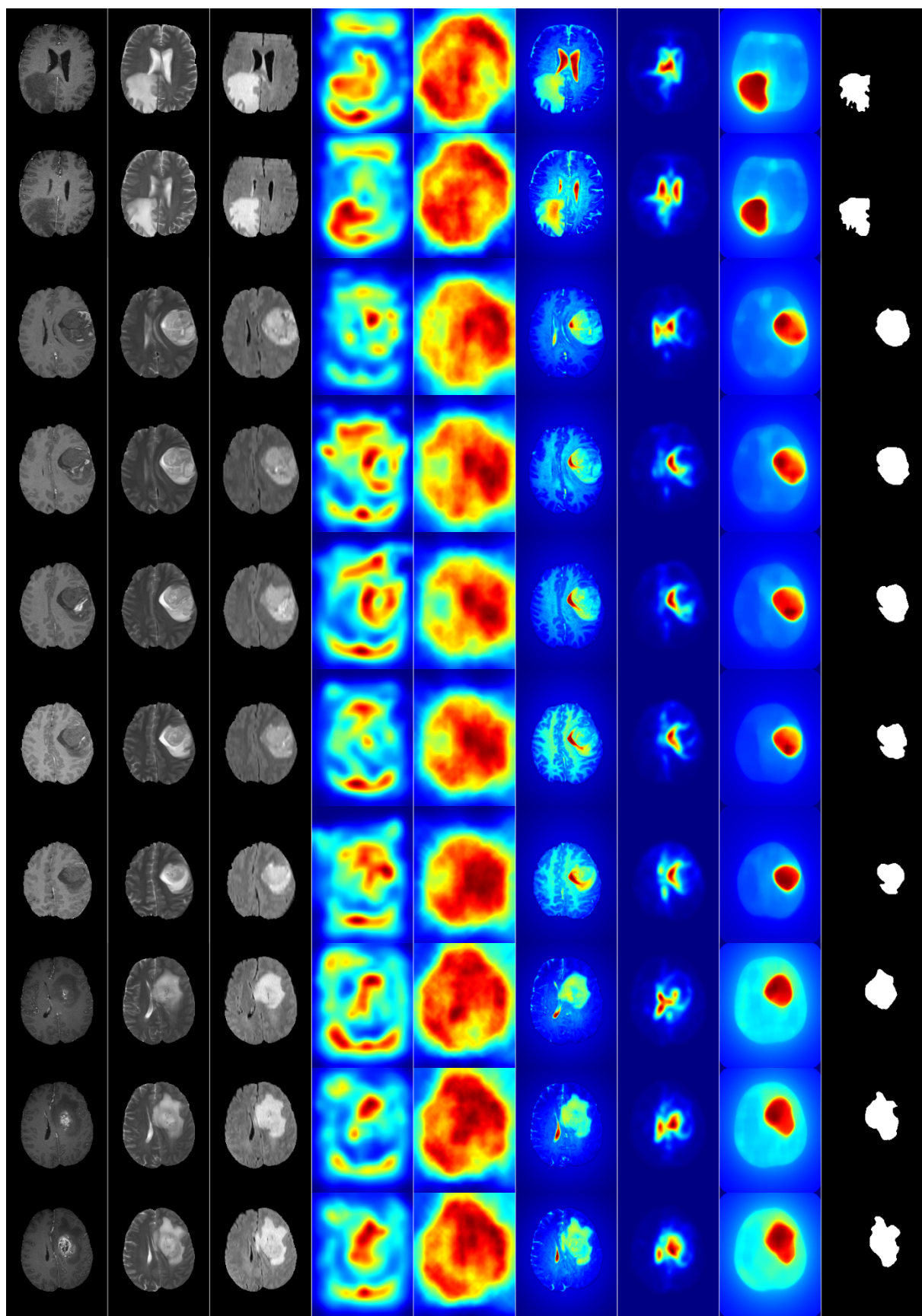
A Novel GBM Saliency Detection Model using Multi-channel MRI

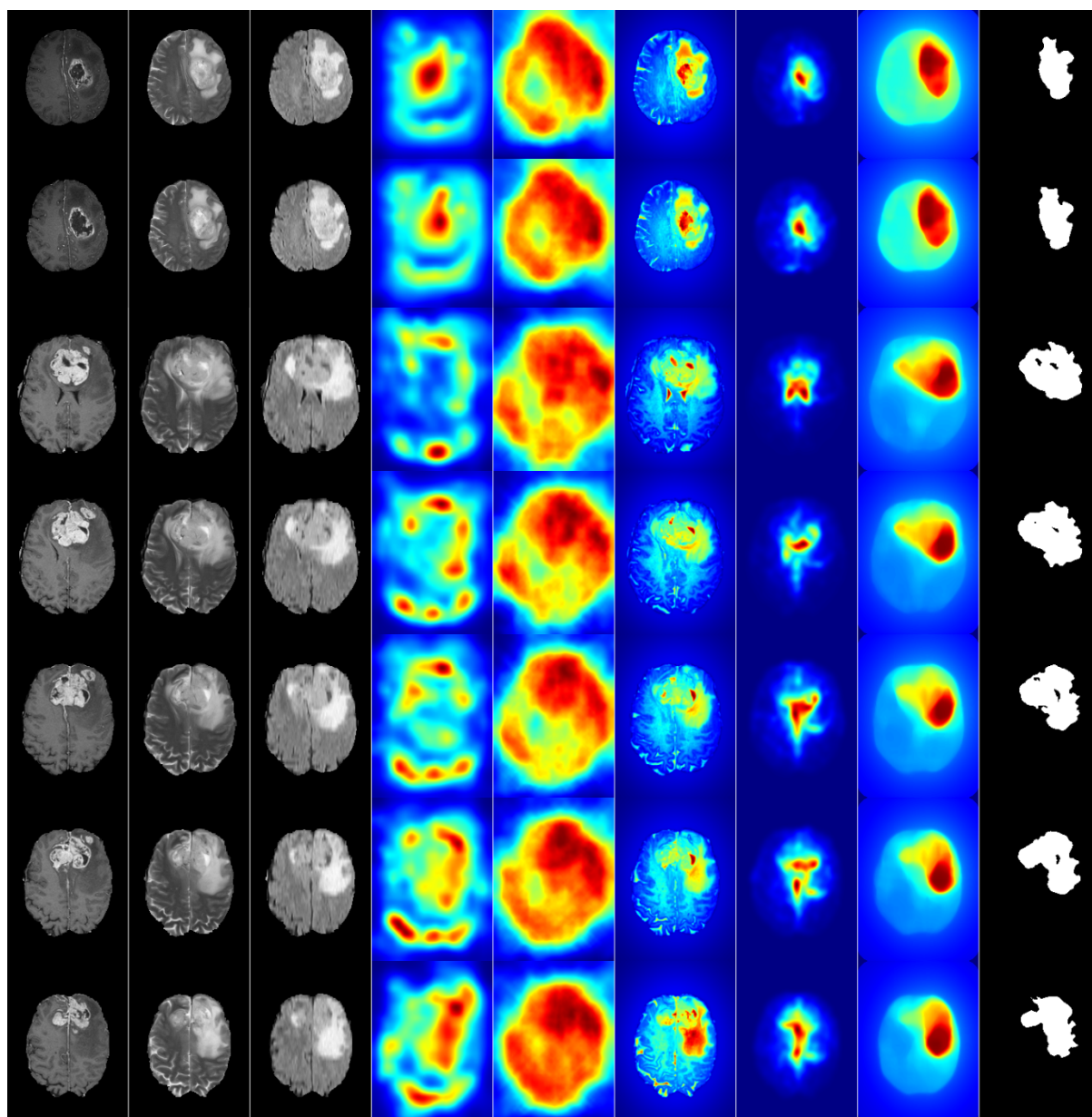
Subhashis Banerjee, Sushmita Mitra, B. Uma Shankar, Yoichi Hayashi

S1 Fig. Additional visual examples of saliency maps by four state-of-the-art models and our proposed model

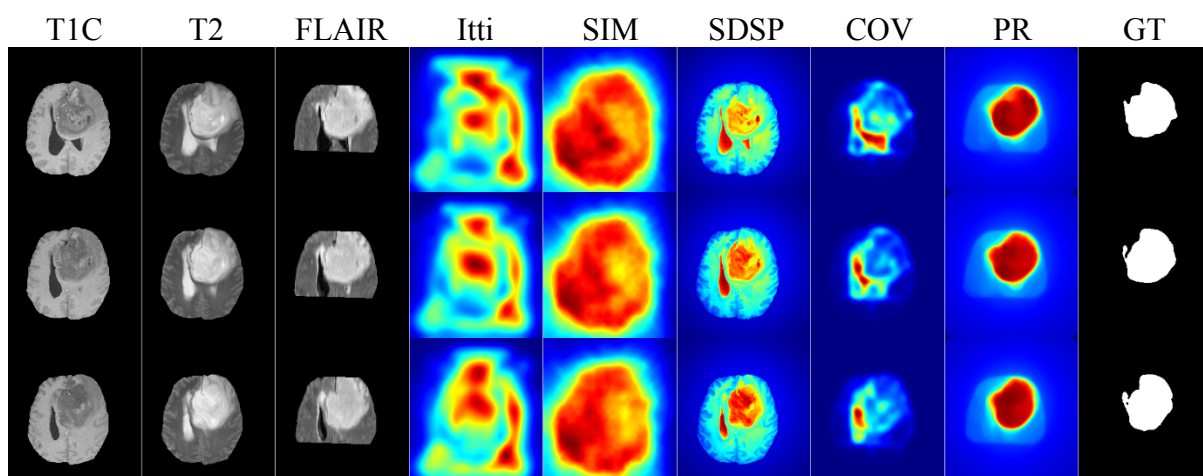
Saliency maps for 2D MR slices on HG GBM

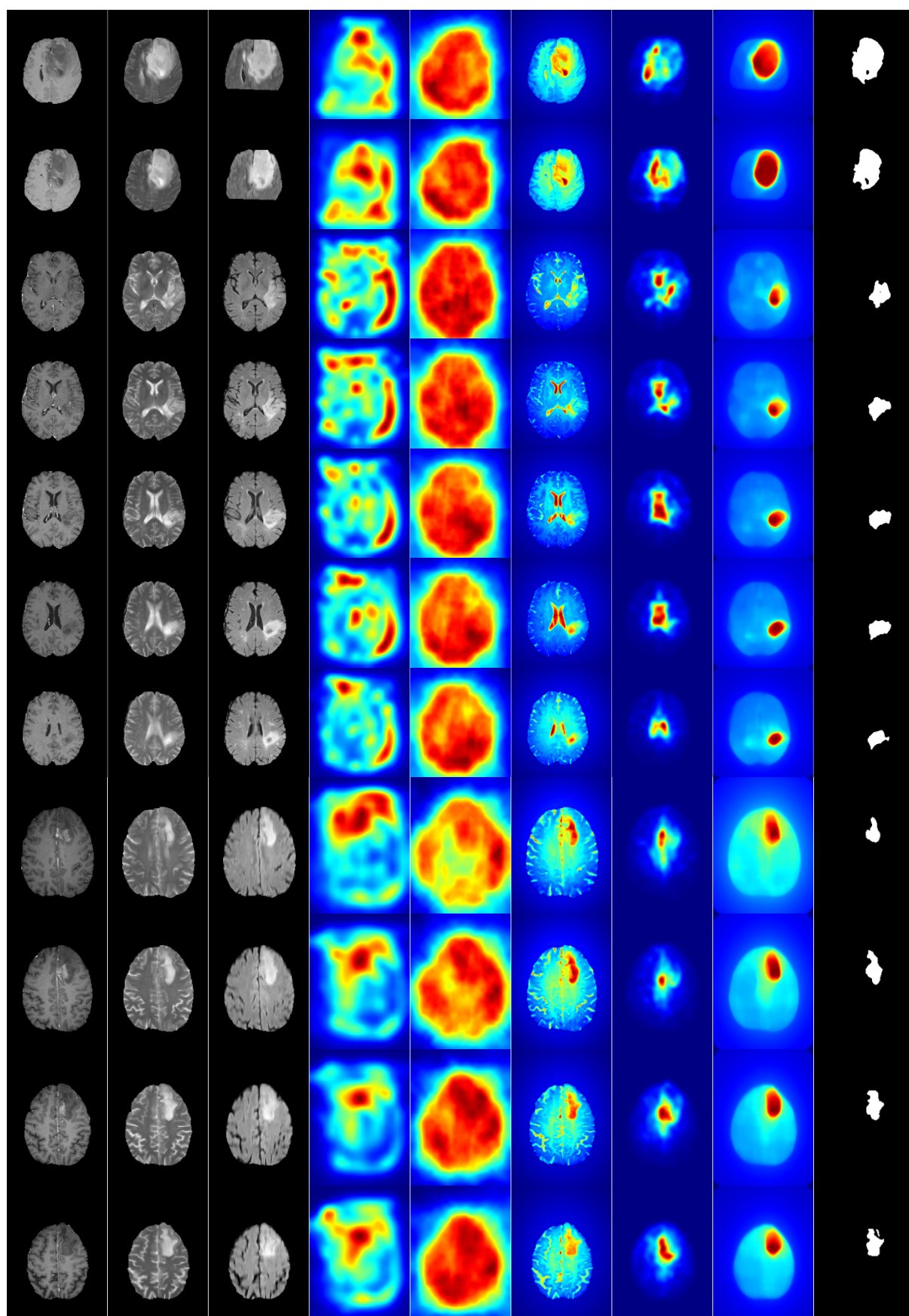


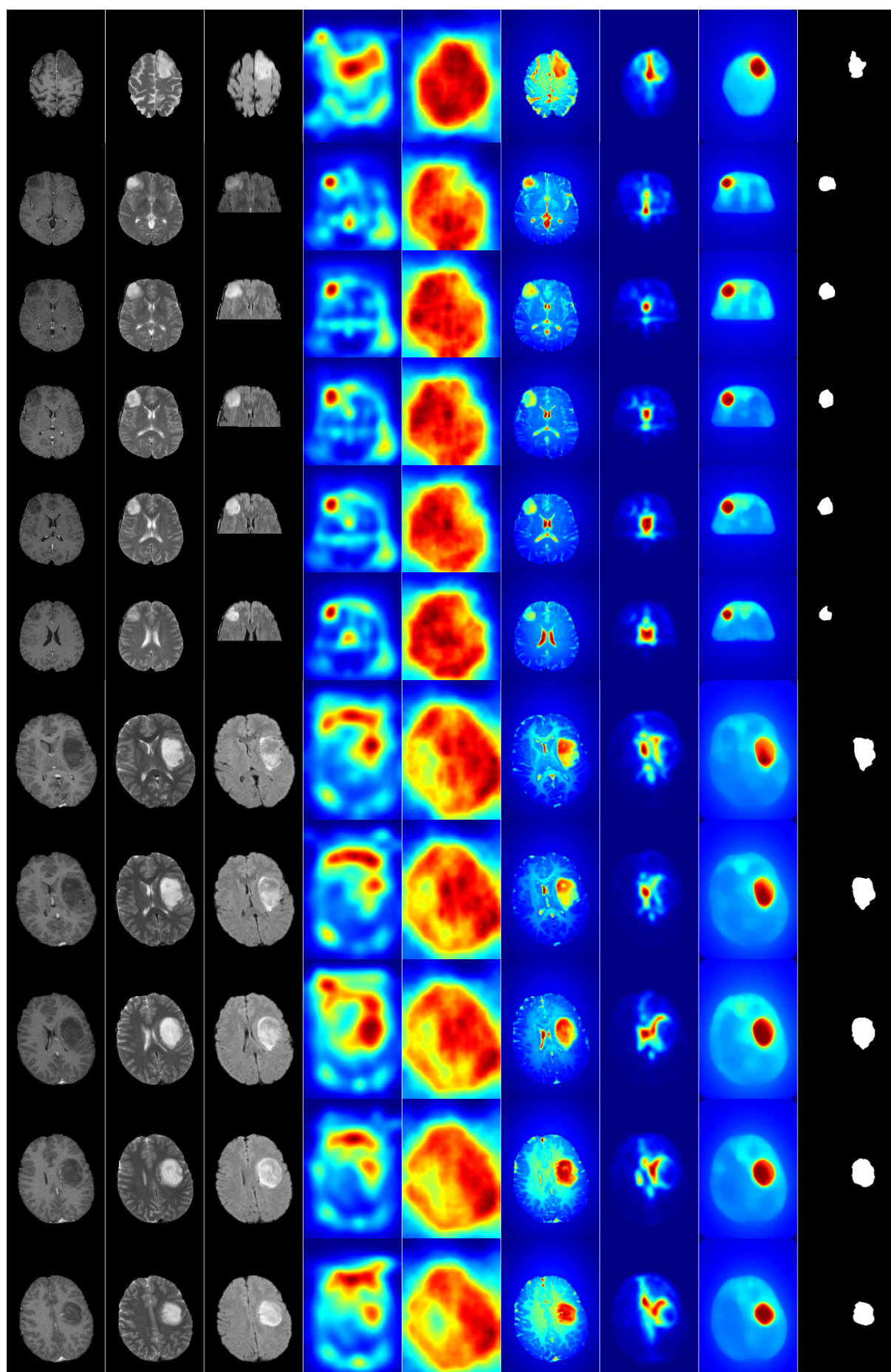




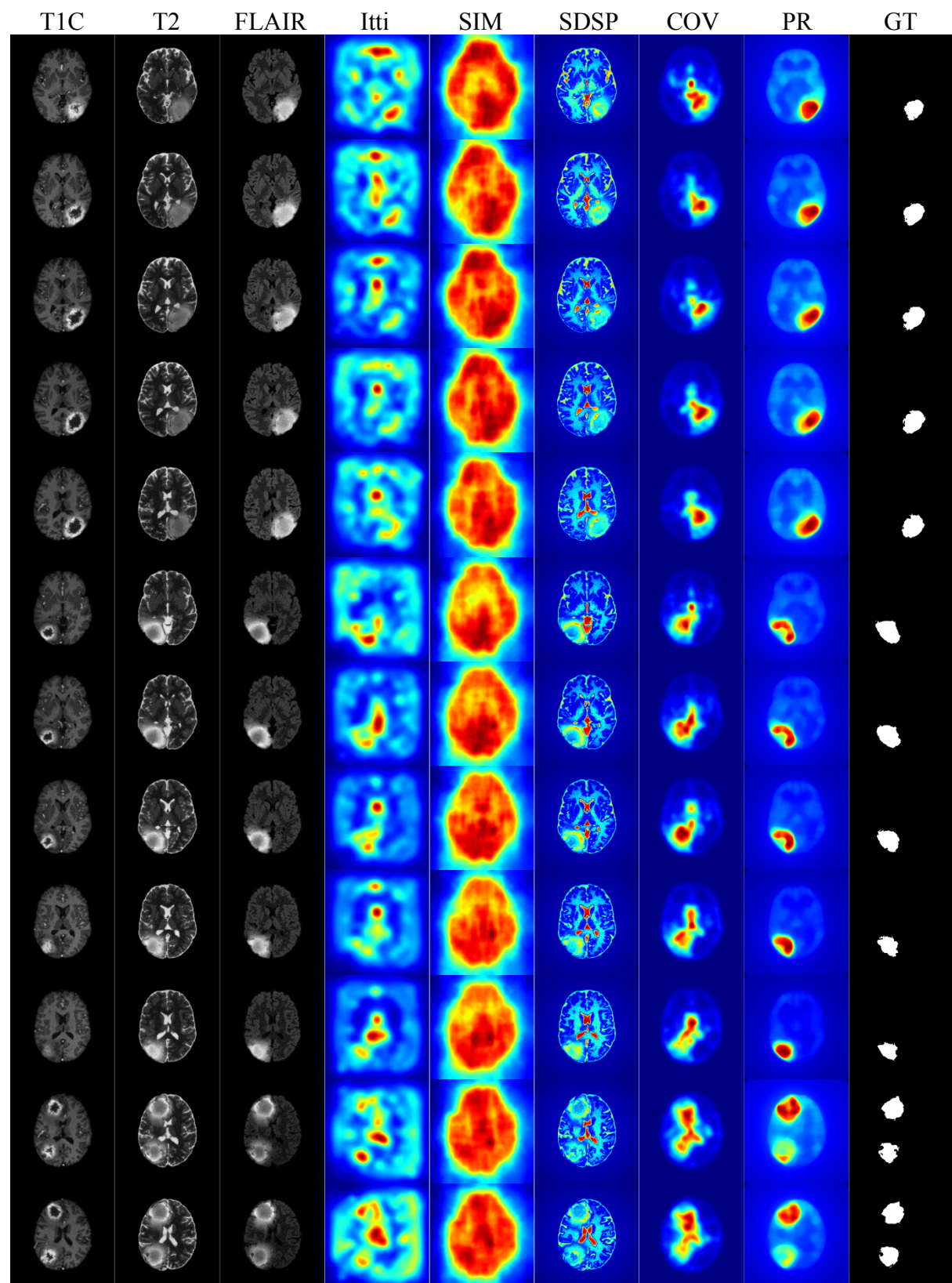
Saliency maps for 2D MR slices with LG GBM

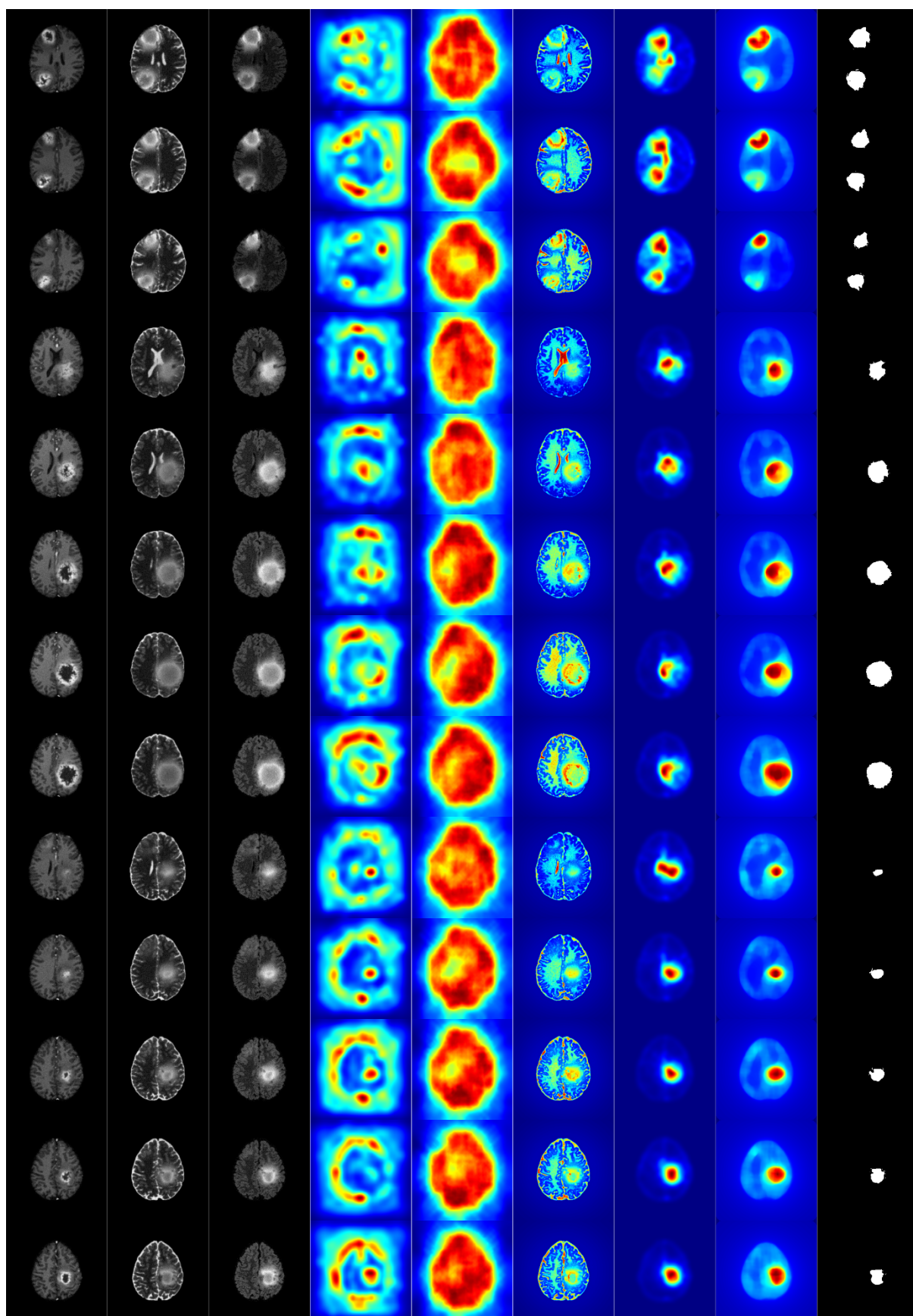






Saliency maps for 2D MR slices with SimHG GBM





Saliency maps for 2D MR slices with SimLG GBM

