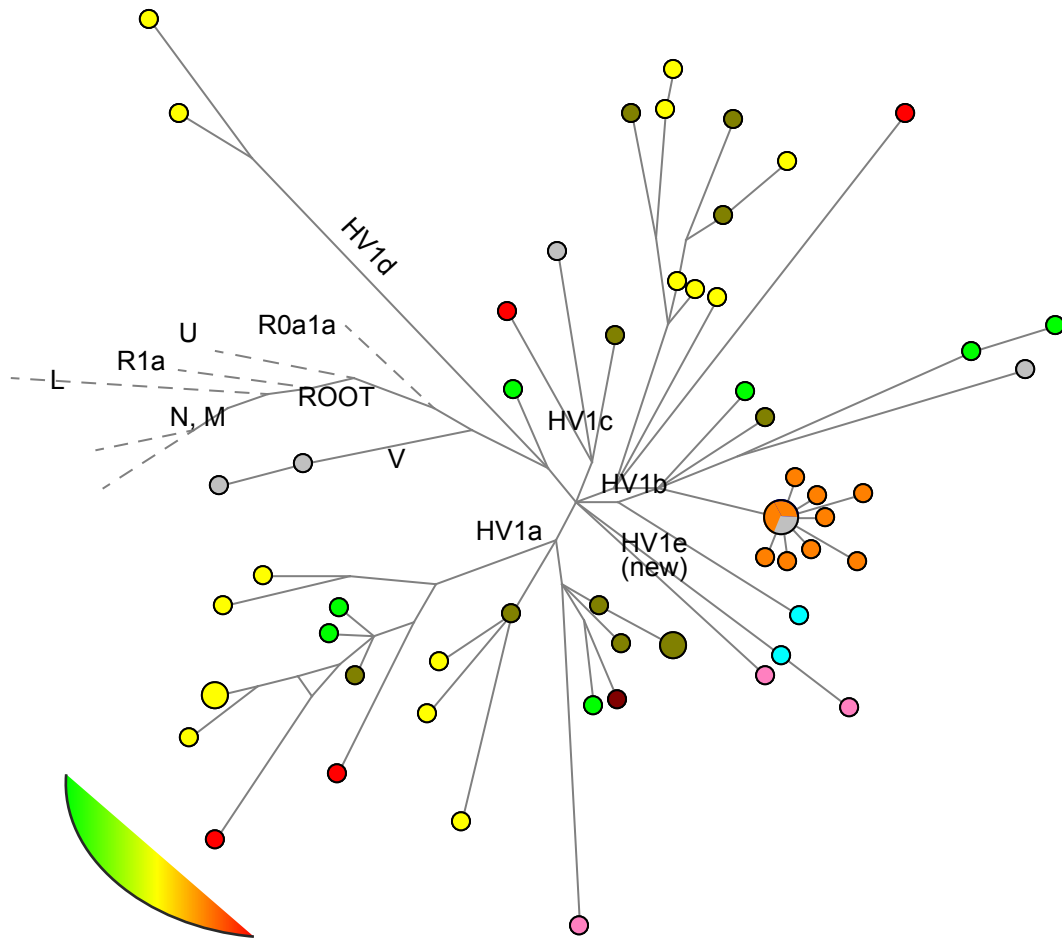


S8 Fig. Median-joining networks for major lineage blocks: haplogroup HV1.
 Mutations are given equal weights



LEGEND:

- | | | |
|--|--|---|
| ■ South Italy | ■ Africa | ■ Middle East |
| ■ North Italy | ■ North/Western Europe | ■ Caucasus |
| ■ Italy "Others" | ■ South Europe | ■ East Europe |
| | | ■ No Info |