

Electronic Supporting Information: S2 Dataset

Stereochemical control in the Still-Wittig rearrangement synthesis of cyclohexyl (*Z*)-alkene inhibitors of Pin1

Xingguo R. Chen, Shuang A. Fan, Rachel I. Ware, and Felicia A. Etzkorn*

Department of Chemistry, Virginia Tech, Blacksburg, Virginia 24061

*Corresponding author

E-mail: fetzkorn@vt.edu

Pin1 inhibition plots for (*2R,5S*)-1, (*2S,5R*)-1 and (*2S,5S*)-1.

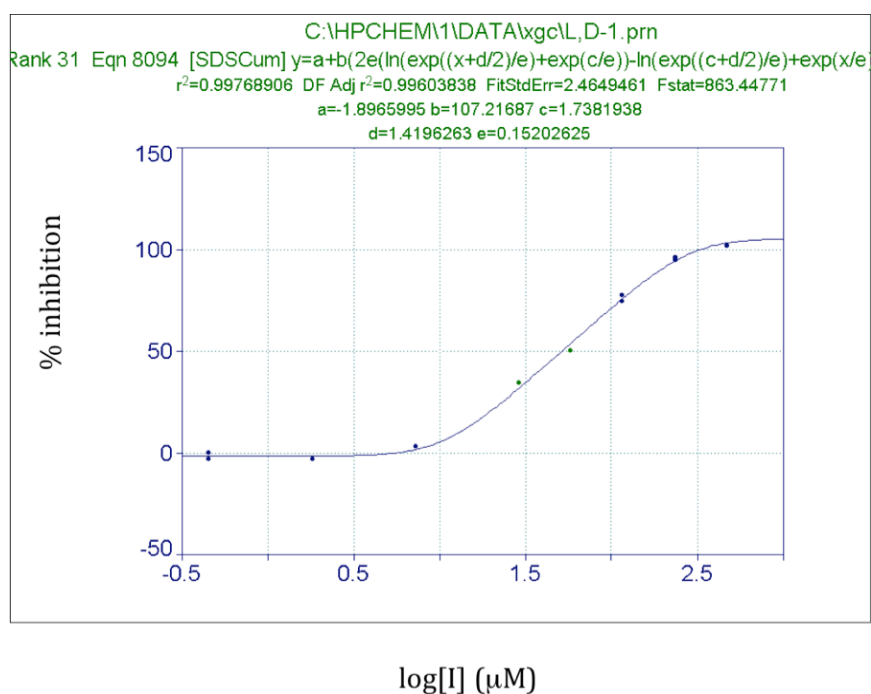
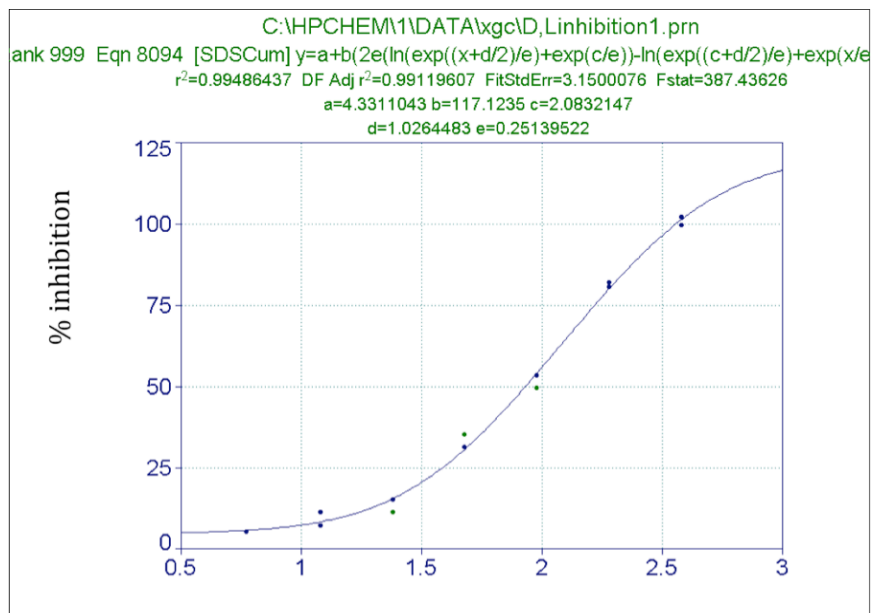
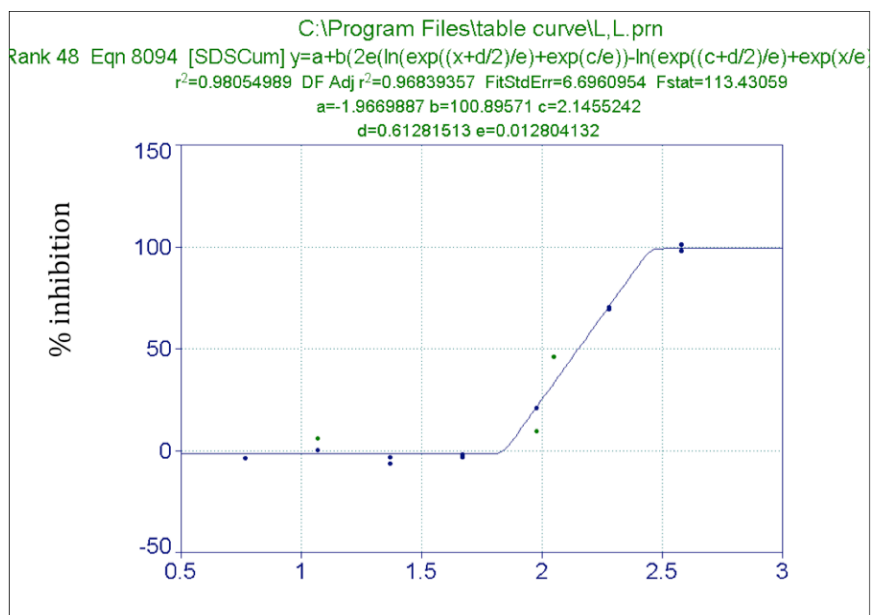


Fig A in S2 Dataset. Inhibition of Pin1 by (*2R,5S*)-1, $IC_{50} = 52 \pm 4 \mu M$.



log[I] (µM)

Fig B in S2 Dataset. Inhibition of Pin1 by (2S,5R)-1, $IC_{50} = 85 \pm 10 \mu M$.



log[I] (µM)

Fig C in S2 Dataset. Inhibition of Pin1 by (2S,5S)-1, $IC_{50} = 140 \pm 20 \mu M$.