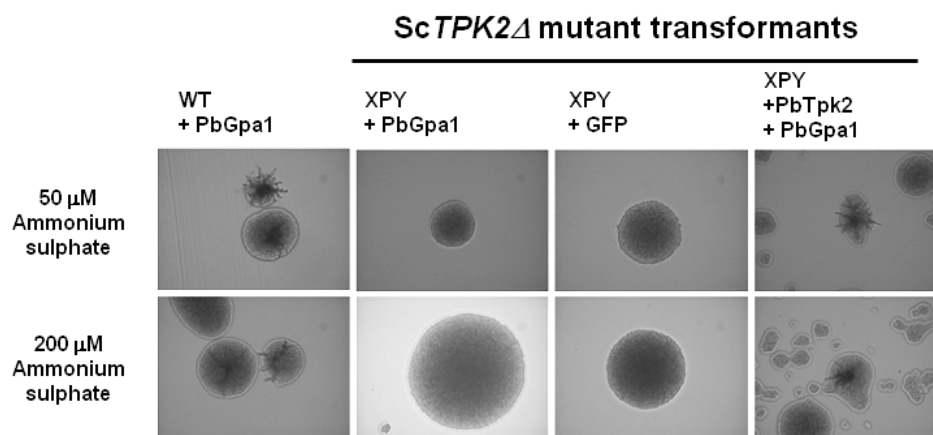
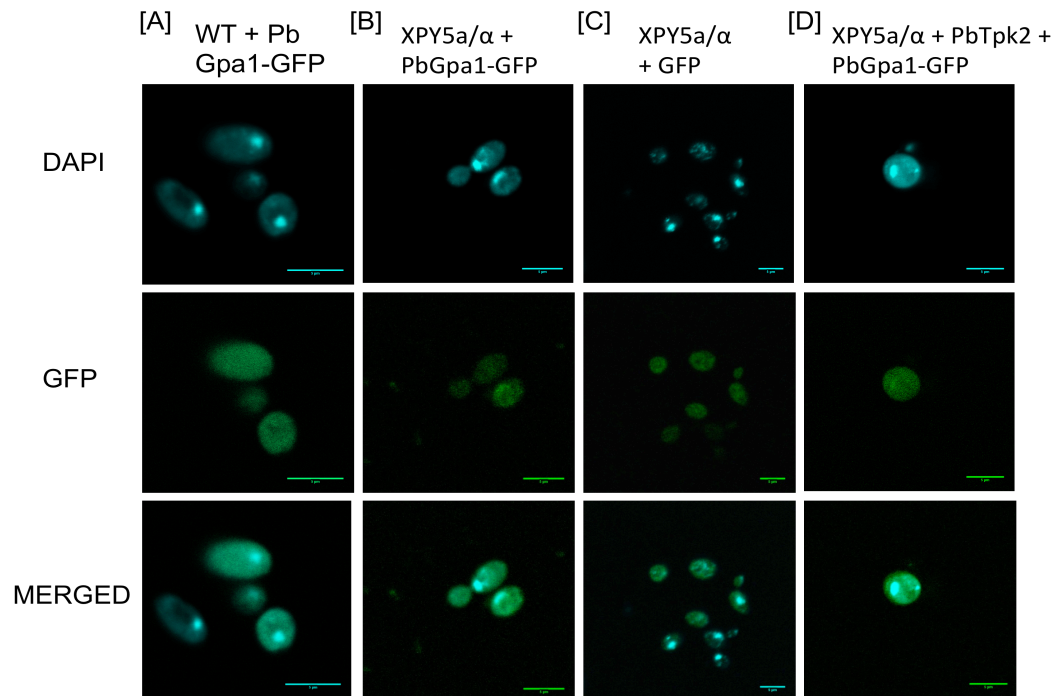


S4 Fig. PbGpa1 does not block pseudohyphae formation. (A) *P. brasiliensis* *GPA1-GFP* was transformed with or without *PbTPK2* into the *S. cerevisiae* MLY61a α (WT) and the *TPK2* Δ mutant XPY5a/ α (XPY) and then the transformants were streaked on SLAD agar and an individual colony was observed under 20x magnification. The XPY5a/ α /*PbGPA1* transformant was unable to produce pseudohyphae but the MLY61a/ α /*PbGPA1* transformant and the XPY5a/ α /*PbTPK2*/*PbGPA1* co-transformant could both produce pseudohyphae in response to a limited nitrogen supply. PbGpa1 does not block bind Tpk2 to block pseudohyphae formation. **(B)** **Pan-cellular distribution of PbGpa1 in *S. cerevisiae* cells.** Confocal microscopy of cells expressing PbGpa1-GFP, in which the nucleus was localized by staining with DAPI.

A



B



Scale Bar: 5 μ m