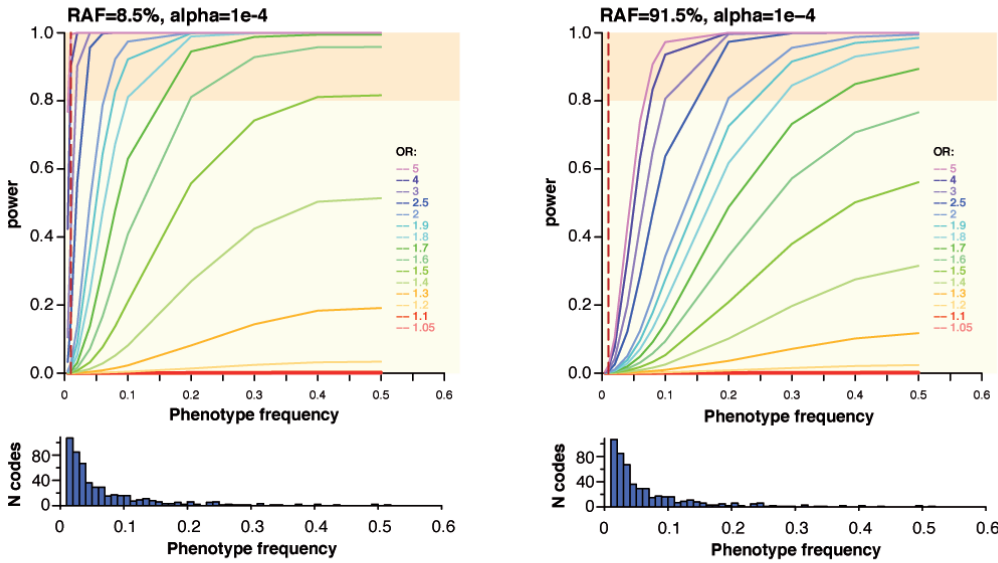
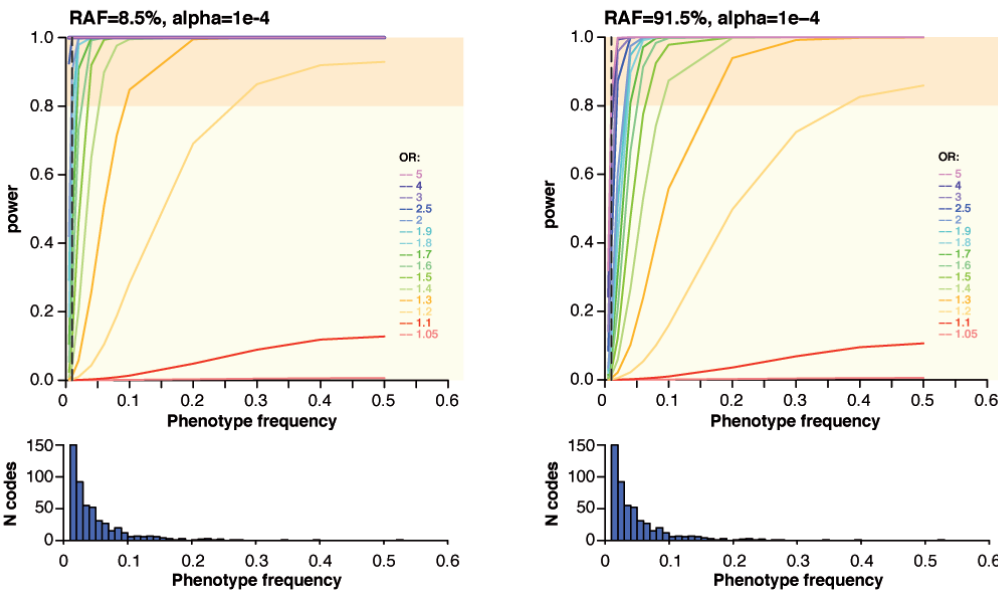


**A i2b2, 3,005 subjects**



**B BioVU, 20,227 subjects**



**S5 Fig. Estimation of power to detect an association at rs12720356 in the EMR.** We estimated the power to detect an association at  $P < 1 \times 10^{-4}$  for a variant with MAF = 8.5%, based on phenotype frequency in the EMR and estimated OR. (A) Power estimations for a sample size of 3,005 subjects. (B) Power estimations for a sample size of 26,372 subjects. The left panel shows results for the minor allele associated with increased risk. The right panel shows results for the minor allele with a protective effect. The dashed red line indicated a phenotype frequency of 1%. The barplots highlight the number of cases per phenotype in the EMR collections.