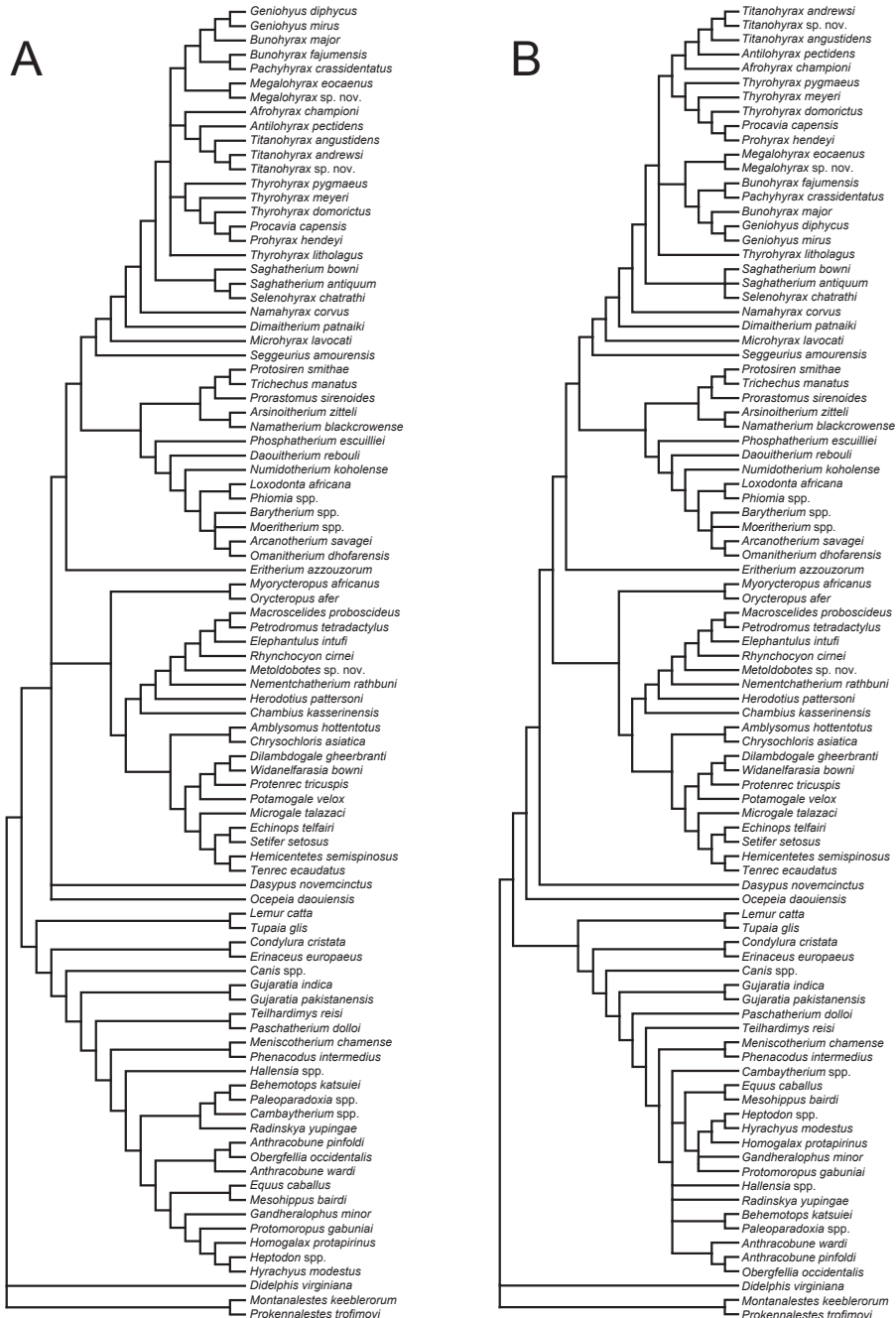


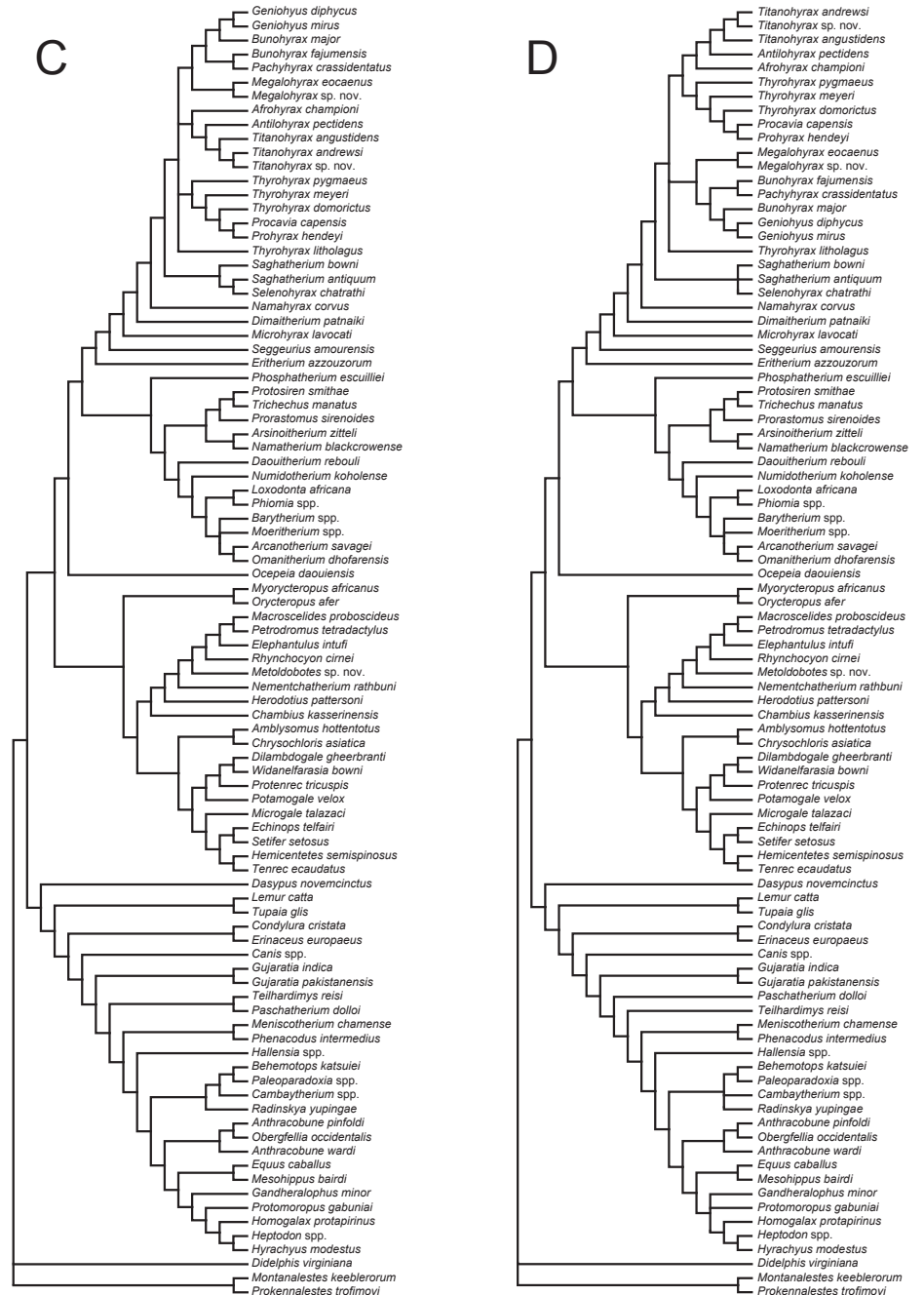
Primary topologies, Atlantogenata constraint



Constraint 1 (A1) with 0.5 weighting of ordered multistates with intermediate states for polymorphisms. Tree length = **3704.5**.

Constraint 1 (A2) with no weighting of ordered multistates with intermediate states for polymorphisms. Tree length = **5758**.

Primary topologies, Exafroplacentalia constraint



Constraint 2 (E1) with 0.5 weighting of ordered multistates with intermediate states for polymorphisms. Tree length = **3716**.

Constraint 2 (E2) with no weighting of ordered multistates with intermediate states for polymorphisms. Tree length = **5773**.