

Figure S6-1, sample: 4343211598_R02C02, Internal ID:5.1, COLOMBIA, case, chr2:51107671-51108957

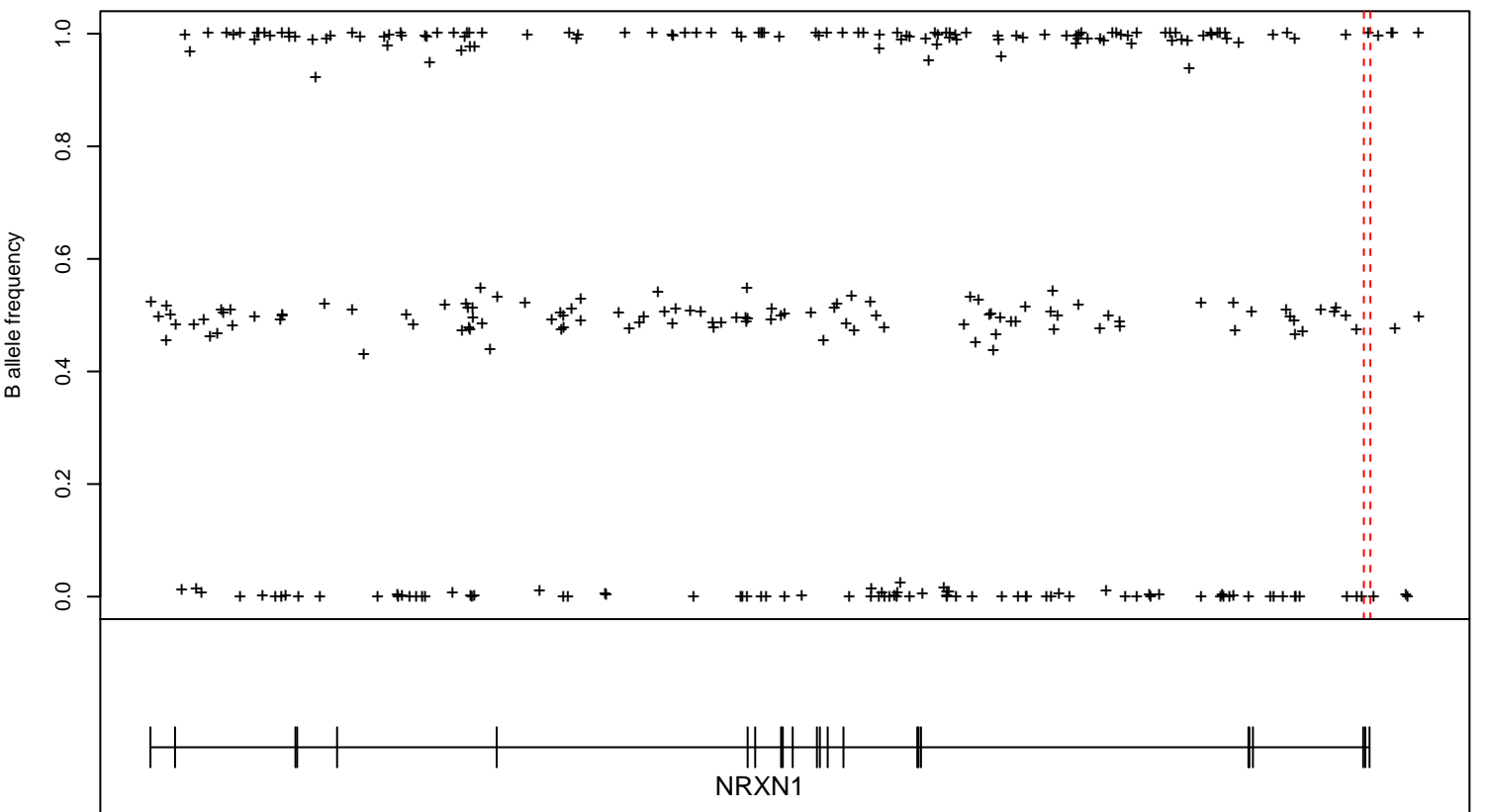
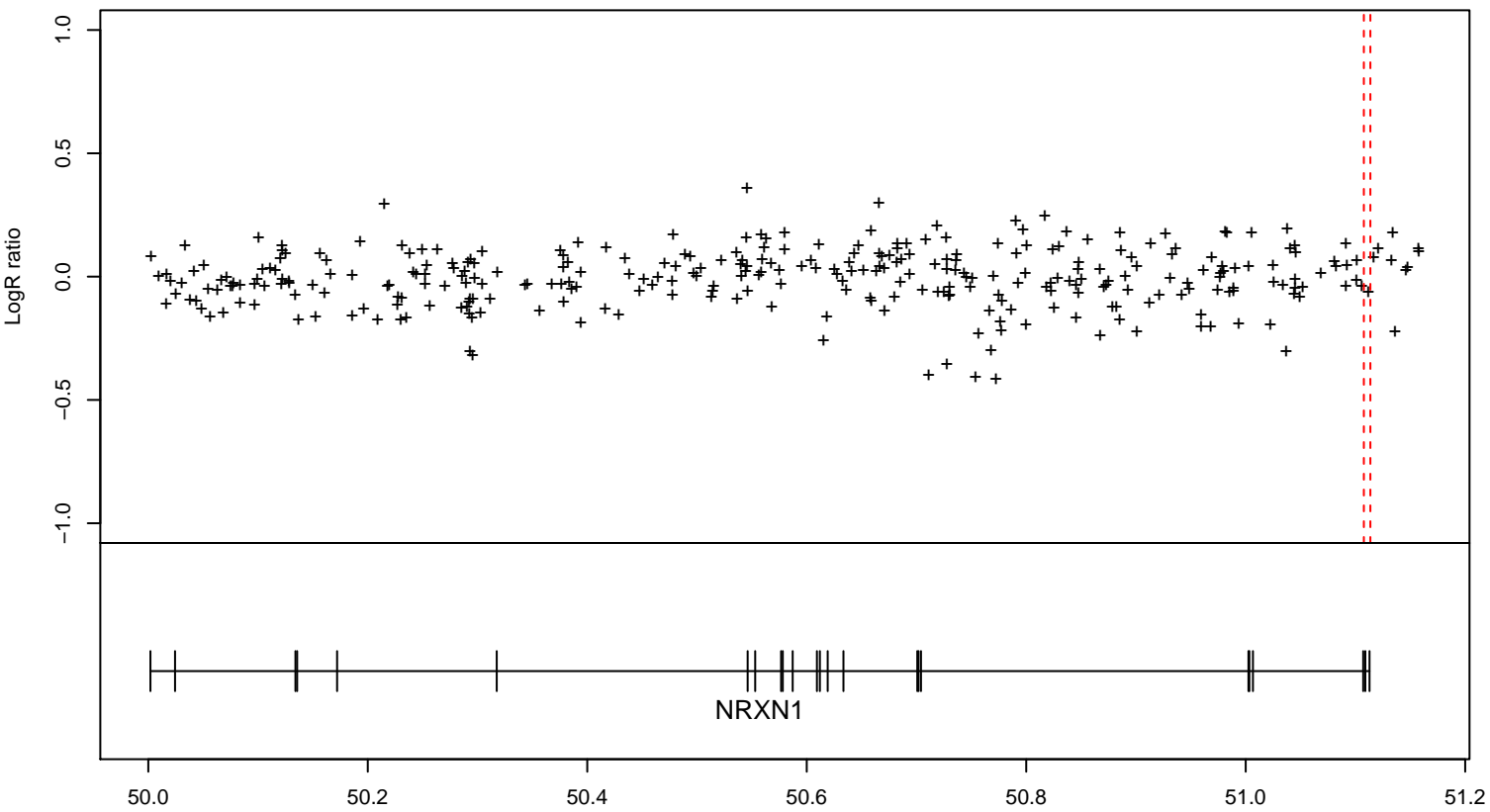


Figure S6-2, sample: 4506287023_R01C02, Internal ID:34.1, COLOMBIA, case, chr2:51113610-51113610

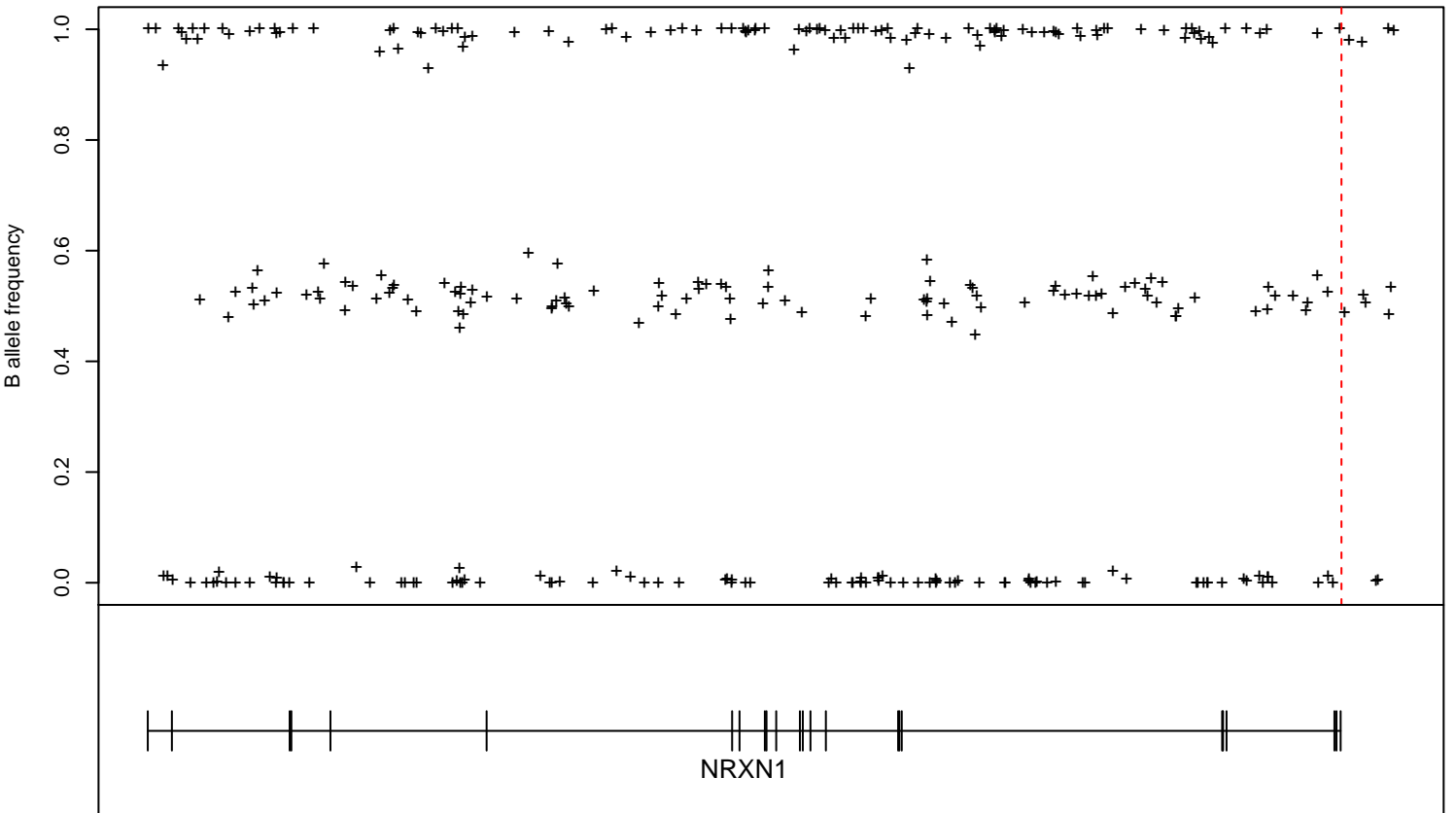
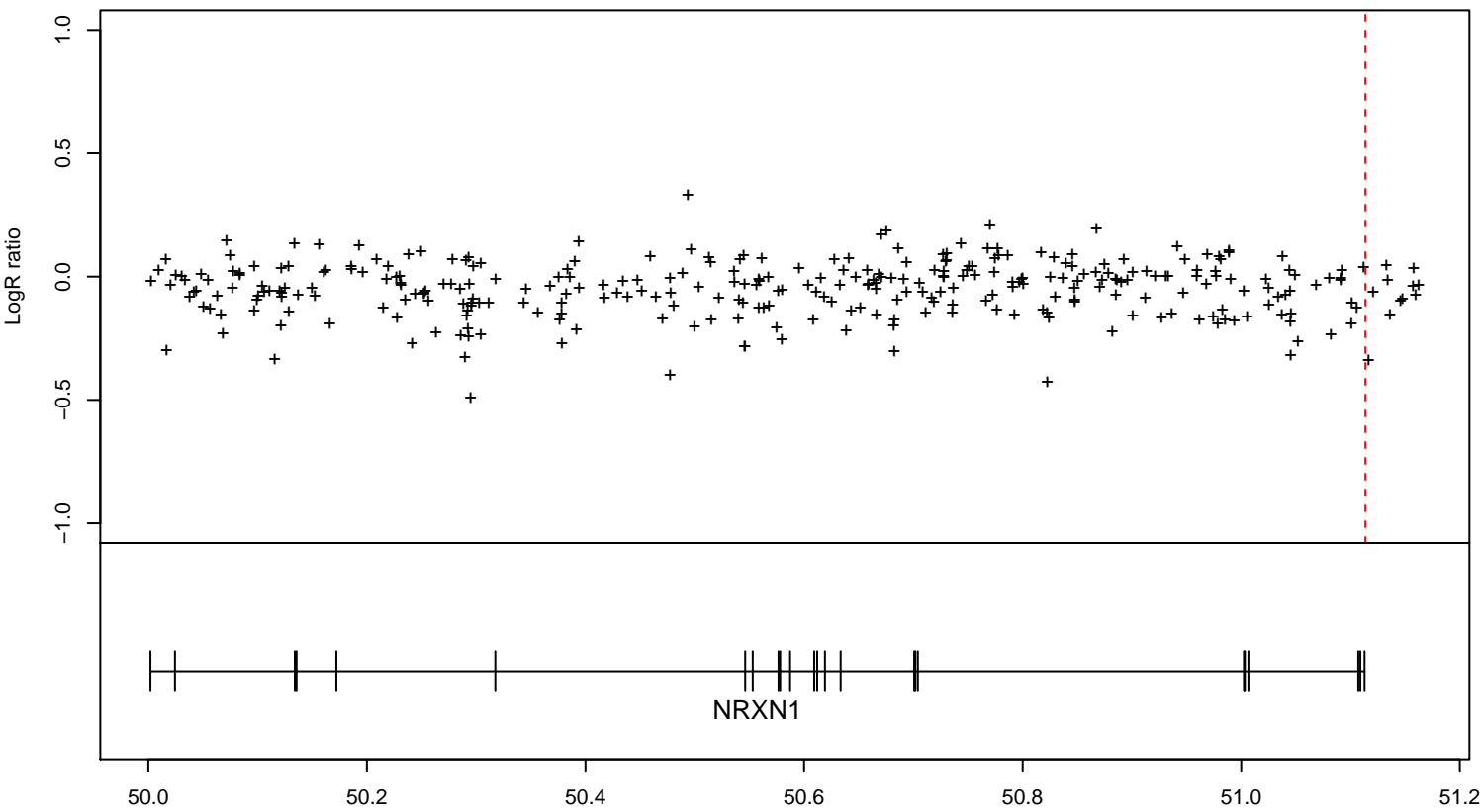


Figure S6-3, sample: 4506279157_R02C02, Internal ID:29.1, COLOMBIA, case, chr3:100877172-100877172

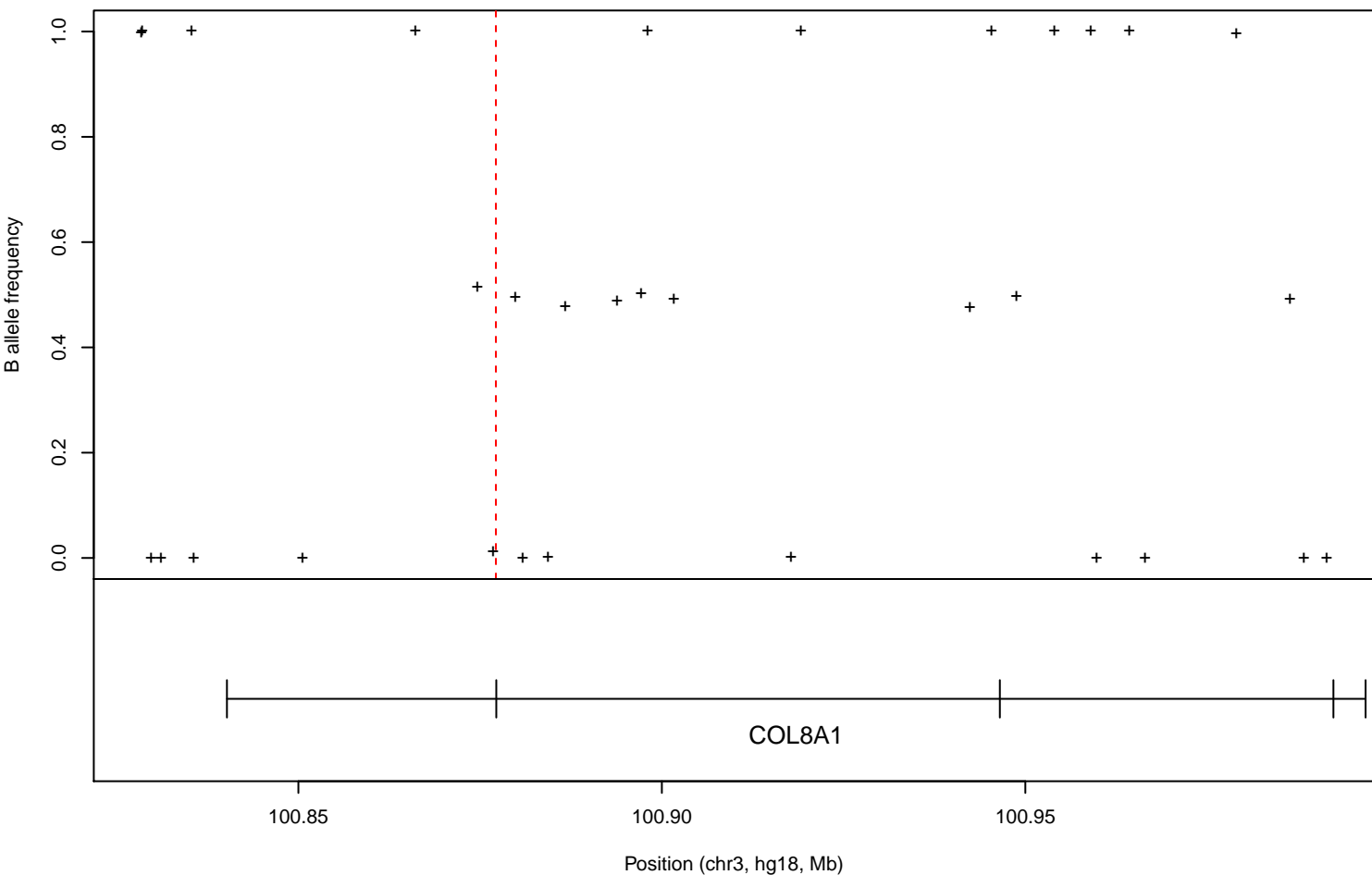
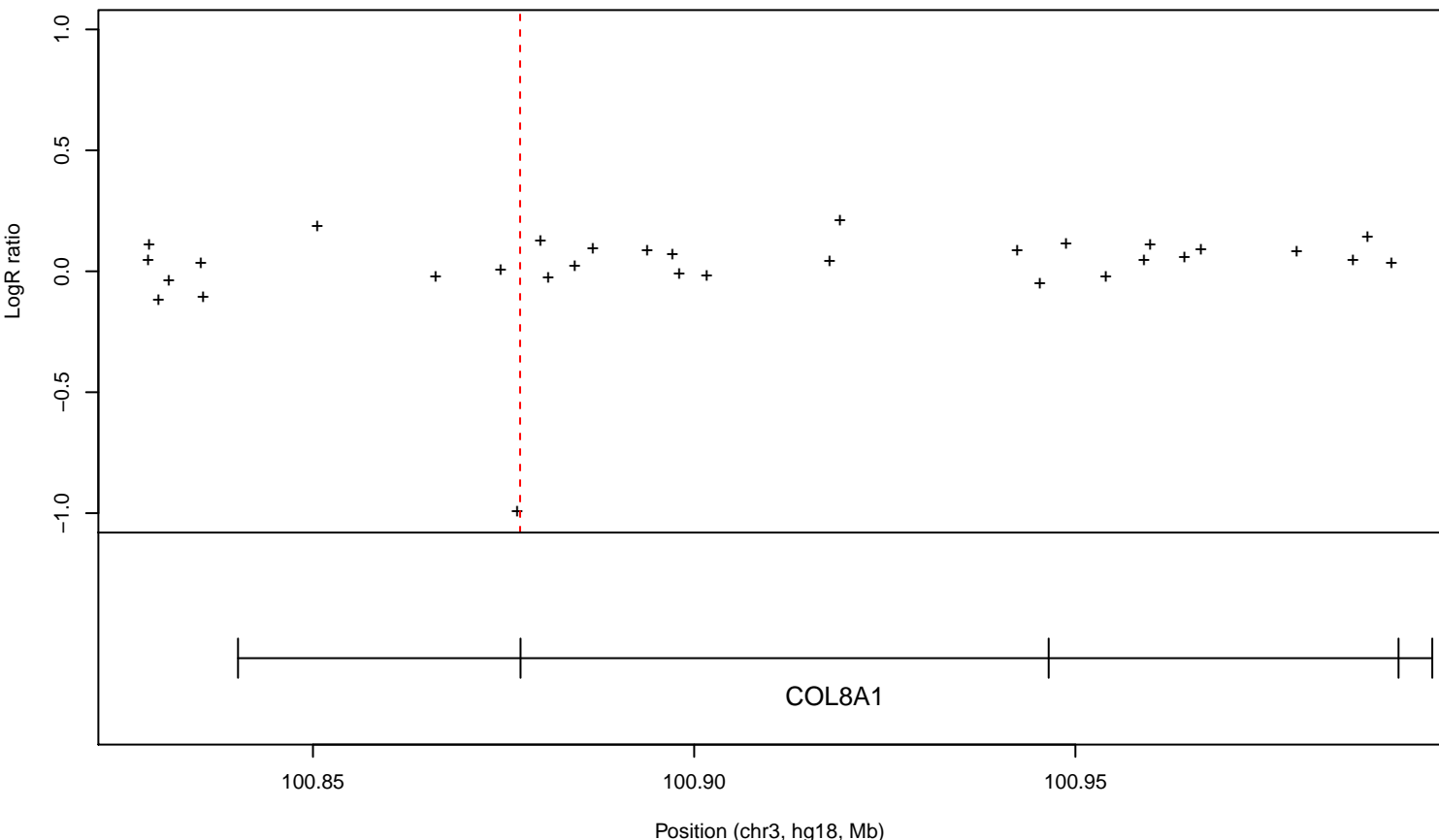


Figure S6-4, sample: 4506287081_R02C02, Internal ID:114.1, COLOMBIA, case, chr3:100877172-100877172

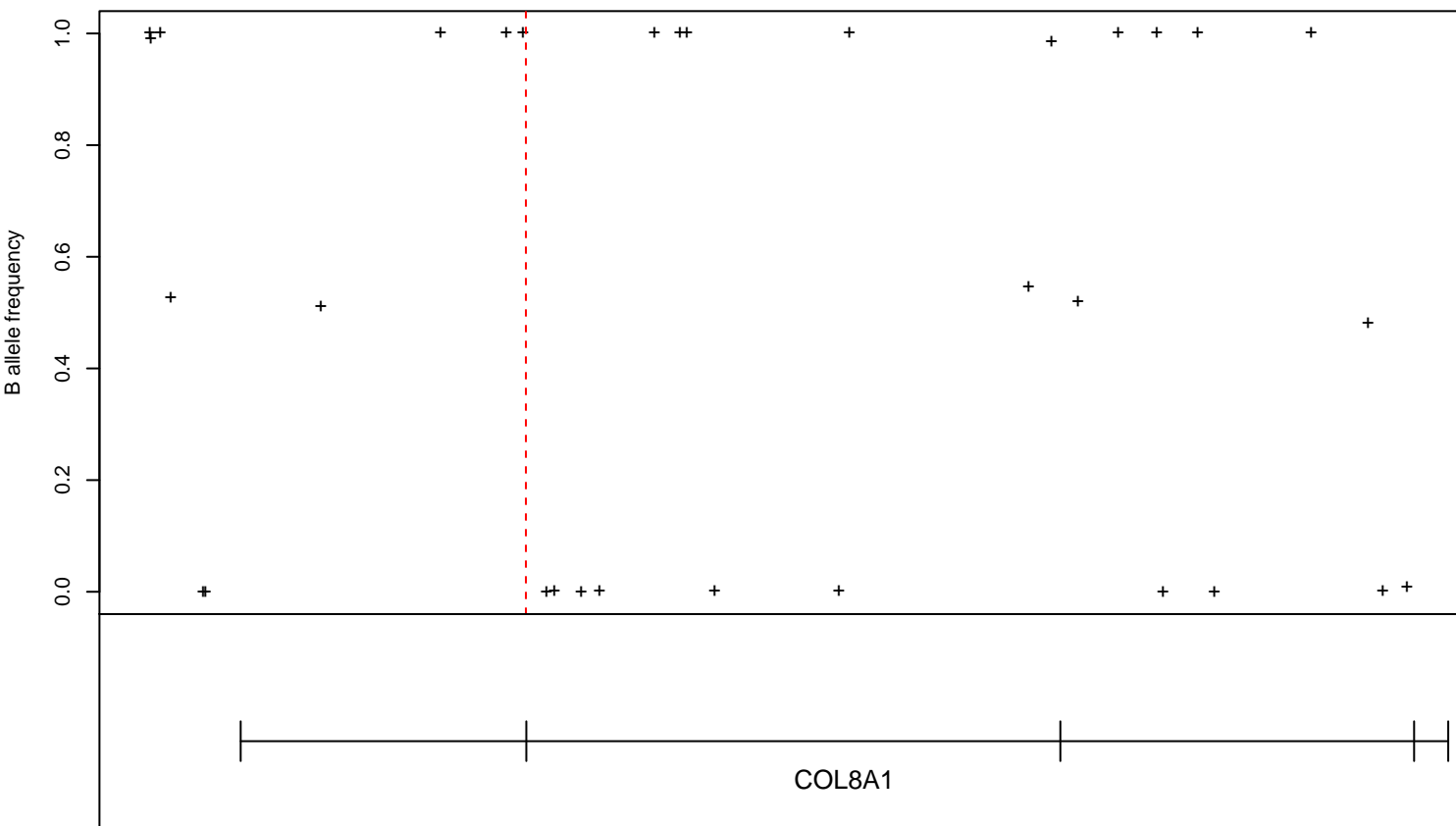
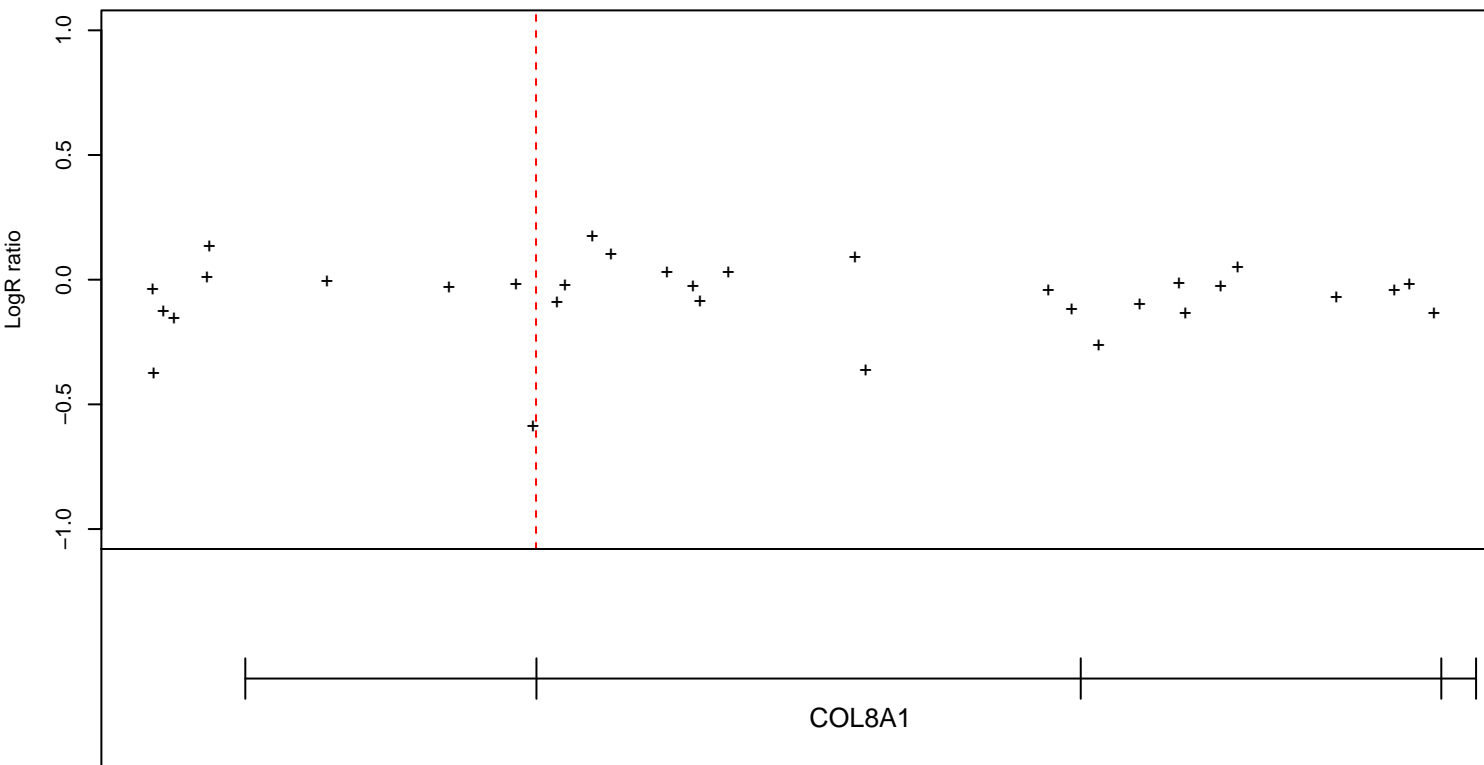
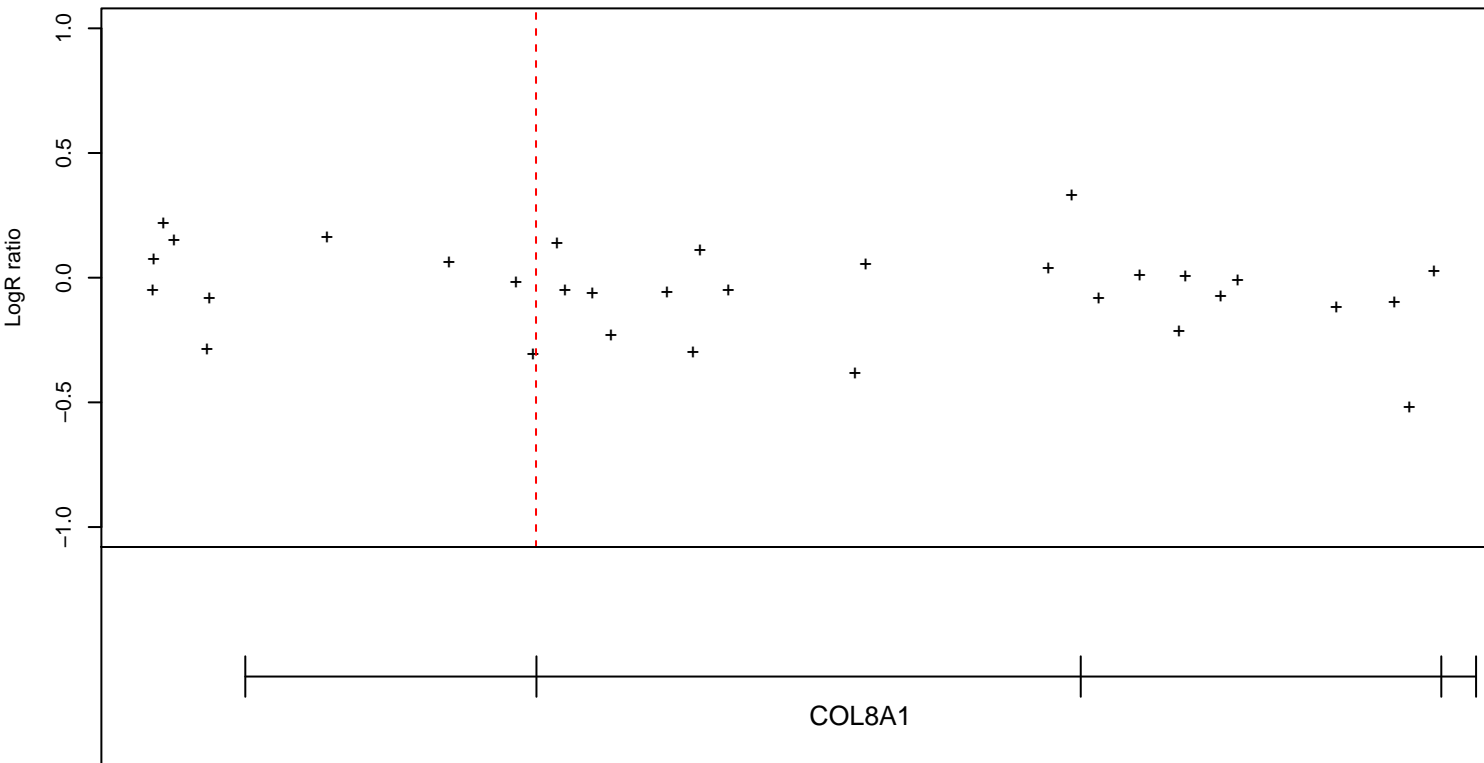


Figure S6-5, sample: 4393489021_R01C01, Internal ID:7.1, COLOMBIA, case, chr3:100877172-100877172

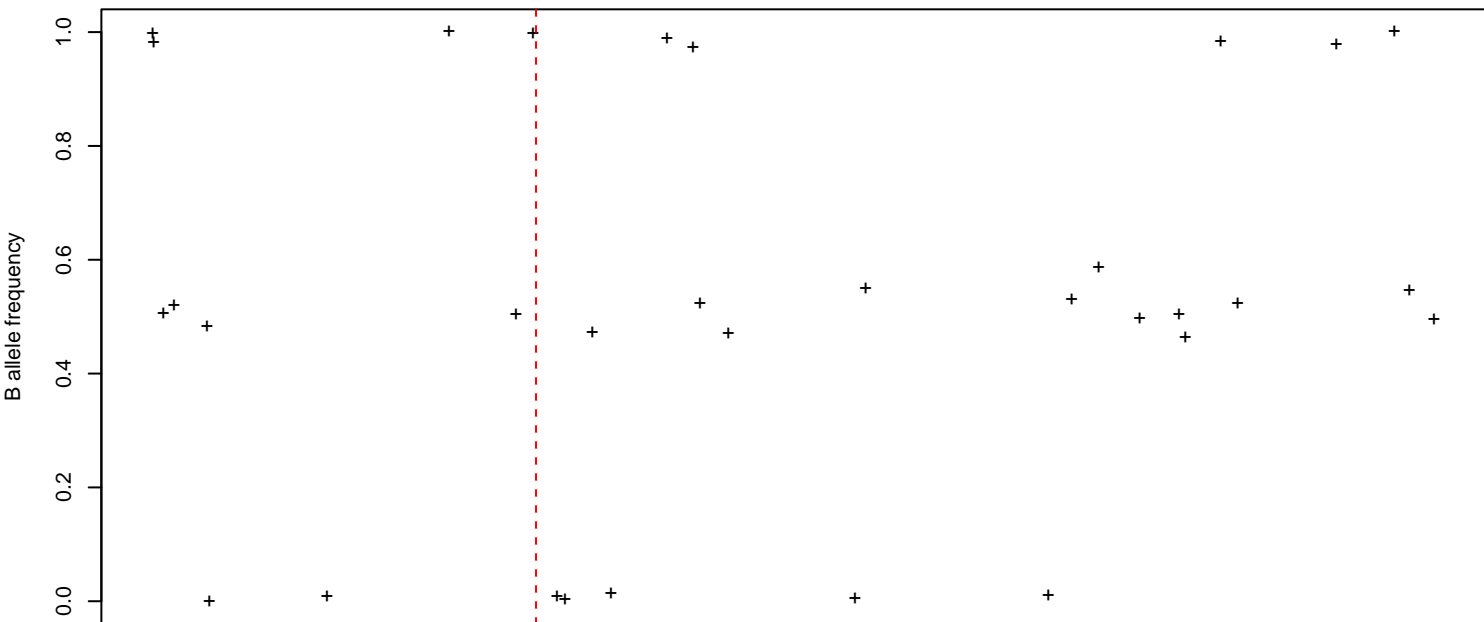


100.85

100.90

100.95

Position (chr3, hg18, Mb)



100.85

100.90

100.95

Position (chr3, hg18, Mb)