

Figure S2. Forest plots for immune response to vaccination question

Figure S2.1. Forest plot of studies of seroconversion (≥ 4 fold rise in HI titre): seasonal influenza A/H1N1, vaccinated immunocompromised patients versus vaccinated immunocompetent controls

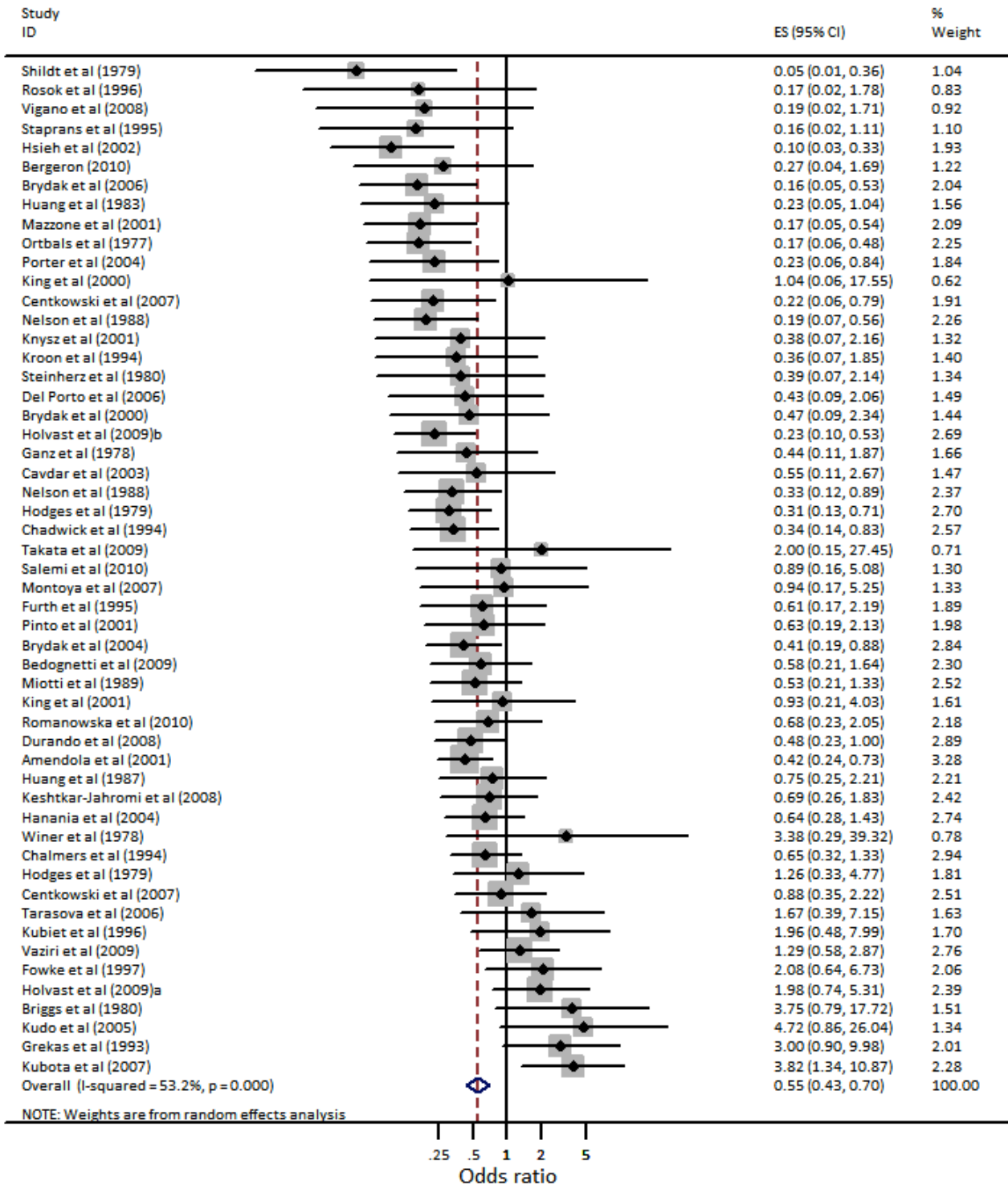


Figure S2.2. Forest plot of studies of seroconversion (≥ 4 fold rise in HI titre): influenza A/H3N2, vaccinated immunocompromised patients versus vaccinated immunocompetent controls

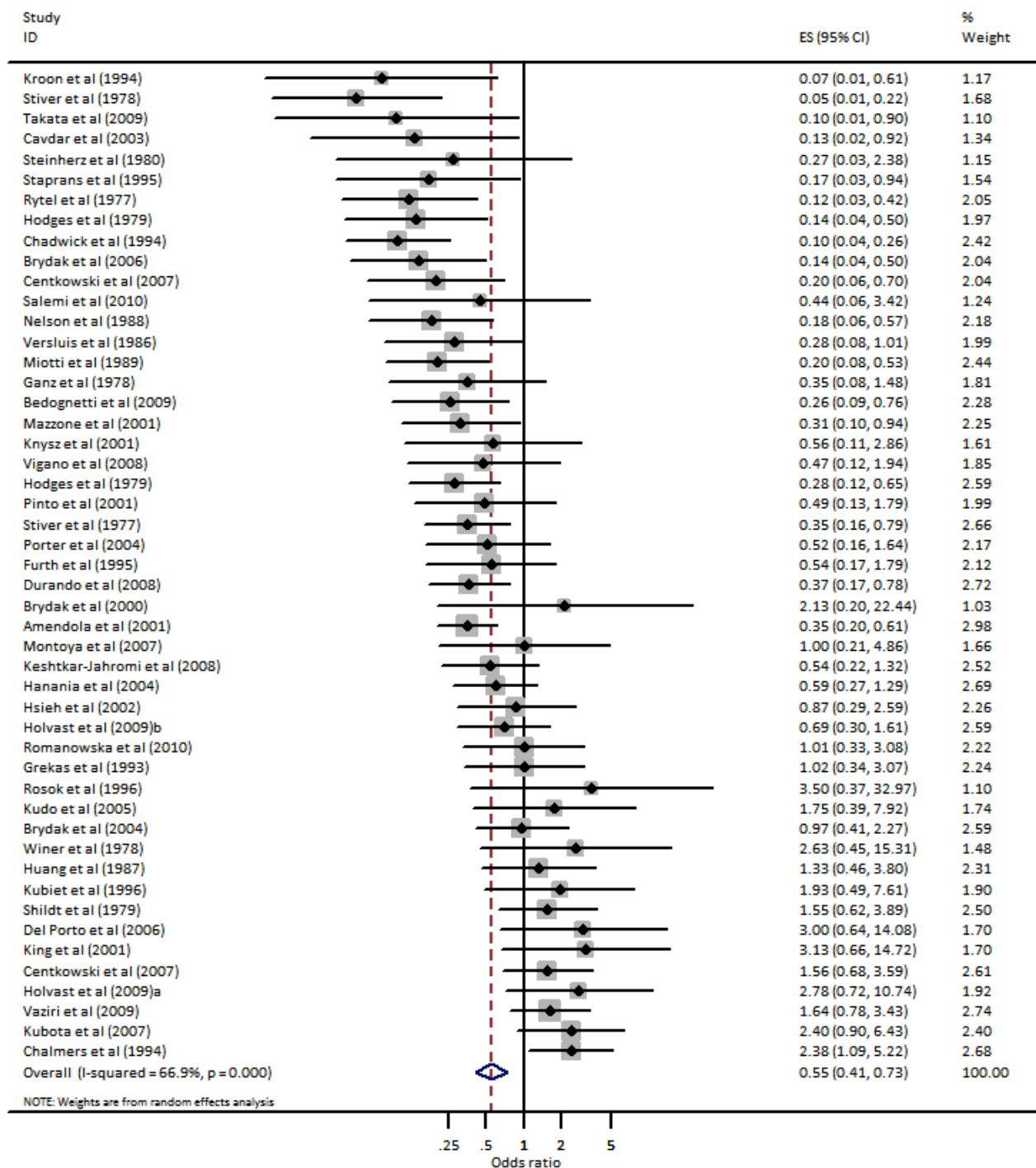


Figure AS2.3. Forest plot of studies of seroconversion (≥ 4 fold rise in HI titre): seasonal influenza B, vaccinated immunocompromised patients versus vaccinated immunocompetent controls

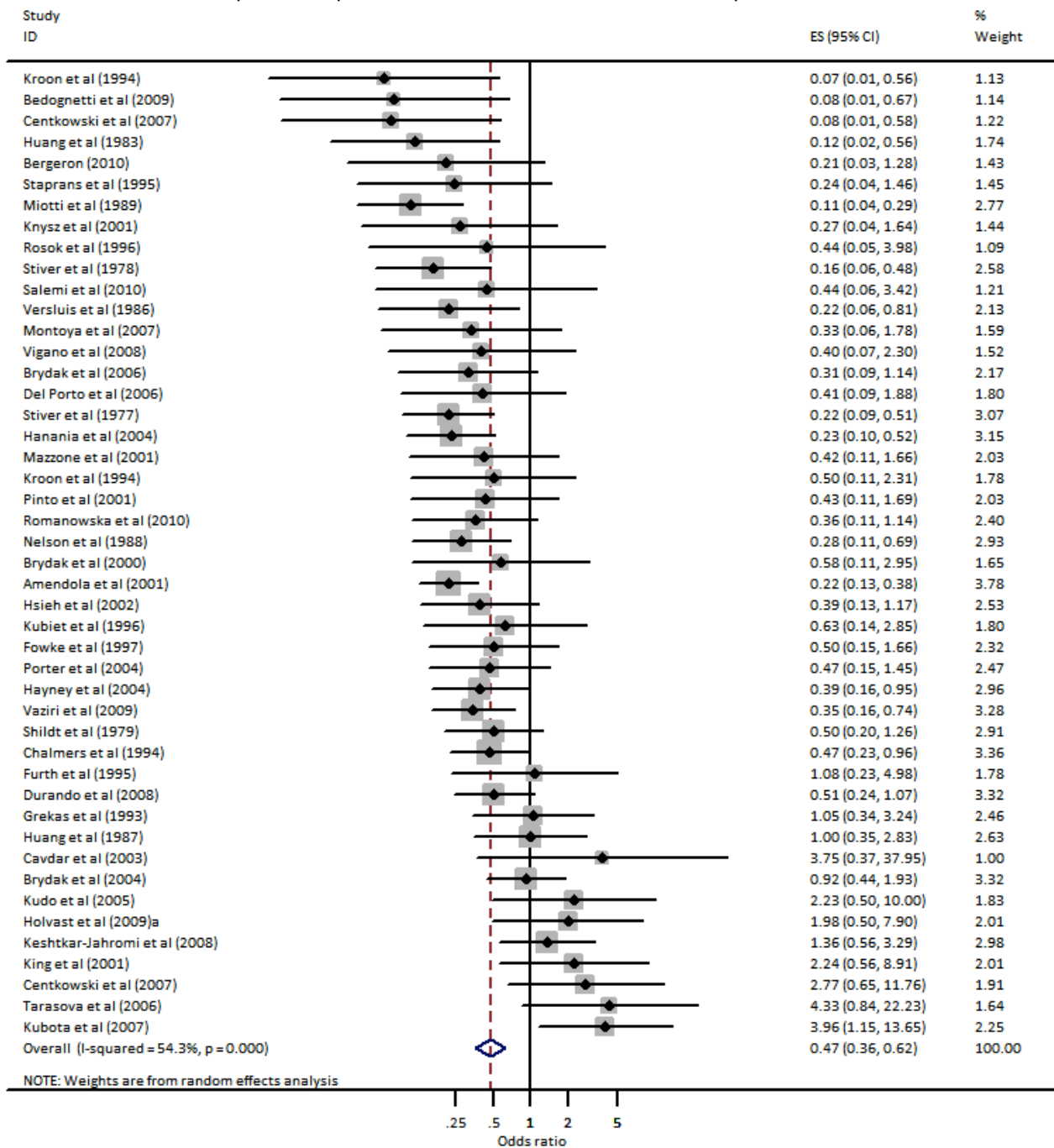


Figure AS2.4. Forest plot of studies of seroconversion (≥ 4 fold rise in HI titre): seasonal influenza A/H1N1, vaccinated immunocompromised patients versus placebo or no vaccination

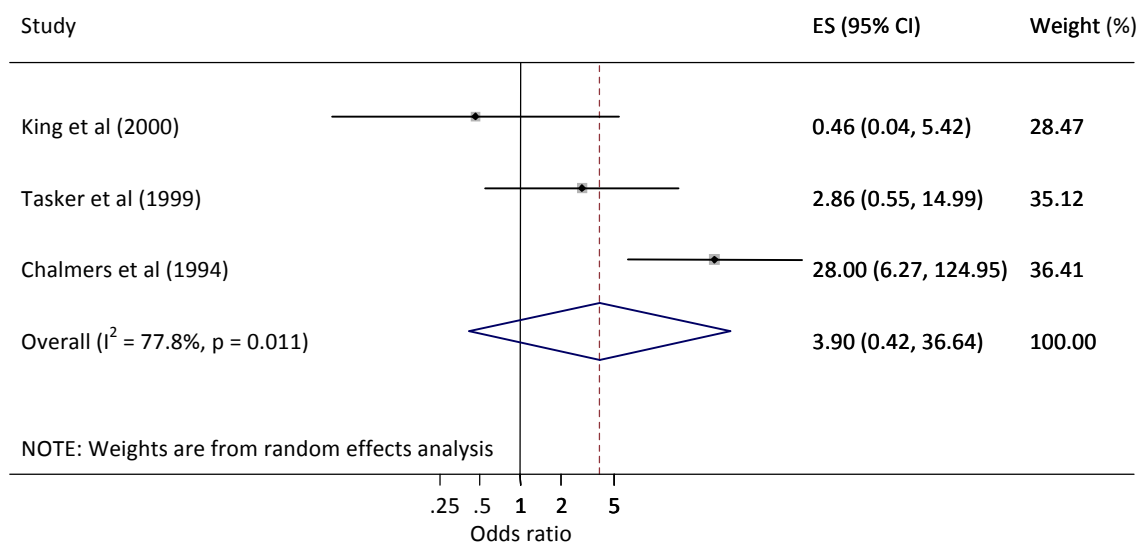


Figure S2.5. Forest plot of studies of seroconversion (≥ 4 fold rise in HI titre): influenza A/H3N2, vaccinated immunocompromised patients versus placebo or no vaccination

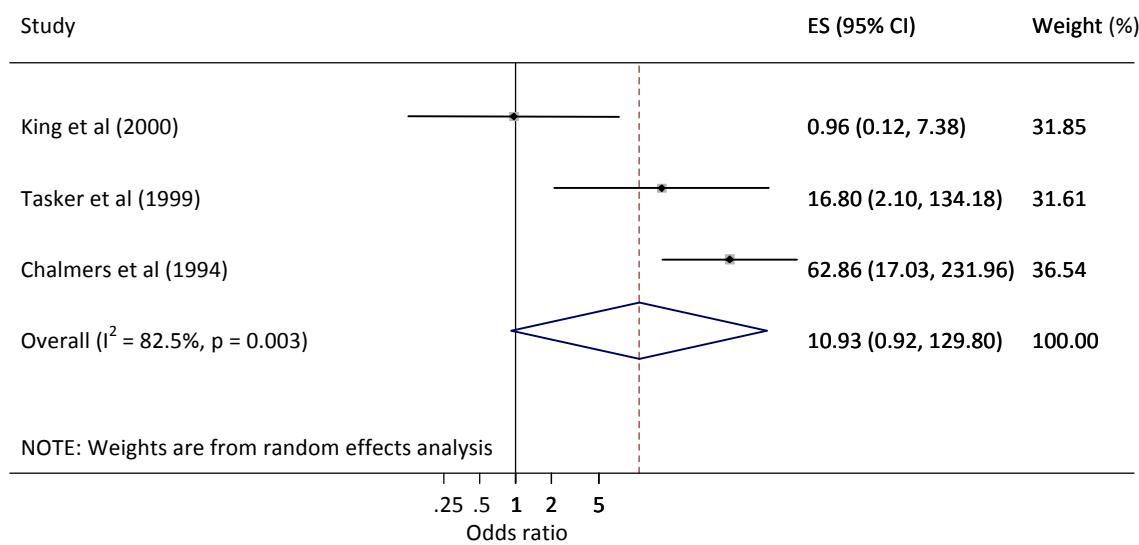


Figure S2.6. Forest plot of studies of seroconversion (≥ 4 fold rise in HI titre): influenza B, vaccinated immunocompromised patients versus placebo or no vaccination

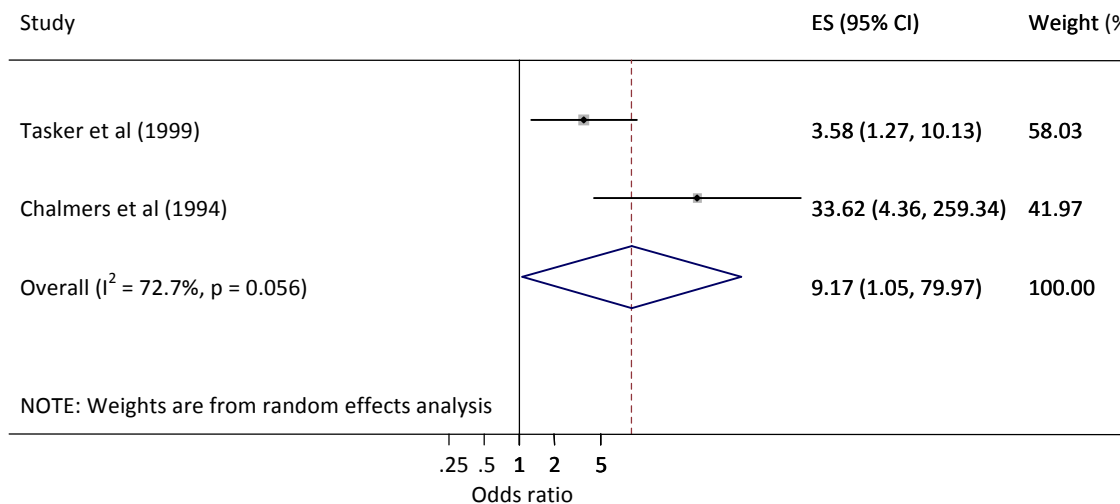


Figure S2.7. Forest plot of studies of seroconversion ($< 1:40$ pre-vaccination to $\geq 1:40$ HI titre post vaccination): seasonal influenza A/H1N1, vaccinated immunocompromised patients versus vaccinated immunocompetent controls

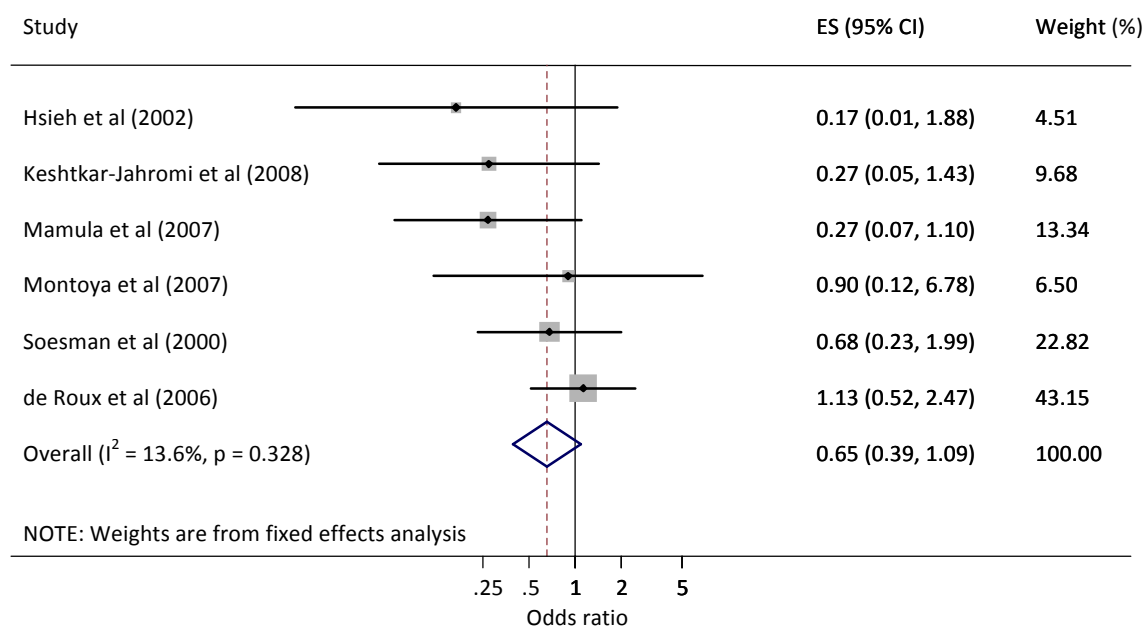


Figure S2.8. Forest plot of studies of seroconversion (<1:40 pre-vaccination to ≥1:40 HI titre post vaccination): influenza A/H3N2, vaccinated immunocompromised patients versus vaccinated immunocompetent controls

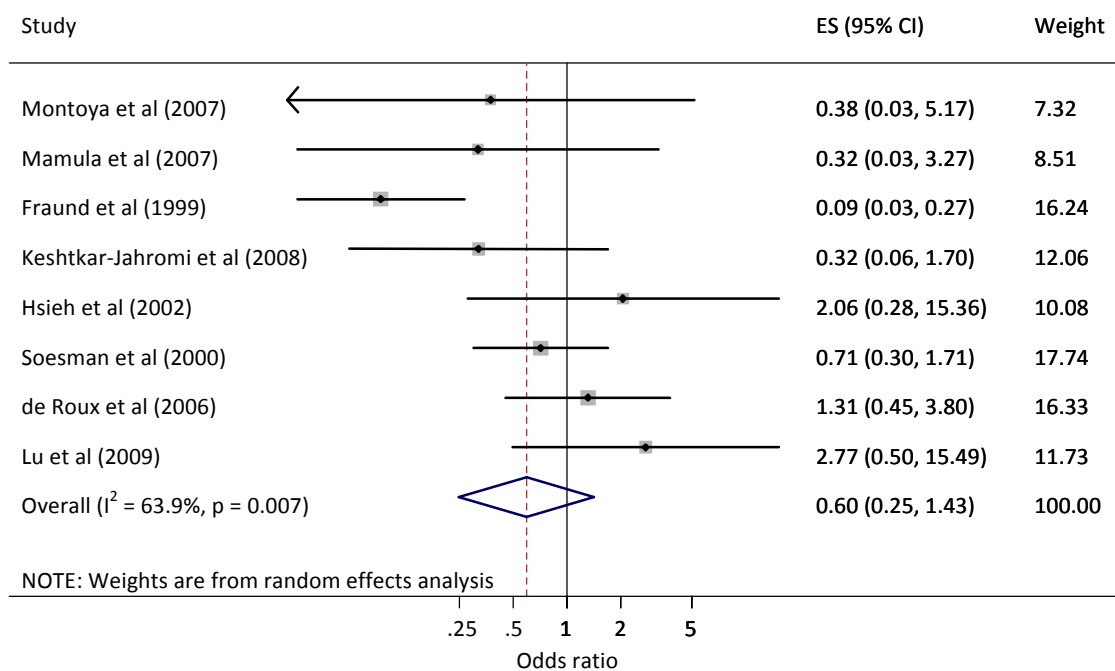


Figure S2.9. Forest plot of studies of seroconversion (<1:40 pre-vaccination to ≥1:40 HI titre post vaccination): seasonal influenza B, vaccinated immunocompromised patients versus vaccinated immunocompetent controls

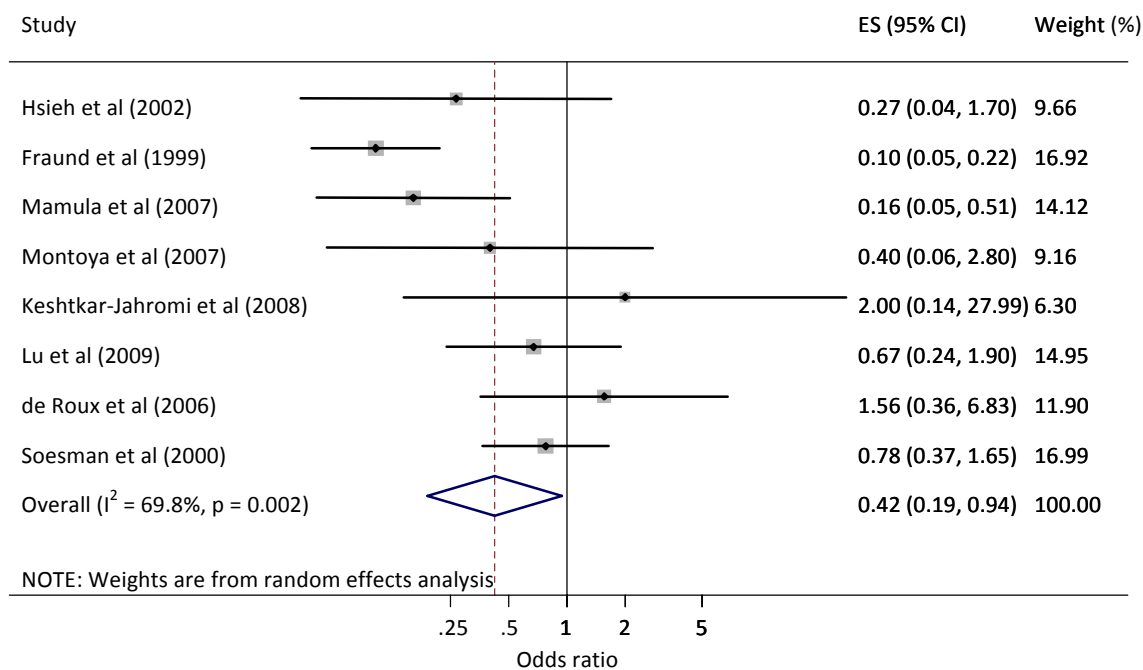


Figure S2.10. Forest plot of studies of seroprotection ($\geq 1:40$ HI titre post vaccination): seasonal influenza A/H1N1, vaccinated immunocompromised patients versus vaccinated immunocompetent controls

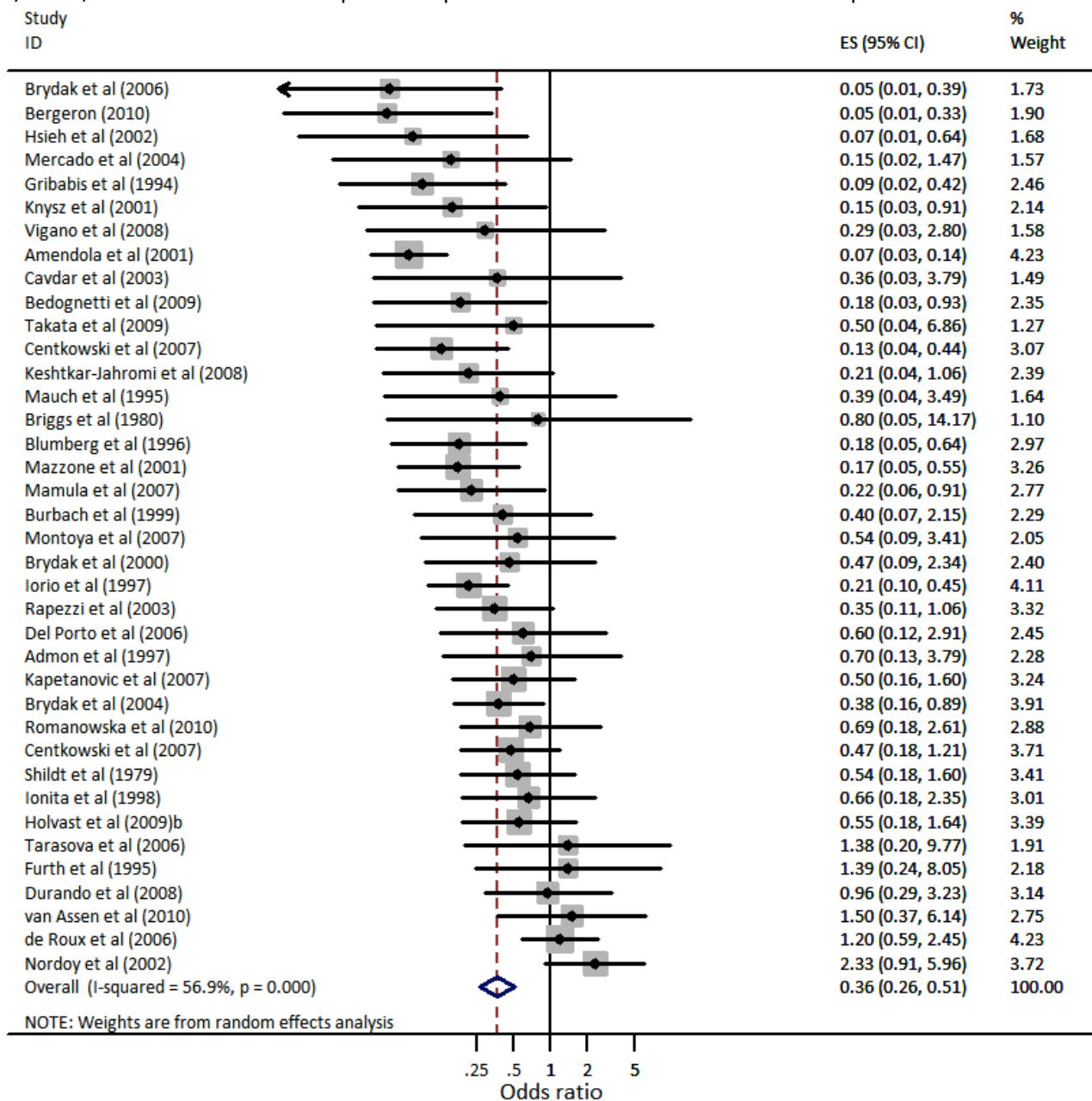


Figure S2.11. Forest plot of studies of seroprotection ($\geq 1:40$ HI titre post vaccination): influenza A/H3N2, vaccinated immunocompromised patients versus vaccinated immunocompetent controls

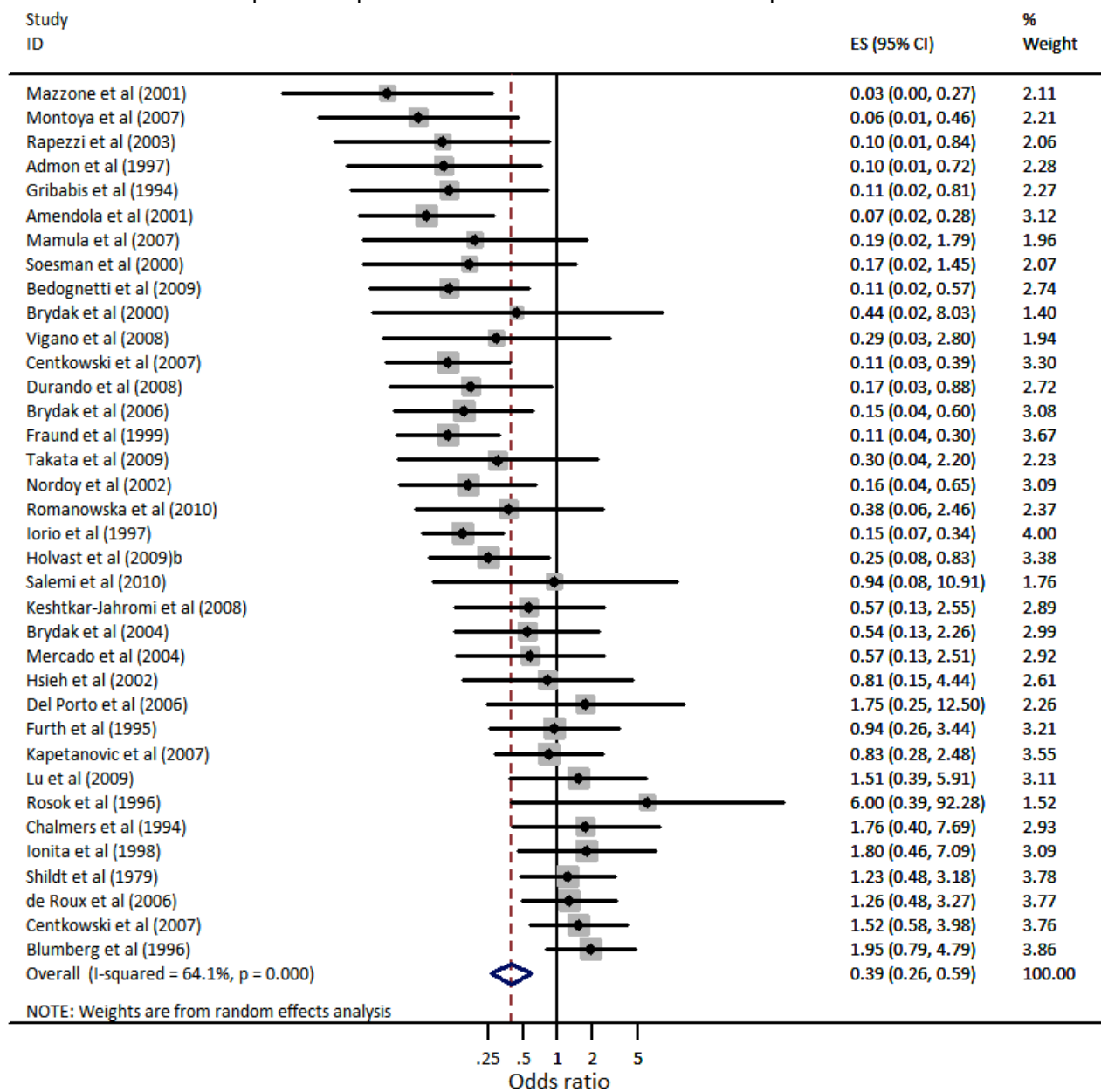


Figure S2.12. Forest plot of studies of seroprotection ($\geq 1:40$ HI titre post vaccination): seasonal influenza B, vaccinated immunocompromised patients versus vaccinated immunocompetent controls

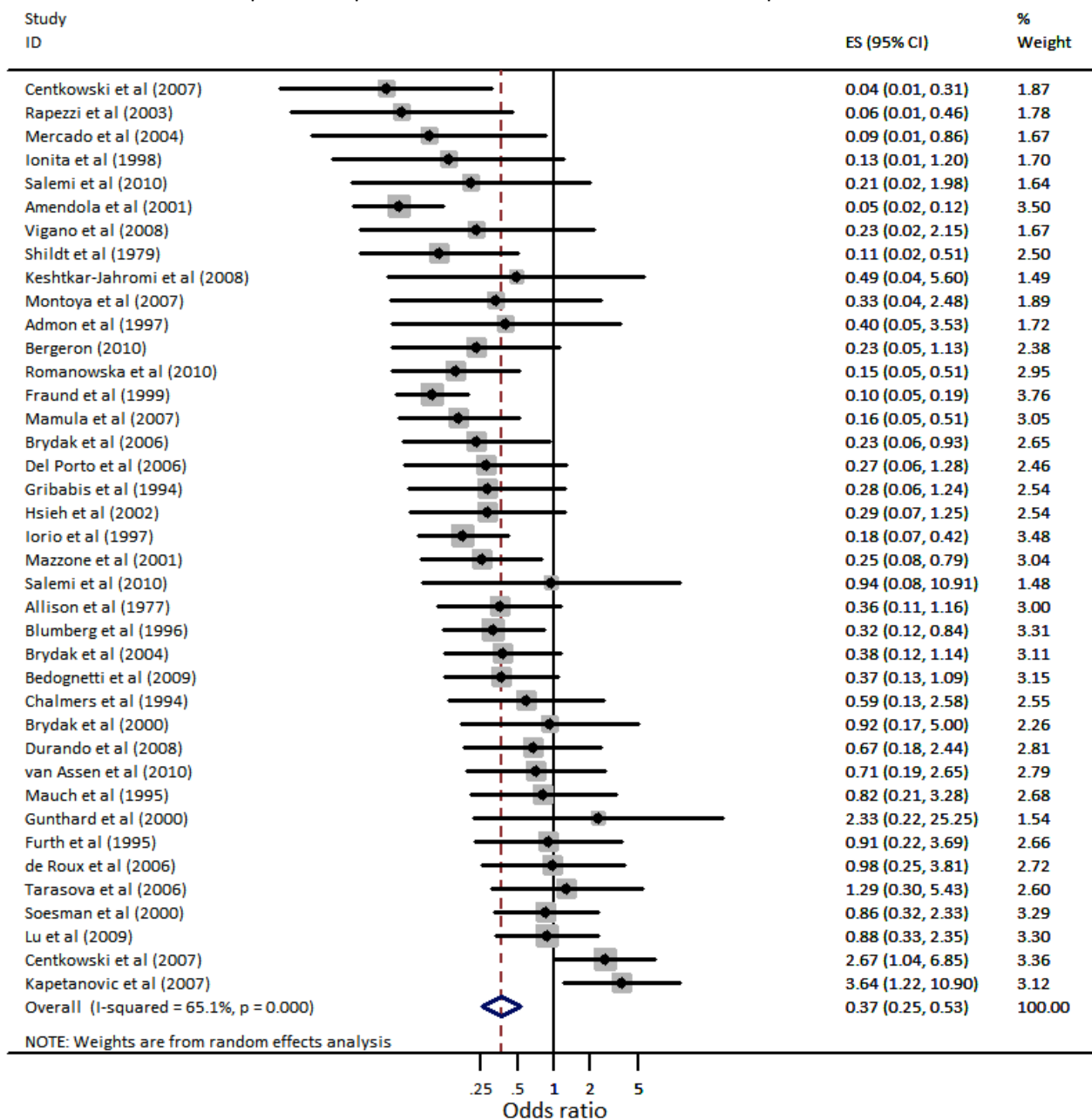


Figure S2.13. Forest plot of studies of seroprotection ($\geq 1:40$ HI titre post vaccination): pandemic influenza A/H1N1, vaccinated immunocompromised patients versus vaccinated immunocompetent controls

