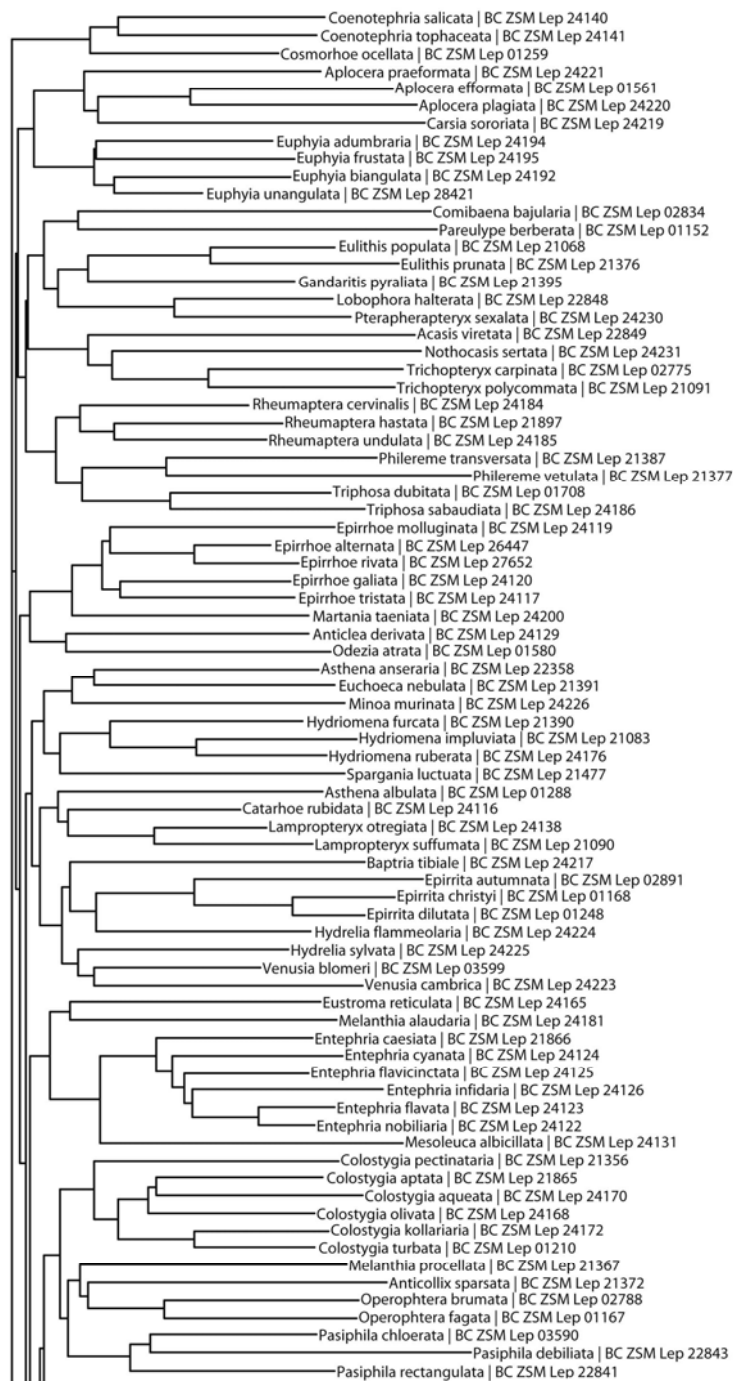
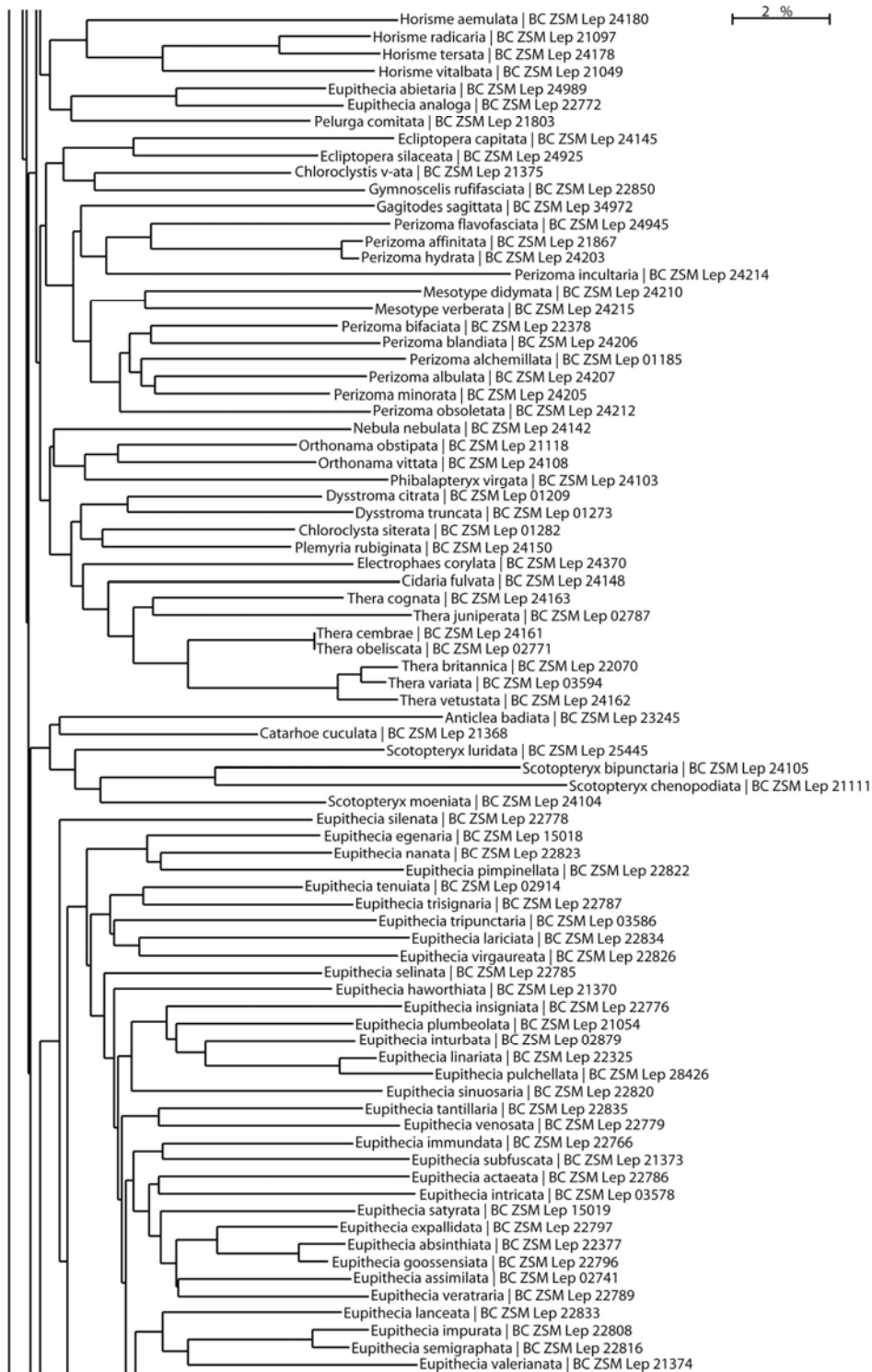
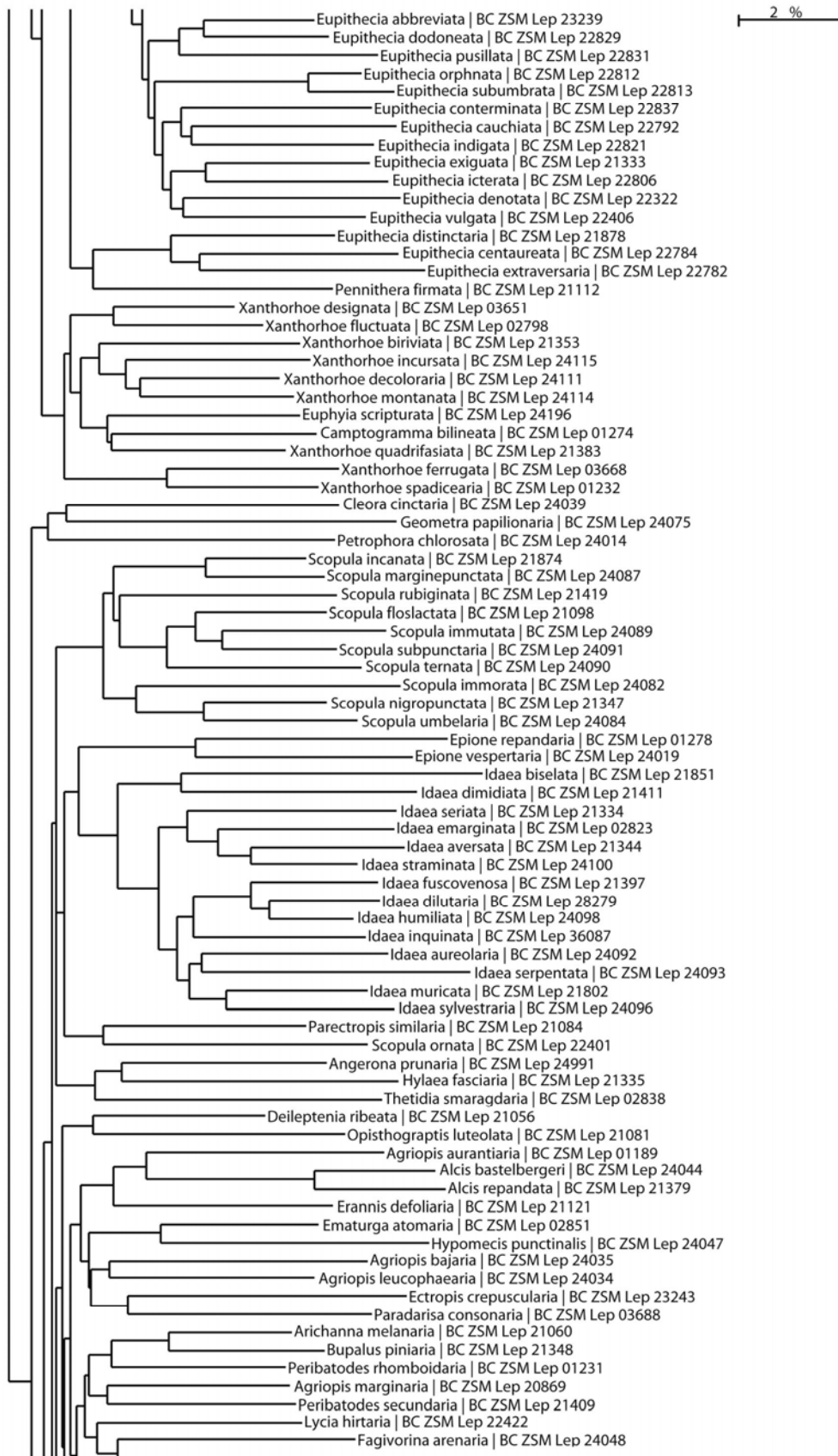


## Appendix S2: Neighbour joining tree of Bavarian geometrids - exemplary data

Neighbour joining tree (Kimura 2 Parameter) for selected vouchers of Bavarian geometrids, one specimen per species selected (full-fragment analysis with a few additional sequences > 600 bp; with species name and specimen ID in BOLD), including 317 species from the territory of Bavaria; 'species' with deep divergences are represented by one arbitrarily chosen lineage only.







2 %

