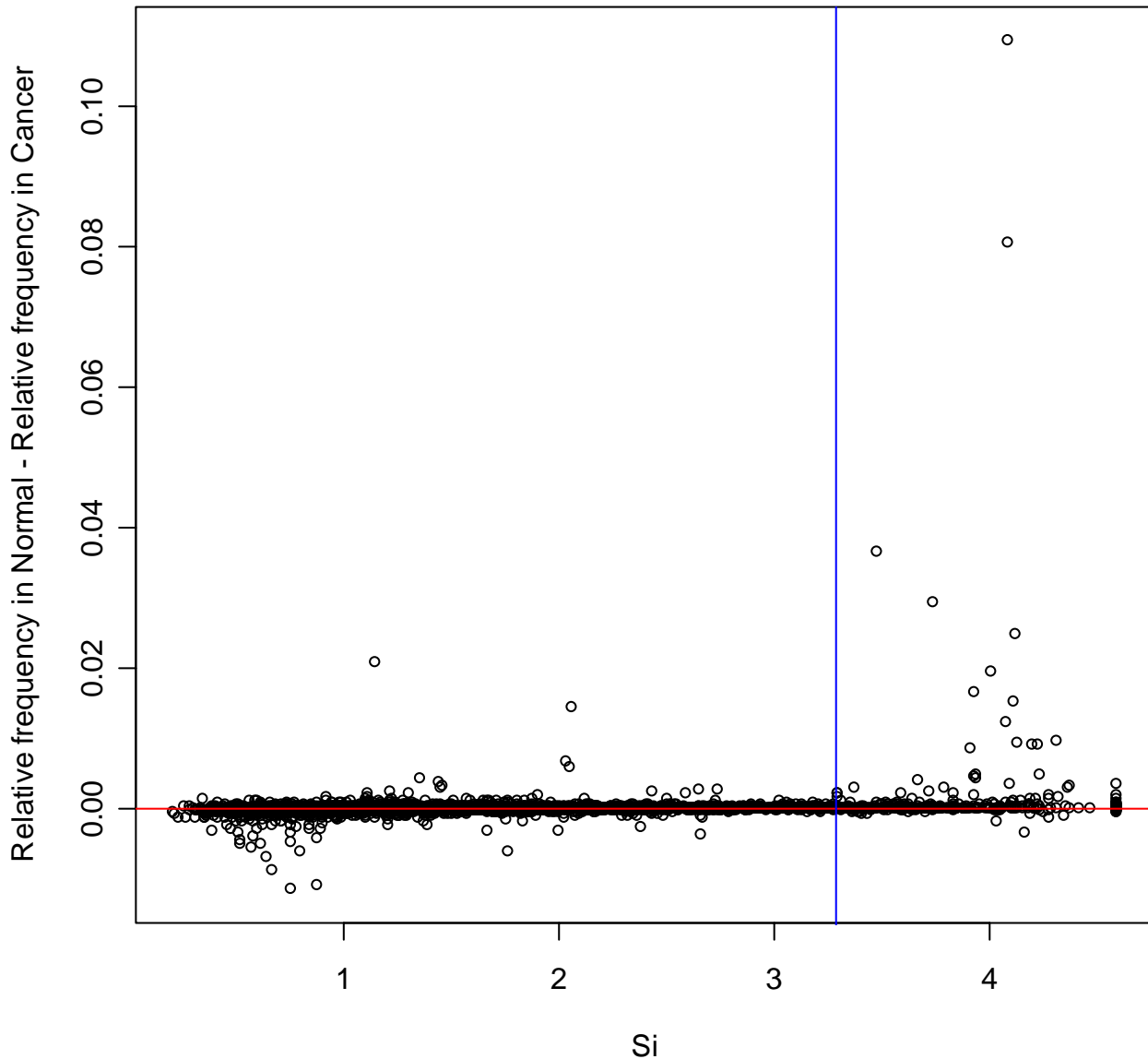


**7.37% overexpressed in Normal, mean $S_i=2.24$
19.65% overexpressed in Cancer, mean $S_i=1.8$**



Organ: Liver . P-value for differences in mean S_i 's = $4.175e-48$

Figure S11. Example of scatter plot for the differences in expression in Dataset A (Human dataset). Relative frequency in Normal – Relative frequency in Cancer = $p_{ij} - p_{ik}$ versus values of gene specificities (S_i). The percentages of genes over-expressed in each condition and the corresponding mean values of these gene specificities are presented in the title. The organ and p-value for the tests of the differences between the gene specificities in each case are presented in the subtitle. Points above the red line are over-expressed in normal tissues; points below the red line are over-expressed in cancer. The blue line points to the mean of gene specificities.