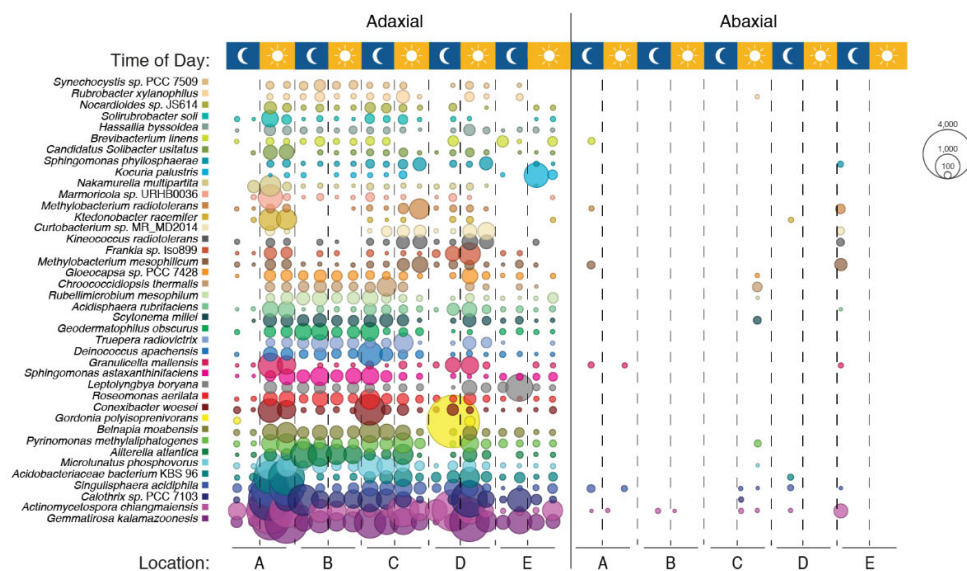
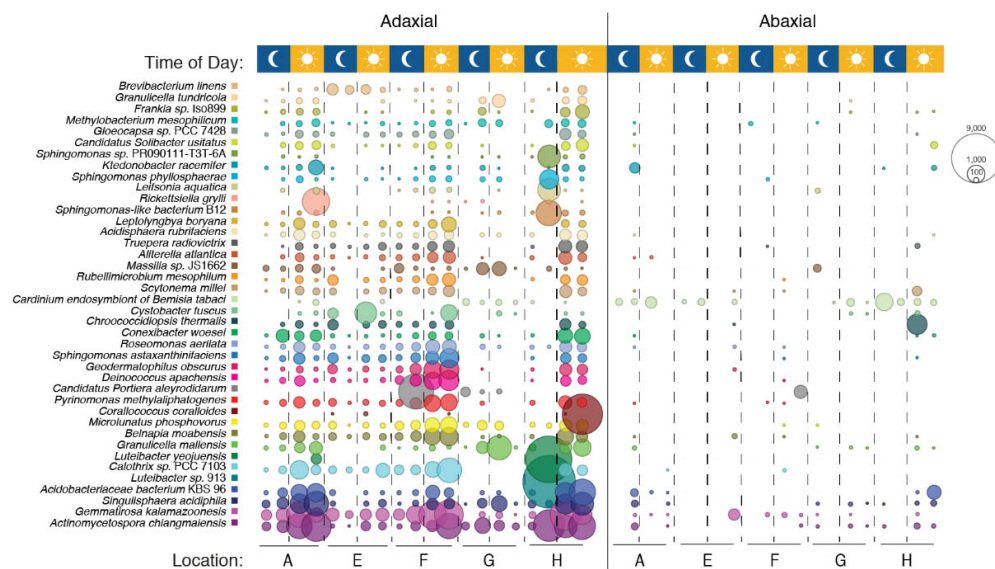


**Fig S3**

**a. *Rhapis excelsa***



**b. *Cordyline fruticosa***



**Top 40 bacterial species on the adaxial and abaxial leaf surface.** The sun and moon symbols represent the time of sampling while letters refer to the sampling sites. Significant reduction in bacterial read counts was observed in both (a) *Rhapis excelsa* and (b) *Cordyline fruticosa* despite the location and time of day.