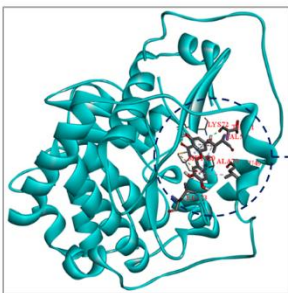
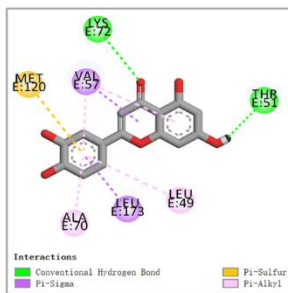


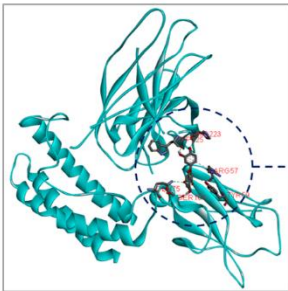
(A1)



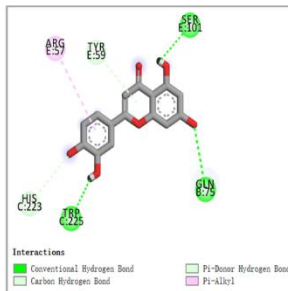
(F1)



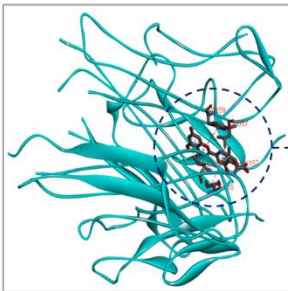
(B1)



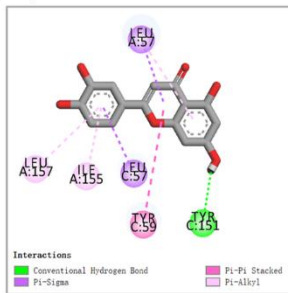
(G1)



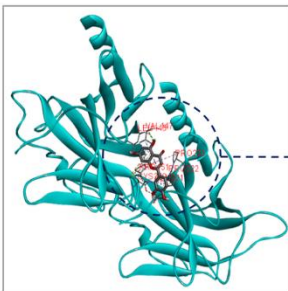
(C1)



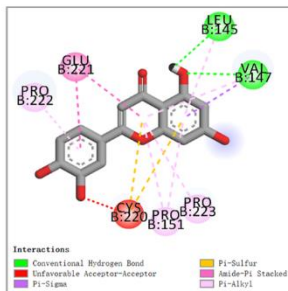
(H1)



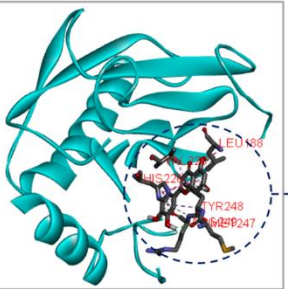
(D1)



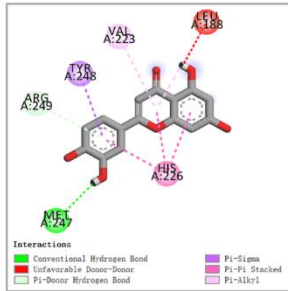
(I1)



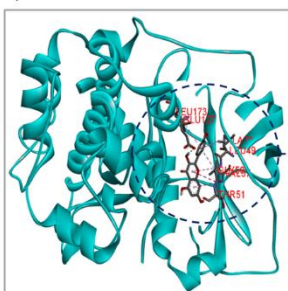
(E1)



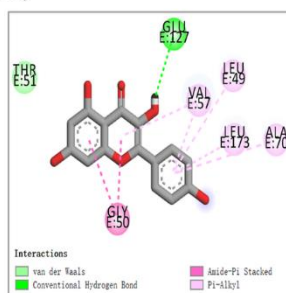
(J1)



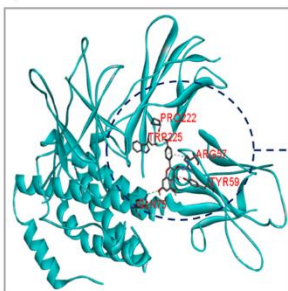
(A2)



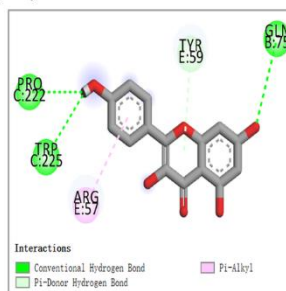
(F2)



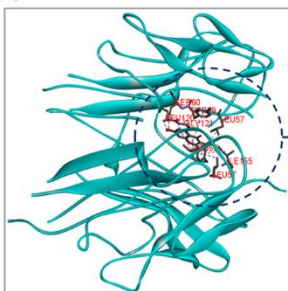
(B2)



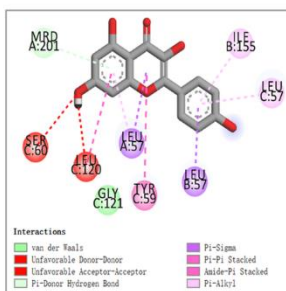
(G2)



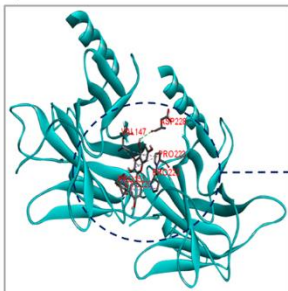
(C2)



(H2)



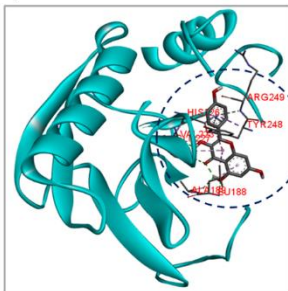
(D2)



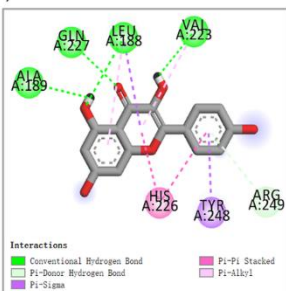
(I2)

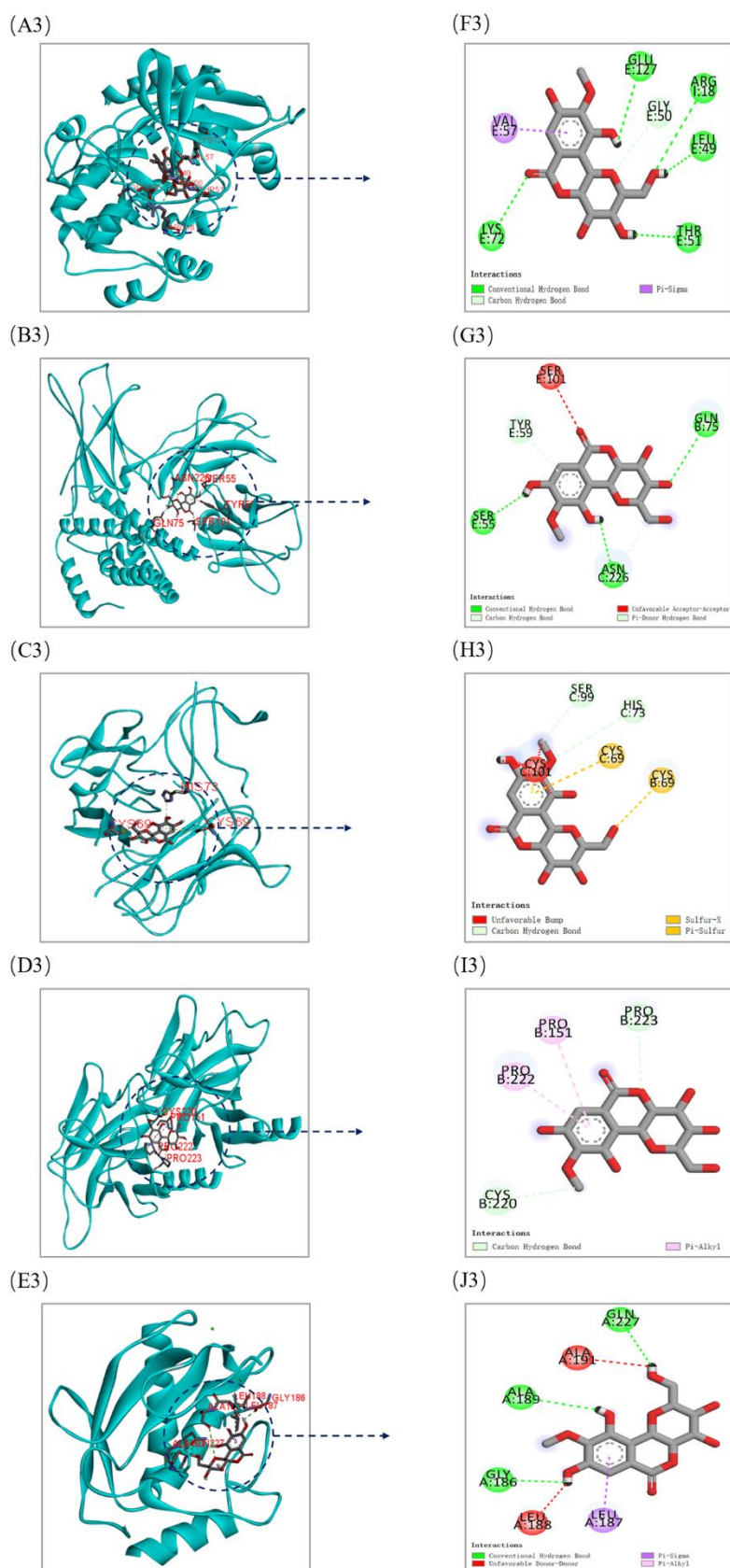


(E2)



(J2)





S2 Fig. Docking results of luteolin, kaempferol and bergenin binding to the five targets. (A1-E1) Luteolin docked with AKT1, IL6, TNF, TP53, MMP9, respectively. (F1-J1) The binding interaction between luteolin and AKT1, IL6, TNF, TP53, MMP9 proteins, respectively. (A2-

E2) Kaempferol docked with AKT1, IL6, TNF, TP53, MMP9, respectively. (F2-J2) The binding interaction between kaempferol and AKT1, IL6, TNF, TP53, MMP9 proteins, respectively. (A3-E3) Bergenin docked with AKT1, IL6, TNF, TP53, MMP9, respectively. (F3-J3) The binding interaction between bergenin and AKT1, IL6, TNF, TP53, MMP9 proteins, respectively.