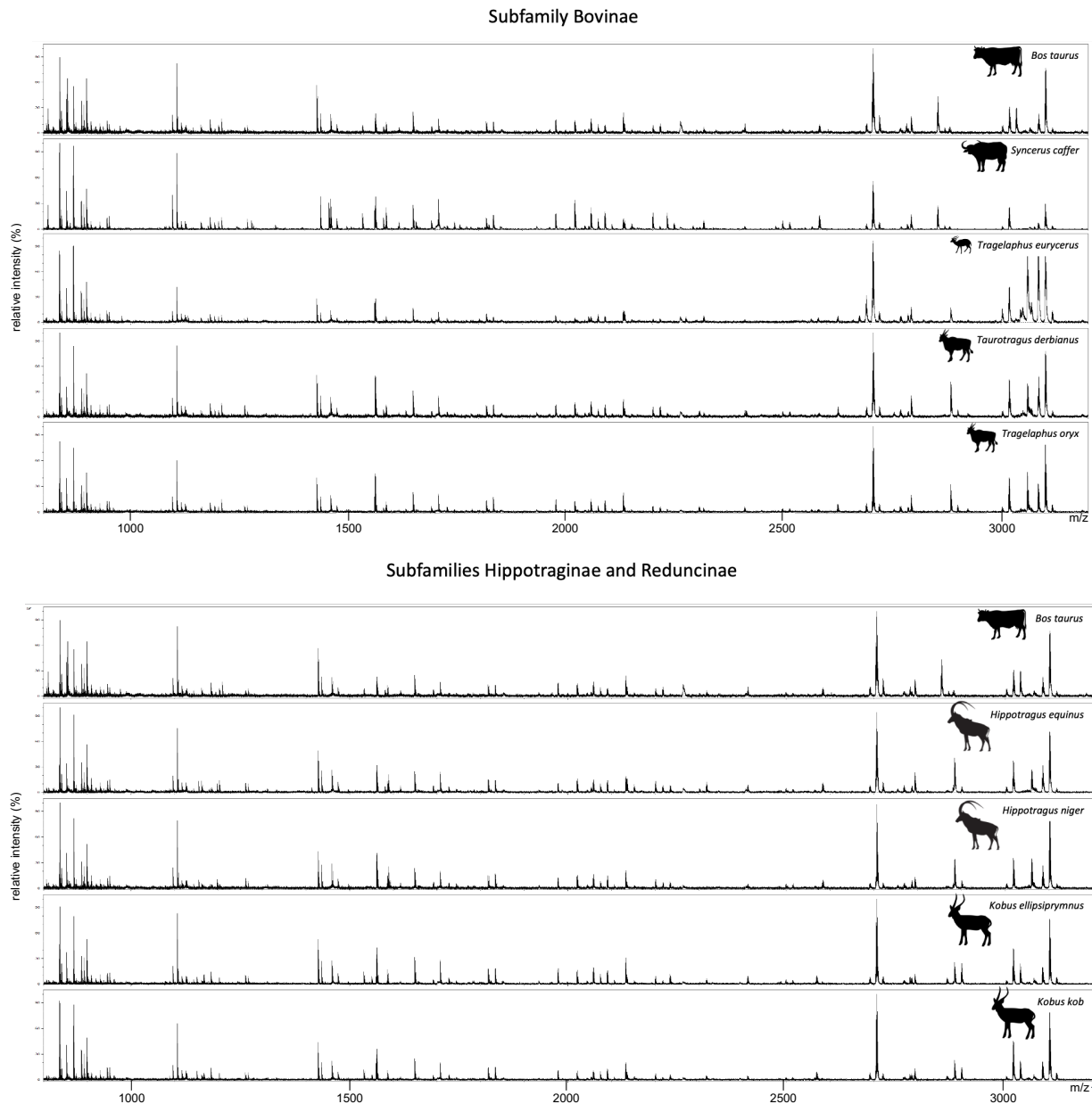
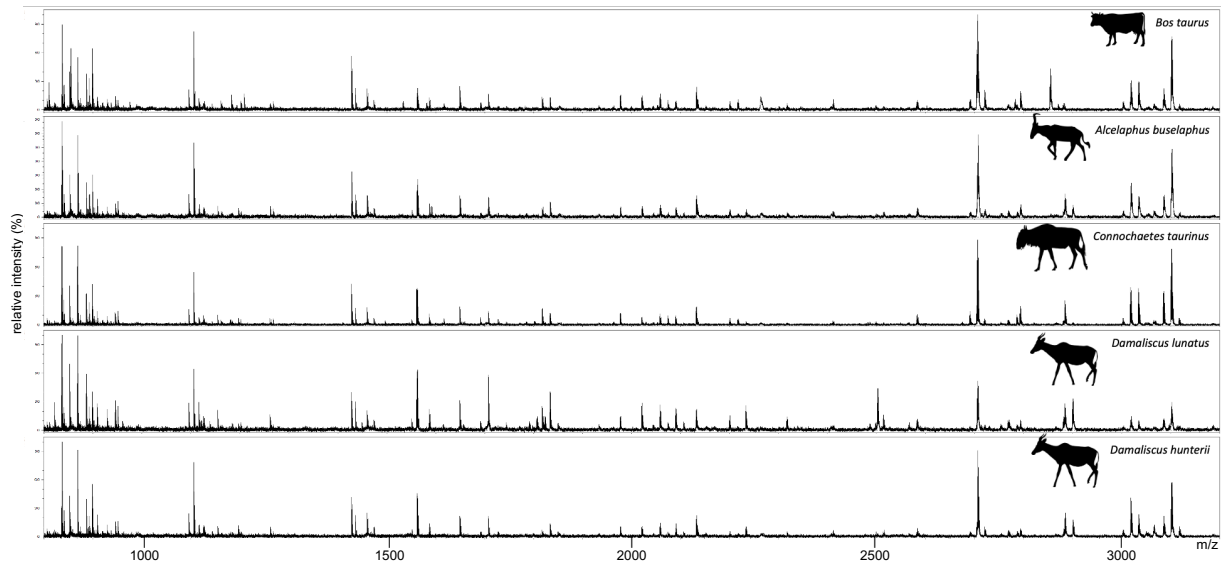


S1 Fig: MALDI-TOF Spectra from the Bovids

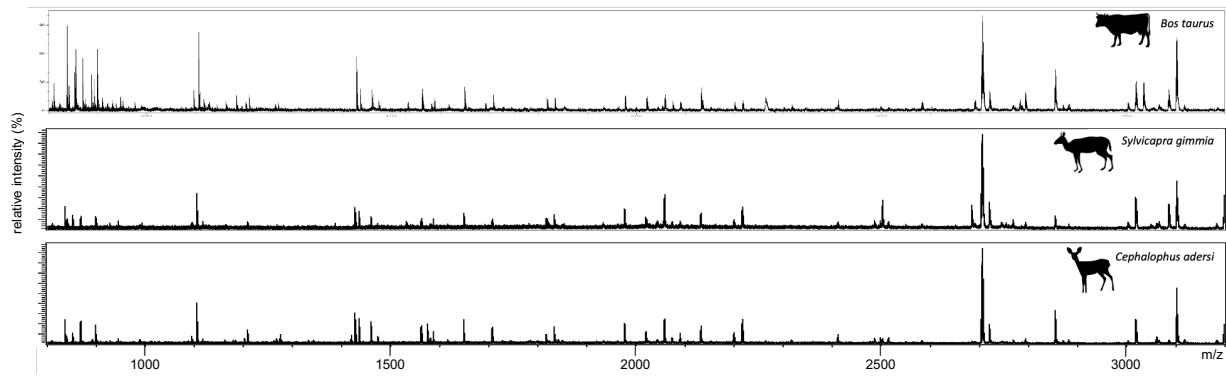
The following pages contain one example spectra from each of the species used in the study. Each subfamily has a page with grouped spectra and then each individual has a peak picked spectra individually. The first spectra in the grouped spectra for each subfamily is always *Bos taurus* (Bovinae) for easy comparison to a previously published species.



Subfamily Alcelaphinae



Subfamily Cephalophinae



Subfamily Antilopinae

