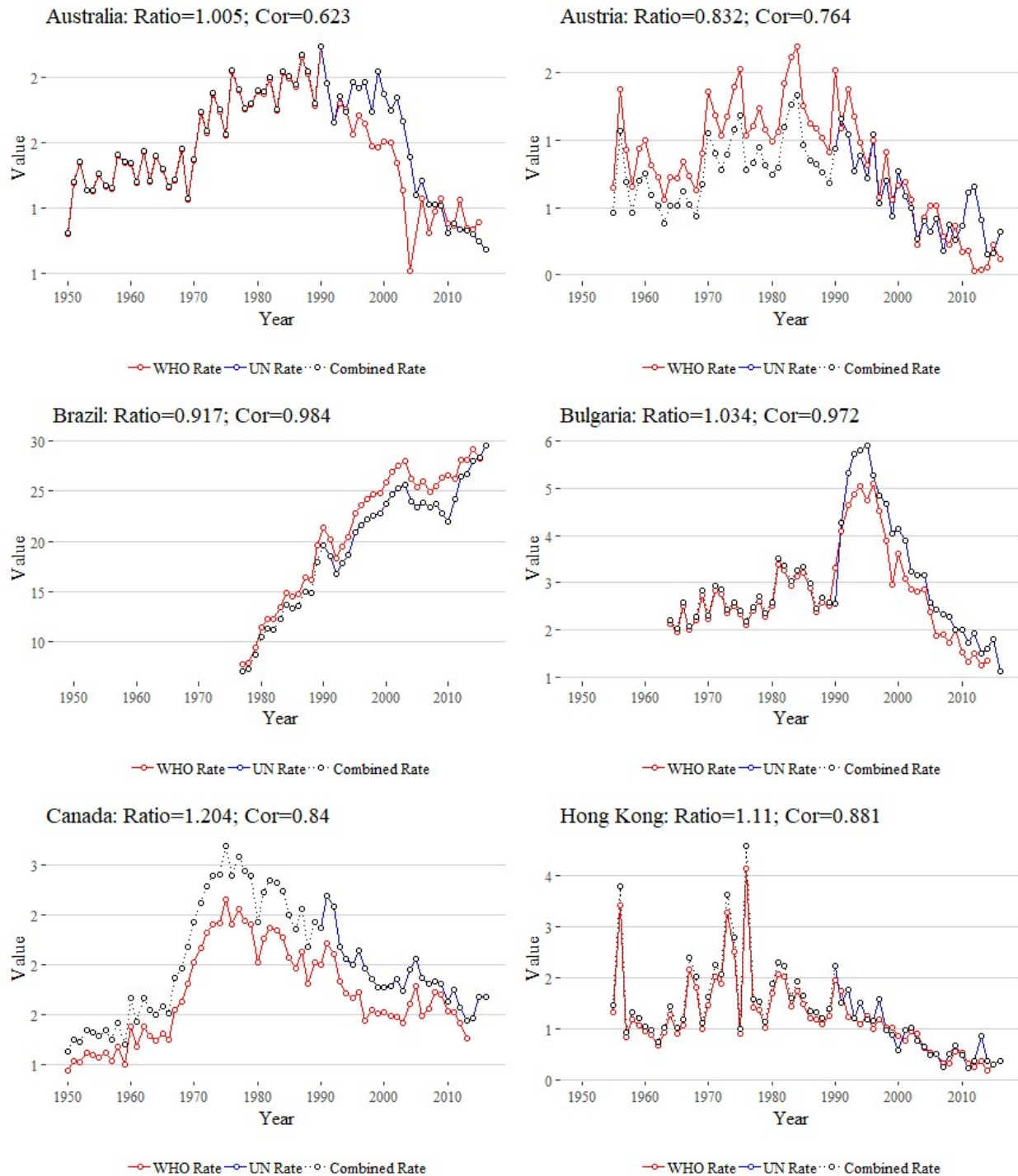
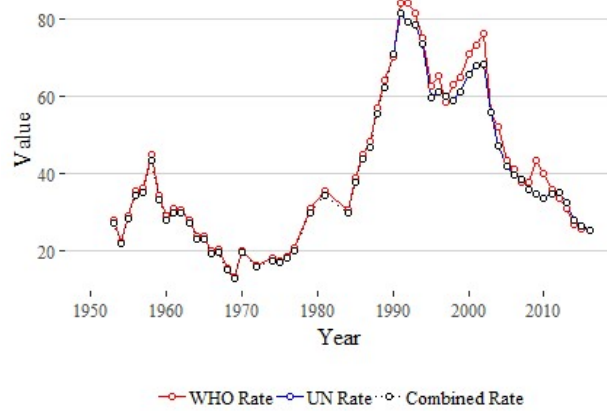


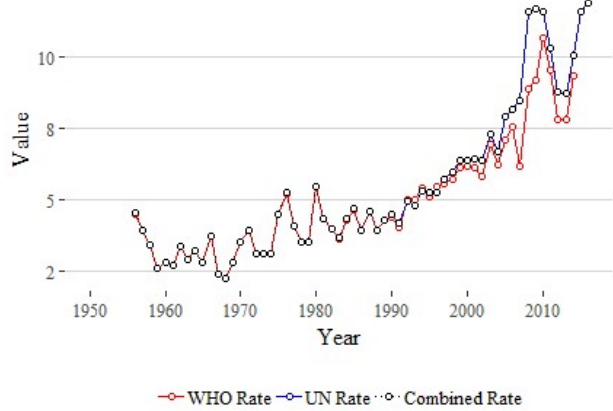
**S6 Fig. Homicide rate trend by source for countries with combined series.** The Ratio corresponds to four-year average between the WHO homicide rate and the UN homicide rate between 1990 and 1993. The correlation corresponds to the Pearson correlation between the both rates over all overlapping years in the two series.



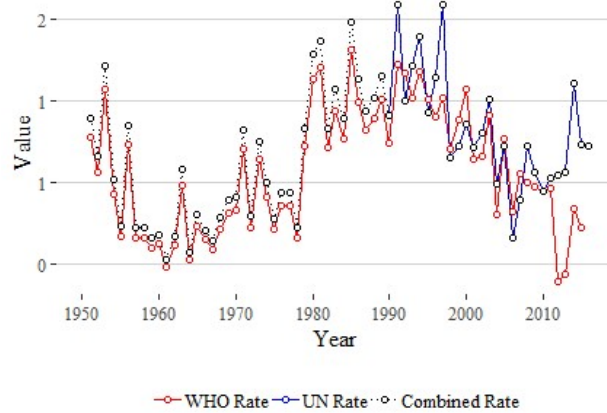
Colombia: Ratio=0.97; Cor=0.978



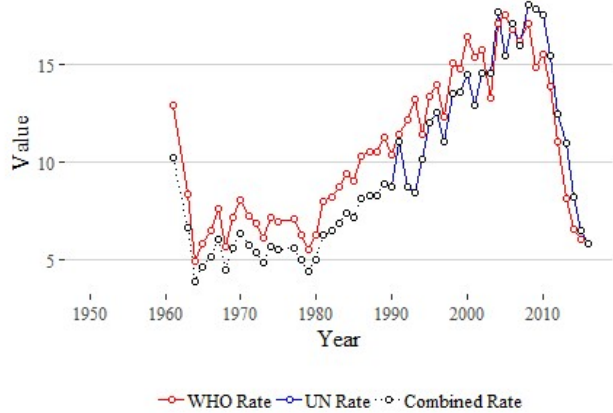
Costa Rica: Ratio=1.003; Cor=0.978



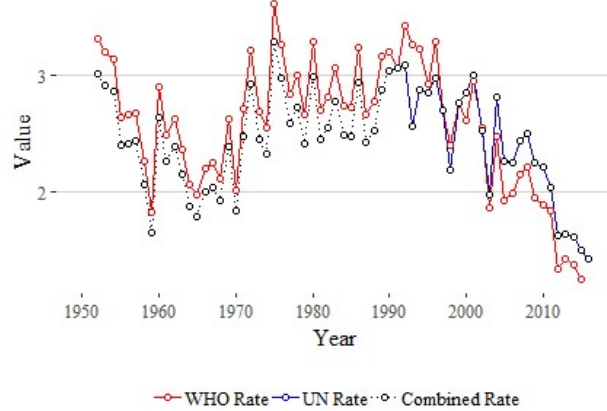
Denmark: Ratio=1.094; Cor=0.64



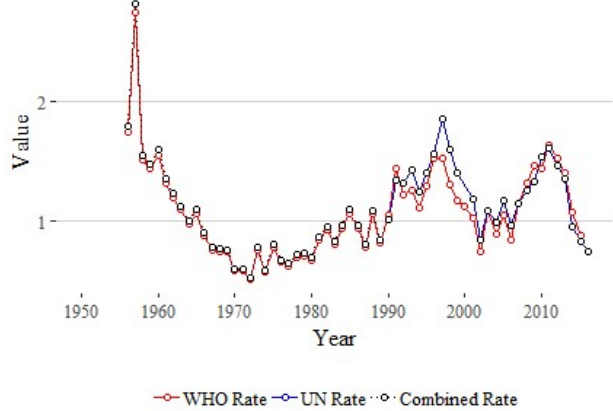
Ecuador: Ratio=0.79; Cor=0.896



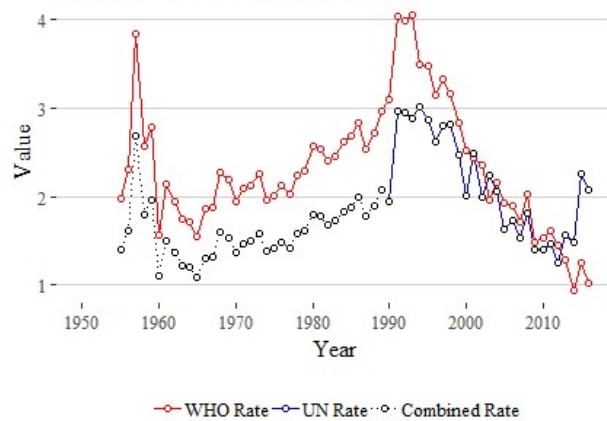
Finland: Ratio=0.909; Cor=0.922



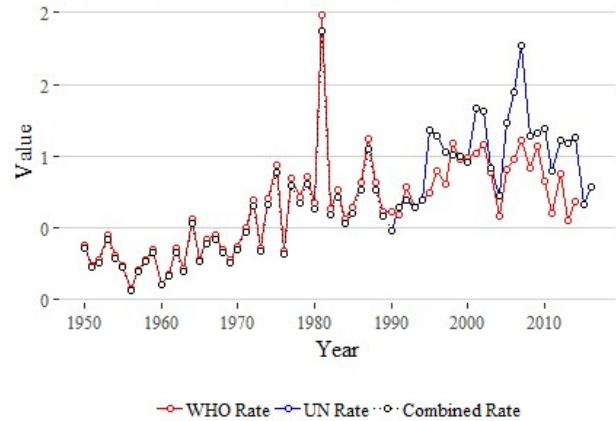
Greece: Ratio=1.028; Cor=0.885



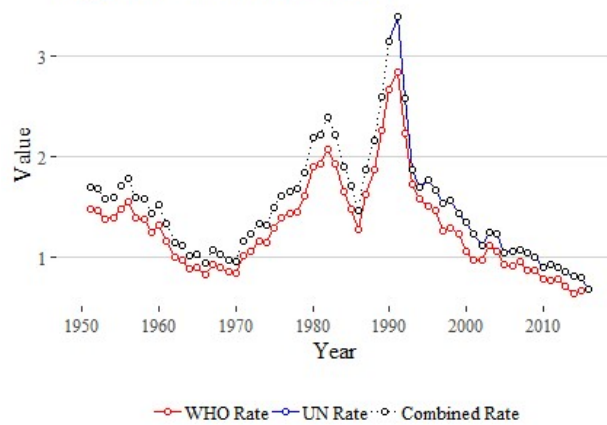
Hungary: Ratio=0.701; Cor=0.875



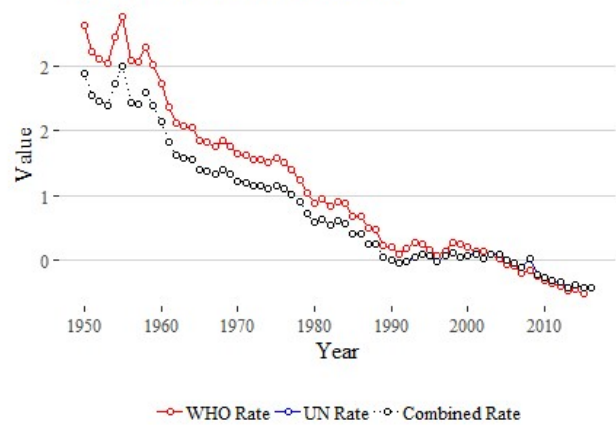
Ireland: Ratio=0.94; Cor=0.783



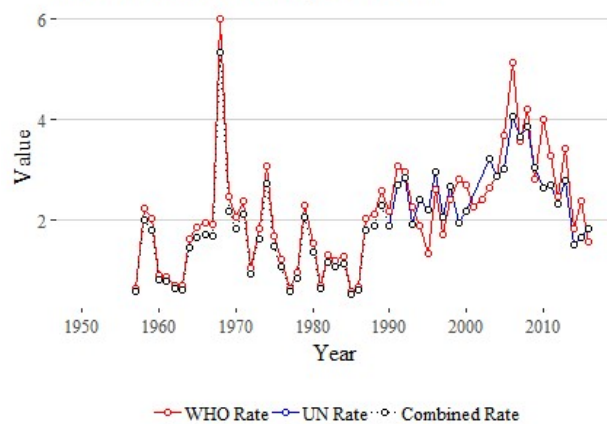
Italy: Ratio=1.152; Cor=0.996



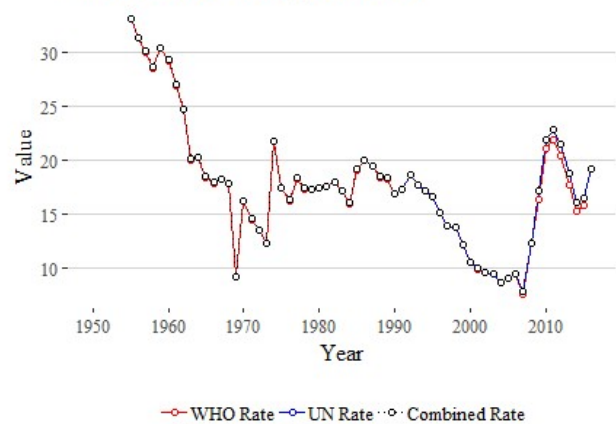
Japan: Ratio=0.841; Cor=0.924



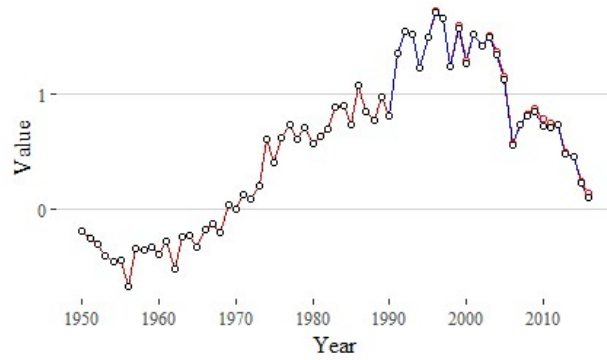
Mauritius: Ratio=0.889; Cor=0.819



Mexico: Ratio=1.002; Cor=0.999

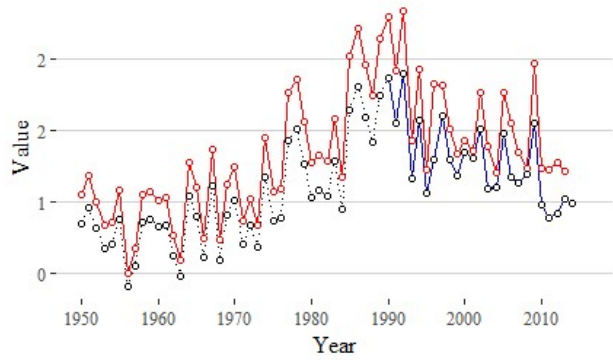


Netherlands: Ratio=1; Cor=0.999



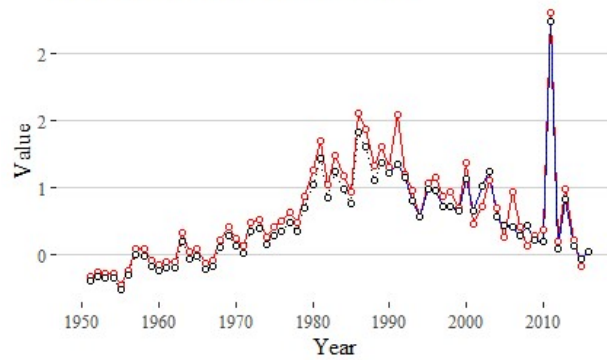
—○— WHO Rate —○— UN Rate ···○··· Combined Rate

New Zealand: Ratio=0.812; Cor=0.892



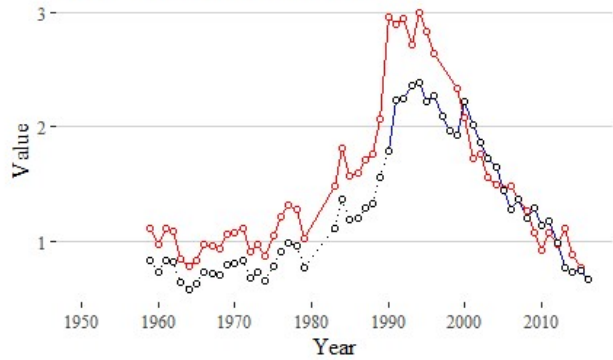
—○— WHO Rate —○— UN Rate ···○··· Combined Rate

Norway: Ratio=0.906; Cor=0.959



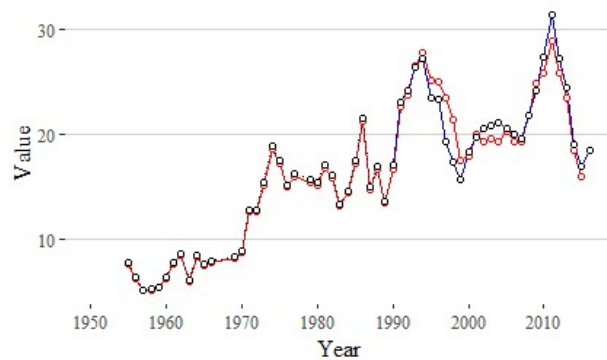
—○— WHO Rate —○— UN Rate ···○··· Combined Rate

Poland: Ratio=0.753; Cor=0.901



—○— WHO Rate —○— UN Rate ···○··· Combined Rate

Puerto Rico: Ratio=1.014; Cor=0.905



—○— WHO Rate —○— UN Rate ···○··· Combined Rate

Romania: Ratio=0.733; Cor=0.972



—○— WHO Rate —○— UN Rate ···○··· Combined Rate



