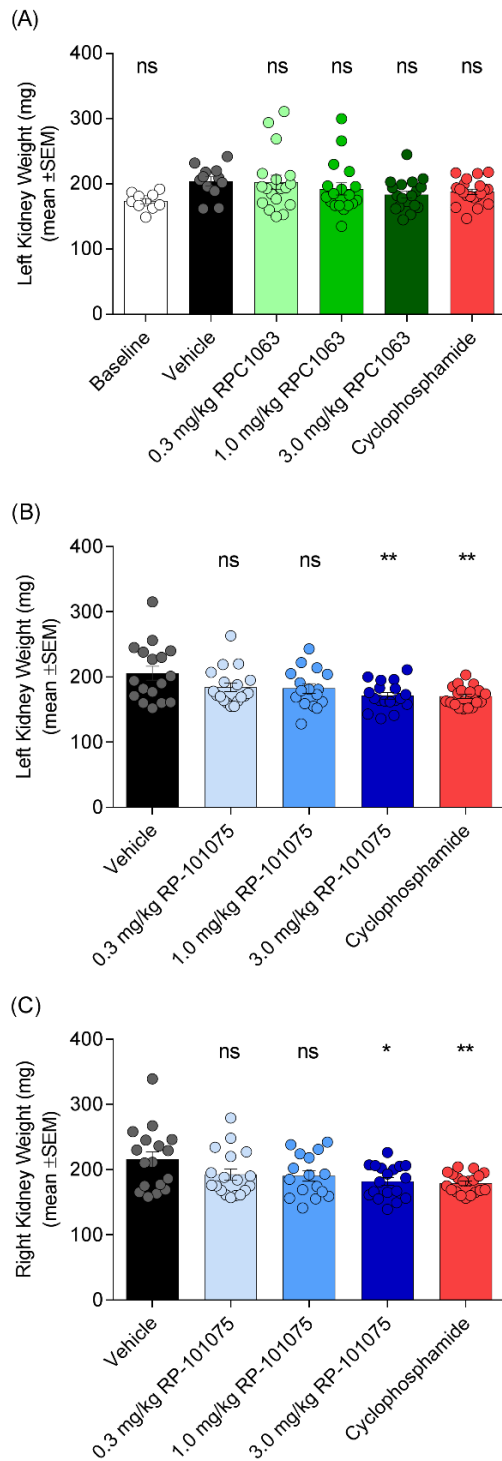
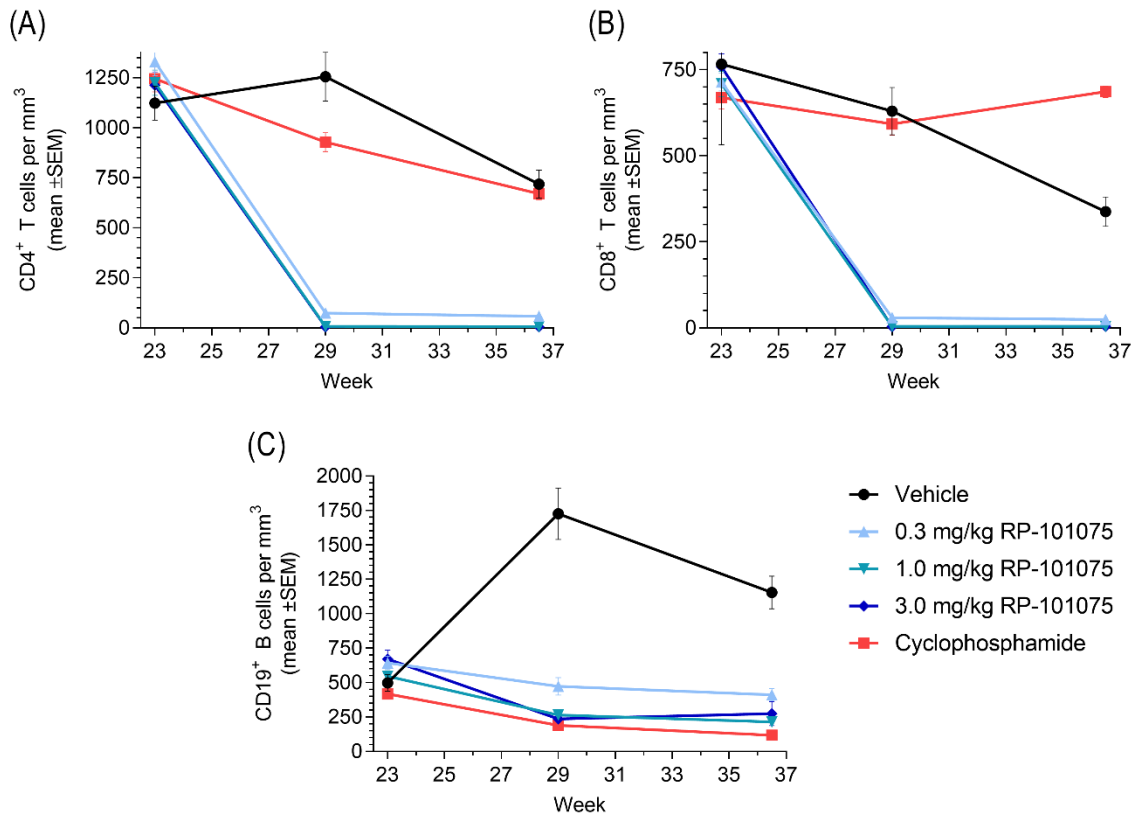


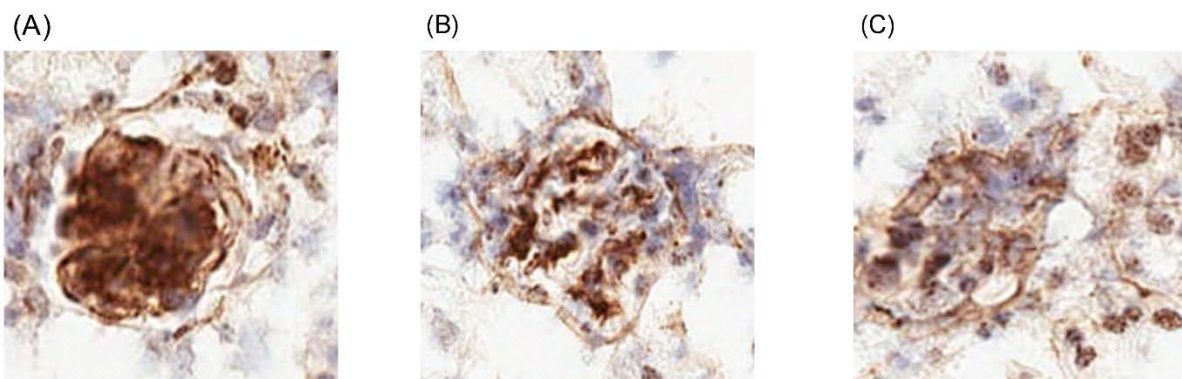
# SUPPLEMENTAL INFORMATION



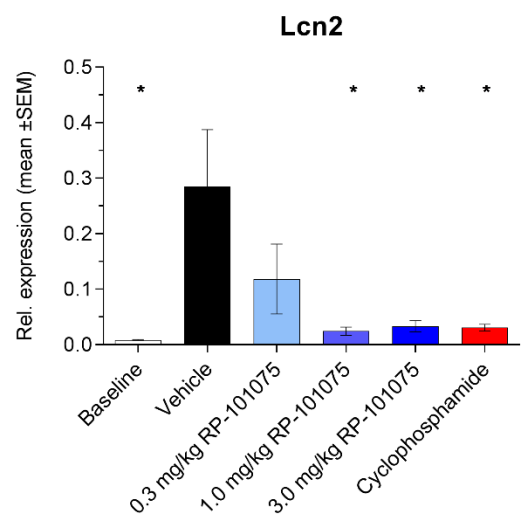
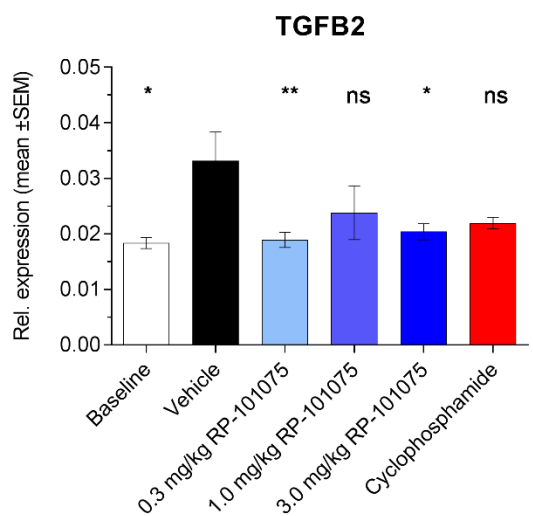
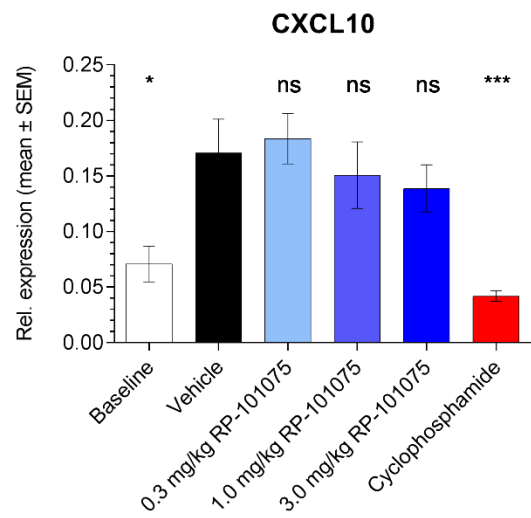
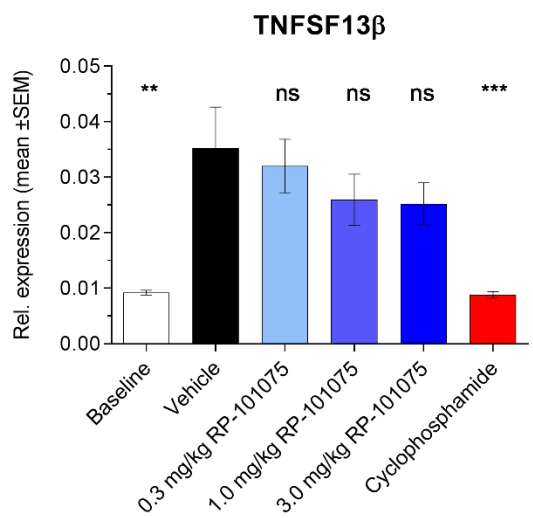
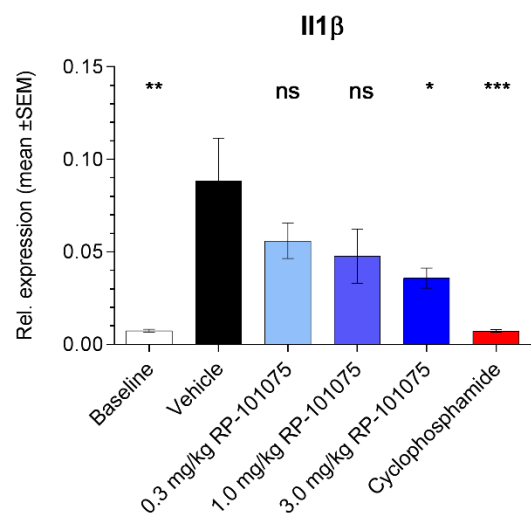
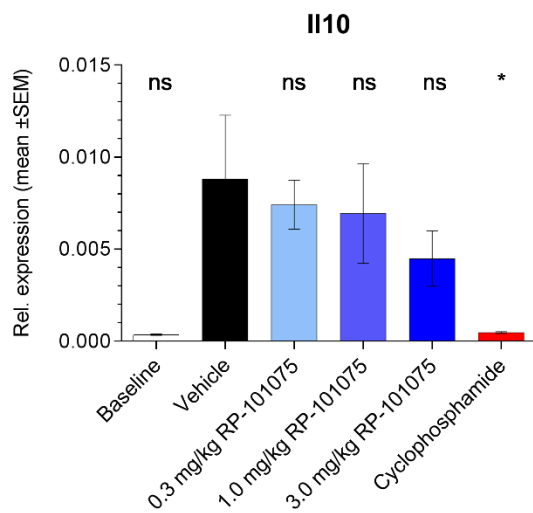
**(Figure A) Kidney weights.** Left (A) kidney weights in RPC1063-treated mice at week 42; and left (B) and right (C) kidney weights in RP-101075-treated mice at week 42. \* $p < 0.05$ , \*\* $p < 0.01$ , \*\*\* $p < 0.001$ , \*\*\*\* $p < 0.0001$ , ns = not significant, for treatment versus vehicle-treated animals.

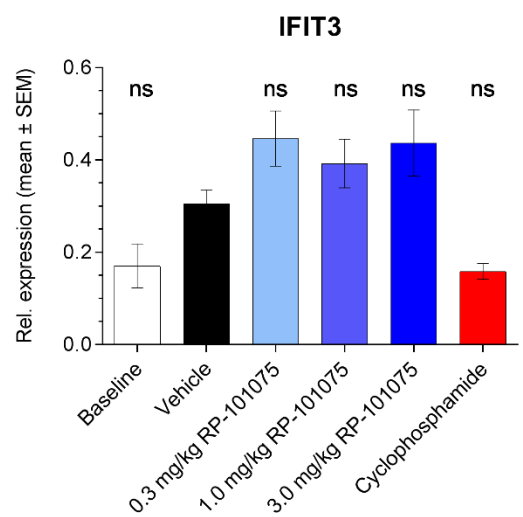
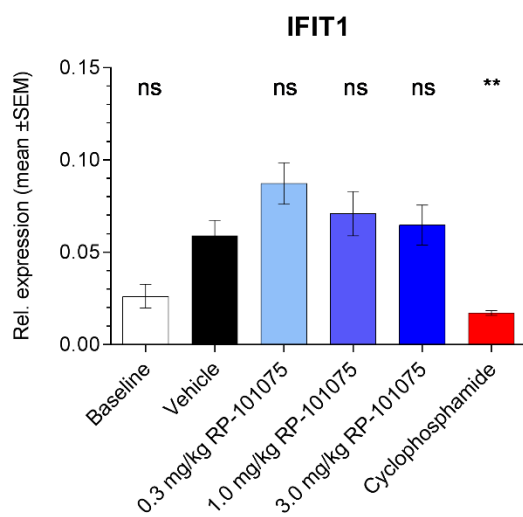
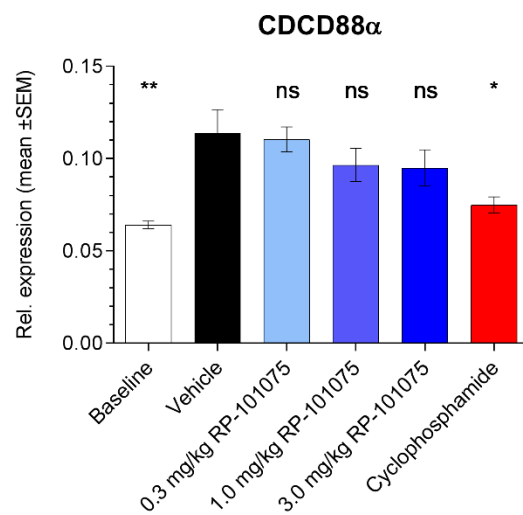
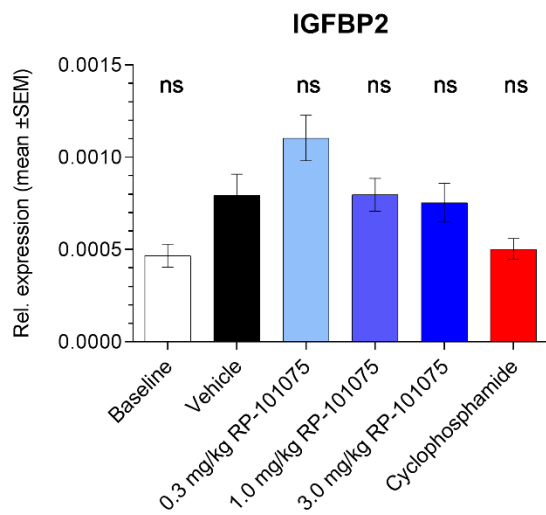
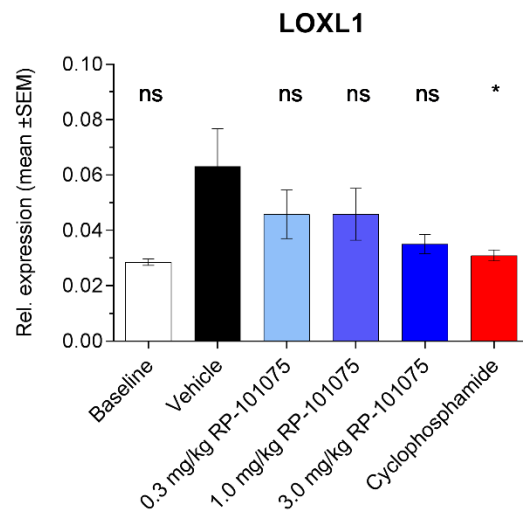
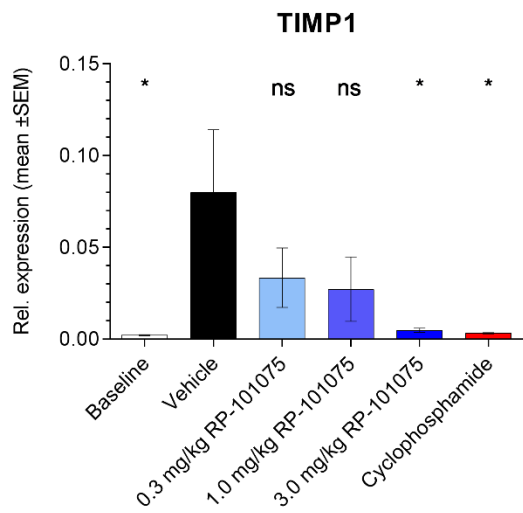


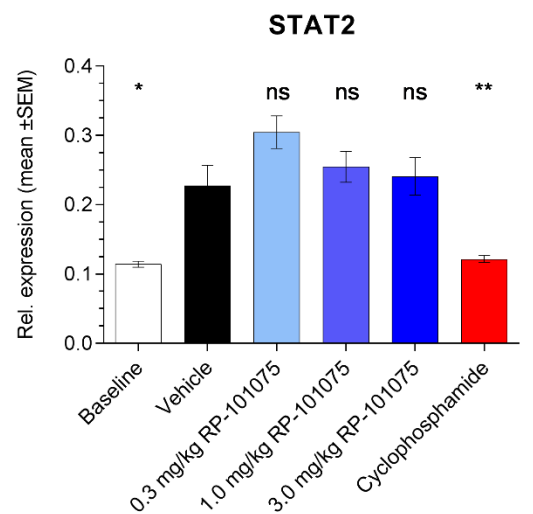
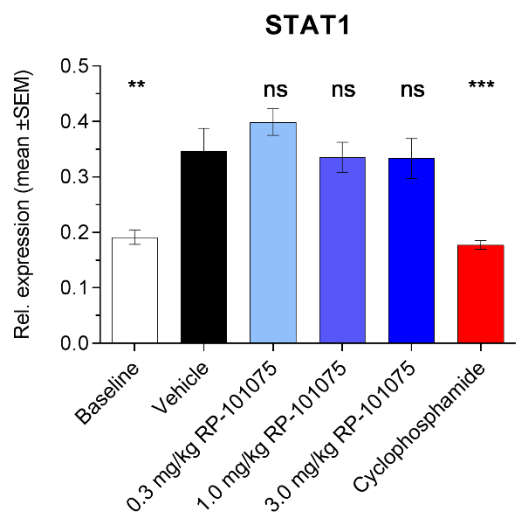
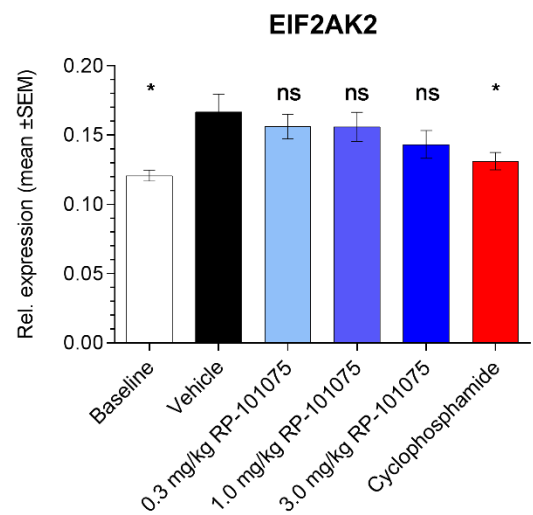
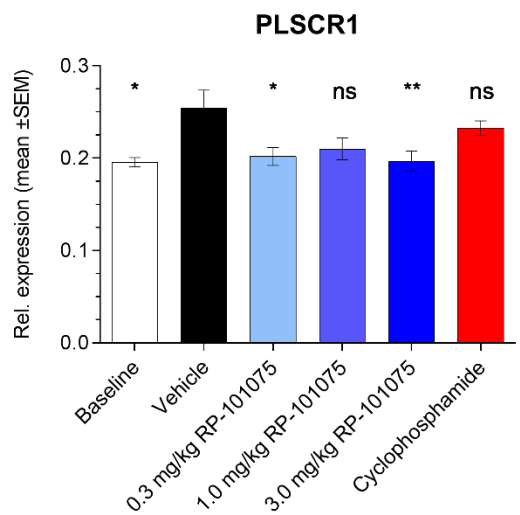
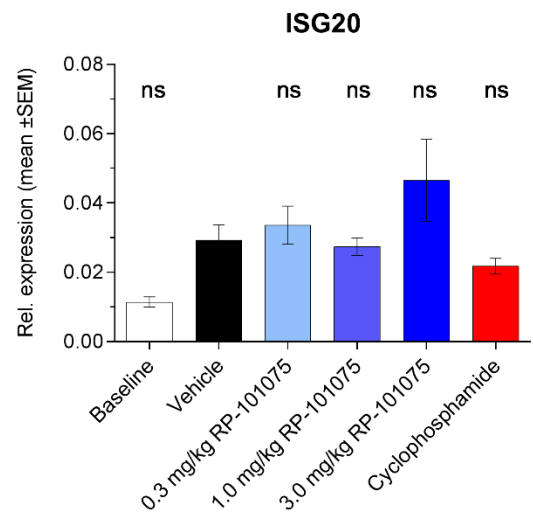
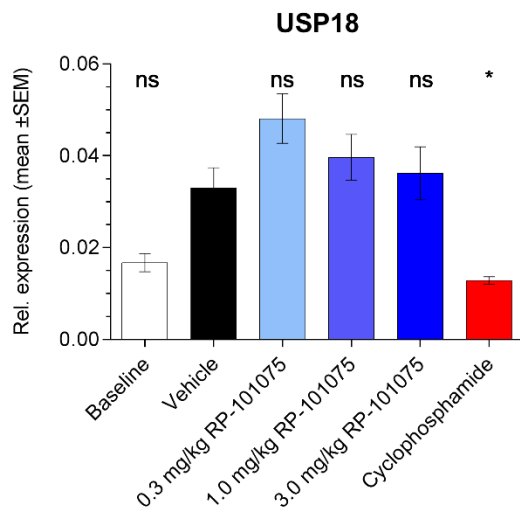
**(Figure B) Effect of RP-101075 Treatment on Circulating Lymphocyte Subsets.** (A) CD4<sup>+</sup> T cells, (B) CD8<sup>+</sup> T cells, and (C) CD19<sup>+</sup> B cell counts at weeks 23, 29, and 36.5.

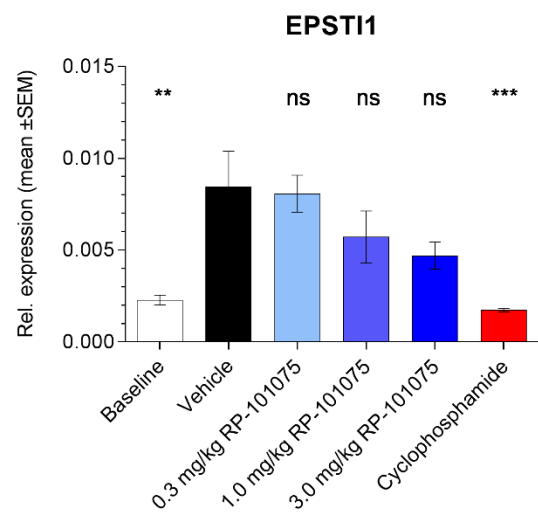
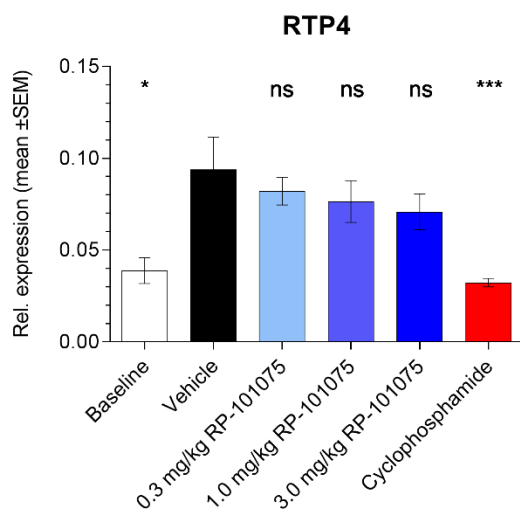
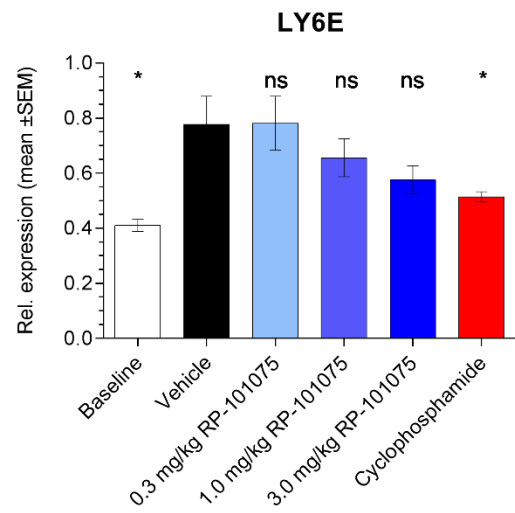
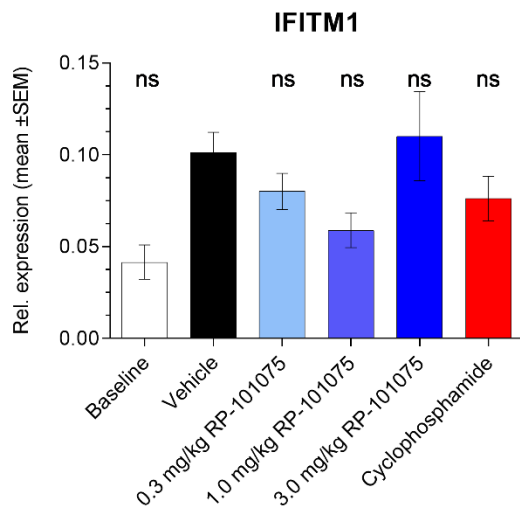
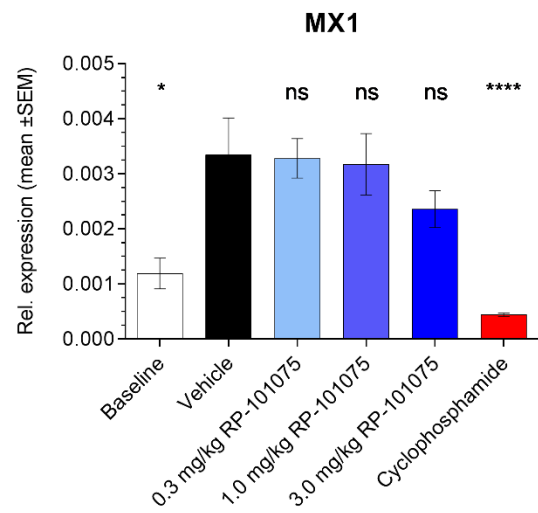
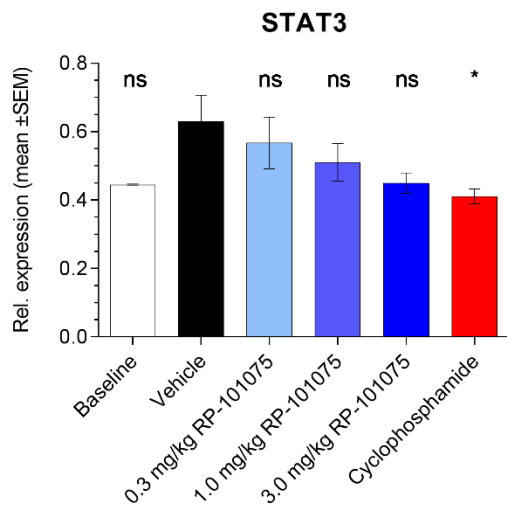


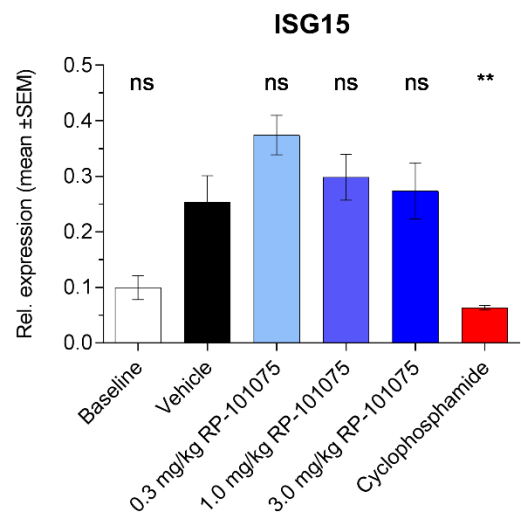
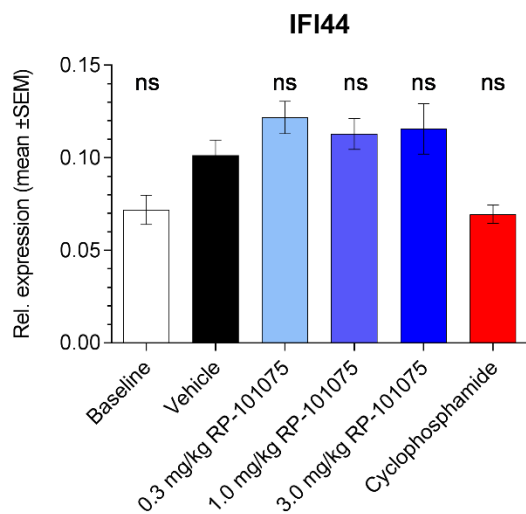
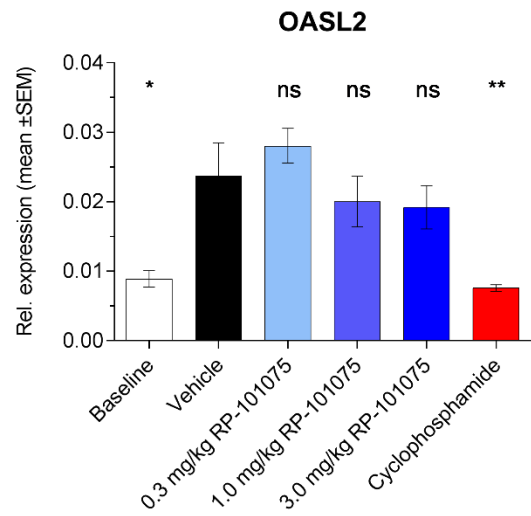
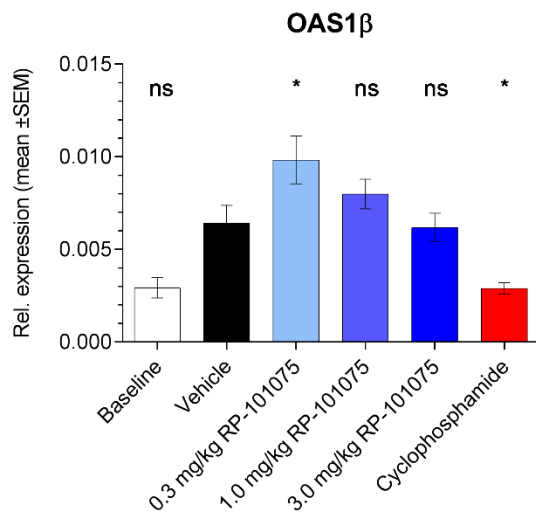
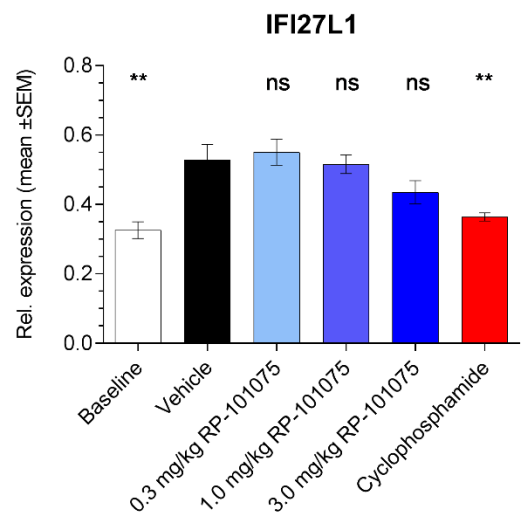
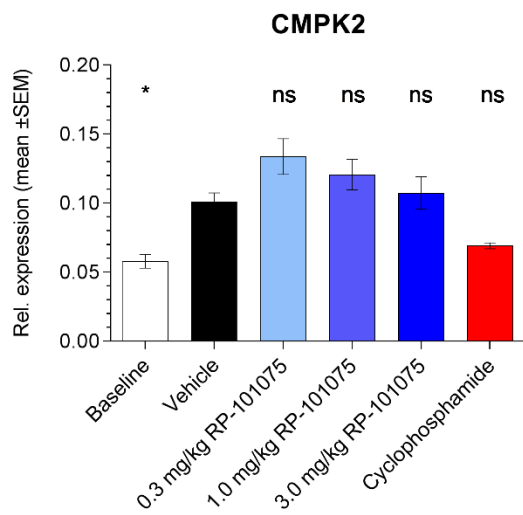
**(Figure C) Complement Component C3.** Glomeruli stained for complement component C3: (A) vehicle, (B) 3.0 mg/kg RP-101075, (C) cyclophosphamide.



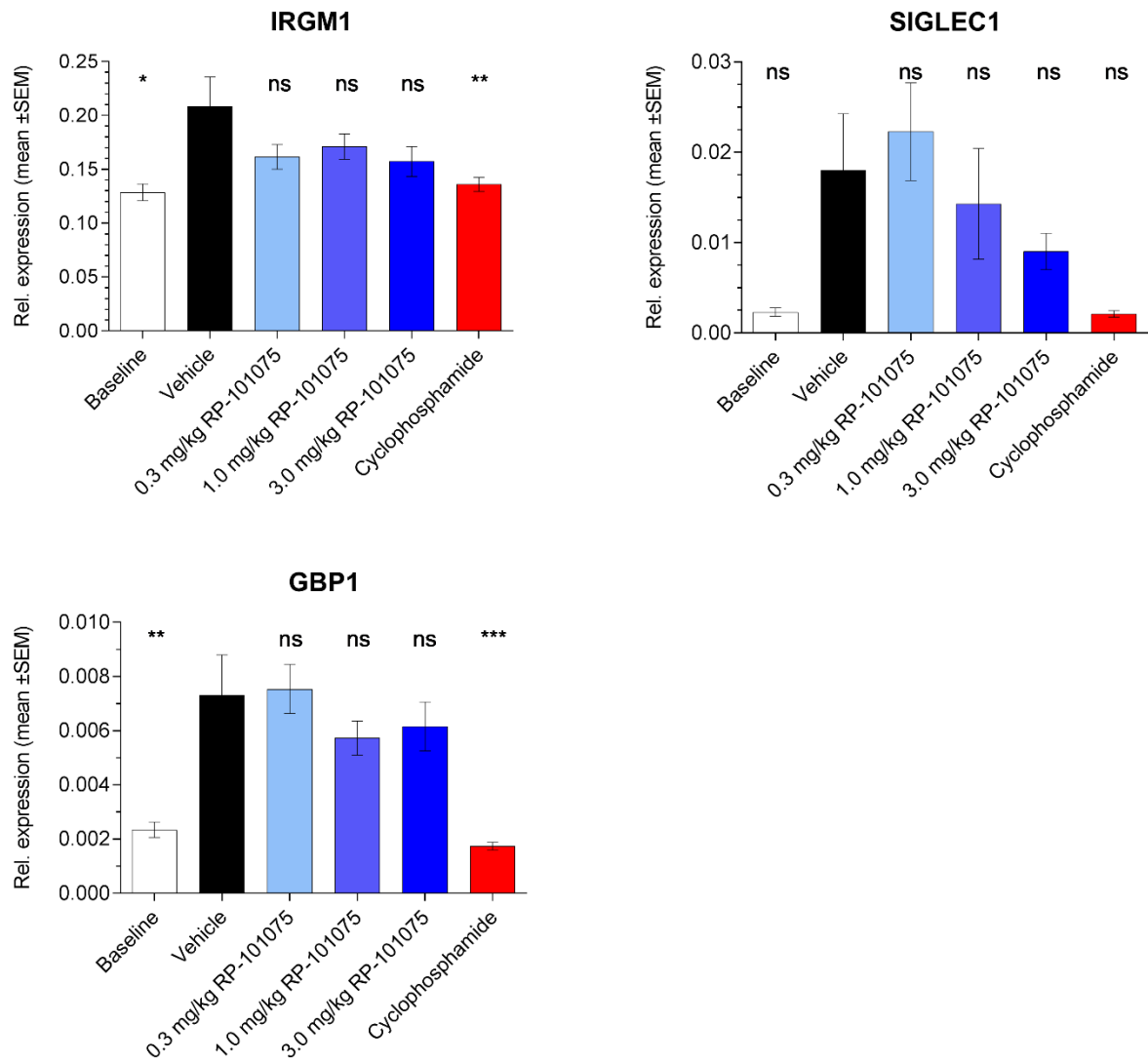












**(Figure D) Relative mRNA Gene Expression.** Inflammatory, pro-fibrotic, and IFN-regulated genes. \* $p < 0.05$ , \*\* $p < 0.01$ , \*\*\* $p < 0.001$ , \*\*\*\* $p < 0.0001$ , ns = not significant, for treatment versus vehicle-treated animals.