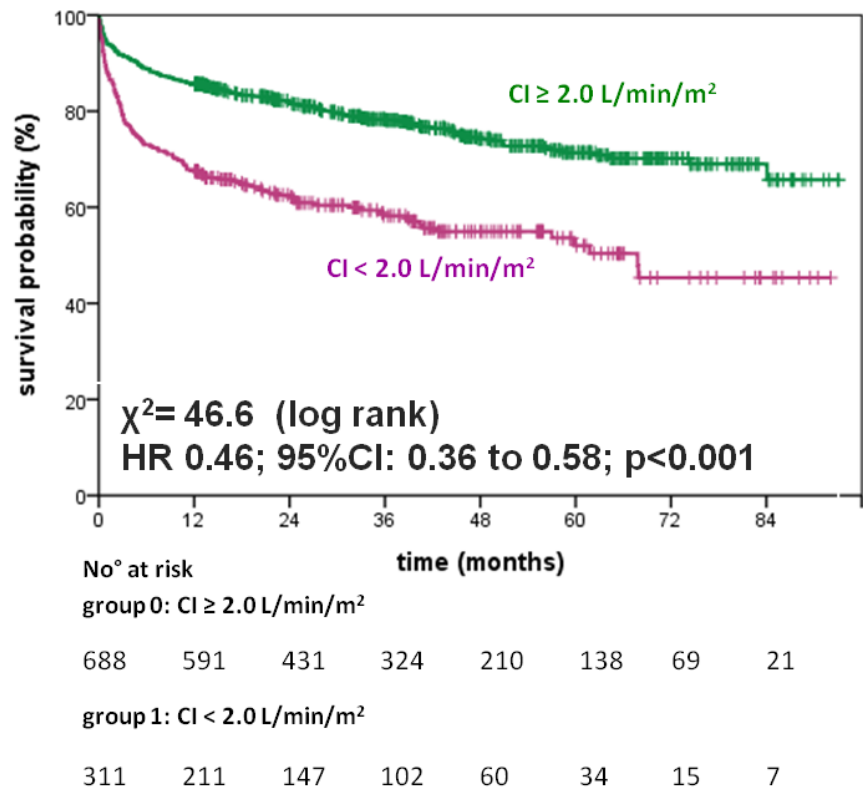


**S7 Fig. Kaplan-Meier curves for survival according to left ventricular function by CI (a) and LV-EF (b).** Optimal cut-off for dichotomous analysis was determined by ROC analyses. Abbreviations: CI cardiac index, LV-EF left ventricular ejection fraction, HR hazard ratio, 95%CI 95% confidence interval, ROC receiver-operator characteristics

A



B

