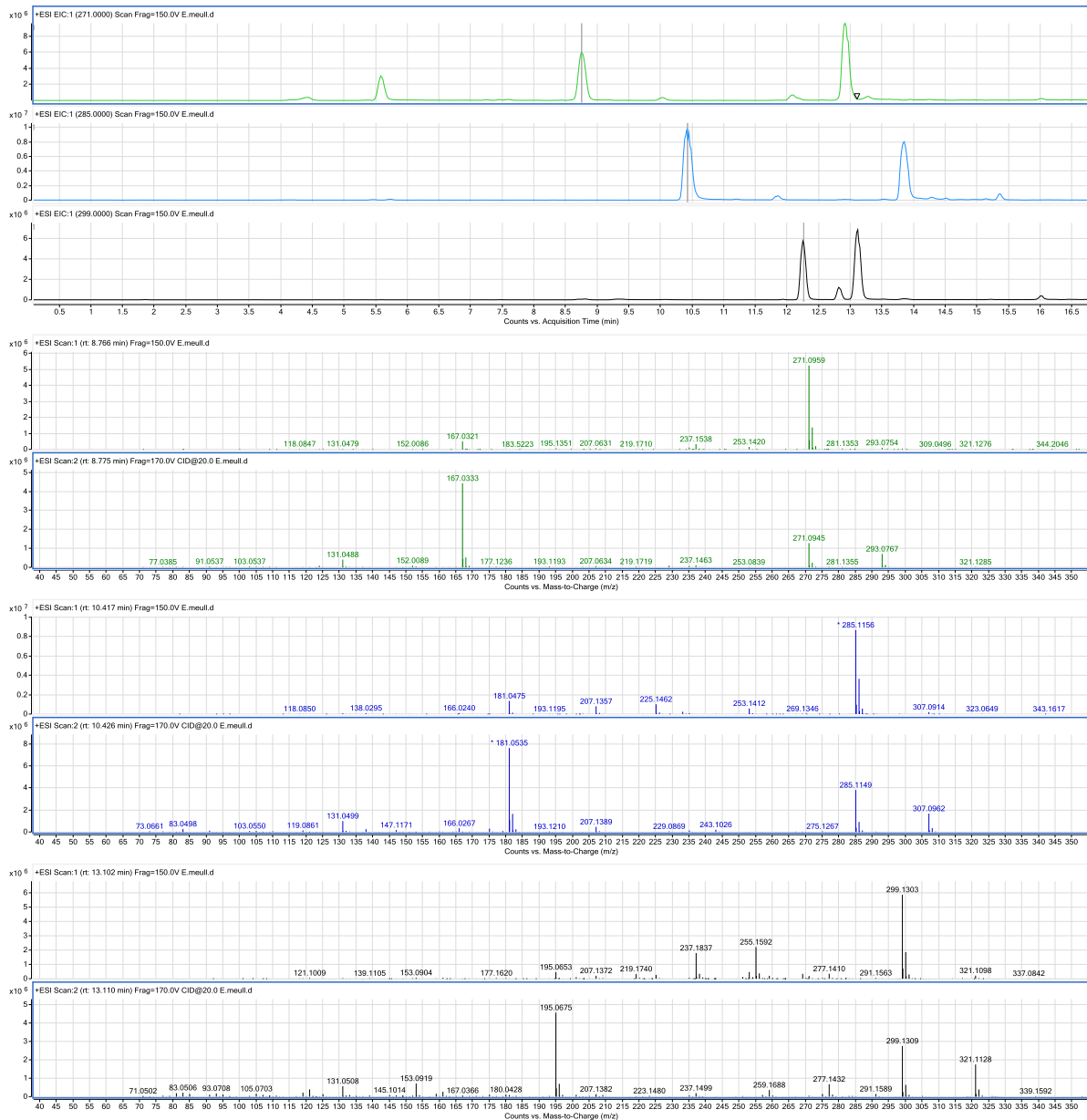


## Supporting Information

**S1 Figure. Representative mass spectra of putative flavanones and C-methyl flavanones detected in gland extracts of *E. meulleriana***



**S1 Fig. Multiple flavanones and C-methyl flavanones detected in gland extracts of *E. meulleriana* at  $m/z$   $[M+H]^+$  271, 285 and 299 using ESI-LCMS/MS in positive mode. All compounds show the characteristic loss of 104 Da of flavanones.**