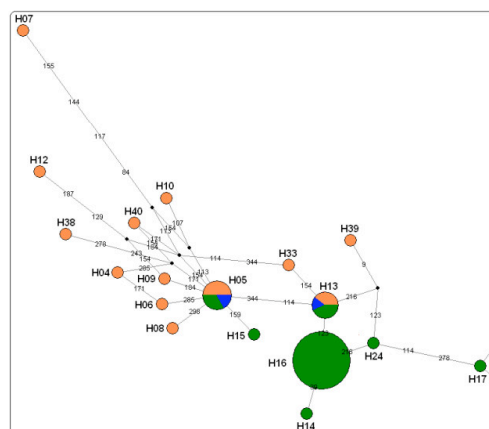
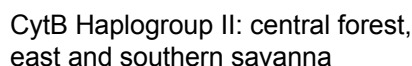
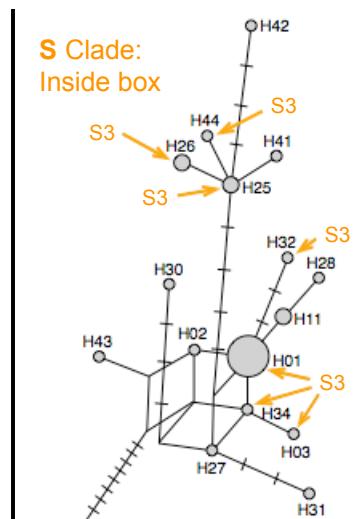
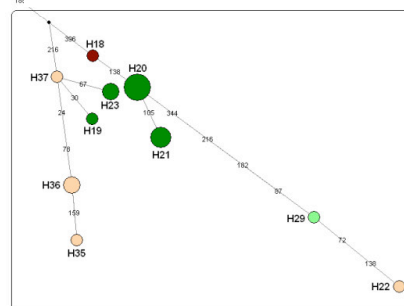
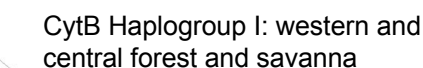


(B) Identification *within* the mtDNA CytB network of Johnson and colleagues (2007) of the elephant sequences of Debruyne (2005), showing the clade and sub-clade assignments previously determined by Debruyne



(A) The *three* African elephant “taxonomic” groups proposed by Johnson and colleagues (2007) based on mtDNA CytB



**F Clade:**  
All haplotypes outside box

(C) Names  
given to **F**  
and **S**  
mtDNA  
clades

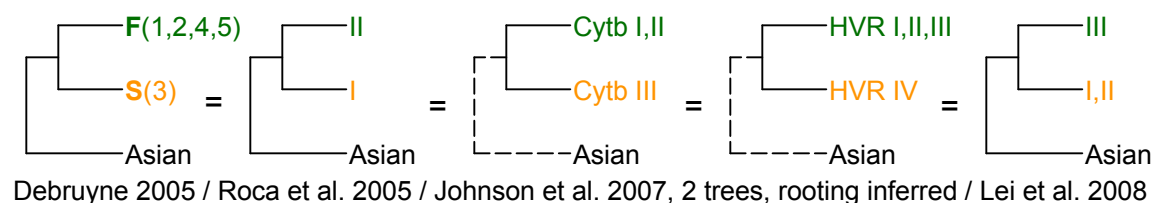


Figure S1