

## CORRECTION

# Correction: Investigation of the relationship between sensorineural hearing loss and associated comorbidities in patients with chronic kidney disease: A nationwide, population-based cohort study

The *PLOS ONE* Staff

The images for Figs 1 and 2 are incorrectly switched. The image that appears as Fig 1 should be Fig 2, and the image that appears as Fig 2 should be Fig 1. The figure captions appear in the correct order. The publisher apologizes for the error.

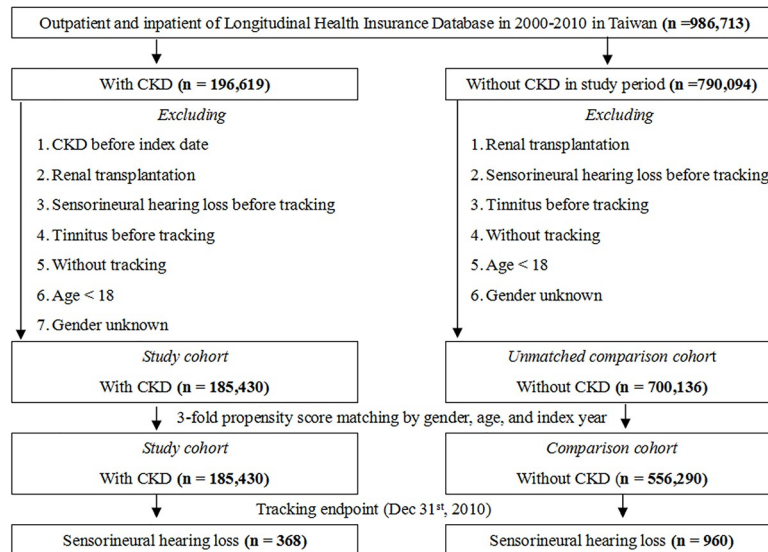


## OPEN ACCESS

**Citation:** The *PLOS ONE* Staff (2021) Correction: Investigation of the relationship between sensorineural hearing loss and associated comorbidities in patients with chronic kidney disease: A nationwide, population-based cohort study. *PLoS ONE* 16(2): e0247371. <https://doi.org/10.1371/journal.pone.0247371>

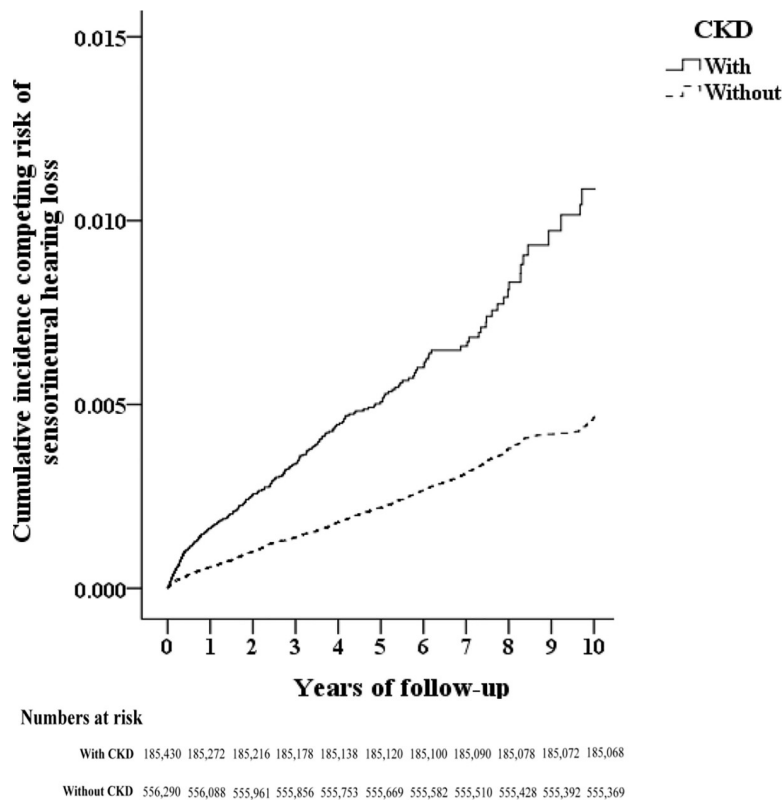
**Published:** February 17, 2021

**Copyright:** © 2021 The PLOS ONE Staff. This is an open access article distributed under the terms of the [Creative Commons Attribution License](https://creativecommons.org/licenses/by/4.0/), which permits unrestricted use, distribution, and reproduction in any medium, provided the original author and source are credited.



**Fig 1. The flowchart of study sample selection.**

<https://doi.org/10.1371/journal.pone.0247371.g001>



**Fig 2. The cumulative incidence competing risk (CICR) method for the incidence of sensorineural hearing loss among patients aged 18 and over stratified by CKD ( $p < .001$ ).**

<https://doi.org/10.1371/journal.pone.0247371.g002>

## Reference

1. Wu K-L, Shih C-P, Chan J-S, Chung C-H, Lin H-C, Tsao C-H, et al. (2020) Investigation of the relationship between sensorineural hearing loss and associated comorbidities in patients with chronic kidney disease: A nationwide, population-based cohort study. PLoS ONE 15(9): e0238913. <https://doi.org/10.1371/journal.pone.0238913> PMID: 32915865