

CORRECTION

Correction: Molecular Evidence for Multiple Origins of the European Spined Loaches (Teleostei, Cobitidae)

The PLOS ONE Staff

The image for [Fig 2](#) is incorrect. The publisher apologizes for the error. Please see the corrected [Fig 2](#) here.



OPEN ACCESS

Citation: The PLOS ONE Staff (2016) Correction: Molecular Evidence for Multiple Origins of the European Spined Loaches (Teleostei, Cobitidae). PLoS ONE 11(3): e0151228. doi:10.1371/journal.pone.0151228

Published: March 18, 2016

Copyright: © 2016 The PLOS ONE Staff. This is an open access article distributed under the terms of the [Creative Commons Attribution License](#), which permits unrestricted use, distribution, and reproduction in any medium, provided the original author and source are credited.

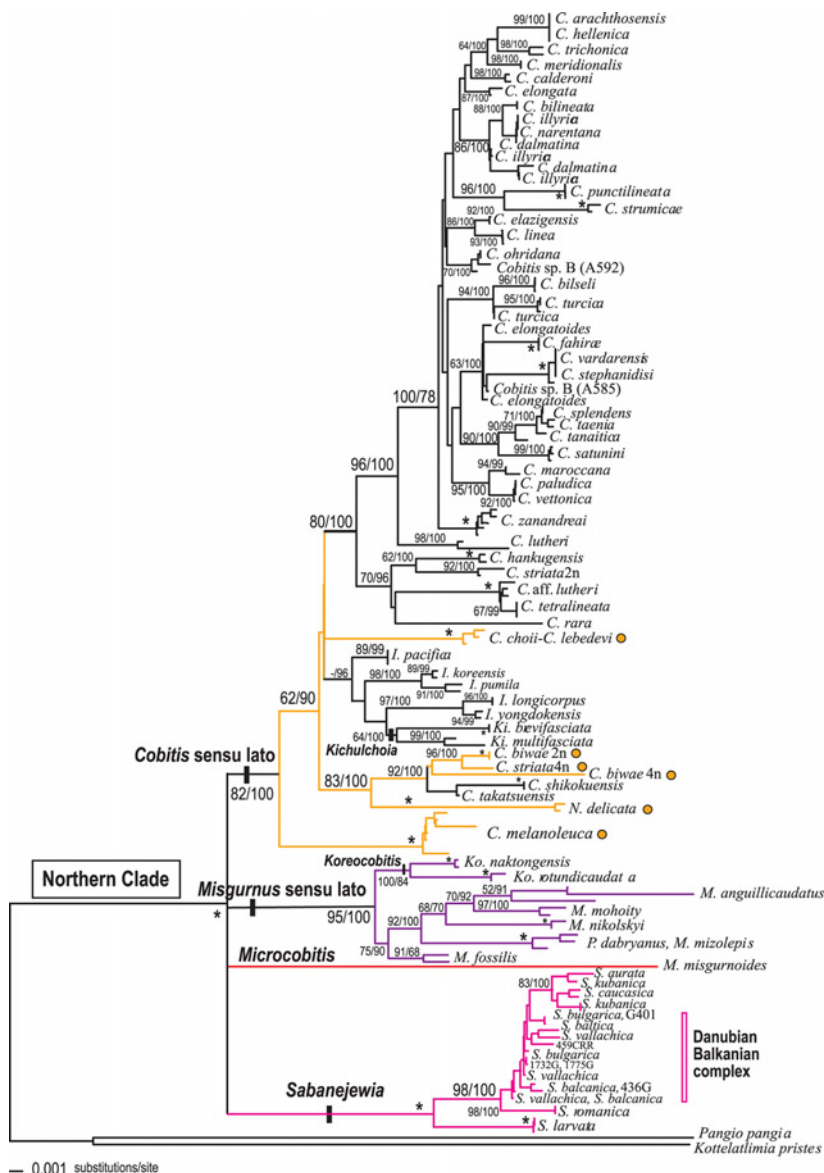


Fig 2. Phylogenetic relationships of the Northern Clade based on the RAG-1 dataset (N = 168).

Numbers on branches represent the posterior probabilities for BI (x100) and bootstrap values for ML (1000 replicates), respectively. Asterisks indicate values that are 100%; (-) indicate the branch was not supported. Branch colours represent major Northern Clade lineages obtained with the mitochondrial (cyt *b*) dataset as shown in Fig 1. Orange dots indicate taxa belonging to Subgroup I of the *Cobitis* sensu lato group recovered with the cyt *b* dataset.

doi:10.1371/journal.pone.0151228.g001

Reference

1. Perdices A, Bohlen J, Šlechtová V, Doadrio I (2016) Molecular Evidence for Multiple Origins of the European Spined Loaches (Teleostei, Cobitidae). PLoS ONE 11(1): e0144628. doi:[10.1371/journal.pone.0144628](https://doi.org/10.1371/journal.pone.0144628) PMID: [26727121](https://pubmed.ncbi.nlm.nih.gov/26727121/)