

RESEARCH ARTICLE

# Plant water potential improves prediction of empirical stomatal models

William R. L. Anderegg<sup>1\*</sup>, Adam Wolf<sup>2</sup>, Adriana Arango-Velez<sup>3</sup>, Brendan Choat<sup>4</sup>, Daniel J. Chmura<sup>5</sup>, Steven Jansen<sup>6</sup>, Thomas Kolb<sup>7</sup>, Shan Li<sup>6</sup>, Frederick Meinzer<sup>8</sup>, Pilar Pita<sup>9</sup>, Víctor Resco de Dios<sup>10</sup>, John S. Sperry<sup>1</sup>, Brett T. Wolfe<sup>11</sup>, Stephen Pacala<sup>12</sup>

**1** Department of Biology, University of Utah, Salt Lake City, Utah, United States of America, **2** Arable Labs, Princeton, New Jersey, United States of America, **3** Connecticut Agricultural Experiment Station, New Haven, Connecticut, United States of America, **4** Hawkesbury Institute for the Environment, Western Sydney University, Penrith, New South Wales, Australia, **5** Institute of Dendrology, Polish Academy of Sciences, Kórnik, Poland, **6** Institute of Systematic Botany and Ecology, Ulm University, Ulm, Germany, **7** School of Forestry, Northern Arizona University, Flagstaff, Arizona, United States of America, **8** Pacific Northwest Research Station, United States Forest Service, Portland, Oregon, United States of America, **9** Technical University of Madrid, Madrid, Spain, **10** Department of Crop and Forest Sciences and Agrotecnio Center, Universitat de Lleida, Lleida, Spain, **11** Smithsonian Tropical Research Institute, Balboa, Panama, **12** Department of Ecology and Evolutionary Biology, Princeton University, Princeton, New Jersey, United States of America

\* [anderegg@utah.edu](mailto:anderegg@utah.edu)



**OPEN ACCESS**

**Citation:** Anderegg WRL, Wolf A, Arango-Velez A, Choat B, Chmura DJ, Jansen S, et al. (2017) Plant water potential improves prediction of empirical stomatal models. PLoS ONE 12(10): e0185481. <https://doi.org/10.1371/journal.pone.0185481>

**Editor:** Ricardo Aroca, Estacion Experimental del Zaidin, SPAIN

**Received:** March 29, 2017

**Accepted:** September 13, 2017

**Published:** October 12, 2017

**Copyright:** This is an open access article, free of all copyright, and may be freely reproduced, distributed, transmitted, modified, built upon, or otherwise used by anyone for any lawful purpose. The work is made available under the [Creative Commons CC0](https://creativecommons.org/licenses/by/4.0/) public domain dedication.

**Data Availability Statement:** All relevant data are available from Dryad at: [doi:10.5061/dryad.9fp38](https://doi.org/10.5061/dryad.9fp38).

**Funding:** Funding for this research was provided by NSF DEB EF-1340270 and the Climate Mitigation Initiative at the Princeton Environmental Institute, Princeton University. SL acknowledges financial support from the China Scholarship Council (CSC). VRD acknowledges funding from Ramón y Cajal fellowship (RYC-2012-10970). BTW was supported by the Next Generation Ecosystem Experiments-Tropics, funded by the U.S. Department of Energy, Office of Science, Office of

## Abstract

Climate change is expected to lead to increases in drought frequency and severity, with deleterious effects on many ecosystems. Stomatal responses to changing environmental conditions form the backbone of all ecosystem models, but are based on empirical relationships and are not well-tested during drought conditions. Here, we use a dataset of 34 woody plant species spanning global forest biomes to examine the effect of leaf water potential on stomatal conductance and test the predictive accuracy of three major stomatal models and a recently proposed model. We find that current leaf-level empirical models have consistent biases of over-prediction of stomatal conductance during dry conditions, particularly at low soil water potentials. Furthermore, the recently proposed stomatal conductance model yields increases in predictive capability compared to current models, and with particular improvement during drought conditions. Our results reveal that including stomatal sensitivity to declining water potential and consequent impairment of plant water transport will improve predictions during drought conditions and show that many biomes contain a diversity of plant stomatal strategies that range from risky to conservative stomatal regulation during water stress. Such improvements in stomatal simulation are greatly needed to help unravel and predict the response of ecosystems to future climate extremes.

## Introduction

Anthropogenic climate change is expected to lead to more frequent and more severe droughts in many regions across the globe [1,2]. Both temperature-driven increases in evaporative

Biological and Environmental Research. DJC acknowledges funding from the National Science Centre, Poland (NN309 713340). WRLA was supported in part by NSF DEB 1714972. The funders had no role in study design, data collection and analysis, decision to publish, or preparation of the manuscript.

**Competing interests:** AW is currently employed by Arable Labs Inc. Arable Labs Inc does not derive benefits from the publication of this work, and had no role in the funding of the work or other dimensions of participation other than paying the salary of the author. There are no patents, products in development or marketed products to declare. This does not alter our adherence to PLOS ONE policies on sharing data and materials.

demand and decreases in soil moisture are projected, which are known to stress plants substantially [3,4]. Severe drought plays a critical role in terrestrial carbon cycling, driving declines in plant productivity and potentially loss of carbon stocks if accompanied by widespread tree mortality, which has been observed on all vegetated continents in the past few decades [5–8] despite relatively modest changes in drought to date [9]. The response of the biosphere to climate extremes is one of the dominant uncertainties in the large spread of models around the fate of the terrestrial carbon sink in the 21<sup>st</sup> century [7,10].

Yet mechanisms of plant drought response in global vegetation models are relatively simple and are in large part determined by leaf-level responses of stomata to environmental drivers [11,12]. Despite much progress in the past several decades [13–20], full mechanistic understanding of stomatal function remains incomplete, and thus many ecosystem models use empirical stomatal algorithms derived from leaf-level gas exchange [21–23], often during wet soil conditions. A growing number of ecosystem models include supply-side water limitation through simulating plant hydraulic transport and water potential [24–29], and thus it is likely to be instructive to test models that simulate leaf water potential against the standard empirical models [28]. Considering common empirical models, the Ball-Berry-Leuning is perhaps the most widely used empirical stomatal conductance model and gives stomatal conductance as a simple function of photosynthetic rate, atmospheric carbon dioxide concentration, and either relative humidity or vapor pressure deficit (VPD) [21,23]. Tuzet et al. propose a key modification of the Ball-Berry-Leuning model where the VPD dependence of stomatal conductance is replaced by a sigmoidal response to plant water potential [30]. Medlyn et al. derive a model similar to the Ball-Berry-Leuning model by optimizing carbon gain for a given water lost per the classic Cowan-Farquhar theory [31], leading to a model that is more interpretable but with largely the same functional dependencies on photosynthesis, CO<sub>2</sub> concentrations, and VPD [32,33]. Finally, a recent study proposed a new empirical model based off an alternate optimization strategy for stomata—that stomata maximize carbon gain minus the costs of hydraulic damage—that is consistent with plant competition for water and includes both a VPD and leaf water potential sensitivity [34].

These empirical stomatal conductance models tend to perform remarkably well in lab experiments and also reasonably well during short-term periods of water stress, but have rarely been tested during severe or long-term (e.g. weeks to years) drought [3,35]. Also, models based on the theoretical predictions from the Cowan & Farquhar formulation [31] of optimal stomatal behavior are challenging to implement in ecosystem models. This is because the marginal water cost of carbon (often termed  $\lambda$ ) is observed to vary widely and non-linearly within a single species in response to soil water stress [36–38]. One piece of evidence that the classical empirical models may not be adequate during drought is that, with recent exceptions of models with water transport [26,29], most large-scale ecosystem models include a rarely-tested soil moisture stress function, that shuts stomata as soil water potential falls [39–41].

Decades of research have detailed that stomata respond to leaf water potential directly [13,42–44]. Temporal variation in leaf water potential is influenced both by VPD and soil water potential, and the functional form of stomatal response to leaf water potential differs distinctly between these two drivers and across species [28]. Indeed, the stomatal response to leaf water potential is likely one of the central elements of a plant's drought response strategy [44–49]. The water potential sensitivity of stomata is predicted to be tightly coupled to species' xylem anatomy and the xylem's vulnerability to cavitation [28,37,48,50]. Xylem traits will thus influence a plant's stomatal strategy and the coupled hydraulic-stomatal continuum is likely to be critical in predicting which plants might be vulnerable to drought-induced tree mortality [11,51–53]. It is increasingly apparent that some representation of plant hydraulics and its

effects on stomata will be needed to capture the manifold and species-specific impacts of climate change-driven droughts [26,29,35,48,53].

In this paper, we compile datasets of stomatal conductance in response to varying environmental conditions and leaf water potential from 34 woody plant species around the world to ask: 1) What is the marginal dependence of stomatal conductance on leaf water potential, after factoring out the VPD and photosynthetic changes, which would help constrain the soil moisture function in ecosystem models? 2) How well do existing stomatal conductance models perform during drought and are there systematic biases at high leaf temperatures, high vapor pressure deficits or low soil water potentials? 3) Does a stomatal model that builds on current empirical models but includes the marginal effect of leaf water potential improve prediction of stomatal conductance, both overall and also during dry conditions?

## Methods

### Gas exchange and water potential datasets

We performed an extensive literature search to identify studies that contained both measurements of stomatal conductance ( $g_s$ ) and its driving variables and leaf water potential. To be considered, a study needed to include: 1) direct measurements of  $g_s$  through gas exchange (e.g. Li-COR 6400) or porometry methods, 2) measurement of atmospheric  $\text{CO}_2$  concentrations concurrently, 3) measurement of VPD (using either air temperature or leaf temperature), and 4) concurrent measurements of twig or leaf water potential. We drew upon a recent synthesis of  $g_s$  datasets from around the world [33] for those containing leaf water potential measurements. We next contacted researchers who had published in this area to ask for recommendations of relevant studies and datasets. Finally, we performed a suite of literature searches through Google Scholar and ISI Web of Science using various permutations of “stomatal conductance,” “gas exchange,” “water relations,” “water potential,” “drought,” and “stomatal behavior.” We included only studies by authors who generously agreed to share their raw measurements because this allowed a much greater sample size per species (critical for partial dependency and model selection analyses—see below) than the use of published means.

In the end, we obtained datasets on 34 species from around the world (Table 1; Table A in S1 File) from 15 studies. All species were C3 plants, including 6 gymnosperms and 28 angiosperms from tropical, temperate, and boreal regions. Datasets from 9 species came from studies of potted trees, while 25 were from trees grown and measured in field conditions. All species except 3 recorded either midday water potential or water potential concurrent with stomatal conductance measurements. The remaining 3 species had only measurements of pre-dawn water potential, which was used in place of midday water potential (*Quercus ilex*, *Populus balsamifera*, *Pistacia lentiscus*) to account for soil moisture's effects on stomatal conductance. Twenty-four species had concurrent measurements of assimilation. Almost all datasets ( $N = 32$  species) covered dry conditions where substantial water stress occurred, as evidenced by water potential measurements that would cause greater than 10% embolism based on published xylem cavitation vulnerability curves for these species (Weibull-functions consistent with the water potentials at which 50% and 88% of stem hydraulic conductivity is lost). Xylem trait values were drawn either from the study itself ( $N = 8$  spp) or the Xylem Functional Traits dataset [54]. We used this xylem vulnerability curve to calculate the percent loss in stem hydraulic conductivity at the most negative leaf water potential observed in the dataset. While transpiration-induced disequilibrium between leaf and stem water potential could potentially lead to artificially high estimates of losses in conductivity, we believe that this is likely minimal because transpiration rates should have been minimal at the most negative leaf water potentials.

**Table 1. Species included in the study, their Akaike information criterion (AIC) values and R<sup>2</sup> values during model selection.** Species with no values were not included in the model selection analyses because photosynthesis was not measured directly (but were included in the RandomForest analyses). In AIC values, bolded values indicate that a given model for a species was the most likely (delta-AIC > 3) for that species. Models include the Medlyn (M), Ball-Berry-Leuning (BBL), Ball-Berry-Leuning with hydraulic addition (BBL.H) and Tuzet (T) models (see [Methods](#)).

Species	AIC M	AIC BBL	AIC BBL.H	AIC T	R <sup>2</sup> M	R <sup>2</sup> BBL	R <sup>2</sup> BBL.H	R <sup>2</sup> T
<i>Acer campestre</i>	-154.82	-156.95	-159.49	-161.50	0.82	0.84	0.86	0.86
<i>Acer pseudoplatanus</i>	-141.70	-146.76	-143.21	-135.57	0.75	0.79	0.79	0.73
<i>Alphitonia excelsa</i>	-271.80	-281.04	<b>-309.06</b>	-294.86	0.55	0.58	0.65	0.62
<i>Anacardium excelsum</i>								
<i>Annona hayesii</i>	-102.38	-105.33	-108.61	-110.81	0.29	0.36	0.46	0.46
<i>Astronium graveolens</i>								
<i>Austromyrtus bidwillii</i>	-154.10	-153.27	-151.46	-147.90	0.44	0.46	0.49	0.41
<i>Brachychiton australis</i>	-193.88	-193.56	-189.56	-184.38	0.40	0.41	0.41	0.37
<i>Bursera simaruba</i>								
<i>Carpinus betulus</i>	-186.73	-188.61	-184.61	-186.60	0.73	0.75	0.75	0.75
<i>Cavanillesia platanifolia</i>								
<i>Cochlospermum gillivraei</i>	-198.96	-206.95	-202.95	-208.78	0.52	0.58	0.58	0.60
<i>Cojoba rufescens</i>								
<i>Cordia alliodora</i>								
<i>Corylus avellana</i>	-143.78	-142.27	-151.20	-151.20	0.85	0.85	0.90	0.89
<i>Eucalyptus globulus</i>	-97.66	-108.44	-115.23	-61.15	0.80	0.83	0.86	0.69
<i>Ficus insipida</i>								
<i>Fraxinus excelsior</i>	-158.03	-156.81	-154.81	-147.64	0.85	0.85	0.86	0.82
<i>Genipa americana</i>								
<i>Juniperus monosperma</i>	-3171.58	-3429.01	<b>-3554.22</b>	-3516.62	0.77	0.85	0.88	0.87
<i>Juniperus osteosperma</i>	-203.74	-200.21	-208.29	<b>-211.93</b>	0.73	0.72	0.80	0.81
<i>Phillyrea angustifolia</i>	-66.91	-72.63	<b>-75.82</b>	-69.79	0.67	0.79	0.86	0.78
<i>Picea abies</i>	-1311.60	-1308.62	-1304.60	-1293.58	0.41	0.40	0.40	0.39
<i>Pinus edulis</i>	-3159.62	-3235.26	<b>-3259.00</b>	-3196.97	0.79	0.82	0.83	0.81
<i>Pinus ponderosa</i>	-627.43	-627.59	-624.32	-601.72	0.74	0.74	0.74	0.69
<i>Pistacia lentiscus</i>	-107.76	-106.70	-102.70	-102.72	0.72	0.73	0.73	0.71
<i>Populus balsamifera</i>	-52.23	-50.38	-52.31	-54.30	0.49	0.49	0.59	0.59
<i>Populus tremuloides</i>	-162.46	-172.74	-171.55	-143.60	0.42	0.56	0.59	0.18
<i>Prosopis velutina</i>	<b>-65.55</b>	-62.42	-59.45	-60.28	0.42	0.40	0.42	0.40
<i>Quercus douglasii</i>	-393.15	-440.33	-437.75	-405.41	0.67	0.76	0.76	0.70
<i>Quercus gambelii</i>	-66.83	-67.64	-63.64	<b>-73.89</b>	0.90	0.92	0.92	0.96
<i>Quercus ilex</i>	-648.62	-646.21	-642.21	-648.10	0.91	0.91	0.91	0.91
<i>Schefflera morototoni</i>								
<i>Tapirira guianensis</i>								

<https://doi.org/10.1371/journal.pone.0185481.t001>

### Partial dependence analyses

To quantify the partial dependence of stomatal conductance on leaf water potential—i.e. the marginal effect of leaf water potential when other potential co-drivers, such as photosynthesis, VPD, and atmospheric CO<sub>2</sub> concentrations are held constant—we used the RandomForest machine learning algorithm [55]. In essence, this marginal curve reflects the partial dependency of g<sub>s</sub> on soil water potential, all else constant. This algorithm uses bootstrapped subsamples of the full dataset to perform regression tree analysis on a large number (N = 500) of trees, which are then aggregated. We chose this algorithm because 1) it performs well among machine-learning algorithms, 2) it makes no assumptions around the distribution (e.g.

normality) of the input data, 3) it makes no assumptions on the functional form of the relationship between independent and dependent variables (e.g. linear, non-linear, etc), and 4) it can handle interactions between independent variables [55,56].

For each species, a RandomForest model was fit using 500 regression trees and a minimum node size of 5 (i.e. nodes cannot be split if they have fewer than 5 observations). Each model simulated stomatal conductance as a function of leaf water potential, vapor pressure deficit, assimilation, and atmospheric CO<sub>2</sub> concentrations. We excluded species that had fewer than three measurements of leaf water potential (N = 5 species), as this would not allow accurate reconstruction of the partial dependence on leaf water potential. For the 10 species without assimilation measurements, we modeled assimilation using the Farquhar et al. [57] photosynthesis model for the RandomForest analysis only using the “plantecophys” package in the R statistical software. The RandomForest algorithm yields an estimate of out-of-bag prediction error, which quantifies model performance on subsets of the data on which the model was not trained. Next, we isolated the marginal effect of leaf water potential while holding other independent variables constant via a partial dependency analysis on the RandomForest model. To standardize comparison of the marginal effect of leaf water potential curves on species with different stomatal conductance ranges and different degrees of water stress, we re-scaled each marginal curve to the degree of stomatal closure that occurred for each species during water-stressed conditions (i.e. scaling between highest measured g<sub>s</sub> and lowest measured g<sub>s</sub> when light and atmospheric CO<sub>2</sub> were high). Thus, if a species was observed to have maximum g<sub>s</sub> values of 100 mmol\*m<sup>-2</sup>\*s<sup>-1</sup> and minimum g<sub>s</sub> values during water-stressed conditions of 40 mmol\*m<sup>-2</sup>\*s<sup>-1</sup>, that species’ partial dependency curve was scaled between 0.4 and 1.

### Comparison of stomatal algorithms

On the 24 species subset that had direct measurements of assimilation, we compared the predictive accuracy of four stomatal algorithms during all conditions and during dry conditions with low soil water potentials. The algorithms were: 1) the optimal-empirical model described in Medlyn et al. [32]:

$$g_s = 1.6 * \frac{A}{C_s} * \left( 1 + \frac{g_1}{\sqrt{D}} \right) \tag{1}$$

where A is photosynthesis, C<sub>s</sub> is CO<sub>2</sub> concentration at the leaf surface, D is VPD, and g<sub>1</sub> is a species-specific parameter; 2) the standard Ball-Berry-Leuning model, but excluding the g<sub>0</sub> term, as in [32,33]:

$$g_s = \frac{\alpha A}{(C_s - \Gamma^*) \left( 1 + \frac{D}{d_1} \right)} \tag{2}$$

where Γ\* is the CO<sub>2</sub> compensation point and α and d<sub>1</sub> are species-specific parameters; 3) the Tuzet et al. update of the Ball-Berry-Leuning where the VPD dependence is replaced by a leaf water potential sigmoidal curve, fit here as a Weibull function, due to its flexibility and widespread observations of Weibull forms in xylem conductivity functions:

$$g_s = \frac{\alpha A * e^{-\left(\frac{\psi}{\tau}\right)^b}}{(C_s - \Gamma^*)} \tag{3}$$

where c and b are species-specific parameters and ψ is leaf water potential. And 4) the initial Ball-Berry-Leuning model combined with a Weibull sensitivity to leaf water potential, which is a recent variant proposed by [34] which derives the model similar to Medlyn et al. [32] but

from a carbon maximization optimization, rather than the classical marginal water use efficiency optimization:

$$g_s = \frac{\propto A * e^{-\left(\frac{\psi}{\tau}\right)^b}}{(C_s - \Gamma^*) \left(1 + \frac{D}{d_1}\right)} \quad (4)$$

We note that Eq 4 is a combined model of Eqs 2 and 3. We emphasize that the first two models account for only atmospheric effects (VPD and leaf surface CO<sub>2</sub> concentration) on stomatal conductance while the third and fourth models begin to include soil moisture stress through leaf water potential. We used a Nelder-Mead optimization algorithm to find the best parameters for each model that minimized the sum of squared errors between the predicted and observed stomatal conductance. Because this method is most effective at finding local minima, we initiated each species from multiple initial conditions to ensure that the algorithm had found the global minima. This algorithm finds the best parameters that fit the entire dataset of stomatal conductance for each species and model combination.

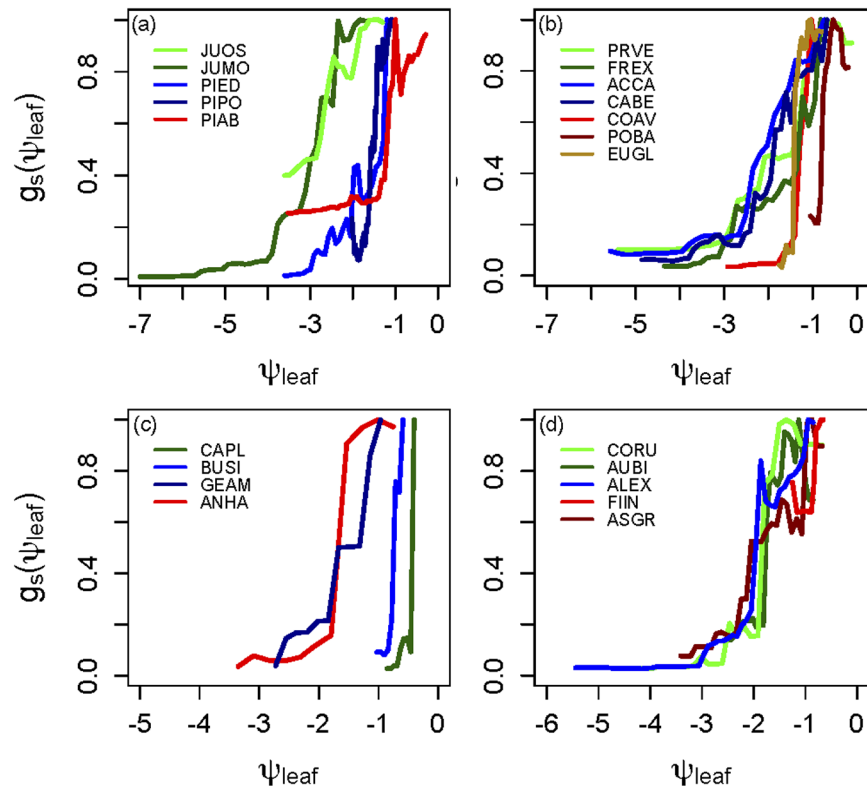
Because the stomatal models have different numbers of parameters, we performed model selection with the R<sup>2</sup> and the root-mean-squared error (RMSE) of the model and the Akaike information criterion (AIC). AIC allows inference on the relative quality of statistical models by estimating the information lost by different models, while accounting for different numbers of parameters between models. The combination of these three metrics allows quantification of the relative improvement in predictive power (e.g. % change in R<sup>2</sup> or RMSE) and standardized model selection among models with different numbers of parameters. AIC differences between models provide inference in the relative likelihood of a given model, with differences of >3 generally considered to be evidence for choosing one model over another [58]. We tested for any potential biases of collinearity between VPD and leaf water potential through two methods: 1) comparing the AIC improvement in models with both variables (Eq 4) to the correlation between the two variables and 2) using variance inflation factors from multiple linear regressions involving all variables.

To quantify potential biases during dry conditions, we examined the residuals of the predicted versus observed stomatal conductance of each model for each species. We performed linear regression on the residuals compared to leaf temperature, VPD, and predawn plant water potential as a proxy for soil water potential. A statistically significant slope indicates that there is indeed a persistent bias in prediction of stomatal conductance at one or both ends of the predictor variable. We quantified the degree of bias by looking both at the slope of these regressions and, more critically for drought conditions, calculating the % over or under prediction of each model on each species during dry soil conditions, defined as the 10th percentile of soil water potentials.

## Results

### Stomatal dependence on leaf water potential

The RandomForest algorithm produced models with strong predictive power (mean R<sup>2</sup> = 0.62), approaching that of the standard stomatal conductance models (mean R<sup>2</sup> = 0.65–71), and also partial dependencies against assimilation, CO<sub>2</sub> and VPD that are directly consistent with those represented in the standard empirical stomatal conductance models (see Fig A-C in S1 File for representative species). This provides high confidence that the machine learning algorithm generated robust, meaningful, and interpretable results and similarly implies empirical confidence in the structural form of the equations in the models. The marginal dependence of stomatal conductance on leaf water potential, when holding VPD constant (i.e.



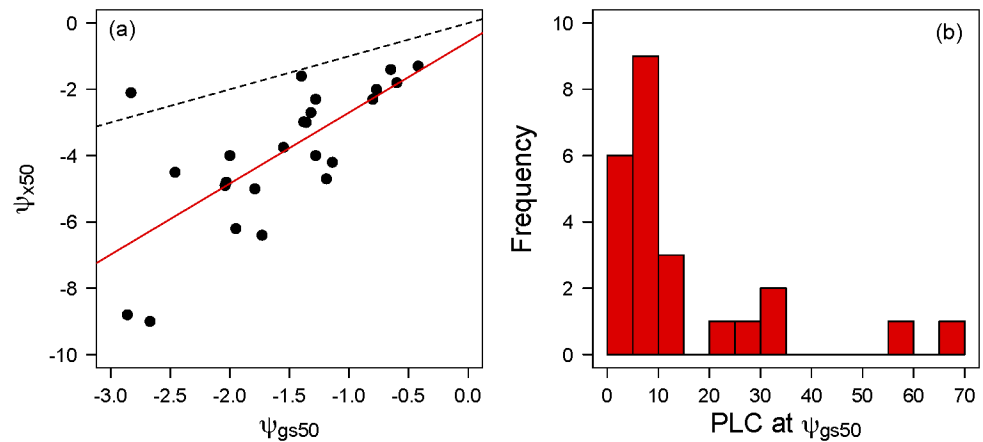
**Fig 1. Partial dependency of stomatal conductance ( $g_s$ ) on measured leaf water potential ( $\psi_{leaf}$ ) in (a) temperate gymnosperm species, (b) temperate angiosperm species, (c) tropical deciduous species, and (d) tropical evergreen species.** Y-axis values are scaled from 0–1 by the percentage of stomatal closure reached. Species codes are the first two letters of the genus and the first two letters of the species from Table A in S1 File.

<https://doi.org/10.1371/journal.pone.0185481.g001>

stomatal sensitivity to soil water potential-driven changes in leaf water potential), most closely resembled a Weibull curve for most species (Fig 1). This partial dependence curve was interpretable and consistent with the expected relationship (either Weibull, sigmoidal, or negative-exponential) for 26 of 29 species. For the remaining 3 species, the curves fluctuated erratically (Fig D in S1 File) and these species were not included in comparisons of species such as the one in Fig 2.

Species displayed systematic variance in their soil moisture stress-driven  $g_s(\psi_{leaf})$  curves that are consistent with their documented drought response strategies. For example, in temperate gymnosperm species, the two pine species (*Pinus edulis* and *Pinus ponderosa*) considered to be largely isohydric showed rapid reduction in  $g_s$  with falling leaf water potentials, while the two juniper species (*Juniperus monosperma* and *Juniperus osteosperma*) observed to be largely anisohydric [59] showed much delayed and less sensitive  $g_s$  regulation with declining water potentials (Fig 1a). In addition, physiologically similar species showed similar  $g_s(\psi_{leaf})$  responses even with only partial water stress observed in some cases. For example, *Juniperus osteosperma* only experienced modest water stress with ~50% declines in  $g_s$  but its  $g_s(\psi_{leaf})$  largely followed that of the similar *Juniperus monosperma* that experienced much more severe water stress.

Species showed a strong relationship between stomatal regulation in response to water potential and xylem characteristics. There was a significant relationship between the water potential at 50% stomatal conductance loss driven by soil moisture stress and that at 50% stem



**Fig 2.** (a) Relationship across species between the water potential at which 50% of stomatal conductance is lost ( $\psi_{gs50}$ ) and the water potential at which 50% of stem hydraulic conductance ( $\psi_{x50}$ ) is lost. Black line is the 1:1 line and red the OLR regression best fit. (b) Histogram of the percent loss of stem hydraulic conductance (PLC) at the water potential at which 50% of stomatal conductance is lost ( $\psi_{gs50}$ ).

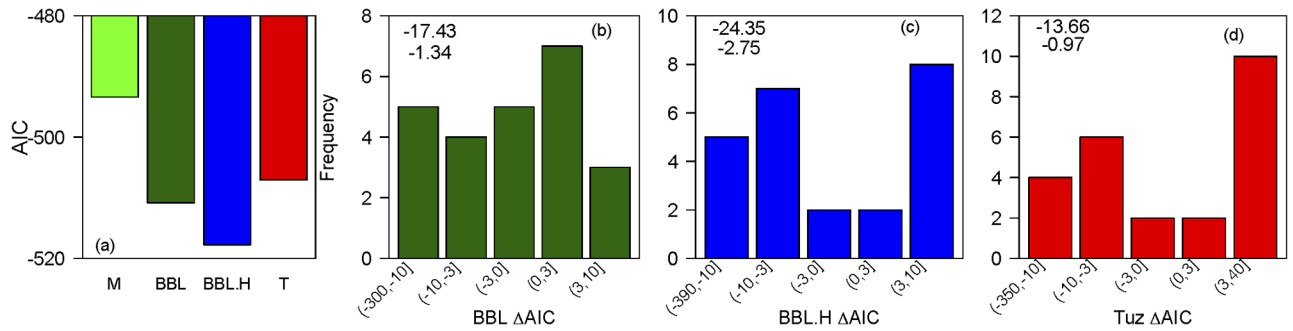
<https://doi.org/10.1371/journal.pone.0185481.g002>

xylem hydraulic conductance loss ( $R^2 = 0.49$ ,  $t = 4.6$ ,  $p < 0.0001$ ) (Fig 2a). Because these two curves have a similar functional form—Weibull curves for most species—comparison of their midpoints also gives a sense of the relative offset between them. Both the slope of the relationship and that all species except one fell below the 1:1 line indicates that in most species stomatal conductance is down-regulated well-before substantial (e.g. 50%) embolism occurs in the stem xylem [60] (Fig 2a). Thus, the percent loss of stem hydraulic conductivity that occurs at the  $\psi_{gs50}$  point is under 15% for most species (mean: 14.9%; median: 9.1%) (Fig 2b), with the most prominent exception being *Quercus douglasii*. *Quercus douglasii* was the only species in our sample with an R-shaped xylem vulnerability curve [61], and this should be interpreted with caution because the data came from a study on seedlings whereas the gas exchange and water potential data used here was measured on mature trees.

### Comparison of stomatal algorithms

Model selection analysis revealed that the Ball-Berry-Leuning model with the hydraulic addition (BBL.H) was selected as the most likely model for most species with a large AIC signal (Fig 3a; Table 1). The Ball-Berry-Leuning model with the hydraulic addition had a mean AIC difference of -24.3 from the Medlyn model, -10.3 from the Tuzet model, and -7.9 from the standard Ball-Berry-Leuning model, giving its relative likelihood of being the “best” model (that minimizes information loss) of  $>0.999$ ,  $>0.997$ , and 0.984 respectively (Fig 3a). These mean differences, however, were partially influenced by a few species with very large improvements in the BBL.H, and thus the median differences were less stark but still showed the same pattern (Fig 3b–3d). Considering species separately, AIC differences revealed significant differences among the models in 33% of the species (8 of 24) (Table 1). Assuming the standard rule-of-thumb that AIC differences of  $>3$  are considered grounds for preference of one model over another [58], the BBL.H model was the most likely model for 62.5% (5/8) of the species where one model was unequivocally the most likely, with the Tuzet model most likely for 25% (2/8) and the Medlyn model for 12.5% (1/8) (Table 1). Collinearity between VPD and leaf water potential is unlikely to have driven the increased predictive ability of the BBL.H model because we observed no correlation between the AIC differences and VPD- $\psi_{leaf}$  correlation across species ( $p = 0.71$ ) and all species’ variance inflation factors were  $<3$ , which indicates little risk of



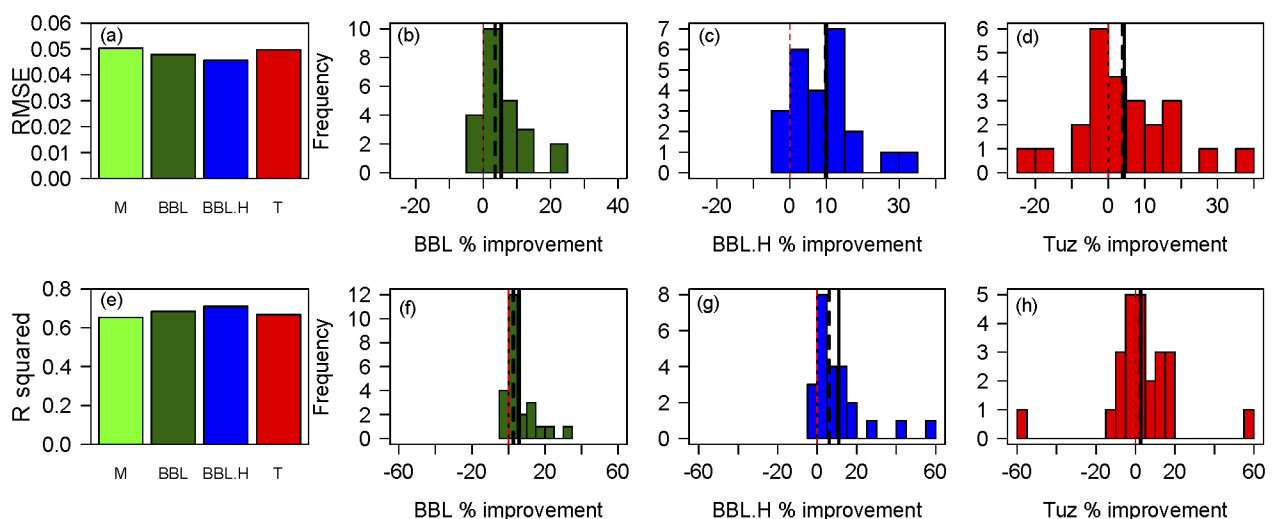


**Fig 3.** (a) Akaike Information Criterion (AIC) value average across all 24 species for the Medlyn (M), Ball-Berry-Leuning (BBL), Ball-Berry-Leuning plus Hydraulics (BBL.H), and Tuzet (T) stomatal conductance models. (b) Frequency of species' delta-AIC values between the BBL and M models. (c) Frequency of species' delta-AIC values between the BBLH and M models. (d) Frequency of species' delta-AIC values between the T and M models. In each of (b-d), the top number is the mean delta-AIC across all species and the lower number is the median delta-AIC.

<https://doi.org/10.1371/journal.pone.0185481.g003>

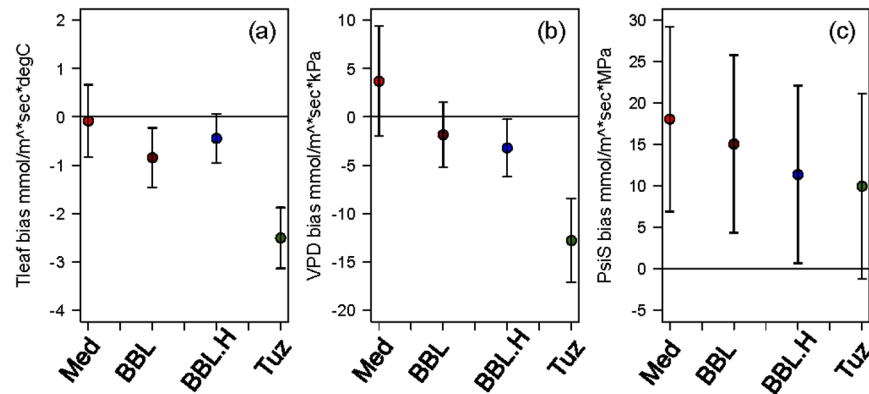
collinearity in predictor variables ( $VIF > 10$  is generally considered large collinearity requiring correction) [62]. Further, we saw no evidence of correlations among model parameters ( $p > 0.2$  in all cases).

Predictive differences between the four models revealed the same pattern that, while all models performed relatively well, the BBL.H model had consistently lower RMSE values and higher  $R^2$  values (Fig 4a and 4e). Compared to the model with the lowest predictive ability, the BBL.H model showed a 6–11% improvement in  $R^2$  and RMSE (Fig 4c and 4g) and a ~5% improvement over the second best model, the standard BBL model (Table 1). Species varied substantially in their improvements in predictive power, with several species having a >30% increase in predictive power in the BBL.H model. The AIC analysis reveals that the improvements in predictive power were usually statistically significant and thus not just a consequence of an additional parameter. Considering all three metrics, we observe strong evidence that the



**Fig 4.** (a) Root mean squared error (RMSE) and (e) OLS regression  $R^2$  between predicted and observed stomatal conductance averaged across all 24 species for the Medlyn (M), Ball-Berry-Leuning (BBL), Ball-Berry-Leuning plus Hydraulics (BBL.H), and Tuzet (T) stomatal conductance models. (b and f) Frequency of species' % improvement in RMSE and  $R^2$  respectively between the BBL and M models. (c and g) Frequency of species' % improvement in RMSE and  $R^2$  respectively between the BBLH and M models. (d and h) Frequency of species' % improvement in RMSE and  $R^2$  respectively between the T and M models.

<https://doi.org/10.1371/journal.pone.0185481.g004>



**Fig 5. (a) Slope between the residuals of observed versus predicted stomatal conductance and leaf temperature (Tleaf), (b) vapor pressure deficit (VPD), and (c) soil water potential (PsiS).** Negative values in the Tleaf and VPD plots indicate over-prediction of  $g_s$  during dry conditions (high Tleaf and high VPD), whereas positive values in the PsiS plot indicates over-prediction of  $g_s$  during dry conditions. Models are Medlyn (red), Ball-Berry-Leuning (darkred), Ball-Berry-Leuning plus the hydraulic term (blue) and Tuzet (green). Error bars are  $\pm 1$  S.E.

<https://doi.org/10.1371/journal.pone.0185481.g005>

BBL.H model performs significantly better in the majority of species, with the standard BBL model and the Tuzet model performing roughly equally well as second-best models.

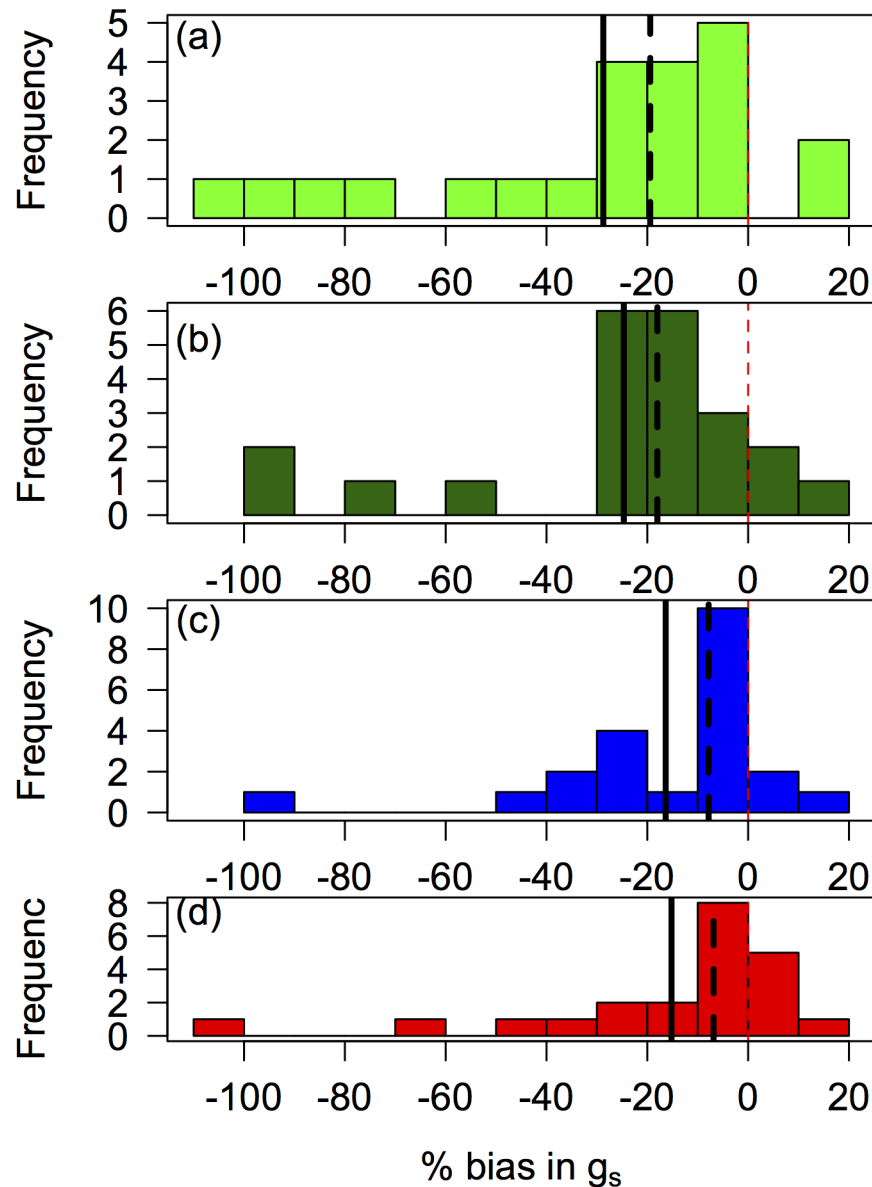
### Performance during drought conditions

The residuals of the predicted-versus-observed  $g_s$  regressions show that many of the models are biased because they overpredict stomatal conductance during conditions of low soil water potential, high VPD, and high  $T_{leaf}$  (Fig 5). For the response of stomatal aperture to VPD and  $T_{leaf}$ , the Tuzet model had the largest bias, while the Medlyn, BBL, and BBL.H had relatively low biases. For soil water potential, the largest biases were observed in the Medlyn model, with the BBL and BBL.H models as intermediate, and the lowest biases in the Tuzet model. We note that because all models' parameters were optimized using all data for each species, that even the "best fit" model that includes dry conditions still tends to overpredict  $g_s$  in these conditions. This is likely because there are generally more  $g_s$  measurements during wet/benign periods in most datasets and minimizing the larger absolute errors at high  $g_s$  values would tend to be favored by parameter fitting algorithms. However, focusing prediction error at drier periods in the dataset could have an attendant trade-off of less accurate prediction during wetter periods.

For all models, the largest biases occurred during periods of low soil moisture (Fig 6). Considering the 10<sup>th</sup> percentile of soil water potential, the Medlyn model overpredicted  $g_s$  by an average of 28.7% (median: 19.4%); the BBL model overpredicted by an average of 24.7% (median: 18%); and the BBL.H and Tuzet models overpredicted by an average of 16.4% and 15.2% (medians: 7.8% and 6.9%) respectively (Fig 6). Thus, the BBL.H and Tuzet model greatly reduced the biases during dry soils by 40–50%, although not removing the bias altogether, and the Tuzet model showed higher bias at high VPDs.

### Discussion

We show here that inclusion of leaf water potential in stomatal conductance models both improves their predictive power and substantially reduces the biases observed during dry conditions in the current standard empirical models. The observed prevalence of Weibull-shaped functions in the partial dependency of  $g_s$  on leaf water potential strongly agrees with the



**Fig 6. Histogram of species' percent bias in prediction of stomatal conductance at the 10<sup>th</sup> percentile of soil water potential.** Negative numbers mean over-prediction of  $g_s$  by models compared to measured values. Solid line is the mean across species and dashed line the median. Models are (a) Medlyn model, (b) Ball-Berry-Leuning model, (c) Ball-Berry-Leuning plus Hydraulics model, and (d) Tuzet model.

<https://doi.org/10.1371/journal.pone.0185481.g006>

published curves using dry-down or dehydration experiments [44] and this curve arises from the fundamental water transport equations [34]. This partial dependency analysis provides empirical support for the functional form of soil moisture stress on stomatal conductance and can guide the formulation of these functions in ecosystem models. The shape of the  $g_s(\psi_{leaf})$  driven by soil moisture stress likely arises distinctly from the xylem vulnerability curve shape and the marginal cost of opening stomata [34,63]. Our results further confirm that a Weibull-like (or sigmoidal) function is most appropriate for incorporation into empirical stomatal models, although future research will be needed to determine the degree to which  $g_s(\psi_{leaf})$  curves vary within species across populations, environmental gradients, and seasons or years.

Even relatively “fixed” hydraulic traits, such as the water potential at 50% loss of stem hydraulic conductance, show fairly substantial within-species variation, with larger variation in angiosperms than gymnosperms [64].

In addition, the diversity in  $g_s(\psi_{\text{leaf}})$  curves of trees from different biomes (Fig 1) reveals that there is likely a wide diversity of stomatal strategies found in most biomes across the world. This diversity of  $g_s(\psi_{\text{leaf}})$  curves is visible in the wettest tropical forest species measured here (e.g. Fig 1c) and in the driest woodland with only two species (*Pinus edulis-Juniperus monosperma*) (Fig 1a). This may have important implications for land-atmosphere interactions, particularly during droughts. Current vegetation models have only one set of stomatal conductance parameters per plant functional type (and parameters are often identical across plant functional types) [33], which implies a need for a greater range of hydraulically-defined plant functional types. If diversity in plant stomatal and hydraulic strategies is prevalent in many ecosystems, ecosystem response to water deficits could be fundamentally different than what would be predicted by ecosystem models.

Our estimation of the  $g_s(\psi_{\text{leaf}})$  curves also shows a strong coupling between stomatal responses to water stress and xylem vulnerability to cavitation (Fig 2a). This coupling has been documented in other studies [48,60,65,66] and highlights the critical linkages between plant water transport and gas exchange responses to water stress. Comparison between stomatal and xylem curves also emphasizes that most plants curtail stomatal conductance at xylem water potentials well above the corresponding  $\psi_{x50}$ . This is strongly consistent with much research indicating that plants regulate stomata partially to manage hydraulic damage [43,44,48,67] and avoid the fitness consequences incurred by low water potential, including decreased growth and increased mortality rates [53,68–70]. Furthermore, Fig 2a highlights two useful axes of drought response strategies. The first is the widely recognized shifts in xylem vulnerability ( $\psi_{x50}$ ; y axis of Fig 2a) across ecosystems with aridity [54,71,72]. The second highlights the gap between the  $g_s(\psi_{\text{leaf}})$  curve and the xylem vulnerability curve (regression line and spread around it in Fig 2a), representing a risky-versus-conservative difference in strategy, where more rapid  $g_s$  closure as  $\psi_{\text{leaf}}$  falls would be a “conservative” strategy to avoid embolism.

We observed evidence that including leaf water potential in the standard empirical models of stomatal conductance increased predictive power in the majority of the 33% of species where detectable differences occurred between stomatal models. Perhaps more importantly, including leaf water potential decreased overprediction biases during dry conditions. Because the functional forms of the BBL, Tuzet, and BBL.H model are identical aside from their treatment of drought responses, we can draw the inference that including both VPD and leaf water potential was the most likely model across all species, with the BBL (VPD only) and Tuzet (water potential only) models having roughly similar, but less accurate, predictive ability. Why would including both VPD and water potential improve predictive power? This is likely because mixing of outside air (and its VPD) with the vapor pressure in the substomatal pore indicates that the effective water potential that stomata “sense” is likely some weighted average of the two that varies with stomatal aperture [14,18,73].

Our results reveal the importance of considering plant water transport and hydraulics in simulation of carbon and water fluxes in models and emphasize that empirical models that include leaf water potential like those tested here or even more detailed mechanistic models [14,16,18] have promising potential to improve predictions. The documented over-prediction of  $g_s$  at the leaf level during drought conditions may occur at ecosystem scales or may be currently crudely accounted for using the “soil moisture stress” function present in most ecosystem models, which to our knowledge has not been tested against data in most models. We posit that including leaf water potential in the empirical stomatal model (e.g. BBL.H presented here) would allow replacing of this previous equation, higher parsimony, and higher fidelity to

the widely documented mechanism of leaf water potential's effect on stomatal conductance. Indeed, dynamic simulation of water potential from climate and edaphic data and plant hydraulic traits is now possible [12,24–29] and reproduces stomatal response to water deficits with remarkable accuracy [28]. Furthermore, many of the key hydraulic traits—such as the xylem vulnerability curve—are known for a diversity of species across many biomes [64,72]. Ultimately, linking of plant hydraulics and stomatal conductance will enable improved prediction of plant responses to climate extremes in a rapidly changing climate.

## Supporting information

**S1 File. Supporting information document contains Table A and Figures A-D.**  
(DOCX)

## Acknowledgments

WRLA was supported in part by NSF DEB 1714972. We appreciate the assistance from Marion Feifel in collecting data of leaf photosynthetic parameters of five European tree species.

## Author Contributions

**Conceptualization:** William R. L. Anderegg, Adam Wolf, John S. Sperry, Stephen Pacala.

**Data curation:** Adriana Arango-Velez, Brendan Choat, Daniel J. Chmura, Steven Jansen, Thomas Kolb, Shan Li, Frederick Meinzer, Pilar Pita, Víctor Resco de Dios, Brett T. Wolfe.

**Formal analysis:** William R. L. Anderegg.

**Funding acquisition:** Stephen Pacala.

**Investigation:** William R. L. Anderegg.

**Methodology:** William R. L. Anderegg.

**Resources:** Adriana Arango-Velez, Brendan Choat, Daniel J. Chmura, Steven Jansen, Thomas Kolb, Shan Li, Frederick Meinzer, Pilar Pita, Víctor Resco de Dios, Brett T. Wolfe.

**Supervision:** Stephen Pacala.

**Writing – original draft:** William R. L. Anderegg.

**Writing – review & editing:** William R. L. Anderegg, Adam Wolf, Adriana Arango-Velez, Daniel J. Chmura, Steven Jansen, Thomas Kolb, Shan Li, Frederick Meinzer, Pilar Pita, Víctor Resco de Dios, John S. Sperry, Brett T. Wolfe, Stephen Pacala.

## References

1. Dai A. Drought under global warming: a review. *Wiley Interdiscip Rev Clim Change*. 2011; 2: 45–65.
2. IPCC. Managing the Risks of Extreme Events and Disasters to Advance Climate Change Adaptation. A Special Report of Working Groups I and II of the Intergovernmental Panel on Climate Change. Cambridge, United Kingdom, and New York, NY, USA: Cambridge University Press; 2012.
3. Anderegg LDL, Anderegg WRL, Berry JA. Not all droughts are created equal: translating meteorological drought into woody plant mortality. *Tree Physiol*. 2013; 33: 672–683.
4. Williams AP, Allen CD, Macalady AK, Griffin D, Woodhouse CA, Meko DM, et al. Temperature as a potent driver of regional forest drought stress and tree mortality. *Nat Clim Change*. 2013; 3: 292–297. <http://www.nature.com/nclimate/journal/v3/n3/abs/nclimate1693.html#supplementary-information>
5. Ciais P, Reichstein M, Viovy N, Granier A, Ogee J, Allard V, et al. Europe-wide reduction in primary productivity caused by the heat and drought in 2003. *Nature*. 2005; 437: 529–533. <http://www.nature.com/>

- [nature/journal/v437/n7058/supinfo/nature03972\\_S1.html](https://doi.org/10.1371/journal.pone.0185481.g001) <https://doi.org/10.1038/nature03972> PMID: 16177786
6. Anderegg WRL, Kane JM, Anderegg LDL. Consequences of widespread tree mortality triggered by drought and temperature stress. *Nat Clim Change*. 2013; 3: 30–36.
  7. Reichstein M, Bahn M, Ciais P, Frank D, Mahecha MD, Seneviratne SI, et al. Climate extremes and the carbon cycle. *Nature*. 2013; 500: 287–295. <https://doi.org/10.1038/nature12350> PMID: 23955228
  8. Allen CD, Macalady AK, Chenchouni H, Bachelet D, McDowell N, Vennetier M, et al. A global overview of drought and heat-induced tree mortality reveals emerging climate change risks for forests. *For Ecol Manag*. 2010; 259: 660–684. <https://doi.org/10.1016/j.foreco.2009.09.001>
  9. Sheffield J, Wood EF, Roderick ML. Little change in global drought over the past 60 years. *Nature*. 2012; 491: 435–438. <http://www.nature.com/nature/journal/v491/n7424/abs/nature11575.html#supplementary-information> <https://doi.org/10.1038/nature11575> PMID: 23151587
  10. Frank D, Reichstein M, Bahn M, Thonicke K, Frank D, Mahecha MD, et al. Effects of climate extremes on the terrestrial carbon cycle: concepts, processes and potential future impacts. *Glob Change Biol*. 2015; <http://onlinelibrary.wiley.com/doi/10.1111/gcb.12916/full>
  11. McDowell NG, Beerling DJ, Breshears DD, Fisher RA, Raffa KF, Stitt M. The interdependence of mechanisms underlying climate-driven vegetation mortality. *Trends Ecol Evol*. 2011; 26: 523–532. <https://doi.org/10.1016/j.tree.2011.06.003> PMID: 21802765
  12. Powell TL, Galbraith DR, Christoffersen BO, Harper A, Imbuzeiro H, Rowland L, et al. Confronting model predictions of carbon fluxes with measurements of Amazon forests subjected to experimental drought. *New Phytol*. 2013; 200: 350–365. <https://doi.org/10.1111/nph.12390> PMID: 23844931
  13. Franks PJ, Cowan IR, Farquhar GD. A study of stomatal mechanics using the cell pressure probe. *Plant Cell Environ*. 1998; 21: 94–100. <https://doi.org/10.1046/j.1365-3040.1998.00248.x>
  14. Buckley TN, Mott KA, Farquhar GD. A hydromechanical and biochemical model of stomatal conductance. *Plant Cell Environ*. 2003; 26: 1767–1785.
  15. Shope JC, Peak D, Mott KA. Stomatal responses to humidity in isolated epidermes. *Plant Cell Environ*. 2008; 31: 1290–1298. <https://doi.org/10.1111/j.1365-3040.2008.01844.x> PMID: 18541007
  16. Peak D, Mott KA. A new, vapour-phase mechanism for stomatal responses to humidity and temperature. *Plant Cell Environ*. 2011; 34: 162–178. <https://doi.org/10.1111/j.1365-3040.2010.02234.x> PMID: 20880202
  17. Buckley TN, Mott KA. Modelling stomatal conductance in response to environmental factors. *Plant Cell Environ*. 2013; 36: 1691–1699. <https://doi.org/10.1111/pce.12140> PMID: 23730938
  18. Mott KA, Peak D. Testing a vapour-phase model of stomatal responses to humidity. *Plant Cell Environ*. 2013; 36: 936–944. <https://doi.org/10.1111/pce.12026> PMID: 23072325
  19. Dow GJ, Bergmann DC, Berry JA. An integrated model of stomatal development and leaf physiology. *New Phytol*. 2014; 201: 1218–1226. <https://doi.org/10.1111/nph.12608> PMID: 24251982
  20. Buckley TN. Stomatal responses to humidity: has the ‘black box’ finally been opened? *Plant Cell Environ*. 2016; 39: 482–484. <https://doi.org/10.1111/pce.12651> PMID: 26485479
  21. Ball JT, Woodrow IE, Berry JA. A model predicting stomatal conductance and its contribution to the control of photosynthesis under different environmental conditions. *Progress in photosynthesis research*. Springer; 1987. pp. 221–224. [http://link.springer.com/chapter/10.1007/978-94-017-0519-6\\_48](http://link.springer.com/chapter/10.1007/978-94-017-0519-6_48)
  22. Collatz GJ, Ball JT, Grivet C, Berry JA. Physiological and environmental regulation of stomatal conductance, photosynthesis and transpiration: a model that includes a laminar boundary layer. *Agric For Meteorol*. 1991; 54: 107–136.
  23. Leuning R. A critical appraisal of a combined stomatal-photosynthesis model for C3 plants. *Plant Cell Environ*. 1995; 18: 339–355.
  24. Hickler T, Prentice IC, Smith B, Sykes MT, Zaehle S. Implementing plant hydraulic architecture within the LPJ Dynamic Global Vegetation Model. *Glob Ecol Biogeogr*. 2006; 15: 567–577.
  25. Bonan G, Williams M, Fisher R, Oleson K. Modeling stomatal conductance in the Earth system: linking leaf water-use efficiency and water transport along the soil-plant-atmosphere continuum. *Geosci Model Dev Discuss*. 2014; 7: 3085–3159.
  26. Mackay DS, Roberts DE, Ewers BE, Sperry JS, McDowell NG, Pockman WT. Interdependence of chronic hydraulic dysfunction and canopy processes can improve integrated models of tree response to drought. *Water Resour Res*. 2015; <http://onlinelibrary.wiley.com/doi/10.1002/2015WR017244/full>
  27. Christoffersen BO, Gloor M, Fauset S, Fyllas NM, Galbraith DR, Baker TR, et al. Linking hydraulic traits to tropical forest function in a size-structured and trait-driven model (TFS v. 1-Hydro). *Geosci Model Dev*. 2016; 9: 4227.

28. Sperry JS, Wang Y, Wolfe BT, Mackay DS, Anderegg WR, McDowell NG, et al. Pragmatic hydraulic theory predicts stomatal responses to climatic water deficits. *New Phytol.* 2016; <http://onlinelibrary.wiley.com/doi/10.1111/nph.14059/full>
29. Xu X, Medvigy D, Powers JS, Becknell JM, Guan K. Diversity in plant hydraulic traits explains seasonal and inter-annual variations of vegetation dynamics in seasonally dry tropical forests. *New Phytol.* 2016; <http://onlinelibrary.wiley.com/doi/10.1111/nph.14009/full>
30. Tuzet A, Perrier A, Leuning R. A coupled model of stomatal conductance, photosynthesis and transpiration. *Plant Cell Environ.* 2003; 26: 1097–1116.
31. Cowan IR, Farquhar GD. Stomatal function in relation to leaf metabolism and environment. *Symposia of the Society for Experimental Biology.* 1977. p. 471. Available: <http://www.ncbi.nlm.nih.gov/pubmed/756635>
32. Medlyn BE, Duursma RA, Eamus D, Ellsworth DS, Prentice IC, Barton CVM, et al. Reconciling the optimal and empirical approaches to modelling stomatal conductance. *Glob Change Biol.* 2011; 17: 2134–2144. <https://doi.org/10.1111/j.1365-2486.2010.02375.x>
33. Lin Y-S, Medlyn BE, Duursma RA, Prentice IC, Wang H, Baig S, et al. Optimal stomatal behaviour around the world. *Nat Clim Change.* 2015; 5: 459–464.
34. Wolf A, Anderegg WR, Pacala SW. Optimal stomatal behavior with competition for water and risk of hydraulic impairment. *Proc Natl Acad Sci.* 2016; 113: E7222–E7230. <https://doi.org/10.1073/pnas.1615144113> PMID: 27799540
35. Sperry JS, Love DM. What plant hydraulics can tell us about responses to climate-change droughts. *New Phytol.* 2015; <http://onlinelibrary.wiley.com/doi/10.1111/nph.13354/full>
36. Thomas DS, Eamus D, Bell D. Optimization theory of stomatal behaviour II. Stomatal responses of several tree species of north Australia to changes in light, soil and atmospheric water content and temperature. *J Exp Bot.* 1999; 50: 393–400.
37. Manzoni S, Vico G, Katul G, Fay PA, Polley W, Palmroth S, et al. Optimizing stomatal conductance for maximum carbon gain under water stress: a meta-analysis across plant functional types and climates. *Funct Ecol.* 2011; 25: 456–467.
38. Hérault A, LIN Y-S, Bourne A, Medlyn BE, Ellsworth DS. Optimal stomatal conductance in relation to photosynthesis in climatically contrasting Eucalyptus species under drought. *Plant Cell Environ.* 2013; 36: 262–274. <https://doi.org/10.1111/j.1365-3040.2012.02570.x> PMID: 22762345
39. Sellers PJ, Randall DA, Collatz GJ, Berry JA, Field CB, Dazlich DA, et al. A Revised Land Surface Parameterization (SiB2) for Atmospheric GCMS. Part I: Model Formulation. *J Clim.* 1996; 9: 676–705. [https://doi.org/10.1175/1520-0442\(1996\)009<0676:arlspf>2.0.co;2](https://doi.org/10.1175/1520-0442(1996)009<0676:arlspf>2.0.co;2)
40. Oleson KW, Lawrence DM, Gordon B, Flanner MG, Kluzek E, Peter J, et al. Technical description of version 4.0 of the Community Land Model (CLM). 2010; <http://citeseeerx.ist.psu.edu/viewdoc/summary?doi=10.1.1.172.7769>
41. Best MJ, Pryor M, Clark DB, Rooney GG, Essery R, Ménard CB, et al. The Joint UK Land Environment Simulator (JULES), model description—Part 1: energy and water fluxes. *Geosci Model Dev.* 2011; 4: 677–699.
42. Schulze E-D, Hall AE. Stomatal responses, water loss and CO<sub>2</sub> assimilation rates of plants in contrasting environments. *Physiological plant ecology II.* Springer; 1982. pp. 181–230. [http://link.springer.com/chapter/10.1007/978-3-642-68150-9\\_8](http://link.springer.com/chapter/10.1007/978-3-642-68150-9_8)
43. Brodribb T, Holbrook N, Edwards E, Gutierrez M. Relations between stomatal closure, leaf turgor and xylem vulnerability in eight tropical dry forest trees. *Plant Cell Environ.* 2003; 26: 443–450.
44. Klein T. The variability of stomatal sensitivity to leaf water potential across tree species indicates a continuum between isohydric and anisohydric behaviours. *Funct Ecol.* 2014; 28: 1313–1320.
45. Brodribb TJ, Holbrook NM. Stomatal protection against hydraulic failure: a comparison of coexisting ferns and angiosperms. *New Phytol.* 2004; 162: 663–670.
46. Brodribb TJ, McAdam SA, Jordan GJ, Martins SC. Conifer species adapt to low-rainfall climates by following one of two divergent pathways. *Proc Natl Acad Sci.* 2014; 111: 14489–14493. <https://doi.org/10.1073/pnas.1407930111> PMID: 25246559
47. Brodribb TJ, McAdam SA, Carins Murphy MR. Xylem and Stomata, Coordinated Through Time and Space. *Plant Cell Environ.* 2016; <http://onlinelibrary.wiley.com/doi/10.1111/pce.12817/full>
48. Martínez-Vilalta J, Poyatos R, Aguadé D, Retana J, Mencuccini M. A new look at water transport regulation in plants. *New Phytol.* 2014; 204: 105–115. <https://doi.org/10.1111/nph.12912> PMID: 24985503
49. Meinzer FC, Woodruff DR, Marias DE, Smith DD, McCulloh KA, Howard AR, et al. Mapping 'hydroscapes' along the iso- to anisohydric continuum of stomatal regulation of plant water status. *Ecol Lett.* 2016; 19: 1343–1352. <https://doi.org/10.1111/ele.12670> PMID: 27604411

50. Meinzer FC, Johnson DM, Lachenbruch B, McCulloh KA, Woodruff DR. Xylem hydraulic safety margins in woody plants: coordination of stomatal control of xylem tension with hydraulic capacitance. *Funct Ecol.* 2009; 23: 922–930.
51. Mitchell PJ, O'Grady AP, Tissue DT, White DA, Ottenschlaeger ML, Pinkard EA. Drought response strategies define the relative contributions of hydraulic dysfunction and carbohydrate depletion during tree mortality. *New Phytol.* 2013; 197: 862–872. <https://doi.org/10.1111/nph.12064> PMID: 23228042
52. Anderegg W RL, Alan Flint, Huang Cho-ying, Flint Lorraine, Berry Joseph, Davis Frank, et al. Tree mortality predicted from drought-induced vascular damage. *Nat Geosci.* 2015; 8: 367–371.
53. Anderegg WR, Klein T, Bartlett M, Sack L, Pellegrini AF, Choat B, et al. Meta-analysis reveals that hydraulic traits explain cross-species patterns of drought-induced tree mortality across the globe. *Proc Natl Acad Sci.* 2016.
54. Gleason SM, Westoby M, Jansen S, Choat B, Hacke UG, Pratt RB, et al. Weak tradeoff between xylem safety and xylem-specific hydraulic efficiency across the world's woody plant species. *New Phytol.* 2015; 209: 123–136. <https://doi.org/10.1111/nph.13646> PMID: 26378984
55. Breiman L. Random forests. *Mach Learn.* 2001; 45: 5–32.
56. Liaw A, Wiener M. Classification and regression by randomForest. *R News.* 2002; 2: 18–22.
57. Farquhar GD, Caemmerer S, Berry JA. A biochemical model of photosynthetic CO<sub>2</sub> assimilation in leaves of C<sub>3</sub> species. *Planta.* 1980; 149: 78–90. <https://doi.org/10.1007/bf00386231> PMID: 24306196
58. Burnham KP, Anderson DR. Multimodel inference understanding AIC and BIC in model selection. *Sociol Methods Res.* 2004; 33: 261–304.
59. West AG, Hultine KR, Sperry JS, Bush SE, Ehleringer JR. Transpiration and Hydraulic Strategies in a Piñon-Juniper Woodland. *Ecol Appl.* 2008; 18: 911–927. PMID: 18536252
60. Bartlett MK, Klein T, Jansen S, Choat B, Sack L. The correlations and sequence of plant stomatal, hydraulic, and wilting responses to drought. *Proc Natl Acad Sci.* 2016; 113: 13098–13103. <https://doi.org/10.1073/pnas.1604088113> PMID: 27807136
61. Jansen S, Schuldt B, Choat B. Current controversies and challenges in applying plant hydraulic techniques. *New Phytol.* 2015; 205: 961–964. <https://doi.org/10.1111/nph.13229> PMID: 25580652
62. Allison PD. Multiple regression: A primer [Internet]. Pine Forge Press; 1999. <https://books.google.com/books?hl=en&lr=&id=20tgP-Wr4QMC&oi=fnd&pg=PR13&dq=multiple+regression+allison&ots=KbJnYkP85B&sig=8XgOM1Wl94B5fgPUlqgQUjsjhXw>
63. Sperry JS, Venturas MD, Anderegg WR, Mencuccini M, Mackay DS, Wang Y, et al. Predicting stomatal responses to the environment from the optimization of photosynthetic gain and hydraulic cost. *Plant Cell Environ.* 2016; <http://onlinelibrary.wiley.com/doi/10.1111/pce.12852/full>
64. Anderegg WR. Spatial and temporal variation in plant hydraulic traits and their relevance for climate change impacts on vegetation. *New Phytol.* 2015; 205: 1008–1014. PMID: 25729797
65. Manzoni S, Vico G, Katul G, Palmroth S, Jackson RB, Porporato A. Hydraulic limits on maximum plant transpiration and the emergence of the safety—efficiency trade-off. *New Phytol.* 2013; 198: 169–178. <https://doi.org/10.1111/nph.12126> PMID: 23356378
66. Zhou S, Duursma RA, Medlyn BE, Kelly JW, Prentice IC. How should we model plant responses to drought? An analysis of stomatal and non-stomatal responses to water stress. *Agric For Meteorol.* 2013; 182: 204–214.
67. Sperry JS, Hacke UG, Oren R, Comstock JP. Water deficits and hydraulic limits to leaf water supply. *Plant Cell Environ.* 2002; 25: 251–263. <https://doi.org/10.1046/j.0016-8025.2001.00799.x> PMID: 11841668
68. Hoffmann WA, Marchin RM, Abit P, Lau OL. Hydraulic failure and tree dieback are associated with high wood density in a temperate forest under extreme drought. *Glob Change Biol.* 2011; 17: 2731–2742. <https://doi.org/10.1111/j.1365-2486.2011.02401.x>
69. Nardini A, Battistuzzo M, Savi T. Shoot desiccation and hydraulic failure in temperate woody angiosperms during an extreme summer drought. *New Phytol.* 2013; 200: 322–329. <https://doi.org/10.1111/nph.12288> PMID: 23593942
70. Anderegg WRL, Schwalm C, Biondi F, Camarero JJ, Koch G, Litvak M, et al. Pervasive drought legacies in forest ecosystems and their implications for carbon cycle models. *Science.* 2015; 349: 528–532. <https://doi.org/10.1126/science.aab1833> PMID: 26228147
71. Maherali H, Pockman WT, Jackson RB. Adaptive variation in the vulnerability of woody plants to xylem cavitation. *Ecology.* 2004; 85: 2184–2199. <https://doi.org/10.1890/02-0538>
72. Choat B, Jansen S, Brodrigg TJ, Cochard H, Delzon S, Bhaskar R, et al. Global convergence in the vulnerability of forests to drought. *Nature.* 2012; 491: 752–755. <http://www.nature.com/nature/journal/>



v491/n7426/abs/nature11688.html#supplementary-information <https://doi.org/10.1038/nature11688>  
PMID: 23172141

73. Buckley TN. The control of stomata by water balance. *New Phytol.* 2005; 168: 275–292. <https://doi.org/10.1111/j.1469-8137.2005.01543.x> PMID: 16219068