

# Type II-Activated Murine Macrophages Produce IL-4

Anne Camille La Flamme<sup>1,2\*</sup>, Marie Kharkrang<sup>1</sup>, Sarrabeth Stone<sup>1</sup>, Sara Mirmoeini<sup>1</sup>, Delgertsetseg Chuluundorj<sup>1</sup>, Ryan Kyle<sup>2</sup>

<sup>1</sup> School of Biological Sciences, Victoria University of Wellington, Wellington, New Zealand, <sup>2</sup> Malaghan Institute of Medical Research, Wellington, New Zealand

## Abstract

**Background:** Type II activation of macrophages is known to support Th2 responses development; however, the role of Th2 cytokines (esp. IL-4) on type II activation is unknown. To assess whether the central Th2 cytokine IL-4 can alter type II activation of macrophages, we compared the ability of bone marrow-derived macrophages from wild type (WT) and IL-4R $\alpha$ -deficient mice to be classically or type II-activated *in vitro*.

**Results:** We found that although both WT and IL-4R $\alpha$ -deficient macrophages could be classically activated by LPS or type II activated by immune complexes plus LPS, IL-4R $\alpha$ -deficient macrophages consistently produced much higher levels of IL-12p40 and IL-10 than WT macrophages. Additionally, we discovered that type II macrophages from both strains were capable of producing IL-4; however, this IL-4 was not responsible for the reduced IL-12p40 and IL-10 levels produced by WT mice. Instead, we found that derivation culture conditions (GM-CSF plus IL-3 versus M-CSF) could explain the different responses of BALB/c and IL-4R $\alpha$ -/- macrophages, and these cytokines shaped the ensuing macrophage such that GM-CSF plus IL-3 promoted more IL-12 and IL-4 while M-CSF led to higher IL-10 production. Finally, we found that enhanced IL-4 production is characteristic of the type II activation state as other type II-activating products showed similar results.

**Conclusions:** Taken together, these results implicate type II activated macrophages as an important innate immune source of IL-4 that may play an important role in shaping adaptive immune responses.

**Citation:** La Flamme AC, Kharkrang M, Stone S, Mirmoeini S, Chuluundorj D, et al. (2012) Type II-Activated Murine Macrophages Produce IL-4. PLoS ONE 7(10): e46989. doi:10.1371/journal.pone.0046989

**Editor:** Stefan Bereswill, Charité-University Medicine Berlin, Germany

**Received:** April 11, 2012; **Accepted:** September 7, 2012; **Published:** October 5, 2012

**Copyright:** © 2012 La Flamme et al. This is an open-access article distributed under the terms of the Creative Commons Attribution License, which permits unrestricted use, distribution, and reproduction in any medium, provided the original author and source are credited.

**Funding:** This work was supported by a grant from the Neurological Foundation of New Zealand (0828-PG). The funders had no role in study design, data collection and analysis, decision to publish, or preparation of the manuscript.

**Competing Interests:** The authors have declared that no competing interests exist.

\* E-mail: anne.laflamme@vuw.ac.nz

## Introduction

Macrophages can become activated by a variety of different products and signals [1]. One of the most commonly used macrophage activating products is lipopolysaccharide (LPS), the major outer membrane component of gram negative bacteria, and this microbial product classically activates macrophages into producing high levels of pro-inflammatory mediators such as IL-12, TNF- $\alpha$ , and IL-6 [2] and enhance the expression of CD40, PD-L1, CD86, and iNOS [3,4]. This phenotype can promote the differentiation of naïve CD4 T cells into Th1 cells and has been shown to be protective during microbial infections and detrimental during specific inflammatory disease models such as EAE [1]. In contrast to classical activation, macrophages that are exposed to immune complexes (i.e. opsonized antigen; IC) in a pro-inflammatory environment (such as in the presence of LPS) become type II-activated [5]. These macrophages produce less IL-12 and significantly more IL-10 than classical macrophages while producing similar levels of TNF- $\alpha$  and NO [6]. Although the expression of CD40 and PD-L1 are significantly reduced, type II-activated macrophages are effective antigen-presenting cells and promote the development of Th2 cells both *in vitro* and *in vivo* [3,7,8]. This activation state can impair anti-microbial effector functions but has been shown to protect against pathology in pro-inflammatory disease models such as EAE and septic shock. Our

previous work has shown that this activation state is protective during EAE, and this protection is dependent upon IL-4 [8]. However, it is unknown how the Th2 environment, promoted by type II-activated macrophages, is induced nor how this environment, once induced, affects the macrophage's effector functions. To this end, we investigated if and how signaling through the major Th2 cytokine receptor IL-4R $\alpha$  affected type II macrophage activation.

## Results and Discussion

### Bone Marrow-derived Macrophages Deficient in IL-4R $\alpha$ Show Enhanced Classical and Type II Activation Compared to WT Macrophages

When IFN- $\gamma$ -primed macrophages are stimulated by the TLR4 agonist LPS, they become classically activated and produce high levels of IL-12 [3]. In contrast, if Fc $\gamma$ Rs are ligated by immune complexes (IC) in addition to TLR4 activation, macrophages are type II-activated and preferentially produce IL-10 [3]. Because type II-activated macrophages have been shown to promote Th2 responses *in vitro* and *in vivo*, we investigated the role of the key Th2 cytokine, IL-4, in classical and type II activation. Using BMM $\phi$  from wild type (WT) and IL-4R $\alpha$ -/- BALB/c mice, we compared the requirement for IL-4R $\alpha$  signaling in activation. We found that both WT and IL-4R $\alpha$ -/- BMM $\phi$  were able to

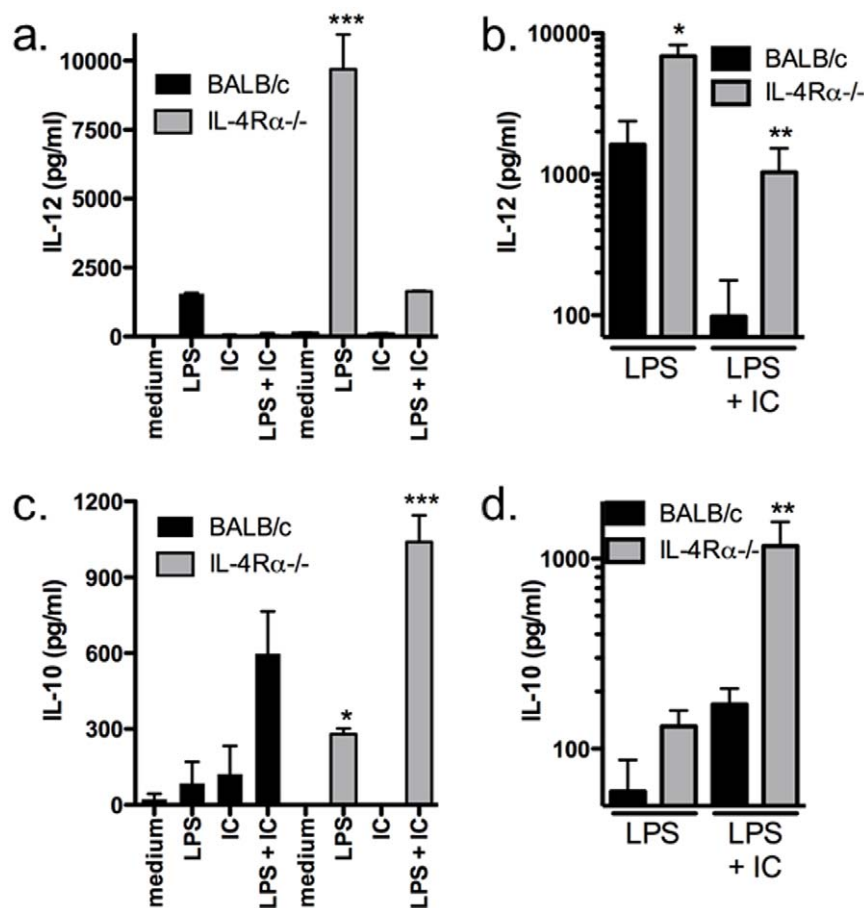
become classically or type II-activated as shown by the IL-12 and IL-10 cytokine profiles (Figure 1). However, BMM $\phi$  deficient in IL-4R $\alpha$  were found to produce significantly more IL-12 and IL-10 suggesting that signals through the IL-4R $\alpha$  are involved in regulating the cytokine production of both classical and type II-activated macrophages.

### IL-4 is Produced by Type II Macrophages

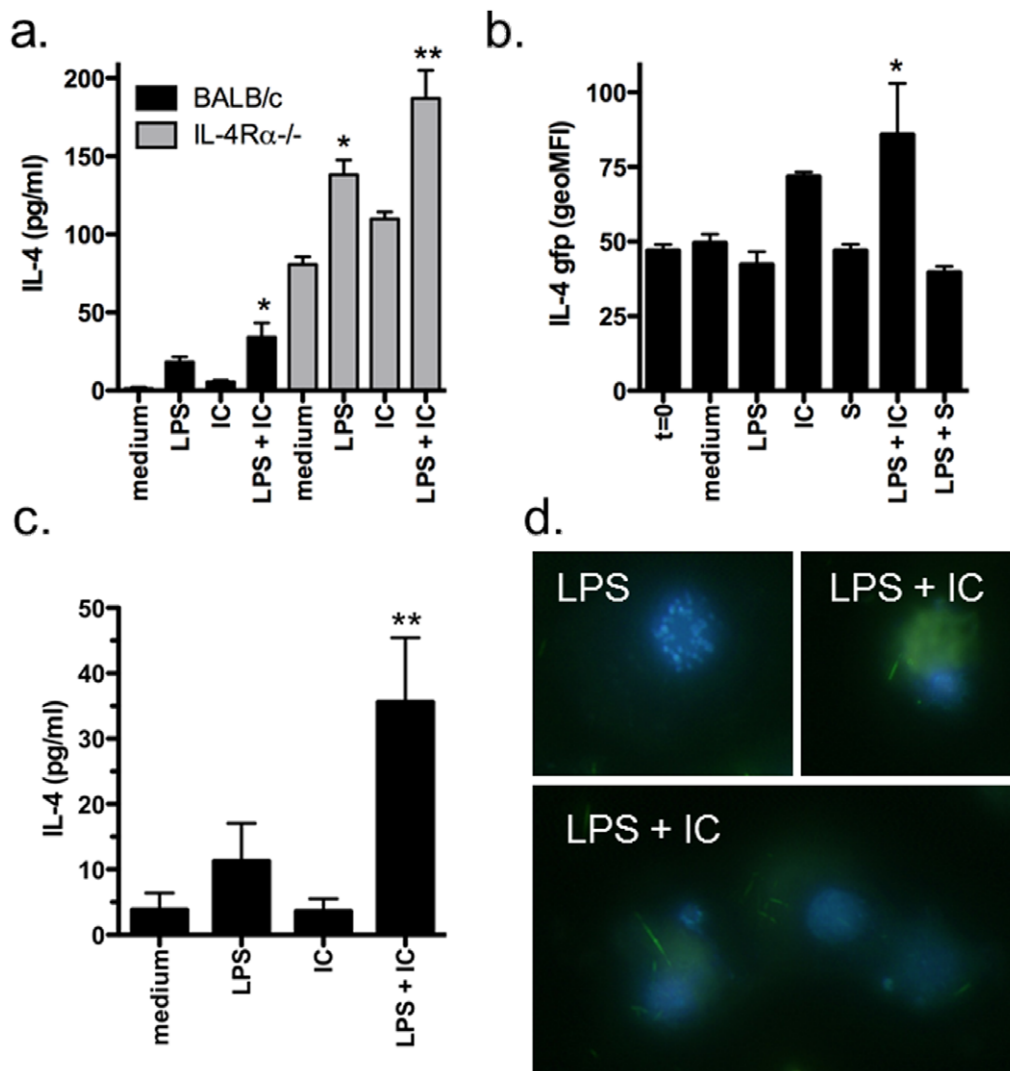
A previous study reported the production of IL-4 by LPS-stimulated macrophages and found that at later time points (i.e. 24–48 hours) significant IL-4 was detected in the culture supernatants of stimulated macrophages [9]. Additionally IL-13, which also signals through IL-4R $\alpha$ , has been reported to be produced by alveolar macrophages under specific conditions [10]. Thus to determine if IL-4 or IL-13 were produced after type II activation, we assessed IL-4 and IL-13 production by BMM $\phi$  from WT and IL-4R $\alpha$ -deficient mice. In agreement with previous work, we found low levels of IL-4 were detected after stimulation of WT BMM $\phi$  with LPS, and this level increased upon type II activation (Figure 2a; black bars) and was detectable as early as 8 hours post stimulation (Figure S1). BMM $\phi$  from IL-4R $\alpha$ -deficient animals produced far greater amounts of IL-4 than WT BMM $\phi$  (Figure 2a; grey bars), and this increase may reflect the build up of cytokine in

the supernatant due to the absence of receptor uptake. In contrast to IL-4, we did not detect any increased production of IL-13 after classical or type II activation (Figure S2).

To verify that the IL-4 was a product of macrophages and not the presence of another cell type that remained after isolation, we assessed IL-4 production by flow cytometry using BMM $\phi$  from mice, which produce GFP under the IL-4 promoter (i.e. G4 mice) [11]. Using these mice, it was found that type II (LPS + IC) but not classical (LPS) activation induced IL-4 production and that the cytokine was produced by cells co-expressing CD11b and F4/80 (Figure 2b and c and Figure 3). Additionally, when cells from these cultures were examined by immunofluorescent microscopy, the IL-4-producing GFP<sup>+</sup> cells were clearly mononuclear and displayed macrophage-like morphology (Figure 2d). Finally, using the IL-4-GFP mice, we observed that opsonized SRBC (immune complexes; IC) but not unopsonized SBRC (S) appeared to stimulate similar levels of IL-4 production as type II activation (LPS + IC), suggesting that the enhanced IL-4 production was not solely due to type II activation but may result from Fc $\gamma$ R ligation. Interestingly, this enhanced IL-4 production by IC stimulation alone was not evident in our culture supernatants (Figure 2c). One possible explanation is that GFP production



**Figure 1. Type II-activated BMM $\phi$  from IL-4R $\alpha$ -deficient mice produce significantly more IL-12p40 and IL-10 than WT BALB/c BMM $\phi$ .** IFN- $\gamma$ -primed BMM $\phi$  ( $10^5$ /well) from WT and IL-4R $\alpha$ -deficient mice were stimulated with LPS (10 ng/ml) in the presence or absence of opsonized SRBC (IC) for 24 hours. Cytokine production was measured in culture supernatants by ELISA. Shown are the means and SEM of triplicate wells from 1 of 3 experiments (a and c) or combined results from 4 experiments (b and d). \*\*\*p < 0.001 compared to all other groups. \*\*p < 0.01 (b & d) LPS versus LPS + IC and (d) BALB/c versus IL-4R $\alpha$ -/-, \*p < 0.05 (c) LPS versus medium or IC or (b) BALB/c versus IL-4R $\alpha$ -/-, All p values were calculated by one-way ANOVA with Bonferroni's post-test. doi:10.1371/journal.pone.0046989.g001



**Figure 2. Type II-activated macrophages produce IL-4.** (a) IFN- $\gamma$ -primed BMM $\phi$  ( $10^5$ /well) from WT and IL-4R $\alpha$ -deficient mice were stimulated with LPS (10 ng/ml) in the presence or absence of opsonized SRBC (IC) for 24 hours. Cytokine production was measured in culture supernatants by ELISA. Shown are the means and SEM of triplicate wells from 1 of 3 experiments. \* $p < 0.05$  compared to medium and \*\* $p < 0.001$  compared to medium or IC. (b–d) IFN- $\gamma$ -primed BMM $\phi$  ( $10^5$ /well) from heterozygous G4 mice were stimulated with LPS (10 ng/ml) in the presence or absence of opsonized SRBC (IC) for 24 hours. IL-4 production by F4/80+ macrophages was assessed by flow cytometry (b), ELISA (c), or by fluorescence microscopy (d). IL-4-GFP is found intracellularly after LPS + IC (2 examples shown) but not LPS stimulation in DAPI-counterstained macrophages. Shown are the means and SEM from 3 experiments (b) or representative data from 1 of 3 experiments (c and d). \* $p < 0.05$  compared to t=0 and \*\* $p < 0.01$  compared to medium by Dunnett's Multiple Comparison Test. doi:10.1371/journal.pone.0046989.g002

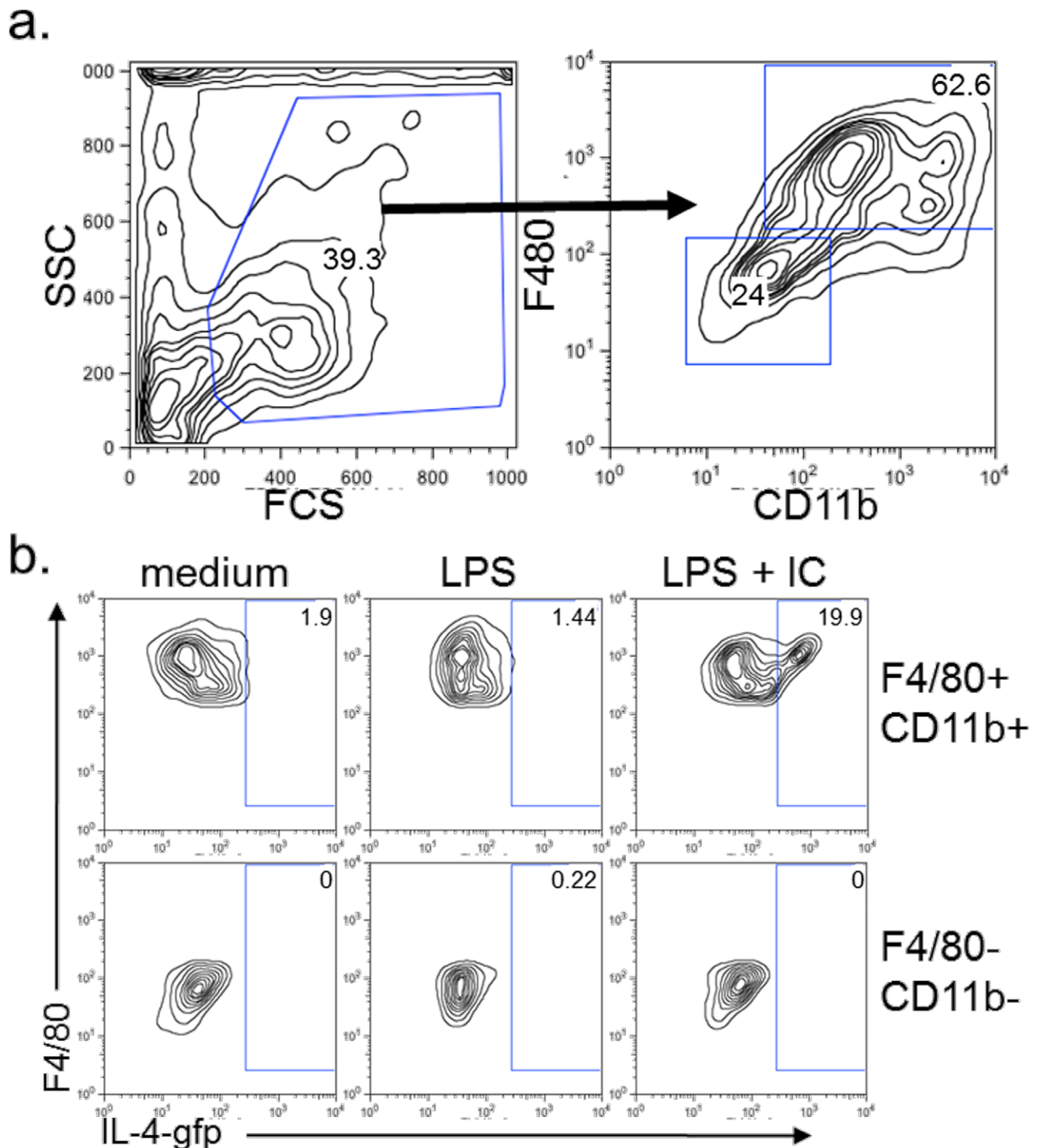
reaches a maximum threshold above which difference in expression levels cannot be distinguished. Alternatively, because the levels in the supernatant can be regulated by receptor binding, the difference between the two assays may reflect alteration in production versus uptake.

To determine if the macrophages were responding to the IL-4 in an autocrine fashion, CD124 (IL-4R $\alpha$ ) expression was assessed on classically and type II-activated BMM $\phi$  by flow cytometry. The levels of CD124 expression on BMM $\phi$  were detectable after type II activation but the levels were extremely low (Figure S3). However, when exogenous IL-4 (3 ng/ml) was added to the cultures, the levels of IL-4 detected after 8 hours were significantly reduced in BMM $\phi$  cultures from WT but not IL-4R $\alpha$ -deficient mice indicating that if produced, IL-4 can be taken up by these macrophages (Figure 4c). Overall, these data suggest that the IL-4

produced by type II or IC-stimulated macrophages may signal in an autocrine fashion and contribute to regulating downstream macrophage effector functions.

#### Type II Activation of Macrophages is Independent of IL-4

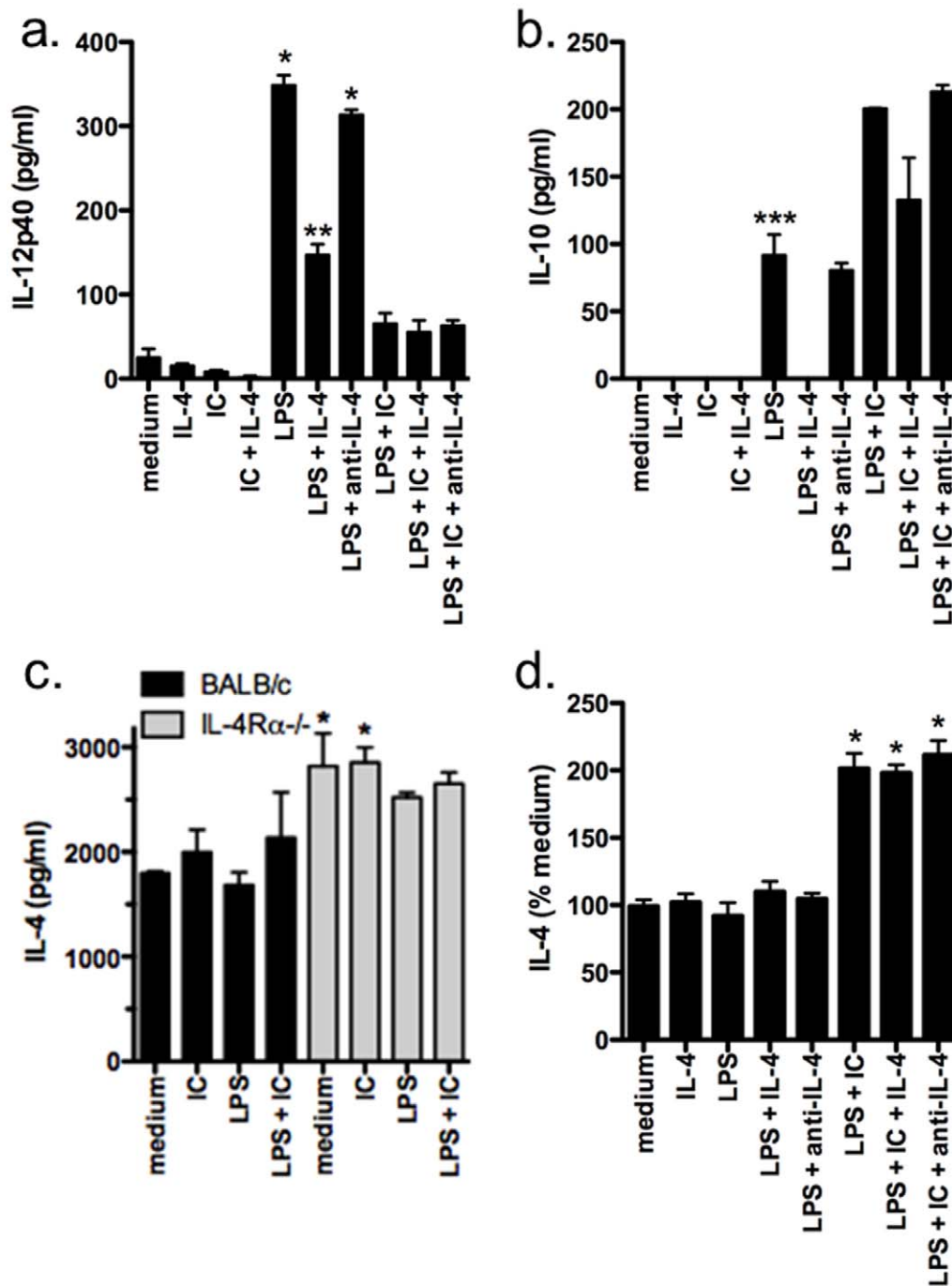
Given that IL-4 is produced and taken up by its signaling receptor (IL-4R $\alpha$ ), we assessed how IL-4 could contribute to the type II activation phenotype and cytokine production. To this end we investigated whether the addition of high levels of IL-4 or addition of a neutralizing IL-4 antibody would alter the cytokine profile of classical or type II-activated BMM $\phi$ . In particular, we were interested in determining if the neutralization of IL-4 *in vitro* would reproduce our results using IL-4R $\alpha$ -deficient BMM $\phi$ . As shown in Figures 4a and b, the addition of IL-4 to BMM $\phi$  cultures stimulated with LPS (i.e. classical activation) resulted in a reduction



**Figure 3. F4/80<sup>+</sup>/CD11b<sup>+</sup> but not F4/80<sup>-</sup>CD11b<sup>-</sup> cells produce IL-4.** IFN- $\gamma$ -primed BMM $\phi$  ( $10^5$ /well) from heterozygous G4 mice were stimulated with LPS (10 ng/ml) in the presence or absence of opsonized SRBC (IC) for 24 hours. (a) Live cells were selected by FSC vs SSC and this subpopulation divided into F4/80<sup>+</sup>CD11b<sup>+</sup> and F4/80<sup>-</sup>CD11b<sup>-</sup> populations. (b) F4/80<sup>+</sup>CD11b<sup>+</sup> cells and not F4/80<sup>-</sup>CD11b<sup>-</sup> cells produce IL-4 after stimulation with LPS + IC. Shown are representative data from 1 of 3 experiments.  
doi:10.1371/journal.pone.0046989.g003

in both IL-12p40 and IL-10 production and is consistent with previous studies [12]. However, the neutralization of IL-4 did not enhance the production of these cytokines (Figures 4a and b) as was expected given the enhanced production of IL-12p40 and IL-

10 in IL-4R $\alpha$ -deficient BMM $\phi$  (Figure 1a–d). Moreover, similar results were found using type II-activated BMM $\phi$  where additional IL-4 could reduce cytokine production while neutralization of IL-4 *in vitro* had no effect (Figure 4a and b). Finally, because type II



**Figure 4. Addition of IL-4 reduces IL-12p40 and IL-10 production by BMMφ whereas neutralization of IL-4 does not alter cytokine production.** (a–c) IFN- $\gamma$ -primed BMMφ ( $10^5$ /well) from WT (a–c) and IL-4R $\alpha$  $^{-/-}$  (c) mice were stimulated with LPS (10 ng/ml) in the presence or absence of opsonized SRBC (IC), IL-4 (3 ng/ml), or neutralizing anti-IL-4 mAb (1  $\mu$ g/ml) for 24 hours. In (c) only cultures with exogenous IL-4 (3 ng/ml) are shown. Cytokine production was measured in culture supernatants by ELISA. Shown are the means and SEM of triplicate wells from 1 of 3 representative experiments. \* $p < 0.001$  LPS or LPS + anti-IL-4 versus all other groups, \*\* $p < 0.001$  LPS + IL-4 versus all other groups, and \*\*\* $p < 0.01$  LPS versus LPS + IL-4 or LPS + IC by one-way ANOVA with Bonferroni's post-test. For (c) \* $p < 0.05$  compared to medium by Dunnett's Multiple Comparison Test. (d) IFN- $\gamma$ -primed BMMφ ( $10^5$ /well) from heterozygous G4 mice were stimulated as above (a–c) and IL-4 production assessed by flow cytometry. % medium = (geoMFI of sample/geoMFI of medium)  $\times 100$ . Shown are the means and SEM of triplicate wells from 3 experiments. \* $p < 0.01$  compared to medium by Dunnett's Multiple Comparison Test. doi:10.1371/journal.pone.0046989.g004

activation also leads to a distinct alteration in the expression of several co-stimulatory and activation markers on macrophages (i.e. reduction in CD40 and PD-L1) [3], we investigated how IL-4 regulated the expression of CD40 and PD-L1 on classical and type

II-activated BMMφ. We found that the addition or neutralization of IL-4 did not alter CD40 or PD-L1 expression and that WT and IL-4R $\alpha$ -deficient BMMφ had similar levels of CD40 and PD-L1 after type II or classical activation, respectively (Figure S4 and data



not shown). As expected, PD-L2 expression was significantly induced by the addition of IL-4 [13]; however, neither classical nor type II-activated BMM $\phi$  expressed PD-L2 even in the presence of exogenous IL-4 (Figure S4). Taken together these data suggest that the type II activation phenotype is independent of IL-4.

To determine if exogenous IL-4 could enhance the production of IL-4 by macrophages, we assessed whether the addition of IL-4 or a neutralizing IL-4 antibody altered the expression of IL-4 in IL-4-GFP BMM $\phi$ . As shown in Figure 4d, the addition of IL-4 did not enhance IL-4 production by type II or classically activated BMM $\phi$ . Furthermore, during the period of culture, IL-4 did not promote a significant upregulation of CD124 under any condition (data not shown). Similar results were found when IL-4 was neutralized *in vitro* (Figure 4d). These results suggest that while high levels of IL-4 may alter cytokine production by macrophages, the low levels produced by type II-activated macrophages are not responsible for the cytokine profile. Moreover, the differences in IL-12 and IL-10 production by BMM $\phi$  from WT and IL-4R $\alpha$ -deficient mice are not due to autocrine IL-4 production during the *in vitro* culture. The minimal effect of IL-4 on the macrophages may be due to the extremely low levels of CD124 expressed. In contrast, other cells (e.g. T cells) that express higher levels of CD124 may be more responsive to the low levels of IL-4 produced by type II activated macrophages.

#### IL-4 Produced during Derivation of BMM $\phi$ may Result in Reduced Cytokine Responses by WT Compared to IL-4R $\alpha$ -deficient BMM $\phi$

Our finding that the production of IL-4 by BMM $\phi$  was not responsible for the difference in cytokine production by WT and IL-4R $\alpha$ -deficient BMM $\phi$  suggests that during early haematopoietic differentiation of macrophages, signals through IL-4R $\alpha$  may be important in determining the quantity and range of cytokines produced after full differentiation into mature BMM $\phi$ . This potential pathway is supported by a recent study by Kuroda *et al* who found that during the derivation of macrophages from bone marrow progenitors with GM-CSF or IL-3, IL-4 produced by basophils could drive an alternative macrophage activation state [14]. To test if the derivation conditions we used (GM-CSF plus IL-3) promoted IL-4 production, we compared IL-4 levels in the supernatants of the bone marrow cultures derived with GM-CSF plus IL-3 to those with M-CSF. In supernatants from both WT and IL-4R $\alpha$ -deficient cultures, significantly more IL-4 was produced when GM-CSF plus IL-3 was used than M-CSF (Figure 5a). Moreover, BMM $\phi$  derived using GM-CSF plus IL-3 had a greater propensity to produce IL-4 after type II activation than M-CSF-derived macrophages, which produced only minimal levels of IL-4 (Figure 5b). As expected, both derivation methods produced BMM $\phi$  that could be type II activated; however, GM-CSF plus IL-3-derived macrophages produced significantly more IL-12p40 upon classical activation while M-CSF-derived macrophages produced significantly higher IL-10 upon type II activation (Figure 5c and d). Finally, when comparing M-CSF-derived macrophages from WT and IL-4R $\alpha$ -deficient mice, there was no clear difference in IL-12 and IL-10 production as seen with GM-CSF plus IL-3-derived macrophages (Figure 5e and f) suggesting that the high levels of IL-4 produced during the differentiation with GM-CSF plus IL-3 may be responsible for the observed reduction in IL-12p40 and IL-10 production after classical or type II activation of WT compared to IL-4R $\alpha$ -deficient BMM $\phi$ .

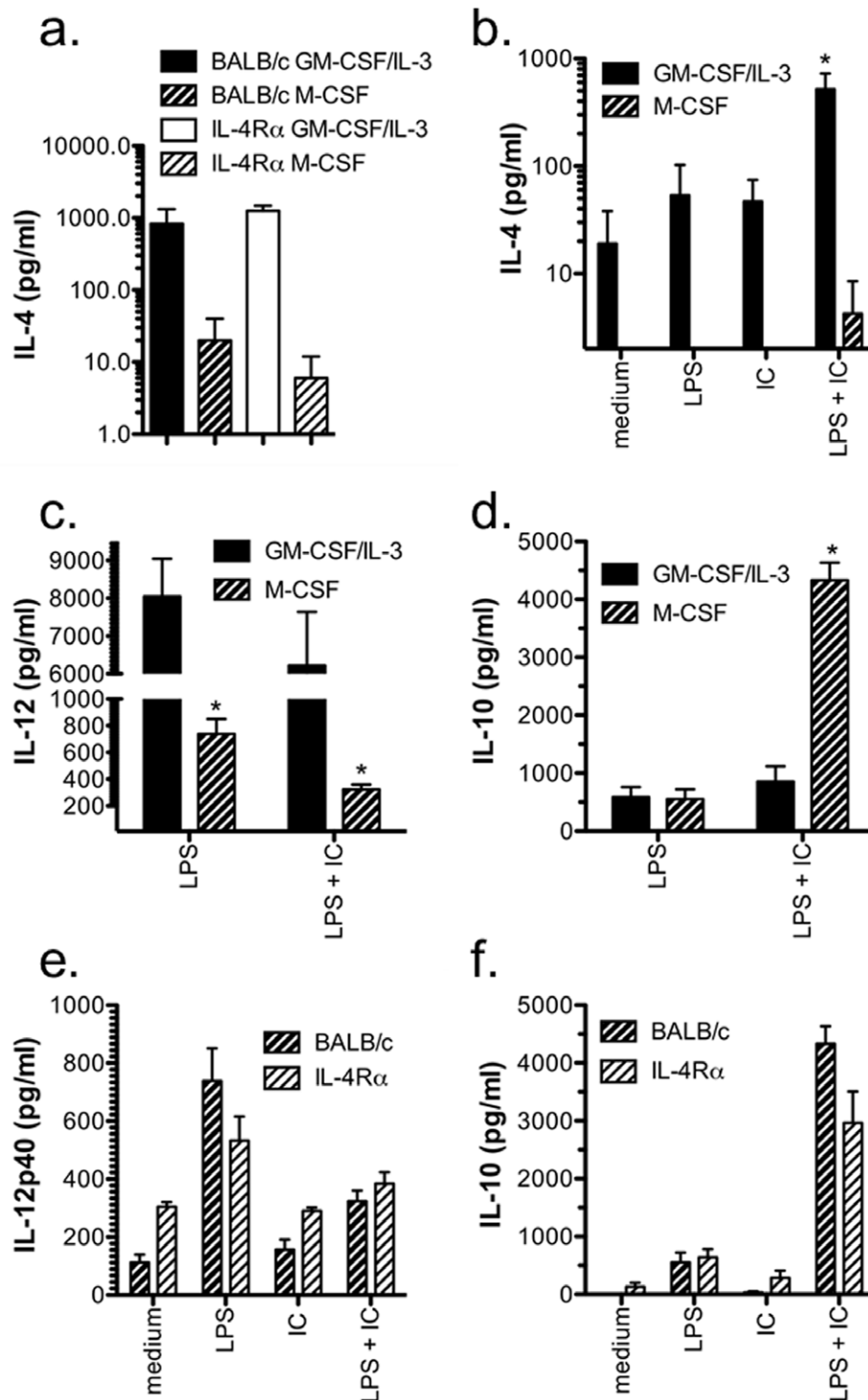
#### Other Type II-activating Stimuli Induce IL-4 Production by Macrophages

Type II activation is commonly induced using opsonized SRBC [3], but other IC and compounds have also been reported to induce type II activation including opsonized ovalbumin [7], opsonized schistosome egg antigens (SEA) from *Schistosoma mansoni* [15], and glatiramer acetate (a common treatment for multiple sclerosis) [16,17]. To determine whether the production of IL-4 by type II-activated macrophages was specific to the use of opsonized SRBC, we measured IL-4 production by BMM $\phi$  type II-activated with glatiramer acetate and LPS. In comparison to BMM $\phi$  activated with opsonized SRBC and LPS, type II activation by glatiramer acetate induced a similar level of IL-4 production (Figure 6a). Interestingly, glatiramer acetate alone resulted in a similar level of IL-4 as glatiramer acetate and LPS (Figure 6a). In contrast, while glatiramer acetate and LPS reduced IL-12p40 production and increased IL-10, glatiramer acetate alone did not induce BMM $\phi$  to produce either IL-12p40 or IL-10 (Figure S5). Glatiramer acetate is known to enhance Th2 responses in EAE, the animal model of MS [18]; however, the mechanism by which this occurs is unknown. Our results suggest that glatiramer acetate drives type II activation of macrophages and possibly microglia and thus induces the innate production of IL-4. This IL-4 in turn may promote immune deviation and Th2 response development. Recent work has confirmed that microglia produce IL-4 in the CNS during EAE [19] and together with our results, these findings suggest that type II activation by glatiramer may further promote IL-4 production by microglia in the CNS.

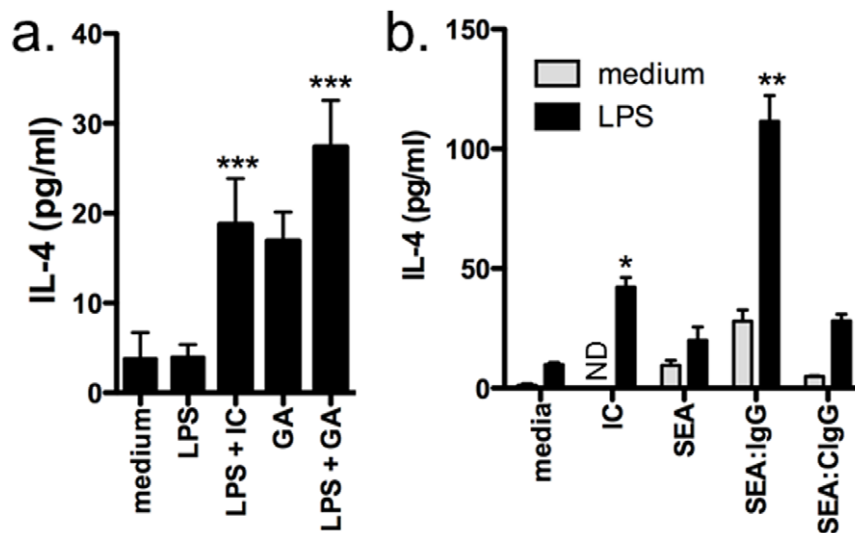
Given the known Th2-promoting ability of schistosome eggs [20], we assessed if opsonized SEA upregulated IL-4 production by C57BL/6 macrophages. In a manner similar to BALB/c macrophages, type II-activated macrophages from C57BL/6 mice produced significant but modest levels of IL-4 (Figure 6b), and exposure to opsonized SEA (SEA:IgG) greatly enhanced IL-4 production. SEA alone induced a small increase in IL-4, which was further enhanced by LPS, but these levels were significantly less than those induced by opsonized SEA. Furthermore, no increase in IL-4 production was found when control IgG was incubated with SEA (SEA:CIgG) indicating that the effect is dependent on IC (Figure 6b). Finally, as observed with glatiramer acetate and opsonized SRBC, the opsonized SEA alone induced a modest but significant level of IL-4 (Figure 6b). Together these findings suggest that opsonized SEA may be involved in the Th2-promoting ability of *S. mansoni* by promoting type II activation and IL-4 production by macrophages.

#### Conclusions

Overall, our results are the first to indicate that type II activation induces production of low but significant levels of IL-4 by macrophages and that this production is common to all type II-inducing agents tested. Furthermore, we showed that the classical and type II activation profile is independent of IL-4 and neutralization of IL-4 did not enhance IL-10 or IL-12p40 cytokine production to the level of the IL-4R $\alpha$ -deficient BMM $\phi$ . Instead the difference in the capacity of BMM $\phi$  to produce these cytokines may be determined during their differentiation from bone marrow progenitors where the use of GM-CSF plus IL-3 leads to an IL-4 rich environment. Finally, if the Th2-promoting effects of type II activation are a result of macrophage-derived IL-4 acting upon the CD4 T cell during Th subset differentiation, a new pathway by which innate cells promote Th2 subset differentiation will have been identified and research is currently underway to confirm this idea. This work thus reveals another mechanism by which innate cells may direct and shape adaptive responses and opens up a new



**Figure 5. GM-CSF plus IL-3-derived BMM $\phi$  differentiate in a more IL-4 rich environment and produce higher IL-12p40 and IL-4 levels upon stimulation compared to M-CSF-derived BMM $\phi$ .** GM-CSF plus IL-3 or M-CSF-derived BMM $\phi$  ( $10^5$ /well) from WT (a–f) and IL-4R $\alpha$ –/– (a, e, and f) mice were primed overnight with IFN- $\gamma$  and stimulated with LPS (10 ng/ml) in the presence or absence of opsonized SRBC (IC) for 24 hours. (a) IL-4 in the supernatants of the derivation cultures after harvesting of the mature macrophages was assessed by ELISA.  $p < 0.05$  by repeated measures ANOVA. (b–d) IL-4, IL-12, and IL-10 levels were assessed in the culture supernatants of GM-CSF plus IL-3 or M-CSF –derived WT macrophages by ELISA.  $*p < 0.01$  compared to all other groups (b) or GM-CSF/IL-3 compared to M-CSF (c and d) by one way ANOVA with Bonferroni's multiple comparison test. (e and f) M-CSF-derived macrophages from WT and IL-4R $\alpha$ -deficient mice produce similar levels of IL-12 and IL-10 as assessed by ELISA. (a–f) Shown are the means and SEM of 3 independent experiments.  
doi:10.1371/journal.pone.0046989.g005



**Figure 6. Other type-II activating products stimulate IL-4 production by macrophages.** IFN- $\gamma$ -primed BMM $\phi$  ( $10^5$ /well) from WT BALB/c (a) or C57BL/6 (b) mice were stimulated with LPS (10 ng/ml) in the presence or absence of opsonized SRBC (IC), glatiramer acetate (200 ng/ml), SEA (5  $\mu$ g/ml) or SEA opsonized with IgG purified from infected mice (SEA:IgG; 5  $\mu$ g/ml; 20  $\mu$ g/ml) for 24 hours. Cytokine production was measured in culture supernatants by ELISA. Shown are the means and SEM of triplicate wells from 1 of 2 representative experiments. \* $p$ <0.05 compared to LPS alone and \*\* $p$ <0.01 compared to all other groups by one-way ANOVA with Bonferroni's post test. \*\*\* $p$ <0.001 compared to medium by Dunnett's Multiple Comparison Test. doi:10.1371/journal.pone.0046989.g006

target for therapies designed to regulate dysfunctional immune responses.

## Materials and Methods

### Mice

WT and IL-4R $\alpha^{-/-}$  BALB/c male and female mice were bred at the Victoria University of Wellington animal facility and WT C57BL/6 mice were bred at the Malaghan Institute of Medical Research animal facility in Wellington, New Zealand. GFP/IL-4 knockin (G4) mice were generously provided by Graham Le Gros (Malaghan Institute), and their generation has been previously described [11]. All animals were utilized at 8–12 wk of age. All experimental procedures used in this study were approved by the Victoria University of Wellington Animal Ethics Committee (protocol #2008R12).

### Cellular Isolation and in vitro Culture

Bone marrow-derived macrophages (BMM $\phi$ ) were derived as described [21]. Briefly, progenitor cells were flushed from the femurs of mice, the adherent cells removed, and the remaining cells cultured with GM-CSF and IL-3 (5 ng/ml of each; PeproTech, Rocky Hill, NJ) or M-CSF (5 ng/ml; R & D Systems, Minneapolis, MN) for 7–10 days. The adherent cells (i.e. macrophages) were collected after incubation in cold Dulbecco's PBS (Ca $^{2+}$  and Mg $^{2+}$ -free; Invitrogen, Auckland, New Zealand). For *in vitro* macrophage cultures, BMM $\phi$  ( $10^5$ /well) were cultured in complete medium containing DMEM, 10% FCS, 100 U/ml penicillin plus 100 mg/ml streptomycin, 10 mM Hepes, 2 mM L-glutamine, and 50  $\mu$ M 2-ME (all from Invitrogen) in 96-well, flat-bottomed plates (BD Biosciences, Franklin Lakes, NJ). After overnight stimulation with IFN- $\gamma$  (20 U/ml; BD Biosciences), BMM $\phi$  were cultured with LPS (10 ng/ml; Sigma, St. Louis, MO) in the presence or absence of type II-inducing stimuli, IL-4 (3 ng/ml), or neutralizing rat anti-IL-4 mAb clone 11B11 (BD Bioscience).

SRBC (freshly isolated from healthy sheep, Taylor Preston Ltd., Wellington, New Zealand) were opsonised with rabbit anti-SRBC IgG polyclonal Ab (Sigma). Briefly, SRBC were incubated with anti-SRBC antibody at a non-agglutinating concentration for 30 minutes at 37°C. Immune complexes (IC) were washed of free antibody and added to BMM $\phi$  at a 10:1 ratio (IC to BMM $\phi$ ). Soluble egg antigen (SEA) was prepared as previously described [22] and allowed to complex for 30 minutes with IgG purified from *Schistosoma mansoni*-infected mice using a Protein G column (Sigma). Glatiramer acetate was kindly donated by B. Thomas Bäckström (while at Malaghan Institute of Medical Research, Wellington, New Zealand).

### Fluorescence Microscopy

After 24 hour stimulation with classical or type II-activating stimuli, G4 BMM $\phi$  were spun onto slides using a cytospin (Thermo Scientific Shandon, Waltham, MA) mounted with DAPI containing ProLong Gold anti-fade reagent (Invitrogen), and viewed using a fluorescent microscope.

### Cytokine Assays

IL-12p40, IL-10, IL-13, and IL-4 levels in culture supernatants were assessed by sandwich ELISA. For IL-12p40, IL-10, and IL-4, matched antibody pairs and recombinant standards were purchased from BD Bioscience and used according to the manufacturer's recommendations. For IL-13, the IL-13 DuoSet ELISA kit (R&D Systems) was used according to the manufacturer's protocol.

### Flow Cytometry

After *in vitro* activation, surface marker expression on BMM $\phi$  was assessed by flow cytometry. After incubation with Fc Block (BD Bioscience), cells were treated with rat anti-F4/80 (Serotec, Oxford, UK), anti-CD11b (BD Biosciences), rat anti-CD40 (BD Biosciences), rat anti-PD-L1 (eBioscience, San Diego, CA), rat anti-PD-L2 (eBioscience), or anti-CD124 (BD Biosciences). Isotype



control rat antibodies (BD Biosciences) were used to determine background fluorescence. The samples were analyzed using a FACScan flow cytometer and CELL Quest software (Becton Dickinson).

### Statistical Analyses

Data were analyzed using one-way ANOVA with Bonferroni's post-test or Dunnett's post-test (to compare to a control condition). P values <0.05 were considered significant.

### Supporting Information

**Figure S1 IL-4 is produced by type II activated macrophages 8 and 24 hours post activation.** BMM $\phi$  ( $10^5$ /well) from WT C57BL/6 mice were stimulated with LPS (10 ng/ml) in the presence or absence of opsonized SRBC (IC) for 8 or 24 hours. Cytokine production was measured in culture supernatants by IL-4 ELISA. Shown are the means and SEM of triplicate wells. (TIF)

**Figure S2 IL-13 is not induced after classical or type II activation of macrophages.** BMM $\phi$  ( $10^5$ /well) from WT BALB/c mice were stimulated with LPS (10 ng/ml) in the presence or absence of opsonized SRBC (IC) or IL-4 (3 ng/ml) for 24 hours. Cytokine production was measured in culture supernatants by IL-13 ELISA. Shown are the means and SEM of triplicate wells. (TIF)

**Figure S3 CD124 expression is detectable but extremely low on IC and LPS + IC-treated BMM $\phi$ .** BMM $\phi$  ( $10^5$ /well) from WT BALB/c mice were stimulated with LPS (10 ng/ml) in the presence or absence of opsonized SRBC (IC) for 24 hours. Live cells were selected by FSC vs SSC. Shown is the CD124

expression on the F4/80+CD11b+ population. The geometric mean fluorescent intensity for each sample is indicated in the box. (TIF)

**Figure S4 Type II activated macrophages do not express PDL-2 and have reduced expression of PDL-1.** BMM $\phi$  ( $10^5$ /well) from WT and IL-4R $\alpha$ -deficient mice were stimulated with LPS (10 ng/ml) in the presence or absence of opsonized SRBC (IC) or IL-4 (3 ng/ml) for 24 hours. Live cells were selected by FSC vs SSC. Shown are the PDL-2 and PDL-1 expression on the F4/80+CD11b+ population. The geometric mean fluorescent intensity for each sample is indicated in the box. (TIF)

**Figure S5 GA-generated type II macrophages show a modest reduction in IL-12 and modest increase in IL-10 compared to IC-generated type II macrophages.** BMM $\phi$  ( $10^5$ /well) from WT BALB/c mice were stimulated with LPS (10 ng/ml) in the presence or absence of opsonized SRBC (IC) or GA (100  $\mu$ g/ml) for 24 hours. Cytokine production was measured in culture supernatants by IL-12p40 and IL-10 ELISA. Shown are the means and SEM of triplicate wells. (TIF)

### Acknowledgments

The authors would like to thank Prof. Graham Le Gros and Dr. Elizabeth Forbes-Blom for supplying the G4 mice and IL-13 ELISA reagents, and David O'Sullivan for his helpful advice.

### Author Contributions

Conceived and designed the experiments: AL MK. Performed the experiments: SM MK DC RK SS. Analyzed the data: AL MK DC RK SS. Wrote the paper: AL.

### References

- Mosser DM, Edwards JP (2008) Exploring the full spectrum of macrophage activation. *Nat Rev Immunol* 8: 958–969.
- Dobrovolskaia MA, Vogel SN (2002) Toll receptors, CD14, and macrophage activation and deactivation by LPS. *Microbes Infect* 4: 903–914.
- Tierney JB, Kharkrang M, La Flamme AC (2009) Type II-activated macrophages suppress the development of experimental autoimmune encephalomyelitis. *Immunol Cell Biol* 87: 235–40.
- Ding AH, Nathan CF, Stuehr DJ (1988) Release of reactive nitrogen intermediates and reactive oxygen intermediates from mouse peritoneal macrophages. Comparison of activating cytokines and evidence for independent production. *J Immunol* 141: 2407–2412.
- Sutterwala FS, Noel GJ, Salgame P, Mosser DM (1998) Reversal of proinflammatory responses by ligating the macrophage Fc $\gamma$  receptor type I. *J Exp Med* 188: 217–222.
- Edwards JP, Zhang X, Frauwirth KA, Mosser DM (2006) Biochemical and functional characterization of three activated macrophage populations. *J Leukoc Biol* 80: 1298–1307.
- Anderson CF, Mosser DM (2002) Cutting edge: biasing immune responses by directing antigen to macrophage Fc $\gamma$  receptors. *J Immunol* 168: 3697–3701.
- La Flamme AC, Harvie M, McNeill A, Goldsack L, Tierney JB, et al. (2006) Fc $\gamma$  receptor-ligand complexes improve the course of experimental autoimmune encephalomyelitis by enhancing basal Th2 responses. *Immunol Cell Biol* 84: 522–529.
- Mukherjee S, Chen LY, Papadimos TJ, Huang S, Zuraw BL, et al. (2009) Lipopolysaccharide-driven Th2 cytokine production in macrophages is regulated by both MyD88 and TRAM. *J Biol Chem* 284: 29391–29398.
- Kang CM, Jang AS, Ahn MH, Shin JA, Kim JH, et al. (2005) Interleukin-25 and interleukin-13 production by alveolar macrophages in response to particles. *Am J Respir Cell Mol Biol* 33: 290–296.
- Hu-Li J, Pannetier C, Guo L, Lohning M, Gu H, et al. (2001) Regulation of expression of IL-4 alleles: analysis using a chimeric GFP/IL-4 gene. *Immunity* 14: 1–11.
- Bonder CS, Finlay-Jones JJ, Hart PH (1999) Interleukin-4 regulation of human monocyte and macrophage interleukin-10 and interleukin-12 production. Role of a functional interleukin-2 receptor gamma-chain. *Immunology* 96: 529–536.
- Gordon S (2003) Alternative activation of macrophages. *Nat Rev Immunol* 3: 23–35.
- Kuroda E, Ho V, Ruschmann J, Antignano F, Hamilton M, et al. (2009) SHIP represses the generation of IL-3-induced M2 macrophages by inhibiting IL-4 production from basophils. *J Immunol* 183: 3652–3660.
- La Flamme AC, K Canagasabay, M Harvie, and B. T Bäckström (2004) Schistosomiasis protects against multiple sclerosis. *Mem Inst Oswaldo Cruz* 99: 33–36.
- Weber MS, Prod'homme T, Youssef S, Dunn SE, Rundle CD, et al. (2007) Type II monocytes modulate T cell-mediated central nervous system autoimmune disease. *Nat Med* 13: 935–943.
- Kim HJ, Ifergan I, Antel JP, Seguin R, Duddy M, et al. (2004) Type 2 monocyte and microglia differentiation mediated by glatiramer acetate therapy in patients with multiple sclerosis. *J Immunol* 172: 7144–7153.
- Aharoni R, Meshorer A, Sela M, Arnon R (2002) Oral treatment of mice with copolymer 1 (glatiramer acetate) results in the accumulation of specific Th2 cells in the central nervous system. *J Neuroimmunol* 126: 58–68.
- Ponomarev ED, Maresz K, Tan Y, Dittel BN (2007) CNS-derived interleukin-4 is essential for the regulation of autoimmune inflammation and induces a state of alternative activation in microglial cells. *J Neurosci* 27: 10714–10721.
- Grzych JM, Pearce E, Cheever A, Caulada ZA, Caspar P, et al. (1991) Egg deposition is the major stimulus for the production of Th2 cytokines in murine schistosomiasis mansonii. *J Immunol* 146: 1322–1327.
- Crume KP, Miller JH, La Flamme AC (2007) Peloruside A, an antimitotic agent, specifically decreases tumor necrosis factor-alpha production by lipopolysaccharide-stimulated murine macrophages. *Exp Biol Med* 232: 607–613.
- Boros DL, Warren KS (1970) Delayed hypersensitivity-type granuloma formation and dermal reaction induced and elicited by a soluble factor isolated from *Schistosoma mansonii* eggs. *J Exp Med* 132: 488–507.