

CORRECTION

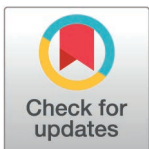
Correction: Evaluating the impact of added greenery on perceived factors of an urban environment in virtual reality

Ron Bar-Ad, Markel Vigo, Geoffrey Caruso, Qudamah Quboa, Nuno Pinto

The images for Figures 1-5 are out of order. The figure captions appear in the correct order. Please see the correct Figures 1-5 here.

Reference

1. Bar-Ad R, Vigo M, Caruso G, Quboa Q, Pinto N. Evaluating the impact of added greenery on perceived factors of an urban environment in virtual reality. PLoS One. 2025;20(2): e0316195. <https://doi.org/10.1371/journal.pone.0316195> PMID: [39913470](https://pubmed.ncbi.nlm.nih.gov/39913470/)



OPEN ACCESS

Citation: Bar-Ad R, Vigo M, Caruso G, Quboa Q, Pinto N (2025) Correction: Evaluating the impact of added greenery on perceived factors of an urban environment in virtual reality. PLoS ONE 20(4): e0321871. <https://doi.org/10.1371/journal.pone.0321871>

Published: April 2, 2025

Copyright: © 2025 Bar-Ad et al. This is an open access article distributed under the terms of the [Creative Commons Attribution License](https://creativecommons.org/licenses/by/4.0/), which permits unrestricted use, distribution, and reproduction in any medium, provided the original author and source are credited.

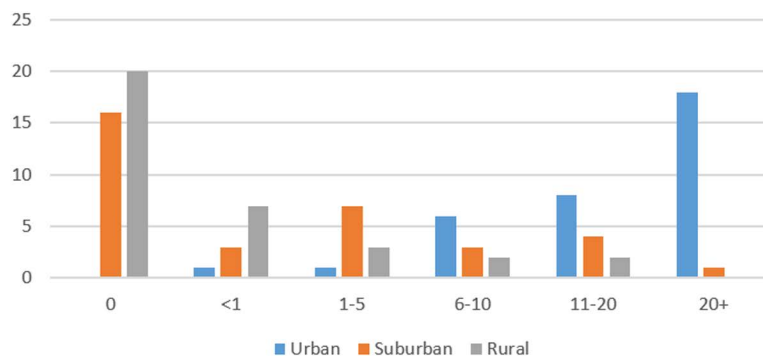


Fig 1. Sample lived experience per environment.

<https://doi.org/10.1371/journal.pone.0321871.g001>

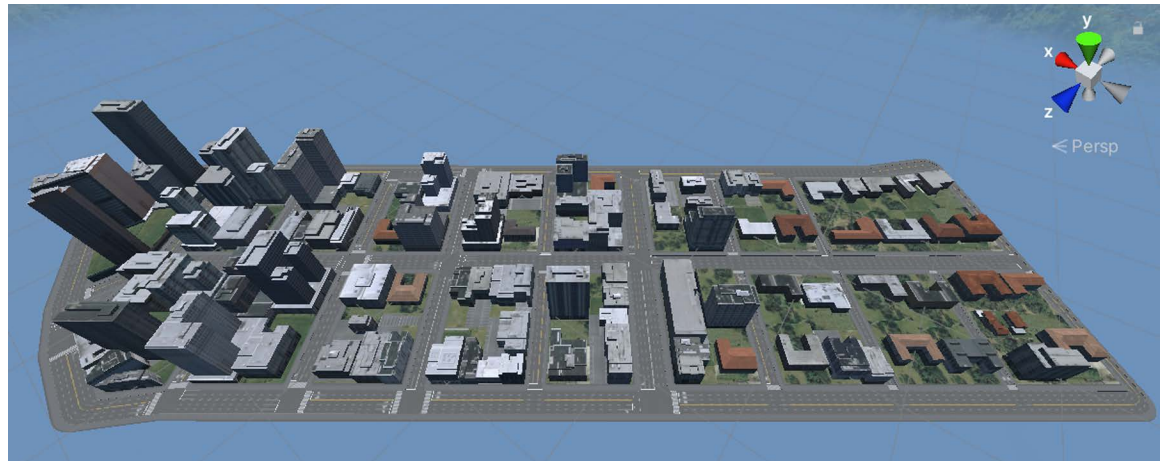


Fig 2. A bird's-eye-view of the VE with no trees.

<https://doi.org/10.1371/journal.pone.0321871.g002>

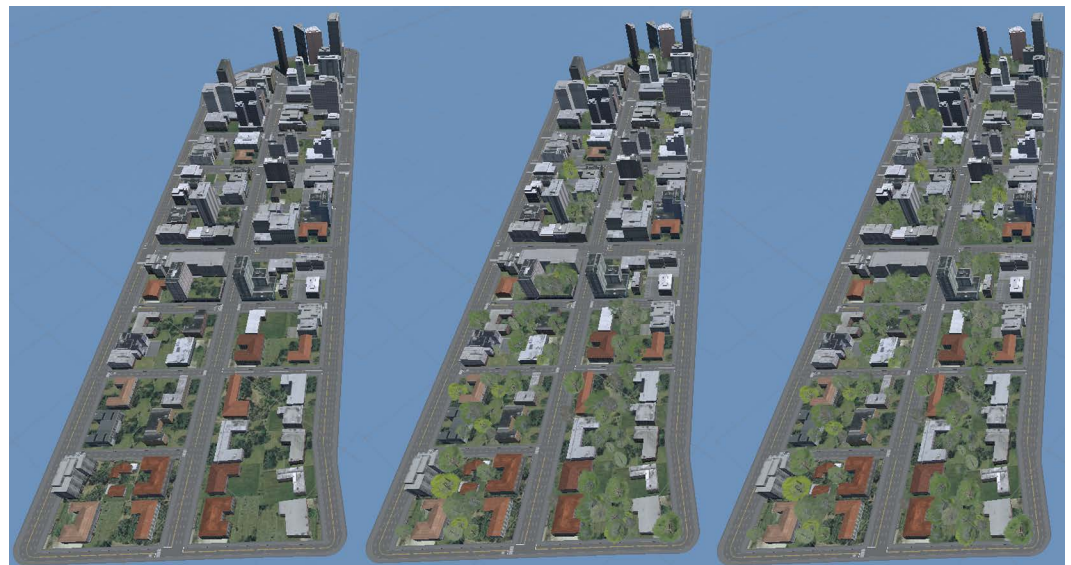


Fig 3. Environments (from left to right) NoTrees, SomeTrees and MoreTrees, side by side.

<https://doi.org/10.1371/journal.pone.0321871.g003>

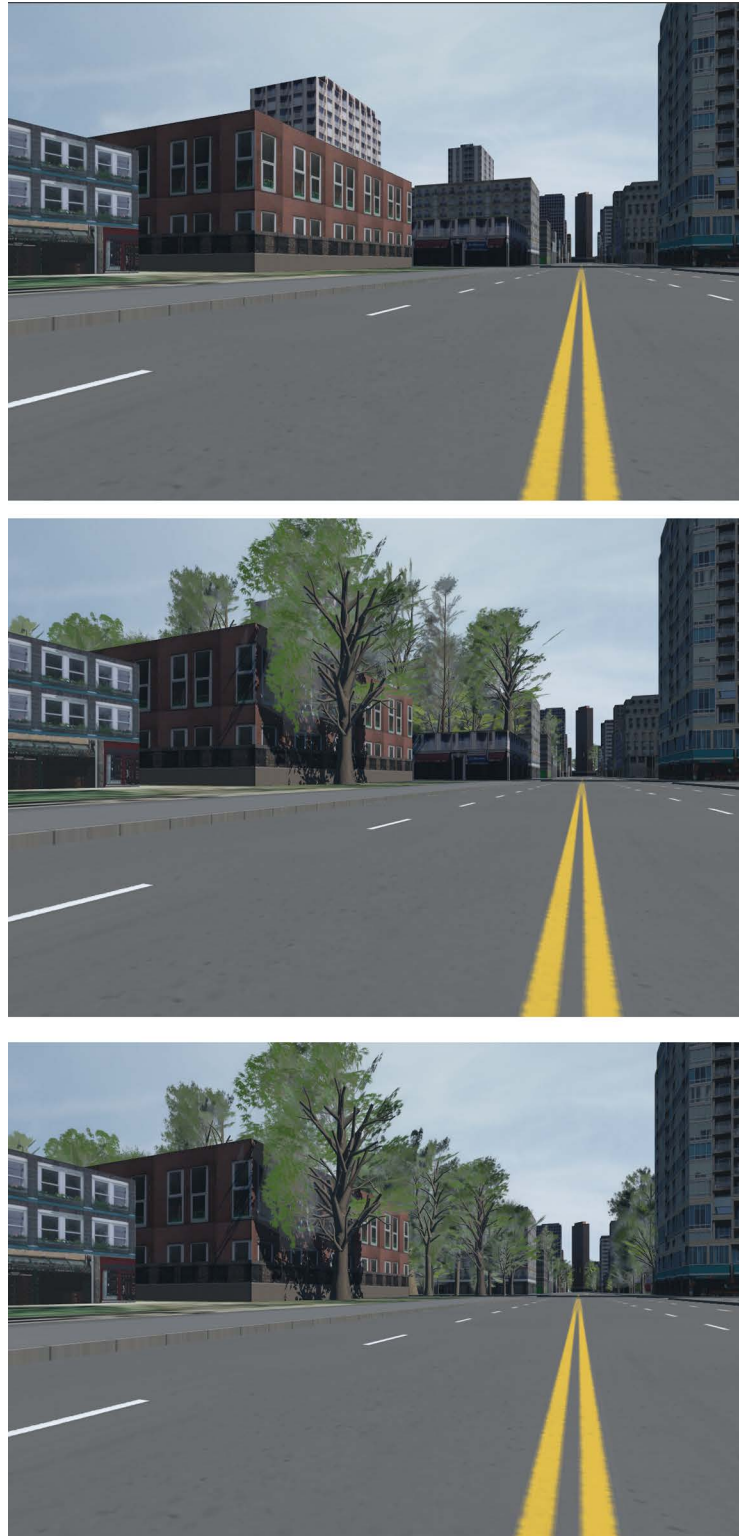


Fig 4. Environments (from top to bottom) NoTrees, SomeTrees and MoreTrees, from a street-level perspective.

<https://doi.org/10.1371/journal.pone.0321871.g004>

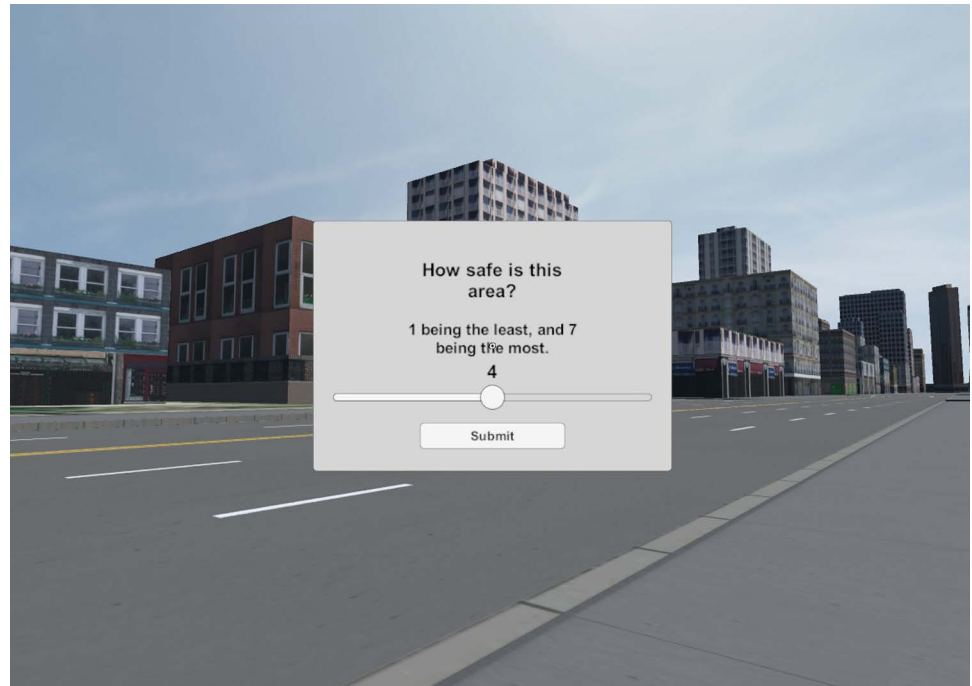


Fig 5. A view of the NoTrees environment with the questionnaire up.

<https://doi.org/10.1371/journal.pone.0321871.g005>