

CORRECTION

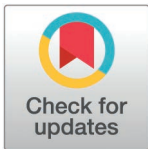
Correction: Evaluation of the impact of COVID-19 pandemic on hospital admission related to common infections: Risk prediction models to tackle antimicrobial resistance in primary care

Ali Fahmi, Victoria Palin, Xiaomin Zhong, Ya-Ting Yang, Simon Watts, Darren M. Ashcroft, Ben Goldacre, Brian MacKenna, Louis Fisher, Jon Massey, Amir Mehrkar, Seb Bacon, the OpenS.A.F.E.L.Y. Collaborative, Kieran Hand, Tjeerd Pieter van Staa

In [Fig 2](#), the legend that describes the meaning of each color used in the lines should have been included. Please see the correct [Fig 2](#) here.

Reference

1. Fahmi A, Palin V, Zhong X, Yang Y-T, Watts S, Ashcroft DM, et al. Evaluation of the impact of COVID-19 pandemic on hospital admission related to common infections: Risk prediction models to tackle antimicrobial resistance in primary care. *PLoS One*. 2024;19(12): e0311515. <https://doi.org/10.1371/journal.pone.0311515> PMID: [39739781](https://pubmed.ncbi.nlm.nih.gov/39739781/)



OPEN ACCESS

Citation: Fahmi A, Palin V, Zhong X, Yang Y-T, Watts S, Ashcroft DM, et al (2025) Correction: Evaluation of the impact of COVID-19 pandemic on hospital admission related to common infections: Risk prediction models to tackle antimicrobial resistance in primary care. *PLoS ONE* 20(3): e0321408. <https://doi.org/10.1371/journal.pone.0321408>

Published: March 28, 2025

Copyright: © 2025 Fahmi et al. This is an open access article distributed under the terms of the [Creative Commons Attribution License](https://creativecommons.org/licenses/by/4.0/), which permits unrestricted use, distribution, and reproduction in any medium, provided the original author and source are credited.

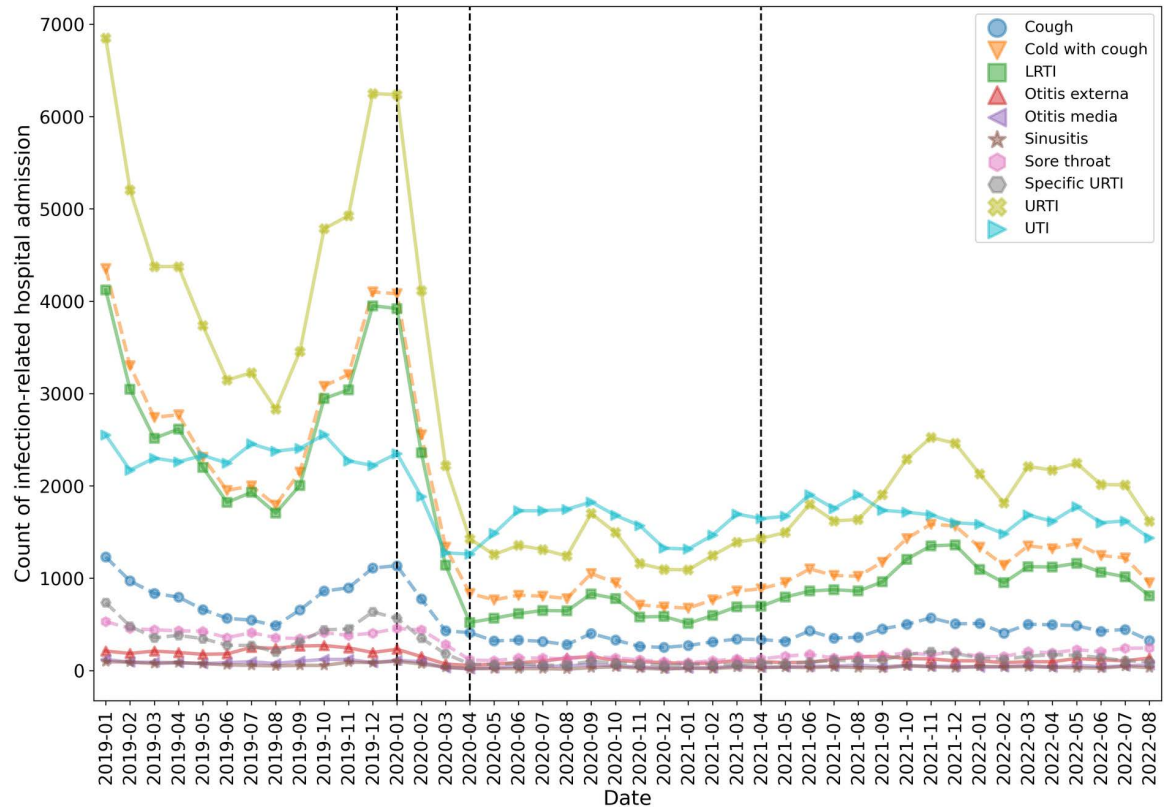


Fig 2. Count of hospital admissions related to upper respiratory tract infections (URTI; including specific URTI, cough, cold with cough, and sore throat), lower respiratory tract infection (LRTI), urinary tract infection (UTI), sinusitis, otitis media, and otitis externa.

<https://doi.org/10.1371/journal.pone.0321408.g001>