

CORRECTION

Correction: Proteomic profiling of cereal aphid saliva reveals both ubiquitous and adaptive secreted proteins

Sohail A. K. Rao, James C. Carolan, Tom L. Wilkinson

In [Fig 3B](#) of this article [1], lanes 3, 5, and 7 (the right side lanes for *A. pisum*, *S. avenae*, and *M. dirhodum*, respectively) were incorrect and should not have been used in this figure.

In [S3 Fig](#), the A and D panels were duplicates; the A panel is correct in this instance.

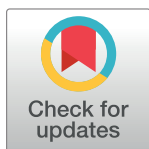
With this Correction, we provide updated versions of [Fig 3](#) and [S3 Fig](#) in which the erroneous panels have been replaced with the correct data from the original experiments. The underlying data supporting the corrected figures are provided in [S1 File](#). Whilst original uncropped copies of the raw blots derived from experimental equipment in [Fig 3](#) were no longer available, the underlying images provided to support the correction were obtained from contemporary sources. Underlying images for [S3 Fig](#) are provided in [S2 File](#).

The original SDS-PAGE images used in [Fig 1](#) are no longer available. Sequences for ACYPI000113 and ACYPI005582 are available on NCBI via GenBank Accession numbers JX417977 and JX417978, respectively.

The mass spectrometry proteomics data are available on the ProteomeXchange Consortium (proteomecentral.proteomexchange.org) via dataset identifier PXD000113.

Underlying data for [Figs 4](#) and [5](#) can be made available upon request.

The authors apologize for the errors in the published article.



OPEN ACCESS

Citation: Rao SAK, Carolan JC, Wilkinson TL (2024) Correction: Proteomic profiling of cereal aphid saliva reveals both ubiquitous and adaptive secreted proteins. PLoS ONE 19(5): e0304429. <https://doi.org/10.1371/journal.pone.0304429>

Published: May 23, 2024

Copyright: © 2024 Rao et al. This is an open access article distributed under the terms of the [Creative Commons Attribution License](https://creativecommons.org/licenses/by/4.0/), which permits unrestricted use, distribution, and reproduction in any medium, provided the original author and source are credited.

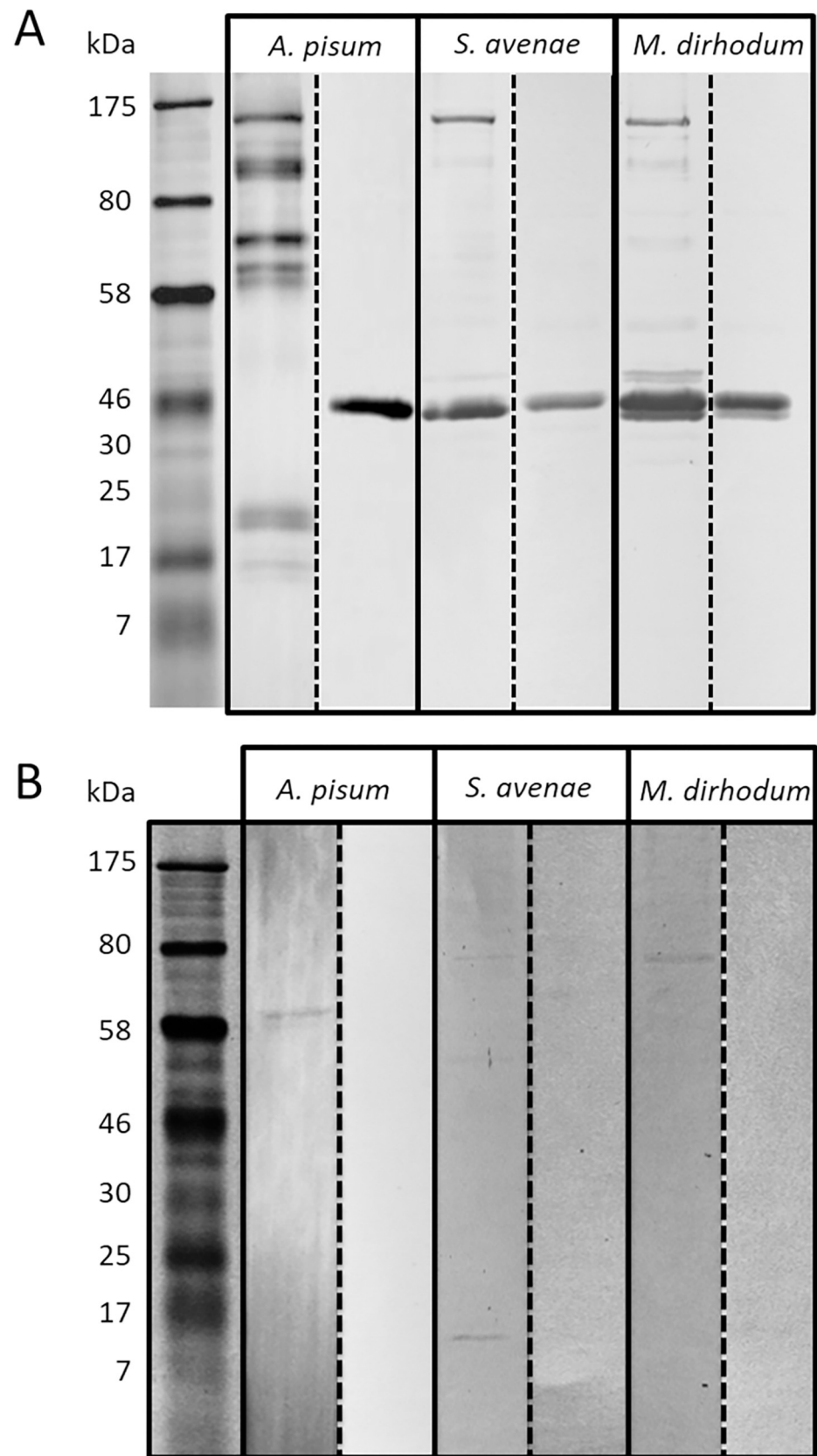


Fig 3. Immunoblotting of secreted salivary proteins from *A. pisum*, *S. avenae* and *M. dirhodum* using polyclonal antibodies raised against (A) ACYPI009881 and (B) saliva-associated GLD. Two parallel blots are shown for each aphid saliva/antibody combination; the left hand blot represents antibody-protein interactions whereas the right hand blot represents binding of the antibody after incubation with the immunizing peptide to demonstrate non-specific binding of the primary and/or secondary antibody. (The right and left lanes for each species were obtained using different blots.) The original blots in (B), except for *A. pisum* saliva, were overexposed to visualise the faint bands representing antibody binding to saliva-associated GLD.

<https://doi.org/10.1371/journal.pone.0304429.g001>

Supporting information

S3 Fig. Localisation of SHP (A–C) and GLD (D–F) using secondary antibody as primary antibody on glands; (scale 100 μ m for all pictures at 120 \times).

(TIF)

S1 File. Underlying Fig 3 blot data.

(PPTX)

S2 File. Underlying images for S3 Fig.

(ZIP)

Reference

1. Rao SAK, Carolan JC, Wilkinson TL (2013) Proteomic Profiling of Cereal Aphid Saliva Reveals Both Ubiquitous and Adaptive Secreted Proteins. PLoS ONE 8(2): e57413. <https://doi.org/10.1371/journal.pone.0057413> PMID: 23460852