

CORRECTION

Correction: Can public online databases serve as a source of phenotypic information for *Cannabis* genetic association studies?

Matthew L. Aardema, Rob DeSalle

The captions for Figs 2 and 3 are incorrectly switched. The caption that appears for Fig 2 should be for Fig 3, and the caption that appears for Fig 3 should be for Fig 2. The figures appear in the correct order. Please see the complete, correct Figs 2 and 3 captions here.



OPEN ACCESS

Citation: Aardema ML, DeSalle R (2021) Correction: Can public online databases serve as a source of phenotypic information for *Cannabis* genetic association studies? PLoS ONE 16(5): e0251930. <https://doi.org/10.1371/journal.pone.0251930>

Published: May 13, 2021

Copyright: © 2021 Aardema, DeSalle. This is an open access article distributed under the terms of the [Creative Commons Attribution License](https://creativecommons.org/licenses/by/4.0/), which permits unrestricted use, distribution, and reproduction in any medium, provided the original author and source are credited.

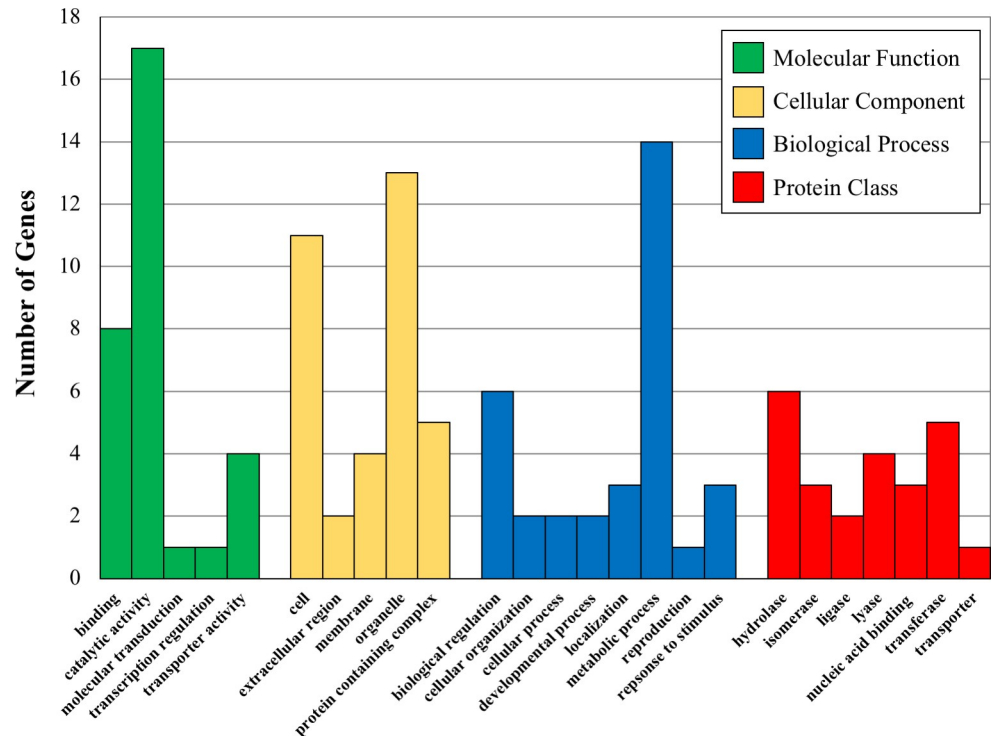


Fig 2. Bar graphs showing the number of proteins (Y axis) in various GO categories and protein classes for the indicated significant GO categories. Molecular Function GO terms are binding-GO:0005488, catalytic activity-GO:0003844, molecular transduction-GO:0060089-transcription regulation-GO: 0140110 and transporter activity-GO:005215. Cellular Component GO terms are Cell-GO:0005623, extracellular region-0005576, membrane-GO:0016020, organelle-GO:0043226 and protein containing complex-GO:003299. Biological Process GO terms are biological regulation-GO-0065007, cellular organization-GO0071840, cellular process-GO:0009987, developmental process-GO:0032502, localization-GO:0051179, metabolic process-GO:0008152, reproduction-GO-0000003, response to stimulus-GO:0050896. Protein Class GO terms are hydrolase-PC00121, isomerase-PC00135, ligase-PC00142, lyase-PC00144, nucleic acid binding-PC00171, transferase-PC00220 and transporter-PC00227.

<https://doi.org/10.1371/journal.pone.0251930.g001>

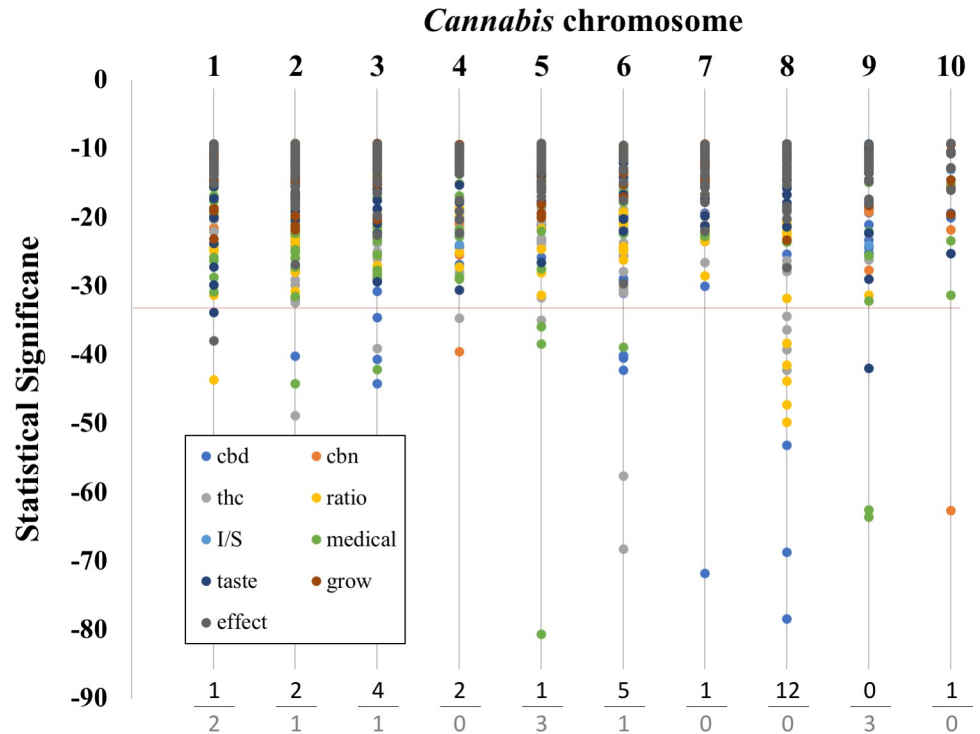


Fig 3. Graph of chromosomal location and SNP significance. Chromosome number is listed at the top. Below the dotted line are the top 5% most significant SNPs. The trait categories are listed in the box at the lower left along with their respective symbol colors. Chemical categories are: ‘cbd’, ‘thc’, ‘cbn’, and ‘ratio’. Non-chemical categories are: ‘I/S’ (the ratio if ‘indica’ to ‘sativa’), ‘taste’, ‘effect’, ‘medical’, and ‘grow’. At the bottom we tally the number of SNPs that have p values in the top 5% most significant SNPs (top value: chemical categories, bottom value: non-chemical categories).

<https://doi.org/10.1371/journal.pone.0251930.g002>

Reference

1. Aardema ML, DeSalle R (2021) Can public online databases serve as a source of phenotypic information for *Cannabis* genetic association studies? PLoS ONE 16(2): e0247607. <https://doi.org/10.1371/journal.pone.0247607> PMID: 33621243