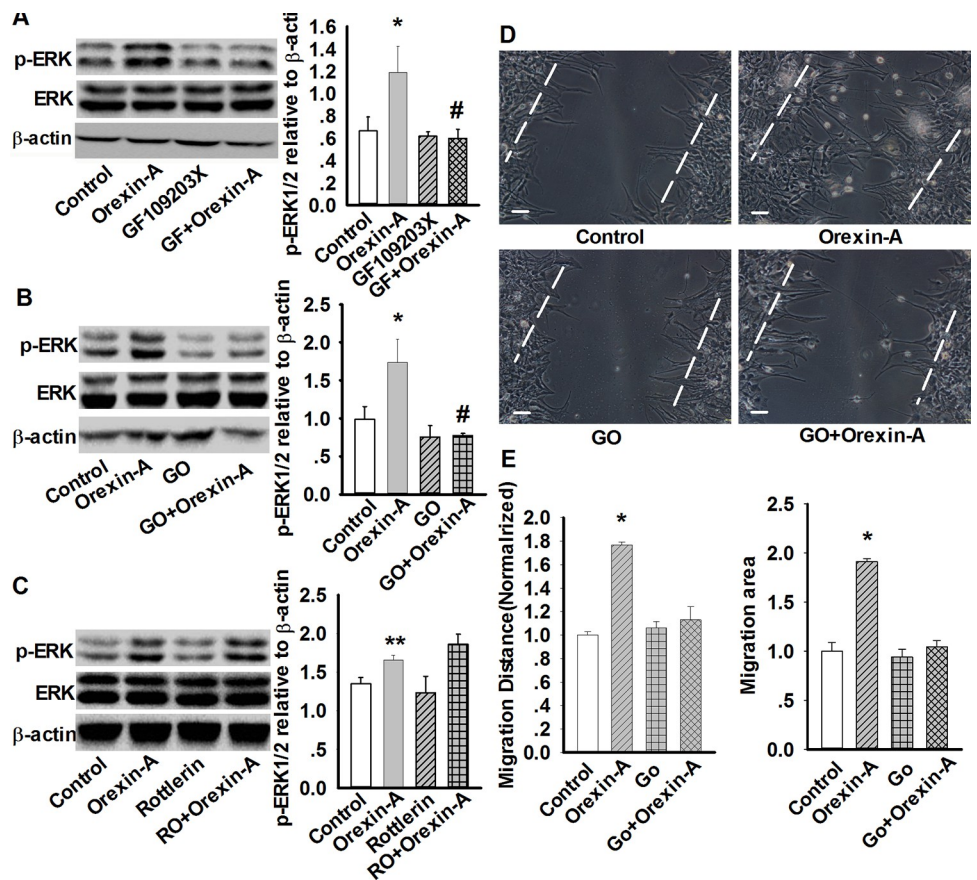


CORRECTION

# Correction: Orexin-A Promotes Cell Migration in Cultured Rat Astrocytes via Ca<sup>2+</sup>-Dependent PKCα and ERK1/2 Signals

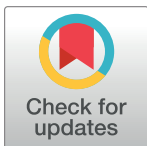
Qing Shu, Zhuang-Li Hu, Chao Huang, Xiao-Wei Yu, Hua Fan, Jing-Wen Yang, Peng Fang, Lan Ni, Jian-Guo Chen, Fang Wang

In Fig 8A, the representative β-actin blot is incorrect. Please see the correct Fig 8 here.



**Fig 8. PKCα mediates orexin-A-induced upregulation of p-ERK and cell migration in astrocytes.** A: Effect of PKC inhibitor GF109203X (10 μM, 30 min) on orexin-A-induced ERK1/2 phosphorylation. Data are expressed as means ± SEM. n=3, \*p<0.05 vs. control, #P<0.05 vs. orexin-A (GF: GF109203X). B: Effect of PKCα inhibitor Gö6976 (1 μM, 30 min) on orexin-A-induced ERK1/2 phosphorylation. Data are expressed as means ± SEM. n=3, \*p<0.05 vs. control, #p<0.05 vs. orexin-A (GO: Gö6976). C: Effect of PKCδ inhibitor rottlerin (5 μM, 30 min) on orexin-A-induced ERK1/2 phosphorylation. Data are expressed as means ± SEM. n=3, \*\*p<0.01 vs. control (RO: Rottlerin). D: Representative wound healing images showing PKCα inhibitor (GO: Gö6976) prevented orexin-A-induced astrocytes migration. E: Statistical analysis of wound healing assay. Data are expressed as means ± SEM, n=5, \*p<0.05 vs. control. Scale bar = 20 μm. The images were selected from five individual experiments.

<https://doi.org/10.1371/journal.pone.0251224.g001>



OPEN ACCESS

**Citation:** Shu Q, Hu Z-L, Huang C, Yu X-W, Fan H, Yang J-W, et al. (2023) Correction: Orexin-A Promotes Cell Migration in Cultured Rat Astrocytes via Ca<sup>2+</sup>-Dependent PKCα and ERK1/2 Signals. PLoS ONE 18(10): e0251224. <https://doi.org/10.1371/journal.pone.0251224>

**Published:** October 11, 2023

**Copyright:** © 2023 Shu et al. This is an open access article distributed under the terms of the [Creative Commons Attribution License](https://creativecommons.org/licenses/by/4.0/), which permits unrestricted use, distribution, and reproduction in any medium, provided the original author and source are credited.

[S1 File](#) and [S2 File](#) are not listed as Supporting Information. They can be viewed below.

### Supporting information

**S1 File. Fig 5G Raw Images.**  
(PDF)

**S2 File. Fig 8A Raw Images.**  
(PDF)

### Reference

1. Shu Q, Hu Z-L, Huang C, Yu X-W, Fan H, Yang J-W, et al. (2014) Orexin-A Promotes Cell Migration in Cultured Rat Astrocytes via  $\text{Ca}^{2+}$ -Dependent PKC $\alpha$  and ERK1/2 Signals. PLoS ONE 9(4): e95259. <https://doi.org/10.1371/journal.pone.0095259>