

RESEARCH ARTICLE

Post-intensive care syndrome as a predictor of mortality in patients with critical illness: A cohort study

Naoya Yanagi¹, Kentaro Kamiya^{1,2*}, Nobuaki Hamazaki³, Ryota Matsuzawa⁴, Kohei Nozaki³, Takafumi Ichikawa³, Thomas S. Valley^{5,6,7}, Takeshi Nakamura^{1,8}, Masashi Yamashita¹, Emi Maekawa⁹, Tomotaka Koike¹⁰, Minako Yamaoka-Tojo^{2,11}, Masayasu Arai¹², Atsuhiko Matsunaga^{1,2}, Junya Ako^{9,11}

1 Department of Rehabilitation Sciences, Graduate School of Medical Sciences, Kitasato University, Sagamihara, Japan, **2** Department of Rehabilitation, School of Allied Health Sciences, Kitasato University, Sagamihara, Japan, **3** Department of Rehabilitation, Kitasato University Hospital, Sagamihara, Japan, **4** Department of Physical Therapy, School of Rehabilitation, Hyogo University of Health Sciences, Kobe, Japan, **5** Division of Pulmonary and Critical Care Medicine, Department of Internal Medicine, University of Michigan, Ann Arbor, MI, United States of America, **6** Institute for Healthcare Policy and Innovation, University of Michigan, Ann Arbor, MI, United States of America, **7** Center for Bioethics and Social Sciences in Medicine, University of Michigan, Ann Arbor, MI, United States of America, **8** Department of Rehabilitation, Juntendo University Hospital, Tokyo, Japan, **9** Department of Cardiovascular Medicine, School of Medicine, Kitasato University, Sagamihara, Japan, **10** Department of Intensive Care Center, Kitasato University Hospital, Sagamihara, Japan, **11** Department of Cardiovascular Medicine, Graduate School of Medical Sciences, Kitasato University, Sagamihara, Japan, **12** Division of Intensive Care Medicine, Department of Research and Development Center for New Medical Frontiers, School of Medicine, Kitasato University, Sagamihara, Japan

* k-kamiya@kitasato-u.ac.jp



OPEN ACCESS

Citation: Yanagi N, Kamiya K, Hamazaki N, Matsuzawa R, Nozaki K, Ichikawa T, et al. (2021) Post-intensive care syndrome as a predictor of mortality in patients with critical illness: A cohort study. *PLoS ONE* 16(3): e0244564. <https://doi.org/10.1371/journal.pone.0244564>

Editor: Robert Jeenchen Chen, Ohio State University Wexner Medical Center Department of Surgery, UNITED STATES

Received: September 22, 2020

Accepted: December 13, 2020

Published: March 10, 2021

Peer Review History: PLOS recognizes the benefits of transparency in the peer review process; therefore, we enable the publication of all of the content of peer review and author responses alongside final, published articles. The editorial history of this article is available here: <https://doi.org/10.1371/journal.pone.0244564>

Copyright: © 2021 Yanagi et al. This is an open access article distributed under the terms of the [Creative Commons Attribution License](https://creativecommons.org/licenses/by/4.0/), which permits unrestricted use, distribution, and reproduction in any medium, provided the original author and source are credited.

Data Availability Statement: All relevant data are available in the Figshare repository at <https://doi.org/10.6084/m9.figshare.14102567.v1>.

Abstract

Introduction

The post-intensive care syndrome (PICS) encompasses multiple, diverse conditions, such as physical disability, cognitive impairment, and depression. We sought to evaluate whether conditions within PICS have similar associations with mortality among survivors of critical illness.

Materials and methods

In this retrospective cohort study, we identified 248 critically ill patients with intensive care unit stay ≥ 72 hours, who underwent PICS evaluation. Patients with disability in activities of daily living, cognitive impairment, or depression before hospitalization were excluded. We defined PICS using established measures of physical disability (usual gait speed), cognitive impairment (Mini-Cog test), and depression (Patient Health Questionnaire-2) at hospital discharge. The endpoint was all-cause mortality.

Results

Patients had a median age of 69 years and Acute Physiology and Chronic Health Evaluation (APACHE) II score of 16. One hundred thirty-two patients were classified as having PICS, and 19 patients died. 81/248 (34%) patients had physical disability, 42/248 (19%) had cognitive impairment, and 44/248 (23%) had depression. After adjusting for covariates on

Funding: The authors received no specific funding for this work.

Competing interests: The authors have declared that no competing interests exist.

Multivariable Cox regression analyses, PICS was significantly associated with all-cause mortality (hazard ratio [HR] 3.78, 95% confidence interval [CI] 1.02 – 13.95; $P = 0.046$). However, the association between PICS and all-cause mortality was related to physical disability and cognitive impairment ($P = 0.001$ and $P = 0.027$, respectively), while depression was not ($P = 0.623$).

Conclusion

While PICS as a syndrome has been useful in gaining attention to the sequelae of critical illness, its relationship with long-term mortality is driven largely by physical disability and cognitive impairment and not depression.

Introduction

Mortality among critically ill patients in the intensive care unit (ICU) has decreased with the continued development of tools and techniques for providing life support [1]. Therefore, it is necessary to take long-term patient health and function into account when planning ICU care [2]. Post-intensive care syndrome (PICS) is a constellation of long-term physical, neurocognitive, and mental health complications in surviving patients following a stay in the ICU [3–7]. The term PICS describes new or worsening physical disability, cognitive impairment, or mental health impairment occurring after critical illness that persists after the period of hospitalization for acute care [8, 9].

Despite increasing awareness of its clinical importance, there have been few detailed studies regarding the evaluation of comprehensive PICS conditions in patients surviving after ICU treatment. In a population of 406 respiratory failure or shock patients in medical and surgical ICUs from five centers in the USA, Marra et al. reported that six of 10 patients surviving after a critical illness had one or more issues related to PICS up to 1 year after ICU admission [10]. In such cases, assessment of PICS conditions may be useful for risk stratifying survivors of critical illness. However, there is limited understanding as to whether PICS, as an umbrella syndrome, is associated with long-term mortality or whether any association is driven by a particular PICS condition.

Materials and methods

Setting and study participants

In this retrospective cohort study, 555 consecutive patients were identified who were admitted to the ICU of Kitasato University Hospital for more than 72 hours between April 2014 and February 2018 for cardiovascular disease. PICS evaluation was performed at hospital discharge. Patients who died during the hospitalization were excluded. Thirty-five patients were excluded because they were not independent in basic activities of daily living or had been diagnosed with dementia or depression before hospitalization (Fig 1). The study was performed in accordance with the tenets of the Declaration of Helsinki and was approved by the Ethics Committee of Kitasato University Hospital (B18-075).

Data collection and outcome

Data on all variables were collected from electronic medical records. Baseline data, including age, sex, body mass index (BMI), and Charlson Comorbidity index (CCI) score [11], were

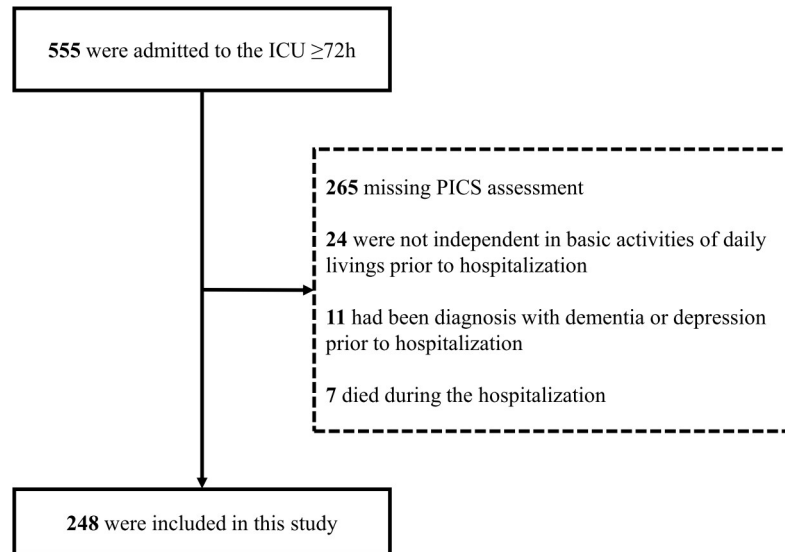


Fig 1. Flow diagram of the patient selection and exclusion process in this study.

<https://doi.org/10.1371/journal.pone.0244564.g001>

collected. Clinical data, including clinical diagnosis (e.g., heart failure, acute coronary syndrome, cardiac surgery, aortic disease), Acute Physiology and Chronic Health Evaluation (APACHE) II score at admission [12], mean Sequential Organ Failure Assessment (SOFA) score during ICU stay [13], and the duration of hospital stay were also collected. In addition, the duration of mechanical ventilation, duration of delirium as assessed by the confusion assessment method for the intensive care unit (CAM-ICU) [14], the use of neuromuscular blocking agents, sedative drugs, or steroids and the requirement for intra-aortic balloon pumping, extra corporeal membrane oxygenation, or continuous veno-venous hemofiltration during the ICU stay, were recorded.

The primary outcome was the association between PICS and all-cause mortality. Secondary outcomes were the association between a PICS component (physical disability, cognitive impairment, or depression) and all-cause mortality. The endpoints were calculated as the number of days from discharge to the date of the event, and all-cause death was determined by a review of the medical records.

Determining PICS components

We defined PICS using established measures of physical disability, cognitive impairment, and depression [15–17]. As a measure of physical disability, we used usual gait speed [18]. Usual gait speed was determined by measuring the speed at which the patient walked at their normal pace over a distance of 10 m. The use of walking aids was allowed for patients who usually used such equipment in their normal daily life. Physical disability was defined as a usual gait speed ≤ 0.8 m/s [19]. Patients who could not walk alone were categorized as physical disability. As a measure of cognitive function, we used the Mini-Cog test [20]. The Mini-Cog test consisted of a three-item recall test to assess memory and a clock-drawing test to assess executive function. The results of the clock-drawing test were assessed as normal (2 points) or abnormal (0 points), and Mini-Cog score ranged from 0 to 5. Cognitive impairment was defined as a Mini-Cog score ≤ 2 [21]. As a measure of depressive symptoms, we used the Patient Health Questionnaire-2 (PHQ-2) [22]. For the PHQ-2, the patients were asked how often they had experienced anhedonia and depressive symptoms in the past 2 weeks. Each question was given

a score from 0 to 3, and the total PHQ-2 score ranged from 0 to 6. Depression was defined as PHQ-2 score ≥ 3 [23]. Evaluation of each PICS component was performed at the time of discharge from the hospital. A diagnosis of PICS was made in patients with at least one PICS component, while patients without a PICS component were defined as PICS-Free.

Statistical analyses

Continuous variables were reported as the median and interquartile range (IQR), and categorical variables were expressed as number and percentage.

Baseline characteristics were compared by one-way analysis of variance, Wilcoxon's rank sum test, or the χ^2 test as appropriate. The association between PICS and the primary outcome variable, all-cause mortality, was examined by the Kaplan–Meier method with the log-rank test and Cox proportional hazard model. We adjusted for the pre-existing risk factors including age, sex, BMI, CCI score, APACHE II score, and length of hospital stay, in the multivariable Cox proportional hazard model. We also examined the relationships between the different components of PICS (i.e., physical disability, cognitive impairment, and depression) and all-cause mortality using the Kaplan–Meier method with the log-rank test and multivariable Cox proportional hazard model adjusted for the pre-existing risk factors.

The multivariable logistic regression analysis was performed to predict risk factors for each component of PICS, using demographic covariates (age, sex, BMI and CCI score) and clinical covariates (APACHE II score, length of ICU stay, length of hospital stay, duration of mechanical ventilation, and duration of delirium).

Among patients who were reviewed, 16.9% had missing APACHE II data. We assumed that these data were missing at random and performed multiple imputation by chain equations with 20 iterations to replace missing values [24–26]. Age, sex, BMI, CCI score, APACHE II score, ICU length of stay, hospital length of stay, duration of mechanical ventilation and duration of delirium were incorporated into the imputation model. Estimates from each multiple data set were combined using Rubin's rule.

The analyses were performed using R (version 3.5.2; R Project for Statistical Computing, Vienna, Austria) and Stata, version 16.0. In all analyses, $P < 0.05$ was taken to indicate statistical significance.

Results

Patient characteristics

[Fig 1](#) shows the patient flow in this study. Of the 555 patients who stayed in the ICU for 72 hours or more during the study period, 248 were included in the study. Overall, the participants had a median age of 69 years, 173/248 (70%) were male, and had a median APACHE II score at admission of 16. Diagnoses at admission were as follows: acute heart failure, 61/248 (24%); acute coronary syndrome, 64/248 (26%); admission following cardiac surgery, 32/248 (13%); aortic disease, 48/248 (19%); and other clinical diagnoses, 43/248 (17%). A diagnosis of PICS was made in 132/248 patients (53%) and a median hospital length of stay was 29 days ([Table 1](#)).

Association of PICS with all-cause mortality

Following hospital discharge, 19 patients died over a mean follow-up period of 1.0 ± 0.8 years. Kaplan–Meier analysis indicated that patients with PICS had a significantly elevated mortality rate compared to patients without PICS (log-rank test: $P = 0.024$) ([Fig 2](#)). In the univariable and multivariable Cox regression analyses for all-cause mortality, PICS was also significantly

Table 1. Patient characteristics.

Characteristics	All patients (n = 248)	PICS (n = 132)	PICS-Free (n = 116)	P value
Age (year), median (IQR)	69 (58–77)	74 (65–80)	66 (54–71)	< 0.001
Male sex, n (%)	173 (70)	87 (66)	86 (74)	0.168
Body mass index (kg/m ²), median (IQR)	22.1 (19.9–24.1)	22.1 (19.7–24.1)	22.1 (20.1–24.1)	0.547
Diagnoses at admission, n (%)				
Acute heart failure	61 (24)	35 (27)	26 (22)	0.467
Acute coronary syndrome	64 (26)	30 (23)	34 (29)	0.248
Cardiac surgery	32 (13)	15 (11)	17 (15)	0.455
Aortic disease	48 (19)	28 (21)	20 (17)	0.430
Other diagnoses	43 (17)	23 (17)	20 (17)	0.970
Charlson Comorbidity Index score, median (IQR)	1 (0–2)	1 (0–2)	1 (0–2)	0.798
APACHE II score at admission, median (IQR)	16 (12–22)	17 (13–22)	15 (11–19)	0.005
Mean daily Sequential Organ Failure Assessment score, median (IQR)	6 (4–7)	6 (4–7)	6 (4–7)	0.778
Length of ICU stay, h, median (IQR)	134 (98–195)	158 (110–239)	118 (92–161)	< 0.001
Length of hospital stay, d, median (IQR)	29 (21–43)	35 (24–51)	24 (19–34)	< 0.001
Duration of mechanical ventilation, h, median (IQR)	80 (0–137)	88 (0–141)	75 (0–124)	0.144
Delirium				
Patients, n (%)	144 (58)	87 (66)	57 (49)	0.010
Duration of delirium, d, median (IQR)	1 (0–2)	1 (0–3)	0 (0–2)	< 0.001
Neuromuscular blocking agents, n (%)	17 (7)	12 (9)	5 (4)	0.201
Sedative, n (%)	25 (10)	20 (15)	5 (4)	0.005
Steroid, n (%)	76 (31)	44 (33)	32 (28)	0.338
Intra-aortic balloon pumping, n(%)	29 (12)	16 (12)	13 (11)	0.823
Extra corporeal membrane oxygenation, n(%)	7 (3)	5 (4)	2 (2)	0.328
Continuous veno-venous hemofiltration, n(%)	11 (4)	7 (5)	4 (3)	0.479
Physical disability, n (%)	81 (34)	81 (66)	-	
Usual gait speed (m/s), median (IQR)	0.99 (0.76–1.18)	0.74 (0.55–0.95)	1.12 (0.99–1.26)	< 0.001
Cognitive impairment, n (%)	42 (19)	42 (42)	-	
Mini-Cog score, median (IQR)	5 (3–5)	3 (2–5)	5 (4–5)	< 0.001
Depression, n (%)	44 (23)	44 (56)	-	
PHQ-2 score, median (IQR)	1 (0–2)	3 (1–4)	0 (0–2)	< 0.001
Death, n (%)	19 (8)	16 (12)	3 (0)	0.007

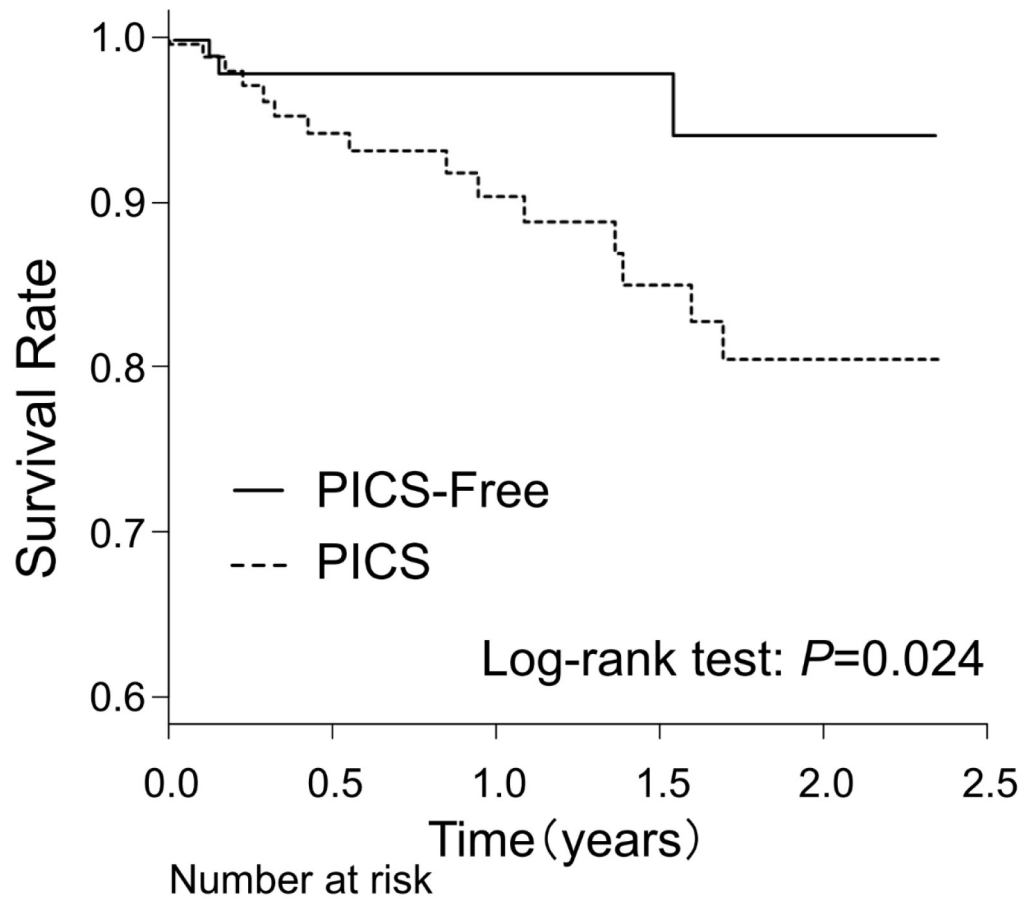
Values are the median (IQR) or % of total.

IQR = interquartile range; APACHE II = Acute Physiology and Chronic Health Evaluation II; ICU = intensive care unit; PHQ = Patient Health Questionnaire.

<https://doi.org/10.1371/journal.pone.0244564.t001>

associated with all-cause mortality after adjusting for covariates (unadjusted: hazard ratio [HR] 3.79, 95% confidence interval [CI] 1.10 – 13.12; $P = 0.035$; adjusted: HR 3.78, 95% CI 1.02 – 13.95; $P = 0.046$).

With regard to the associations between PICS components and mortality, physical disability and cognitive impairment at discharge were shown to be significantly associated with higher rate of all-cause mortality on Kaplan–Meier analysis (log-rank test: $P = 0.001$ and $P = 0.027$, respectively). In contrast, depression at discharge was not significantly associated with mortality (log-rank test: $P = 0.623$) (Fig 3). In the multivariable Cox proportional hazard model, physical disability was significantly associated with all-cause mortality after adjusting for covariates (HR 4.19, 95% CI 1.39–12.59; $P = 0.011$), but cognitive impairment and depression were not significantly associated with all-cause mortality (HR 2.46, 95% CI 0.77–7.84; $P = 0.129$ and HR 1.28, 95% CI 0.30–5.65; $P = 0.743$).



	0.0	0.5	1.0	1.5	2.0	2.5
PICS-Free	116	74	49	27	8	0
PICS	132	90	62	41	24	11

Fig 2. Kaplan–Meier analysis of all-cause mortality according to Post-Intensive Care Syndrome (PICS) components. PICS group, patients with at least one PICS component; PICS-Free group, patients with no PICS components.

<https://doi.org/10.1371/journal.pone.0244564.g002>

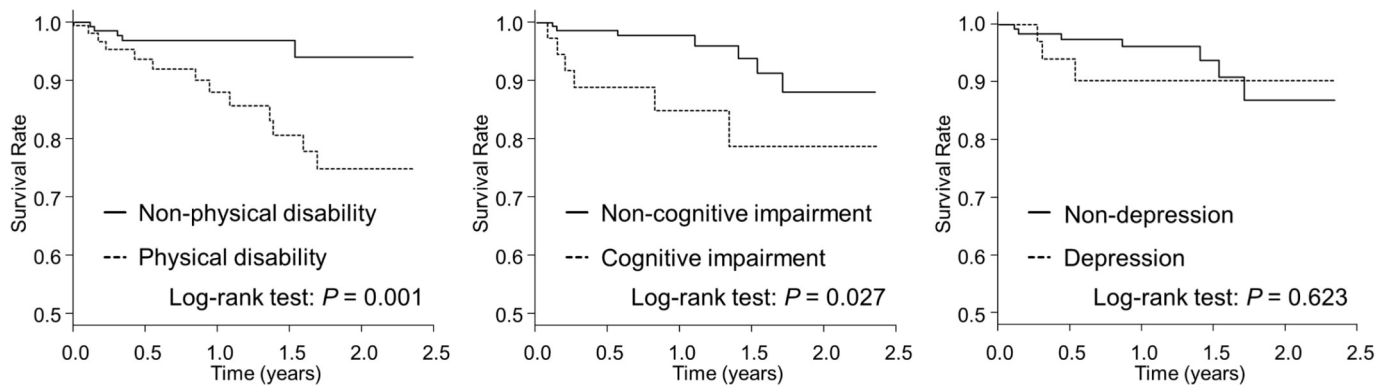


Fig 3. Kaplan–Meier analysis of all-cause mortality according to physical disability, cognitive impairment, and depression. Physical disability was defined as usual gait speed ≤ 0.8 m/s, cognitive impairment by Mini-Cog score ≤ 2 , and depression according to Patient Health Questionnaire-2 (PHQ-2) score ≥ 3 .

<https://doi.org/10.1371/journal.pone.0244564.g003>

Table 2. Association of clinical variables and conditions with each component of post-intensive care syndrome.

Variables	Physical disability			Cognitive impairment			Depression		
	Usual gait speed ≤ 0.8 m/s			Mini-Cog score ≤ 2			PHQ-2 score ≥ 3		
	OR	95% CI	P value	OR	95% CI	P value	OR	95% CI	P value
Age	1.08	1.05–1.12	< 0.001	1.07	1.02–1.11	0.004	1.03	1.00–1.06	0.048
Male	0.82	0.42–1.61	0.573	0.95	0.41–2.18	0.903	1.64	0.70–3.83	0.258
BMI (per 1.0 kg/m ²)	1.05	0.97–1.14	0.244	0.93	0.83–1.05	0.251	0.92	0.82–1.03	0.157
CCI score	1.01	0.86–1.19	0.898	0.98	0.79–1.21	0.826	1.11	0.93–1.35	0.235
APACHE II score	0.99	0.95–1.04	0.938	1.06	1.00–1.12	0.040	0.99	0.94–1.05	0.765
Length of ICU stay (per 1 day)	1.13	1.04–1.22	0.006	1.03	0.94–1.12	0.518	0.96	0.85–1.07	0.447
Length of hospital stay (per 1 day)	1.03	1.01–1.04	0.004	0.97	0.94–0.99	0.022	1.02	0.99–1.04	0.143
Duration of mechanical ventilation (per 1 day)	0.97	0.86–1.09	0.576	1.01	0.88–1.17	0.889	1.13	0.99–1.29	0.056
Duration of delirium (per 1 day)	0.91	0.77–1.07	0.264	1.45	1.18–1.77	< 0.001	0.95	0.80–1.14	0.606

OR = odds ratio. CI = confidence interval. BMI = body mass index, CCI = Charlson Comorbidity index, APACHE II = Acute Physiology and Chronic Health Evaluation II, ICU = Intensive Care Unit.

<https://doi.org/10.1371/journal.pone.0244564.t002>

Predictors of each PICS component

Table 2 shows the results of multivariable logistic regression analysis to predict the occurrence of each PICS component. After adjusting for covariates, increasing age (odds ratio [OR] 1.08, 95% CI 1.05–1.12; $P < 0.001$), longer ICU stay (OR 1.13, 95% CI 1.04–1.22; $P = 0.006$) and longer duration of hospital stay (OR 1.03, 95% CI 1.01–1.04; $P = 0.004$) were independent predictors of the occurrence of physical disability. For cognitive impairment, increasing age (OR 1.07, 95% CI 1.02–1.11; $P = 0.004$), greater severity of illness (OR 1.06, 95% CI 1.00–1.12; $P = 0.040$), longer duration of hospital stay (OR 0.97, 95% CI 0.94–0.99; $P = 0.022$), and for each day of prolonged delirium (OR 1.45, 95% CI 1.18–1.77; $P < 0.001$) were independent predictors. For depression, increasing age (OR 1.03, 95% CI 1.00–1.06; $P = 0.048$) was an independent predictor.

Discussion

This study investigated whether conditions within PICS had similar associations with all-cause mortality in survivors of critical illness. Results demonstrated that having PICS was independently associated with long-term mortality. Among the conditions with PICS, physical disability and cognitive impairment were associated with long-term mortality but not depression. In addition, our results suggest that increasing age is an important independent predictor for each PICS condition.

Physical and mental dysfunction, components of PICS, have been reported to be associated with poor outcomes in critically ill patients [5, 6, 27]. One study showed that PICS, defined by physical disability, cognitive impairment, and depression, occurred at a rate of 56% at 12 months after leaving the ICU [10]. New and worsening physical and mental dysfunction after critical illness were reported to be associated with increased in-hospital and 1-year mortality rates [3–5, 28–30]. To our knowledge, however, there have been no reports regarding the relationship between systematic PICS evaluation and mortality among ICU survivors. In the present study, PICS was associated with a nearly 4-fold increase in mortality risk after adjusting for severity of illness. In addition, physical disability and cognitive impairment following critical illness were also associated with long-term mortality.

Physical disability, as defined by slow gait speed, was shown to be independently associated with increased risk of mortality. Due to population aging, the integration of sarcopenia or

frailty as a vital sign in older patients is becoming increasingly important as a means of guiding management and coordinating clinical care [31]. Sarcopenia/frailty is identified by measuring gait speed [19, 32], which is a suitable functional test for pharmacological trials in older adults. Our recent study in a population of 1474 older patients with cardiovascular disease showed that the prognostic capability of gait speed measurement was comparable to that of the six-minute walking distance [17]. In addition, short-term improvement of gait speed in older patients with acute heart failure while in hospital was significantly associated with reduced risks of death and readmission [33]. Gait speed was reported to be a reliable and valid measure of physical function in acute respiratory distress syndrome patients who survived after hospitalization in the ICU [18]. Changes in gait speed were also reported to be consistent with changes in physical function, and the estimated minimal important difference of gait speed was 0.03 – 0.06 m/s. Gait speed is determined by skeletal muscle mass and muscle strength, and higher values of both were reported to have protective effects against disease [34–40]. In addition, both muscle mass and strength have been shown to be strongly correlated with exercise capacity [17], nutritional status [41], and inflammatory marker levels [42, 43]. Sharshar et al. suggested that the association of muscle weakness with high mortality risk may be explained by increased risk of infections [4]. Taken together, these previous reports and the findings of the present study suggest that physical disability and muscle dysfunction are critically related to prognosis, and support the use of gait speed for assessment of physical disability in critically ill patients and for long-term prognostication at the time of discharge.

Approximately 30% to 80% of ICU survivors show cognitive impairment, which often lasts for many years [6]. Psychiatric conditions, such as anxiety, depression, and post-traumatic stress disorder, have been reported to occur in 7% – 59% of patients, and these may also persist for several years [27, 30, 44, 45]. In our study, cognitive impairment, but not depression, was associated with elevated mortality risk. A number of major risk factors and possibly underlying biological mechanisms for post-ICU cognitive dysfunction have been reported previously. For example, older age [46] and delirium [47] were shown to be the major risk factors associated with the occurrence of long-term cognitive impairment in ICU survivors. Hypoglycemia, hyperglycemia, hypoxaemia, hypotension, and sedation may also be associated with long-term cognitive impairment in such cases [44, 46]. These associations may explain the observed relation between cognitive impairment and prognosis in critically ill patients, and reiterate the importance of developing methods to identify cognitive impairment in ICU survivors.

We identified several potential risk factors for each PICS condition. Increasing age, length of ICU stay, and length of hospital stay were predictors of physical disability; increasing age, severity of illness, length of hospital stay, and duration of delirium were predictors of cognitive impairment; and increasing age was a predictor of depression. Among these factors, an extended length of ICU or hospital stay and delirium prevention may be key targets for reducing the incidence of PICS. Recent clinical trials over the last 10 years have reported that pharmacotherapy and treatment bundles including early ambulation showed positive effects in shortening the length of ICU stay and delirium [48–50]. Furthermore, patients of increasing age may be targeted to enrich future PICS trials or for preferential referral to post-ICU clinics, which may be helpful to ICU survivors.

This study should be considered in the context of several limitations. First, this was a single-center retrospective study. At the same time, we present a large study population with characteristics that are largely generalizable to diverse settings. Second, only patients with cardiovascular disease were included in the present study; however, the existing literature does not suggest that specific critical illness conditions might have different outcomes related to PICS. Third, in the present study, the PHQ-2 was used to assess the mental health component of PICS, which has been shown to be useful as a screening tool for depression [22], but as a

diagnostic tool, further validation is necessary. In addition, we did not assess other mental health measures, such as anxiety and post-traumatic stress disorder, in the present study. Further research on mental health measures is needed. Fourth, since we only assessed delirium during the ICU stay, the impact of delirium persistent after ICU discharge on PICS is unclear. Finally, we did not collect data on other potential confounders, such as preadmission physical activity, exercise capacity, or socioeconomic status.

Conclusions

While PICS as a syndrome has been useful in gaining attention to the sequelae of critical illness, its relationship with long-term mortality is driven largely by physical disability and cognitive impairment and not depression. This heterogeneity suggests that future trials to improve care for patients with PICS should target specific PICS conditions, rather than the PICS syndrome itself.

Acknowledgments

We would like to thank the patients and the research team for their participation in this study.

Author Contributions

Conceptualization: Naoya Yanagi.

Data curation: Naoya Yanagi, Nobuaki Hamazaki, Ryota Matsuzawa, Kohei Nozaki, Takafumi Ichikawa, Takeshi Nakamura, Masashi Yamashita, Emi Maekawa.

Formal analysis: Naoya Yanagi, Kentaro Kamiya, Thomas S. Valley, Takeshi Nakamura.

Methodology: Naoya Yanagi, Kentaro Kamiya, Thomas S. Valley, Tomotaka Koike.

Project administration: Thomas S. Valley.

Supervision: Kentaro Kamiya, Atsuhiko Matsunaga.

Writing – original draft: Naoya Yanagi, Kentaro Kamiya, Thomas S. Valley.

Writing – review & editing: Kentaro Kamiya, Nobuaki Hamazaki, Ryota Matsuzawa, Kohei Nozaki, Takafumi Ichikawa, Thomas S. Valley, Takeshi Nakamura, Masashi Yamashita, Emi Maekawa, Tomotaka Koike, Minako Yamaoka-Tojo, Masayasu Arai, Atsuhiko Matsunaga, Junya Ako.

References

1. Vincent JL, Singer M. Critical care: advances and future perspectives. *Lancet*. 2010; 376(9749):1354–61. [https://doi.org/10.1016/S0140-6736\(10\)60575-2](https://doi.org/10.1016/S0140-6736(10)60575-2) WOS:000283528600039. PMID: 20934211
2. Bemis-Dougherty AR, Smith JM. What Follows Survival of Critical Illness? Physical Therapists' Management of Patients With Post-Intensive Care Syndrome. *Phys Ther*. 2013; 93(2):179–85. <https://doi.org/10.2522/ptj.20110429> WOS:000314203400007. PMID: 22836007
3. Hermans G, Van Mechelen H, Clerckx B, Vanhullebusch T, Mesotten D, Wilmer A, et al. Acute outcomes and 1-year mortality of intensive care unit-acquired weakness. A cohort study and propensity-matched analysis. *Am J Respir Crit Care Med*. 2014; 190(4):410–20. Epub 2014/05/16. <https://doi.org/10.1164/rccm.201312-2257OC> PMID: 24825371.
4. Sharshar T, Bastuji-Garin S, Stevens RD, Durand MC, Malissin I, Rodriguez P, et al. Presence and severity of intensive care unit-acquired paresis at time of awakening are associated with increased intensive care unit and hospital mortality. *Crit Care Med*. 2009; 37(12):3047–53. Epub 2009/09/23. <https://doi.org/10.1097/CCM.0b013e3181b027e9> PMID: 19770751.
5. Wieske L, Dettling-Ihnenfeldt DS, Verhamme C, Nollet F, van Schaik IN, Schultz MJ, et al. Impact of ICU-acquired weakness on post-ICU physical functioning: a follow-up study. *Crit Care*. 2015; 19:196.

- Epub 2015/05/01. <https://doi.org/10.1186/s13054-015-0937-2> PMID: 25928709; PubMed Central PMCID: PMC4427976.
6. Pandharipande PP, Girard TD, Jackson JC, Morandi A, Thompson JL, Pun BT, et al. Long-term cognitive impairment after critical illness. *N Engl J Med*. 2013; 369(14):1306–16. Epub 2013/10/04. <https://doi.org/10.1056/NEJMoa1301372> PMID: 24088092; PubMed Central PMCID: PMC3922401.
 7. Iwashyna TJ, Ely EW, Smith DM, Langa KM. Long-term cognitive impairment and functional disability among survivors of severe sepsis. *JAMA*. 2010; 304(16):1787–94. Epub 2010/10/28. <https://doi.org/10.1001/jama.2010.1553> PMID: 20978258; PubMed Central PMCID: PMC3345288.
 8. Needham DM, Davidson J, Cohen H, Hopkins RO, Weinert C, Wunsch H, et al. Improving long-term outcomes after discharge from intensive care unit: report from a stakeholders' conference*. *Crit Care Med*. 2012; 40(2):502–9. Epub 2011/09/29. <https://doi.org/10.1097/CCM.0b013e318232da75> PMID: 21946660.
 9. Elliott D, Davidson JE, Harvey MA, Bemis-Dougherty A, Hopkins RO, Iwashyna TJ, et al. Exploring the scope of post-intensive care syndrome therapy and care: engagement of non-critical care providers and survivors in a second stakeholders meeting. *Crit Care Med*. 2014; 42(12):2518–26. Epub 2014/08/02. <https://doi.org/10.1097/CCM.0000000000000525> PMID: 25083984.
 10. Marra A, Pandharipande PP, Girard TD, Patel MB, Hughes CG, Jackson JC, et al. Co-Occurrence of Post-Intensive Care Syndrome Problems Among 406 Survivors of Critical Illness. *Crit Care Med*. 2018; 46(9):1393–401. Epub 2018/05/23. <https://doi.org/10.1097/CCM.0000000000003218> PMID: 29787415; PubMed Central PMCID: PMC6095801.
 11. Charlson ME, Pompei P, Ales KL, MacKenzie CR. A new method of classifying prognostic comorbidity in longitudinal studies: development and validation. *J Chronic Dis*. 1987; 40(5):373–83. Epub 1987/01/01. [https://doi.org/10.1016/0021-9681\(87\)90171-8](https://doi.org/10.1016/0021-9681(87)90171-8) PMID: 3558716.
 12. Knaus WA, Draper EA, Wagner DP, Zimmerman JE. APACHE II: a severity of disease classification system. *Crit Care Med*. 1985; 13(10):818–29. Epub 1985/10/01. PMID: 3928249.
 13. Vincent JL, Moreno R, Takala J, Willatts S, De Mendonca A, Bruining H, et al. The SOFA (Sepsis-related Organ Failure Assessment) score to describe organ dysfunction/failure. On behalf of the Working Group on Sepsis-Related Problems of the European Society of Intensive Care Medicine. *Intensive Care Med*. 1996; 22(7):707–10. Epub 1996/07/01. <https://doi.org/10.1007/BF01709751> PMID: 8844239.
 14. Ely EW, Inouye SK, Bernard GR, Gordon S, Francis J, May L, et al. Delirium in mechanically ventilated patients: validity and reliability of the confusion assessment method for the intensive care unit (CAM-ICU). *JAMA*. 2001; 286(21):2703–10. Epub 2001/12/26. <https://doi.org/10.1001/jama.286.21.2703> PMID: 11730446.
 15. Deveney TK, Belnap BH, Mazumdar S, Rollman BL. The prognostic impact and optimal timing of the Patient Health Questionnaire depression screen on 4-year mortality among hospitalized patients with systolic heart failure. *Gen Hosp Psychiatry*. 2016; 42:9–14. Epub 2016/09/18. <https://doi.org/10.1016/j.genhosppsych.2016.06.005> PMID: 27638965; PubMed Central PMCID: PMC5088502.
 16. Culley DJ, Flaherty D, Fahey MC, Rudolph JL, Javedan H, Huang CC, et al. Poor Performance on a Preoperative Cognitive Screening Test Predicts Postoperative Complications in Older Orthopedic Surgical Patients. *Anesthesiology*. 2017; 127(5):765–74. Epub 2017/09/12. <https://doi.org/10.1097/ALN.0000000000001859> PMID: 28891828; PubMed Central PMCID: PMC5657553.
 17. Kamiya K, Hamazaki N, Matsue Y, Mezzani A, Corra U, Matsuzawa R, et al. Gait speed has comparable prognostic capability to six-minute walk distance in older patients with cardiovascular disease. *Eur J Prev Cardiol*. 2018; 25(2):212–9. Epub 2017/10/11. <https://doi.org/10.1177/2047487317735715> PMID: 28990422.
 18. Chan KS, Aronson Friedman L, Dinglas VD, Hough CL, Morris PE, Mendez-Tellez PA, et al. Evaluating Physical Outcomes in Acute Respiratory Distress Syndrome Survivors: Validity, Responsiveness, and Minimal Important Difference of 4-Meter Gait Speed Test. *Crit Care Med*. 2016; 44(5):859–68. Epub 2016/03/11. <https://doi.org/10.1097/CCM.0000000000001760> PMID: 26963329; PubMed Central PMCID: PMC5206972.
 19. Chen LK, Liu LK, Woo J, Assantachai P, Auyeung TW, Bahyah KS, et al. Sarcopenia in Asia: consensus report of the Asian Working Group for Sarcopenia. *J Am Med Dir Assoc*. 2014; 15(2):95–101. Epub 2014/01/28. <https://doi.org/10.1016/j.jamda.2013.11.025> PMID: 24461239.
 20. Borson S, Scanlan J, Brush M, Vitaliano P, Dokmak A. The mini-cog: a cognitive 'vital signs' measure for dementia screening in multi-lingual elderly. *Int J Geriatr Psychiatry*. 2000; 15(11):1021–7. Epub 2000/12/13. [https://doi.org/10.1002/1099-1166\(200011\)15:11<1021::aid-gps234>3.0.co;2-6](https://doi.org/10.1002/1099-1166(200011)15:11<1021::aid-gps234>3.0.co;2-6) PMID: 11113982.
 21. Borson S, Scanlan JM, Watanabe J, Tu SP, Lessig M. Simplifying detection of cognitive impairment: comparison of the Mini-Cog and Mini-Mental State Examination in a multiethnic sample. *J Am Geriatr*

- Soc. 2005; 53(5):871–4. Epub 2005/05/10. <https://doi.org/10.1111/j.1532-5415.2005.53269.x> PMID: 15877567.
22. Whooley MA, Avins AL, Miranda J, Browner WS. Case-finding instruments for depression. Two questions are as good as many. *J Gen Intern Med.* 1997; 12(7):439–45. Epub 1997/07/01. <https://doi.org/10.1046/j.1525-1497.1997.00076.x> PMID: 9229283; PubMed Central PMCID: PMC1497134.
 23. Kroenke K, Spitzer RL, Williams JB. The Patient Health Questionnaire-2: validity of a two-item depression screener. *Med Care.* 2003; 41(11):1284–92. Epub 2003/10/30. <https://doi.org/10.1097/01.MLR.0000093487.78664.3C> PMID: 14583691.
 24. Pedersen AB, Mikkelsen EM, Cronin-Fenton D, Kristensen NR, Pham TM, Pedersen L, et al. Missing data and multiple imputation in clinical epidemiological research. *Clin Epidemiol.* 2017; 9:157–66. Epub 2017/03/30. <https://doi.org/10.2147/CLEP.S129785> PMID: 28352203; PubMed Central PMCID: PMC5358992.
 25. White IR, Royston P, Wood AM. Multiple imputation using chained equations: Issues and guidance for practice. *Stat Med.* 2011; 30(4):377–99. Epub 2011/01/13. <https://doi.org/10.1002/sim.4067> PMID: 21225900.
 26. Bodner TE. What Improves with Increased Missing Data Imputations? *Struct Equ Modeling.* 2008; 15(4):651–75. <https://doi.org/10.1080/10705510802339072> WOS:000260426800005.
 27. Wintermann GB, Brunkhorst FM, Petrowski K, Strauss B, Oehmichen F, Pohl M, et al. Stress disorders following prolonged critical illness in survivors of severe sepsis. *Crit Care Med.* 2015; 43(6):1213–22. Epub 2015/03/12. <https://doi.org/10.1097/CCM.0000000000000936> PMID: 25760659.
 28. Ely EW, Shintani A, Truman B, Speroff T, Gordon SM, Harrell FE Jr., et al. Delirium as a predictor of mortality in mechanically ventilated patients in the intensive care unit. *JAMA.* 2004; 291(14):1753–62. Epub 2004/04/15. <https://doi.org/10.1001/jama.291.14.1753> PMID: 15082703.
 29. Ali NA, O'Brien JM Jr., Hoffmann SP, Phillips G, Garland A, Finley JC, et al. Acquired weakness, hand-grip strength, and mortality in critically ill patients. *Am J Respir Crit Care Med.* 2008; 178(3):261–8. Epub 2008/05/31. <https://doi.org/10.1164/rccm.200712-1829OC> PMID: 18511703.
 30. Hatch R, Young D, Barber V, Griffiths J, Harrison DA, Watkinson P. Anxiety, Depression and Post Traumatic Stress Disorder after critical illness: a UK-wide prospective cohort study. *Crit Care.* 2018; 22(1):310. Epub 2018/11/24. <https://doi.org/10.1186/s13054-018-2223-6> PMID: 30466485; PubMed Central PMCID: PMC6251214.
 31. Forman DE, Alexander KP. Frailty: A Vital Sign for Older Adults With Cardiovascular Disease. *Can J Cardiol.* 2016; 32(9):1082–7. Epub 2016/08/02. <https://doi.org/10.1016/j.cjca.2016.05.015> PMID: 27476987.
 32. Cruz-Jentoft AJ, Bahat G, Bauer J, Boirie Y, Bruyere O, Cederholm T, et al. Sarcopenia: revised European consensus on definition and diagnosis. *Age Ageing.* 2019; 48(4):601. Epub 2019/05/14. <https://doi.org/10.1093/ageing/afz046> PMID: 31081853; PubMed Central PMCID: PMC6593317.
 33. Tanaka S, Kamiya K, Hamazaki N, Matsuzawa R, Nozaki K, Nakamura T, et al. Short-Term Change in Gait Speed and Clinical Outcomes in Older Patients With Acute Heart Failure. *Circ J.* 2019. Epub 2019/07/10. <https://doi.org/10.1253/circj.CJ-19-0136> PMID: 31281168.
 34. De Jonghe B, Bastuji-Garin S, Sharshar T, Outin H, Brochard L. Does ICU-acquired paresis lengthen weaning from mechanical ventilation? *Intensive Care Med.* 2004; 30(6):1117–21. Epub 2004/02/10. <https://doi.org/10.1007/s00134-004-2174-z> PMID: 14767593.
 35. De Jonghe B, Bastuji-Garin S, Durand MC, Malissin I, Rodrigues P, Cerf C, et al. Respiratory weakness is associated with limb weakness and delayed weaning in critical illness. *Critical Care Medicine.* 2007; 35(9):2007–15. <https://doi.org/10.1097/01.ccm.0000281450.01881.d8> WOS:000249038700001. PMID: 17855814
 36. Kamiya K, Masuda T, Tanaka S, Hamazaki N, Matsue Y, Mezzani A, et al. Quadriceps Strength as a Predictor of Mortality in Coronary Artery Disease. *Am J Med.* 2015; 128(11):1212–9. <https://doi.org/10.1016/j.amjmed.2015.06.035> WOS:000363453500036. PMID: 26169888
 37. Kamiya K, Masuda T, Matsue Y, Inomata T, Hamazaki N, Matsuzawa R, et al. Complementary Role of Arm Circumference to Body Mass Index in Risk Stratification in Heart Failure. *Jacc-Heart Fail.* 2016; 4(4):265–73. <https://doi.org/10.1016/j.jchf.2015.11.010> WOS:000373750600005. PMID: 26874391
 38. van Wagenberg L, Witteveen E, Wieske L, Horn J. Causes of Mortality in ICU-Acquired Weakness. *J Intensive Care Med.* 2017; 885066617745818. Epub 2017/12/16. <https://doi.org/10.1177/0885066617745818> PMID: 29241382.
 39. Kamiya K, Masuda T, Matsue Y, Hamazaki N, Matsuzawa R, Tanaka S, et al. Prognostic Usefulness of Arm and Calf Circumference in Patients > = 65 Years of Age With Cardiovascular Disease. *Am J Cardiol.* 2017; 119(2):186–91. <https://doi.org/10.1016/j.amjcard.2016.09.040> WOS:000392896900003. PMID: 27823596

40. Nakamura T, Kamiya K, Matsunaga A, Hamazaki N, Matsuzawa R, Nozaki K, et al. Prognostic usefulness of arm circumference and nutritional screening tools in older patients with cardiovascular disease. *Nutr Metab Cardiovasc*. 2018; 28(7):743–8. <https://doi.org/10.1016/j.numecd.2018.02.015> WOS:000435224800013. PMID: 29650296
41. Fetterplace K, Beach LJ, MacIsaac C, Presneill J, Edbrooke L, Parry SM, et al. Associations between nutritional energy delivery, bioimpedance spectroscopy and functional outcomes in survivors of critical illness. *J Hum Nutr Diet*. 2019. Epub 2019/04/30. <https://doi.org/10.1111/jhn.12659> PMID: 31034122.
42. Beenakker KGM, Ling CH, Meskers CGM, de Craen AJM, Stijnen T, Westendorp RGJ, et al. Patterns of muscle strength loss with age in the general population and patients with a chronic inflammatory state. *Ageing Res Rev*. 2010; 9(4):431–6. <https://doi.org/10.1016/j.arr.2010.05.005> WOS:000282866500006. PMID: 20553969
43. Witteveen E, Wieske L, van der Poll T, van der Schaaf M, van Schaik IN, Schultz MJ, et al. Increased Early Systemic Inflammation in ICU-Acquired Weakness; A Prospective Observational Cohort Study. *Crit Care Med*. 2017; 45(6):972–9. Epub 2017/03/30. <https://doi.org/10.1097/CCM.0000000000002408> PMID: 28350642.
44. Myhren H, Ekeberg O, Toien K, Karlsson S, Stokland O. Posttraumatic stress, anxiety and depression symptoms in patients during the first year post intensive care unit discharge. *Critical Care*. 2010; 14(1). ARTN R14 WOS:000276989800048. <https://doi.org/10.1186/cc8870> PMID: 20144193
45. Vlaek JH, van Genderen ME, Schut A, Verkade M, Wils EJ, Gommers D, et al. Patients suffering from psychological impairments following critical illness are in need of information. *J Intensive Care*. 2020; 8:6. Epub 2020/01/16. <https://doi.org/10.1186/s40560-019-0422-0> PMID: 31938546; PubMed Central PMCID: PMC6953141.
46. Guerra C, Hua M, Wunsch H. Risk of a Diagnosis of Dementia for Elderly Medicare Beneficiaries after Intensive Care. *Anesthesiology*. 2015; 123(5):1105–12. Epub 2015/08/14. <https://doi.org/10.1097/ALN.0000000000000821> PMID: 26270938; PubMed Central PMCID: PMC4618156.
47. Girard TD, Jackson JC, Pandharipande PP, Pun BT, Thompson JL, Shintani AK, et al. Delirium as a predictor of long-term cognitive impairment in survivors of critical illness. *Critical Care Medicine*. 2010; 38(7):1513–20. <https://doi.org/10.1097/CCM.0b013e3181e47be1> WOS:000278920000001. PMID: 20473145
48. Kayambu G, Boots R, Paratz J. Physical therapy for the critically ill in the ICU: a systematic review and meta-analysis. *Crit Care Med*. 2013; 41(6):1543–54. Epub 2013/03/27. <https://doi.org/10.1097/CCM.0b013e31827ca637> PMID: 23528802.
49. Schweickert WD, Pohlman MC, Pohlman AS, Nigos C, Pawlik AJ, Esbrook CL, et al. Early physical and occupational therapy in mechanically ventilated, critically ill patients: A randomized controlled trial. *The Lancet*. 2009; 373(9678):1874–82. [https://doi.org/10.1016/s0140-6736\(09\)60658-9](https://doi.org/10.1016/s0140-6736(09)60658-9)
50. Needham DM, Korupolu R, Zanni JM, Pradhan P, Colantuoni E, Palmer JB, et al. Early physical medicine and rehabilitation for patients with acute respiratory failure: a quality improvement project. *Arch Phys Med Rehabil*. 2010; 91(4):536–42. Epub 2010/04/13. <https://doi.org/10.1016/j.apmr.2010.01.002> PMID: 20382284.