

## RESEARCH ARTICLE

## Genetic liability in individuals at ultra-high risk of psychosis: A comparison study of 9 psychiatric traits

Keane Lim<sup>1</sup>, Max Lam<sup>1,2,3,4</sup>, Hailiang Huang<sup>3,5</sup>, Jianjun Liu<sup>4,6</sup>, Jimmy Lee<sup>1,7,8\*</sup>

**1** Research Division, Institute of Mental Health, Singapore, Singapore, **2** Feinstein Institute of Medical Research, The Zucker Hillside Hospital, New York, New York, United States of America, **3** Stanley Center for Psychiatric Research, The Broad Institute of MIT and Harvard, Cambridge, Massachusetts, United States of America, **4** Genome Institute of Singapore, Singapore, Singapore, **5** Analytic and Translational Genetics Unit, Massachusetts General Hospital, Boston, Massachusetts, United States of America, **6** Yong Loo Lin School of Medicine, National University of Singapore, Singapore, Singapore, **7** Department of Psychosis, Institute of Mental Health, Singapore, Singapore, **8** Neuroscience and Mental Health, Lee Kong Chian School of Medicine, Nanyang Technological University, Singapore, Singapore

\* jimmy\_lee@imh.com.sg



## OPEN ACCESS

**Citation:** Lim K, Lam M, Huang H, Liu J, Lee J (2020) Genetic liability in individuals at ultra-high risk of psychosis: A comparison study of 9 psychiatric traits. PLoS ONE 15(12): e0243104. <https://doi.org/10.1371/journal.pone.0243104>

**Editor:** Sinan Guloksuz, Department of Psychiatry and Neuropsychology, Maastricht University Medical Center, NETHERLANDS

**Received:** July 29, 2020

**Accepted:** November 14, 2020

**Published:** December 2, 2020

**Copyright:** © 2020 Lim et al. This is an open access article distributed under the terms of the [Creative Commons Attribution License](https://creativecommons.org/licenses/by/4.0/), which permits unrestricted use, distribution, and reproduction in any medium, provided the original author and source are credited.

**Data Availability Statement:** All relevant data are within the manuscript and its [Supporting information](#) files.

**Funding:** This study was supported by the National Research Foundation Singapore under the National Medical Research Council Translational and Clinical Research Flagship Programme (Grant No.: NMRC/TCR/003/2008). The funders had no role in study design, data collection and analysis, decision to publish, or preparation of the manuscript.

## Abstract

Individuals at ultra-high risk (UHR) of psychosis are characterised by the emergence of attenuated psychotic symptoms and deterioration in functioning. In view of the high non-psychotic comorbidity and low rates of transition to psychosis, the specificity of the UHR status has been called into question. This study aims to (i) investigate if the UHR construct is associated with the genetic liability of schizophrenia or other psychiatric conditions; (ii) examine the ability of polygenic risk scores (PRS) to discriminate healthy controls from UHR, remission and conversion status. PRS was calculated for 210 youths ( $n_{\text{UHR}} = 102$ ,  $n_{\text{Control}} = 108$ ) recruited as part of the Longitudinal Youth at Risk Study (LYRIKS) using nine psychiatric traits derived from twelve large-scale psychiatric genome-wide association studies as discovery datasets. PRS was also examined to discriminate UHR-Healthy control status, and healthy controls from UHR remission and conversion status. Result indicated that schizophrenia PRS appears to best index the genetic liability of UHR, while trend level associations were observed for depression and cross-disorder PRS. Schizophrenia PRS discriminated healthy controls from UHR ( $R^2 = 7.9\%$ ,  $p = 2.59 \times 10^{-3}$ ,  $OR = 1.82$ ), healthy controls from non-remitters ( $R^2 = 8.1\%$ ,  $p = 4.90 \times 10^{-4}$ ,  $OR = 1.90$ ), and converters ( $R^2 = 7.6\%$ ,  $p = 1.61 \times 10^{-3}$ ,  $OR = 1.82$ ), with modest predictive ability. A trend gradient increase in schizophrenia PRS was observed across categories. The association between schizophrenia PRS and UHR status supports the hypothesis that the schizophrenia polygenic liability indexes the risk for developing psychosis.

**Competing interests:** The authors have declared that no competing interests exist.

## Introduction

The clinical prodromal syndrome of psychosis, variably termed as ultra-high risk (UHR) [1], clinical high risk [2], or at-risk mental states [3,4] was conceptualised nearly two decades ago to identify and intervene in individuals at risk of developing psychosis, with the expectation of preventing, or at least ameliorating, or delaying the full psychotic manifestation and its devastating consequences [4–10]. This criteria applies to help-seeking young individuals presented with either one of three presentations: (i) attenuated psychotic symptoms, (ii) brief or self-limiting full-blown psychotic symptoms, or (iii) significant decrease in functioning in the context of genetic risk for schizophrenia [11–13].

However, the overall specificity of the UHR construct remains unclear, potentially poses challenges in risk stratification and interventions. While the majority of the conversion being schizophrenia spectrum disorder [14], the rates for transition to psychosis in UHR individuals remains modest, ranging from 18% at 6 months to 32% by 3 years [15]. Moreover, a high percentage of UHR individuals reported non-psychotic comorbidity like depression and anxiety [16]. In light of this, the specificity of the UHR construct has been questioned as a risk for psychosis only or risk for developing any psychiatric condition, with some arguing for a reconceptualization of the UHR construct to extend from a psychosis dimension to a general psychopathology model [17–20].

While accumulating evidence have investigated the UHR construct using neurocognition [21–23], neurobiological substrates [24–26] and environmental risk predictors [27], genetic studies in UHR received relatively lesser attention and were mostly limited to candidate genes [28–32].

Recent surge in new data from genome-wide association studies (GWAS) have made leaps in refining our understanding of the complex genetic architecture of psychiatric traits. This was motivated by the potential of genomics to determine the genetic liability of complex traits, unravel the biological mechanisms that could in turn translate into therapeutics, and to identify clinically high-risk individuals before disease manifestation [33,34]. A direct application of GWAS is the construction of polygenic risk scores (PRS), which sums up risk variants identified from GWAS into a continuous genetic liability score [35–38]. The DNA remains constant throughout the life course, making the PRS an alluring target for pre-emptive clinical treatment [39]; considering that early intervention is associated with better prognosis in psychosis [40,41]. It is hoped that PRS could identify individuals at the extremes of the PRS risk distribution [35,42,43] and complement risk enrichment in tandem with clinical and environmental risk factors [44,45].

Previous studies have reported that the schizophrenia PRS identified and discriminated healthy individuals from individuals with first episode psychosis, schizophrenia and other psychoses [46–50]. More recently, Perkins et al (2020) [51] reported that the schizophrenia PRS discriminated psychosis converters from non-converters in an at-risk sample of European ancestry, while He et al (2019) [52] found no association between schizophrenia PRS and conversion to psychosis. Given that the predictive accuracy of PRS is affected by the ancestry of the training and target dataset, systematic evaluation of PRS in diverse samples is needed to enable equitable application of PRS [53–55].

Therefore, the aim of the present study is (i) to clarify the specificity of the UHR construct by investigating if it more closely approximates the genetic architecture of schizophrenia as initially conceptualised, or if UHR represents a general psychopathology vulnerability as indexed by other psychiatric traits; (ii) to evaluate if PRS could discriminate healthy controls from UHR; (iii) to examine the predictive ability of PRS on UHR remission and conversion status.

## Methods

### Participants

The participants were recruited as part of the Longitudinal Youth at Risk Study (LYRIKS) in Singapore. Details of the study have been reported previously [8,16,56,57]. In brief, LYRIKS is a prospective, observational study on youths, aged 14–29 years, at ultra-high risk of developing psychosis. Recruitment adopted a hybrid approach where both help-seeking and non-help-seeking individuals from the community were approached. Participants were recruited through community social service agencies, educational institutes and mental health services from the Institute of Mental Health in Singapore [58].

Participants were ascertained to be UHR via the Comprehensive Assessment of At-Risk Mental States (CAARMS) [59], with at least one of the three criteria met: (1) vulnerability trait for psychotic illness (having a first-degree relative with psychosis or schizotypal personality disorder), (2) attenuated psychotic symptoms (having subthreshold psychotic symptoms in the past year), and (3) brief limited intermittent psychotic symptoms (had a brief psychotic episode that remitted within a week without the use of any antipsychotic medications in the past year, and showed a deterioration in functioning for at least one month in the past year). The exclusion criteria were: (i) current or past history of psychosis or mental retardation, (ii) current use of illicit substances, (iii) taking mood stabilizers, or (iv) had medical causes associated with their symptoms. Psychiatric history was evaluated with the Structured Clinical Interview for DSM-IV Axis I Disorders [60]. Healthy controls were those who did not fulfil the UHR criteria, had no psychiatric disorder, and had no family history of psychosis.

Participants were followed-up at 6-month intervals for up to 24 months, or until conversion to psychosis. Conversion to psychosis was determined by the fulfilment of CAARMS psychotic threshold criteria of at least one full psychotic symptom lasting more than one week and occurring at least three times a week. Remission status was defined as individuals who met UHR criteria at baseline but no longer fulfil UHR criteria at 24 months. Individuals who met UHR criteria at 24 months (i.e., persistent non-remitters) or had converted to psychosis were categorised as non-remitters. Therefore, individuals at UHR of psychosis were categorised as remitters or non-remitters and converters or non-converters.

Ethics approval for this study was provided by the National Healthcare Group's Domain Specific Review Board. Written informed consent was obtained from all participants and consent from a legally acceptable representative was obtained for minors below the age of 21 years as required by the local regulations.

### Genotyping, quality control and imputation

The LYRIKS cohort was genotyped on the Illumina Infinium OmniZhongHua-8 BeadChip. Standard quality control procedures (See [S1 File](#) for details) were performed in PLINK 1.9 [61] to exclude single nucleotide polymorphisms (SNPs) with minor allele frequency (MAF) < 0.01, call rate < 0.98, Hardy-Weinberg equilibrium p-value < 1e-06; and exclude individuals with mismatch between recorded and genotyped sex, and related individuals. Cryptic relatedness was identified with identity by descent method ( $\pi$ -hat > 0.2).

As the LYRIKS cohort consisted of individuals of Han Chinese descent, Malay descent and South Indian descent, population ancestries were verified by conducting principal component analysis against the Singapore Genomic Variation Project (SGVP) [62] and the 1000 Genomes phase 3 reference panel [63]. Samples with more than four standard deviations away from the SGVP reference panel, along the first ten ancestral principal components were excluded ([S1 File](#); S1 and S2 Figs in [S2 File](#)).

Imputation was conducted separately for each ancestry with Minimac3 (MaCH) [64] against the full 1000 genomes phase 3 reference panel [65]. The imputed SNPs underwent the second round of quality control with the same parameters above, and filtered for imputation quality score  $> 0.9$ . The imputed data was merged on shared SNPs for full sample analysis, resulting in a total of 3,349,959 high quality SNPs.

### Polygenic risk scores

Schizophrenia polygenic risk scores (PRS) was calculated for each individual as the weighted sum of risk alleles using GWAS summary statistics from the CLOZUK and Psychiatric Genomics Consortium schizophrenia wave-2 meta-analysis (CLOZUK-PGC2) [66] and the PGC East-Asian schizophrenia meta-analysis (PGC SCZ-EAS) [53] as discovery samples.

PRS was also calculated using GWAS summary statistics of eight psychiatric traits: major depressive disorder (MDD) [67–69], bipolar disorder [70], anxiety disorder [71], obsessive-compulsive disorder [72], anorexia nervosa [73], autism spectrum disorder [74], attention deficit hyperactivity disorder [75] and cross-disorder [76]. For MDD, PRS was calculated using three discovery datasets, denoted here as MDD-2013 [67], MDD-Converge [68], and MDD-2019 [69], to examine its predictive ability based on the different ancestry and MDD phenotypic definition employed in these GWAS studies. The MDD-2013 and MDD-Converge ascertained MDD based on clinically derived DSM diagnostic criteria, while the MDD-2019 utilised a mix of self-reported and full diagnostic criteria. The MDD-2013 and MDD-2019 were conducted in samples of European ancestry, while the MDD-Converge was conducted in East-Asian samples.

To select the most informative and independent markers, the following parameters were performed for each summary statistic: p-value informed clumping of  $r^2 > 0.1$  with 500kb windows; EUR and EAS individuals from the 1000 genomes phase 3 were extracted as LD reference panel for clumping variants in the respective summary statistics; SNPs in the major histocompatibility complex (MHC; chr6:25–35Mb) were removed due to the complex linkage disequilibrium pattern in this region; and only SNPs with imputation quality score  $> 0.9$  were selected.

PRS were calculated for ten p-value thresholds ( $P_T \leq 5 \times 10^{-08}$ ,  $1 \times 10^{-05}$ ,  $1 \times 10^{-04}$ ,  $1 \times 10^{-03}$ , 0.01, 0.05, 0.1, 0.2, 0.5, 1). PRS were standardised using means and standard deviations from healthy controls. The PRS were constructed using PRSice-2 [77,78].

Power calculation for PRS was implemented in R package 'AVENGEME' [79,80], and the genetic covariance and proportion of variance explained by genetic effects were estimated with the package. Prevalence was assumed to be 0.01 [81,82].

### Statistical analysis

To investigate the genetic liability of the UHR construct, PRS calculated using summary statistics derived from GWAS of schizophrenia and eight other psychiatric traits were performed using logistic regression with the first ten ancestral principal components, age and gender as covariates on UHR-Healthy control status. The proportion of variance explained by PRS was calculated with Nagelkerke's pseudo- $R^2$ , by comparing the full model (i.e., PRS with covariates) with the reference model (i.e., covariates only). A Bonferroni correction of  $p = 0.0042$  (0.05/12 GWAS discovery dataset) was applied.

Ordinal logistic regression was performed to examine if PRS was associated with remission (Healthy controls x Remitters x Non-remitters) or conversion to psychosis (Healthy controls x Non-converters x Converters), adjusted for the first ten ancestral principal components, age and gender.

The discriminatory power of the PRS was investigated with the area under the receiver operator curve (AUC), using the best fit p-value threshold model, and compared with a reference model (i.e., covariates only) and a full model (i.e., PRS and covariates). To aid the visualisation of PRS distribution, the sample was divided into quintiles by PRS, and estimated for UHR-Healthy control odds ratio (OR) and 95% confidence interval. This analysis was also adjusted for the first ten ancestral principal components, age and gender.

These statistical analyses were performed on IBM SPSS version 23 [83] and figures were plotted in R v3.4.3 packages [84–86].

## Results

### Sample characteristics

The study sample characteristics are presented in Table 1. A total of 210 individuals ( $n_{\text{UHR}} = 102$ ,  $n_{\text{Control}} = 108$ ) were available for analysis after quality control procedures (See S1 File for details). Within UHR, 49 (48%) were remitters and 53 (52%) were non-remitters; 90 (88.2%) were non-converters and 12 (11.8%) were converters.

### Genetic liability of UHR with schizophrenia PRS and other psychiatric traits

The genetic liability of the UHR status examined using the Han Chinese group, the largest ethnic group in this cohort, revealed that the schizophrenia PRS best discriminated UHR-Healthy control status (Fig 1). Amongst the other psychiatric traits, only the MDD-2019 and cross-disorder showed trend level associations, with increasing variance explained as the number of SNPs increased across the p-value thresholds (Fig 1). As the PGC SCZ-EAS PRS showed better discrimination in our Asian sample, compared to the CLOZUK-PGC2 PRS (Fig 1; S1–S3 Tables in S3 File), subsequent analyses described herein used the PGC SCZ-EAS PRS.

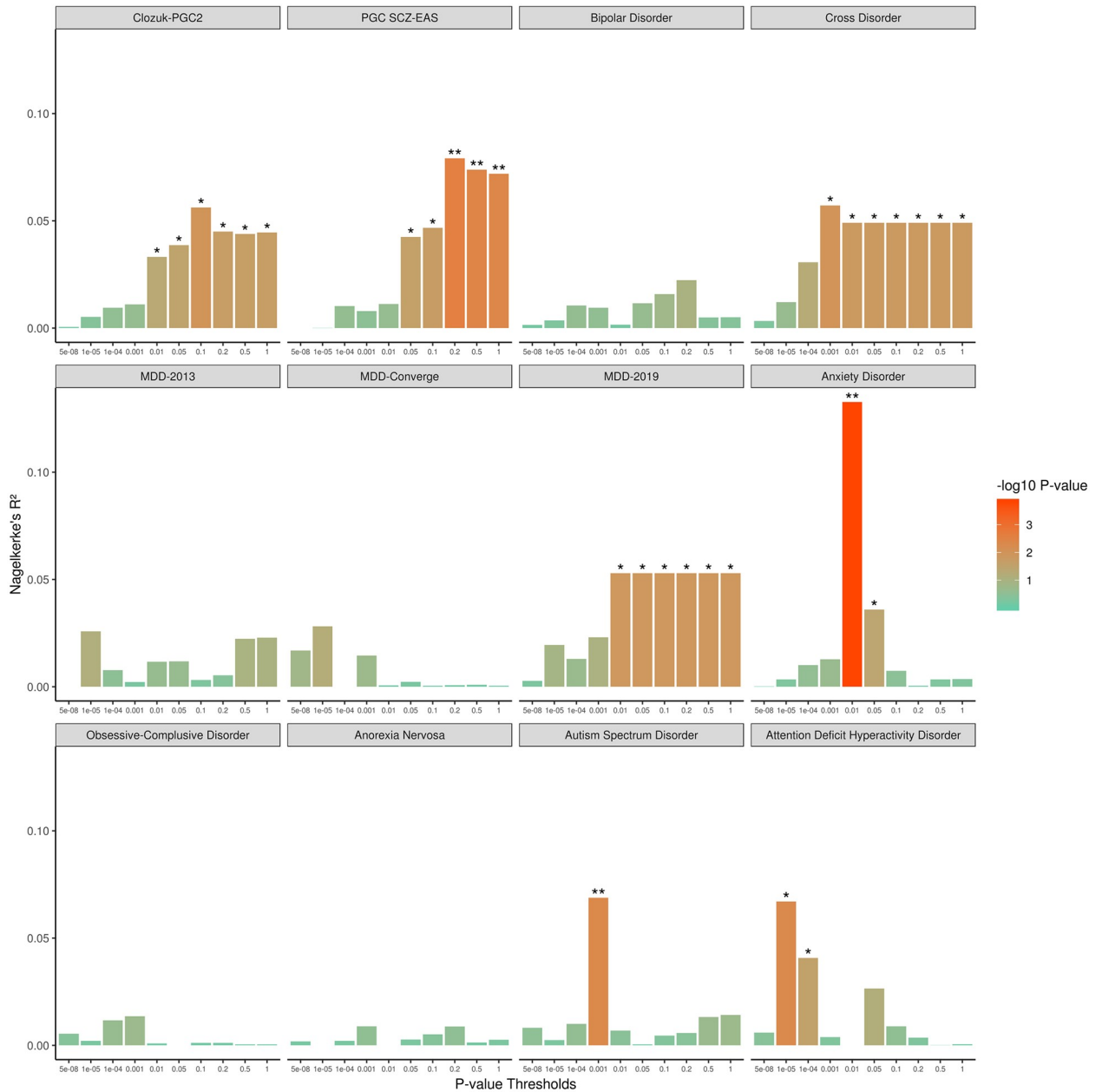
The association of the PGC SCZ-EAS PRS and UHR-Healthy control status was further examined using the total sample and stratified sample. Significant differences in PGC SCZ-EAS PRS were observed between UHR-Healthy control status ( $p = 0.001$ ) (Fig 2). In the total sample, the PGC SCZ-EAS PRS discriminated UHR-Healthy control status (Nagelkerke's  $R^2 = 5.1\%$ ,  $p = 4.17 \times 10^{-3}$ ,  $p_T = 1$ , OR = 1.96, 95% CI = 1.24–3.11) (S1 and S2 Tables in S3 File). Further UHR-Healthy control analysis based on stratification by the two major ethnic group within the cohort revealed that the PGC SCZ-EAS PRS was predictive of UHR-Healthy control status in individuals of Han Chinese descent (Nagelkerke's  $R^2 = 7.9\%$ ,  $p = 2.59 \times 10^{-3}$ ,  $p_T = 0.2$ , OR = 1.82, 95% CI = 1.23–2.69, power = 0.79; Fig 1), but was not associated with UHR-Healthy control status in individuals of Malay ancestry, after accounting for Bonferroni

**Table 1. Sample characteristics across groups.**

	Healthy Controls	UHR	Remitters	Non-remitters	Persistent Non-remitters	Non-Converters	Converters
N	108	102	49	53	41	90	12
Age, years	22.07 (3.48)	21.84 (3.61)	21.65 (3.49)	22.02 (3.75)	22.22 (3.88)	21.91 (3.66)	21.33 (3.31)
Gender (M/F)	69/39	71/31	32/17	39/14	29/12	61/29	10/2
Ethnicity							
Chinese	74 (68.5)	77 (75.5)	34 (69.4)	43 (81.1)	35 (85.4)	69 (76.7)	8 (66.7)
Malay	22 (20.4)	19 (18.6)	12 (24.5)	7 (13.2)	3 (7.3)	15 (16.7)	4 (33.3)
Indian	12 (11.1)	6 (5.9)	3 (6.1)	3 (5.7)	3 (7.3)	6 (6.7)	0 (0)

Note. UHR = Ultra high risk to psychosis; M/F = Males/Females Values in cells represent mean (SD) or n (%), unless otherwise stated.

<https://doi.org/10.1371/journal.pone.0243104.t001>

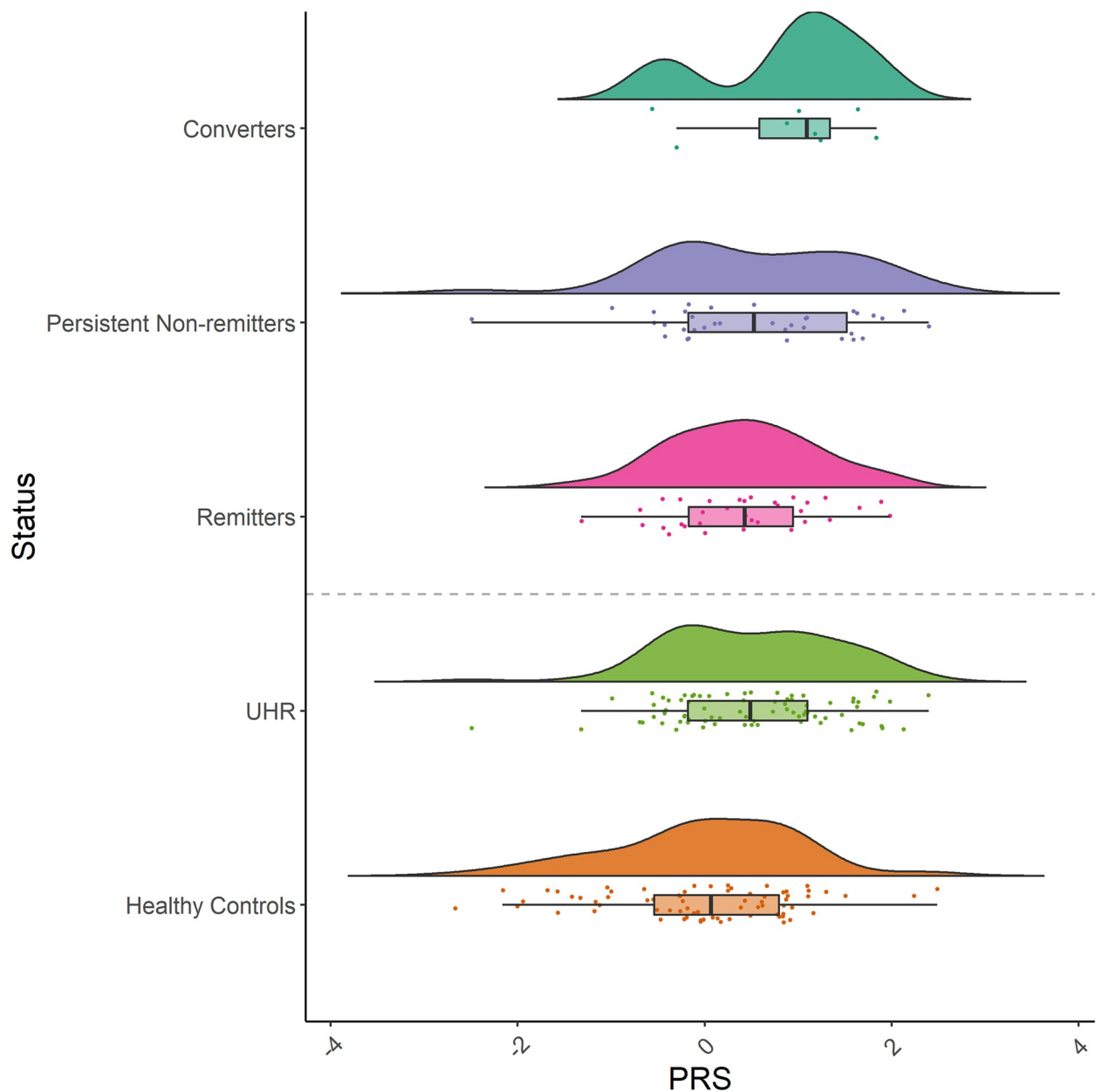


**Fig 1. Polygenic prediction of psychiatric traits with UHR-Healthy control status in Han Chinese.** Note. \*Unadjusted p-value < 0.05. \*\*Bonferroni correct p-value significance.

<https://doi.org/10.1371/journal.pone.0243104.g001>

correction of  $p = 0.008$  ( $0.05/6$  leave-one-out iterations) (S1 and S2 Tables in [S3 File](#)). Additional leave-one-out analysis indicated that the PGC SCZ-EAS PRS showed better predictive ability in individuals of Han Chinese descent compared to other ethnicities in this cohort (S1 and S2 Tables in [S3 File](#)).

To rule out the possibility that the UHR-Healthy control association observed was driven by the subgroup of converters which have the highest mean PRS, a sensitivity analysis of UHR-Healthy control was performed by removing this subgroup of converters from the UHR



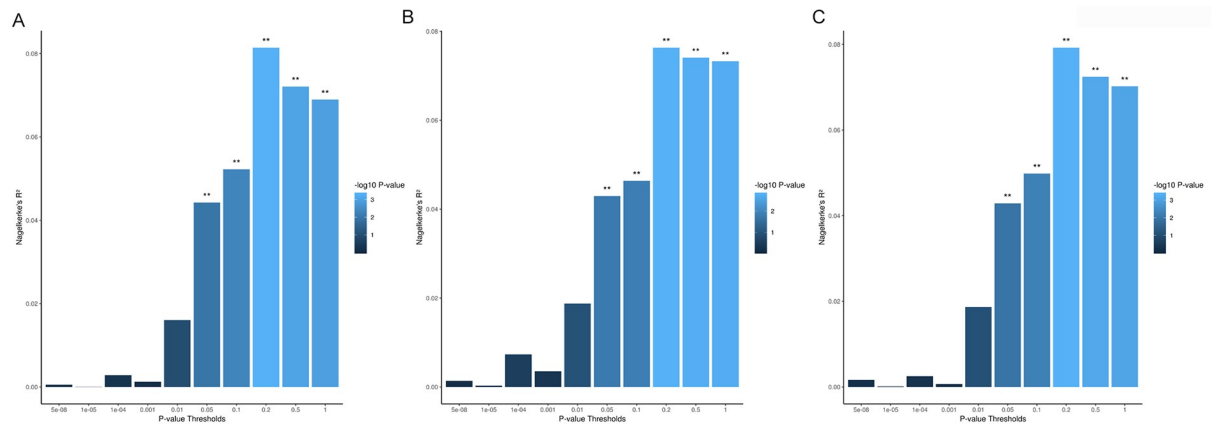
**Fig 2. Raincloud plot of PGC SCZ-EAS standardized polygenic risk scores (PRS) in the Han Chinese group.** Raincloud plots are presented for healthy controls, UHR, remission and conversion status. The raincloud plot aids data visualisation by combining a split-half violin plot, raw jittered data points, and central tendency of median through a boxplot.

<https://doi.org/10.1371/journal.pone.0243104.g002>

sample. Results indicated that PRS still discriminated UHR-Healthy control status without the converters subgroup, with a similar pattern of association (S4 Table in [S3 File](#)).

### Schizophrenia PRS associations with remission status

PRS discriminated healthy controls from remission status (Nagelkerke  $R^2 = 8.1\%$ ,  $p = 4.90 \times 10^{-4}$ ,  $p_T = 0.2$ , OR = 1.90, 95% CI = 0.28–1.00) ([Fig 3A](#); S5 Table in [S3 File](#)). PRS was higher in non-remitters, followed by remitters, then controls ([Fig 2](#); S3 Fig in [S2 File](#)). Post-hoc analysis



**Fig 3. Proportion of variance explained by PGC SCZ-EAS polygenic risk scores (PRS) in the Han Chinese.** (A) Healthy controls vs remission status. (B) Healthy controls vs conversion status. (C) Healthy controls vs remitters vs persistent non-remitters vs converters. Note. \*\*P-value significance < 0.05.

<https://doi.org/10.1371/journal.pone.0243104.g003>

indicated significant difference in PRS between non-remitters and controls ( $p = 0.004$ ), but not between remitters and controls ( $p = 0.09$ ), and within UHR ( $p > 0.05$ ).

### Schizophrenia PRS associations with conversion status

PRS discriminated healthy controls from conversion status (Nagelkerke  $R^2 = 7.6\%$ ,  $p = 1.61 \times 10^{-3}$ ,  $p_T = 0.2$ , OR = 1.82, 95% CI = 0.23–0.98) (Fig 3B; S6 Table in S3 File). PRS was higher in converters, followed by non-converters, then controls (Fig 2; S3 Fig in S2 File). Post-hoc analysis indicated significant difference in PRS between converters and controls ( $p = 0.04$ ), and non-converters and controls ( $p = 0.01$ ). No difference was observed within UHR ( $p > 0.05$ ).

### Schizophrenia PRS associations with remission and conversion status

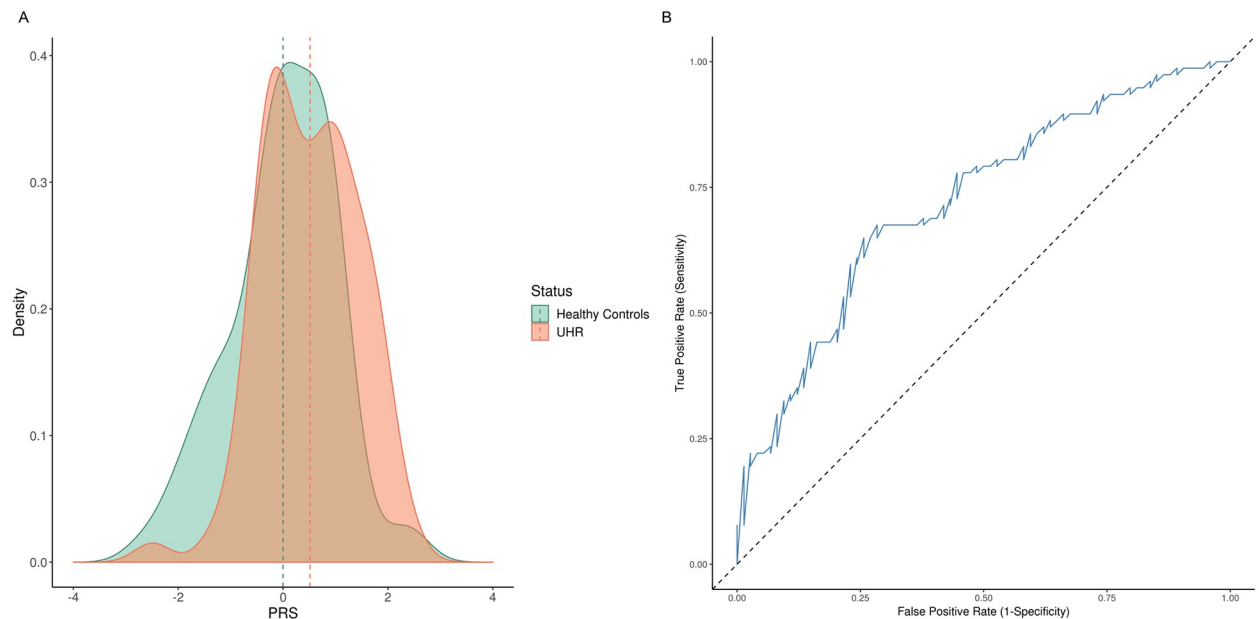
To further evaluate the associations found between healthy controls with remission and conversion status, an additional secondary analysis was performed. The non-remitters group was re-categorised as persistent non-remitters (i.e., individuals who still met UHR criteria at 24 months, but did not convert to psychosis) and converters. Ordinal logistic regression (Healthy controls x Remitters x Persistent non-remitters x Converters) revealed PRS discriminated these categories (Nagelkerke  $R^2 = 7.9\%$ ,  $p = 4.57 \times 10^{-4}$ ,  $p_T = 0.2$ , OR = 1.89, 95% CI = 0.28–0.99) (Fig 3C; S7 Table in S3 File). PRS was higher in converters, followed by persistent non-remitters, remitters, then healthy controls (Fig 2).

### Predictive ability of schizophrenia PRS

AUC analysis on the discriminatory ability of PRS on UHR-Healthy control status was 0.67 in the reference model. The AUC increased to 0.72 when PRS was added to the model (Fig 4). In a series of AUC analyses, the discriminatory ability of PRS was also compared between healthy controls with remitters (AUC = 0.69), persistent non-remitters (AUC = 0.78) and converters (AUC = 0.93) in the full model.

To investigate the effect of PRS on UHR status, the sample was divided into quintiles based on PRS profile and UHR-Healthy control OR was calculated with the middle quintile as reference. A trend increase in risk of UHR status was observed with greater PRS (S4 Fig in S2 File; S8 Table in S3 File). Compared to the middle quintile, individuals in the fifth quintile had the





**Fig 4. Discriminatory ability of polygenic risk scores (PRS) in Han Chinese case-controls individuals.** (A) Density distribution plot. (B) Area under curve (AUC) plot. Vertical dotted lines in panel (A) present mean PRS for each status.

<https://doi.org/10.1371/journal.pone.0243104.g004>

highest OR (OR = 2.4, 95% CI = 0.71–8.44), while individuals in the first quintile had the lowest OR (OR = 0.48, 95% CI = 0.12–1.82). Generally, the UHR-Healthy control ratio and percentage of non-remitters and converters increased across PRS quintiles (S5 Fig in [S2 File](#); S9 Table in [S3 File](#)).

## Discussion

This study utilised the PRS to examine the genetic liability of UHR and its predictive ability. Our results showed that the East-Asian schizophrenia PRS, amongst other psychiatric traits, appears to best approximate the genetic liability of UHR, and discriminated healthy controls from UHR individuals, remission status and conversion status in our cohort.

Polygenic prediction with eight other psychiatric traits [67–75] did not discriminate UHR-Healthy control status, following multiple corrections. Amongst these psychiatric traits, the MDD-2019 [69] and cross-disorder [76] were most predictive of UHR-Healthy control status, showing comparable variance explained to that of CLOZUK-PGC2 [66]. However, this was not observed in the MDD-2013 [67] and MDD-Converge [68] PRS. A plausible explanation for the differences in MDD predictive ability could be attributed to phenotypic definition of MDD employed in the GWAS analysis, where MDD-2019 included a broad phenotyping definition of MDD, while MDD-2013 and MDD-Converge employed a strict phenotyping definition based on full diagnostic criterion of MDD. Moreover, it has been recently suggested that the broad phenotyping definition of MDD indexes a general vulnerability to poor mental health, rather than specific to MDD alone [87,88]. Given the high prevalence of comorbidity and manifestation of non-psychotic symptoms in the UHR population [16], it is speculated that the trend UHR-Healthy control status discriminated by MDD-2019 could be driven by a vulnerability to general psychopathology in the UHR group.

Nevertheless, the results of the current study appear to suggest that the UHR construct could be indexed by liability for schizophrenia, while further clarification is needed on how

MDD or general psychopathology is related to the UHR construct. This, however, is caveated by the differing sample size and ancestry in the discovery dataset, requiring further replication. Moreover, the association between the genetic liability for these psychiatric traits and the variation in manifestation of psychotic and non-psychotic symptoms, its onset and trajectory remains to be explored in the UHR population.

The PRS explained 7.9% of the variance in our Han Chinese UHR-Healthy control analysis. This is comparable with previous studies on European ancestry which reported that schizophrenia PRS explained 9.4% variance in first episode psychosis [47] and 9% in psychotic disorders [46], and 9.4% variance on the liability scale in a UHR sample [51]. Further stratification of UHR for remission and conversion status revealed that PRS was associated with UHR status and its subgroups when compared to healthy controls. Within UHR, while there were no significant differences in PRS between remitters and non-remitters, and converters and non-converters, genetic heterogeneity between these categories is suggestive. Particularly, across categories, a gradient increase in mean PRS was observed from controls, to remitters, to converters. This graded pattern of PRS across categories is intuitive, plausibly reflecting the degree of schizophrenia genetic liability with risk of developing psychosis. This PRS dosage effect is congruent with that reported previously in a UHR European sample [51]. Alternatively, the lack of significant separation in PRS within UHR categories may be moderated by environmental risk factors or endophenotypes that may not otherwise be captured by genetic loci derived from a case-control GWAS [89]. Further evaluation of the risk or protective factors underpinning remission or conversion status through interactions between PRS and environmental factors, and how it exerts on the expression of endophenotypes remains to be elucidated [27,90]. Additionally, the interaction between gene and environment, not otherwise captured by a case-control GWAS loci, such as methylation changes [91,92] or blood-based gene expression signatures [93,94] may complement UHR and conversion to psychosis predictability.

Consistent with the literature on the discriminative accuracy of PRS in psychiatry [46,49], a moderate AUC of 0.72 was observed in the current study. This is in contrast to potential clinical utility of PRS reported for common diseases [95]. While the current predictive power precludes the use of PRS for clinical practice in psychiatry, findings of the current study showed promise on the potential utility of PRS in identifying strata of individuals at greater risk of developing psychosis. Specifically, a higher percentage of remitters and converters were reported at the higher extreme of the PRS distribution. This subgroup of individuals could benefit from prioritising treatment plans. Moreover, as the sample size of discovery dataset and yet to be identified rare and common variants increase, the refinement of the PRS is expected [35,79]. PRS prediction models could also be optimised with the inclusion of environmental variables related to the phenotype of interest [96].

Differences in PRS discriminative ability was evident across discovery samples. Consistent with a previous study [53], the PRS performance in our Asian cohort was better with the PGC SCZ-EAS than the CLOZUK-PGC2. Moreover, while limited by the small sample size of each ethnicity in our cohort, PRS models mainly explained variance in individuals of Han Chinese descent but was poor for other ethnic groups, albeit larger sample size of the Han Chinese descent relative to the other ethnic groups. Future studies with larger samples of other ethnic groups are warranted to further examine the predictability of PRS in these ethnic groups. Despite the larger discovery sample size of the CLOZUK-PGC2 compared to the PGC SCZ-EAS, differences in PRS predictive ability could be attributed to differences in allele frequency distributions and LD structures across ancestry [53]. This finding further highlights the importance of greater ancestry diversity in genetic studies, so as to optimise the envisioned potential of PRS [55].

## Strengths and limitations

This cohort of UHR is unique in that individuals were antipsychotic naïve and free of illicit substance use [8], which may otherwise mar the association between status and PRS. The investigation of UHR individuals here extends previous knowledge on how schizophrenia PRS indexes the liability for psychosis across the psychosis spectrum, from prodromal phase as evaluated in the current study, to eventual diagnosis of schizophrenia or psychosis investigated previously [46,47,49]. Nevertheless, further research on the generalisability of these findings to other ethnicities is warranted as our cohort is relatively small and composed of Asian individuals.

However, it should be noted that the conversion rate is low. In the Han Chinese subgroup, only 8 (10.4%) UHR individuals converted to psychosis. This may have limited the variation in severity which could contribute to the lack of clear PRS delineation within UHR. Moreover, while this cohort was followed-up longitudinally for 24 months, a longer prospective follow-up could further refine the UHR remission and conversion status, particularly if subgroups of non-remitter converted to psychosis, or if remitters met criteria for UHR again.

Additionally, the number of variants in the genotyping array could influence the PRS predictive power. Given that the array used in this study provides better coverage for the Han Chinese group compared to the Malay or Indian ethnic groups, genotyping array with wider coverage for the Malay and Indian ethnic groups is needed to examine the generalisability of PRS prediction in these groups.

The results of this study should also be interpreted with the following caveats. First, apart from PGC SCZ-EAS and MDD-Converge, all other discovery datasets were of European ancestry. Therefore, no definitive conclusion may be drawn from the lack of associations between our Asian UHR sample and some other psychiatric traits. Second, the differing sample size in the discovery and target datasets may influence the discriminative power to detect PRS associations with the current UHR sample. Future studies with diverse ancestry discovery datasets and larger target datasets are warranted to examine and replicate these findings.

## Conclusions

This study supported the hypothesis that the UHR status appears to more closely approximate schizophrenia risk than other psychiatric traits. The schizophrenia PRS also discriminated healthy controls from UHR status, showing a trend gradient of schizophrenia polygenic liability across remission and conversion status. Further research on stratification of these individuals could potentially facilitate genomics as a tool in the precision medicine toolbox for psychiatry. However, our study highlighted a need to study PRS in diverse ancestries to enable equitable application of PRS in identifying UHR individuals.

## Supporting information

### S1 File.

(DOCX)

### S2 File.

(DOCX)

### S3 File.

(XLSX)

## Acknowledgments

The authors wish to thank all study participants. The authors wish to thank all research psychologist and research coordinators for performing subject recruitment and data collection.

## Author Contributions

**Conceptualization:** Keane Lim, Jianjun Liu, Jimmy Lee.

**Data curation:** Keane Lim, Max Lam.

**Formal analysis:** Keane Lim.

**Funding acquisition:** Jimmy Lee.

**Supervision:** Jianjun Liu, Jimmy Lee.

**Writing – original draft:** Keane Lim.

**Writing – review & editing:** Keane Lim, Max Lam, Hailiang Huang, Jianjun Liu, Jimmy Lee.

## References

1. Yung AR, Phillips LJ, Yuen HP, Francey SM, McFarlane CA, Hallgren M, et al. Psychosis prediction: 12-month follow up of a high-risk (“prodromal”) group. *Schizophr Res.* 2003; 60: 21–32. [https://doi.org/10.1016/s0920-9964\(02\)00167-6](https://doi.org/10.1016/s0920-9964(02)00167-6) PMID: 12505135
2. Cornblatt B, Lencz T, Obuchowski M. The schizophrenia prodrome: treatment and high-risk perspectives. *Schizophr Res.* 2002; 54: 177–186. [https://doi.org/10.1016/s0920-9964\(01\)00365-6](https://doi.org/10.1016/s0920-9964(01)00365-6) PMID: 11853992
3. Broome MR, Woolley JB, Johns LC, Valmaggia LR, Tabraham P, Gafoor R, et al. Outreach and support in south London (OASIS): implementation of a clinical service for prodromal psychosis and the at risk mental state. *Eur Psychiatry.* 2005; 20: 372–378. <https://doi.org/10.1016/j.eurpsy.2005.03.001> PMID: 16171652
4. Yung AR, McGorry PD, McFarlane CA, Jackson HJ, Patton GC, Rakkar A. Monitoring and care of young people at incipient risk of psychosis. *Schizophr Bull.* 1996; 22: 283–303. <https://doi.org/10.1093/schbul/22.2.283> PMID: 8782287
5. Cannon TD, Cadenhead K, Cornblatt B, Woods SW, Addington J, Walker E, et al. Prediction of psychosis in youth at high clinical risk: a multisite longitudinal study in North America. *Arch Gen Psychiatry.* 2008; 65: 28–37. <https://doi.org/10.1001/archgenpsychiatry.2007.3> PMID: 18180426
6. Jørgensen P, Nordentoft M, Abel MB, Gouliav G, Jeppesen P, Kasso P. Early detection and assertive community treatment of young psychotics: the Opus Study Rationale and design of the trial. *Soc Psychiatry Psychiatr Epidemiol.* 2000; 35: 283–287. <https://doi.org/10.1007/s001270050240> PMID: 11016522
7. Lam MML, Hung S-F, Chen EYH. Transition to psychosis: 6-month follow-up of a Chinese high-risk group in Hong Kong. *Aust N Z J Psychiatry.* 2006; 40: 414–420. <https://doi.org/10.1080/j.1440-1614.2006.01817.x> PMID: 16683967
8. Lee J, Rekihi G, Mitter N, Bong YL, Kraus MS, Lam M, et al. The longitudinal youth at risk study (LYRIKS)—an Asian UHR perspective. *Schizophr Res.* 2013; 151: 279–283. <https://doi.org/10.1016/j.schres.2013.09.025> PMID: 24139196
9. Nelson B, Yuen HP, Wood SJ, Lin A, Spiliotacopoulos D, Bruxner A, et al. Long-term follow-up of a group at ultra high risk (“prodromal”) for psychosis: the PACE 400 study. *JAMA Psychiatry.* 2013; 70: 793–802. <https://doi.org/10.1001/jamapsychiatry.2013.1270> PMID: 23739772
10. Ruhrmann S, Schultze-Lutter F, Salokangas RKR, Heinimaa M, Linszen D, Dingemans P, et al. Prediction of psychosis in adolescents and young adults at high risk: results from the prospective European prediction of psychosis study. *Arch Gen Psychiatry.* 2010; 67: 241–251. <https://doi.org/10.1001/archgenpsychiatry.2009.206> PMID: 20194824
11. Fusar-Poli P, Borgwardt S, Bechdolf A, Addington J, Riecher-Rössler A, Schultze-Lutter F, et al. The psychosis high-risk state: a comprehensive state-of-the-art review. *JAMA Psychiatry.* 2013; 70: 107–120. <https://doi.org/10.1001/jamapsychiatry.2013.269> PMID: 23165428

12. Yung AR, Nelson B, Stanford C, Simmons MB, Cosgrave EM, Killackey E, et al. Validation of “prodromal” criteria to detect individuals at ultra high risk of psychosis: 2 year follow-up. *Schizophr Res*. 2008; 105: 10–17. <https://doi.org/10.1016/j.schres.2008.07.012> PMID: 18765167
13. Yung AR, McGorry PD. The initial prodrome in psychosis: descriptive and qualitative aspects. *Aust N Z J Psychiatry*. 1996; 30: 587–599. <https://doi.org/10.3109/00048679609062654> PMID: 8902166
14. Fusar-Poli P, Bechdolf A, Taylor MJ, Bonoldi I, Carpenter WT, Yung AR, et al. At risk for schizophrenic or affective psychoses? A meta-analysis of DSM/ICD diagnostic outcomes in individuals at high clinical risk. *Schizophr Bull*. 2013; 39: 923–932. <https://doi.org/10.1093/schbul/sbs060> PMID: 22589370
15. Fusar-Poli P, Bonoldi I, Yung AR, Borgwardt S, Kempton MJ, Valmaggia L, et al. Predicting psychosis: meta-analysis of transition outcomes in individuals at high clinical risk. *Arch Gen Psychiatry*. 2012; 69: 220–229. <https://doi.org/10.1001/archgenpsychiatry.2011.1472> PMID: 22393215
16. Lim J, Rekh G, Rapisarda A, Lam M, Kraus M, Keefe RSE, et al. Impact of psychiatric comorbidity in individuals at Ultra High Risk of psychosis—Findings from the Longitudinal Youth at Risk Study (LYRIKS). *Schizophr Res*. 2015; 164: 8–14. <https://doi.org/10.1016/j.schres.2015.03.007> PMID: 25818728
17. Fusar-Poli P, Yung AR, McGorry P, van Os J. Lessons learned from the psychosis high-risk state: towards a general staging model of prodromal intervention. *Psychol Med*. 2014; 44: 17–24. <https://doi.org/10.1017/S0033291713000184> PMID: 23414600
18. McGorry P, van Os J. Redeeming diagnosis in psychiatry: timing versus specificity. *Lancet*. 2013; 381: 343–345. [https://doi.org/10.1016/S0140-6736\(12\)61268-9](https://doi.org/10.1016/S0140-6736(12)61268-9) PMID: 23351805
19. van Os J, Guloksuz S. A critique of the “ultra-high risk” and “transition” paradigm. *World Psychiatry*. 2017; 16: 200–206. <https://doi.org/10.1002/wps.20423> PMID: 28498576
20. Hartmann JA, Nelson B, Ratheesh A, Treen D, McGorry PD. At-risk studies and clinical antecedents of psychosis, bipolar disorder and depression: a scoping review in the context of clinical staging. *Psychol Med*. 2019; 49: 177–189. <https://doi.org/10.1017/S0033291718001435> PMID: 29860956
21. Fusar-Poli P, Deste G, Smieskova R, Barlati S, Yung AR, Howes O, et al. Cognitive functioning in prodromal psychosis: a meta-analysis. *Arch Gen Psychiatry*. 2012; 69: 562–571. <https://doi.org/10.1001/archgenpsychiatry.2011.1592> PMID: 22664547
22. Lam M, Lee J, Rapisarda A, See YM, Yang Z, Lee S-A, et al. Longitudinal Cognitive Changes in Young Individuals at Ultrahigh Risk for Psychosis. *JAMA Psychiatry*. 2018; 75: 929–939. <https://doi.org/10.1001/jamapsychiatry.2018.1668> PMID: 30046827
23. Lee TY, Hong SB, Shin NY, Kwon JS. Social cognitive functioning in prodromal psychosis: A meta-analysis. *Schizophr Res*. 2015; 164: 28–34. <https://doi.org/10.1016/j.schres.2015.02.008> PMID: 25749019
24. Ho NF, Holt DJ, Cheung M, Iglesias JE, Goh A, Wang M, et al. Progressive Decline in Hippocampal CA1 Volume in Individuals at Ultra-High-Risk for Psychosis Who Do Not Remit: Findings from the Longitudinal Youth at Risk Study. *Neuropsychopharmacology*. 2017; 42: 1361–1370. <https://doi.org/10.1038/npp.2017.5> PMID: 28079061
25. Fusar-Poli P, McGuire P, Borgwardt S. Mapping prodromal psychosis: a critical review of neuroimaging studies. *Eur Psychiatry*. 2012; 27: 181–191. <https://doi.org/10.1016/j.eurpsy.2011.06.006> PMID: 21940151
26. Smieskova R, Fusar-Poli P, Allen P, Bendfeldt K, Stieglitz RD, Drewe J, et al. Neuroimaging predictors of transition to psychosis—a systematic review and meta-analysis. *Neurosci Biobehav Rev*. 2010; 34: 1207–1222. <https://doi.org/10.1016/j.neubiorev.2010.01.016> PMID: 20144653
27. Fusar-Poli P, Tantardini M, De Simone S, Ramella-Cravaro V, Oliver D, Kingdon J, et al. Deconstructing vulnerability for psychosis: Meta-analysis of environmental risk factors for psychosis in subjects at ultra high-risk. *Eur Psychiatry*. 2017; 40: 65–75. <https://doi.org/10.1016/j.eurpsy.2016.09.003> PMID: 27992836
28. Bousman CA, Yung AR, Pantelis C, Ellis JA, Chavez RA, Nelson B, et al. Effects of NRG1 and DAOA genetic variation on transition to psychosis in individuals at ultra-high risk for psychosis. *Transl Psychiatry*. 2013; 3: e251. <https://doi.org/10.1038/tp.2013.23> PMID: 23632455
29. Jagannath V, Theodoridou A, Gerstenberg M, Franscini M, Heekeren K, Correll CU, et al. Prediction Analysis for Transition to Schizophrenia in Individuals at Clinical High Risk for Psychosis: The Relationship of DAO, DAOA, and NRG1 Variants with Negative Symptoms and Cognitive Deficits. *Front Psychiatry*. 2017; 8: 292. <https://doi.org/10.3389/fpsy.2017.00292> PMID: 29326614
30. Kéri S, Kiss I, Kelemen O. Effects of a neuregulin 1 variant on conversion to schizophrenia and schizophreniform disorder in people at high risk for psychosis. *Mol Psychiatry*. 2009; 14: 118–119. <https://doi.org/10.1038/mp.2008.1> PMID: 19156152
31. Mössner R, Schuhmacher A, Wagner M, Quednow BB, Frommann I, Kühn K-U, et al. DAOA/G72 predicts the progression of prodromal syndromes to first episode psychosis. *Eur Arch Psychiatry Clin Neurosci*. 2010; 260: 209–215. <https://doi.org/10.1007/s00406-009-0044-y> PMID: 19763662

32. Chaumette B, Sengupta SM, Lepage M, Malla A, Iyer SN, Kebir O, et al. A polymorphism in the glutamate metabotropic receptor 7 is associated with cognitive deficits in the early phases of psychosis. *Schizophr Res*. 2020. <https://doi.org/10.1016/j.schres.2020.06.019> PMID: 32624350
33. Breen G, Li Q, Roth BL, O'Donnell P, Didriksen M, Dolmetsch R, et al. Translating genome-wide association findings into new therapeutics for psychiatry. *Nat Neurosci*. 2016; 19: 1392–1396. <https://doi.org/10.1038/nn.4411> PMID: 27786187
34. Sullivan PF, Agrawal A, Bulik CM, Andreassen OA, Børjglum AD, Breen G, et al. Psychiatric Genomics: An Update and an Agenda. *Am J Psychiatry*. 2018; 175: 15–27. <https://doi.org/10.1176/appi.ajp.2017.17030283> PMID: 28969442
35. Chatterjee N, Shi J, García-Closas M. Developing and evaluating polygenic risk prediction models for stratified disease prevention. *Nat Rev Genet*. 2016; 17: 392–406. <https://doi.org/10.1038/nrg.2016.27> PMID: 27140283
36. Choi SW, Mak TS-H, O'Reilly PF. Tutorial: a guide to performing polygenic risk score analyses. *Nat Protoc*. 2020; 15: 2759–2772. <https://doi.org/10.1038/s41596-020-0353-1> PMID: 32709988
37. International Schizophrenia Consortium, Purcell SM, Wray NR, Stone JL, Visscher PM, O'Donovan MC, et al. Common polygenic variation contributes to risk of schizophrenia and bipolar disorder. *Nature*. 2009; 460: 748–752. <https://doi.org/10.1038/nature08185> PMID: 19571811
38. Wray NR, Lee SH, Mehta D, Vinkhuyzen AAE, Dudbridge F, Middeldorp CM. Research review: Polygenic methods and their application to psychiatric traits. *J Child Psychol Psychiatry*. 2014; 55: 1068–1087. <https://doi.org/10.1111/jcpp.12295> PMID: 25132410
39. Lewis CM, Vassos E. Prospects for using risk scores in polygenic medicine. *Genome Med*. 2017; 9: 96. <https://doi.org/10.1186/s13073-017-0489-y> PMID: 29132412
40. Albert N, Melau M, Jensen H, Hastrup LH, Hjorthøj C, Nordentoft M. The effect of duration of untreated psychosis and treatment delay on the outcomes of prolonged early intervention in psychotic disorders. *NPJ Schizophr*. 2017; 3: 34. <https://doi.org/10.1038/s41537-017-0034-4> PMID: 28951544
41. Marshall M, Lewis S, Lockwood A, Drake R, Jones P, Croudace T. Association between duration of untreated psychosis and outcome in cohorts of first-episode patients: a systematic review. *Arch Gen Psychiatry*. 2005; 62: 975–983. <https://doi.org/10.1001/archpsyc.62.9.975> PMID: 16143729
42. Middeldorp CM, Wray NR. The value of polygenic analyses in psychiatry. *World Psychiatry*. 2018; 17: 26–28. <https://doi.org/10.1002/wps.20480> PMID: 29352547
43. Torkamani A, Wineinger NE, Topol EJ. The personal and clinical utility of polygenic risk scores. *Nat Rev Genet*. 2018; 19: 581–590. <https://doi.org/10.1038/s41576-018-0018-x> PMID: 29789686
44. Sugrue LP, Desikan RS. What Are Polygenic Scores and Why Are They Important? *JAMA*. 2019; 321: 1820–1821. <https://doi.org/10.1001/jama.2019.3893> PMID: 30958510
45. Murray GK, Lin T, Austin J, McGrath JJ, Hickie IB, Wray NR. Could Polygenic Risk Scores Be Useful in Psychiatry?: A Review. *JAMA Psychiatry*. 2020. <https://doi.org/10.1001/jamapsychiatry.2020.3042> PMID: 33052393
46. Calafato MS, Thygesen JH, Ramlund S, Zartaloudi E, Cahn W, Crespo-Facorro B, et al. Use of schizophrenia and bipolar disorder polygenic risk scores to identify psychotic disorders. *Br J Psychiatry*. 2018; 213: 535–541. <https://doi.org/10.1192/bjp.2018.89> PMID: 30113282
47. Vassos E, Di Forti M, Coleman J, Iyegbe C, Prata D, Euesden J, et al. An Examination of Polygenic Score Risk Prediction in Individuals With First-Episode Psychosis. *Biol Psychiatry*. 2017; 81: 470–477. <https://doi.org/10.1016/j.biopsych.2016.06.028> PMID: 27765268
48. Zheutlin AB, Dennis J, Karlsson Linnér R, Moscati A, Restrepo N, Straub P, et al. Penetrance and Pleiotropy of Polygenic Risk Scores for Schizophrenia in 106,160 Patients Across Four Health Care Systems. *Am J Psychiatry*. 2019; 176: 846–855. <https://doi.org/10.1176/appi.ajp.2019.18091085> PMID: 31416338
49. Jonas KG, Lencz T, Li K, Malhotra AK, Perlman G, Fochtmann LJ, et al. Schizophrenia polygenic risk score and 20-year course of illness in psychotic disorders. *Transl Psychiatry*. 2019; 9: 300. <https://doi.org/10.1038/s41398-019-0612-5> PMID: 31727878
50. Guloksuz S, Pries L-K, Ten Have M, de Graaf R, van Dorsselaer S, Klingenberg B, et al. Association of preceding psychosis risk states and non-psychotic mental disorders with incidence of clinical psychosis in the general population: a prospective study in the NEMESIS-2 cohort. *World Psychiatry*. 2020; 19: 199–205. <https://doi.org/10.1002/wps.20755> PMID: 32394548
51. Perkins DO, Olde Loohuis L, Barbee J, Ford J, Jeffries CD, Addington J, et al. Polygenic Risk Score Contribution to Psychosis Prediction in a Target Population of Persons at Clinical High Risk. *Am J Psychiatry*. 2020; 177: 155–163. <https://doi.org/10.1176/appi.ajp.2019.18060721> PMID: 31711302
52. He Q, Kebir O, Houle G, Dion PA, Rouleau GA, Krebs M, et al. No individual prediction of clinical outcome of ultra-high-risk individuals by the polygenic risk scores. *Eur J Hum Genet*. 2019; 27: 1456–1457.

53. Lam M, Chen C-Y, Li Z, Martin AR, Bryois J, Ma X, et al. Comparative genetic architectures of schizophrenia in East Asian and European populations. *Nat Genet.* 2019; 51: 1670–1678. <https://doi.org/10.1038/s41588-019-0512-x> PMID: 31740837
54. Duncan L, Shen H, Gelaye B, Meijssen J, Ressler K, Feldman M, et al. Analysis of polygenic risk score usage and performance in diverse human populations. *Nat Commun.* 2019; 10: 3328. <https://doi.org/10.1038/s41467-019-11112-0> PMID: 31346163
55. Martin AR, Kanai M, Kamatani Y, Okada Y, Neale BM, Daly MJ. Clinical use of current polygenic risk scores may exacerbate health disparities. *Nat Genet.* 2019; 51: 584–591. <https://doi.org/10.1038/s41588-019-0379-x> PMID: 30926966
56. Lam M, Abdul Rashid NA, Lee S-A, Lim J, Foussias G, Fervaha G, et al. Baseline social amotivation predicts 1-year functioning in UHR subjects: A validation and prospective investigation. *Eur Neuropsychopharmacol.* 2015; 25: 2187–2196. <https://doi.org/10.1016/j.euroneuro.2015.10.007> PMID: 26553972
57. Yang Z, Lim K, Lam M, Keefe R, Lee J. Factor structure of the positive and negative syndrome scale (PANSS) in people at ultra high risk (UHR) for psychosis. *Schizophr Res.* 2018; 201: 85–90. <https://doi.org/10.1016/j.schres.2018.05.024> PMID: 29804925
58. Mitter N, Nah GQR, Bong YL, Lee J, Chong S-A. Longitudinal Youth-At-Risk Study (LYRIKS): outreach strategies based on a community-engaged framework. *Early Interv Psychiatry.* 2014; 8: 298–303. <https://doi.org/10.1111/eip.12049> PMID: 23682863
59. Yung AR, Yuen HP, McGorry PD, Phillips LJ, Kelly D, Dell'Olio M, et al. Mapping the onset of psychosis: the Comprehensive Assessment of At-Risk Mental States. *Aust N Z J Psychiatry.* 2005; 39: 964–971. <https://doi.org/10.1080/j.1440-1614.2005.01714.x> PMID: 16343296
60. First MB, Spitzer RL, Gibbon M, Williams JBW. Structured clinical interview for DSM-IV-TR axis I disorders, research version, patient edition. SCID-I/P. New York: Biometrics Research, New York State Psychiatric Institute; 2002.
61. Chang CC, Chow CC, Tellier LC, Vattikuti S, Purcell SM, Lee JJ. Second-generation PLINK: rising to the challenge of larger and richer datasets. *Gigascience.* 2015; 4: 7. <https://doi.org/10.1186/s13742-015-0047-8> PMID: 25722852
62. Teo Y-Y, Sim X, Ong RTH, Tan AKS, Chen J, Tantoso E, et al. Singapore Genome Variation Project: a haplotype map of three Southeast Asian populations. *Genome Res.* 2009; 19: 2154–2162. <https://doi.org/10.1101/gr.095000.109> PMID: 19700652
63. 1000 Genomes Project Consortium, Auton A, Brooks LD, Durbin RM, Garrison EP, Kang HM, et al. A global reference for human genetic variation. *Nature.* 2015; 526: 68–74. <https://doi.org/10.1038/nature15393> PMID: 26432245
64. Das S, Forer L, Schönerr S, Sidore C, Locke AE, Kwong A, et al. Next-generation genotype imputation service and methods. *Nat Genet.* 2016; 48: 1284–1287. <https://doi.org/10.1038/ng.3656> PMID: 27571263
65. 1000 Genomes Project Consortium, Abecasis GR, Auton A, Brooks LD, DePristo MA, Durbin RM, et al. An integrated map of genetic variation from 1,092 human genomes. *Nature.* 2012; 491: 56–65. <https://doi.org/10.1038/nature11632> PMID: 23128226
66. Pardiñas AF, Holmans P, Pocklington AJ, Escott-Price V, Ripke S, Carrera N, et al. Common schizophrenia alleles are enriched in mutation-intolerant genes and in regions under strong background selection. *Nat Genet.* 2018; 50: 381–389. <https://doi.org/10.1038/s41588-018-0059-2> PMID: 29483656
67. Major Depressive Disorder Working Group of the Psychiatric GWAS Consortium, Ripke S, Wray NR, Lewis CM, Hamilton SP, Weissman MM, et al. A mega-analysis of genome-wide association studies for major depressive disorder. *Mol Psychiatry.* 2013; 18: 497–511. <https://doi.org/10.1038/mp.2012.21> PMID: 22472876
68. CONVERGE consortium. Sparse whole-genome sequencing identifies two loci for major depressive disorder. *Nature.* 2015; 523: 588–591. <https://doi.org/10.1038/nature14659> PMID: 26176920
69. Howard DM, Adams MJ, Clarke T-K, Hafferty JD, Gibson J, Shirali M, et al. Genome-wide meta-analysis of depression identifies 102 independent variants and highlights the importance of the prefrontal brain regions. *Nat Neurosci.* 2019; 22: 343–352. <https://doi.org/10.1038/s41593-018-0326-7> PMID: 30718901
70. Stahl EA, Breen G, Forstner AJ, McQuillin A, Ripke S, Trubetskov V, et al. Genome-wide association study identifies 30 loci associated with bipolar disorder. *Nat Genet.* 2019; 51: 793–803. <https://doi.org/10.1038/s41588-019-0397-8> PMID: 31043756
71. Otowa T, Hek K, Lee M, Byrne EM, Mirza SS, Nivard MG, et al. Meta-analysis of genome-wide association studies of anxiety disorders. *Mol Psychiatry.* 2016; 21: 1391–1399. <https://doi.org/10.1038/mp.2015.197> PMID: 26754954

72. International Obsessive Compulsive Disorder Foundation Genetics Collaborative (IOCDF-GC) and OCD Collaborative Genetics Association Studies (OCGAS). Revealing the complex genetic architecture of obsessive-compulsive disorder using meta-analysis. *Mol Psychiatry*. 2018; 23: 1181–1188. <https://doi.org/10.1038/mp.2017.154> PMID: 28761083
73. Watson HJ, Yilmaz Z, Thornton LM, Hübel C, Coleman JRI, Gaspar HA, et al. Genome-wide association study identifies eight risk loci and implicates metabo-psychiatric origins for anorexia nervosa. *Nat Genet*. 2019; 51: 1207–1214. <https://doi.org/10.1038/s41588-019-0439-2> PMID: 31308545
74. Grove J, Ripke S, Als TD, Mattheisen M, Walters RK, Won H, et al. Identification of common genetic risk variants for autism spectrum disorder. *Nat Genet*. 2019; 51: 431–444. <https://doi.org/10.1038/s41588-019-0344-8> PMID: 30804558
75. Demontis D, Walters RK, Martin J, Mattheisen M, Als TD, Agerbo E, et al. Discovery of the first genome-wide significant risk loci for attention deficit/hyperactivity disorder. *Nat Genet*. 2019; 51: 63–75. <https://doi.org/10.1038/s41588-018-0269-7> PMID: 30478444
76. Cross-Disorder Group of the Psychiatric Genomics Consortium. Genomic relationships, novel loci, and pleiotropic mechanisms across eight psychiatric disorders. *Cell*. 2019; 179: 1469–1482. <https://doi.org/10.1016/j.cell.2019.11.020> PMID: 31835028
77. Euesden J, Lewis CM, O'Reilly PF. PRSice: Polygenic Risk Score software. *Bioinformatics*. 2015; 31: 1466–1468. <https://doi.org/10.1093/bioinformatics/btu848> PMID: 25550326
78. Choi SW, O'Reilly PF. PRSice-2: Polygenic Risk Score software for biobank-scale data. *Gigascience*. 2019; 8. <https://doi.org/10.1093/gigascience/giz082> PMID: 31307061
79. Dudbridge F. Power and predictive accuracy of polygenic risk scores. *PLoS Genet*. 2013; 9: e1003348. <https://doi.org/10.1371/journal.pgen.1003348> PMID: 23555274
80. Palla L, Dudbridge F. A Fast Method that Uses Polygenic Scores to Estimate the Variance Explained by Genome-wide Marker Panels and the Proportion of Variants Affecting a Trait. *Am J Hum Genet*. 2015; 97: 250–259. <https://doi.org/10.1016/j.ajhg.2015.06.005> PMID: 26189816
81. Charlson FJ, Ferrari AJ, Santomauro DF, Diminic S, Stockings E, Scott JG, et al. Global Epidemiology and Burden of Schizophrenia: Findings From the Global Burden of Disease Study 2016. *Schizophr Bull*. 2018; 44: 1195–1203. <https://doi.org/10.1093/schbul/sby058> PMID: 29762765
82. Saha S, Chant D, Welham J, McGrath J. A systematic review of the prevalence of schizophrenia. *PLoS Med*. 2005; 2: e141. <https://doi.org/10.1371/journal.pmed.0020141> PMID: 15916472
83. IBM Corp. IBM SPSS Statistics for Windows, Version 23.0. Armonk, NY: IBM Corp. 2015.
84. R Core Team. A language and environment for statistical computing. R Foundation for Statistical Computing, Vienna, Austria. 2017.
85. Wickham H. ggplot2: Elegant Graphics for Data Analysis. Springer; 2016.
86. Allen M, Poggiali D, Whitaker K, Marshall TR, Kievit R. Raincloud plots: a multi-platform tool for robust data visualization. *Wellcome Open Res*. 2018; 63.
87. Cai N, Revez JA, Adams MJ, Andlauer TFM, Breen G, Byrne EM, et al. Minimal phenotyping yields genome-wide association signals of low specificity for major depression. *Nat Genet*. 2020; 52: 437–447. <https://doi.org/10.1038/s41588-020-0594-5> PMID: 32231276
88. Cai N, Choi KW, Fried EI. Reviewing the genetics of heterogeneity in depression: Operationalizations, manifestations, and etiologies. *Hum Mol Genet*. 2020; 29: R10–R18. <https://doi.org/10.1093/hmg/ddaa115> PMID: 32568380
89. Halldorsdottir T, Binder EB. Gene × Environment Interactions: From Molecular Mechanisms to Behavior. *Annu Rev Psychol*. 2017; 68: 215–241. <https://doi.org/10.1146/annurev-psych-010416-044053> PMID: 27732803
90. Smeets F, Lataster T, Viechtbauer W, Delespaul P, G.R.O.U.P. Evidence that environmental and genetic risks for psychotic disorder may operate by impacting on connections between core symptoms of perceptual alteration and delusional ideation. *Schizophr Bull*. 2015; 41: 687–697. <https://doi.org/10.1093/schbul/sbu122> PMID: 25217481
91. Kebir O, Chaumette B, Krebs M-O. Epigenetic variability in conversion to psychosis: novel findings from an innovative longitudinal methylomic analysis. *Transl Psychiatry*. 2018; 8: 93. <https://doi.org/10.1038/s41398-018-0138-2> PMID: 29695761
92. Kebir O, Chaumette B, Rivollier F, Miozzo F, Lemieux Perreault LP, Barhaddi A, et al. Methylomic changes during conversion to psychosis. *Mol Psychiatry*. 2017; 22: 512–518. <https://doi.org/10.1038/mp.2016.53> PMID: 27113994
93. Goh WWB, Sng JC-G, Yee JY, See YM, Lee T-S, Wong L, et al. Can Peripheral Blood-Derived Gene Expressions Characterize Individuals at Ultra-high Risk for Psychosis? *Comput Psychiatr*. 2017; 1: 168–183. [https://doi.org/10.1162/CPSY\\_a\\_00007](https://doi.org/10.1162/CPSY_a_00007) PMID: 30090857



94. Chaumette B, Kebir O, Pouch J, Ducos B, Selimi F, ICAAR study group, et al. Longitudinal Analyses of Blood Transcriptome During Conversion to Psychosis. *Schizophr Bull.* 2019; 45: 247–255. <https://doi.org/10.1093/schbul/sby009> PMID: 29471546
95. Khera AV, Chaffin M, Aragam KG, Haas ME, Roselli C, Choi SH, et al. Genome-wide polygenic scores for common diseases identify individuals with risk equivalent to monogenic mutations. *Nat Genet.* 2018; 50: 1219–1224. <https://doi.org/10.1038/s41588-018-0183-z> PMID: 30104762
96. Iyegbe C, Campbell D, Butler A, Ajnakina O, Sham P. The emerging molecular architecture of schizophrenia, polygenic risk scores and the clinical implications for GxE research. *Soc Psychiatry Psychiatr Epidemiol.* 2014; 49: 169–182. <https://doi.org/10.1007/s00127-014-0823-2> PMID: 24435092