

RESEARCH ARTICLE

Isolation, culturing and gene expression profiling of inner mass cells from stable and vulnerable carotid atherosclerotic plaques

Olga A. Novikova¹, Zhanna K. Nazarkina², Anna V. Cherepanova^{1,2*}, Petr P. Laktionov^{3,4}, Boris P. Chelobanov^{2,4}, Ivan S. Murashov¹, Roman V. Deev⁵, Evgeny A. Pokushalov^{1,2}, Andrey A. Karpenko¹, Pavel P. Laktionov^{1,2}

1 "E. Meshalkin National Medical Research Center", Ministry of Health of the Russian Federation, Novosibirsk, Russia, **2** Laboratory of Molecular Medicine, SB RAS Institute of Chemical Biology and Fundamental Medicine, Novosibirsk, Russia, **3** Laboratory of Genomics, SB RAS Institute of Molecular and Cellular Biology, Novosibirsk, Russia, **4** Novosibirsk State University, Novosibirsk, Russia, **5** Ryazan State Medical University, Ryazan, Russia

* a_cher@niboch.nsc.ru



OPEN ACCESS

Citation: Novikova OA, Nazarkina ZK, Cherepanova AV, Laktionov PP, Chelobanov BP, Murashov IS, et al. (2019) Isolation, culturing and gene expression profiling of inner mass cells from stable and vulnerable carotid atherosclerotic plaques. PLoS ONE 14(6): e0218892. <https://doi.org/10.1371/journal.pone.0218892>

Editor: Christoph E. Hagemeyer, Monash University, AUSTRALIA

Received: February 19, 2019

Accepted: June 11, 2019

Published: June 26, 2019

Copyright: © 2019 Novikova et al. This is an open access article distributed under the terms of the [Creative Commons Attribution License](https://creativecommons.org/licenses/by/4.0/), which permits unrestricted use, distribution, and reproduction in any medium, provided the original author and source are credited.

Data Availability Statement: RNA-seq data were deposited into NCBI's Gene Expression Omnibus (GSE116243).

Funding: This work was supported by the Russian Science Foundation (<http://rscf.ru/en/>) grant number 18-15-00080 to PPL and partially by Russian State funded budget project of ICBFM SB RAS # AAAA-A17-117020210026-2 to EAP. The funders had no role in study design, data collection

Abstract

The connective tissue components that form the atherosclerotic plaque body are produced by the plaque inner mass cells (PIMC), located inside the plaque. We report an approach to isolate and culture cells from the connective tissue of stable and vulnerable human atherosclerotic plaques based on elimination of non-connective tissue cells such as blood and non-plaque intima cells with a lysis buffer. The resulting plaque cells were characterized by growth capacity, morphology, transcriptome profiling and specific protein expression. Plaque cells slowly proliferated for up to three passages unaffected by the use of proliferation stimulants or changes of culture media composition. Stable plaques yielded more cells than vulnerable ones. Plaque cell cultures also contained several morphological cellular types. RNA-seq profiles of plaque cells were different from any of the cell types known to be involved in atherogenesis. The expression of the following proteins was observed in cultured plaque cells: smooth muscle cells marker α -SMA, macrophage marker CD14, extracellular matrix proteins aggrecan, fibronectin, neovascularisation markers VEGF-A, CD105, cellular adhesion receptor CD31 and progenitor/dedifferentiation receptor CD34. Differential expression of several notable transcripts in cells from stable and vulnerable plaques suggests the value of plaque cell culture studies for the search of plaque vulnerability markers.

Introduction

Atherosclerosis is a chronic complex disease of the arterial wall involving several pathological processes which can vary between patients [1]. Several cell types are involved in atherogenesis: endothelial cells, vascular smooth muscle cells (VSMC), monocyte-derived macrophages and other inflammatory cells, including T cells, B cells, and dendritic cells [2].

An atherosclerotic plaque is strongly influenced by the surrounding and circulating cells (through direct contacts as well as cytokines and growth factors) [3] and mechanical forces [4].

and analysis, decision to publish, or preparation of the manuscript.

Competing interests: The authors have declared that no competing interests exist.

However, the formation of plaque stroma, neovascularisation and thrombogenesis [5], calcification [6] and other key structural processes are presumably driven by the plaque inner mass cells (PIMC) comprised mainly of connective tissue cells entombed in the plaque, including cells specific to atherosclerotic plaque compartments such as areas of calcification.

These cells are responsible for extracellular matrix proteins (ECM) production, fibrous cap formation, hydroxyapatite deposition and respond to the signals from surrounding cells, thus being the key actors of atherogenesis and determining plaque phenotype (stable plaque (s-plaque) with thick fibrous cap versus prone to rupture vulnerable plaque (v-plaque) with thinning fibrous cap and heightened inflammatory state) [1].

A study of human PIMC cultures may expand our knowledge about the growth and development of atheromas and contribute to the *in vitro* study of the plaque vulnerability and the search for the new markers of v-plaques. The quantity of PIMC in a plaque is relatively low due to the slow growth and the dense structure of atherosclerotic plaques [7]. Several groups have previously cultured plaque cells after isolation from minced plaque tissue using long-term enzymatic digestion [8–10]. According to these reports, plaque cells in culture resemble smooth muscle cells, although cellular composition of cell cultures derived from plaques may be more heterogeneous. Additionally, plaque surface irregularity and elevated expression of chemokines and adhesion molecules may promote extensive blood cells adhesion [11]. Some of these cells may be retained in plaque cell cultures where they proliferate and/or secrete interleukins or growth factors thus affecting the growth of PIMC [12]. Residual non-plaque intimal cells usually remaining on atheromas after the carotid endarterectomy (CEA) may also proliferate and eventually overgrow PIMC. Different properties of these cells and variations in plaque treatment protocols can significantly affect the composition, phenotype and characteristics of cells in plaque cell cultures.

In this study we have developed a protocol for PIMC isolation which includes an additional step of plaque treatment with lysis buffer to remove non-plaque cells. We have cultured cells from stable and vulnerable plaques (s-PIMC and v-PIMC) up to three passages and characterized their RNA expression profile and the expression of several ECM proteins and markers of atherosclerosis. PIMC cultures may prove to be useful *in vitro* model of cellular interactions in atherosclerotic plaques.

Materials and methods

Patients and specimen

The study included a total of 91 patients (Table 1) undergoing CEA for occlusive artery disease. Of these, 24 patients were symptomatic and had an ischaemic event (transient ischemic attack/stroke/amaurosis fugax) within the 6-month period prior to CEA. The investigation was approved by the Local Ethical Committee of the E. Meshalkin National medical investigation center (№42, 17.10.2014). Written informed consent was obtained from all participants according to the Declaration of Helsinki.

Atherosclerotic plaques were isolated by CEA under general anaesthesia with transcranial Doppler (TCD) monitoring, online electroencephalogram (EEG) registration and systemic heparinization. The plaques were washed with sterile 0.9% NaCl, placed in IMDM (Invitrogen, Carlsbad, CA, USA) and immediately transported to the laboratory for processing. Based on the histological evaluation and the stage of atherosclerosis plaque stability/vulnerability status was determined for each preparation according to a modified, well-defined, well-validated American Heart Association (AHA) atherosclerotic scoring system [13,14]. The main criteria for vulnerable plaque definition were a fibrous cap thickness < 65 μm , high macrophage infiltration (> 25 cells per 0.3 mm diameter field), fibrous cap rupture and/or erosion, intraplaque

Table 1. Patient characteristics and plaque vulnerability.

Variable	Plaque vulnerability		p value
	Stable (n = 35) N(%)	Vulnerable (n = 56)N(%)	
Age, years	67 [63; 69]	65.5 [60; 70.5]	0.91
Male sex, % (n)	20 (57.1%)	46 (82.1%)	0.015
Body mass index, kg/m ²	27.2 [23.9; 31]	29.3 [26; 32.25]	0.052
Current smoker, % (n)	12 (34.3%)	13 (23.2%)	0.33
Diabetes, % (n)	8 (22.9%)	19 (33.9%)	0.35
Hypertension, % (n)	30 (85.7%)	54 (96.4%)	0.1
Degree of stenosis, %	70 [70; 80]	80 [70; 87.5]	0.052
Symptoms, % (n)	9 (25.7%)	15 (26.8%)	1

Numbers given as counts (percentage) or median [interquartile range]. Between groups comparisons were made with the help of the Mann-Whitney U test (quantitative), or with the help of accurate two-sided F-test (qualitative). P values < 0.05 were considered significant.

<https://doi.org/10.1371/journal.pone.0218892.t001>

hemorrhages and/or thrombosis [15]. Histological samples were independently analyzed by two histopathologists (I.M. and R.D.) who were blinded to patient's data. All ambiguously classified plaques were excluded from the study.

Plaque inner mass cells purification and cell culture

Plaque tissue samples with average size $12 \pm 1 \times 4 \pm 1 \times 6 \pm 1$ mm and weight 300–500 mg were treated two times with at least 2 volumes (volume : weight) of lysis buffer (0.5% NP-40, 2 mM EDTA, 0.01 M Tris-HCl, pH = 7.5) for 10 minutes at the room temperature. Then tissue samples were washed 5 times with PBS, minced finely into small pieces (1 mm³) with subsequent incubation in 0.2% collagenase II (Invitrogen, Carlsbad, CA, USA) in Hanks' solution (H6648, Sigma Chemical Co., St. Louis, MO, USA) for 16 h at 37°C, 5% CO₂. Hydrolyzed plaque fragments were centrifuged 10 min at 400 g, resuspended in 6 ml of IMDM, 10% FBS, 100 µg/ml penicillin and streptomycin (Invitrogen, Carlsbad, CA, USA) (IMDM-FBS), placed in the 10 mm tissue culture dishes and cultivated at 37°C, 5% CO₂. After 3 days adherent PIMC were washed 3 times with IMDM to remove tissue fragments, fresh IMDM-FBS was added and cells were cultivated at 37°C, 5% CO₂ with a medium change every 5 days for 20–25 days until about 80% confluence. Cells were subcultured with the solution of 0.2% collagenase II in IMDM.

The morphology of cells was documented on Axiovert 40 C microscope with AxioCamICc 3 camera using AxioVisionSE 64 Rel.4.9.1 software (CarlZeiss, Munich, Germany).

To investigate the proliferation and/or differentiation PIMC potential several culture media were used: DMEMF12, 15% FBS, 10 nM dexamethazone, 50 µg/mL ascorbic acid, 0.2 µg/mL L-glutamine, 6.25 ng/mL Insulin-Transferrin-Sodium Selenite (DMEM F12-chondro) [16], DMEMF12, 15% FBS, 100 nM dexamethazone, 50 µg/mL ascorbic acid, 0.2 µg/mL L-glutamine, 10 mM β-glycerophosphate (DMEMF12-osteo) [16] and Medium 231 with smooth muscle growth supplement (Invitrogen, Carlsbad, CA, USA) (Medium231s), which are used as chondrogenic, osteogenic and smooth muscle cell (SMC) growth/differentiation media, correspondingly.

Effects of proliferation-inducing agents were investigated by the addition of the following reagents to PIMC in IMDM-FBS: 10 ng/mL phorbol 12-myristate 13-acetate (PMA), 2 ng/mL insulin-like growth factor (IGF), 50 ng/mL epidermal growth factor (EGF) (Sigma-Aldrich, Saint Louis, MO, USA) or FBS to a 20% content.

Cell viability was quantitatively estimated 1 and 5 days after PIMC seeding in various media or with proliferation-inducing agents in a 48-well plate (10^4 cells per well) using alamarBlue reagent (Invitrogen, Carlsbad, CA, USA).

Isolation and cell culture of human umbilical vein endothelial cells (HUVEC), vascular smooth muscle cells (VSMC) and hyaline cartilage chondrocytes (HCC)

HUVEC were isolated from umbilical cord vein and cultured in IMDM-FBS up to 4 passages as previously described [17].

VSMC were isolated from a fragment of internal carotid artery, removed while surgical treatment/correction of the kinked internal carotid arteries. HCC were isolated from the hyaline cartilage of femoral head removed during total hip replacement. The tissue fragments were washed with PBS, minced finely, incubated in collagenase II, put in Petri dishes and washed after three days as described above for PIMC. VSMC and HCC were cultured in IMDM-FBS and DMEM F12-chondro, respectively, and subcultured with collagenase II.

MiRNA isolation and RT-TaqMan PCR

MiRNA were isolated by phenol-based extraction (Trizol, Invitrogen, Carlsbad, CA, USA) from treated and untreated with lysis buffer plaque tissue samples homogenized in liquid nitrogen according to the manufacturer's protocol. RNA samples were treated with RNase-free DNase I (Fermentas, Vilnius, Lithuania) and precipitated in 70% ethanol, 0.3 M NaAc.

Primers and probes for reverse transcription and TaqMan PCR (sequences are provided in [S1 Table](#)) were synthesized in the Laboratory of medical chemistry (ICHBFM SB RAS, Novosibirsk, Russia). Synthesis of cDNA was carried out in 20 μ L by reverse transcription of 100 ng RNA using 0.05 mM RT-primer and 50 U M-MuLV reverse transcriptase (BiolabMix, Novosibirsk, Russia) according to the manufacturer's protocol. Quantitative real-time PCRs were performed in duplicate in 24 μ L and contained 2.5 μ L cDNA, 0.5 μ M forward primer, 0.4 μ M universal reverse primer, 0.3 μ M TaqMan probe, buffer BioMaster (BiolabMix, Novosibirsk, Russia). The following thermocycling condition was used for miRNA 23a and miRNA 451a: 95°C for 5 min and 40 cycles of 95°C for 15s / 60°C for 45 s.

RNA extraction from PIMC

Total RNA was isolated from the first passage s- and v-PIMC with Trizol reagent. RNA samples were treated with RNase-free DNase I and precipitated in 70% ethanol, 0.3 M sodium acetate, 20 μ g glycogen. The concentration and RNA integrity number (RIN) were determined using NanoDrop 2000 (Thermo Fisher Scientific, Wilmington, DE, USA) and Agilent RNA 6000 Pico Kit on Agilent 2100 Bioanalyzer (Agilent Technologies, Santa Clara, CA, USA).

mRNA sequencing and data analysis

RNA-Seq was performed in the Turku Centre for Biotechnology Finnish Microarray and Sequencing Centre (<http://www.btk.fi>). Two RNA samples from s-PIMC and two samples from v-PIMC were prepared for the sequencing using Illumina TruSeq Stranded mRNA Sample Preparation Kit and sequenced with the HiSeq 2500 instrument (Illumina, San Diego, CA, USA) using single-end sequencing chemistry and 50bp read length. RNA-Seq reads were quality-filtered using FASTQ Quality Filter (-q 20 -p 75) from FASTX-toolkit (http://hannonlab.cshl.edu/fastx_toolkit/). Ribosomal RNA reads were filtered out using SortMeRNA tool [18]. RNA-seq reads were aligned on GRCh38 (Ensembl release 91) using HISAT2 aligner (—score-

min L,0,-0.5) [19]. FeatureCounts tool from the Subread package was used to count reads to genomic features [20]. Differential expression analysis and PCA visualization were performed with DESeq2 [21]. Heatmaps were generated using R. RNA-seq data were deposited into NCBI's Gene Expression Omnibus (GSE116243).

For comparative analysis using PCA and heatmaps the following publicly available RNA-Seq datasets were used: [GSE51878](#) from human coronary artery smooth muscle cell (HCASMC) [22], GSE85784 from HAEC and HUVEC [23], GSE79044 from monocyte-derived macrophages (MCRPH) [24], ENCSR000CUE, ENCSR000CUF and ENCSR000CUJ (ENCODE Consortium repository) from human articular chondrocytes of knee joint (AChKJ), human osteoblasts (HOB) and human fibroblasts from aortic adventitia (FAADV), correspondingly.

Immunofluorescence

PIMC (10^4 cells per well) were seeded in 8-well Nunc Lab-Tek Chamber Slides (Invitrogen, Carlsbad, CA, USA). After reaching the 50% confluence cells were washed with IMDM, fixed with 3.7% paraformaldehyde in IMDM, and 0.2% Nonidet P-40 was used to permeabilize the cells. Slides were incubated for 2 hours at 37°C with primary antibodies against α -SMA (ab7817), aggrecan (ab36861), fibronectin (ab45688), CD34 (ab81289), VEGF-A (ab1316) (Abcam, Cambridge, UK), CD105 (M352701-2), CD31 (PECAM1) (M082301-2) (Dako, Agilent, Santa Clara, CA, USA), CD14 (2109035) (Sony Biotechnology Inc., San Jose, CA, USA), then incubated for 1 hour at 37°C with Alexa 488-conjugated secondary antibodies (ab150077 and ab1500117, Abcam, Cambridge, UK). Samples were stained with rhodamine phalloidin (Sigma-Aldrich, Saint Louis, MO, USA) for F-actin, and glass slides were covered with the Prolong Gold antifade reagent with DAPI (Invitrogen, Carlsbad, CA, USA) for nuclei staining, mounted with coverslips and analyzed using confocal laser scanning microscopes LSM 510 UV Meta or LSM 780 NLO (Carl Zeiss, Jena, Germany) using three laser lines at 405 nm (to detect cell nuclei stained with DAPI), 543 nm (to detect actin microfilaments stained with phalloidin-TRITC), and 488 nm (to detect Alexa Fluor 488 secondary antibodies).

Statistical analysis

Data are presented as mean \pm SD or median with range. Where appropriate data were normalized using \log_2 and statistical comparisons were made using T-tests. Where normality could not be confirmed, data were analysed using a Mann-Whitney test. P values < 0.05 was considered statistically significant. Benjamini-Hochberg FDR adjustment was applied to correct for multiple comparisons in DEG identification.

Results

The removal of cells from the surface of plaques

To eliminate cells located on the atherosclerotic plaque surface or close, we suggest a short-term plaque treatment with lysis buffer containing NP-40 detergent. NP-40 concentrations above 0.5% provide efficient lysis of cells and can guarantee the elimination of plaque surface cells. At the same time, due to detergent micellization, dense plaque structure and short treatment time the detergent should not be able to infiltrate deep into the plaque body, ensuring the preservation of PIMC.

The removal of cells from the plaque surface was assessed using quantitative TaqMan PCR for miR-451a and miR-23a. While miR-451a is highly expressed in blood cells, whereas miR-23a is expressed at a low level in various cell types [25]. Our data showed that a large portion of

surface plaque cells is comprised of red blood cells, and some of the plaques appear visibly “bloody” after surgical removal (S2 Table). The decrease of $\Delta Ct = Ct(miR-23a) - Ct(miR-451a)$ after lysis buffer treatment indicates the decrease in the number of blood cells in the sample. Ten plaques (6 vulnerable and 4 stable) were divided into two parts, miRNA levels were measured with and without lysis buffer treatment and the decrease of ΔCt was observed in all samples treated with lysis buffer as compared to controls (Table 2, $P = 0.0047$).

The raw Ct data (S2 Table) demonstrate that the miR-23a level did not change significantly after lysis buffer treatment ($P = 0.4417$) and the ΔCt decrease was caused by the increase of miR-451a Ct ($P = 0.0029$) after lysis buffer treatment. Using miRNA expression as an indicator in preliminary experiments, we optimized the detergent concentration in lysis buffer and treatment time to achieve the maximum decrease in ΔCt .

It should be noted, that PIMC may also express both miRNAs, and therefore the decrease of ΔCt is a helpful indicator but should be confirmed by other means. To visually assess the presence of cells on plaque surface we have compared histological specimens obtained from the same plaque before and after lysis buffer treatment (Fig 1). Both for stable and vulnerable atheromas, lysis buffer successfully removed plaque surface cells (including endothelial cells), without any noticeable damage to PIMC. Based on the observations provided by both methods all plaques studied further were treated with lysis buffer and thoroughly washed with PBS prior to PIMC isolation.

PIMC purification and cell culture

In the preliminary experiments lysis buffer-treated, washed and finely minced plaques were incubated with proteases (dispase, collagenases type I, type II and type IV), commonly used for isolation of cells from various tissues [7,26]. According to our results most of the enzymes as well as short (2–4 hours) enzymatic treatment of minced plaque tissue did not result in noticeable PIMC release. We have therefore developed the protocol for PIMC isolation based on our previous successful experience with the isolation of chondrocytes from human cartilage—a tissue of comparable density. As such, we used long-term collagenase II treatment, which is common for chondrocyte isolation from cartilage [27]. We have observed that long-term overnight treatment of minced plaques with 0.2% collagenase II has efficiently

Table 2. The relative expression of miR-451a and miR-23a ($\Delta Ct = Ct(miR-23a) - Ct(miR-451)$) in v-plaque samples (v) and s-plaque samples (s).

Plaque	ΔCt (control)	ΔCt (lysis buffer)
v1	2.2	1.6
v2	6.7	3.1
v3	7.1	4.2
v4	5.3	3.8
v5	8.2	4.9
v6	4.4	3.2
s1	2.8	2.3
s2	4.8	4.7
s3	4.4	3.0
s4	1.6	1.4

MicroRNA level was measured after the isolation from untreated (control) and treated with lysis buffer (lysis buffer) plaque fragments. The ΔCt decrease (Paired samples two-tailed t-test $P = 0.0047$) was observed after the treatment in all plaque samples indicating a reduction in blood cell quantity.

<https://doi.org/10.1371/journal.pone.0218892.t002>

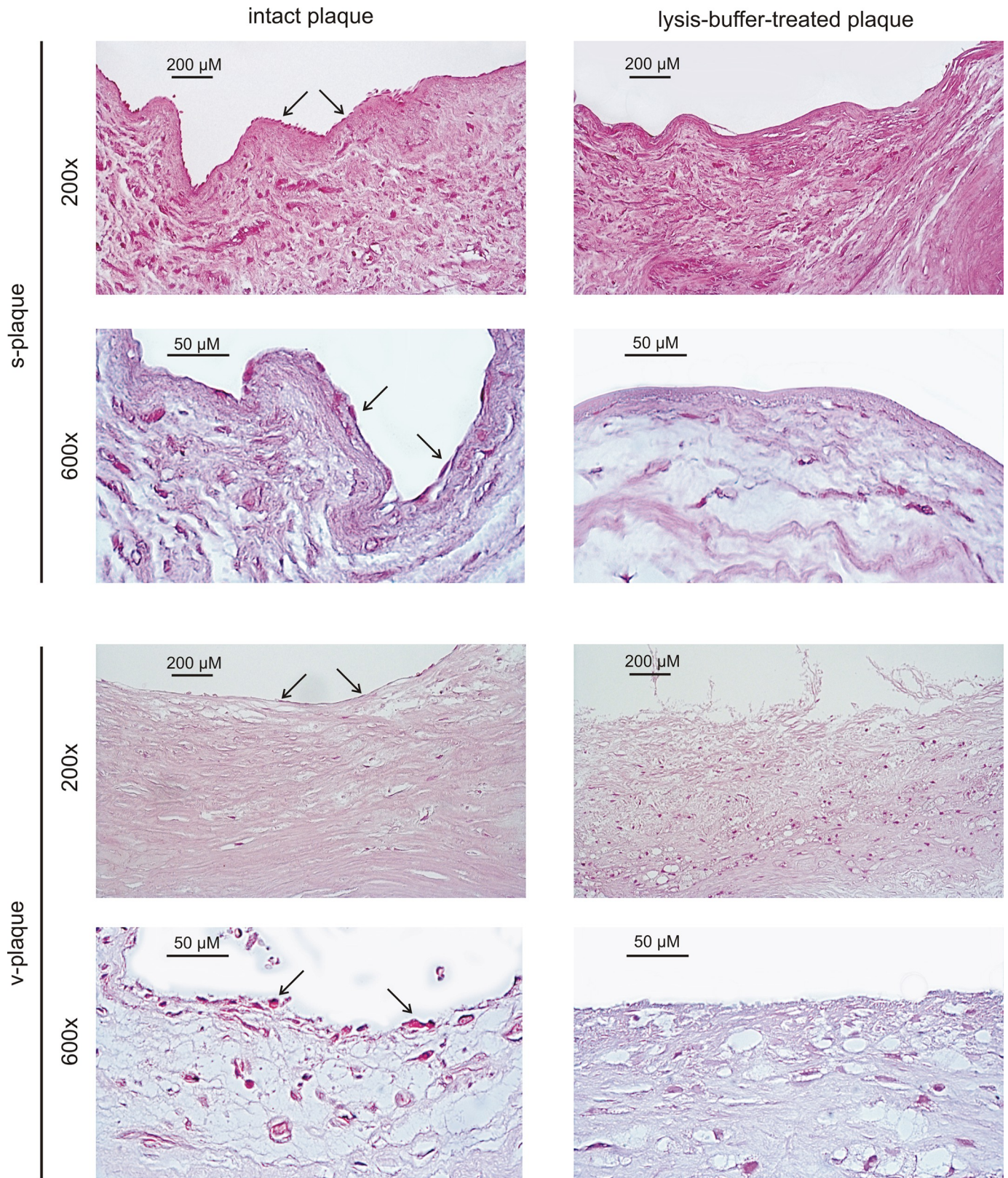


Fig 1. Lysis-buffer-treated versus intact plaques. H&E staining of s- and v-plaques on shows elimination of plaque surface cells (arrows) after lysis-buffer treatment.

<https://doi.org/10.1371/journal.pone.0218892.g001>

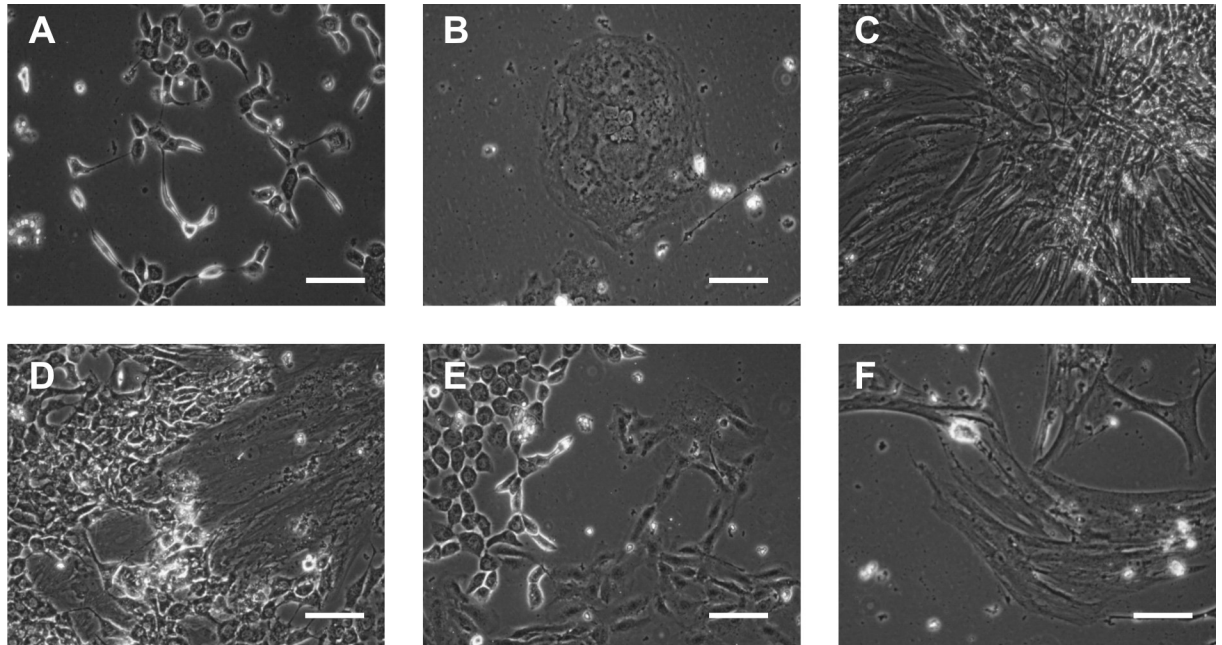


Fig 2. PIMC morphology. Cells from v-plaque at passage 0 (cultured for 15 days). Phase contrast images representative of the 48 obtained PIMC cultures. Scale bars represent 40 μm .

<https://doi.org/10.1371/journal.pone.0218892.g002>

hydrolyzed the dense plaque connective tissue without noticeable influence on PIMC viability and subsequently this protocol was used to isolate PIMC.

The clonal growth of PIMC was observed approximately 10–15 days after seeding in culture dishes. At this stage, PIMC cultures often contained several morphological types of cells (Fig 2). PIMC differed in shape, size, type of cell-to-cell contacts and the colony pattern. One type of cells with well-defined borders formed branched strands (Fig 2A), while other cells grew in multilayered colonies (Fig 2B–2E). The colonies of large elongated ($80 \pm 20 \times 20 \pm 10 \mu\text{m}$) cells with numerous contacts were frequently found in PIMC cultures (Fig 2F). All described cell morphotypes proliferated, but after subculturing cell cultures became more homogenous. It should be noted, that not all cultured PIMC were characterized by the presence of multiple cell morphotypes and large cells (Fig 2F) were the predominant type of cells in most of the plaque cultures.

We managed to isolate PIMC from 30 out of 35 s-plaques and 35 out of 56 v-plaques. Among them PIMC from only 28 s- and 20 v-plaques proliferate *in vitro* (Table 3). Apparently, some plaques did not yield enough cells which could be cultured, especially vulnerable plaques, which are known to have extensive cell death regions (necrotic cores) [1].

We have compared the efficacy of s- and v-PIMC isolation, simultaneously extracting cells from plaque tissue sample of similar weight ($400 \pm 30 \text{ mg}$) and estimating the quantity of cells after 20-days culturing. The density of s-PIMC in culture dishes was about 10^4 per cm^2 versus 2×10^3 per cm^2 for v-PIMC. PIMC from s- and v-plaques doubled in 5 ± 2 days and 8 ± 2 days,

Table 3. The efficacy of PIMC isolation and culture from stable (n = 35) and vulnerable (n = 56) plaques.

	Stable plaques (n = 35)	Vulnerable plaques (n = 56)
Successful PIMC isolation	30 (86 %)	35 (62 %)
PIMC cultured at least 2 passages	28 (80 %)	20 (36 %)

<https://doi.org/10.1371/journal.pone.0218892.t003>

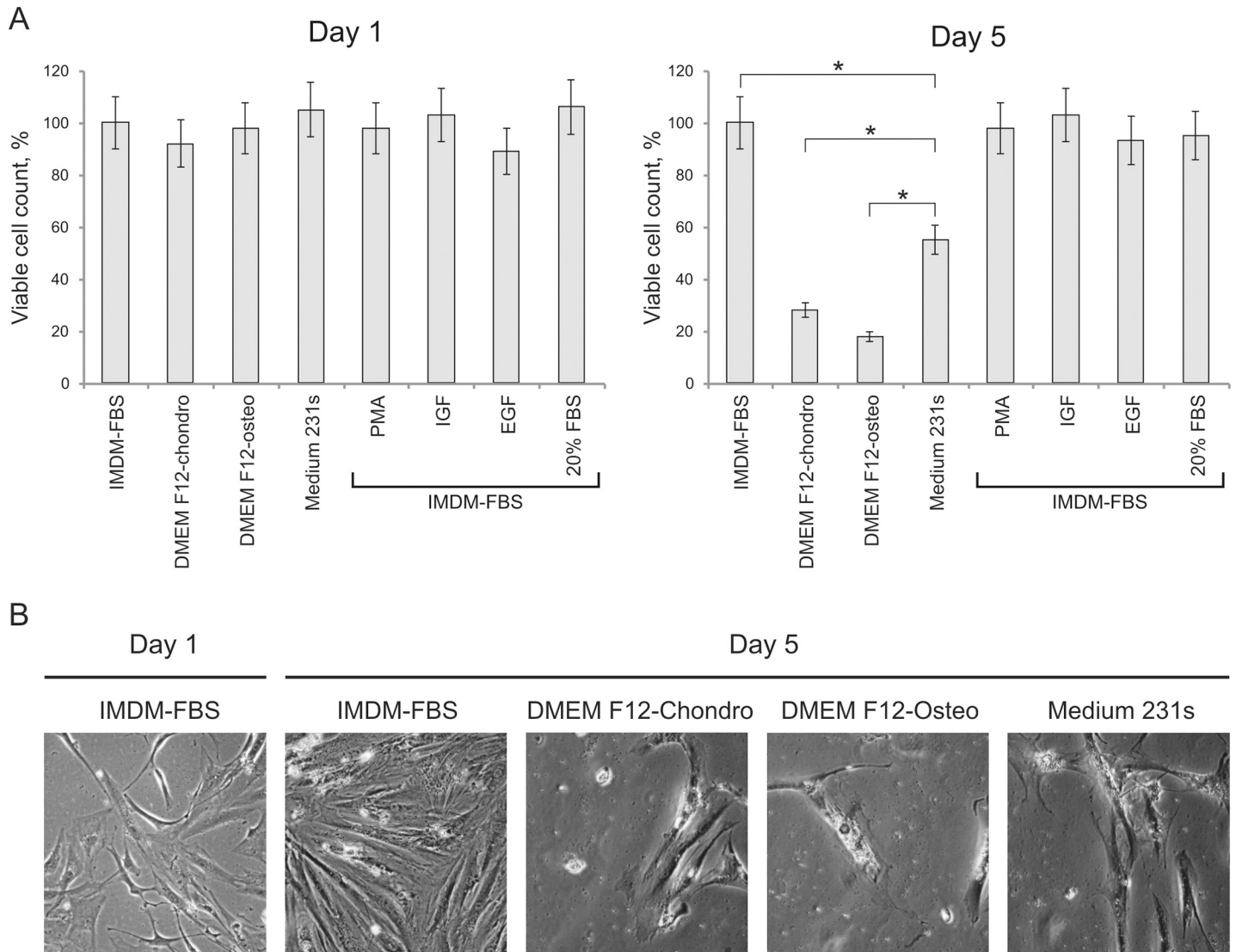


Fig 3. PIMC in various culturing conditions. A. s-PIMC viability on the next day after subculturing (Day 1) and after 5-day incubation (Day 5) in various culture media or with different growth stimulators normalized to viability of s-PIMC in IMDM-FBS (first column of the corresponding panel). Mean of three replicates with standard deviation. Asterisk (*) indicates a significant difference in cell viability ($P < 0.0001$, T-test). B. Phase-contrast microscopy images of s-PIMC on Day 1 and Day 5. Representative images from two independent experiments are shown. Scale bars represent 20 μ m.

<https://doi.org/10.1371/journal.pone.0218892.g003>

respectively, thus indicating that cells from stable plaques proliferate faster. PIMC remained viable for 40–45 days while being subcultured 2–3 times. Further cultivation resulted in cell detachment from culture dishes and significant amount of cell death was observed. In this study, cells on the first passage were used in all experiments.

We tested several different culture media compositions for PIMC culturing. Given the presence of calcification in atherosclerotic plaques and the potential SMC origin of PIMC, we tested if PIMC would grow on chondrogenic/osteogenic culture media or Medium 231s, designed for SMC culture. In Medium 231s cells were viable, but did not proliferate as compared to IMDM-FBS, where cells doubled after a 5-day incubation. In IMDM-chondro and IMDM-osteo cells were even less viable, than in Medium 231s (Fig 3A and 3B), suggesting a possible cell death. Addition of extra FBS (up to 20%) or proliferation-inducing agents (PMA,

IGF-1, EGF) did not increase PIMC proliferation rate in IMDM-FBS (Fig 3A). Presumably, PIMC culturing in specific media induces terminal differentiation and apoptosis, however, from our results we can only conclude that PIMC are sufficiently different from the cells, which are normally cultured in these media. As such, IMDM-FBS was the optimal medium for PIMC culture from the three tested media.

Gene expression profiling of PIMC

We performed high-throughput sequencing of PIMC polyA-enriched transcriptome, isolated from two stable and two vulnerable atherosclerotic plaques. For each sample we obtained up to 15 million reads (S3 Table), of which over 95% mapped to the human genome (GRCh38 Ensembl release 91). GC content of all samples followed a normal distribution with expected peaks at 40–60%. To perform a general comparison of gene expression profiles of s- and v-PIMC with other cell types we used publicly available RNA-seq datasets of cells involved in atherogenesis: smooth muscle cells (HCASMC), monocyte-derived macrophages (MCRPH), vascular endothelial cells (HUVEC and HAEC), adventitia fibroblasts (FAADV), chondrocytes (AChKJ) and osteoblasts (HOB).

The principal component analysis (PCA) demonstrated major differences between PIMC and other cell types. Connective tissue cells (fibroblasts, VSMC, chondrocytes and osteoblasts) were clustered together; PIMC, endothelial cells and macrophages all formed separate well-defined groups (Fig 4). Furthermore, heatmaps showing the relative mRNA expression of key markers of various atherosclerosis-related cell types (smooth muscle-, endothelial, macrophage, chondrocyte and osteoblast) display the unique PIMC expression pattern of these proteins (Fig 5). Most of VSMC markers were highly expressed in PIMC - 2–40 fold higher FPKM than in control primary VSMC. One exception was the collagen I gene (*Col1A1*), which was expressed at a 50% FPKM level (Fig 5A). Macrophage markers were also expressed in PIMC, although their pattern was different from the control cultured macrophages, probably due to great flexibility and plasticity of both cell types depending on signals in their environments (Fig 5D) [24]. PIMC expressed several endothelial markers, however, RPKM was lower than in

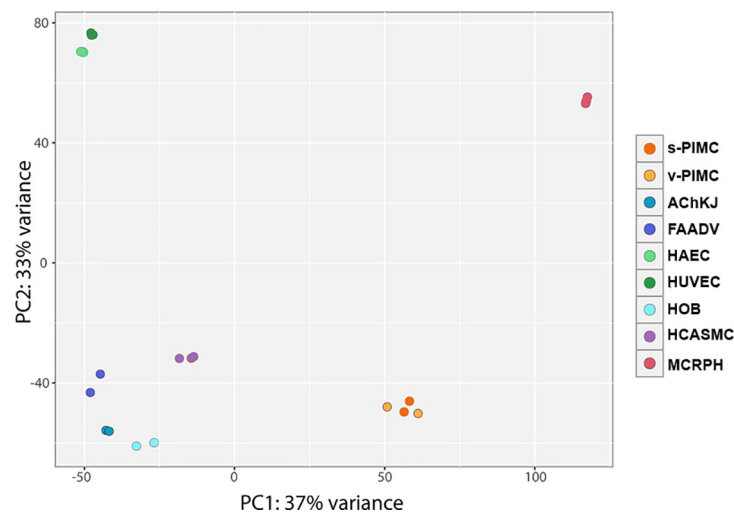


Fig 4. Principal component analysis of gene expression profiles. RNA-Seq gene expression data of v-PIMC (n = 2), s-PIMC (n = 2) and cells involved in atherogenesis (vascular smooth muscle cells–HCASMC (n = 3), endotheliocytes–HUVEC (n = 3) and HAEC (n = 3), macrophages MCRPH (n = 3), chondrocytes–AChKJ (n = 2), osteoblasts HOB (n = 2) and fibroblasts–FAADV (n = 2)). PCA demonstrates the major components (PC1 and PC2) of the variance to separate PIMC from other cells.

<https://doi.org/10.1371/journal.pone.0218892.g004>

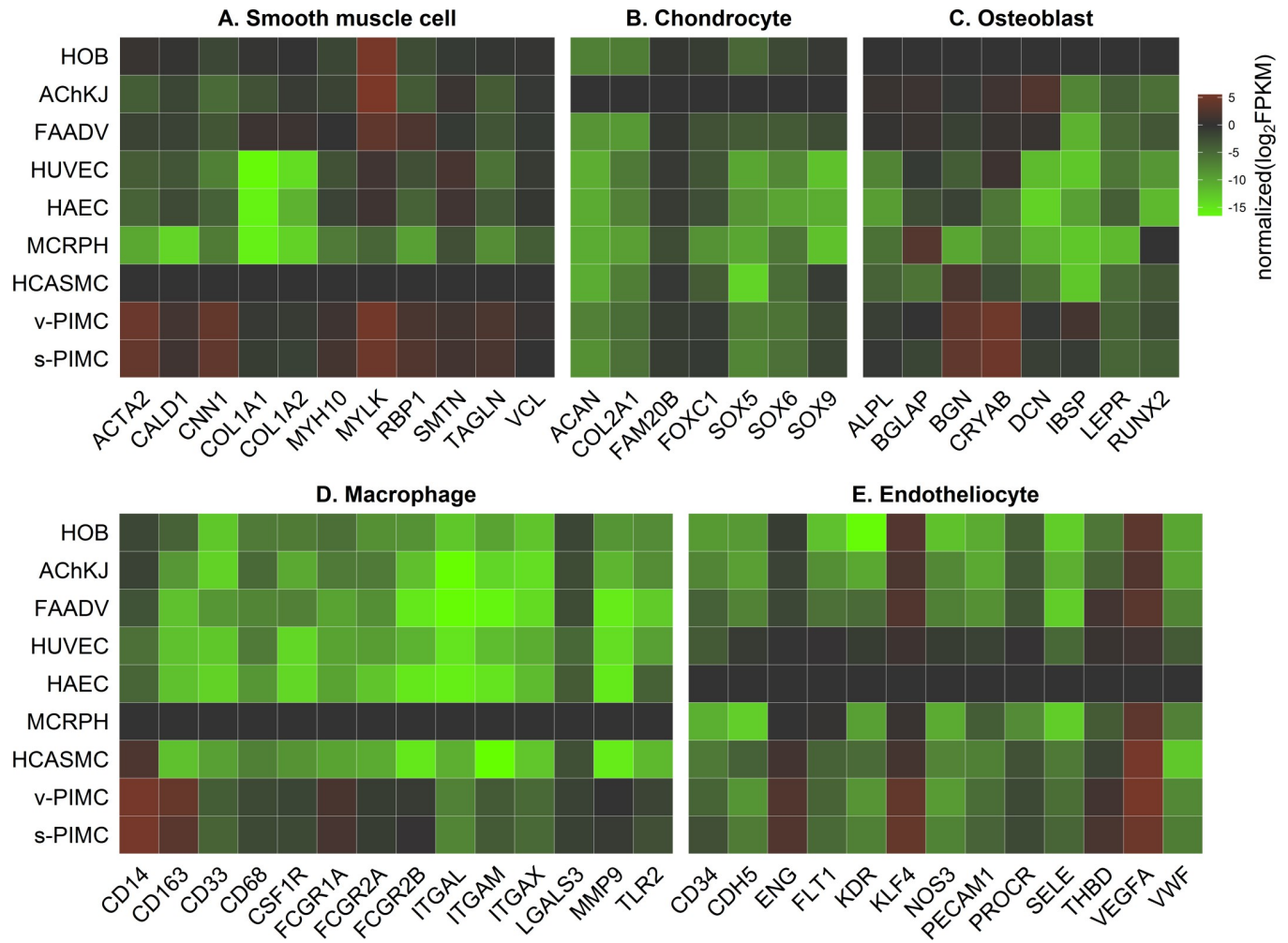


Fig 5. Heatmaps of cell type-specific gene expression. RNA-Seq gene expression data of v-PIMC (n = 2), s-PIMC (n = 2) and cells involved in atherosclerosis (vascular smooth muscle cells–HCASMC (n = 3), endotheliocytes–HUVEC (n = 3) and HAEC (n = 3), macrophages MCRPH (n = 3), chondrocytes–AChKJ (n = 2), osteoblasts HOB (n = 2) and fibroblasts–FAADV (n = 2)). Panels A-E show the expression of cell-type specific markers. Expression of each marker is normalized to the expression level in the corresponding specific cell type. Red: upregulation; green: downregulation.

<https://doi.org/10.1371/journal.pone.0218892.g005>

HUVEC and HAEC cells (Fig 5E), probably due to elimination of plaque surface endothelial cells with lysis buffer (Fig 1). Judging by the expression of cell-specific markers PIMC differ from chondrocytes, but are closely related to osteoblasts (Fig 5B and 5C).

We identified eight genes that were significantly differentially expressed (DEGs) in s-PIMC compared to v-PIMC at an FDR < 0.05 (Table 4). The number of DEGs was relatively low, possibly due to the low number of analyzed plaque samples, however, most of the identified genes are involved in atherosclerosis, suggesting PIMC cultures as a suitable tool for investigation of the mechanisms of atherosclerosis and search of plaque vulnerability markers.

PIMC immunophenotyping

We have analysed the expression of smooth muscle cells marker α -SMA, macrophage marker CD14, extracellular matrix proteins aggrecan, fibronectin, neovascularisation markers VEGF-A, CD105, cellular adhesion receptor CD31 and progenitor/differentiation receptor CD34 in three s-PIMC and three v-PIMC samples using immunofluorescence staining. Despite PIMC heterogeneity, the expression of selected markers was observed in about 80% of

Table 4. Differentially expressed genes in v-PIMC (v) compared to s-PIMC (s).

Downregula-ted genes	Protein coded	Gene function	Fold change (v/s)	P value	FDR
MMP1	matrix metalloproteinase 1	Metalloprotease specific to Collagens type I, II, III	0,195	8,94E-19	1,55E-14
NPY1R	neuropeptide Y receptor Y1	G-protein-coupled receptor superfamily, receptor of NPY	0,282	5,61E-10	4,86E-06
Upregulatedgenes	Proteincoded	Genefunction	Expression fold change (v/s)	P value	FDR
PSG4	pregnancy specific beta-1-glycoprotein 4	Innate immunity (?)	2,951	1,85E-07	0,00064
IL1B	interleukin 1 beta	Pro-inflammatory cytokine	2,907	3,93E-07	0,001
CYBB	cytochrome b-245 beta chain (NOX2)	superoxide generating enzyme	2,232	1,16E-05	0,029
DSG2	desmoglein 2	cell adhesion	2,452	2,26E-05	0,044
IBSP	integrin binding sialoprotein	structural protein of the bone matrix	2,375	3,05E-05	0,048
CPNE7	copine 7	calcium-dependent membrane-binding protein	2,350	2,99E-05	0,048

<https://doi.org/10.1371/journal.pone.0218892.t004>

cells, and the patterns were similar for PIMC from different patients. The dense granules with nonspecific fluorescence observed in some PIMC were excluded from IF analysis.

Staining revealed expression pattern of several SMC, macrophage, chondrocyte and endotheliocyte markers in PIMC from s- and v-plaques, and allowed for a comparison with VSMC, HCC and HUVEC (Fig 6). The expression of SMC marker α -SMA was detected in both types of plaque cells, but cells from s-plaques expressed more α -SMA. Monocyte/macrophage marker CD14 was expressed in PIMC and localized mainly in the cytoplasm.

Plaque cells expressed chondrocyte marker aggrecan, and its localization in cytoplasm and intracellular vesicles was similar to hyaline cartilage chondrocytes. Another ECM protein fibronectin was also expressed in PIMC, especially those isolated from stable plaques.

The expression of CD34, VEGF-A, CD31 (PECAM1) and CD105 (endoglin) was also observed in both types of PIMC. The expression of CD34, VEGF-A was higher in s-PIMC, whereas CD31 expression was higher and more conventionally localized in v-PIMC. CD105 was highly expressed in all PIMC, and its localization was similar to HUVEC.

Discussion

Various cell types are considered to be involved in atherosclerotic plaque development [28]. Bonnanno et al characterized cell populations in human carotid plaques using flow cytometry stating that approximately half of the cells are inflammatory mononuclear cells ($26.16 \pm 14.2\%$ lymphocytes; $17.34 \pm 12.6\%$ monocytes/macrophages) and another half are SMC ($56.50 \pm 20.3\%$) [7]. Furthermore, osteoblast- and osteoclast-like cells have been identified near areas of plaque mineral deposits [29].

The data on the plaque cell populations, dense plaque structure and its slow growth suggest that relatively low number of cells is responsible for producing plaque connective tissue components. We suggest a new approach to isolation of cells entombed in the plaque connective tissue - plaque inner mass cells (PIMC) - and suggest their role as the key cell determinants of plaque structure. These cells are undoubtedly influenced by outer stimuli, but the response is modulated by the PIMC own phenotype as well as the density and structure of the surrounding

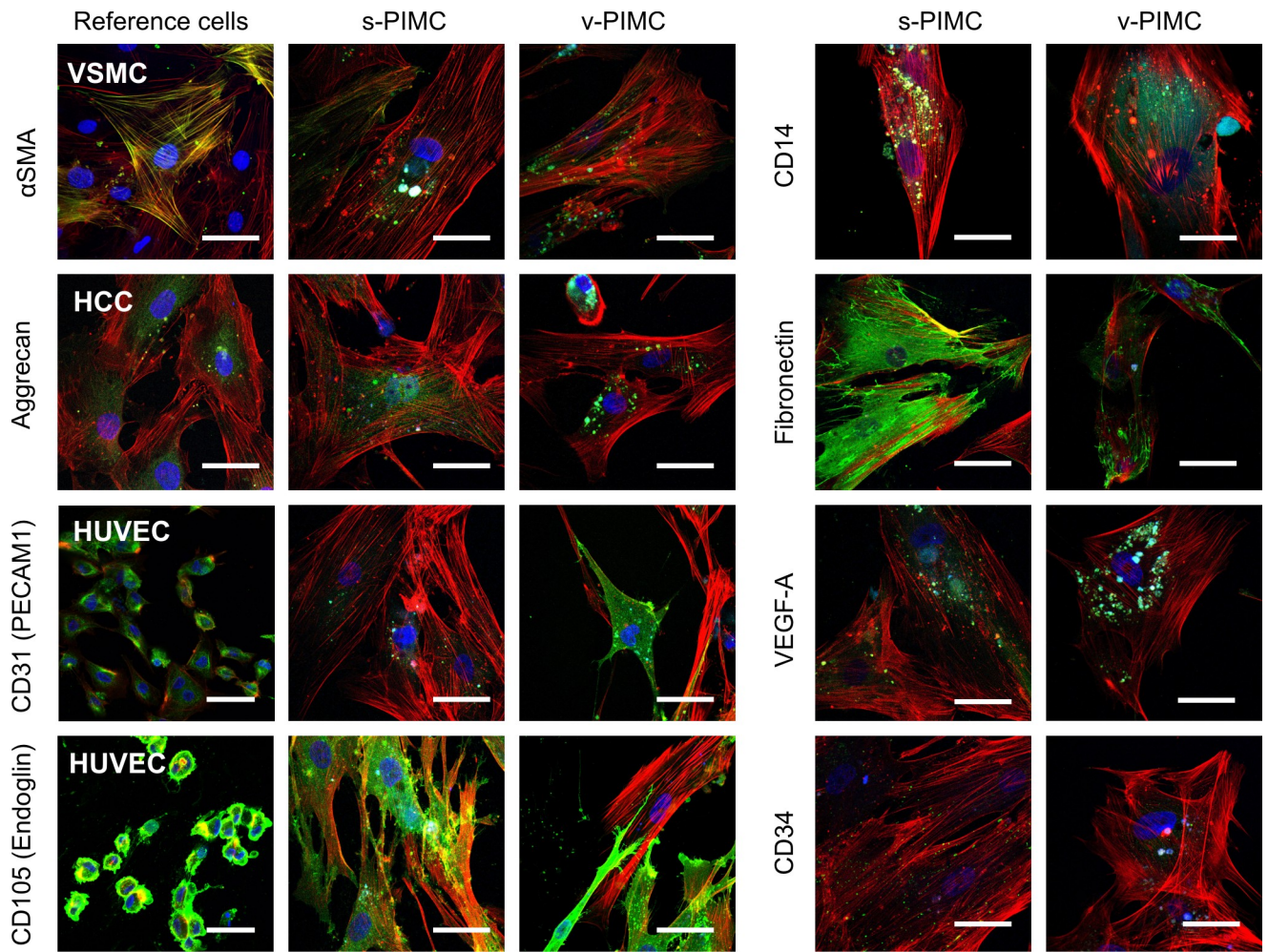


Fig 6. Immunofluorescence staining of s- and v-PIMC. Specific proteins are stained green (AlexaFluor 488), f-actin and nuclei are stained red and blue, correspondingly. In the example column VSMC, HCC and HUVEC are stained for indicated markers. Representative images were selected from three independent experiments performed using PIMC obtained from different donors are shown. Scale bars represent 50 μ m.

<https://doi.org/10.1371/journal.pone.0218892.g006>

connective tissue. Thus, PIMC may prove useful in exploring the response of plaque cells to external signals and assist in the study of the general mechanisms of growth and functioning of atherosclerotic lesions.

In this study, we have isolated and cultured atherosclerotic plaque inner mass cells using an optimized protocol for lysis of plaque surface cells, followed by hydrolysis of plaque tissue with subsequent inner mass cell isolation and selection for conditions for efficient PIMC cultivation. As we have expected, the quantity of these cells and their proliferative activity *in vitro* is relatively low: the doubling time is about 5 and 8 days for cells from stable and vulnerable plaques, respectively, as compared to approximately two days for VSMC from healthy aorta [30]. Attempts to improve proliferation of PIMC cells with either the culture media variations, addition of growth factors or FBS concentration increase were not successful. Presumably, *in vivo* plaque cells' proliferation is also limited by the constrained diffusion in the dense plaque tissue, lack of the nutrition and necessary growth factors. Advanced atherosclerotic plaques can grow for years before removal by CEA [31] and therefore it's no wonder that isolated PIMC proliferate slowly. Our data showed that PIMC could contain several morphological types of cells after isolation, but during passaging cell culture become more homogenous. It is not clear if this

phenomenon is concerned with the overgrowth of cells with higher proliferative activity or *in vitro* dedifferentiation of PIMC due to their plasticity.

High-throughput mRNA sequencing of s- and v-PIMC demonstrated that PIMC have a unique gene expression profile. The principal component analysis showed that plaque cells do not group with any of cells involved in atherogenesis, however, all four PIMC cultures group together, indicating overall reproducibility of PIMC extraction protocol. Moreover, PIMC express mRNAs encoding for markers of atherosclerosis, as well as markers of macrophages, VSMC, endotheliocytes, chondrocytes and osteoblasts. The complicated gene expression profile of PIMC could be attributed to their heterogeneity and/or plasticity of plaque cells, since during atherogenesis cells may lose or acquire certain markers [32].

The RNA-Seq data on the expression of both SMC and macrophage markers in PIMC are supported with the positive immunofluorescence staining of the cultured plaque cells for SMC marker α -SMA (*Acta 2*) and monocyte/macrophage marker CD14. It is known that CD14 + monocytes and macrophages are involved in plaque inflammation and plaque structure remodeling [33]. Until recently, it was generally assumed that intimal proliferative or synthetic smooth muscle cells originate from medial contractile smooth muscle cells, while macrophages differentiate from monocytes that transmigrate through the endothelial layer upon vascular injury [33,34]. However, recent lineage tracing studies have shown that dividing plaque cells into macrophages and SMC based on the traditional markers' expression is not accurate: during atherogenesis SMC acquire pro-inflammatory phenotype, losing the expression of SMC markers and gaining macrophage markers [35]. Regulation of SMC phenotype switching depends on the location of cells in the plaque and, apparently, is regulated through the stem cell and induced pluripotent stem cell factor KLF4 [36]. The opposite is also possible: plaque macrophages (or at least cells of hematopoietic origin) may transdifferentiate into ECM-producing cells and express SMC markers, particularly α -SMA [32]. The decrease in transdifferentiated macrophages and increase in pro-inflammatory M1 macrophages, as well as SMC transdifferentiation to a macrophage phenotype lead to the plaque vulnerability [32,35].

Along with SMC-to-macrophage transdifferentiation, the potential of SMC to acquire the phenotype of chondrocyte-like cells has been reported [37]. Moreover, myeloid calcifying cells (monocytes expressing osteocalcin and bone alkaline phosphatase) promote atherosclerotic calcification [38]. The presence of calcification in atherosclerotic plaques suggests the presence of cells similar to chondrocytes, osteocytes and even osteoclasts [29]. In PIMC we have also observed the mRNA expression of certain chondrocyte and osteoblast markers, which was also confirmed by immunofluorescence staining for aggrecan. For years, a debate revolved around whether calcification is a marker of plaque stability. Current consensus is that strong calcification indicates a highly vulnerable patient rather than a vulnerable plaque [6].

PIMC highly express ECM and adhesion protein fibronectin, which role in atherogenesis is rather controversial. It has been shown that fibronectin deposition at the sites of early plaque formation promotes atherosclerosis, but also promotes the formation of the protective fibrous cap [39,40].

PIMC express such proteins as CD34, CD31, VEGF-A and large amounts of CD105. CD34 is considered as the common progenitor and dedifferentiation marker and is expressed in various cell types, including mesenchymal stromal cells, interstitial cells and vascular endothelial cells [41]. CD31 (PECAM1) receptor is expressed exclusively by the blood vessel interfacing cells (leukocytes, platelets and endotheliocytes) and plays a major role in vascular homeostasis: adhesion, angiogenesis, activation of T-cells and platelets. This receptor has several isoforms which may have inverse functions. For instance, normally CD31 acts to maintain endothelial integrity, however, the pro-inflammatory cytokines promote the loss of its domain responsible for cell contacts, resulting in increased vascular permeability [42].

Moreover, the loss of inhibitory peptide in CD31 structure leads to the increased T-cell activation and migration to atherosclerotic lesion [43].

Angiogenesis markers VEGF-A and CD105 are mainly expressed in endothelial cells, though in atherosclerotic lesions they were also detected in macrophages and partially differentiated VSMC [44,45]. Neovascularization affects the atherosclerosis progression providing plaque with oxygen and lipoproteins, promoting plaque growth and leukocyte infiltration. Immaturity of neo-vessels also leads to intra-plaque hemorrhages, which are among the key factors for plaque vulnerability [5].

The new evidence about the nature of plaque vulnerability and novel non-invasive methods to determine plaque type are urgently needed. While in symptomatic carotid occlusions CEA is obligatory, in asymptomatic lesions surgery may not be required [46]. We have identified ten differentially expressed genes ($FDR \leq 0.05$) in v-PIMC vs s-PIMC, most of which are related to atherogenesis. Our data on matrix metalloproteinase 1 (MMP1) (collagenase which preferentially cleaves type III collagen [47]) hypoexpression in v-PIMC versus s-PIMC support previous reports on MMP-1 from transgenic apolipoprotein E knockout mice [48]. Although metalloproteinases are believed to contribute to plaque expansion and rupture [47], our data suggest that remodeling of the plaque ECM by MMP-1 is beneficial in the progression of the lesions.

The pro-atherogenic roles of the bone sialoprotein (IBSP), superoxide generating enzyme NOX2 and the inflammatory cytokine IL-1 β have been previously described [49–51]. The effects of these proteins are consonant since oxidative stress in atherosclerotic lesions can induce IBSP expression via oxidized low-density lipoproteins (oxLDLs) [52] and promote inflammation through redox-sensitive transcription factors (e.g., NF- κ B and AP-1) [50]. While the involvement of IL-1 β in plaque vulnerability has already been established [51], the contribution of NOX-2 to plaque rupture remains uncertain [50]. Our data on the elevated expression of IBSP, IL-1 β and NOX2 in v-PIMC compared to s-PIMC support the hypothesis viewing these proteins as plaque vulnerability markers.

The differential expression of neuropeptide Y receptor Y1 (NPY1R) may account for the slower growth of v-PIMC versus s-PIMC since activation of Y1 receptor stimulates mitogenesis in VSMC [53]. The involvement of NPY and its receptors in atherogenesis and the decrease in expression of NPY1R mRNA in plaque SMCs compared to control healthy SMCs have been shown recently [10].

Little is known about copine7 (CPNE7), pregnancy-specific glycoprotein 4 (PSG4) and desmoglein2 (DSG2) proteins and to our knowledge there is no evidence of their involvement in the atherosclerosis progression. However, their involvement in atherosclerosis-related processes, such as cellular adhesion, neo-angiogenesis (DSG2, PSGs) [54,55] and innate immunity (PSGs, CPNE7) [55,56] suggests these proteins as potential atherosclerosis markers.

Conclusion

Despite the fact that cultured cells may differ from their original *in vivo* phenotype, they can maintain the expression of crucial markers and their interrogation may inform our knowledge of the original tissue. Cultured plaque cells may be used to search for the new markers of plaque vulnerability, as well as the factors defining and changing the phenotype of plaque cells. Moreover, PIMC may be a good model for *in vitro* modulation of plaque cell death, regulation of interleukin and adhesion molecule expression and testing of anti-atherosclerosis drugs.

Supporting information

S1 Table. Primer sequences.

(PDF)

S2 Table. The expression of miRNA in v-plaque samples (v) and s-plaque samples (s) before and after treatment with lysis buffer.

(PDF)

S3 Table. RNA-seq data characteristics.

(PDF)

Acknowledgments

The authors thank the Center for Collective Use of Microscopic Analysis of Biological Objects, SB RAS (<http://www.bionet.nsc.ru/microscopy>) for highly qualified technical assistance and Dr. Ivan Zaporozhchenko for the productive discussion of the results.

Author Contributions

Conceptualization: Andrey A. Karpenko, Pavel P. Laktionov.

Formal analysis: Petr P. Laktionov.

Funding acquisition: Pavel P. Laktionov.

Investigation: Olga A. Novikova, Zhanna K. Nazarkina, Ivan S. Murashov, Roman V. Deev.

Methodology: Zhanna K. Nazarkina, Boris P. Chelobanov, Roman V. Deev, Pavel P. Laktionov.

Project administration: Evgeny A. Pokushalov, Andrey A. Karpenko, Pavel P. Laktionov.

Software: Petr P. Laktionov.

Supervision: Andrey A. Karpenko, Pavel P. Laktionov.

Validation: Zhanna K. Nazarkina, Boris P. Chelobanov.

Visualization: Anna V. Cherepanova.

Writing – original draft: Anna V. Cherepanova.

Writing – review & editing: Pavel P. Laktionov.

References

1. Libby P, Ridker PM, Hansson GK. Progress and challenges in translating the biology of atherosclerosis. *Nature*. 2011; 473: 317–325. <https://doi.org/10.1038/nature10146> PMID: 21593864
2. Gisterå A, Hansson GK. The immunology of atherosclerosis. *Nat Rev Nephrol*. 2017; <https://doi.org/10.1038/nrneph.2017.51> PMID: 28392564
3. Rosas E, Sobenin I, Orekhov A, Edelman ER, Balcells M. Importance of receptor-targeted systems in the battle against atherosclerosis. *Curr Pharm Des*. 2013; 19: 5897–903. <https://doi.org/10.2174/1381612811319330010> PMID: 23438961
4. Heo K, Fujiwara K, Abe J. Shear Stress and Atherosclerosis. 2014; 37: 435–440.
5. Michel JB, Virmani R, Arbustini E, Pasterkamp G. Intraplaque haemorrhages as the trigger of plaque vulnerability. *Eur Heart J*. 2011; 32: 1977–1985. <https://doi.org/10.1093/eurheartj/ehr054> PMID: 21398643
6. Alexopoulos N, Raggi P. Calcification in atherosclerosis. *Nat Rev Cardiol*. 2009; 6: 681–688. <https://doi.org/10.1038/nrcardio.2009.165> PMID: 19786983
7. Bonanno E, Mauriello A, Partenzi A, Anemona L, Spagnoli LG. Flow cytometry analysis of atherosclerotic plaque cells from human carotids: A validation study. *Cytometry*. 2000; 39: 158–165. [https://doi.org/10.1002/\(SICI\)1097-0320\(20000201\)39:2<158::AID-CYTO9>3.0.CO;2-8](https://doi.org/10.1002/(SICI)1097-0320(20000201)39:2<158::AID-CYTO9>3.0.CO;2-8) PMID: 10679734

8. Bennett MR, Evan GI, Schwartz SM. Apoptosis of human vascular smooth muscle cells derived from normal vessels and coronary atherosclerotic plaques. *J Clin Invest*. 1995; 95: 2266–2274. <https://doi.org/10.1172/JCI117917> PMID: 7738191
9. Dhume AS, Agrawal DK. Inability of vascular smooth muscle cells to proceed beyond S phase of cell cycle, and increased apoptosis in symptomatic carotid artery disease. *J Vasc Surg*. 2003; 38: 155–61. [https://doi.org/10.1016/S0741-5214\(02\)75468-2](https://doi.org/10.1016/S0741-5214(02)75468-2) PMID: 12844105
10. Pankajakshan D, Jia G, Pipinos I, Tyndall SH, Agrawal DK. Neuropeptide Y receptors in carotid plaques of symptomatic and asymptomatic patients: Effect of inflammatory cytokines. *Exp Mol Pathol*. 2011; 90: 280–286. <https://doi.org/10.1016/j.yexmp.2011.02.005> PMID: 21352822
11. Koenen RR, Weber C. Chemokines: Established and novel targets in atherosclerosis. *EMBO Mol Med*. 2011; 3: 713–725. <https://doi.org/10.1002/emmm.201100183> PMID: 22038924
12. Bennett S, Breit SN. Variables in the isolation and culture of human monocytes that are of particular relevance to studies of HIV. *J Leukoc Biol*. 1994; 56: 236–40. <https://doi.org/10.1002/jlb.56.3.236> PMID: 8083595
13. Sary HC, Chandler AB, Dinsmore RE, Fuster V, Glagov S, Jr WI, et al. A Definition of Advanced Types of Atherosclerotic Lesions and a Histological Classification of Atherosclerosis Atherosclerotic Lesion Types Advanced by Histology Type IV Lesions. *Circulation*. 1995; 92: 1355–1374. <https://doi.org/10.1161/01.CIR.92.5.1355> PMID: 7648691
14. Lovett JK, Gallagher PJ, Hands LJ, Walton J, Rothwell PM. Histological Correlates of Carotid Plaque Surface Morphology on Lumen Contrast Imaging. *Circulation*. 2004; 110: 2190–2197. <https://doi.org/10.1161/01.CIR.0000144307.82502.32> PMID: 15466633
15. Virmani R, Burke A, Farb A, Kolodgie FD, Finn A V, Gold H. Pathology of the vulnerable plaque. In: Waksman R, Serruys PW, editors. *Handbook of the vulnerable plaque*. London: Taylor & Francis; 2004. pp. 33–48.
16. Lavrentieva A, Hatlapatka T, Neumann A, Weyand B, Kasper C. Potential for Osteogenic and Chondrogenic Differentiation of MSC. In: Weyand B., Dominici M., Hass R., Jacobs R. KC, editor. *Mesenchymal Stem Cells—Basics and Clinical Application I Advances in Biochemical Engineering/Biotechnology*. Berlin, Heidelberg: Springer; 2012. pp. 73–88. https://doi.org/10.1007/10_2012_133 PMID: 22457052
17. Jaffe EA, Nachman RL, Becker CG, Minick CR. Culture of human endothelial cells derived from umbilical veins. Identification by morphologic and immunologic criteria. *J Clin Invest*. 1973; <https://doi.org/10.1172/JCI107470> PMID: 4355998
18. Kopylova E, Noé L, Touzet H. SortMeRNA: Fast and accurate filtering of ribosomal RNAs in metatranscriptomic data. *Bioinformatics*. 2012; 28: 3211–3217. <https://doi.org/10.1093/bioinformatics/bts611> PMID: 23071270
19. Kim D, Langmead B, Salzberg SL. HISAT: a fast spliced aligner with low memory requirements. *Nat Methods*. 2015; 12: 357–360. <https://doi.org/10.1038/nmeth.3317> PMID: 25751142
20. Liao Y, Smyth GK, Shi W. FeatureCounts: An efficient general purpose program for assigning sequence reads to genomic features. *Bioinformatics*. 2014; 30: 923–930. <https://doi.org/10.1093/bioinformatics/btt656> PMID: 24227677
21. Love MI, Huber W, Anders S. Moderated estimation of fold change and dispersion for RNA-seq data with DESeq2. *Genome Biol*. 2014; 15: 1–21. <https://doi.org/10.1186/s13059-014-0550-8> PMID: 25516281
22. Bell RD, Long X, Lin M, Bergmann JH, Nanda V, Cowan SL, et al. Identification and initial functional characterization of a human vascular cell-enriched long noncoding RNA. *Arterioscler Thromb Vasc Biol*. 2014; 34: 1249–1259. <https://doi.org/10.1161/ATVBAHA.114.303240> PMID: 24578380
23. Ohta R, Niwa A, Taniguchi Y, Suzuki NM, Toga J, Yagi E, et al. Laminin-guided highly efficient endothelial commitment from human pluripotent stem cells. *Sci Rep*. 2016; 6: 1–12. <https://doi.org/10.1038/s41598-016-0001-8>
24. Ramirez RN, El-Ali NC, Mager MA, Wyman D, Conesa A, Mortazavi A. Dynamic Gene Regulatory Networks of Human Myeloid Differentiation. *Cell Syst*. 2017; 4: 416–429.e3. <https://doi.org/10.1016/j.cels.2017.03.005> PMID: 28365152
25. Blondal T, Nielsen SJ, Baker A, Andreasen D, Mouritzen P, Teilum MW, et al. Assessing sample and miRNA profile quality in serum and plasma or other biofluids. *Methods*. 2013; 59: S1–S6. <https://doi.org/10.1016/j.ymeth.2012.09.015> PMID: 23036329
26. Patino WD. Atherosclerotic Plaque Macrophage Transcriptional Regulators Are Expressed in Blood and Modulated by Tristetraprolin. *Circ Res*. 2006; 98: 1282–1289. <https://doi.org/10.1161/01.RES.0000222284.48288.28> PMID: 16614304
27. Lau TT, Peck Y, Huang W, Wang D. Optimization of Chondrocyte Isolation and Phenotype Characterization for Cartilage Tissue Engineering. *Tissue Eng Part C Methods*. 2015; 21: 105–111. <https://doi.org/10.1089/ten.TEC.2014.0159> PMID: 24918498

28. Bot I, Kuiper J. The origin of atherosclerotic plaque cells: Plasticity or not? *Atherosclerosis*. 2016; 251: 536–537. <https://doi.org/10.1016/j.atherosclerosis.2016.06.053> PMID: 27397736
29. Qiao JH, Mishra V, Fishbein MC, Sinha SK, Rajavashisth TB. Multinucleated giant cells in atherosclerotic plaques of human carotid arteries: Identification of osteoclast-like cells and their specific proteins in artery wall. *Exp Mol Pathol*. 2015; 99: 654–662. <https://doi.org/10.1016/j.yexmp.2015.11.010> PMID: 26551087
30. Proudfoot D, Shanahan C. *Human Cell Culture Protocols* [Internet]. Mitty RR, Hughes RD, editors. Totowa, NJ: Humana Press; 2012. <https://doi.org/10.1007/978-1-61779-367-7>
31. Van Gils MJ, Vukadinovic D, Van Dijk AC, Dippel DWJ, Niessen WJ, Van Der Lugt A. Carotid atherosclerotic plaque progression and change in plaque composition over time: A 5-year follow-up study using serial ct angiography. *Am J Neuroradiol*. 2012; 33: 1267–1273. <https://doi.org/10.3174/ajnr.A2970> PMID: 22345501
32. Tabas I, García-Cardeña G, Owens GK. Recent insights into the cellular biology of atherosclerosis. *J Cell Biol*. 2015; 209: 13–22. <https://doi.org/10.1083/jcb.201412052> PMID: 25869663
33. Libby P. Inflammation in atherosclerosis. *Nature*. 2002; 420: 868–874. <https://doi.org/10.1038/nature01323> PMID: 12490960
34. Alexander MR, Owens GK. Epigenetic Control of Smooth Muscle Cell Differentiation and Phenotypic Switching in Vascular Development and Disease. *Annu Rev Physiol*. 2012; 74: 13–40. <https://doi.org/10.1146/annurev-physiol-012110-142315> PMID: 22017177
35. Feil S, Fehrenbacher B, Lukowski R, Essmann F, Schulze-Osthoff K, Schaller M, et al. Transdifferentiation of Vascular Smooth Muscle Cells to Macrophage-Like Cells During Atherogenesis. *Circ Res*. 2014; 115: 662–667. <https://doi.org/10.1161/CIRCRESAHA.115.304634> PMID: 25070003
36. Bennett MR, Sinha S, Owens GK. Vascular Smooth Muscle Cells in Atherosclerosis. *Circ Res*. 2016; 118: 692–702. <https://doi.org/10.1161/CIRCRESAHA.115.306361> PMID: 26892967
37. Bobryshev Y V. Transdifferentiation of smooth muscle cells into chondrocytes in atherosclerotic arteriosin situ: implications for diffuse intimal calcification. *J Pathol*. 2005; 205: 641–650. <https://doi.org/10.1002/path.1743> PMID: 15776485
38. Albiero M, Rattazzi M, Menegazzo L, Boscaro E, Avogaro A, Fadini GP. Myeloid calcifying cells promote atherosclerotic calcification via paracrine activity and allograft inflammatory factor-1 overexpression. *Basic Res Cardiol*. 2013; 108: 368. <https://doi.org/10.1007/s00395-013-0368-7> PMID: 23800875
39. Rohwedder I, Montanez E, Beckmann K, Bengtsson E, Dunér P, Nilsson J, et al. Plasma fibronectin deficiency impedes atherosclerosis progression and fibrous cap formation. *EMBO Mol Med*. 2012; 4: 564–576. <https://doi.org/10.1002/emmm.201200237> PMID: 22514136
40. Moore KJ, Fisher EA. The double-edged sword of fibronectin in atherosclerosis. *EMBO Mol Med*. 2012; 4: 561–563. <https://doi.org/10.1002/emmm.201200238> PMID: 22649036
41. Sidney LE, Branch MJ, Dunphy SE, Dua HS, Hopkinson A. Concise review: Evidence for CD34 as a common marker for diverse progenitors. *Stem Cells*. 2014; 32: 1380–1389. <https://doi.org/10.1002/stem.1661> PMID: 24497003
42. Chistiakov DA, Orekhov AN, Bobryshev Y V. Endothelial PECAM-1 and its function in vascular physiology and atherogenic pathology. *Exp Mol Pathol*. 2016; 100: 409–415. <https://doi.org/10.1016/j.yexmp.2016.03.012> PMID: 27079772
43. Fornasa G, Clement M, Groyer E, Gaston AT, Khallou-Laschet J, Morvan M, et al. A CD31-derived peptide prevents angiotensin II-induced atherosclerosis progression and aneurysm formation. *Cardiovasc Res*. 2012; 94: 30–37. <https://doi.org/10.1093/cvr/cvs076> PMID: 22293851
44. Camaré C, Pucelle M, Nègre-Salvayre A, Salvayre R. Angiogenesis in the atherosclerotic plaque. *Redox Biol*. 2017; 12: 18–34. <https://doi.org/10.1016/j.redox.2017.01.007> PMID: 28212521
45. Nachtigal P, Zemankova (Vecerova) L, Rathouska J, Strasky. The role of endoglin in atherosclerosis. *Atherosclerosis*. 2012; 224: 4–11. <https://doi.org/10.1016/j.atherosclerosis.2012.03.001> PMID: 22460049
46. North American Symptomatic Carotid Endarterectomy Trial Collaborators, Barnett HJM, Taylor DW, Haynes RB, Sackett DL, Peerless SJ, Ferguson GG, Fox AJ, Rankin RN, Hachinski VC, Wiebers DO EM. Beneficial Effect of Carotid Endarterectomy in Symptomatic Patients with High-Grade Carotid Stenosis. *N Engl J Med*. 1991; 325: 445–453. <https://doi.org/10.1056/NEJM199108153250701> PMID: 1852179
47. Bäck M, Ketelhuth DFJ, Agewall S. Matrix Metalloproteinases in Atherothrombosis. *Prog Cardiovasc Dis*. 2010; 52: 410–428. <https://doi.org/10.1016/j.pcad.2009.12.002> PMID: 20226959
48. Lemaître V, O'Byrne TK, Borczuk AC, Okada Y, Tall AR, D'Armiento J. ApoE knockout mice expressing human matrix metalloproteinase-1 in macrophages have less advanced atherosclerosis. *J Clin Invest*. 2001; 107: 1227–1234. <https://doi.org/10.1172/JCI9626> PMID: 11375412

49. Ayari H, Bricca G. Microarray analysis reveals overexpression of IBSP in human carotid plaques. *Adv Med Sci.* 2012; 57: 334–340. <https://doi.org/10.2478/v10039-012-0056-0> PMID: 23314561
50. Kigawa Y, Miyazaki T, Lei X-F, Kim-Kaneyama J, Miyazaki A. Functional Heterogeneity of Nadph Oxidases in Atherosclerotic and Aneurysmal Diseases. *J Atheroscler Thromb.* 2017; 24: 1–13. <https://doi.org/10.5551/jat.33431> PMID: 27476665
51. Gargiulo S, Gamba P, Testa G, Rossin D, Biasi F, Poli G, et al. Relation between TLR4/NF- κ B signaling pathway activation by 27-hydroxycholesterol and 4-hydroxynonenal, and atherosclerotic plaque instability. *Aging Cell.* 2015; 14: 569–581. <https://doi.org/10.1111/acer.12322> PMID: 25757594
52. Farrokhi E, Chaleshtori MH, Samani KG. Oxidized Low-Density Lipoprotein Increases Bone Sialoprotein Expression in Vascular Smooth Muscle Cells Via Runt-Related Transcription Factor 2. *Am J Med Sci.* 2015; 349: 240–243. <https://doi.org/10.1097/MAJ.0000000000000381> PMID: 25504218
53. Pons J, Kittlinska J, Ji H, Lee EW, Zukowska Z. Mitogenic actions of neuropeptide Y in vascular smooth muscle cells: synergetic interactions with the β -adrenergic system. *Can J Physiol Pharmacol.* 2003; 81: 177–185. <https://doi.org/10.1139/y02-166> PMID: 12710532
54. Ebert LM, Tan LY, Johan MZ, Min KKM, Cockshell MP, Parham KA, et al. A non-canonical role for desmoglein-2 in endothelial cells: implications for neoangiogenesis. *Angiogenesis.* 2016; 19: 463–486. <https://doi.org/10.1007/s10456-016-9520-y> PMID: 27338829
55. Shanley DK, Kiely PA, Golla K, Allen S, Martin K, O’Riordan RT, et al. Pregnancy-Specific Glycoproteins Bind Integrin α IIb β 3 and Inhibit the Platelet-Fibrinogen Interaction. *PLoS One.* 2013; 8: 1–12. <https://doi.org/10.1371/journal.pone.0057491> PMID: 23469002
56. Atsumi T, Singh R, Sabharwal L, Bando H, Meng J, Arima Y, et al. Inflammation Amplifier, a New Paradigm in Cancer Biology. *Cancer Res.* 2014; 74: 8–14. <https://doi.org/10.1158/0008-5472.CAN-13-2322> PMID: 24362915