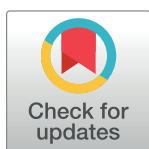


CORRECTION

Correction: Disentangling semantic and response learning effects in color-word contingency learning

Sebastian Geukes, Dirk Vorberg, Pienie Zwitserlood

There are errors in Figs 1, 3, 4 and 8. In Fig 1, the numbers 3 and 4 are missing on the response box and a 5 is missing in “150 ms”. In Figs 3 and 4, the error bars in conditions ColPos and ColPosFix are distorted. In Fig 8, there is an error in the legend. The authors have provided corrected versions here.



OPEN ACCESS

Citation: Geukes S, Vorberg D, Zwitserlood P (2019) Correction: Disentangling semantic and response learning effects in color-word contingency learning. PLoS ONE 14(6): e0218222. <https://doi.org/10.1371/journal.pone.0218222>

Published: June 6, 2019

Copyright: © 2019 Geukes et al. This is an open access article distributed under the terms of the [Creative Commons Attribution License](https://creativecommons.org/licenses/by/4.0/), which permits unrestricted use, distribution, and reproduction in any medium, provided the original author and source are credited.

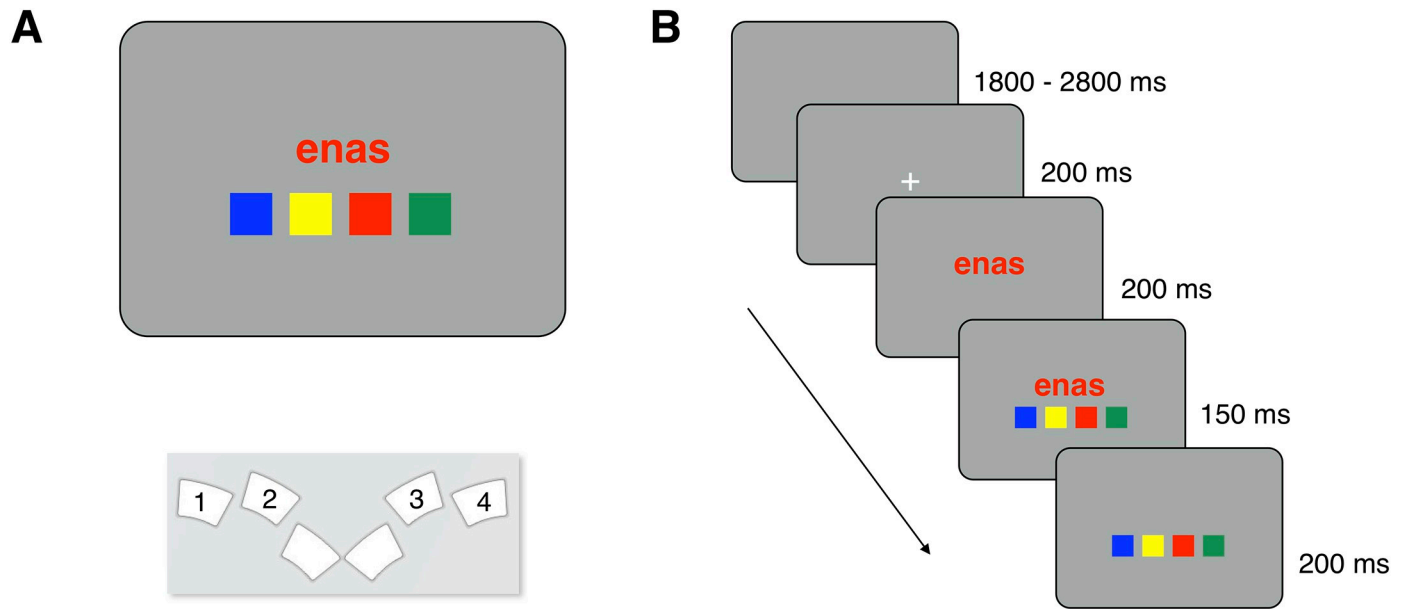


Fig 1. Stimulus display, spatial arrangement of response buttons, and trial timing. Panel A shows the typical stimulus display and response button layout in Experiments 1, 2, and 4. Panel B illustrates a typical trial. Numbers in Panel A schematically indicate which buttons of the response box were used in the experiments; actually, buttons were not labelled. The same timing of stimulus elements applied in all four experiments.

<https://doi.org/10.1371/journal.pone.0218222.g001>

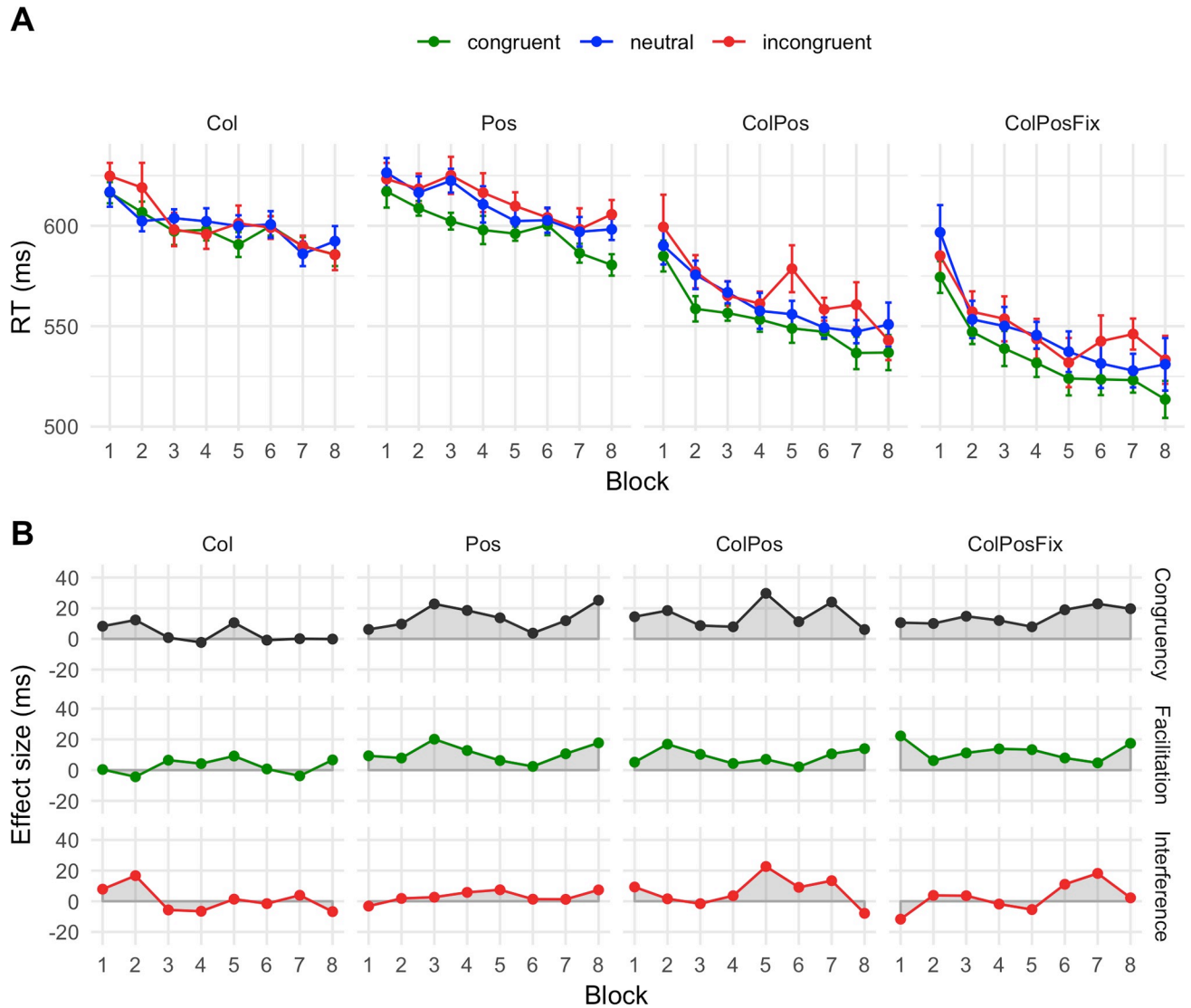


Fig 3. Mean response times (A) and net effects (B) in Experiment 1. Error bars are within-participant standard errors of the mean. Abbreviations: Col = color contingency, Pos = response position contingency, ColPos = both contingencies, ColPosFix = both contingencies plus fixed spatial arrangement of the response cues. Effects: Congruency = $RT_{incongruent} - RT_{congruent}$, Facilitation = $RT_{neutral} - RT_{congruent}$, Interference = $RT_{incongruent} - RT_{neutral}$.

<https://doi.org/10.1371/journal.pone.0218222.g002>

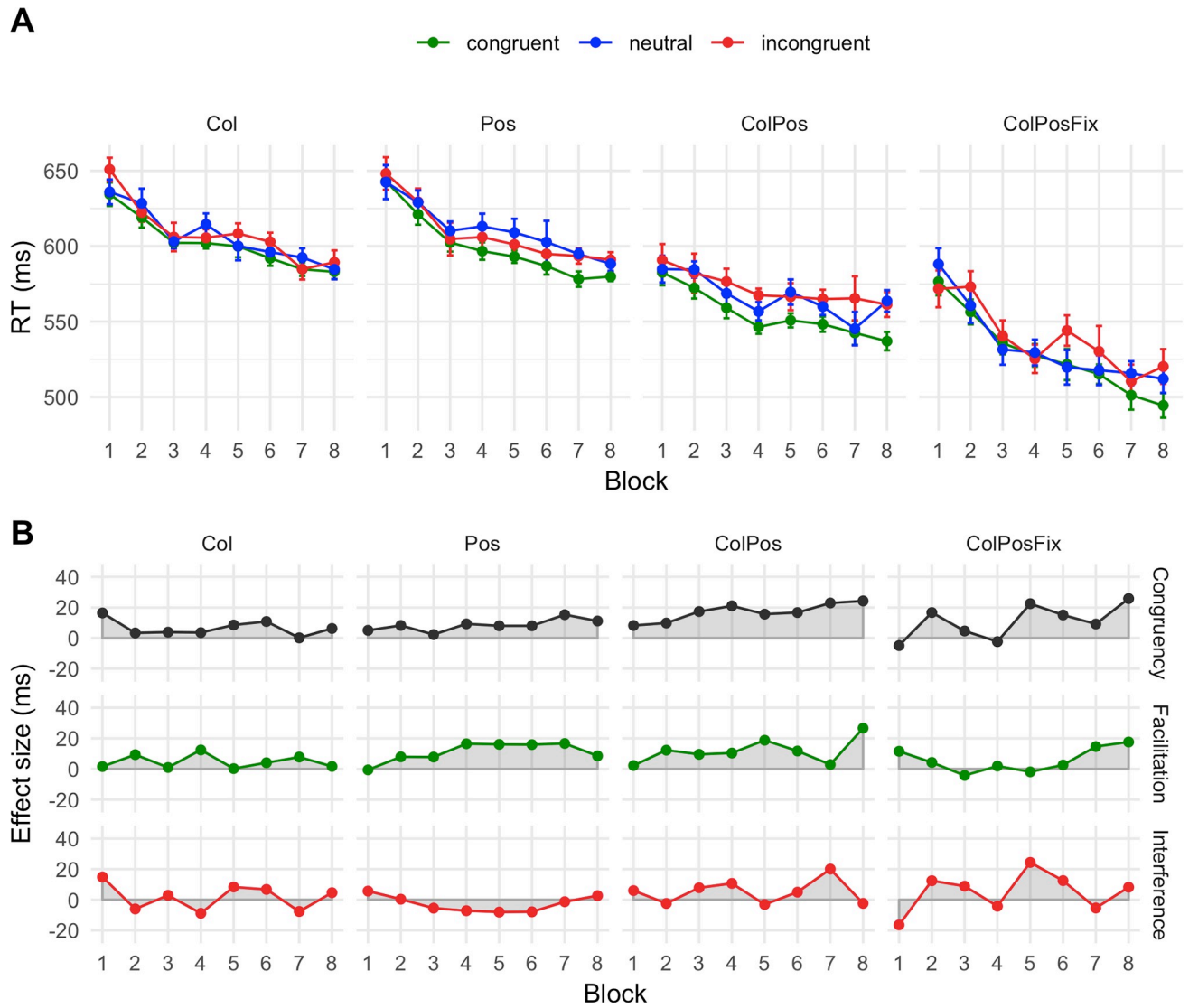


Fig 4. Mean response times (A) and net effects (B) in Experiment 2. Participants were informed about the contingency type before each upcoming block. Error bars and abbreviations as in Fig 3.

<https://doi.org/10.1371/journal.pone.0218222.g003>

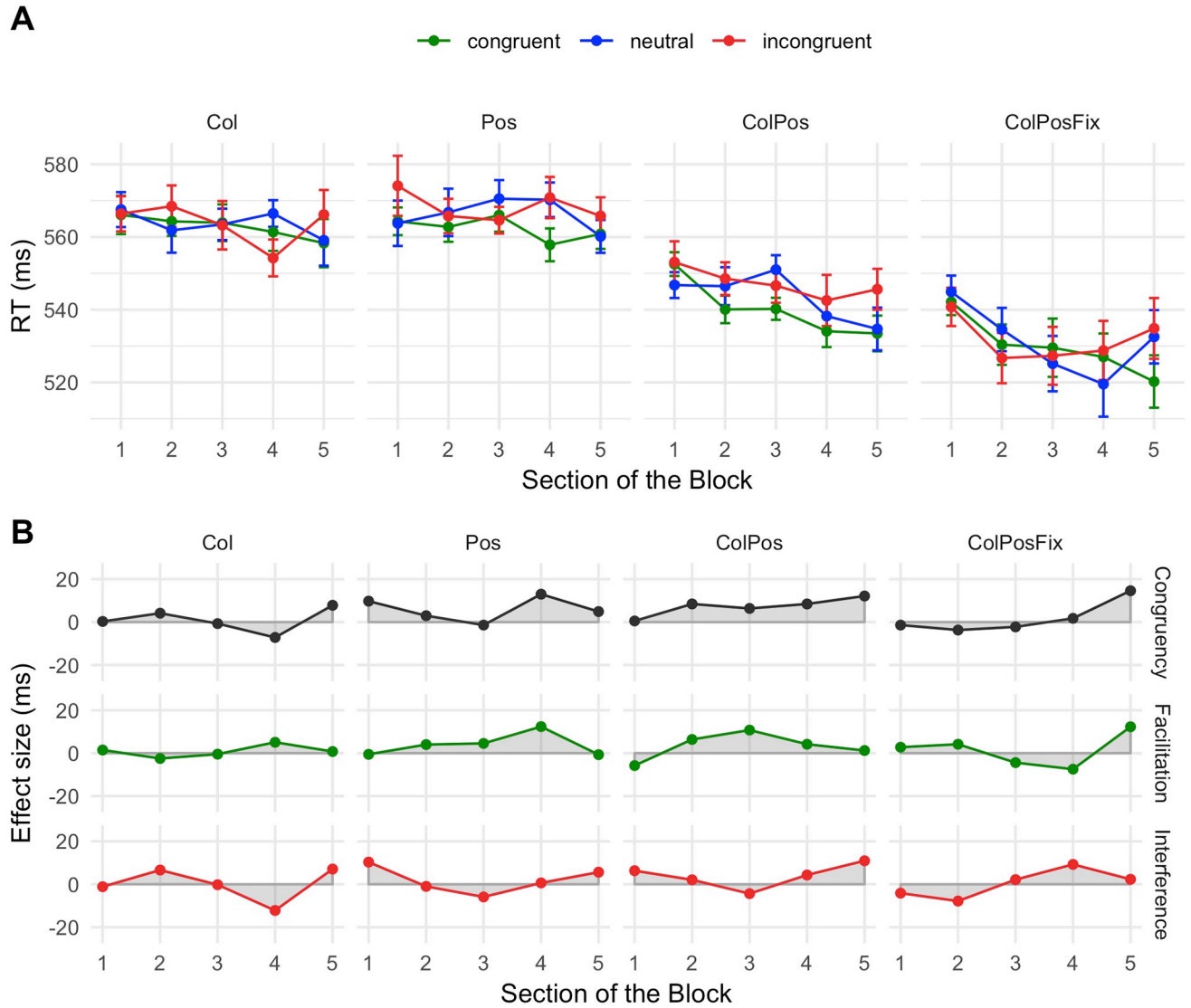


Fig 8. Mean response times (A) and net effects (B) in Experiment 4. Error bars and abbreviations as in Fig 3.

<https://doi.org/10.1371/journal.pone.0218222.g004>

Reference

1. Geukes S, Vorberg D, Zwitserlood P (2019) Disentangling semantic and response learning effects in color-word contingency learning. *PLoS ONE* 14(5): e0212714. <https://doi.org/10.1371/journal.pone.0212714> PMID: 31059506