

RESEARCH ARTICLE

Identification of appropriate reference genes for RT-qPCR analysis in *Juglans regia* L.

Li Zhou^{1,2}, Jianxin Niu^{1,2*}, Shaowen Quan^{1,2}

1 Department of Horticulture, College of Agriculture, Shihezi University, Shihezi, Xinjiang, P.R. China, **2** Xinjiang Production and Construction Corps Key Laboratory of Special Fruits and Vegetables Cultivation Physiology and Germplasm Resources Utilization, Shihezi, Xinjiang, P.R. China

* njx105@163.com



Abstract

Reverse transcription quantitative real-time PCR (RT-qPCR) is a popular adopted technique to detect gene expression, and the selection of appropriate reference genes is crucial for data normalization. In the present study, seven candidate reference genes were screened to evaluate their expression stability in various flower buds, leaf buds, tissues and cultivars of the English walnut (*Juglans regia* L.) based on four algorithms (geNorm, Normfinder, Bestkeeper and RefFinder). The results demonstrated that *TUA*, *EF1* and *TUB* were appropriate reference genes for flower buds at different stages of female flower buds differentiation; *TUB* and *18S rRNA* were best for leaf buds at different stages of female flower buds differentiation; *TUB* and *TUA* were suitable for different cultivars; and *ACT2*, *18S rRNA* and *GAPDH* were useful for different tissues. Moreover, the expression of *ACT* was not stable among different flower buds, leaf buds and cultivars. The stability of reference genes were confirmed through the analysis of the expression of *SPL18* gene. These results will contribute to a reliable normalization of gene expression in *J. regia*.

OPEN ACCESS

Citation: Zhou L, Niu J, Quan S (2018) Identification of appropriate reference genes for RT-qPCR analysis in *Juglans regia* L.. PLoS ONE 13(12): e0209424. <https://doi.org/10.1371/journal.pone.0209424>

Editor: Gayle E. Woloschak, Northwestern University Feinberg School of Medicine, UNITED STATES

Received: March 10, 2018

Accepted: December 5, 2018

Published: December 18, 2018

Copyright: © 2018 Zhou et al. This is an open access article distributed under the terms of the [Creative Commons Attribution License](https://creativecommons.org/licenses/by/4.0/), which permits unrestricted use, distribution, and reproduction in any medium, provided the original author and source are credited.

Data Availability Statement: All relevant data are within the paper and its Supporting Information files.

Funding: The study was supported by the National Science and Technology Specific projects of Xinjiang (No. 201130102-1-4) and the National Natural Science Foundation of China (No. 30560090). The funders had no role in study design, data collection and analysis, decision to publish, or preparation of the manuscript.

Introduction

With high sensitivity, rapidity, specificity and reliability, reverse transcription quantitative real-time PCR (RT-qPCR) is a popular technique applied to detect relative gene expression [1, 2]. Nevertheless, the reliability of the data is influenced by the quantity and quality of the templates, and the efficiency of the reverse transcription reaction and amplification [3, 4]. Consequently, it is very important to assess gene expression levels with a stable reference gene. Numerous genes related to basic metabolism or cellular processes have been applied as reference genes in various fruit trees, including Chinese jujube [5, 6], peach [7, 8], litchi [9], grape [10], citrus [11], apple [12–14], pear [15, 16] and cherry [17]. Only one study has analyzed the reference genes stability for *Juglans sigillata* Dode [18].

The English walnut (*J. regia* L.) has abundant nutrition and commercial value, and is one of the most important nut fruit trees in the world. Flowering is an important stage for nut production. For most walnut trees, there is a long juvenile period of 8 to 10 years before first flowering. However, the *J. regia* cv. Xinxin 2, an early-seeding cultivar, has a short juvenile phase of

Competing interests: All authors are affiliated to Xinjiang Production and Construction Corps Key Laboratory of Special Fruits and Vegetables Cultivation Physiology and Germplasm Resources Utilization. There are no patents, products in development or marketed products to declare. This does not alter our adherence to all the PLOS ONE policies on sharing data and materials.

2 to 3 years, and few studies have explored the molecular mechanism of floral induction. Recently, we used high-throughput sequencing technology to detect the transcriptome profiles of flower buds and leaf buds before, during and after the critical period of female flower bud differentiation. The transcriptome sequence dataset provided abundant information for the selection of appropriate reference genes.

An ideal reference gene should be stably expressed not only in various tissues but also at all developmental stages. Furthermore, the reference gene should not be affected by experimental treatments [19]. However, an increasing number of studies indicated that expression of many classic reference genes varies among different tissues, genotypes and experimental treatments [4]. Hence, it is necessary to screen a suitable reference gene before RT-qPCR analysis.

In the present study, we screened seven candidate reference genes based on the transcriptome dataset of *J. regia* cv. Xinxin 2. Their expression stability among various flower buds, leaf buds, tissues and cultivars was assessed. Furthermore, the expression of one target gene (*SPL18*) was explored to validate the effectiveness of the selected reference genes.

Materials and methods

Plant materials

The plant samples in this study were collected from the southern part of Xinjiang Uyghur Autonomous Region, China. Flower buds and leaf buds were collected from *J. regia* cv. Xinxin 2 at different stages of female flower buds differentiation. Flower buds were collected at the critical period of female flower buds differentiation from the following four cultivars: Xinxin 2, Hetian, Wuhuo and Wen 185. Different tissues (leaves, leaf buds, branches and flower buds) were collected at the critical period of female flower buds differentiation from Xinxin 2. All samples were immediately frozen in liquid N and then stored at -70°C . For flower buds and leaf buds, three buds made a sample. Three samples were used for each period. (For each period, nine buds were used.). For different tissues, three samples were used. Eight periods of flower buds and five periods of leaf buds were considered to analysis the stability of the seven candidate reference genes.

RNA isolation and cDNA synthesis

Total RNA was isolated from the flower buds, leaf buds, leaves and branches using a Plant RNA Extract Kit (Aidlab, Beijing, China). The quality of RNA was detected by NanoDrop 2000 (Thermo Scientific) and 1.1% agarose gel electrophoresis. For each sample, one microgram of total RNA was used to synthesize cDNA using a PrimeScript RT reagent Kit with gDNA Eraser (Takara, Dalian, China).

Selection of candidate reference genes and primer design

Seven candidate reference genes, including actin (*ACT*), actin-related protein 2 (*ACT2*), elongation factor (*EF1*), α -Tubulin (*TUA*), β -Tubulin (*TUB*), glyceraldehyde-3-phosphatedehydrogenase (*GAPDH*), and 18S ribosomal RNA (*18S rRNA*) were selected based on their low variance of gene expression in the transcriptome dataset of *J. regia* cv. Xinxin 2. The primers were designed using Primer Premier 6 [20] and the detailed information were listed in [S1 Table](#).

RT-qPCR and statistical analysis

The RT-qPCR was conducted using a SYBR Green based PCR assay (Toyobo, Japan) on a Bio-Rad CFX96 real time PCR system. Each 10 μL PCR reaction mixture covered cDNA (1 μL),

forward and reverse primer (0.4 μ L), SYBR Green Mix (5 μ L) and ddH₂O (3.2 μ L). The PCR procedure were 94°C for 30 s, followed by 40 cycles of 94°C for 15 s, 60°C for 15 s and 72°C for 30 s. A melting curve was performed to confirm the specificity of primers. Each reaction was carried out three times. In addition, standard curves were generated using a five-fold cDNA dilution series to calculate the amplification efficiency (E) and correction coefficients (R^2) of the candidate reference genes [2].

Quantification cycle (C_q) values were obtained and analyzed using three Microsoft Excel-based softwares, geNorm [21], Norm Finder [22], and BestKeeper [23]. The comprehensive ranking order of the candidate reference genes were obtained through an online-based program: RefFinder (<http://150.216.56.64/referencegene.php?type=reference>), which integrates the analysis of geNorm, Normfinder and Bestkeeper.

Validation of candidate reference gene

To confirm the stability of reference genes, RT-qPCR was performed to detect the expression levels of squamosa promoter-binding-like protein 18 (*SPL18*) using the $2^{-\Delta\Delta C_q}$ method. Three of the most stable genes and the least stable gene were used to normalize the expression levels of *SPL18* in different flower buds and leaf buds at different stages of female flower buds differentiation (five periods were analyzed), different tissues and four cultivars. The primers of *SPL18* were 5' -AGCAGTGCAGCAGGTTCCATTC (forward) and 5' - GTCGTCGGTTGTGTCCATCAAGG (reverse).

Results

Primer specificity and PCR amplification efficiency

The specific primers for seven reference candidates were designed for RT-qPCR. The size of amplicons ranged from 98 to 166 bp. All primer pairs amplified a single PCR product of the expected size (S1 Fig). All the primers demonstrated a single peak melting curves (S2 Fig). The R^2 of seven candidates ranged from 0.947 for *ACT2* to 0.997 for *EF1* and E varied from 97.8% to 111.1% for *TUB* and *ACT2*, respectively (S3 Fig).

Expression profile of the reference genes

The C_q values showed an overview of the expression level of seven candidate reference genes among the tested samples. The C_q values of the seven reference genes ranged from 18.63 (*EF1*) to 28.42 (*TUB*). The mean C_q values of the seven reference genes ranged from 19.34 to 25.58 (Fig 1, S2 Table). A high C_q value suggested a low gene expression level [24]. Among the seven candidate reference genes, *18S rRNA* and *ACT2* demonstrated low expression with high C_q values, whereas *TUA* and *EF1* showed high expression levels with low C_q values. The outliers suggested that no candidate reference genes had constant expression levels among all the tested samples. Therefore, it's necessary to screen appropriate reference genes via statistical methods.

Expression stability of candidate reference genes

geNorm analysis. GeNorm algorithm determines the ranking of candidate reference genes by calculating the expression stability measure (M). The M value of the gene is negatively related to its stability, and 1.5 is set as the threshold of M value [21]. As showed in Fig 2, M-values of all the seven candidate reference genes were below 1.5. The stability of the seven candidate reference genes varied across the tested samples. Among the various flower buds, *TUA* and *EF1* were the most stable genes with a same M-value of 0.23 (Fig 2A). *EF1* and *TUB* were the most stable genes with a same M-value among the different leaf buds (Fig 2B) and the four

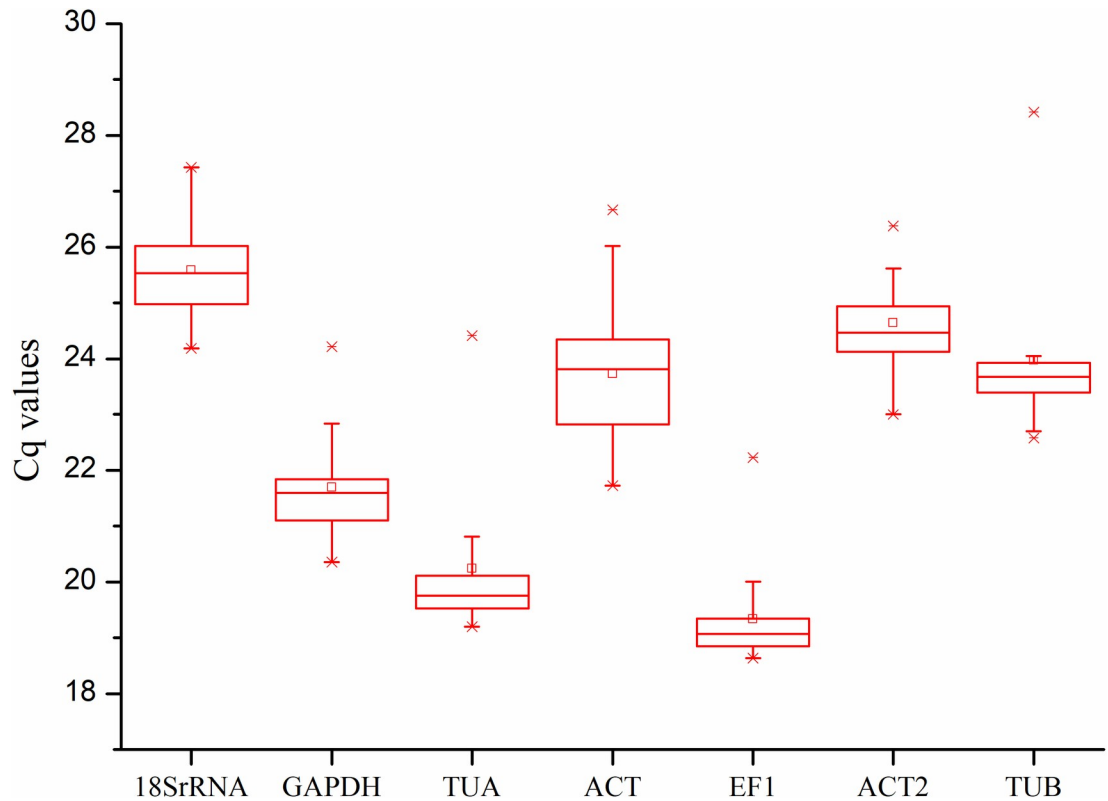


Fig 1. Expression levels (Cq values) of the seven candidate reference genes in all the tested samples. The lower and upper ends of box indicate the 1/4 and 3/4 quartiles. Whiskers indicate the maximum and minimum Cq values. The line in the box indicates the median and the small box indicates the mean Cq value. The star indicates the outlier.

<https://doi.org/10.1371/journal.pone.0209424.g001>

cultivars (Fig 2D). For different tissues, *GAPDH* and *ACT2* were the most stable genes with a same M-value of 0.26 (Fig 2C). When all the samples were analyzed, 18S rRNA and *ACT2* were the most stable genes (Fig 2E). *ACT* was found to be the least stable gene among the various flower buds, leaf buds, different cultivars and all the test samples (Fig 2A, 2B, 2D and 2E).

The geNorm also generated the pairwise variation ($V_{n/n+1}$), which can help to select the optimal number of references. If the value of $V_{n/n+1}$ was less than 0.15, there is no necessary to apply an additional reference gene (Vandesompele *et al.*, 2002). For various flower buds, the value of $V_{2/3}$ was 0.087 (Fig 2F), suggesting that two reference genes, *EF1* and *TUA*, were needed for normalization. For leaf buds at different flowering stages, the variation value was 0.121 at $V_{3/4}$, so three reference genes, *TUB*, *EF1* and *GAPDH*, were required for normalization. The value of $V_{2/3}$ was 0.075 in the cultivars group, suggesting that *EF1* and *TUB* were needed for normalization.

NormFinder analysis. The results of NormFinder analysis were shown in Table 1. For various flower buds, *TUA* (0.085), *TUB* (0.145) and *EF1* (0.193) ranked the most stable genes, which was similar to the results generated from geNorm. Similarly, *ACT* was the least stable gene among the various flower buds, leaf buds, cultivars and all the tested samples calculated by NormFinder, which was consistent with the results of geNorm. For various leaf buds, tissues and cultivars, the most stable genes got from NormFinder were different from the results of geNorm. Specifically, *18S rRNA* (0.155) and *TUB* (0.235) for various leaf buds; *ACT* (0.115) and 18S rRNA (0.199) for different tissues; *GAPDH* (0.097), *TUA* (0.167) and *TUB* (0.206) for different cultivars were ranked the most stable by NormFinder.

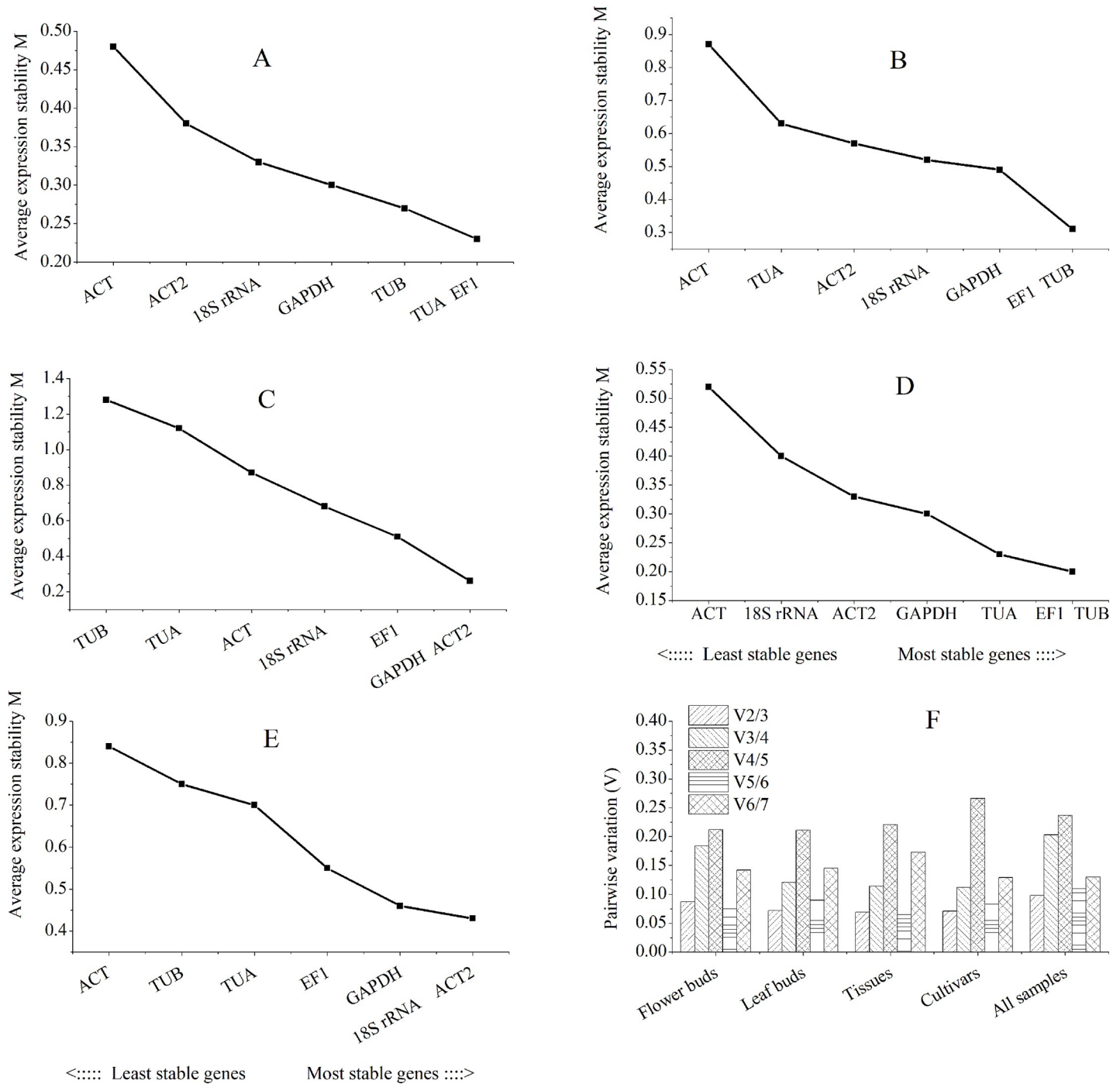


Fig 2. geNorm ranking of the seven candidate reference genes and pairwise variation analysis to select the optimal number of reference genes. A: flower buds, B: leaf buds, C: different tissues, D: four cultivars, E: all samples. F: pairwise variation.

<https://doi.org/10.1371/journal.pone.0209424.g002>

BestKeeper analysis. Bestkeeper was applied to evaluate the stability of candidate references according to the standard deviation (SD) and the coefficient of variation (CV) of Cq values. SD values less than 1 were acceptable. A lower SD and CV (CV ± SD) value indicated a more stable gene. For various flower buds, the values of SD for seven candidate reference

Table 1. The stability of candidate reference genes based on Normfinder analysis.

Rank	Flower buds		Leaf buds		Different tissues		Different cultivars		All samples	
	Gene	Stability value	Gene	Stability value	Gene	Stability value	Gene	Stability value	Gene	Stability value
1	<i>TUA</i>	0.085	<i>18S rRNA</i>	0.155	<i>ACT</i>	0.115	<i>GAPDH</i>	0.097	<i>18S rRNA</i>	0.169
2	<i>TUB</i>	0.145	<i>TUB</i>	0.235	<i>18S rRNA</i>	0.199	<i>TUA</i>	0.167	<i>ACT2</i>	0.290
3	<i>EF1</i>	0.193	<i>ACT2</i>	0.272	<i>ACT2</i>	0.494	<i>TUB</i>	0.206	<i>GAPDH</i>	0.361
4	<i>GAPDH</i>	0.200	<i>GAPDH</i>	0.370	<i>GAPDH</i>	0.607	<i>ACT2</i>	0.221	<i>TUA</i>	0.443
5	<i>18S rRNA</i>	0.211	<i>EF1</i>	0.372	<i>TUA</i>	0.843	<i>EF1</i>	0.245	<i>EF1</i>	0.473
6	<i>ACT2</i>	0.269	<i>TUA</i>	0.428	<i>EF1</i>	0.976	<i>18S rRNA</i>	0.256	<i>TUB</i>	0.491
7	<i>ACT</i>	0.469	<i>ACT</i>	0.975	<i>TUB</i>	1.121	<i>ACT</i>	0.529	<i>ACT</i>	0.611

<https://doi.org/10.1371/journal.pone.0209424.t001>

genes were below 1 (Table 2). *EF1* (CV ± SD = 1.60% ± 0.31) were ranked the best stability, followed by *TUA* (CV ± SD = 1.69% ± 0.33) and *TUB* (CV ± SD = 1.73% ± 0.41). This result was similar with that got from geNorm and NormFinder. However, in other experimental groups, the results of Bestkeeper analysis were different from those got from geNorm and NormFinder. For various leaf buds, *18S rRNA* was the most stable (CV ± SD = 2.89% ± 0.76), followed by *ACT2* (CV ± SD = 3.10% ± 0.79) and *GAPDH* (CV ± SD = 3.60% ± 0.82). All other genes, with SD values bigger than 1, were not acceptable. For different tissues, *EF1* had the lowest CV ± SD values (1.87%±0.36), followed by *ACT2*, *GAPDH* and *18S rRNA*, whereas *ACT*, *TUA* and *TUB* had SD values bigger than 1. For different cultivars, all the genes had SD values less than 1, and *TUB* were ranked the most stable, followed by *TUA* and *EF1*. For all samples, *EF1* was the most stable gene.

Comprehensive ranking of the candidate reference genes by RefFinder. The comprehensive ranking order of the candidate reference genes were obtained through RefFinder, which integrated the methods of geNorm, NormFinder and Bestkeeper. As shown in Table 3, *TUA*, *EF1* and *TUB* were the most three stable genes in flower buds. *18S rRNA* and *TUB* expressed most stably in leaf buds. For different tissues, *ACT2*, *18S rRNA* and *GAPDH* were the most suitable reference genes. For different cultivars, *TUB*, *TUA* and *GAPDH* were identified as the most stable genes. Among all the samples, *18S rRNA*, *ACT2* and *GAPDH* were expressed most stably. The expression of *ACT* was unstable in flower buds, leaf buds and different cultivars. The expression of *TUB* was unstable across different tissues.

Validation of selected reference genes

The expression levels of *SPL18* were assessed in various flower buds, leaf buds, tissues and cultivars to confirm the stability of the selected reference genes. Three of the most stable reference genes and the most unstable gene were applied for data normalization. The expression levels of

Table 2. The stability of candidate reference genes based on Bestkeeper analysis.

Rank	Flower buds			Leaf buds			Different tissues			Different cultivars			All samples		
	Gene	SD	CV (%)	Gene	SD	CV (%)	Gene	SD	CV (%)	Gene	SD	CV (%)	Gene	SD	CV (%)
1	<i>EF1</i>	0.31	1.60	<i>18srRNA</i>	0.76	2.89	<i>EF1</i>	0.36	1.87	<i>TUB</i>	0.11	0.49	<i>EF1</i>	0.55	2.86
2	<i>TUA</i>	0.33	1.69	<i>ACT2</i>	0.79	3.10	<i>ACT2</i>	0.52	2.08	<i>TUA</i>	0.13	0.68	<i>ACT2</i>	0.62	2.53
3	<i>TUB</i>	0.41	1.73	<i>GAPDH</i>	0.82	3.60	<i>GAPDH</i>	0.54	2.45	<i>EF1</i>	0.15	0.80	<i>GAPDH</i>	0.65	3.01
4	<i>ACT2</i>	0.43	1.78	<i>TUB</i>	1.22	5.01	<i>18S rRNA</i>	0.88	3.40	<i>GAPDH</i>	0.20	0.94	<i>18srRNA</i>	0.68	2.66
5	<i>GAPDH</i>	0.49	2.33	<i>EF1</i>	1.23	6.15	<i>ACT</i>	1.07	4.49	<i>ACT2</i>	0.23	0.93	<i>TUB</i>	0.82	3.41
6	<i>18S rRNA</i>	0.54	2.14	<i>ACT</i>	1.26	5.26	<i>TUA</i>	1.62	7.63	<i>18S rRNA</i>	0.37	1.45	<i>TUA</i>	0.87	4.30
7	<i>ACT</i>	0.65	2.76	<i>TUA</i>	1.28	6.16	<i>TUB</i>	1.82	7.34	<i>ACT</i>	0.62	2.65	<i>ACT</i>	0.88	3.69

<https://doi.org/10.1371/journal.pone.0209424.t002>

Table 3. Expression stability ranking of the candidate reference genes based on RefFinder.

Method	1	2	3	4	5	6	7
Ranking Order In Flower Buds (Better—Good—Average)							
BestKeeper	<i>EF1</i>	<i>TUA</i>	<i>TUB</i>	<i>ACT2</i>	<i>GAPDH</i>	<i>18S rRNA</i>	<i>ACT</i>
Normfinder	<i>TUA</i>	<i>TUB</i>	<i>EF1</i>	<i>GAPDH</i>	<i>18S rRNA</i>	<i>ACT2</i>	<i>ACT</i>
Genorm	<i>TUA EF1</i>		<i>TUB</i>	<i>GAPDH</i>	<i>18S rRNA</i>	<i>ACT2</i>	<i>ACT</i>
RefFinder	<i>TUA</i>	<i>EF1</i>	<i>TUB</i>	<i>GAPDH</i>	<i>18S rRNA</i>	<i>ACT2</i>	<i>ACT</i>
Ranking Order In Leaf Buds (Better—Good—Average)							
BestKeeper	<i>18S rRNA</i>	<i>ACT2</i>	<i>GAPDH</i>	<i>TUB</i>	<i>EF1</i>	<i>ACT</i>	<i>TUA</i>
Normfinder	<i>18S rRNA</i>	<i>TUB</i>	<i>ACT2</i>	<i>GAPDH</i>	<i>EF1</i>	<i>TUA</i>	<i>ACT</i>
Genorm	<i>EF1 TUB</i>		<i>GAPDH</i>	<i>18S rRNA</i>	<i>ACT2</i>	<i>TUA</i>	<i>ACT</i>
RefFinder	<i>18S rRNA</i>	<i>TUB</i>	<i>ACT2</i>	<i>EF1</i>	<i>GAPDH</i>	<i>TUA</i>	<i>ACT</i>
Ranking Order In Differ Tissues (Better—Good—Average)							
BestKeeper	<i>EF1</i>	<i>ACT2</i>	<i>GAPDH</i>	<i>18S rRNA</i>	<i>ACT</i>	<i>TUA</i>	<i>TUB</i>
Normfinder	<i>ACT</i>	<i>18S rRNA</i>	<i>ACT2</i>	<i>GAPDH</i>	<i>TUA</i>	<i>EF1</i>	<i>TUB</i>
Genorm	<i>GAPDH ACT2</i>		<i>EF1</i>	<i>18S rRNA</i>	<i>ACT</i>	<i>TUA</i>	<i>TUB</i>
RefFinder	<i>ACT2</i>	<i>18S rRNA</i>	<i>GAPDH</i>	<i>ACT</i>	<i>EF1</i>	<i>TUA</i>	<i>TUB</i>
Ranking Order Indifferent Cultivars (Better—Good—Average)							
BestKeeper	<i>TUB</i>	<i>TUA</i>	<i>EF1</i>	<i>GAPDH</i>	<i>ACT2</i>	<i>18S rRNA</i>	<i>ACT</i>
Normfinder	<i>GAPDH</i>	<i>TUA</i>	<i>TUB</i>	<i>ACT2</i>	<i>EF1</i>	<i>18S rRNA</i>	<i>ACT</i>
Genorm	<i>EF1 TUB</i>		<i>TUA</i>	<i>GAPDH</i>	<i>ACT2</i>	<i>18S rRNA</i>	<i>ACT</i>
RefFinder	<i>TUB</i>	<i>TUA</i>	<i>GAPDH</i>	<i>EF1</i>	<i>ACT2</i>	<i>18S rRNA</i>	<i>ACT</i>
Ranking Order In All Samples (Better—Good—Average)							
BestKeeper	<i>EF1</i>	<i>ACT2</i>	<i>GAPDH</i>	<i>18S rRNA</i>	<i>TUB</i>	<i>TUA</i>	<i>ACT</i>
Normfinder	<i>18S rRNA</i>	<i>ACT2</i>	<i>GAPDH</i>	<i>TUA</i>	<i>EF1</i>	<i>TUB</i>	<i>ACT</i>
Genorm	<i>18S rRNA ACT2</i>		<i>GAPDH</i>	<i>EF1</i>	<i>TUA</i>	<i>TUB</i>	<i>ACT</i>
RefFinder	<i>18S rRNA</i>	<i>ACT2</i>	<i>GAPDH</i>	<i>EF1</i>	<i>TUA</i>	<i>TUB</i>	<i>ACT</i>

<https://doi.org/10.1371/journal.pone.0209424.t003>

SPL18 were similar in different flower buds under the normalization of *TUA*, *EF1* and *TUB* (Fig 3A). Similar results were obtained when *18S rRNA*, *TUB* and *EF1* were used as reference genes. However, when the least stable gene (*ACT*) was used as the reference gene, the expression of *SPL18* was considerably biased at Period 5 (Fig 3B). Analysis of four cultivars suggested that the expression levels of *SPL18* were consistent when *TUB* and *TUA* were used for normalization, while there was a slightly difference when *EF1* was used as reference gene. However, there was a significant difference when *ACT* was applied for normalization (Fig 3C). For different tissues, the expression trends of *SPL18* were consistent when *ACT2*, *18S rRNA* and *GAPDH* were used for normalization. *TUB* was not suitable for normalization among different tissues (Fig 3D).

Discussion

Different normalization approaches can change the calculation of P-values and fold changes of a large number of genes depending on the normalization method applied [25]. RT-qPCR is considered as the most appropriate method for gene expression due to its high sensitivity, rapidity, specificity and reliability [1, 2]. An ideal reference gene is assumed to have constant expression levels among different samples and under different experimental conditions. However, there is no universal reference gene. The expression of putative reference genes varies across different tissues, genotypes and various experimental conditions [26]. The expression levels of target genes were evaluated according to the expression of reference genes, however,

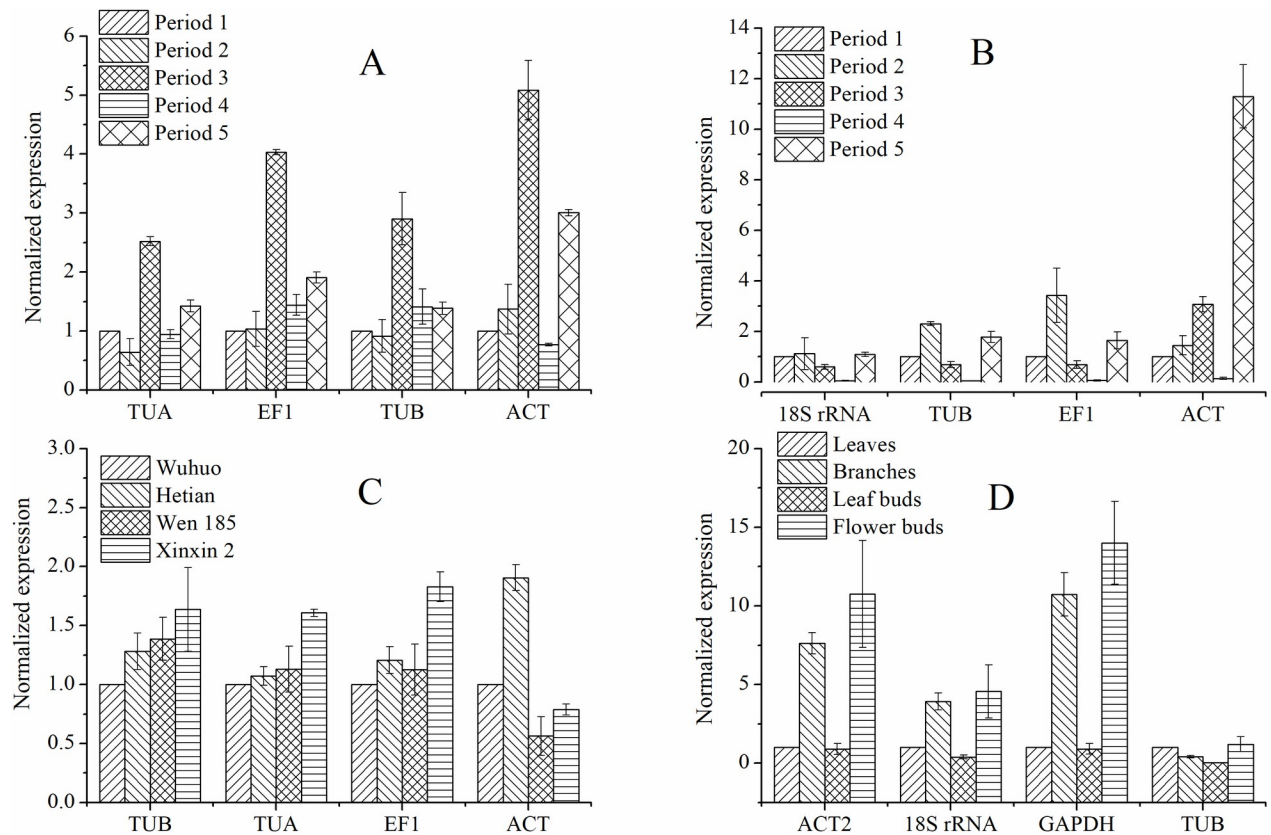


Fig 3. Relative expression of *SPL18* based on candidate reference genes. A: flower buds. B: leaf buds. C: different cultivars. D: different tissues. The relative expression levels were depicted as mean+ SD (standard deviation) calculated from three technical replicates.

<https://doi.org/10.1371/journal.pone.0209424.g003>

an unstable reference gene can result in inaccurate evaluation of target gene expression. For example, the expression of *FaWRKY1* in roots of tall fescue under salinity and drought stress peaked at 3 h when the most stable reference genes (*TUB* and *SAND*) were used. However, the expression of *FaWRKY1* exhibited fluctuations and failed to achieve a consistent pattern when the least stable gene (*EF1 α*) was used [27]. As reported in the previous study, the expression patterns of miR159 for leaf, stem and root were consistent when the most stable reference genes, *EF-1 α* , *Ubiquitin* and *GAPDH*, were used for data normalization. However, when the least stably expressed reference genes, *Actin* and *18S rRNA*, were used for data normalization, the expression of miR159 was considerably biased. This result indicated that the least stable reference genes, *Actin* and *18S rRNA*, failed to standardize the expression data effectively [28]. In this study, the expression level and stability of seven candidate reference genes were evaluated by RT-qPCR using geNorm, Normfinder and Bestkeeper. As a result, no single reference gene was consistently expressed across all the samples tested due to the different statistical algorithms of the programs [29]. For example, *EF1*, *TUA* and *TUB* were identified as the most stable genes in various flower buds and different cultivars by geNorm, Normfinder and Bestkeeper. Similar to our results, *EF1* and *TUB* were steadily expressed during flower development in other plants [30, 31]. However, *EF1* and *TUA* in various leaf buds; *TUA*, *EF1* and *TUB* in different tissues were not stable by Normfinder (Table 2). *TUB* and *TUA* were also identified to be unstable reference genes in peach [7]. Similarly, *EF1* was not stably expressed in grapevine [10]. A previous study indicated that β -*ACT2* was not an appropriate reference gene in *Juglans sigillata* [18]. In the present study, *ACT* was also identified as the least stable in various

flower buds and leaf buds and different cultivars by the three programs (Fig 2, Tables 1 and 2), whereas it was ranked first in different tissues by Normfinder (Table 2). These results may be due to different species and tissues that were assessed as reliable reference genes that were highly specific to an individual experimental condition. Furthermore, we applied RefFinder to get a comprehensive ranking order of the seven candidate reference genes based on the geometric mean of every reference gene evaluated through delta Cq, geNorm, Normfinder and Bestkeeper [19, 32, 33]. To confirm the stability of selected reference genes, the expression levels of *SPL18* in different flower buds, leaf buds, tissues and four cultivars were detected. The results revealed that *SPL18* were consistently expressed under the normalization of the most stable reference genes (Fig 3).

Conclusion

In conclusion, the stability of seven candidate reference genes for RT-qPCR data normalization was evaluated by geNorm, Normfinder and Bestkeeper, and the comprehensive ranking orders were obtained by RefFinder. The results demonstrated that *TUA*, *EF1* and *TUB* for flower buds at different stages of female flower buds differentiation, *18S rRNA* and *TUB* for leaf buds at different stages of female flower buds differentiation, *TUB* and *TUA* for different cultivars, *ACT2*, *18S rRNA* and *GAPDH* for different tissues were considered to be the suitable reference genes. Moreover, *ACT* was not a suitable reference gene for different flower buds, leaf buds and cultivars. *TUB* expression was unstable among different tissues. Additionally, the expression level of *SPL18* was analyzed to validate the stability of selected reference genes. Our results will contribute to a reliable normalization of RT-qPCR data for gene expression in *J. regia*.

Supporting information

S1 Fig. Agarose gel (1.2%) electrophoresis shown amplification of seven candidate reference genes with a single PCR product of expected size.

(TIF)

S2 Fig. Melting curves of seven candidate reference genes in RT-qPCR.

(TIF)

S3 Fig. Standard curves of seven candidate reference genes in RT-qPCR.

(TIF)

S1 Table. Primer sequences and amplification characteristics of seven candidate reference genes for RT-qPCR analysis.

(XLSX)

S2 Table. The Cq values of seven candidate reference genes.

(DOCX)

Acknowledgments

The authors would like to thank Jeff Gale (Shihezi University) for the editorial assistance with the English.

Author Contributions

Conceptualization: Li Zhou, Jianxin Niu, Shaowen Quan.

Data curation: Li Zhou, Jianxin Niu, Shaowen Quan.

Formal analysis: Li Zhou.

Funding acquisition: Jianxin Niu.

Methodology: Li Zhou, Shaowen Quan.

Project administration: Jianxin Niu.

Resources: Jianxin Niu.

Software: Li Zhou.

Supervision: Jianxin Niu.

Validation: Jianxin Niu.

Writing – original draft: Li Zhou, Jianxin Niu, Shaowen Quan.

Writing – review & editing: Li Zhou, Jianxin Niu, Shaowen Quan.

References

1. Gachon C, Mingam A, Charrier B. Real-time PCR: what relevance to plant studies? *Journal of Experimental Botany*. 2004; 55(402):1445–54. <https://doi.org/10.1093/jxb/erh181> PMID: 15208338
2. Bustin SA, Benes V, Garson JA, Hellemans J, Huggett J, Kubista M, et al. The MIQE Guidelines: Minimum Information for Publication of Quantitative Real-Time PCR Experiments. *Clinical Chemistry*. 2009; 55(4):611–22. <https://doi.org/10.1373/clinchem.2008.112797> PMID: 19246619
3. Nolan T, Hands RE, Bustin SA. Quantification of mRNA using real-time RT-PCR. *Nature Protocols*. 2006; 1(3):1559–82. <https://doi.org/10.1038/nprot.2006.236> PMID: 17406449
4. Bustin SA, Benes V, Nolan T, Pfaffl MW. Quantitative real-time RT-PCR—a perspective. *Journal of Molecular Endocrinology*. 2005; 34(3):597–601. <https://doi.org/10.1677/jme.1.01755> PMID: 15956331
5. Sun HF, Meng YP, Cui GM, Cao QF, Li J, Liang AH. Selection of housekeeping genes for gene expression studies on the development of fruit bearing shoots in Chinese jujube (*Ziziphus jujube* Mill.). *Molecular Biology Reports*. 2008; 36(8):2183–90. <https://doi.org/10.1007/s11033-008-9433-y> PMID: 19109762
6. Zhang C, Huang J, Li X. Identification of appropriate reference genes for RT-qPCR analysis in *Ziziphus jujuba* Mill. *Scientia Horticulturae*. 2015; 197:166–9.
7. Tong ZG, Gao ZH, Wang F, Zhou J, Zhang Z. Selection of reliable reference genes for gene expression studies in peach using real-time PCR. *BMC Molecular Biology*. 2009; 10(1):71.
8. Kou X, Zhang L, Yang S, Li G, Ye J. Selection and validation of reference genes for quantitative RT-PCR analysis in peach fruit under different experimental conditions. *Scientia Horticulturae*. 2017; 225:195–203.
9. Zhong H-Y, Chen J-W, Li C-Q, Chen L, Wu J-Y, Chen J-Y, et al. Selection of reliable reference genes for expression studies by reverse transcription quantitative real-time PCR in litchi under different experimental conditions. *Plant Cell Reports*. 2011; 30(4):641–53. <https://doi.org/10.1007/s00299-010-0992-8> PMID: 21301853
10. Selim M, Legay S, Berkelmann-Löhnertz B, Langen G, Kogel KH, Evers D. Identification of suitable reference genes for real-time RT-PCR normalization in the grapevine-downy mildew pathosystem. *Plant Cell Reports*. 2011; 31(1):205–16. <https://doi.org/10.1007/s00299-011-1156-1> PMID: 22006104
11. Kou SJ, Wu XM, Liu Z, Liu YL, Xu Q, Guo WW. Selection and validation of suitable reference genes for miRNA expression normalization by quantitative RT-PCR in citrus somatic embryogenic and adult tissues. *Plant Cell Reports*. 2012; 31(12):2151–63. <https://doi.org/10.1007/s00299-012-1325-x> PMID: 22865195
12. Gadiou S, Kundu JK. Evaluation of Reference Genes for the Relative Quantification of Apple stem grooving virus and Apple mosaic virus in Apple Trees. *Indian Journal of Virology*. 2012; 23(1):39–41. <https://doi.org/10.1007/s13337-012-0065-4> PMID: 23730001
13. Perini P, Pasquali G, Margis-Pinheiro M, de Oliveira PRD, Revers LF. Reference genes for transcriptional analysis of flowering and fruit ripening stages in apple (*Malus × domestica* Borkh.). *Molecular Breeding*. 2014; 34(3):829–42.
14. Huang Y, Zhou Z, Cong P, Tian Y, Zhu Y. Using RNA-seq data to select reference genes for normalizing gene expression in apple roots. *PLoS one*. 2017; 12(9):e0185288. <https://doi.org/10.1371/journal.pone.0185288> PMID: 28934340

15. Xu YY, Li H, Li XG, Lin J, Wang ZH, Yang QS, et al. Systematic selection and validation of appropriate reference genes for gene expression studies by quantitative real-time PCR in pear. *Acta Physiologiae Plantarum*. 2015;37(2).
16. Silver N, Best S, Jiang J, SL. T. Selection of housekeeping genes for gene expression studies in human reticulocytes using real-time PCR. *BMC molecular biology* 7:33. 2006. <https://doi.org/10.1186/1471-2199-7-33> PMID: 17026756
17. Ye X, Zhang F, Tao Y, Song S, Fang J. Reference gene selection for quantitative real-time PCR normalization in different cherry genotypes, developmental stages and organs. *Scientia Horticulturae*. 2015; 181:182–8.
18. Li X, Pan XJ, Zhang WE, Zhang R, Chen J. Stability evaluation of reference genes for quantitative real-time PCR analysis in walnut (*Juglans* spp.). *Plant Physiology Journal*. 2017; 53(9):1795–1802.
19. Niu K, Shi Y, Ma H. Selection of Candidate Reference Genes for Gene Expression Analysis in Kentucky Bluegrass (*Poa pratensis* L.) under Abiotic Stress. *Frontiers in Plant Science*. 2017; 8.
20. Udvardi MK, Czechowski T, Scheible WR. Eleven Golden Rules of Quantitative RT-PCR. *The Plant Cell Online*. 2008; 20(7):1736–7.
21. Vandesompele J, De Preter K, Pattyn F, Poppe B, Van Roy N, De Paepe A, et al. Accurate normalization of real-time quantitative RT-PCR data by geometric averaging of multiple internal control genes. *Genome Biol*. 2002; 3, research0034. <https://doi.org/10.1186/gb-2002-3-7-research0034>
22. Andersen CL, Jensen JL, Ørntoft TF. Normalization of real-time quantitative reverse transcription-PCR data: a model-based variance estimation approach to identify genes suited for normalization, applied to bladder and colon cancer data sets. *Cancer Res* 2004; 64, 5245–5250. <https://doi.org/10.1158/0008-5472.CAN-04-0496> PMID: 15289330
23. Pfaffl MW, Tichopad A, Prgomet C, Neuvians TP. Determination of stable housekeeping genes, differentially regulated target genes and sample integrity, Best Keeper—Excel—based tool using pair—wise correlations. *Biotechnol Lett*. 2004; 26, 509–515. <https://doi.org/10.1023/B:BILE.000019559.84305.47> PMID: 15127793
24. Li MY, Wang F, Jiang Q, Wang GL, Tian C, Xiong AS. Validation and Comparison of Reference Genes for qPCR Normalization of Celery (*Apium graveolens*) at Different Development Stages. *Frontiers in Plant Science*. 2016; 7.
25. Fundel K, Haag J, Gebhard PM, Zimmer R, Aigner T. Normalization strategies for mRNA expression data in cartilage research. *Osteoarthritis & Cartilage*. 2008; 16(8):947–55.
26. Kong Q, Yuan J, Niu P, Xie J, Jiang W, Huang Y, et al. Screening Suitable Reference Genes for Normalization in Reverse Transcription Quantitative Real-Time PCR Analysis in Melon. *PloS one*. 2014; 9(1): e87197. <https://doi.org/10.1371/journal.pone.0087197> PMID: 24475250
27. Yang Z, Chen Y, Hu B, Tan Z, Huang B. Identification and validation of reference genes for quantification of target gene expression with quantitative real-time PCR for tall fescue under four abiotic stresses. *PloS one*. 2015; 10(3):e0119569. <https://doi.org/10.1371/journal.pone.0119569> PMID: 25786207. Pubmed Central PMCID: PMC4364999. Epub 2015/03/19.
28. Liang C, Hao J, Meng Y, Luo L, Li J. Identifying optimal reference genes for the normalization of microRNA expression in cucumber under viral stress. *PLoS One*. 2018; 13(3):e0194436. <https://doi.org/10.1371/journal.pone.0194436> PMID: 29543906. Pubmed Central PMCID: PMC5854380. Epub 2018/03/16.
29. Niu XP, Qi JM, Zhang GY, Xu JT, Tao AF, Fang PP, et al. Selection of reliable reference genes for quantitative real-time PCR gene expression analysis in Jute (*Corchorus capsularis*) under stress treatments. *Frontiers in Plant Science*. 2015; 6:848. <https://doi.org/10.3389/fpls.2015.00848> PMID: 26528312
30. Li J, Han J, Hu Y, Yang J. Selection of Reference Genes for Quantitative Real-Time PCR during Flower Development in Tree Peony (*Paeonia suffruticosa* Andr.). *Frontiers in Plant Science*. 2016; 7.
31. Karupaiya P, Yan XX, Liao W, Wu J, Chen F, Tang L. Identification and validation of superior reference gene for gene expression normalization via RT-qPCR in staminate and pistillate flowers of *Jatropha curcas*—A biodiesel plant. *PloS one*. 2017; 12(2):e0172460. <https://doi.org/10.1371/journal.pone.0172460> PMID: 28234941. Pubmed Central PMCID: 5325260.
32. Xiao X, Ma J, Wang J, Wu X, Li P, Yao Y. Validation of suitable reference genes for gene expression analysis in the halophyte *Salicornia europaea* by real-time quantitative PCR. *Frontiers in Plant Science*. 2015; 5.
33. Ma R, Xu S, Zhao Y, Xia B, Wang R. Selection and Validation of Appropriate Reference Genes for Quantitative Real-Time PCR Analysis of Gene Expression in *Lycoris aurea*. *Frontiers in Plant Science*. 2016; 7.