



RESEARCH ARTICLE

The importance of large-diameter trees in the wet tropical rainforests of Australia

Matt Bradford ^{*}, Helen T. Murphy 

CSIRO Land and Water, Atherton, Queensland, Australia

 These authors contributed equally to this work.^{*} matt.bradford@csiro.au

Abstract

Large trees are keystone structures in many terrestrial ecosystems. They contribute disproportionately to reproduction, recruitment and succession, and influence the structure, dynamics and diversity of forests. Recently, researchers have become concerned about evidence showing rapid declines in large, old trees in a range of ecosystems across the globe. We used ≥ 10 cm diameter at breast height (DBH) stem inventory data from 20, 0.5 ha forest plots spanning the wet tropical rainforest of Queensland, Australia to examine the contribution of large-diameter trees to above ground biomass (AGB), richness, dominance, mortality and recruitment. We show consistencies with tropical rainforest globally in that large-diameter trees (≥ 70 cm DBH) contribute much of the biomass (33%) from few trees (2.4% of stems ≥ 10 cm DBH) with the density of the largest trees explaining much of the variation (62%) in AGB across plots. Measurement of AGB in the largest 5% of trees allows plot biomass to be predicted with $\sim 85\%$ precision. In contrast to rainforest in Africa and America, we show that a high proportion of tree species are capable of reaching a large-diameter in Australian wet tropical rainforest resulting in weak biomass hyperdominance ($\sim 10\%$ of species account for 50% of the biomass) leading to high potential resilience to regional disturbances and global environmental change. We show that the high AGB in Australian tropical forests is driven primarily by the high density of large trees coupled with contributions from high densities of medium size trees. Australian wet tropical rainforests are well positioned to maintain the current densities of large-diameter trees and high AGB into the future due to the species richness of large trees and a high density of replacement smaller trees.

OPEN ACCESS

Citation: Bradford M, Murphy HT (2019) The importance of large-diameter trees in the wet tropical rainforests of Australia. PLoS ONE 14(5): e0208377. <https://doi.org/10.1371/journal.pone.0208377>

Editor: RunGuo Zang, Chinese Academy of Forestry, CHINA

Received: November 12, 2018

Accepted: March 20, 2019

Published: May 1, 2019

Copyright: © 2019 Bradford, Murphy. This is an open access article distributed under the terms of the [Creative Commons Attribution License](https://creativecommons.org/licenses/by/4.0/), which permits unrestricted use, distribution, and reproduction in any medium, provided the original author and source are credited.

Data Availability Statement: All relevant data are within the manuscript, Supporting Information files, and on Figshare: <http://dx.doi.org/10.6084/m9.figshare.c.3307029>.

Funding: This research was funded internally by CSIRO until 2012. From 2012 to 2016 funding was supplied by the Long-Term Ecological Research Network, LTERN of Australia's Terrestrial Ecosystems Research Network (www.tern.org.au). The funders had no role in study design, data collection and analysis, decision to publish, or preparation of the manuscript.

Introduction

Large trees are keystone structures in many terrestrial ecosystems including urban areas and agricultural systems [1]. They play a critical ecological role, storing large quantities of carbon, dominating canopies, providing food, shelter, habitat, and nesting cavities, and modulating microclimates and hydrological processes [2–5]. In forest ecosystems, large trees also contribute disproportionately to reproduction, recruitment and succession, and influence the structure, dynamics, and diversity of forests [6, 7]. Recently, researchers have become concerned about evidence showing rapid declines in large, old trees in a range of ecosystems across the

Competing interests: The authors have declared that no competing interests exist.

globe [8]. Several reasons for this decline have been suggested including higher mortality rates in response to drought [9, 10] and cyclones [11], and the effects of fragmentation [12], logging, land clearing and agricultural intensification [2, 13].

Tropical forests make an important contribution to the global carbon cycle and the above-ground carbon balance of these forests is largely governed by the growth and mortality of individual trees [14]. Large trees in tropical forests have been shown to be particularly vulnerable to the effects of fragmentation and lagged-mortality arising from damage sustained during logging activities [12, 15]. However, in tropical forests not subject to significant human-disturbance, evidence for decline in large trees is limited and long-term datasets are rare. Several authors have noted overall increases in mortality in trees across tropical forest plots in America and Asia though large trees have not been reported to be disproportionately affected [16]. Over 8.5 years, the mortality rate of trees >40 m in height in lowland American rainforest was less than half the landscape-scale average for all canopy trees [5]. These authors suggest low mortality rates may be attributed to species-specific traits such as high wood density or delayed reproduction that increases survival through all life stages, increasing the probability of attaining tall heights. Alternatively (or in concert), low mortality in tall trees may be due to ecological advantages such as escape from physical damage from branch falls of lower stature trees or greater light interception which increases carbon gain [5]. It has been suggested [8] that elevated plant-growth rates in tropical forests, possibly resulting from rising atmospheric CO₂, might result in larger numbers of large trees, particularly where other human disturbances are limited.

Large trees store large quantities of carbon and have been shown to drive variation in biomass in tropical forests across both the Neo- and Paleotropics [4, 17, 18]. Large trees (≥ 70 cm diameter at breast height (DBH) stored, on average, 25.1, 39.1 and 44.5% of above ground biomass (AGB) in South America, Southeast Asia and Africa, respectively, but represented only 1.5, 2.4 and 3.8% of trees >10 cm DBH [4]. Large trees also accumulate carbon much faster than smaller trees [19]. Large trees have been recently described as being ‘biomass hyperdominant’, that is, the functions of storing and producing carbon are concentrated in a small number of tree species [20]. For example, in tropical forest plot datasets from the Amazon and Africa, just ~1% [20] and 1.5% of tree species [17] were responsible for 50% of carbon storage and productivity. Understanding the dynamics of these large trees, and their response to changing environmental conditions, is clearly important for predicting the long-term functioning of tropical ecosystems as well as carbon storage and cycling.

We have monitored growth, recruitment and mortality of stems (≥ 10 cm DBH) in 20, 0.5 ha plots in the wet tropical rainforest of Australia for nearly 5 decades [21]. Here, we assess the contribution of large trees to carbon storage on our plots and examine changes in mortality and recruitment. We also discuss the role of large trees in the high biomass estimates reported in Australian wet tropical rainforests [22]. We compare our results with those for tropical forests globally, highlighting convergent and divergent patterns. We demonstrate, 1) that large-diameter trees are important in driving high biomass in Australian wet tropical rainforests, 2) broad consistencies with other tropical rainforest globally confirming the significant contribution of large-diameter trees to the carbon cycle, and 3) some divergence from other tropical rainforest globally, notably high species richness of large-diameter trees resulting in low biomass hyperdominance by tree species.

Materials and methods

This work was carried out under various permits issued by the Queensland Department of Environment and Science.

Study sites

The 20 CSIRO (0.5 ha [100 x 50 m]) permanent study plots are situated in north-east Queensland, Australia, between 21.5°S, 149°E and 12.5°S, 143°E. The region is topographically diverse, and our dataset spans much of the geographical and environmental variation. The climate is tropical with mean annual rainfall ranging from 1200 mm to over 8000 mm on the higher coastal ranges. Seventeen of the plots are located within the Wet Tropics bioregion which consists of narrow coastal plains flanked by rugged mountains (to 1622 m) with extensive upland areas gradually sloping to the west. While covering only 0.24% of the Australian continent, the Wet Tropics region contains high levels of diversity and endemism of flora and fauna [23]. The plots were established between 1971 and 1980 and have been resurveyed every 2–15 years (average 2.6 years) through to 2016. Plots were opportunistically located in areas proceeding logging and were thereafter protected from logging. The region is regularly disturbed by tropical cyclones and is periodically subjected to drought conditions [22]. For a full description of the methodology and access to the data see [21]. At each census all stems ≥ 10 cm diameter were measured at DBH and mortality of stems ≥ 10 cm was also recorded. Each individual was identified to species.

Defining large-diameter trees

For moist forests in the Amazon with AGB of 85–400 Mg/ha, trees ≥ 70 cm diameter were identified as being important components of AGB [24]. Studies since have also defined large trees as ≥ 70 cm DBH [4, 18, 25], however others have used a definition that is specific to the particular study or forest type (e.g. > 100 cm [26], > 80 cm [27], 60–90 or > 90 cm [15], and > 60 cm [3]). In this study we define a large tree as being ≥ 70 cm DBH to allow for relevant pan-tropical comparisons.

Above ground biomass estimates

Above ground biomass estimations are most accurate when they incorporate DBH, wood density and tree height [28] and we consider equation 2 described by Chave et al. [29] to be the most appropriate for AGB estimations in our forests. Unfortunately, height estimates for our plots were only collected at establishment and in 1998. Therefore, we assessed two methods of deriving height from DBH; 1) a pantropical equation that assumes a relationship between environmental stress and tree height [29], and 2) an Australian moist forest equation developed from height diameter relationships [26]. We compared these derived heights with our 1998 height data and heights collected from 22,694 trees at the Robson Creek 25 ha rainforest plot [30] also located within the Wet Tropics Bioregion. The first equation considerably underestimated measured height, and the second equation overestimated but approximated measured height (S1 and S2 Figs). We used the derived heights from both sources in equation 2 in [29] and compared the resulting AGB estimations to those using the actual measured heights from the 1998 and Robson Creek 25 ha data (S3 Fig). Estimations from both sources were less accurate than simply using an equation for tropical moist forests without height [28]. The latter is therefore used in this study:

$$(\text{AGB})_{\text{est}} = p \times \exp(-1.499 + 2.148 \ln(D) + 0.207 (\ln(D))^2 - 0.0281 (\ln(D))^3)$$

Where p = wood density (g/cm^3) and D = DBH (cm). Wood density values were taken from a database compiled from the Australian literature and field collections. Values from the literature were used if sourced from northern Australia. Where more than one measurement was available, mean values were taken for a species. Where a species value was not available

($n = 19$), the genus mean was used ($n = 14$). Where a genus mean was not available, the family mean was used ($n = 4$). Where a family mean was not available, the plot mean was used ($n = 1$). In the absence of specific equations, biomass estimations for strangler figs ($n = 15$ at last census) were calculated as for other species. While estimates for mature strangler figs ($n = 2$, 0.38% of total study biomass at last census) may be over-calculated due to void space between multiple stems being included, estimations for younger individuals are under-calculated due to only individual ≥ 10 cm stems being measured.

Data analysis

We used linear regression to assess the variation in total AGB explained by the single largest tree in each plot, and by the top 5, 10, 15 and 20% of largest trees in each plot. Relative root mean square errors were calculated to assess precision of the regression model.

Mortality and recruitment rates were calculated as per [31]. Thus, for mortality:

$$m = \frac{\ln n_0 - \ln S_t}{t}$$

For recruitment:

$$r = \frac{\ln n_t - \ln S_t}{t}$$

Where the census interval is t , n_0 is the population size at time 0 and n_t is the population size at time t . The number of survivors at time t is S_t . Mortality and recruitment rates were calculated for each size class (large trees ≥ 70 cm DBH, medium trees 30–70 cm, and small trees < 30 cm DBH) at each census interval for each plot and then averaged by decade across all plots.

Trees in each plot were ranked by decreasing size according to their AGB and their contribution to total AGB calculated. To determine biomass hyperdominance, we calculated the number of species that collectively account for 50% of the total biomass both at the plot and regional scale at the most recent survey. The contribution of the largest trees to total species richness for each plot was also calculated.

Results

Over all census periods, 81 species were recorded as large trees (≥ 70 cm), which is 16.6% of all species in the dataset. Three species were strangler figs (*Ficus* sp.: Moraceae). The family Myrtaceae had the highest number of large tree species ($n = 11$), while the Sterculiaceae had the highest proportion of species reaching large diameter status (42%, $n = 5$). Species that grew into large trees had a significantly lower wood density (mean = 0.59 g/cm³) than species that did not (mean = 0.64 g/cm³) (ANOVA $F_{(1, 488)} = 6.51$, $p = 0.011$).

Across the 20 plots the mean AGB at the last census was 590 ± 169 SD Mg/ha (range 307–909) (Table 1). The size class 10–20 cm DBH contributed 60.5% of the number of trees (Fig 1). At the last census the size class 30–40 cm DBH contributed the most AGB of any 10 cm size class bracket (13.7%), a shift from the first census where the 40–50 cm DBH size class contributed the most (15.0%) (Fig 2). The total number of large trees was 169 at the first survey and 182 at the last survey. At the last census the average number of large trees per hectare was 18.2 ± 5.6 SD, comprising 2.4% of total trees, and large trees accounted for 32.7% of AGB across all plots (range 0–52.3%). The mean proportion of the total AGB accounted for by the cumulative number of largest trees increased rapidly reaching an average of 49% for the 20 largest trees (~5% of the trees) and 84% for the largest 100 trees (~27% of the trees) (Fig 3A and 3B).

Table 1. Above ground biomass and stem demographics of the 20 CSIRO permanent plots.

Plot	First census					Last census				
	Date	AGB (Mg/ha)	Number of stems	Number of stems ≥ 70 cm DBH	Largest stem (cm DBH)	Date	AGB (Mg/ha)	Number of stems	Number of stems ≥ 70 cm DBH	Largest stem (cm DBH)
ep18	1973	825	454	11	125.7	2016	838	427	13	120.5
ep19	1975	480	400	7	90.9	2016	307	387	3	87.8
ep2	1971	296	462	0	54.8	2015	343	511	0	55.4
ep29	1975	429	494	1	83.7	2015	478	409	2	98.6
ep3	1971	782	502	12	113.1	2015	814	466	15	118.0
ep30	1976	680	552	8	94.9	2013	674	550	10	94.2
ep31	1976	667	238	13	108.9	2013	537	191	6	118.7
ep32	1975	394	447	4	106.6	2015	421	402	5	119.0
ep33	1976	743	315	13	196.5	2015	806	250	23	122.7
ep34	1976	584	302	10	118.1	2016	530	259	10	122.9
ep35	1977	445	501	2	84.5	2016	551	399	5	92.2
ep37	1977	978	386	14	147.7	2013	909	440	12	158.8
ep38	1977	513	382	6	131.2	2016	505	324	7	134.4
ep4	1972	369	486	1	70.4	2016	456	454	6	87.0
ep40	1978	697	496	9	106.6	2013	627	414	9	120.6
ep41	1977	519	395	3	88.4	2015	589	314	5	77.8
ep42	1977	547	243	17	134.8	2013	403	234	8	126.5
ep43	1978	730	387	16	127.3	2016	635	349	15	116.0
ep44	1980	675	439	11	109.3	2013	708	399	12	111.5
ep9	1972	638	441	11	121.2	2015	679	411	16	108.1
Mean \pm SD		599 \pm 172	416 \pm 87	8.5 \pm 5.2			590 \pm 169	379 \pm 93	9.1 \pm 5.6	

<https://doi.org/10.1371/journal.pone.0208377.t001>

The number of trees ≥ 70 cm DBH explained 62% of the variation in AGB across plots. The AGB of the single largest tree in each plot explained 25% of the variation in total AGB across all plots and the AGB of the top 5% of largest trees explained approximately 70% (Table 2).

Species richness was relatively high among the largest trees with the top 25 largest trees in a plot on average accounting for nearly 25% of total species richness in that plot; the 100 largest trees in a plot accounted for 56% of total species richness (Fig 4). At the last census, 123 species out of 443 (27.8%) contributed to the top 50% of total AGB across all plots. At the plot level, an average of 20% of species contributed to the top 50% of AGB in the last census (range 3% to 44%). The mean DBH for biomass hyperdominant species was 74.7 cm \pm 25.5 SD compared with non-biomass hyperdominant species at 39.0 cm \pm 27.0 SD.

The mean annual rate of mortality for large trees was higher than for small and medium size trees in the first and last decade (decades beginning 1970 and 2010), though not significantly so, and significantly lower in the decade beginning 1990 (Fig 5) (ANOVA $F_{(2,138)} = 15.76, p < 0.001$). Recruitment of large trees was also lowest in the 1970s (ANOVA $F_{(2,89)} = 6.99, p = 0.002$) but was higher than that for small and medium trees for the remainder of the monitoring period (not significant), though variation was high due to smaller overall numbers.

Discussion

The contribution of large trees to above ground biomass

Australian wet tropical forests have among the highest biomass of tropical forests globally. On average, AGB in Australian lowland rainforest (<600 m) is 1.7 times higher than in lowland

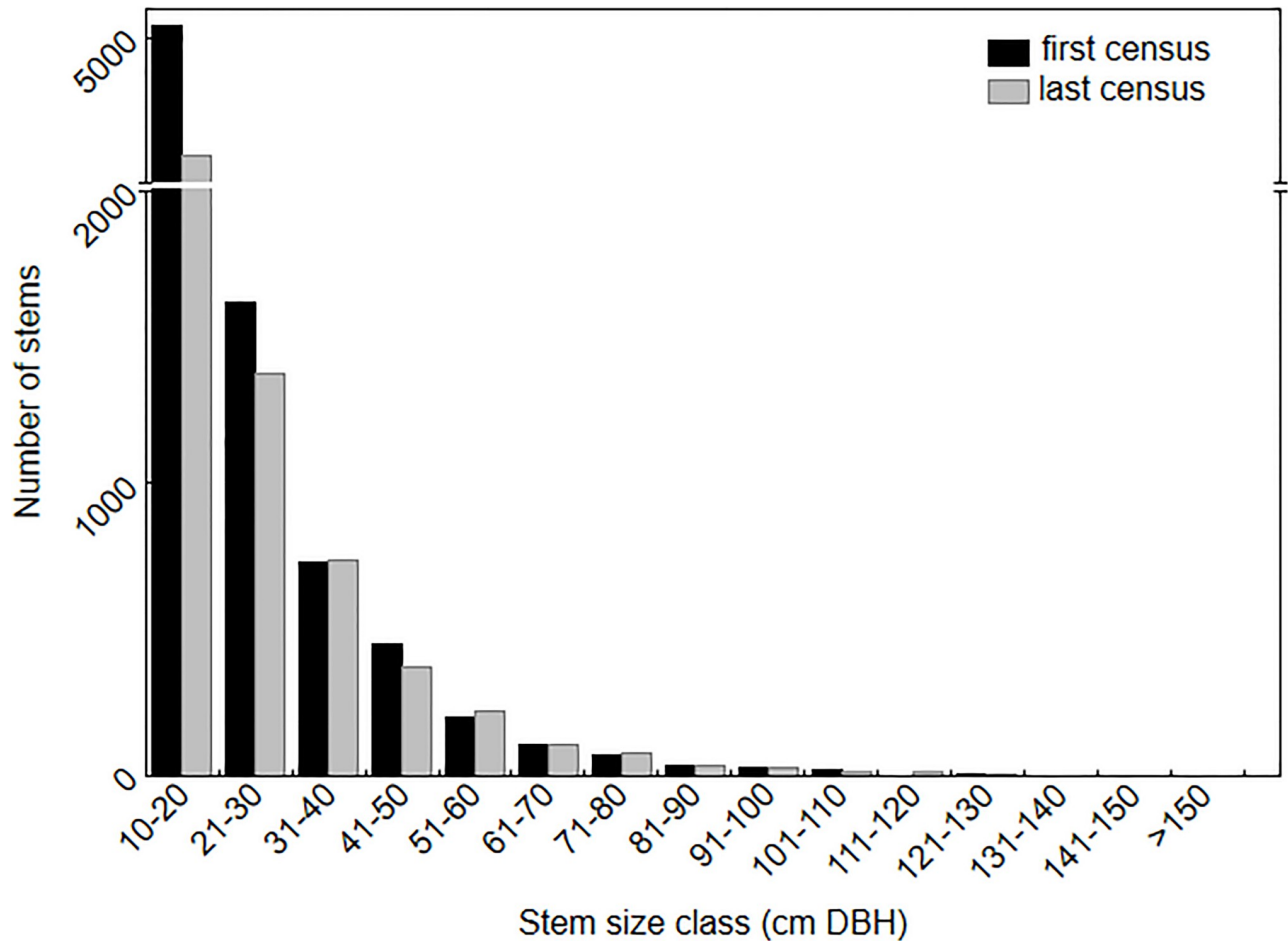


Fig 1. Contribution to total tree number by size class across the 20 CSIRO permanent plots. Note the broken Y-axis.

<https://doi.org/10.1371/journal.pone.0208377.g001>

Amazonian forest, and between 1.2 and 1.3 times higher than in African and Asian lowland forests (Table 3, [4]). Comparisons are similar or more pronounced in upland forests (600–1000 m) [32–34] and highland forests (1000–1500 m) [33, 35, 36]. Interestingly, AGB values in Australian lowland forests are also considerably higher than those in Papua New Guinea [37], our nearest neighbour and most phylogenetically similar rainforest. The high AGB in Australian wet tropical rainforest is largely a result of large-diameter trees with the density of trees ≥ 70 cm DBH explaining ~62% of the variation in AGB across plots. In addition, Australian wet tropical rainforests have a significantly higher stem density of total (≥ 10 cm DBH), small, and medium trees than forests in Africa, South-east Asia and America (Fig 6). Although the AGB of trees < 70 cm DBH is not a good predictor of AGB in our plots ($R^2 = 0.0065$, Table 2), medium-diameter trees (30–70 cm) contribute close to 50% of our total AGB and are also seen as important contributors to AGB in some forests across the tropics [18]. There is strong evidence that water use efficiency is much higher in Australian wet tropical rainforest than in similar forests globally resulting in trees rarely becoming water limited [38], most likely due to species evolving to survive in the generally dry continent of Australia [39]. This potentially allows greater production of AGB presuming variables such as soil nutrients and solar radiation interception are not limiting.

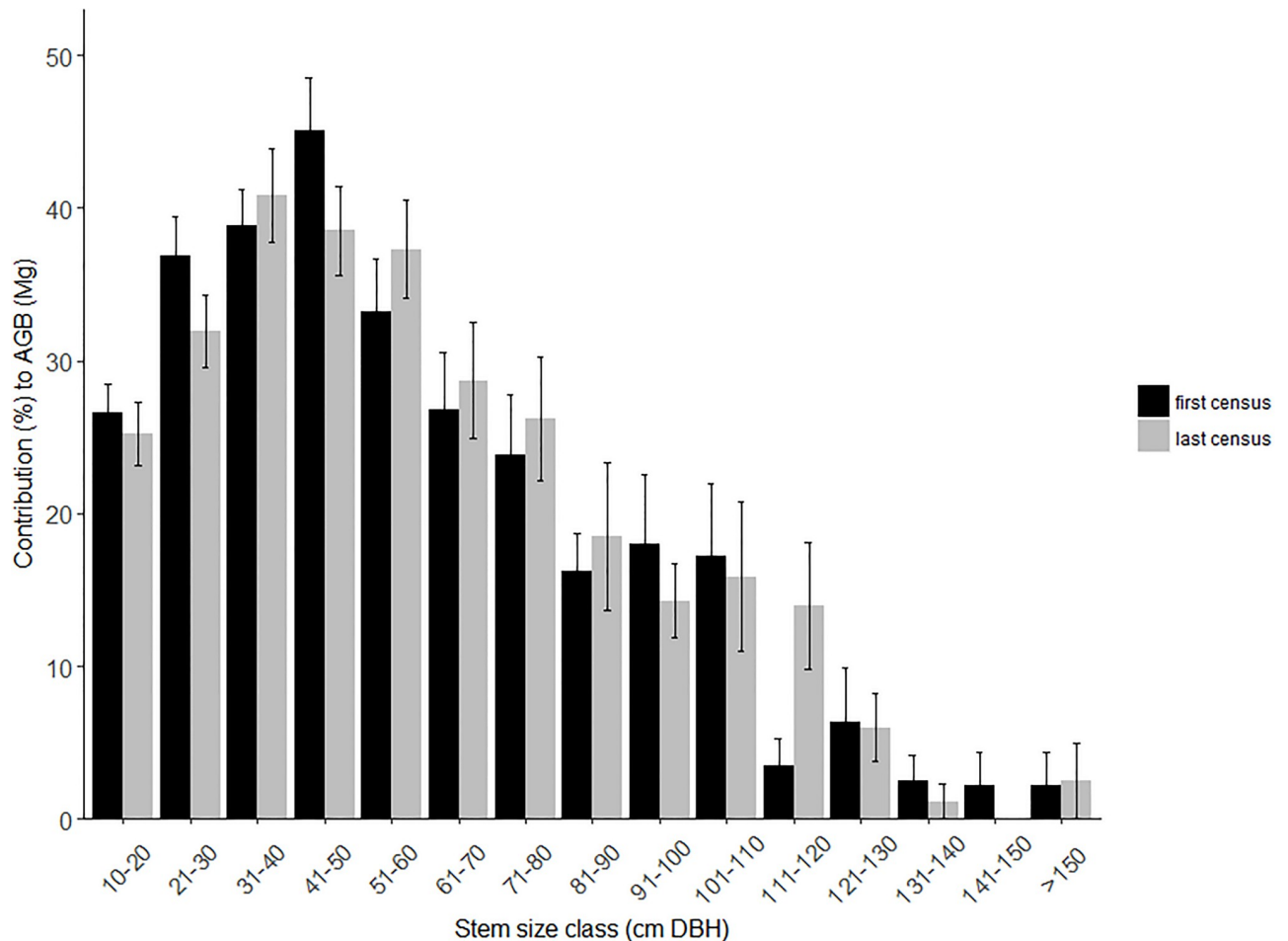


Fig 2. Mean contribution to AGB by size class for the 20 CSIRO permanent plots. Bars represent ± 1 SE.

<https://doi.org/10.1371/journal.pone.0208377.g002>

Tree height and wood density are important contributors to individual stem AGB [29] but neither appear to play a significant role in driving the high stand AGB seen in Australian tropical forests. Mean canopy heights in Australian wet tropical rainforest are in the order of 20–35 m [21, 30], emergent trees are rare, and asymptotic maximum tree heights are similar to America and significantly lower than those in Asia and Africa [52]. The mean wood density for species in our study is 0.63 g/cm^3 , (± 0.16 SD, $n = 443$), not considerably different from tropical rainforests in America (0.65 g/cm^3), Asia (0.59 g/cm^3) and Africa (0.65 g/cm^3) [4]. Our results contradict a broad global pattern of increasing AGB with increasing soil fertility [4]. Only one of our plots is considered eutrophic (measured using exchangeable Ca and Total P%); ep33 of recent volcanic origin with an AGB of 806 Mg/ha. Fifteen of the remaining plots are on highly weathered soils and are considered oligotrophic. Of these, ep18 and ep3 are ranked the second and third highest AGB.

The role of a small number of large trees in driving forest biomass is now well recognised [3, 4, 18] and the concentration of AGB in a limited number of large trees has been quantified recently across the tropics [4, 17, 18, 53]. Despite Australian wet tropical rainforest holding considerably more biomass and higher stem densities than rainforests elsewhere in Asia, Africa and America, there are consistencies in the contribution of the largest trees to biomass. Large-diameter trees (≥ 70 cm DBH) contribute approximately 33% of biomass and comprise

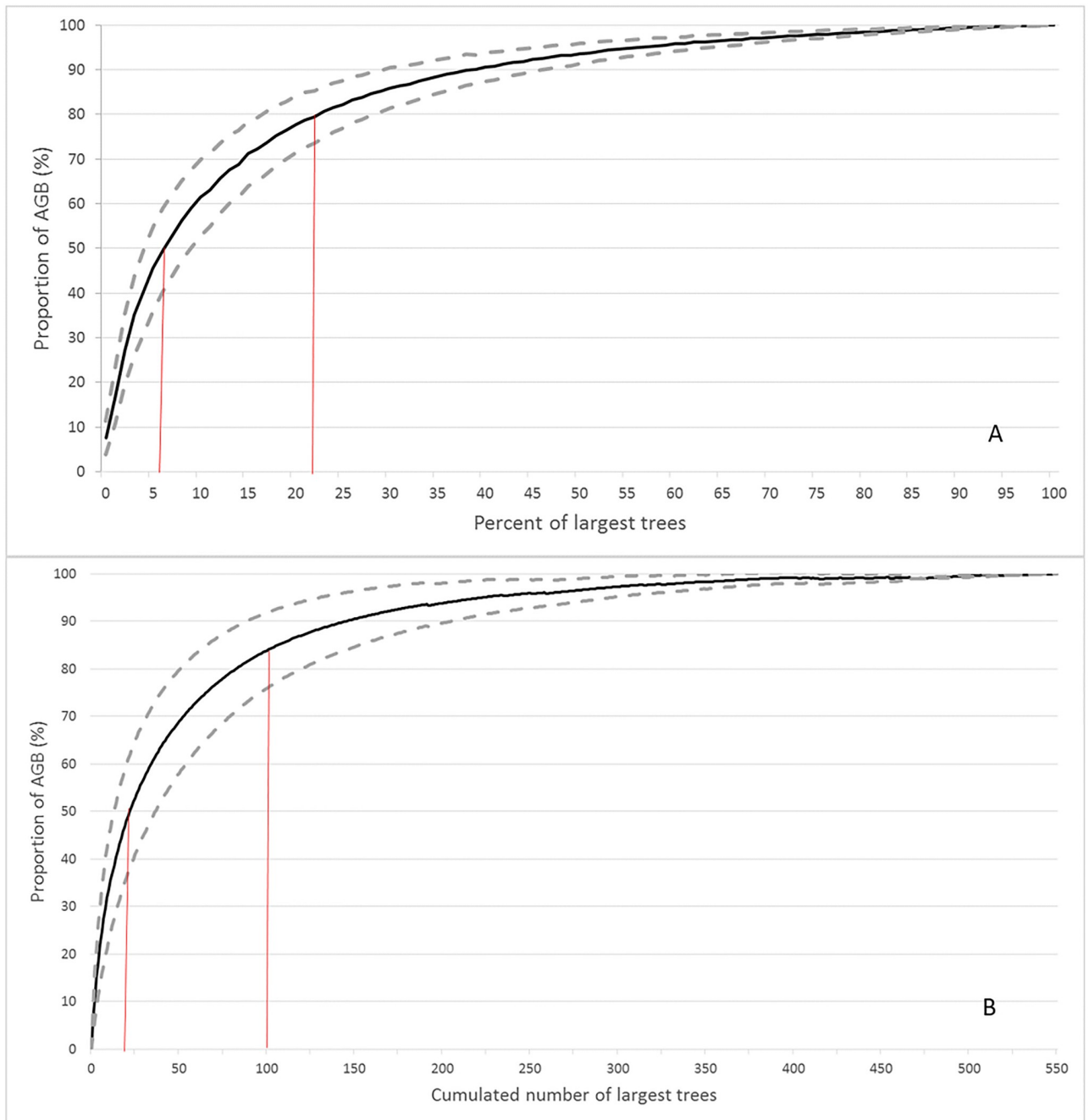


Fig 3. Proportion of AGB accounted for by the largest trees. (A) percent of largest trees. Vertical lines indicate the percent of largest trees accounting for 50% and 80% of total AGB. (B) cumulative number of largest trees. Vertical lines indicate the proportion of AGB accounted for by the 20 and 100 largest trees. The dashed lines represent ± 1 SD of the mean.

<https://doi.org/10.1371/journal.pone.0208377.g003>

2.4% of trees ≥ 10 cm DBH in Australian wet tropical rainforest; within the range of values reported for Asian and African forests but considerably greater than reported for Amazonian forests (Table 3). The density of the largest trees explains much of the variation ($\sim 62\%$) in AGB across the plots, slightly less than the average pantropical estimate of $\sim 70\%$ (excluding Australia) [4].

Table 2. Linear regression of plot AGB against: Total number of trees per plot, number of large and small trees per plot, AGB of the largest tree per plot, and the AGB of the largest 5, 10, 15 and 20% of trees in each plot. Relative root mean square errors (rRMSE) was calculated for regressions against AGB variables.

	R ²	F	Sig	rRMSE
Total number of trees	0.016	0.302	P = 0.590	
Number of trees ≥70 cm	0.616	28.920	p<0.001	
Number of trees <70 cm	0.006	0.118	p = 0.737	
Largest tree	0.252	6.068	P = 0.024	0.230
top 5%	0.692	40.424	p<0.001	0.151
top 10%	0.849	100.942	p<0.001	0.106
top 15%	0.916	196.604	p<0.001	0.079
top 20%	0.952	359.677	p<0.001	0.059

<https://doi.org/10.1371/journal.pone.0208377.t002>

The high biomass and stem density of Australian wet tropical rainforest results in some inconsistencies with pan tropical rainforests in total AGB prediction from the largest trees. The AGB of the single largest tree on each of our plots only explained 25% of the variation in AGB total across all plots which is approximately half that in African forests [17] and in North and South American forests [53]. The largest 5% of trees in a plot (ranging from 9 to 27 trees, average 18.5) explains 70% of the variance across plots, lower than that for African forests where the largest 20 trees explain 87% of variance [17]. In our plots, measurement of the top 10 to 15% of trees (average 38 to 58 trees) is needed to explain close to 90% of the variation in AGB across plots. Measurement of AGB for the top 5% of trees allows an estimate of AGB total with approximately 85% precision (Table 2), similar to that reported for African forests [17] and slightly better than reported in a global tropical forests analysis (excluding Australia) (~82% for the top 20 trees) [18].

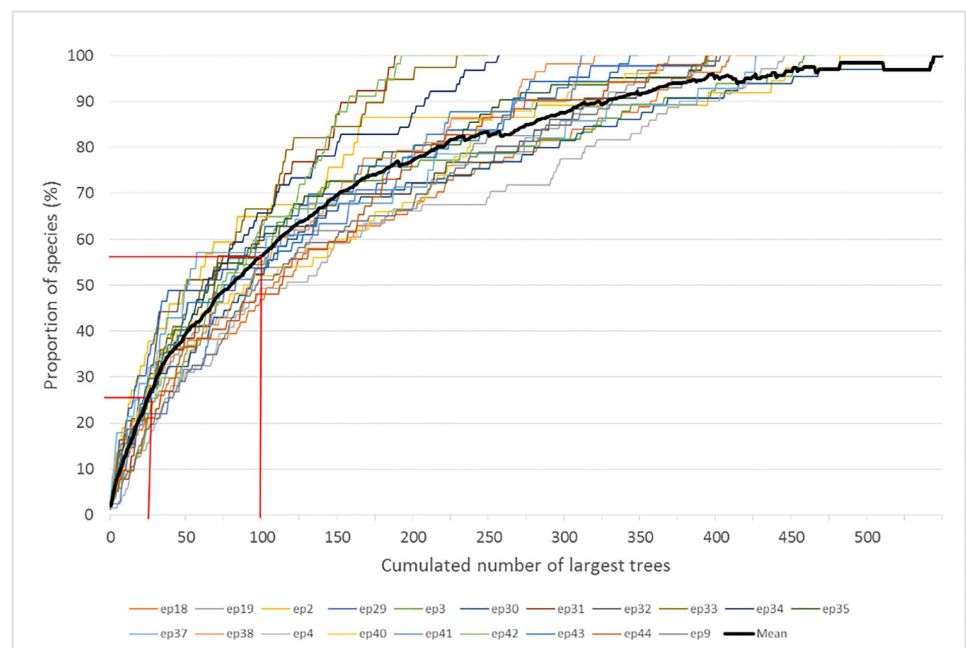


Fig 4. The proportion of total species accounted for by the cumulated number of largest trees. Results are displayed for each individual plot (coloured lines) with the heavy black line showing the mean. Vertical lines indicate the proportion of species accounted for by the top 25 and top 100 largest trees.

<https://doi.org/10.1371/journal.pone.0208377.g004>

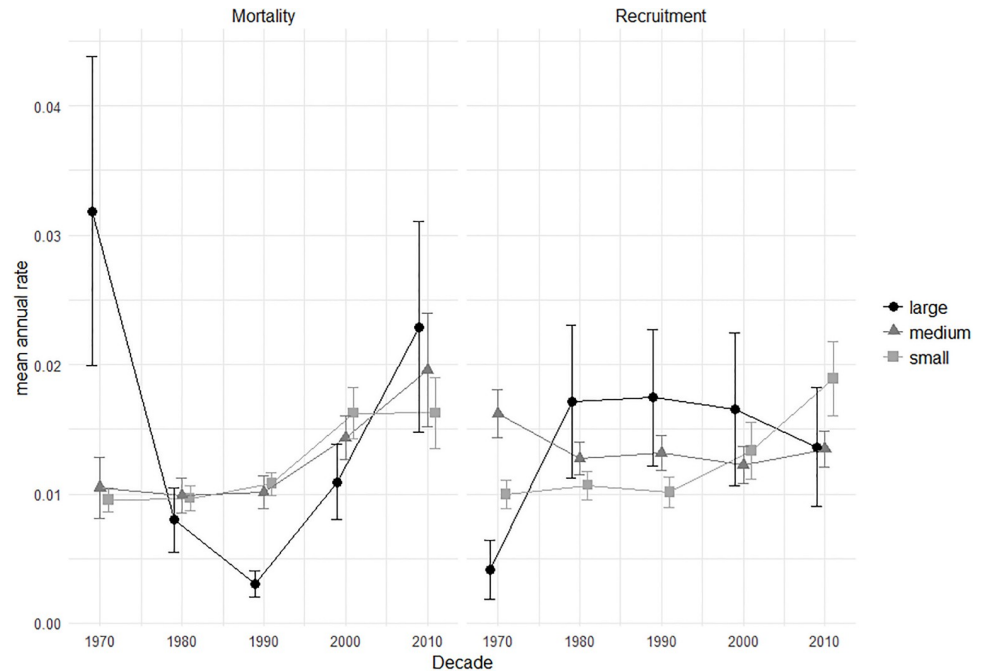


Fig 5. Mean annual rate of mortality and recruitment across all plots during each decade for large (≥ 70 cm dbh), medium (30–70 cm dbh) and small (< 30 cm dbh) trees. Bars represent ± 1 SE.

<https://doi.org/10.1371/journal.pone.0208377.g005>

Mortality and recruitment of large trees

We have previously shown [22] that the mean relative change in AGB in Australian wet tropical rainforest shifted from predominantly positive to predominantly negative during the 40 year monitoring period. Although the number of large trees across all plots in our current study increased by 8% over the census period we saw a recent increased mortality and decreased recruitment of large trees supporting a general trend of declining growth rates in Australian wet tropical rainforest. However, this must be viewed with caution as small overall numbers of large trees in 0.5 hectare plots (mean = 9.1 ± 5.6 SD) contribute considerable variation in rates of mortality and recruitment. In addition, productivity in Australian wet tropical rainforest is primarily influenced by large scale disturbance events [22]. Mortality and recruitment over the five decades of census was driven by three severe cyclones (1986, 2006 and 2010) and an extended dry period around 1986 that impacted all but three plots and may not reflect trends over the longer term.

Table 3. Large-diameter tree (> 70 cm DBH) and AGB (\pm SD) characteristics of Australian, Asian, American and African tropical rainforest.

	Mean AGB (Mg/ha)	Number of large stems/ha	Contribution of large trees to AGB (%)	Percentage of large stems
Australia [#]	590 \pm 169	18.2 \pm 5.6	32.7	2.4
Asia [*]	393 \pm 109	13.4 \pm 6.7	39.1	2.4
Amazon [*]	288 \pm 105	7.5 \pm 5.3	25.1	1.5
Africa [*]	418 \pm 92	15.8 \pm 5.4	44.5	3.8

[#]This study,

^{*}[4]

<https://doi.org/10.1371/journal.pone.0208377.t003>

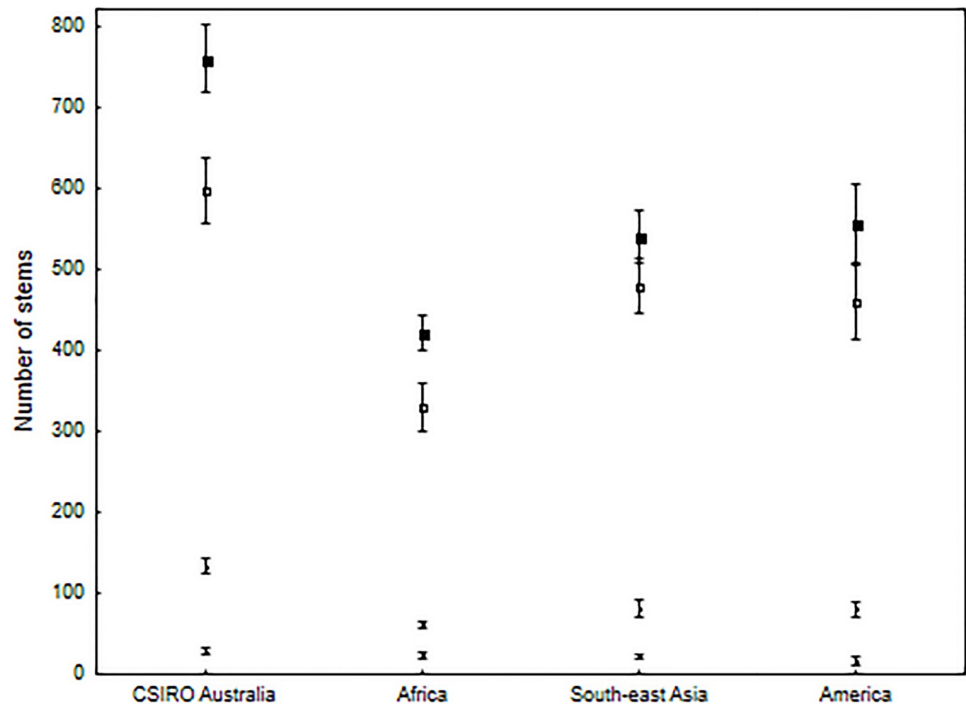


Fig 6. A cross continental comparison of the number of trees per hectare ≥ 10 cm DBH. From top to bottom; all stems ≥ 10 cm DBH, stems 10–30 cm, stems 30–60 cm, stems > 60 cm. CSIRO Australia plots have significantly more stems in each comparison except > 60 cm DBH. Data is taken from rainforest plots > 10 ha in size, $< 18.0^\circ$ north and south of the equator, and within the elevational range of the CSIRO plots. Africa; 6 plots [34, 40, 41], South-east Asia; 7 plots [42–47], America; 8 plots [48–51]. Stems > 60 cm DBH are considered large due to the availability of relevant comparative data. Bars represent ± 1 SE.

<https://doi.org/10.1371/journal.pone.0208377.g006>

Biomass hyperdominance in large trees

Australian wet tropical rainforest does not appear to have strong biomass hyperdominance at the species level. Nearly 28% of species (123 species of 443) accounted for the top 50% of biomass across our plots compared with 1.5% for African forests plots [17] and 5.3% for Amazonian basin plots [20]. At the plot level, biomass hyperdominance ranged from 3% to 44% (average 20%); again much higher than the average 4.4% across African plots. A more realistic estimate for Amazonian-wide hyperdominance was suggested as $\sim 1\%$ (160 species) considering the estimated 16,000 tree species that occur there [20]. We have far fewer plots in our dataset than those used in the Amazonian study, however the wet tropical rainforest of Australia is far less extensive ($\sim 0.2\%$ of the extent of Amazonia rainforest), the number of tree species far less (1450 species), and our dataset spans much of the geographical variation and environmental gradients across the region, including $\sim 31\%$ of all species ≥ 10 cm DBH in the region. If we consider our biomass hyperdominants are a reasonable representation of the region as a whole, then $\sim 10\%$ of tree species contribute 50% of the carbon stock in Australian wet tropical rainforest.

While examples of biomass hyperdominance are numerous in woodland communities in tropical Australia, examples in wet tropical rainforest are harder to find. In our dataset, *Backhousia bancroftii* accounts for the entirety of the top 50% of biomass in plot ep31, in part due to the species being less susceptible to cyclone damage than other species in the community [54]. Other less extensive examples of hyperdominance in the study area not represented in our plots are *Leptospermum woornoorum* that is restricted to wet exposed mountain ridges,

Ceratopetalum virchowii that dominates on a particular low nutrient soil, and *Alstonia scholaris* that resists frequent cyclone disturbance allowing it to dominate on some exposed coastal slopes.

The relatively high proportion and diversity of species reaching a large size and contributing to biomass in Australian wet tropical rainforest has significant implications for the ongoing resilience of these forests. The loss of a single species or a group of closely related dominant species is unlikely to have the same consequences for forest carbon storage and forest function as it would in African or Amazonian forests. Due to the relatively small extent of our rainforest, a disturbance event such as a severe cyclone or a regional drought has the potential to impact a large proportion of the area. Having a high diversity of species in the largest size classes affords a greater level of resilience to such an event as Australian wet tropical rainforest species display a range of responses to disturbance and varied rates of recovery [54]. In addition, high taxonomic diversity safeguards against factors that target particular taxa such as the introduced fungal pathogen Myrtle rust that only infects the family Myrtaceae [55] and soil borne pathogens such as *Phytophthora* spp. that cause higher mortality in large trees and species in the family Elaeocarpaceae [56].

Conclusion

We demonstrate that the contribution to AGB by the largest trees in Australian wet tropical rainforest is generally consistent with that shown for tropical rainforest globally although the high AGB and high contribution from smaller stems introduces some uncertainty in predicting AGB from these large trees. We show that in contrast to African and Amazonian forest, our forests have relatively lower biomass hyperdominance of larger trees. This puts them in a favourable position to withstand effects of environmental change or large scale disturbance events. Finally, the high average AGB in Australian tropical forests is driven primarily by the high density of large trees coupled with contributions from the higher densities of medium size trees.

Supporting information

S1 Fig. The relationship between measured tree height from 1998 CSIRO plot data and derived tree height. a) height derived from [29] equation 6a (grey circles; $y = 3.444 + 0.477 * x$; $r^2 = 0.6285$) and, b) height derived from [26] for Australian moist forest (back circles; $y = 5.284 + 0.7766 * x$; $r^2 = 0.6293$). (TIF)

S2 Fig. The relationship between measured tree height from Robson Creek 25 ha plot data [21] and derived tree height. a) height derived from [29] equation 6a (grey circles; $y = 3.2759 + 0.478 * x$; $p = 0.0000$; $r^2 = 0.6958$ and, b) height derived from [26] for Australian moist forest (back circles; $y = 5.4336 + 0.6638 * x$; $p = 0.0000$; $r^2 = 0.6866$). (TIF)

S3 Fig. Relationship between estimated AGB using measured height, estimated AGB using derived height and estimated AGB using [28] with no height. a) estimated AGB using [29] equation 2 with height derived from [29] equation 6a (triangles, dashed fit; $y = 20.4771 + 0.6152 * x$; $p = 0.0000$; $r^2 = 0.9462$), b) estimated AGB using [29] equation 2 using height derived from [26] for Australian moist forests (grey circles and fit; $y = -59.9526 + 1.2396 * x$; $r = 0.9793$, $p = 0.0000$; $r^2 = 0.9590$). c) estimated AGB using [28] for moist forests without height (black circles and fit; $y = 1.2481 + 1.1607 * x$; $r = 0.9852$, $p = 0.0000$; $r^2 = 0.9706$). (TIF)

Acknowledgments

We thank Suzanne Prober and Garry Cook (CSIRO) and two anonymous reviewers for helpful suggestions in revising the manuscript. We acknowledge the foresight of Dr Geoff Stocker in establishing the CSIRO permanent plots and the many CSIRO staff and volunteers who have helped to measure and maintain the plots since 1971.

Author Contributions

Conceptualization: Matt Bradford, Helen T. Murphy.

Data curation: Matt Bradford.

Formal analysis: Helen T. Murphy.

Funding acquisition: Helen T. Murphy.

Investigation: Matt Bradford, Helen T. Murphy.

Methodology: Matt Bradford, Helen T. Murphy.

Resources: Matt Bradford.

Writing – original draft: Matt Bradford, Helen T. Murphy.

Writing – review & editing: Matt Bradford, Helen T. Murphy.

References

1. Lindenmayer DB, Blanchard W, McBurney L, Blair D, Banks S, Likens GE, et al. Interacting factors driving a major loss of large trees with cavities in a forest ecosystem. *PLoS One*. 2012; 7(10). <https://doi.org/10.1371/journal.pone.0041864> PMID: 23071486
2. Lindenmayer DB, Laurance WF, Franklin JF, Likens GE, Banks SC, Blanchard W, et al. New policies for old trees: averting a global crisis in a keystone ecological structure. *Conserv Lett*. 2014; 7(1):61–9.
3. Lutz JA. Global importance of large-diameter trees. *Global Ecology and Biogeography*. 2018:1–16.
4. Slik JWF, Paoli G, McGuire K, Amaral I, Barroso J, Bastian M, et al. Large trees drive forest above-ground biomass variation in moist lowland forests across the tropics. *Global Ecology and Biogeography*. 2013; 22(12):1261–71. <https://doi.org/10.1111/geb.12092>
5. Thomas RQ, Kellner JR, Clark DB, Peart DR. Low mortality in tall tropical trees. *Ecology*. 2013; 94(4):920–9. <https://doi.org/10.1890/12-0939.1>
6. Lutz JA, Larson AJ, Freund JA, Swanson ME, Bible KJ. The Importance of large-diameter trees to forest structural heterogeneity. *PLoS One*. 2013; 8(12):13. <https://doi.org/10.1371/journal.pone.0082784> PMID: 24376579
7. Lutz JA, Larson AJ, Swanson ME, Freund JA. Ecological importance of large-diameter trees in a temperate mixed-conifer forest. *PLoS One*. 2012; 7(5):15. <https://doi.org/10.1371/journal.pone.0036131> PMID: 22567132
8. Lindenmayer DB, Laurance WF, Franklin JF. Global decline in large old trees. *Science*. 2012; 338(6112):1305–6. <https://doi.org/10.1126/science.1231070> PMID: 23224548
9. Nepstad DC, Tohver IM, Ray D, Moutinho P, Cardinot G. Mortality of large trees and lianas following experimental drought in an Amazon forest. *Ecology*. 2007; 88(9):2259–69. <https://doi.org/10.1890/06-1046.1> PMID: 17918404
10. Van Nieuwstadt MGL, Sheil D. Drought, fire and tree survival in a Borneo rain forest, East Kalimantan, Indonesia. *J Ecol*. 2005; 93(1):191–201. <https://doi.org/10.1111/j.1365-2745.2004.00954.x>
11. Zimmerman JK, Everham EM, Waide RB, Lodge DJ, Taylor CM, Brokaw NVL. Responses of tree species to hurricane winds in subtropical wet forest in Puerto-Rico—implications for tropical tree life-histories. *Journal of Ecology*. 1994; 82(4):911–22. <https://doi.org/10.2307/2261454>
12. Laurance WF, Delamonica P, Laurance SG, Vasconcelos HL, Lovejoy TE. Conservation: Rainforest fragmentation kills big trees. *Nature*. 2000; 404(6780):836-. <https://doi.org/10.1038/35009032>

13. van Mantgem PJ, Stephenson NL, Byrne JC, Daniels LD, Franklin JF, Fule PZ, et al. Widespread increase of tree mortality rates in the western United States. *Science*. 2009; 323(5913):521–4. <https://doi.org/10.1126/science.1165000> PMID: 19164752
14. Lewis SL, Lloyd J, Sitch S, Mitchard ETA, Laurance WF. Changing ecology of tropical forests: evidence and drivers. *Annual Review of Ecology Evolution and Systematics*. 2009; 40:529–49. <https://doi.org/10.1146/annurev.ecolsys.39.110707.173345>
15. Sist P, Mazzei L, Blanc L, Rutishauser E. Large trees as key elements of carbon storage and dynamics after selective logging in the Eastern Amazon. *For Ecol Manage*. 2014; 318:103–9. <https://doi.org/10.1016/j.foreco.2014.01.005>
16. Chave J, Condit R, Muller-Landau HC, Thomas SC, Ashton PS, Bunyavejchewin S, et al. Assessing evidence for a pervasive alteration in tropical tree communities. *Plos Biology*. 2008; 6(3):455–62. <https://doi.org/10.1371/journal.pbio.0060045> PMID: 18318600
17. Bastin JF, Barbier N, Rejou-Mechain M, Fayolle A, Gourlet-Fleury S, Maniatis D, et al. Seeing Central African forests through their largest trees. *Scientific Reports*. 2015;5. <https://doi.org/10.1038/srep13156> PMID: 26279193
18. Bastin JF, Rutishauser E, Kellner JR, Saatchi S, Péliissier R, Hérault B, et al. Pan-tropical prediction of forest structure from the largest trees. *Global Ecology and Biogeography*. 2018; 0(0):1–18. <https://doi.org/10.1111/geb.12803>
19. Stephenson NL, Das AJ, Condit R, Russo SE, Baker PJ, Beckman NG, et al. Rate of tree carbon accumulation increases continuously with tree size. *Nature*. 2014; 507(7490):90+. <https://doi.org/10.1038/nature12914> PMID: 24429523
20. Fauset S, Johnson MO, Gloor M, Baker TR, Monteagudo M A, Brienen RJW, et al. Hyperdominance in Amazonian forest carbon cycling. *Nat Commun*. 2015;6. <https://doi.org/10.1038/ncomms7857> PMID: 25919449
21. Bradford MG, Murphy HT, Ford AJ, Hogan DL, Metcalfe DJ. Long-term stem inventory data from tropical rain forest plots in Australia. *Ecology*. 2014; 95(8):2362–000. <https://doi.org/10.1890/14-0458R.1>
22. Murphy HT, Bradford MG, Dalongeville A, Ford AJ, Metcalfe DJ. No evidence for long-term increases in biomass and stem density in the tropical rain forests of Australia. *Journal of Ecology*. 2013; 101(6):1589–97. <https://doi.org/10.1111/1365-2745.12163>
23. Metcalfe DJ, Ford AJ. *Floristics and Plant Biodiversity of the Rainforests of the Wet Tropics. Living in a Dynamic Tropical Forest Landscape*: Blackwell Publishing, Ltd; 2009. p. 123–32.
24. Brown S, Lugo AE. Aboveground biomass estimates for tropical moist forests of the Brazilian Amazon. *Interciencia*. 1992; 17(1):8–18.
25. Vincent JB, Henning B, Saulei S, Sosanika G, Weiblen GD. Forest carbon in lowland Papua New Guinea: Local variation and the importance of small trees. *Austral Ecology*. 2015; 40(2):151–9. <https://doi.org/10.1111/aec.12187> PMID: 26074730
26. Feldpausch TR, Banin L, Phillips OL, Baker TR, Lewis SL, Quesada CA, et al. Height-diameter allometry of tropical forest trees. *Biogeosciences*. 2011; 8(5):1081–106. <https://doi.org/10.5194/bg-8-1081-2011>
27. Phillips OL, Malhi Y, Vinceti B, Baker T, Lewis SL, Higuchi N, et al. Changes in growth of tropical forests: Evaluating potential biases. *Ecol Appl*. 2002; 12(2):576–87. <https://doi.org/10.2307/3060964>
28. Chave J, Andalo C, Brown S, Cairns MA, Chambers JQ, Eamus D, et al. Tree allometry and improved estimation of carbon stocks and balance in tropical forests. *Oecologia*. 2005; 145(1):87–99. <https://doi.org/10.1007/s00442-005-0100-x> PMID: 15971085
29. Chave J, Réjou-Méchain M, Búrquez A, Chidumayo E, Colgan MS, Delitti WBC, et al. Improved allometric models to estimate the aboveground biomass of tropical trees. *Global Change Biol*. 2014; 20(10):3177–90. <https://doi.org/10.1111/gcb.12629> PMID: 24817483
30. Bradford MG, Metcalfe DJ, Ford A, Liddell MJ, McKeown A. Floristics, stand structure and aboveground biomass of a 25-ha rainforest plot in the wet tropics of Australia. *Journal of Tropical Forest Science*. 2014; 26(4):543–53.
31. Condit R, Ashton PS, Manokaran N, LaFrankie JV, Hubbell SP, Foster RB. Dynamics of the forest communities at Pasoh and Barro Colorado: comparing two 50-ha plots. *Philos Trans R Soc Lond B Biol Sci*. 1999; 354(1391):1739. <https://doi.org/10.1098/rstb.1999.0517> PMID: 11605618
32. Aiba S, Kitayama K. Structure, composition and species diversity in an altitude-substrate matrix of rain forest tree communities on Mount Kinabalu, Borneo. *Plant Ecology*. 1999; 140(2):139–57. <https://doi.org/10.1023/a:1009710618040>
33. Culmsee H, Leuschner C, Moser G, Pitopang R. Forest aboveground biomass along an elevational transect in Sulawesi, Indonesia, and the role of Fagaceae in tropical montane rain forests. *Journal of Biogeography*. 2010; 37(5):960–74. <https://doi.org/10.1111/j.1365-2699.2009.02269.x>

34. Makana JR, Ewango CN, McMahon SM, Thomas SC, Hart TB, Condit R. Demography and biomass change in monodominant and mixed old-growth forest of the Congo. *J Trop Ecol.* 2011; 27:447–61. <https://doi.org/10.1017/s0266467411000265>
35. Alves LF, Vieira SA, Scaranello MA, Camargo PB, Santos FAM, Joly CA, et al. Forest structure and live aboveground biomass variation along an elevational gradient of tropical Atlantic moist forest (Brazil). *Forest Ecology and Management.* 2010; 260(5):679–91. <https://doi.org/10.1016/j.foreco.2010.05.023>
36. Taylor D, Hamilton AC, Lewis SL, Nantale G. Thirty-eight years of change in a tropical forest: plot data from Mpanga Forest Reserve, Uganda. *Afr J Ecol.* 2008; 46(4):655–67. <https://doi.org/10.1111/j.1365-2028.2008.00955.x>
37. Peck MR, Kaina GS, Hazell RJ, Isua B, Alok C, Paul L, et al. Estimating carbon stock in lowland Papua New Guinean forest: Low density of large trees results in lower than global average carbon stock. *Austral Ecology.* 2017; 42(8):964–75. <https://doi.org/10.1111/aec.12525>
38. McJannet D, Fitch P, Disher M, Wallace J. Measurements of transpiration in four tropical rainforest types of north Queensland, Australia. *Hydrological Processes.* 2007; 21(26):3549–64. <https://doi.org/10.1002/hyp.6576>
39. Rossetto M, Crayn D, Ford A, Mellick R, Sommerville K. The influence of environment and life-history traits on the distribution of genes and individuals: a comparative study of 11 rainforest trees. *Mol Ecol.* 2009; 18(7):1422–38. <https://doi.org/10.1111/j.1365-294X.2009.04111.x> PMID: 19284473
40. Chuyong GB, Condit R, Kenfack D, Losos EC, Moses SN, Songwe NC, et al. Korup Forest Dynamics Plot, Cameroon. In: Losos E LE, editor. *Tropical forest diversity and dynamism: findings from a large scale network.* Chicago: University of Chicago Press; 2004. p. 506–16.
41. Memiaghe HR, Lutz JA, Korte L, Alonso A, Kenfack D. Ecological importance of small-diameter trees to the structure, diversity and biomass of a tropical evergreen forest at Rabi, Gabon. *PLoS One.* 2016; 11(5):15. <https://doi.org/10.1371/journal.pone.0154988> PMID: 27186658
42. Bunyavejchewin S, LaFrankie JV, Baker PJ, Davies SJ, Ashton PS. *Forest Trees of Huai Kha Khaeng Wildlife Sanctuary, Thailand: Data from the 50-Hectare Forest Dynamics Plot.* Center for Tropical Forest Science. Thailand: National Parks, Wildlife and Plant Conservation Department, Thailand; 2009.
43. Co LL, LaFrankie JV, Lagunzad DA, Pasion KAC, Consunji HT, Bartolome NA, et al. *Forest Trees of Palanan, Philippines: a Study in Population Ecology.* Diliman: University of Philippines; 2006.
44. Gunatilleke CVS, Gunatilleke IAUN, Ashton PS, Ethugala AUK, Weerasekera NS, Asufali S. *Sinharaja Forest Dynamics Plot, Sri Lanka.* In: Losos EL E., editor. *Tropical forest diversity and dynamism: findings from a large-scale network.* Chicago: University of Chicago Press; 2004. p. 599–608.
45. Lee HS, Tan S, Davies SJ, LaFrankie JV, Ashton PS, Yamakura T, et al. *Lambir Forest Dynamics Plot, Sarawak, Malaysia.* In: Losos E, Leigh E., editor. *Tropical forest diversity and dynamism: findings from a large scale network.* Chicago: University of Chicago Press; 2004. p. 527–39.
46. Manokaran N, LaFrankie JV. *Stand structure of Pasoh Forest Reserve, a lowland rainforest in Peninsular Malaysia.* *Journal of Tropical forest Science.* 1990; 3(1):14–24.
47. Sukumar R, Suresh HS, Dattaraja HS, John R, Joshi NV. *Mudumalai Forest Dynamics Plot, India.* In: Losos E, Leigh E., editor. *Tropical forest diversity and dynamism: findings from a large-scale network.* Chicago: University of Chicago Press; 2004. p. 551–63.
48. Chave J, Olivier J, Bongers F, Chatelet P, Forget PM, van der Meer P, et al. Above-ground biomass and productivity in a rain forest of eastern South America. *J Trop Ecol.* 2008; 24:355–66. <https://doi.org/10.1017/s0266467408005075>
49. Duque J. Insights into regional patterns of Amazonian forest structure, diversity and dominance from three large terra firma forest dynamics plots. *Biodiversity and Conservation.* 2017; 26:669–86.
50. Leigh EG, Loo de Lao S, Condit R, Hubbell SP, Foster RB, Perez R. *Barro Colorado Island Forest Dynamics Plot, Panama.* In: Losos E, leigh E., editor. *Tropical forest diversity and dynamism: findings from a large scale network.* Chicago: University of Chicago Press; 2004. p. 451–63.
51. Thompson J, Brokaw N, Zimmerman JK, Waide RB, Everham EM III, Schaefer DA. *Luiquillo Forest Dynamics Plot, Puerto Rico, United States.* In: Losos E, leigh E., editor. *Tropical forest diversity and dynamism: findings from a large scale network.* Chicago: University of Chicago Press; 2004. p. 540–50.
52. Banin L, Feldpausch TR, Phillips OL, Baker TR, Lloyd J, Affum-Baffoe K, et al. What controls tropical forest architecture? Testing environmental, structural and floristic drivers. *Global Ecology and Biogeography.* 2012; 21(12):1179–90. <https://doi.org/10.1111/j.1466-8238.2012.00778.x>
53. Stegen JC, Swenson NG, Enquist BJ, White EP, Phillips OL, Jorgensen PM, et al. Variation in above-ground forest biomass across broad climatic gradients. *Global Ecology and Biogeography.* 2011; 20(5):744–54. <https://doi.org/10.1111/j.1466-8238.2010.00645.x>

54. Metcalfe DJ, Bradford MG, Ford AJ. Cyclone damage to tropical forests: species and community level impacts. *Austral Ecology*. 2008; 33:432–41.
55. Carnegie AJ, Kathuria A, Pegg GS, Entwistle P, Nagel M, Giblin FR. Impact of the invasive rust *Puccinia psidii* (myrtle rust) on native Myrtaceae in natural ecosystems in Australia. *Biological Invasions*. 2016; 18(1):127–44. <https://doi.org/10.1007/s10530-015-0996-y>
56. Metcalfe DJ, Bradford MG. Rain forest recovery from dieback, Queensland, Australia. *Forest Ecology and Management*. 2008; 256(12):2073–7. <https://doi.org/10.1016/j.foreco.2008.07.040>