

RESEARCH ARTICLE

Pre-existing comorbidity modify emergency room visit for out-of-hospital cardiac arrest in association with ambient environments

Yu-Chun Wang^{1,2}, Yi-Chun Chen³, Chun-Yu Ko¹, Yue-Liang Leon Guo^{4,5}, Fung-Chang Sung^{6,7*}

1 Department of Environmental Engineering, College of Engineering, Zhongli, Taiwan, **2** Research Center for Environmental Risk Management, Chung Yuan Christian University, Zhongli, Taiwan, **3** Department of Health Management, I-Shou University, Kaohsiung, Taiwan, **4** Department of Environmental and Occupational Medicine, National Taiwan University College of Medicine, Taipei, Taiwan, **5** Division of Environmental Health and Occupational Medicine, National Health Research Institutes, Zhunan, Miaoli County, Taiwan, **6** Department of Health Services Administration, China Medical University, Taichung, Taiwan, **7** Management Office for Health Data, China Medical University Hospital, Taichung, Taiwan

* fcsung1008@yahoo.com, fcsung@mail.cmu.edu.tw



OPEN ACCESS

Citation: Wang Y-C, Chen Y-C, Ko C-Y, Guo Y-LL, Sung F-C (2018) Pre-existing comorbidity modify emergency room visit for out-of-hospital cardiac arrest in association with ambient environments. PLoS ONE 13(9): e0204593. <https://doi.org/10.1371/journal.pone.0204593>

Editor: Chiara Lazzeri, Azienda Ospedaliero Universitaria Careggi, ITALY

Received: February 21, 2018

Accepted: September 11, 2018

Published: September 26, 2018

Copyright: © 2018 Wang et al. This is an open access article distributed under the terms of the [Creative Commons Attribution License](https://creativecommons.org/licenses/by/4.0/), which permits unrestricted use, distribution, and reproduction in any medium, provided the original author and source are credited.

Data Availability Statement: The insurance claims data underlying this study is from the National Health Insurance Research Database (NHIRD), which has been transferred to the Health and Welfare Data Science Center (HWDC). Interested researchers can obtain the data through formal application to the HWDC, Department of Statistics, Ministry of Health and Welfare, Taiwan (<http://dep.mohw.gov.tw/DOS/np-2497-113.html>). The daily meteorological records can be requested from Central Weather Bureau (<https://www.cwb.gov.tw/V7e/>) Data application hotline: +886-2-2349110.

Abstract

Background

This study evaluated risks of emergency room visit (ERV) for out-of-hospital cardiac arrest (OHCA) in 2005–2011, among patients with cardiologic and metabolic syndromes (CMS), in association with ambient environments.

Methods

Pooled and area-specific weather related cumulative six-day (lags 0 to 5) relative risks (RRs) and confidence intervals (CIs) of ERV for OHCA were evaluated for CMS cases, using distributed lag nonlinear models and multivariate meta-analytical second-stage model in association with the daily average temperatures and daily concentrations of air pollutants.

Results

ERV risk increased as average temperature dropped to <27°C. At the mean temperature of 14°C, the cumulative six-day RRs of ERV were 1.73 (95% CI: 1.22, 2.46) for all OHCA patients, 1.74 (95% CI: 1.06, 2.84) for OHCA patients younger than 65 years old, and 1.99 (95% CI: 1.03, 3.81) for subjects with pre-existing hypertension. High temperature was also associated with elevated ERV of OHCA. Increased ERV risks in cases with pre-existing hypertension and diabetes mellitus were also associated with concentrations of air pollutants in northern Taiwan.

Conclusions

Our data provided evidences to clinicians, emerging medical services and public health that the ERV risk for OHCA patients is greater at low temperature than at high temperature.

The daily air pollution records can be directly downloaded from the website of the Taiwan Environmental Protection Administration (<https://taqm.epa.gov.tw/taqm/en/HourlyData.aspx>). The authors confirm that they had no special access privileges to these data sets.

Funding: This study was supported by grants from the Ministry of Science and Technology (MOST 104-2633-M-033-00 and MOST 104-2621-M-006-002-), National Health Research Institutes (NHRI-106A1-PDCO-3617191 and MOHW105-TDU-M-212-113003), and Central Weather Bureau (MP10501-0125) of Taiwan, Taiwan Ministry of Health and Welfare Clinical Trial and Research Center of Excellence (MOHW106-TDU-B-212-113004), the research laboratory of pediatrics, Children's Hospital of China Medical University (grant number DMR-105-042), China Medical University Hospital (DMR-106-025), Academia Sinica Taiwan Biobank Stroke Biosignature Project (BM10501010037), NRPB Stroke Clinical Trial Consortium (MOST 105-2325-B-039-003), Tseng-Lien Lin Foundation, Taichung, Taiwan, Taiwan Brain Disease Foundation, Taipei, Taiwan, and Katsuzo and Kiyo Aoshima Memorial Funds, Japan.

Competing interests: The authors have declared that no competing interests exist.

Abbreviations: CI, confidence interval; DLNM, distributed lag non-linear model; ERV, emergency room visits; P&I, pneumonia and influenza; OHCA, out-of-hospital cardiac arrest; PM₁₀, particulate matter less than 10µm in aerodynamic diameter; PM_{2.5}, particulate matter less than 2.5µm in aerodynamic diameter; RR, relative risk; RH, relative humidity; WS, wind speed.

Patients with cardio and metabolic disorders need to pay greater attention to low temperature and avoid heat wave.

Introduction

Sudden cardiac arrest is one of leading causes of deaths worldwide. Over 320,000 victims experienced out-of-hospital cardiac arrests (OHCAs) in the United States in 2011[1]. Older age and males, and comorbidities, such as diabetes mellitus, cardiovascular disorders, and hypertension, have been linked to an elevated OHCA risk[2–6].

Studies have correlated the incident OHCA to the ambient temperature[7–11]. The OHCA incidence is higher in cold season than when it is hot. However, significant elevation of OHCA during heat wave has been reported as well[9, 11].

Recent studies have also linked the risk of OHCA to ambient concentrations of air pollutants[10, 12–24] independent from ambient temperature[7, 11]. Particulate matter less than 10 or 2.5µm in aerodynamic diameter (PM₁₀ or PM_{2.5})[10, 16, 20, 22–25], and ozone (O₃)[12, 13, 21, 22, 24] have been identified as air pollutants associated with OHCA. But, the associations between OHCA and other gaseous air pollutants are inconsistent [12].

So far, no study has evaluated whether individuals with existing disorders living in subtropical and tropical areas are at the OHCA risk. Taiwan is an island located on the western part of the Pacific Ocean with subtropical climate[11, 23]. This study aims to evaluate emergency room visits (ERVs) for OHCA patients in association with ambient environment and health status, using claims data of a national representative population of one million people.

Materials and methods

Data sources

This study used three types of database: health insurance claims of one million people obtained from the National Health Research Institutes (NHRI), daily meteorological records from the Central Weather Bureau, and daily air pollution monitoring records from the Environmental Protection Administration (EPA) for 17 city and county areas island wide from 1996 to 2011. Fig 1 illustrates the population density by district in each area. S1 Table lists information on cardiovascular health status, latitude location and social economics for study areas. In general, population in urban areas (Taipei, New Taipei City, Taichung, and Kaohsiung) had superior wealth and health than those in rural areas (Miaoli, Nantou, Yunlin, Pingtung, Hualien, and Taitung).

The insurance claim database containing medical records of a representative population of one million people randomly sampled from all insured residents for the period of 1996–2012 was provided by the National Health Research Institutes of Taiwan. All identification numbers were scrambled into surrogate number to protect privacy. Disease diagnosed were coded using the ninth revision of the International Classification of Diseases with Clinical Modification (ICD-9 CM). The information on ERVs for OHCA was adopted from previous studies, including consults for paroxysmal ventricular tachycardia (427.1);paroxysmal tachycardia, unspecified (427.2);ventricular fibrillation and flutter (427.4, 427.41, and 427.42);cardiac arrest (427.5);premature beats (427.6);premature beats, unspecified (427.60);supraventricular premature beats (427.61);ventricular premature beats; contractions or systoles (427.69);other specified cardiac dysrhythmias (427.8);sinoatrial node dysfunction (427.81); other specified cardiac dysrhythmias (427.89);cardiac dysrhythmia, unspecified (427.9);sudden death of

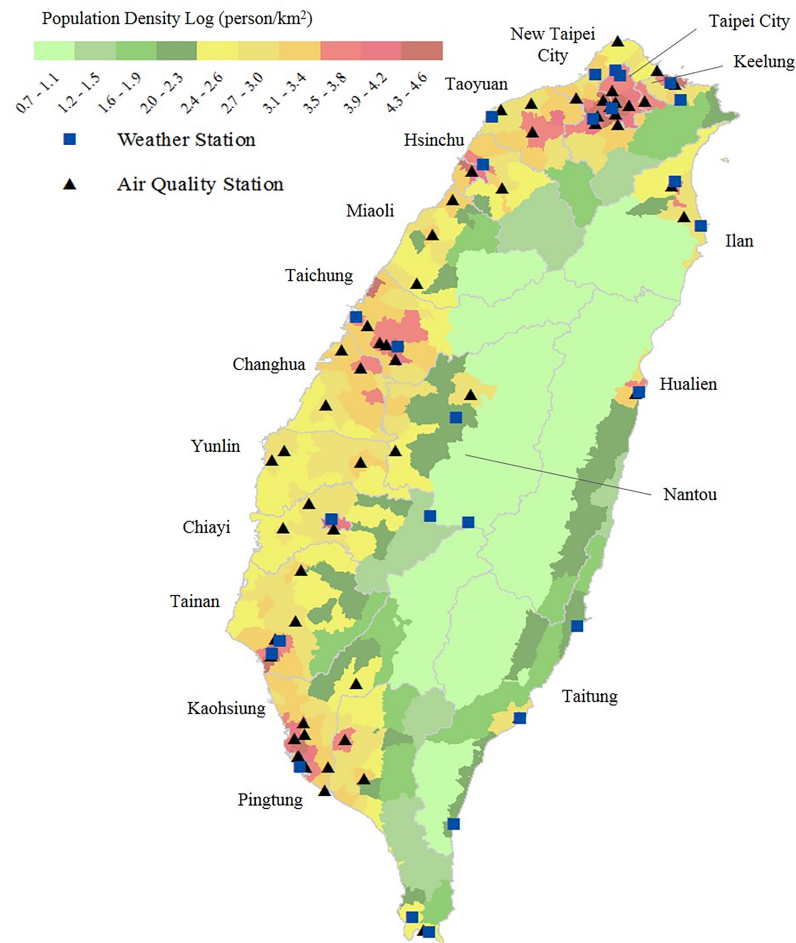


Fig 1. Locations of weather and ambient air quality monitoring stations and population density in Taiwan.

<https://doi.org/10.1371/journal.pone.0204593.g001>

unknown cause (798);sudden infant death syndrome (798.0);instantaneous death (798.1); death that occurred less than 24 h from symptom onset, not otherwise explained (798.2);unattended death (798.9); and respiratory arrest (799.1) [26, 27].

In addition, to evaluate the role of comorbidities attributable to OHCA risk in association with ambient environment, the historical medical records registered for OHCA cases were retrieved and analyzed. We were particularly concerned with pre-existing heart diseases (391, 402, 404, 415, and 416; 393–398; 420–429; and 785–785.3), ischemic heart diseases (410–414), stroke (430–438), hypertension (401–405) and diabetes mellitus (250).

The Taiwan Central Weather Bureau provided the 24-hour weather information, including average temperature, relative humidity and wind speed, monitored at 25 real-time surface meteorological observatories around Taiwan[28]. Fig 1 displays locations of these weather stations. For area without weather stations, such as Miaoli, Changhua, Yunlin, and Nantou, the weather data were obtained from ambient air quality monitoring stations.

Taiwan EPA established an Air Quality Monitoring Network in 1993, consisting of 74 stationary monitoring stations distributed throughout the island[29]. Concentrations of ambient air pollutants, including PM₁₀, PM_{2.5}, sulfur dioxides (SO₂), nitrogen dioxides (NO₂), ozone (O₃) and carbon monoxide (CO) and temperature were measured and recorded hourly at each station. The detailed information on the monitoring instruments, stations, and quality

assurance criteria is available from the webpage <http://taqm.epa.gov.tw/taqm/en/default.aspx>. Because PM_{2.5} was measured and recorded island-wide at the beginning of 2005, thus, the risk association was analyzed for 2005–2011. Fig 1 illustrates the locations of the ambient air quality monitoring stations.

Statistical model

Data analysis was first to count cases of OHCA who had been hospitalized with ERV during 2005–2011. Their characteristics in age and comorbidity were presented. The area-specific associations between the daily ambient environments and ERVs for OHCA were evaluated for the 17 areas using the distributed lag non-linear model (DLNM) with Poisson distribution [30]. The mean ERVs were estimated for 8 groups, including all OHCA cases, OHCA cases aged less than 65 years, OHCA cases aged above 64 years, OHCA cases with pre-existing heart diseases, ischemic heart disease, stroke, hypertension and diabetes mellitus. The group-specific pooled relative risks in association with ambient environments were further estimated by 17 coefficients set for association, i.e. overall cumulative association, lag-specific association, and predictor-specific association, using multivariate meta-analytical second-stage model (restricted maximum likelihood approach) [31].

Sensitivity analyses were performed to evaluate covariates, lag setting, and degrees of freedom (*df*) for single and multi-pollutant models. Akaike's information criterion was used to select model setting [32]. We found a better model fitting for the single-pollutant model to be adapted in this study. Most previous studies used the single-pollutant model to evaluate the risk of OHCA in exposure to air pollution [10, 13, 15, 16, 18, 23–25]. PM has been linked to the risk of OHCA in many previous studies [10, 15, 16, 22–25]. Therefore, this study mainly displays the risk of OHCA related to ambient daily average temperature and PM concentration. We also evaluated risks associated with extreme daily mean temperatures at the 10th and 95th percentile temperatures (18°C and 30°C, respectively) and at the 1st and 99th percentile temperatures (14°C and 32°C, respectively).

This study evaluated degrees of freedom (*dfs*) ranged from 3 to 20 for the covariates of ambient environment and from 1 to 20 per year for the long-term time smoothing. Analyses showed that the superior models as *dfs* of long-term time trends were set at 7 per year. Daily average temperature and concentrations of the air pollutants PM₁₀, PM_{2.5}, SO₂, NO₂, O₃, and CO were set at natural cubic spline (NS) with 7 *dfs* to analyze the non-linear effects on the number of ERVs for OHCA. The six-day cumulative effects (lag 0 to lag 5) and the influences on each single day of the air pollutants were then estimated by comparing the concentrations at the standard against the concentrations at the minimum values for daily average of air pollutants.

Among weather factors, we included relative humidity (RH) and wind speed (WS) in DLNM to control their potential non-linear effects on ERV [33]. Other covariates, including holidays, day of the week (DOW), and daily ERV for pneumonia and influenza (*PeI*, ICD-9 CM: 480–487) were also included in the models.

The relative risks (RRs) and 95% confidence intervals (CIs) of covariates were estimated and reported. We also calculated the daily mean OHCA cases by temperature for the elderly and people < 65 years old and by comorbidity, including diabetes, hypertension, heart disease, ischemic heart disease and stroke. All data manipulation and statistical analyses were performed using SAS version 9.4 (SAS Institute Inc., Cary, NC, USA) and Statistical Environment R (package DLNM ver. 2.2.6 and package mvmeta ver. 0.4.7).

Results

Characteristics of ambient environment, social economics, and OHCA

In the cohort of one million population, there were 9,980 cases of OHCA hospitalized with ERV during 2005–2011 (20,568 cases during 1996–2011). Among 9,980 cases, 6,145 cases were the elderly and 95.9% cases had comorbidities before hospitalization for OHCA. Among them, 7327 cases had multi-comorbidities and 2,653 cases diagnosed with only one single pre-existing comorbidity. Among cases with one disease, hypertension was most prevalent ($n = 1,255$), followed by heart diseases ($n = 515$), diabetes mellitus ($n = 408$), stroke ($n = 253$), and ischemic heart diseases ($n = 222$). [Table 1](#) shows daily ERVs of OHCA by study area and study group from 2005 to 2011. Numbers of ERV of OHCA were higher in urban areas than less urbanized areas, such as the most urbanized metro Taipei (81%) vs. the most rural county Taitung (7%).

Characteristics of the ambient environments are shown in [Fig 2](#) and [S1 Fig](#). Average temperature was higher in Southern Taiwan (Tainan, Kaohsiung, and Pingtung), WS was higher in Taoyuan, and RH was similar island wide. [S2 Fig](#) shows the concentrations of air pollutants. Mean concentrations of PM_{10} , $PM_{2.5}$, SO_2 and O_3 were the highest in Kaohsiung, and NO_2 and CO were the highest in Taipei City.

Pooled relative risks associated with average temperature

The ambient average temperature showed a stronger association with an elevated risk of OHCA than the 6 air pollutants, which were used to estimate the Pollutant Standards Index. The temperature associated with the lowest risk of OHCA varied among study areas and study subgroups. The present study used 29°C as the reference temperature.

[Fig 3](#) shows the pooled cumulative six-day risk of ERVs of random-effect meta-analyses for all population, population aged less than 65 years, and population aged above 64 years in association with the daily average temperature. Significant risks of OHCA were observed as the temperature was lower than 27°C for whole population, lower than 23°C for population aged less than 65 years, ranged from 11°C to 13°C for the elderly population. The pooled cumulative 6-day ERV RRs were 1.73 (95% CI: 1.22, 2.46) for all OHCA and 1.74 (95% CI: 1.06, 2.84) for population younger than 65 years at temperature of 14°C, and was 1.65 (95% CI: 1.02, 2.69) for the elderly at a 13°C environment.

A low temperature (<19°C) significantly associated with an increased number of ERVs for OHCA cases with pre-existing hypertension and ischemic heart diseases, with a cumulative six-day RRs of 1.99 (95% CI: 1.03, 3.87) in a 14°C environment and 2.24 (95% CI: 1.09, 4.60) in a 16°C environment ([Fig 4](#)). However, further data analysis showed that low temperature was not significantly associated with the risk for OHCA cases with comorbid heart diseases, stroke and diabetes mellitus.

Area-specific relative risks associated with ambient environment

[Table 2](#) lists significant ambient environment risk factors in association with ERV of OHCA by study area and group. In general, elevated risks of ERVs for OHCA were more likely associated with daily average temperature, followed by concentrations of PM_{10} , $PM_{2.5}$, and NO_2 . The relationship between air pollutants and ERVs for OHCA was stronger in northern Taiwan, including Keelung, Taipei City, New Taipei City, Ilan, and Taoyuan. The ERV risks for OHCA cases with pre-existing hypertension and diabetes mellitus increased with concentrations of air pollutants.

Pooled area-specific cumulative six-day risks of ERVs for OHCA by study group in association with extreme daily mean temperatures at 18°C and 30°C environments are shown in [Fig](#)

Table 1. Daily average emergency room visit for out-of-hospital cardiac arrest (standard deviation) in Taiwan, 2005–2011.

	Area Type	All	Elderly (>= 65 years)	Non-elderly (<65 years)	Comorbidity				
					Heart diseases	Ischemic heart diseases	Stroke	Hypertension	Diabetes mellitus
Keelung	Suburban	0.10 (0.32)	0.06 (0.25)	0.04 (0.20)	0.03 (0.19)	0.03 (0.18)	0.02 (0.17)	0.05 (0.22)	0.02 (0.16)
Taipei City	Urban	0.81 (0.90)	0.48 (0.70)	0.32 (0.56)	0.32 (0.60)	0.25 (0.51)	0.19 (0.46)	0.42 (0.68)	0.17 (0.45)
New Taipei City	Urban	0.55 (0.75)	0.30 (0.56)	0.25 (0.50)	0.16 (0.42)	0.13 (0.37)	0.13 (0.37)	0.26 (0.53)	0.11 (0.34)
Taoyuan	Urban	0.40 (0.63)	0.25 (0.50)	0.16 (0.40)	0.13 (0.38)	0.11 (0.36)	0.10 (0.33)	0.22 (0.50)	0.12 (0.36)
Hsinchu	Suburban	0.19 (0.43)	0.11 (0.33)	0.08 (0.29)	0.07 (0.28)	0.05 (0.23)	0.04 (0.21)	0.09 (0.31)	0.03 (0.19)
Miaoli	Rural	0.14 (0.37)	0.09 (0.30)	0.05 (0.22)	0.05 (0.24)	0.04 (0.23)	0.04 (0.24)	0.07 (0.30)	0.03 (0.20)
Taichung	Urban	0.64 (0.82)	0.38 (0.63)	0.26 (0.52)	0.25 (0.53)	0.17 (0.44)	0.15 (0.43)	0.34 (0.62)	0.15 (0.42)
Changhua	Suburban	0.22 (0.47)	0.14 (0.38)	0.08 (0.29)	0.08 (0.33)	0.07 (0.29)	0.05 (0.24)	0.12 (0.37)	0.04 (0.24)
Nantou	Rural	0.12 (0.35)	0.08 (0.28)	0.05 (0.22)	0.04 (0.22)	0.04 (0.20)	0.02 (0.13)	0.06 (0.27)	0.02 (0.16)
Yunlin	Rural	0.12 (0.35)	0.08 (0.28)	0.04 (0.21)	0.04 (0.20)	0.03 (0.17)	0.02 (0.16)	0.06 (0.25)	0.03 (0.18)
Chiayi	Suburban	0.16 (0.42)	0.10 (0.32)	0.06 (0.26)	0.06 (0.25)	0.04 (0.21)	0.04 (0.21)	0.10 (0.30)	0.04 (0.21)
Tainan	Urban	0.32 (0.57)	0.17 (0.41)	0.15 (0.40)	0.10 (0.31)	0.07 (0.27)	0.07 (0.28)	0.15 (0.39)	0.07 (0.28)
Kaohsiung	Urban	0.50 (0.72)	0.27 (0.52)	0.23 (0.50)	0.16 (0.41)	0.13 (0.37)	0.10 (0.33)	0.24 (0.51)	0.11 (0.36)
Pingtung	Rural	0.19 (0.44)	0.10 (0.30)	0.10 (0.31)	0.05 (0.24)	0.04 (0.21)	0.04 (0.22)	0.09 (0.32)	0.04 (0.20)
Ilan	Rural	0.10 (0.32)	0.06 (0.25)	0.04 (0.20)	0.04 (0.22)	0.02 (0.15)	0.02 (0.14)	0.05 (0.24)	0.02 (0.15)
Hualien	Rural	0.14 (0.39)	0.08 (0.30)	0.05 (0.24)	0.05 (0.24)	0.03 (0.19)	0.04 (0.21)	0.09 (0.33)	0.04 (0.23)
Taitung	Rural	0.07 (0.27)	0.04 (0.21)	0.03 (0.16)	0.03 (0.16)	0.02 (0.14)	0.02 (0.13)	0.04 (0.20)	0.02 (0.15)

<https://doi.org/10.1371/journal.pone.0204593.t001>

5. Significantly elevated ERVs risks appeared at the mean temperature of 18°C in New Taipei City, Keelung, Ilan, Yunlin, Tainan, and Hualien, especially for OHCA cases comorbid with ischemic heart disease and hypertensions. The risk patterns by cold were consistent in lag days, most peak at lag 0 day.

The risk of ERV for OHCA cases associated with high temperature varied with the lag days. Significant risks associated with high temperature were observed in Pingtung (all OHCA cases, cases aged less than 65 years, and cases with pre-existing heart diseases) as lag effects were accumulated for 0 to 3 days. Risks of lag for 0 to 4 or 0 to 5 days were also significant for the elderly with OHCA and cases with comorbid heart disease in Taipei City, for cases with comorbid stroke in Taichung, for population aged less than 65 years in Yunlin, and for all OHCA cases, cases aged 65 years and above, and cases with comorbid hypertension in Kaohsiung.

Pooled and area-specific cumulative six-day risks of ERV for OHCA cases by study group in association with environments of extreme daily mean temperatures at 14°C and 32°C are

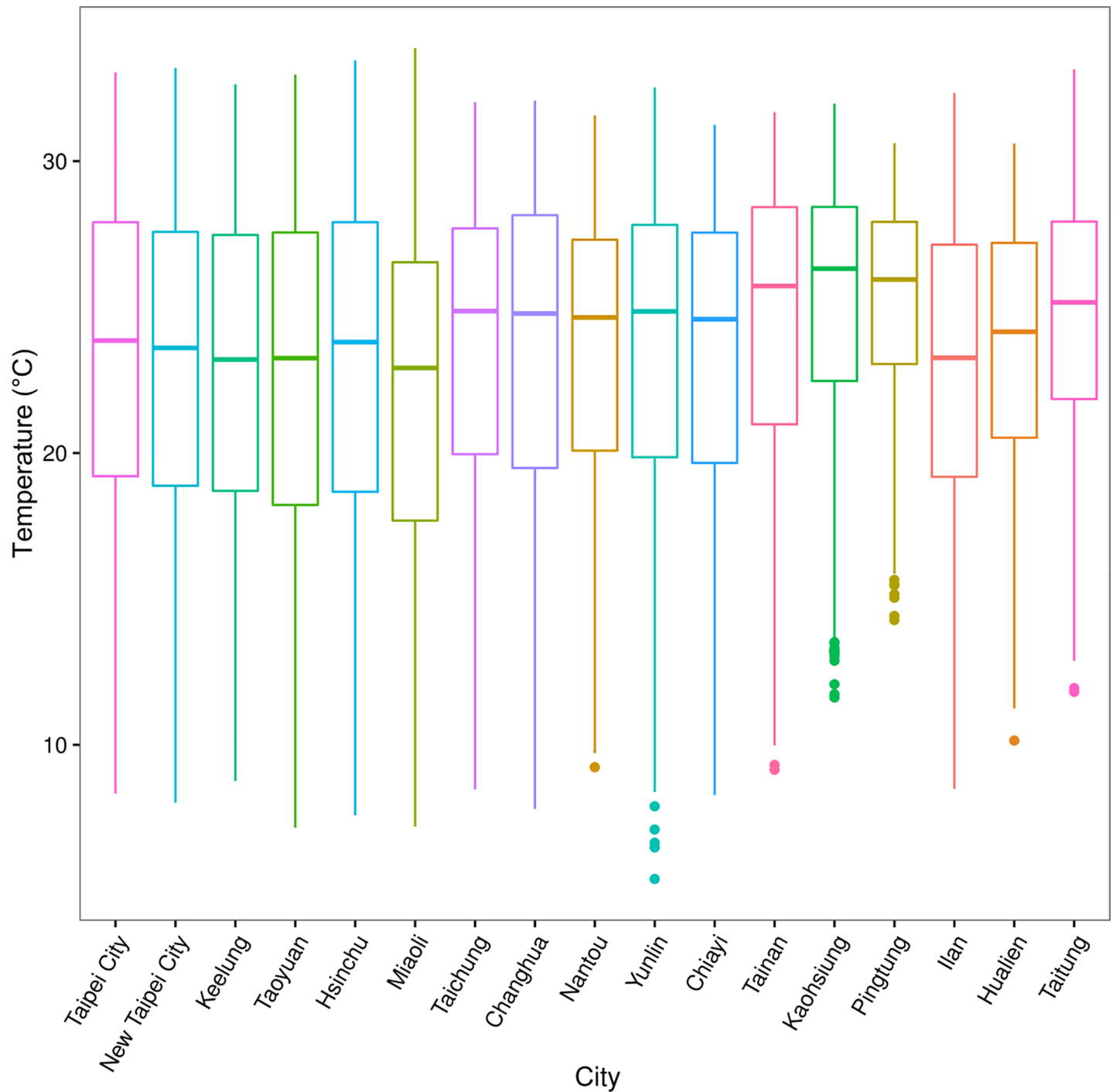


Fig 2. Boxplot of daily average temperature by study area in Taiwan.

<https://doi.org/10.1371/journal.pone.0204593.g002>

shown in S3 Fig. Extremely low temperature significantly elevated the ERV risks at the mean temperature of 14°C in Ilan, Miaoli, Tainan, Kaohsiung, and Hualien, especially for OHCA cases comorbid with heart diseases, ischemic heart diseases, and hypertension. On the contrary, ERV was not associate with extremely high temperature.

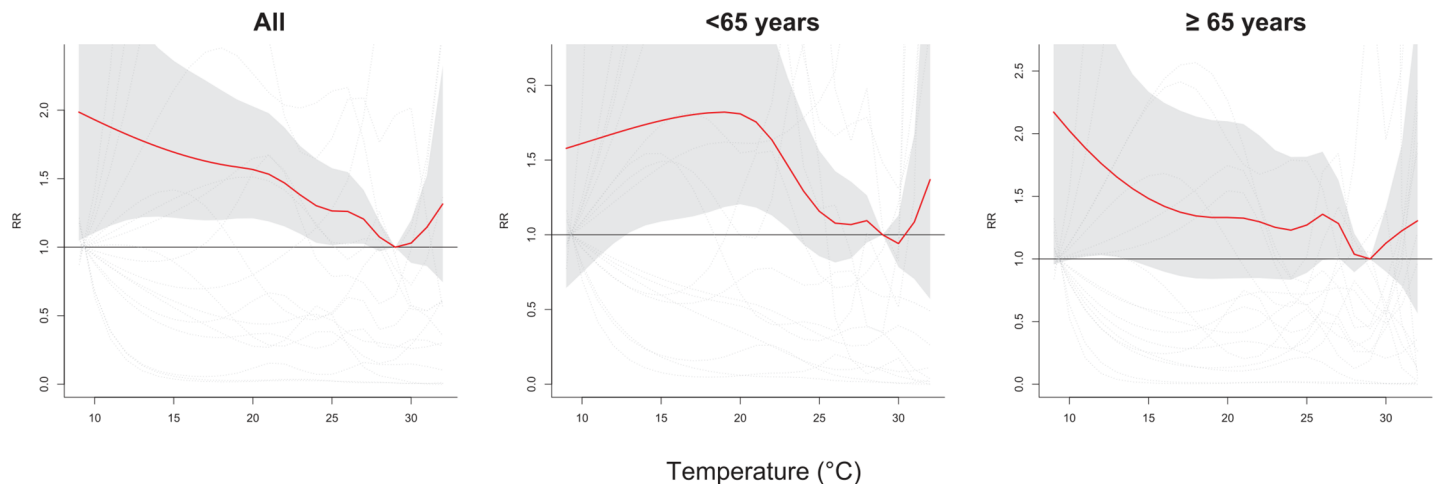


Fig 3. Pooled cumulative 6-day relative risks (RR) of emergency room visit among patients survived with out-of-hospital cardiac arrest in association with daily average temperature for all patients (left), patients younger than 65 years (center), and the elderly (right).

<https://doi.org/10.1371/journal.pone.0204593.g003>

Fig 6 displays pooled and area-specific cumulative six-day risks of ERV for OHCA cases by study subgroup in association with PM_{10} at $125 \mu\text{g}/\text{m}^3$ (reference at $9 \mu\text{g}/\text{m}^3$) and $PM_{2.5}$ at $35 \mu\text{g}/\text{m}^3$ (reference at $3 \mu\text{g}/\text{m}^3$). Increased ERV for OHCA significantly associated with $PM_{2.5}$ concentrations in Taipei City (all OHCA), New Taipei City (all OHCA, cases aged 65 years and above, cases comorbid with stroke), and Ilan (cases aged 65 years and above, cases comorbid with hypertension).

Fig 7 shows the mean daily OHCA cases reported by temperature for associated groups. The mean daily cases of OHCA increased sharply in every group when the ambient temperature dropped to 12°C ; the overall mean daily cases of OHCA increased to 7.3 cases from 4.8 cases.

Discussion

Our data revealed that the greatest risk of ERV for OHCA patients was associated with the extreme low temperature in this subtropical island, especially in the rural area, such as Ilan, Miaoli, and Hualien. Among air pollutants, PM_{10} has the greatest association with the risk of OHCA, followed by ambient NO_2 . These relationships were apparent in northern Taiwan, and particular for Taipei City and New Taipei City. Low temperature was significantly associated with increased ERV risk for OHCA cases comorbid with hypertension and ischemic heart disease. On the contrary, ambient air pollutants were significantly associated with ERV risk for OHCA cases who had pre-existing diabetes mellitus, hypertension, and ischemic heart disease. These findings revealed that relationships between ambient environment and ERV risk of OHCA may be modified by regional environmental characteristics and health status of suspected population.

Low temperature may increase blood viscosity, arterial pressure, and plasma cholesterol concentration, thereby intensifying stress on the cardiovascular system[34]. In addition, the effect of heat stress on human body is related to skin blood flow (cardiac output, splanchnic, and renal circulations), sweat rate, and nitric oxide bioavailable in human vasculature[35]. Therefore, exposure to an extreme temperature may elevate the fatal risk for individuals with impaired function of thermoregulation, such as the elderly, and patients of diabetes mellitus, hypertension, and related heart diseases. In Taiwan, the impact is the greatest when the ambient temperature dropped to 12°C ; the daily mortality from all causes may increase for 34%.

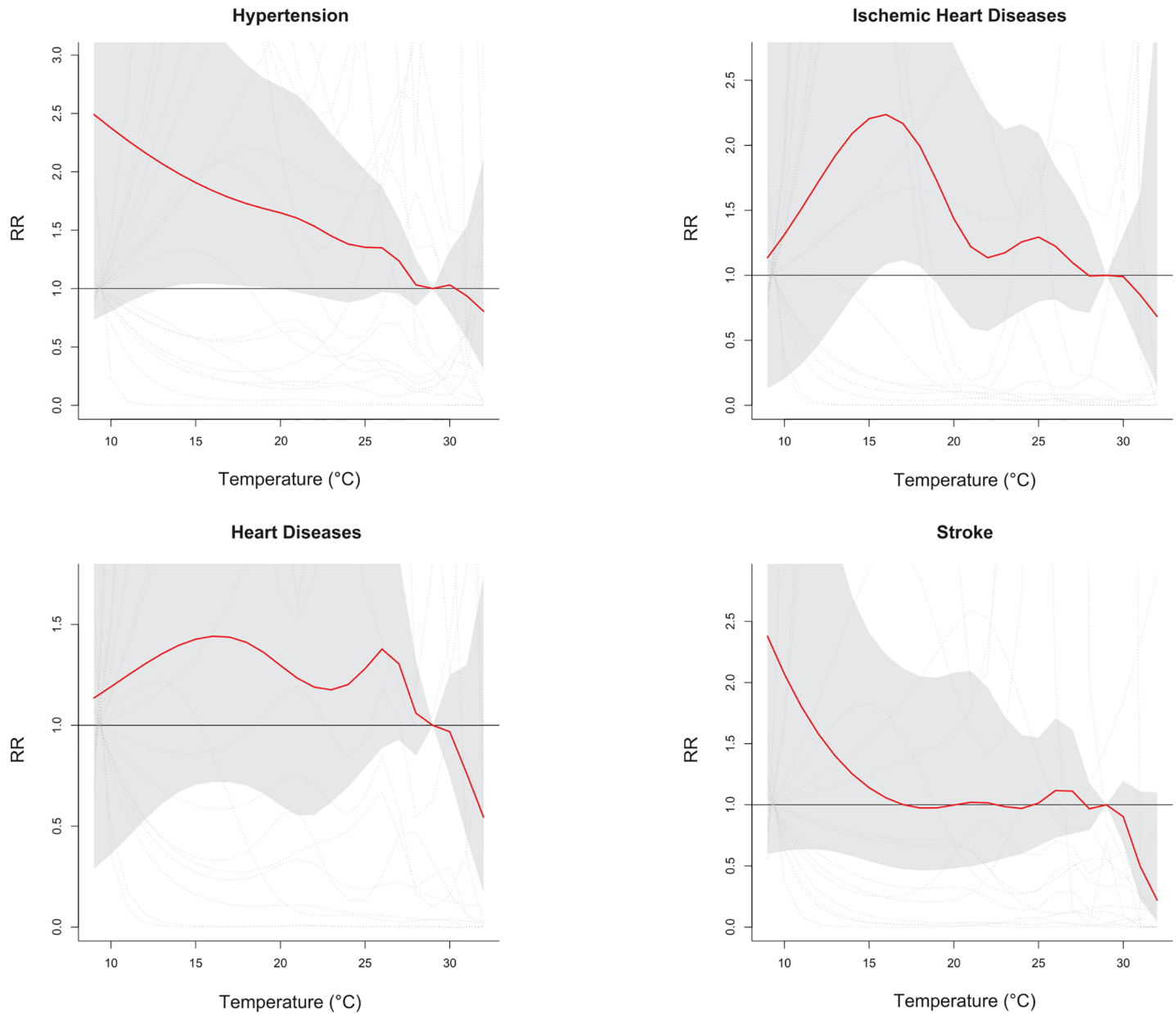


Fig 4. Pooled cumulative 6-day relative risks (RR) of emergency room visit among patients survived with out-of-hospital cardiac arrest in association with daily average temperature for subjects comorbid with hypertension, ischemic heart disease, heart disease, and stroke.

<https://doi.org/10.1371/journal.pone.0204593.g004>

Cardiovascular diseases are prevalent in patients with OHCA[36]. Previous study reported approximately half of sudden cardiac deaths were unexpected and without pre-existing coronary heart diseases[36][36]. This study showed that 4.10% (409/9980) of OHCA subjects had been hospitalized for OHCA with chronic airway obstruction or pneumonia or bronchitis. This finding deserves further study.

Studies investigating the impact of ambient environmental conditions on OHCA associated with demographics and comorbidity had inconsistent findings[7, 11, 15, 23]. A Stockholm study reported that age and sex had no role in the relationship between OHCA and ambient temperature[7]. The elderly and male population seem to have a higher risk of OHCA in

Table 2. Ambient environment factors significantly associated with daily emergency room visit for out-of-hospital cardiac arrest in Taiwan.

Study Area \group	Subjects with comorbidity							
	All	> = 65 years	< 65 years	Heart diseases	Ischemic heart diseases	Stroke	Hypertension	Diabetes mellitus
Keelung	Temp/NO ₂	Temp/NO ₂		Temp	Temp	Temp/PM ₁₀ /O ₃ /NO ₂	PM ₁₀ /O ₃	PM ₁₀ /CO
Taipei City	PM _{2.5}	Temp	PM ₁₀ /PM _{2.5}	Temp			NO ₂	Temp/NO ₂
New Taipei City	Temp/PM _{2.5}	PM ₁₀ /PM _{2.5}	Temp	Temp/PM ₁₀ /PM _{2.5}	PM ₁₀ /PM _{2.5} /CO	Temp/PM ₁₀ /PM _{2.5}	PM ₁₀	PM ₁₀ /SO ₂
Taoyuan	O ₃		O ₃		Temp/O ₃		PM ₁₀ /O ₃	
Miaoli				Temp/CO				Temp/PM ₁₀
Taichung						Temp	PM ₁₀	PM ₁₀
Changhua					Temp/NO ₂			
Nantou						Temp		
Yunlin			Temp/O ₃					
Chiayi					PM ₁₀	Temp		
Tainan	Temp	Temp	Temp/NO ₂	Temp	Temp			Temp/NO ₂
Kaohsiung	Temp	Temp	PM _{2.5}		Temp	PM ₁₀		
Ilan	Temp/NO ₂	Temp/PM _{2.5}	Temp	Temp/PM ₁₀ /O ₃	Temp/PM ₁₀ / NO ₂ /CO	Temp/NO ₂	PM ₁₀ /PM _{2.5} /NO ₂	
Hualien	Temp	Temp	Temp	Temp	Temp			O ₃
Taitung			NO ₂	Temp				PM _{2.5} /SO ₂

Temperature: Daily average temperature

<https://doi.org/10.1371/journal.pone.0204593.t002>

association with ambient temperature in South Korea[11]; comorbidities have a minor role to modify the relationship. However, another Korean study found that individuals with diabetes mellitus and hypertension were vulnerable to high ambient concentration of PM_{2.5} [23][23]. An Italian study proposed that no significant association between ambient PM₁₀ concentrations and OHCA cases with malignant neoplasm, diabetes mellitus, anemia, hypertensive diseases, acute myocardial infarction, ischemic heart disease, stroke, diseases of arteries, arterioles and capillaries, pneumonia, and chronic pulmonary diseases[15]. Even though some data revealed the relationships between OHCA and comorbidities, such as diabetes mellitus and heart disease[3–6].The present study demonstrated that the association between ambient temperature and ERV risk appeared mainly for subgroups with hypertension and ischemic heart disease, while ambient air pollutants was associated with OHCA cases with pre-existing diabetes mellitus, hypertension, and ischemic heart disease.

This study assessed the OHCA risk for subgroups with defined comorbidity. Over 73.4% (7,327/9,980) of our study population were comorbid with multiple diseases. Previous studies have indicated that weather related impact is significantly associated with diabetes mellitus, coronary heart disease, and ischemic stroke[3, 37, 38]. To the best of our knowledge, no report has ever evaluated the effects of ambient environment on cases with multiple comorbidities. Future study should evaluate the risk and mechanism for individuals with multiple comorbidities associated with the climate changes and other ambient conditions.

There are some explanations for linking ambient environment with the variation of OHCA risk among study areas. Morbidity, acclimatization and adaptive capacity to extreme temperatures are likely important factors for susceptible population to deal with the impact of climate changes. Prevalence rates for heart diseases, stroke, hypertension, and diabetes mellitus are higher in rural area of Taiwan (S1 Table). In addition, previous studies indicated that

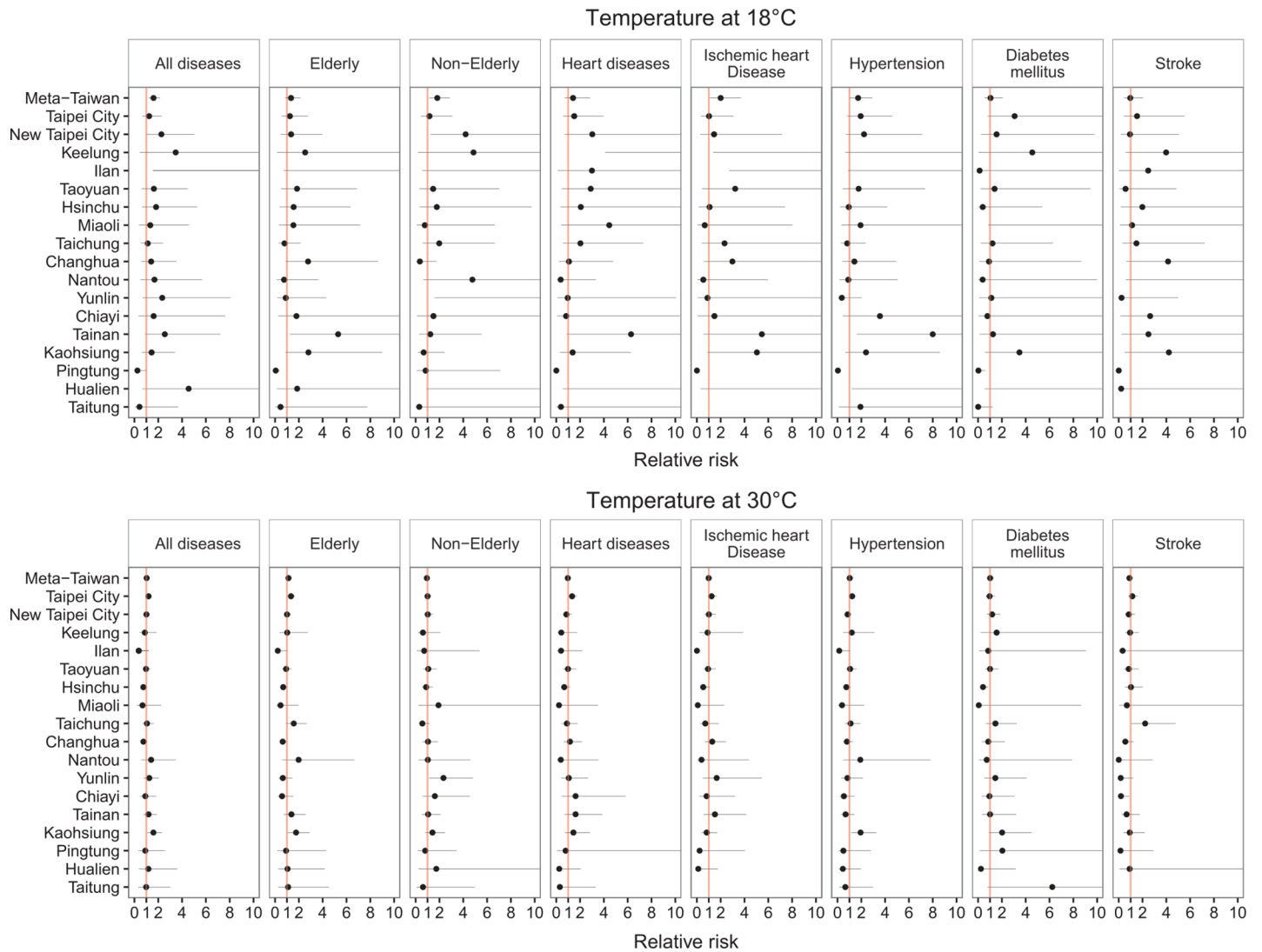


Fig 5. Pooled and area-specific cumulative 6-day relative risks (RR) of emergency room visit among patients survived with out-of-hospital cardiac arrest associated with 18 and 30°C environment.

<https://doi.org/10.1371/journal.pone.0204593.g005>

socioeconomic status significantly associated with the risk of OHCA[39] and the comorbidity a patient has [40]. The present study showed that population living in area with better economic status, such as in Taipei City (S1 Table), suffer less impacts from ambient temperature than in areas with lower economics in Taiwan.

The risk of ERV for OHCA patients is related with not only local ambient air quality (concentrations and composition), climate, time spent outdoor, but also their physiological characteristics. Previous studies indicated that risk for OHCA in association with concentrations of air pollutants varied among study areas, air pollutants under study, lag structure, and cause of OHCA at a high degree of health heterogeneity[12, 22].

However, we observed that the risk associated with ambient environment in areas with lower socioeconomic statuses, such as Miaoli, Nantou, Yunlin, Pingtung, Ilan, Hualien, and Taitung, were weaker than that in areas with high socioeconomic status, such as Taipei metropolitan. Although the medical service is easily accessed and provided throughout Taiwan, the

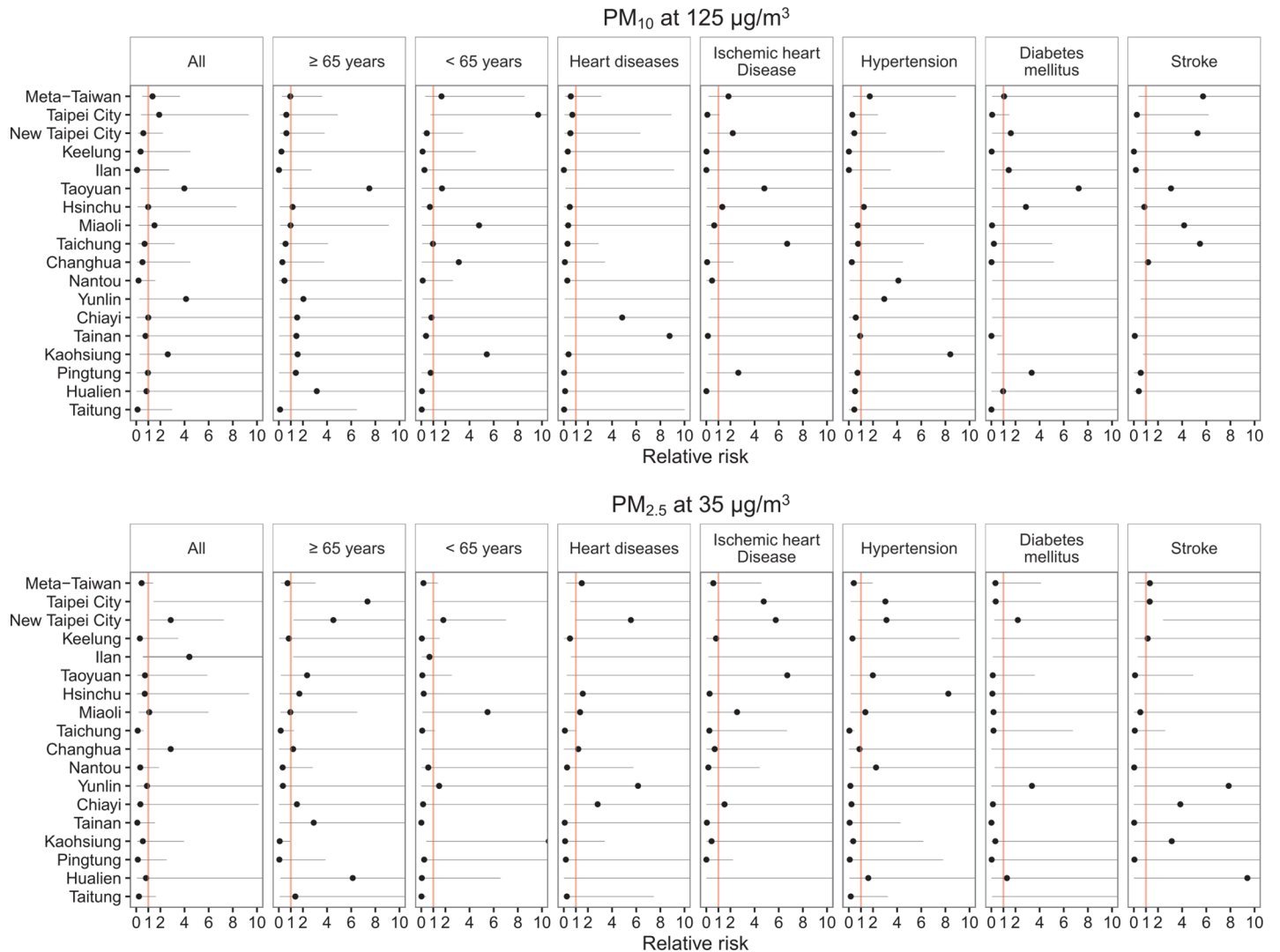


Fig 6. Pooled and area-specific cumulative 6-day relative risks (RR) of emergency room visit among patients survived with out-of-hospital cardiac arrest in association with particulate matter less than 10µm in aerodynamic diameter at 125 µg/m³ (reference at 9 µg/m³) and particulate matter less than 2.5 µm in aerodynamic diameter at 35 µg/m³ (reference at 3µg/m³).

<https://doi.org/10.1371/journal.pone.0204593.g006>

ERVs for OHCA can be potentially influenced by the locations of hospitals with emergency medical services. [S1 Table](#) shows that medical service resources remain less available in rural areas in Taiwan; the risk of ERV of OHCA may not be properly detected in those areas. A previous study in Taiwan indicated the OHCA cases delivered to regional hospitals in non-metropolitan area would have higher mortality[2].

The present study holds several strengths. The 99% coverage rate of the Taiwan National Health Insurance program and widely installed stations for monitoring ambient temperature and air quality ensure a representative study population and reliable environmental data. Confounding effects associating with holidays, week days, long-term trend, and other risk factors associating with pneumonia and influenza had been considered in the models.

This study also has some limitations. First, the information on hospital admission was not individual-based data. Information on patients' willingness to travel to the hospital, smoking and drinking, and indoor/outdoor ratio of air pollutants that may modify risks associating

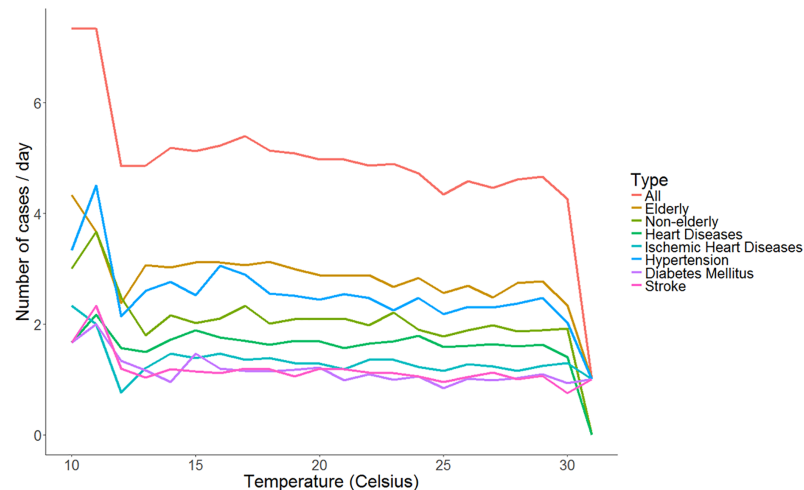


Fig 7. Mean daily OHCA cases reported by temperature for associated groups by age and comorbidity.

<https://doi.org/10.1371/journal.pone.0204593.g007>

with ERVs for OHCA patients were unavailable in the claims data[41–45]. This study has not assessed the risk of OHCA in association with hourly concentrations of air pollutants[13, 16, 20–22, 24, 25] because the ERV data were reported by date instead of hourly. Furthermore, because limited ERV patients were comorbid with pneumonia and influenza (ICD9 CM 480–487; n = 184) and chronic obstructive pulmonary disease and related conditions (ICD9 CM 490–496; n = 374), this study was unable to evaluate the OHCA risk associating with these respiratory disorders. The other limitation was that some patients who had an out-of-hospital cardiac arrest were declared deceased at the scene and did not present to the emergency room. Therefore, findings associated with ERV patients may not reflect all OHCA patients.

There are various risk factors relating to OHCA that may complicate the identification of subjects at a high-risk of ERV. Researchers have suggested that additional efforts to establish a warning system are needed for improving OHCA resuscitation[44]. This study presented various vulnerable subgroups at an elevated OHCA risk in association with extreme temperatures and air pollutants. Our findings could benefit public to comprehend the nebulous conditions and to build public health plans and emerging responses of medical service for OHCA events.

Conclusions

Our data suggested that ERVs are significantly elevated for all OHCA patients and subjects with pre-existing hypertension and ischemic heart disease associated with the exposure to low temperature in multivariate meta-analytical second-stage model. On the contrary, high temperature is associated with elevated OHCA events in limited subgroups with regional variations. Ambient air pollutants also posed a higher association with ERV for OHCA patients in northern Taiwan. The present study also revealed that populations susceptible for OHCA are more likely at the heterogeneity of risks. Our data provide clinicians support to advice their patients to exercise caution when the weather changes, especially for those who have pre-existing hypertension and diabetes mellitus. It is also important to note that OHCA cases in rural area are less likely to present to the emergency room. Public health authority and emerging medical services also need pay attention to the impact of climate change in health services policy and strategy.

Supporting information

S1 Fig. Boxplots of daily relative humidity (%) and wind speed (m/s) by study area in Taiwan.

(TIFF)

S2 Fig. Boxplot of daily concentrations of PM₁₀, PM_{2.5}, SO₂, NO₂, O₃, and CO by study area in Taiwan.

(TIFF)

S3 Fig. Pooled and area-specific cumulative 6-day relative risks (RR) of emergency room visit of out-of-hospital cardiac arrest in association with 14 and 32°C environment.

(TIFF)

S1 Table. Information on land, social economics, and medical service for study areas.

(DOCX)

Acknowledgments

We would like to thank the Taiwan Ministry of Health and Welfare, Taiwan EPA, and Taiwan Central Weather Bureau for providing research data. The interpretation and conclusions contained herein do not necessarily represent the views of these agencies.

Author Contributions

Conceptualization: Yu-Chun Wang, Yi-Chun Chen, Chun-Yu Ko, Yue-Liang Leon Guo.

Data curation: Yu-Chun Wang, Chun-Yu Ko.

Writing – original draft: Yu-Chun Wang.

Writing – review & editing: Yu-Chun Wang, Fung-Chang Sung.

References

1. Mozaffarian D, Benjamin EJ, Go AS, Arnett DK, Blaha MJ, Cushman M, et al. Heart Disease and Stroke Statistics—2015 Update. *Circulation*. 2014; 131(4):e29–e322.
2. Wang CY, Wang JY, Teng NC, Chao TT, Tsai SL, Chen CL, et al. The secular trends in the incidence rate and outcomes of out-of-hospital cardiac arrest in Taiwan—a nationwide population-based study. *PLoS One*. 2015; 10(4):e0122675. <https://doi.org/10.1371/journal.pone.0122675> PMID: 25875921; PubMed Central PMCID: PMC4398054.
3. Ro YS, Shin SD, Song KJ, Kim JY, Lee EJ, Lee YJ, et al. Risk of Diabetes Mellitus on Incidence of Out-of-Hospital Cardiac Arrests: A Case-Control Study. *PLoS One*. 2016; 11(4):e0154245. <https://doi.org/10.1371/journal.pone.0154245> PMID: 27105059; PubMed Central PMCID: PMC4841534.
4. van de Glind EM, van Munster BC, van de Wetering FT, van Delden JJ, Scholten RJ, Hooft L. Pre-arrest predictors of survival after resuscitation from out-of-hospital cardiac arrest in the elderly: a systematic review. *BMC Geriatr*. 2013; 13:68. <https://doi.org/10.1186/1471-2318-13-68> PMID: 23819760; PubMed Central PMCID: PMC3711933.
5. Winther-Jensen M, Kjaergaard J, Wanscher M, Nielsen N, Wetterslev J, Cronberg T, et al. No difference in mortality between men and women after out-of-hospital cardiac arrest. *Resuscitation*. 2015; 96:78–84. <https://doi.org/10.1016/j.resuscitation.2015.06.030> PMID: 26215480.
6. Larsson M, Thoren AB, Herlitz J. A history of diabetes is associated with an adverse outcome among patients admitted to hospital alive after an out-of-hospital cardiac arrest. *Resuscitation*. 2005; 66(3):303–7. <https://doi.org/10.1016/j.resuscitation.2005.03.012> PMID: 16039035.
7. Dahlquist M, Raza A, Bero-Bedada G, Hollenberg J, Lind T, Orsini N, et al. Short-term departures from an optimum ambient temperature are associated with increased risk of out-of-hospital cardiac arrest. *Int J Hyg Environ Health*. 2016; 219(4–5):389–97. <https://doi.org/10.1016/j.ijheh.2016.03.005> PMID: 27053353.

8. Nishiyama C, Iwami T, Nichol G, Kitamura T, Hiraide A, Nishiuchi T, et al. Association of out-of-hospital cardiac arrest with prior activity and ambient temperature. *Resuscitation*. 2011; 82(8):1008–12. <https://doi.org/10.1016/j.resuscitation.2011.03.035> PubMed PMID: WOS:000294140100014. PMID: 21543146
9. Tanigawa-Sugihara K, Iwami T, Nishiyama C, Kitamura T, Goto M, Ando M, et al. Association between atmospheric conditions and occurrence of out-of-hospital cardiac arrest- 10-year population-based survey in Osaka. *Circ J*. 2013; 77(8):2073–8. PMID: 23698029.
10. Dai JP, Chen RJ, Meng X, Yang CY, Zhao ZH, Kan HD. Ambient air pollution, temperature and out-of-hospital coronary deaths in Shanghai, China. *Environ Pollut*. 2015; 203:116–21. <https://doi.org/10.1016/j.envpol.2015.03.050> PubMed PMID: WOS:000356643000013. PMID: 25875162
11. Kang SH, Oh IY, Heo J, Lee H, Kim J, Lim WH, et al. Heat, heat waves, and out-of-hospital cardiac arrest. *Int J Cardiol*. 2016; 221:232–7. <https://doi.org/10.1016/j.ijcard.2016.07.071> PMID: 27404681.
12. Teng TH, Williams TA, Bremner A, Tohira H, Franklin P, Tonkin A, et al. A systematic review of air pollution and incidence of out-of-hospital cardiac arrest. *J Epidemiol Community Health*. 2014; 68(1):37–43. <https://doi.org/10.1136/jech-2013-203116> PMID: 24101168.
13. Raza A, Bellander T, Bero-Bedada G, Dahlquist M, Hollenberg J, Jonsson M, et al. Short-term effects of air pollution on out-of-hospital cardiac arrest in Stockholm. *Eur Heart J*. 2014; 35(13):861–8. <https://doi.org/10.1093/eurheartj/ehu489> PMID: 24302272.
14. Dai X, He X, Zhou Z, Chen J, Wei S, Chen R, et al. Short-term effects of air pollution on out-of-hospital cardiac arrest in Shenzhen, China. *Int J Cardiol*. 2015; 192:56–60. <https://doi.org/10.1016/j.ijcard.2015.05.016> PMID: 25985015.
15. Serinelli M, Vigotti MA, Stafoggia M, Berti G, Bisanti L, Mallone S, et al. Particulate matter and out-of-hospital coronary deaths in eight Italian cities. *Occup Environ Med*. 2010; 67(5):301–6. <https://doi.org/10.1136/oem.2009.046359> PMID: 19819851.
16. Rosenthal FS, Carney JP, Olinger ML. Out-of-hospital cardiac arrest and airborne fine particulate matter: a case-crossover analysis of emergency medical services data in Indianapolis, Indiana. *Environ Health Perspect*. 2008; 116(5):631–6. <https://doi.org/10.1289/ehp.10757> PMID: 18470283; PubMed Central PMCID: PMCPMC2367645.
17. Dennekamp M, Akram M, Abramson MJ, Tonkin A, Sim MR, Fridman M, et al. Outdoor air pollution as a trigger for out-of-hospital cardiac arrests. *Epidemiology*. 2010; 21(4):494–500. <https://doi.org/10.1097/EDE.0b013e3181e093db> PMID: 20489649.
18. Yorifuji T, Suzuki E, Kashima S. Outdoor air pollution and out-of-hospital cardiac arrest in Okayama, Japan. *J Occup Environ Med*. 2014; 56(10):1019–23. <https://doi.org/10.1097/JOM.0000000000000274> PMID: 25285824.
19. Fukuda T, Ohashi N, Doi K, Matsubara T, Kitsuta Y, Nakajima S, et al. Impact of seasonal temperature environment on the neurologic prognosis of out-of-hospital cardiac arrest: A nationwide, population-based cohort study. *J Crit Care*. 2014; 29(5):840–7. <https://doi.org/10.1016/j.jcrc.2014.03.034> PubMed PMID: WOS:000340928000028. PMID: 24815037
20. Straney L, Finn J, Dennekamp M, Bremner A, Tonkin A, Jacobs I. Evaluating the impact of air pollution on the incidence of out-of-hospital cardiac arrest in the Perth Metropolitan Region: 2000–2010. *J Epidemiol Community Health*. 2014; 68(1):6–12. <https://doi.org/10.1136/jech-2013-202955> PMID: 24046350.
21. Ensor KB, Raun LH, Persse D. A case-crossover analysis of out-of-hospital cardiac arrest and air pollution. *Circulation*. 2013; 127(11):1192–9. <https://doi.org/10.1161/CIRCULATIONAHA.113.000027> PMID: 23406673.
22. Rosenthal FS, Kuisma M, Lanki T, Hussein T, Boyd J, Halonen JI, et al. Association of ozone and particulate air pollution with out-of-hospital cardiac arrest in Helsinki, Finland: evidence for two different etiologies. *J Expo Sci Environ Epidemiol*. 2013; 23(3):281–8. <https://doi.org/10.1038/jes.2012.121> PMID: 23361443.
23. Kang SH, Heo J, Oh IY, Kim J, Lim WH, Cho Y, et al. Ambient air pollution and out-of-hospital cardiac arrest. *Int J Cardiol*. 2016; 203:1086–92. <https://doi.org/10.1016/j.ijcard.2015.11.100> PMID: 26646382.
24. Pradeau C, Rondeau V, Leveque E, Guernion PY, Tentillier E, Thicoipe M, et al. Air pollution and activation of mobile medical team for out-of-hospital cardiac arrest. *Am J Emerg Med*. 2015; 33(3):367–72. <https://doi.org/10.1016/j.ajem.2014.12.007> PMID: 25577313.
25. Wichmann J, Folke F, Torp-Pedersen C, Lippert F, Ketznel M, Ellermann T, et al. Out-of-hospital cardiac arrests and outdoor air pollution exposure in Copenhagen, Denmark. *PLoS One*. 2013; 8(1):e53684. <https://doi.org/10.1371/journal.pone.0053684> PMID: 23341975; PubMed Central PMCID: PMCPMC3544842.
26. Coppler PJ, Rittenberger JC, Wallace DJ, Callaway CW, Elmer J, Pittsburgh Post Cardiac Arrest S. Billing diagnoses do not accurately identify out-of-hospital cardiac arrest patients: An analysis of a regional

- healthcare system. *Resuscitation*. 2016; 98:9–14. <https://doi.org/10.1016/j.resuscitation.2015.09.399> PMID: 26476197; PubMed Central PMCID: PMC4715911.
27. Debruin M, Vanhemel N, Leuffkens H, Hoes A. Hospital discharge diagnoses of ventricular arrhythmias and cardiac arrest were useful for epidemiologic research. *Journal of Clinical Epidemiology*. 2005; 58(12):1325–9. <https://doi.org/10.1016/j.jclinepi.2005.04.009> PMID: 16291479
 28. Bureau TCW. 2013. Available from: <http://www.cwb.gov.tw/eng/index.htm>.
 29. Administration TEP. Taiwan Air Quality Monitoring Network. Available from: <http://taqm.epa.gov.tw/taqm/en/PsiAreaHourly.aspx>.
 30. Gasparrini A, Armstrong B, Kenward MG. Distributed lag non-linear models. *Statistics in Medicine*. 2010; 29(21):2224–34. <https://doi.org/10.1002/sim.3940> PMID: 20812303
 31. Gasparrini A, Armstrong B. Reducing and meta-analysing estimates from distributed lag non-linear models. *Bmc Med Res Methodol*. 2013; 13. PubMed PMID: WOS:000316227800001.
 32. Akaike H. *Information Theory and an Extension of the Maximum Likelihood Principle*. Springer Series in Statistics: Springer New York; 1992. p. 610–24.
 33. Wang YC, Lin YK, Chuang CY, Li MH, Chou CH, Liao CH, et al. Associating emergency room visits with first and prolonged extreme temperature event in Taiwan: A population-based cohort study. *Sci Total Environ*. 2012; 416:97–104. Epub 2012/01/03. doi: S0048-9697(11)01391-X [pii] <https://doi.org/10.1016/j.scitotenv.2011.11.073> PMID: 22209370.
 34. Keatinge WR, Coleshaw SR, Cotter F, Mattock M, Murphy M, Chelliah R. Increases in platelet and red cell counts, blood viscosity, and arterial pressure during mild surface cooling: factors in mortality from coronary and cerebral thrombosis in winter. *Br Med J (Clin Res Ed)*. 1984; 289(6456):1405–8. PMID: 6437575; PubMed Central PMCID: PMC4143679.
 35. Kenney WL, Craighead DH, Alexander LM. HEAT WAVES, AGING, AND HUMAN CARDIOVASCULAR HEALTH. *Medicine and science in sports and exercise*. 2014; 46(10):1891–9. <https://doi.org/10.1249/MSS.0000000000000325> PubMed PMID: PMC4155032. PMID: 24598696
 36. Goraya TY, Jacobsen SJ, Kottke TE, Frye RL, Weston SA, Roger VL. Coronary heart disease death and sudden cardiac death: a 20-year population-based study. *Am J Epidemiol*. 2003; 157(9):763–70. PMID: 12727669.
 37. Andersson C, van Gaal L, Caterson ID, Weeke P, James WPT, Couthino W, et al. Relationship between HbA1c levels and risk of cardiovascular adverse outcomes and all-cause mortality in overweight and obese cardiovascular high-risk women and men with type 2 diabetes. *Diabetologia*. 2012; 55(9):2348–55. <https://doi.org/10.1007/s00125-012-2584-3> PMID: 22638548
 38. Donahoe SM, Stewart GC, McCabe CH, et al. Diabetes and mortality following acute coronary syndromes. *JAMA*. 2007; 298(7):765–75. <https://doi.org/10.1001/jama.298.7.765> PMID: 17699010
 39. Wells DM, White LL, Fahrenbruch CE, Rea TD. Socioeconomic status and survival from ventricular fibrillation out-of-hospital cardiac arrest. *Ann Epidemiol*. 2016; 26(6):418–23 e1. <https://doi.org/10.1016/j.annepidem.2016.04.001> PMID: 27174737.
 40. Smith BT, Lynch JW, Fox CS, Harper S, Abrahamowicz M, Almeida ND, et al. Life-course socioeconomic position and type 2 diabetes mellitus: The Framingham Offspring Study. *Am J Epidemiol*. 2011; 173(4):438–47. <https://doi.org/10.1093/aje/kwq379> PMID: 21242301; PubMed Central PMCID: PMC4155032.
 41. Zipes DP, Wellens HJ. Sudden cardiac death. *Circulation*. 1998; 98(21):2334–51. PMID: 9826323.
 42. Murakami Y, Iwami T, Kitamura T, Nishiyama C, Nishiuchi T, Hayashi Y, et al. Outcomes of out-of-hospital cardiac arrest by public location in the public-access defibrillation era. *J Am Heart Assoc*. 2014; 3(2):e000533. <https://doi.org/10.1161/JAHA.113.000533> PMID: 24755149; PubMed Central PMCID: PMC4187486.
 43. Empana JP, Sauval P, Ducimetiere P, Tafflet M, Carli P, Jouven X. Increase in out-of-hospital cardiac arrest attended by the medical mobile intensive care units, but not myocardial infarction, during the 2003 heat wave in Paris, France. *Crit Care Med*. 2009; 37(12):3079–84. <https://doi.org/10.1097/CCM.0b013e3181b0868f> PMID: 19633540.
 44. Sacks JD, Stanek LW, Luben TJ, Johns DO, Buckley BJ, Brown JS, et al. Particulate Matter–Induced Health Effects: Who Is Susceptible? *Environmental Health Perspectives*. 2010; 119(4):446–54. <https://doi.org/10.1289/ehp.1002255> PMID: 20961824
 45. Bell ML, Zanobetti A, Dominici F. Evidence on Vulnerability and Susceptibility to Health Risks Associated With Short-Term Exposure to Particulate Matter: A Systematic Review and Meta-Analysis. *American Journal of Epidemiology*. 2013; 178(6):865–76. <https://doi.org/10.1093/aje/kwt090> PMID: 23887042